



CEN-TECH 3-in-1 Portable Jump Pack Owner's Manual

[Home](#) » [CEN-TECH](#) » CEN-TECH 3-in-1 Portable Jump Pack Owner's Manual 

Contents

- [1 CEN-TECH 3-in-1 Portable Jump Pack](#)
- [2 CHARGE COMPLETELY IMMEDIATELY AFTER PURCHASE](#)
- [3 Safety Instructions](#)
- [4 Safety Warnings and Precautions](#)
- [5 Specifications](#)
- [6 Functions](#)
- [7 Charging the Jump Pack](#)
- [8 Operating Instructions](#)
- [9 Maintenance and Servicing](#)
- [10 Parts List and Diagram](#)
- [11 Assembly Diagram](#)
- [12 Limited 90 Day Warranty](#)
- [13 CONTACTS](#)
- [14 DOWNLOAD RESOURCES](#)
- [15 FAQ'S](#)
- [16 Documents / Resources](#)
- [17 Related Posts](#)

CEN-TECH®

CEN-TECH 3-in-1 Portable Jump Pack



CEN-TECH 3-in-1 Portable Jump Pack

CHARGE COMPLETELY IMMEDIATELY AFTER PURCHASE

Fully recharge after each jump-start.
Fully recharge monthly to ensure long battery life.

Safety Instructions

Save This Manual Keep this manual for the safety warnings and precautions, assembly, operating, inspection, maintenance, and cleaning procedures. Write the product's serial number in the back of the manual near the assembly diagram (or month and year of purchase if the product has no number). Keep this manual and the receipt in a safe and dry place for future reference.

Visit our website at: <http://www.harborfreight.com>

Email our technical support at: productsupport@harborfreight.com

When unpacking, make sure that the product is intact and undamaged. If any parts are missing or broken, please call 1-888-866-5797 as soon as possible.

© Copyright 2021 by Harbor Freight Tools ®.

All rights reserved.

No portion of this manual or any artwork contained herein may be reproduced in any shape or form without the express written consent of Harbor Freight Tools. Diagrams within this manual may not be drawn proportionally. Due to improvements, the actual product may differ slightly from the product described herein. Tools required for assembly and service may not be included.






WARNING

Read this material before using this product.
Failure to do so can result in serious injury.

SAVE THIS MANUAL

WARNING SYMBOLS AND DEFINITIONS

| | |
|---------------------------|--|
| | This is the safety alert symbol. It is used to alert you to potential personal injury hazards. Obey all safety messages that follow this symbol to avoid possible injury or death. |
| DANGER | Indicates a hazardous situation that, if not avoided, will result in death or serious injury. |
| WARNING | Indicates a hazardous situation that, if not avoided, could result in death or serious injury. |
| CAUTION | Indicates a hazardous situation that, if not avoided, could result in minor or moderate injury. |
| NOTICE CAUTION | Addresses practices not related to personal injury. |

| | |
|---|--|
| V | Volts |
| ~ | Alternating Current |
| A | Amperes |
| CCA | Cold Cranking Amps |
| RC | Reserve Capacity |
| Ah | Ampere-hours |
|  | WARNING marking concerning Risk of Eye Injury. Wear ANSI-approved splash-resistant safety goggles. |
|  | Read the manual before setup and/or use. |
|  | WARNING marking concerning Risk of Fire. Follow the connection procedure. |

Safety Warnings and Precautions

General Safety Warnings



WARNING

Read all safety warnings and instructions.

Failure to follow the warnings and instructions may result in electric shock, fire, and/or serious injury.

Save all warnings and instructions for future reference.

WARNING! – RISK OF EXPLOSIVE GASES.

Working in the vicinity of a lead-acid battery is dangerous. Batteries generate explosive gases during normal battery operation. For this reason, it is of utmost importance that you follow the instructions each time you use the Jump Pack.

To reduce the risk of battery explosion, follow these instructions and those published by the battery manufacturer and manufacturer of any equipment you intend to use in the vicinity of the battery. Review cautionary marking on these products and on the engine.

Work Area Safety

1. Keep work area clean and well-lit.

Cluttered or dark areas invite accidents.

2. Do not operate Jump Pack in explosive atmospheres, such as in the presence of flammable liquids, gases, or dust. The Jump Pack can create sparks that may ignite dust or fumes.
3. Keep children and bystanders away while operating the Jump Pack.
Distractions can cause you to lose control.
4. Store idle equipment. Always lock up tools and keep them out of reach of children.

Electrical Safety

1. Do not drop a metal tool onto the battery. It might spark or short-circuit a battery or another electrical part that may cause an explosion.
2. Do not operate if Jump Pack has received a sharp blow, been dropped, or otherwise damaged in any way; take it to a qualified technician.
3. Do not leave Jump Pack unattended while switched on. It could result in fire and property damage.
4. Do not expose to rain or wet conditions. Water entering the Jump Pack will increase the risk of electric shock.
5. Do not use an extension cord with this item.
6. Use of an attachment not recommended or sold by the manufacturer may result in a risk of fire, electric shock, or injury to persons.
7. To reduce the risk of damage to the electric plug and cord, pull by plug rather than cord when disconnecting the Adapter.
8. Do not operate with a damaged cord or plug. Replace the cord or plug immediately.

Personal Safety



1. Wear ANSI-approved splash-resistant safety goggles and heavy-duty rubber work gloves whenever connecting, disconnecting, or working near the battery. Battery acid can cause permanent blindness. Avoid touching eyes while working near the battery.
2. Do not use Jump Pack while you are tired or under the influence of drugs, alcohol or medication. A moment of attention while operating Jump Pack may result in serious personal injury.
3. NEVER smoke or allow a spark or flame in the vicinity of the battery or engine.
4. If battery acid contacts skin or clothing, wash immediately with soap and water. If acid enters the eye, immediately flood the eye with running cold water for at least 10 minutes and get medical attention immediately.
5. Remove personal metal items such as rings, bracelets, necklaces, and watches when working with a lead-acid battery. A lead-acid battery can produce a short-circuit current high enough to weld a ring or the like to metal, causing a severe burn.
6. People with pacemakers should consult their physician(s) before use. Electromagnetic fields in close proximity to heart pacemakers could cause pacemaker interference or pacemaker failure.

Service

Have your Jump Pack serviced by a qualified repair person using only identical replacement parts?
This will ensure that the safety of the Jump Pack is maintained.

Jump Pack Safety Warnings

1. Lead-acid batteries generate hydrogen gas when charging. Hydrogen gas is explosive. Only use the Jump-Start system in a well-ventilated area.
2. Jump-Starting A Vehicle
 - a. Use the Jump Pack for jump-starting a LEAD-ACID battery only.
 - b. For emergency use only. Do not use the Jump Pack as a replacement for a vehicle battery.
 - c. Be sure area around the battery is well ventilated while the battery is being jump-started.
 - d. NEVER jump-start a frozen battery.
 - e. Do not attempt to jump-start a vehicle with a non-rechargeable or defective battery.
 - f. Study all battery manufacturer's specific precautions for jump-starting.
 - g. DO NOT TOUCH POSITIVE AND NEGATIVE BATTERY CLAMPS TOGETHER.
 - h. Unplug the Jump Pack from its Adapter before connecting its cables to a battery.
 - i. Connect and disconnect battery cable clamps only after setting any JumpStarter switches to OFF position.
 - j. Connect cables to proper polarities. Connect black cable to negative body ground and red cable to the positive battery terminal.
 - k. Locate Jump Pack as far away from battery as battery cables permit.
3. Maintain labels and nameplates on the Jump Pack. These carry important safety information. If unreadable or missing, contact Harbor Freight Tools for a replacement.
4. The warnings, precautions, and instructions discussed in this instruction manual cannot cover all possible conditions and situations that may occur. It must be understood by the operator that common sense and caution are factors that cannot be built into this product but must be supplied by the operator.



SAVE THESE INSTRUCTIONS.

Specifications

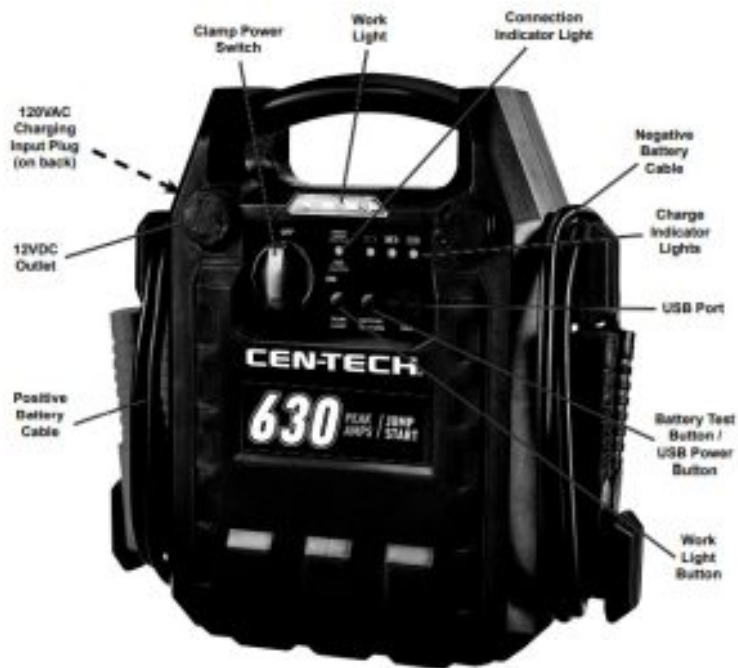
| | |
|---|-----------------------------|
| Cold Cranking Amps | 330 |
| Battery | 12V, 17Ah, Sealed Lead-Acid |
| Battery Cables | 41" L |
| Cable Gauge | 6 AWG |
| Functions: 12 Volt Jump-Starter, 12VDC Power Supply, and 3 LED Work Light | |

Setup – Before Use:



Read the ENTIRE IMPORTANT SAFETY InSTRUCTIONS section at the beginning of this manual including all text under subheadings therein before set up or use of this product.
note: For additional information regarding the parts listed in the following pages, refer to Parts List and Diagram on page 11.

Functions



Charging the Jump Pack

WARNING! TO PREVENT SERIOUS INJURY: Always charge on a non-flammable surface.

Press and hold the Battery Test Button on the front of the unit to check the battery power level.

- Greenlight is ready for use.
 - Yellow light needs to be charged.
 - Red light should be charged immediately. Turn the Clamp Power Switch on front of the unit to the OFF position.
- Note: Before initial use, completely charge the Jump Pack.

1. Plug the 120VAC Adapter into a 2 or 3-prong outlet.
2. Slide the Adapter socket onto the 120VAC Charging Input Plug on the back of the Jump Pack.

| |
|--------------------------------|
| Approximate AC Charge Time |
| Initial Charge: Up to 48 hours |
| Recharge: Up to 30 hours |

3. The Charging Indicator lights will illuminate in a cycle from red, to yellow, to green while the unit is charging. The green Charging Indicator light will remain on after charging is complete. The battery power level must be checked periodically when charging, and the Jump Pack must be unplugged when it is fully charged.

NOTE: FAILURE TO RECHARGE THE JUMP PACK WILL VOID THE WARRANTY.

4. Recharge:
 - a. When yellow light comes on while pressing the Battery Test Button.
 - b. After each Jump-Start.

c. Once a month.

DO NOT EXCEED MAXIMUM CHARGING TIME.

DC Appliance Compatibility

The Jump Pack can run/charge 12VDC auto, RV, marine, or other portable appliances that draw 15 amps or less. The lower the number of watts the appliance draws, the longer the Jump Pack can run/charge it before needing to be recharged. Calculate the total wattage needed to run the appliance before operation. You do not need to calculate startup or surge wattages.

To calculate the size of the load you plan to use with the Jump Pack, use the following formula:

Amps x Volts = Watts

For example, if you use an appliance whose running amps is 7 amps, you will need 84 watts of power (7 amps x 12V = 84 Watts) to run the items. This figure is within the capacity of the unit (15 amps x 12V = 180 Watts).

Note: Use this chart as a guideline only. The actual power usage may vary based on the model or brand of the appliance. Check the actual wattage of your appliances and calculate the amount of power needed to run/charge them.

| Appliance | Estimated Power (watts) | Estimated Use (hours) |
|---------------------------------------|-------------------------|-----------------------|
| Fluorescent Light, Cell Phone Charger | 4 | 50 |
| Radio, Fan, Depth Finder | 9 | 26 |
| Video Recorder/ Player, Spotlight | 15 | 14 |
| Small Power Tool, Bilge Pump | 24 | 8 |
| Electric Cooler | 48 | 3 |
| Air Compressor | 80 | 2 |

Operating Instructions

Using the Work Light

1. To turn the Work Light on, press the Work Light button.
2. To turn flashing lights on, press the Work Light Button again.
3. To turn the Work Light off, press the Work Light button again.

Jump-Starting a Vehicle

Note: Read the vehicle owner's manual pertaining to jump-starting prior to using the Jump Pack.

1. Press the Battery Test button to verify that the Jump Pack is fully charged. Recharge as needed, following the instructions in the "Charging the Jump Pack" section on page 6.
2. Turn off the vehicle ignition switch and all accessories (lights, radio, climate control, etc.).
3. Turn Clamp Power Switch on the Jump Pack to the OFF position. You may leave the Work Light on if needed.
WARNING! TO PREVENT SERIOUS INJURY: DO NOT TOUCH POSITIVE AND NEGATIVE BATTERY CLAMPS TOGETHER.
4. Connect the red Positive Battery Cable to the vehicle's positive battery terminal. Connect the black Negative Battery Cable to a nonmoving metal part of the vehicle.

WARNING! TO PREVENT SERIOUS INJURY:

DO NOT CONNECT TO THE NEGATIVE TERMINAL OF THE BATTERY.

5. When the correct connection has been made, turn the Clamp Power Switch to the ON position.
6. WAIT FIVE MINUTES, then start the vehicle. If the vehicle does not start, wait an additional 3 minutes before trying again.

WARNING! THE VEHICLE WILL NOT START IF YOU DO NOT WAIT AT LEAST 5 MINUTES.

7. After the vehicle is started, turn the Clamp Power Switch to the OFF position. Remove the black Negative Battery Cable first, and then the red Positive Battery Cable.

Running/Charging DC Appliances

1. Press the Battery Test button to verify that the Jump Pack is fully charged. Recharge as needed, following the instructions in the “Charging the Jump Pack” section on page 6.
2. Make sure the total wattage of the appliance is within the range of the Jump Pack. See “DC Appliance Compatibility” on page 7.
3. Make sure that the Clamp Power Switch and appliance are off.
4. Plug the appliance into the 12VDC Outlet.
5. Turn on the appliance.
6. When finished using, turn off and unplug the appliance.

Running/Charging USB Devices

1. Press the Battery Test button to verify that the Jump Pack is fully charged. Recharge as needed, following the instructions in the “Charging the Jump Pack” section on page 6.
2. Plug the device into the USB Port.
3. When finished, unplug the device from the USB Port.

Maintenance and Servicing



Procedures not specifically explained in this manual must be performed only by a qualified technician.



WARNING

TO PREVENT SERIOUS INJURY: Unplug the Jump Pack, turn the Power Switch off and allow Jump Pack to cool completely before performing any inspection, maintenance, or cleaning procedures.

1. BEFORE EACH USE, inspect the general condition of the Jump Pack. Check for:
 - loose hardware,
 - cracked or broken parts,
 - damaged electrical wiring or cable insulation, and
 - any other condition that may affect its safe operation.
2. Keep the unit clean and clamps free of dirt, debris, or grease.
3. For longer working life, protect Jump Pack from sunlight and moisture.

4. AFTER USE, wipe external surfaces of the Jump Pack with clean cloth.
5. CONTAINS A NON-SPILLABLE, SEALED LEAD-ACID BATTERY. THE BATTERY MUST BE RECYCLED OR DISPOSED OF PROPERLY.

Battery Replacement and Disposal

LEAD BATTERIES MUST BE RECYCLED OR DISPOSED OF PROPERLY.

WARNING! To prevent damage or serious injury, the replacement battery must be identical to the original battery.

Replace the Battery when the red light comes on while pressing the Battery Test Button after recharging.

1. Remove all ten screws from the back of the case and lift off the panel.
2. Lift out the battery without damaging the circuit board.

Note: Notice how the red and black cables connect to the old battery and make sure to keep them in place, connecting them to the new battery.
3. Detach the recharging wires and battery cables from the battery terminals.
4. Position the replacement battery with the label facing out, and make sure the red (+) recharging wire and battery cable is attached to the positive (+) battery terminal. Connect both of the recharging wires and battery cables.
5. Carefully slide the battery into the compartment without damaging the circuit board.
6. Replace the back panel and the screws.

Parts List and Diagram

PLEASE READ THE FOLLOWING CAREFULLY

THE MANUFACTURER AND/OR DISTRIBUTOR HAS PROVIDED THE PARTS LIST AND ASSEMBLY DIAGRAM

IN THIS MANUAL AS A REFERENCE TOOL ONLY. NEITHER THE MANUFACTURER OR DISTRIBUTOR MAKES ANY REPRESENTATION OR WARRANTY OF ANY KIND TO THE BUYER THAT HE OR SHE IS QUALIFIED TO MAKE ANY REPAIRS TO THE PRODUCT, OR THAT HE OR SHE IS QUALIFIED TO REPLACE ANY PARTS OF THE PRODUCT. IN FACT, THE MANUFACTURER AND/OR DISTRIBUTOR EXPRESSLY STATES THAT ALL REPAIRS AND PARTS REPLACEMENTS SHOULD BE UNDERTAKEN BY CERTIFIED AND LICENSED TECHNICIANS, AND NOT BY THE BUYER. THE BUYER ASSUMES ALL RISK AND LIABILITY ARISING OUT OF HIS OR HER REPAIRS TO THE ORIGINAL PRODUCT OR REPLACEMENT PARTS THERETO OR ARISING OUT OF HIS OR HER INSTALLATION OF REPLACEMENT PARTS THERETO.

Parts List

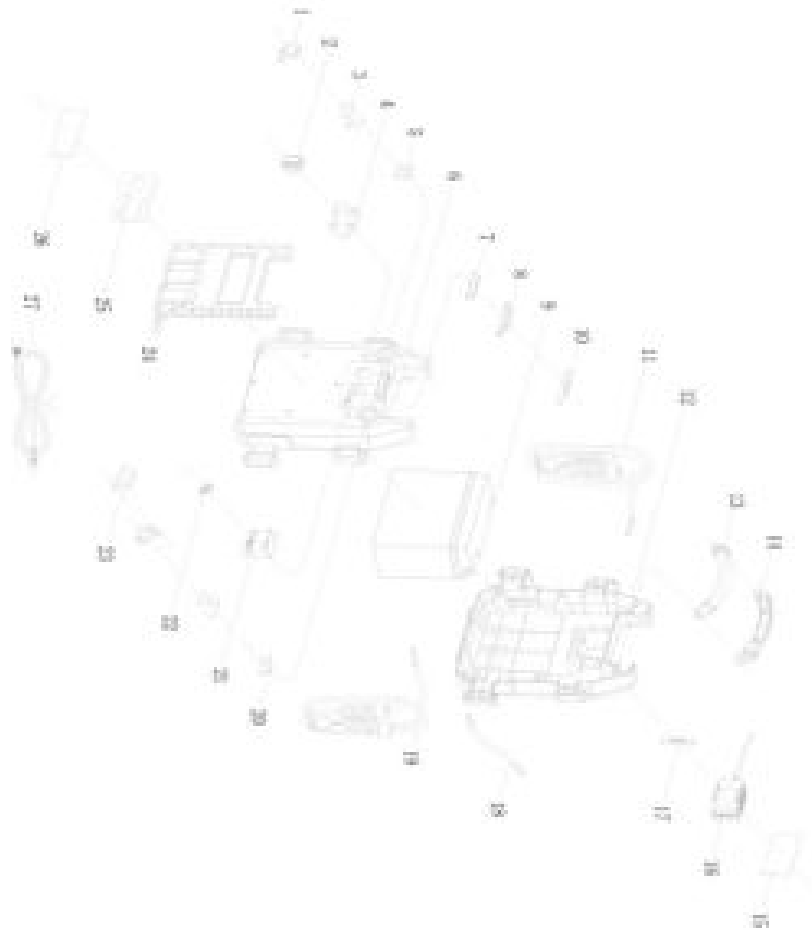
| Part | Description | Qty | Part | Description | Qty |
|------|------------------------------|-----|------|--------------------------------|-----|
| 1 | 12VDC Outlet Cover | 2 | 15 | Back Case Label | 1 |
| 2 | Clamp Power Switch Cap | 1 | 16 | Internal Adaptor | 1 |
| 3 | Negative 12VDC Outlet | 2 | 17 | Adaptor Stator | 1 |
| 4 | Clamp Power Switch | 1 | 18 | Internal Connection Wire | 1 |
| 5 | Positive 12VDC Outlet | 2 | 19 | Negative Battery Cable (Black) | 1 |
| 6 | Middle Case | 1 | 20 | Positive 12VDC Outlet | 1 |
| 7 | Light Lens | 1 | 21 | Main Circuit Board | 1 |
| 8 | Light Reflector | 1 | 22 | USB Cap | 1 |
| 9 | Battery | 1 | 23 | Overcurrent Protector | 1 |
| 10 | Lamp Control Board | 1 | 24 | Front Case | 1 |
| 11 | Positive Battery Cable (Red) | 1 | 25 | Panel Label | 1 |
| 12 | Back Case | 1 | 26 | Front Case Label | 1 |
| 13 | Handle (Front) | 1 | 27 | US Extension Cord | 1 |
| 14 | Handle (Back) | 1 | | | |

Record Product's Serial number Here:

Note: If the product has no serial number, record the month and year of purchase instead.

Note: Some parts are listed and shown for illustration purposes only, and are not available individually as replacement parts. Internal parts are not user-serviceable and are not available. Specify UPC 193175452528 when ordering parts.

Assembly Diagram



Limited 90 Day Warranty

Harbor Freight Tools Co. makes every effort to assure that its products meet high quality and durability standards, and warrants to the original purchaser that this product is free from defects in materials and workmanship for the period of 90 days from the date of purchase. This warranty does not apply to damage due directly or indirectly, to misuse, abuse, negligence or accidents, repairs or alterations outside our facilities, criminal activity, improper installation, normal wear and tear, or to lack of maintenance. We shall in no event be liable for death, injuries to persons or property, or for incidental, contingent, special or consequential damages arising from the use of our product. Some states do not allow the exclusion or limitation of incidental or consequential damages, so the above limitation of exclusion may not apply to you. THIS WARRANTY IS EXPRESSLY IN LIEU OF ALL OTHER WARRANTIES, EXPRESS OR IMPLIED, INCLUDING THE WARRANTIES OF MERCHANTABILITY AND FITNESS.

To take advantage of this warranty, the product or part must be returned to us with transportation charges prepaid. Proof of purchase date and an explanation of the complaint must accompany the merchandise. If our inspection verifies the defect, we will either repair or replace the product at our election or we may elect to refund the purchase price if we cannot readily and quickly provide you with a replacement. We will return repaired products at our expense, but if we determine there is no defect, or that the defect resulted from causes not within the scope of our warranty, then you must bear the cost of returning the product. This warranty gives you specific legal rights and you may also have other rights which vary from state to state.

CONTACTS

- **ADDRESS:** 26541 Agoura Road Calabasas, CA 91302
- **TEL:** 1-888-866-5797

DOWNLOAD RESOURCES

- [CEN-TECH 3-in-1 Portable Jump Pack](#) [pdf] Owner's Manual CEN-TECH, 3-in-1, Portable, Jump Pack, 58979
- Read more: <https://manuals.plus/cen-tech/3-in-1-portable-jump-pack-manual#ixzz7gaHXDFvi>

FAQ'S

Can I use this jump pack to jump start a car?

Yes.

Can I use this jump pack to power a 12V device?

Yes, but it will not last very long.

How long will the jump pack last on a single charge?

This depends on how much power you are drawing from the unit. The larger the load, the shorter the run time.

How long does it take to charge the unit?

It takes about 10 hours to fully charge using the included wall charger.

How do I know if it is charged?

The LED light on the front of the unit will turn green when it is fully charged. If you are charging it with a USB cable, you can use your phone or tablet's battery level indicator to determine when it is fully charged.

How do you know when a CEN tech battery is fully charged?

The green Charging Indicator light will remain on after charging is complete. The battery power level must be checked periodically when charging, and the Jump Pack must be unplugged when it is fully charged. NOTE: FAILURE TO RECHARGE THE JUMP PACK WILL VOID THE WARRANTY.

What is the best amp for a portable jump starter?

400 to 600 amps will be more than enough to jump-start any normal, consumer vehicle. Commercial vehicles may require up to 1500 or 2000 amps. Compact and small vehicles can be boosted with as little as 150 amps.

How long does a jump starter take to charge a car battery?

Recharge the unit for at least 3 hours. Some units will require 12-24 hours for a complete charge. It's also a good idea to have your vehicle battery checked by a local battery centers to see if a new battery is necessary and how long your battery can probably last.

What does it mean when battery charger blinks?

Fast flashing indicates a poor connection between the battery and charger or a problem with the battery pack. Remove the battery from the charger and then use a dry cloth or cotton swap to clean the metal contact terminals on the battery. Afterwards, try charging the battery again.

Do you hook up red or black first?

Attach the red jumper cables first. Start by clamping one red cable to the positive side of the battery that won't start. Then attach the other red clamp to the positive side of the working battery. Next, clamp one black cable to the negative side of the working battery.

How do you charge a CEN Tech 3 in 1?

Plug the 120VAC Adapter into a 2 or 3-prong outlet. Input Plug on the back of the Jump Pack. The Charging Indicator lights will illuminate in a cycle from red, to yellow, to green while the unit is charging. The green Charging Indicator light will remain on after charging is complete.

Can a completely dead battery be recharged?


It is possible to recharge a dead battery, and depending upon the situation you are in, a dead battery is generally an easy fix, whether you are stuck in your garage and can handle it yourself or you are in the middle of nowhere and need professional, quick, and efficient service in the blink of an eye.

CEN-TECH®

CEN-TECH 3-in-1 Portable Jump Pack

[www://harborfreight.com/](http://www.harborfreight.com/)

Documents / Resources

| | |
|---|---|
|  | <p>CEN-TECH 3-in-1 Portable Jump Pack [pdf] Owner's Manual CEN-TECH, 3-in-1, Portable, Jump Pack, 58979</p> |
|---|---|