



# cellgate W482 Series IP Telephone Entry and Access Control Installation Guide

[Home](#) » [Cellgate](#) » cellgate W482 Series IP Telephone Entry and Access Control Installation Guide 

## Contents

- [1 cellgate W482 Series IP Telephone Entry and Access Control](#)
- [2 Product Information](#)
- [3 Product Usage Instructions](#)
- [4 Items Included in Kit](#)
- [5 Wiring Examples](#)
- [6 Interface Circuit Board](#)
- [7 VPN Connection](#)
- [8 Wiring](#)
- [9 Interface Wiring Diagram](#)
- [10 Magnetic Switch Setup](#)
- [11 Mounting to Standard](#)
- [12 Documents / Resources](#)
  - [12.1 References](#)



**cellgate W482 Series IP Telephone Entry and Access Control**



## Product Information

- **Specifications**

- **Product Model:** W482 Series
- **Product Number:** AA1MLPE VPN
- **Power Supply:** 12 Volt DC
- **Recommended Wiring:** 18/6 shielded for the main device, 18/4 shielded for optional Wiegand devices

- **Items Included in Kit**

- Watchman 480 Unit
- 12 Volt DC Power Supply
- Magnetic Read Switch
- Keys
- Nuts x 4
- Bolts x 4
- Install Guide
- Customer Information Packet

## Product Usage Instructions

- **Power Supply Wiring**

- To connect the power supply, follow these steps:

- Wire the main power from the transformer to the power connector on the circuit board.
- Connect the gate trigger wires from the Normally Open (NO) and Common (C) terminals to the free-exit or exit terminals on the gate operator.
- Connect the gate status wires on the 6 pin connector on the main relay and input plug to the magnetic switch or a Dry Contact, Normally Closed (NC) relay on the gate operator.
- If using an optional 26-bit reader (e.g., keypad, card reader, RFID, clicker), wire the device to the Wiegand connection on the interface circuit board.
- If adding an external camera, refer to the Camera Guide for wiring instructions.
- Test and activate the system using the test credentials provided in the Activation & Test Process document.

#### • **Magnetic Switch Setup**

- To set up the magnetic switch, follow these steps:
- Place the Mag Switch anywhere that allows A and B to be pulled at least 2 inches away from each other when the gate is open and within 1.5 inches when the gate is closed.

#### • **FAQ**

- **Q:** What wiring should I use for the main device and optional Wiegand devices?
- **A:** We recommend using 18/6 shielded wiring for the main device and 18/4 shielded wiring for optional Wiegand devices.
- **Q:** Can I remove the SIM card from the in-hand modem?
- **A:** No, please do not remove the SIM card from the in-hand modem.
- **Q:** How should I wire for solar power?
- **A:** Please refer to the Wiring for Solar Power section in the user manual for detailed instructions.

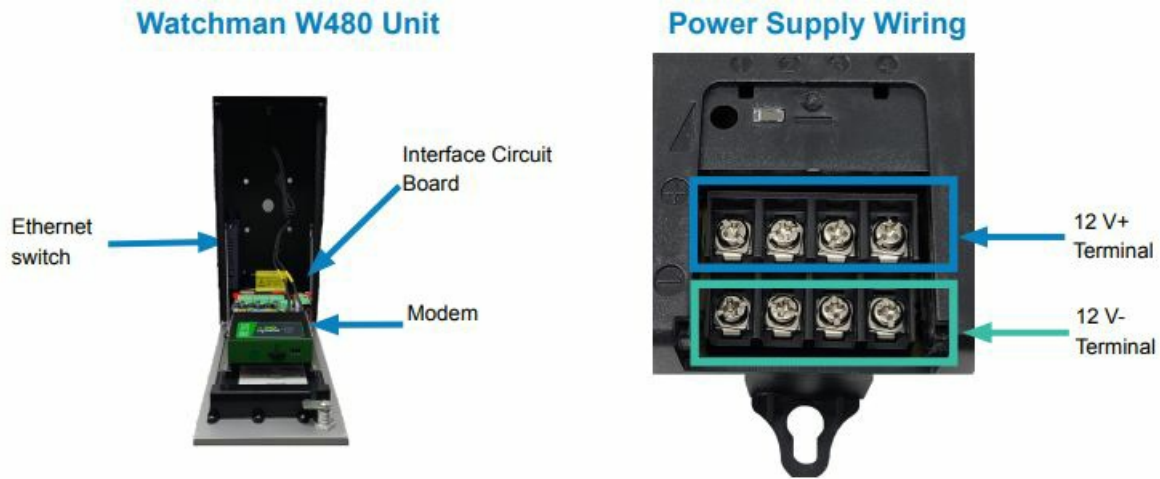
### **Items Included in Kit**

The following items are included in your W480 delivery.

1. Watchman 480 Unit
2. 12 Volt DC Power Supply
3. Magnetic Read Switch
4. Keys
5. Nuts X 4
6. Bolts X 4
7. Install Guide
8. Customer Information Packet

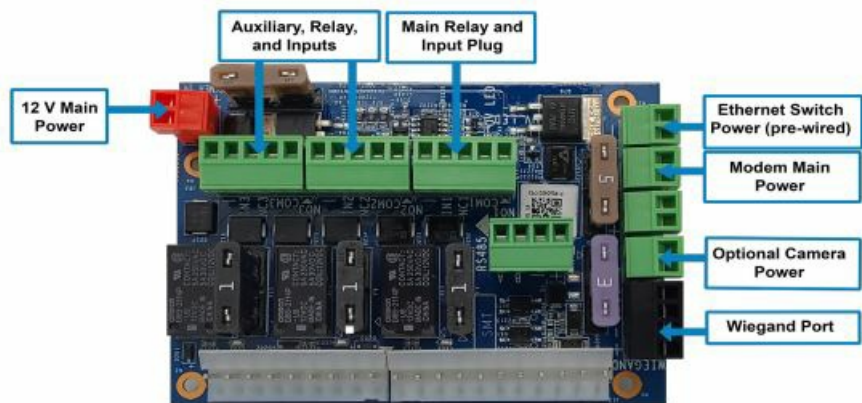
**NOTE** Leave one key with the customer.

### **Wiring Examples**



**Recommended wiring:** 18/6 shielded for main device, and 18/4 shielded for optional Wiegand devices.

## Interface Circuit Board

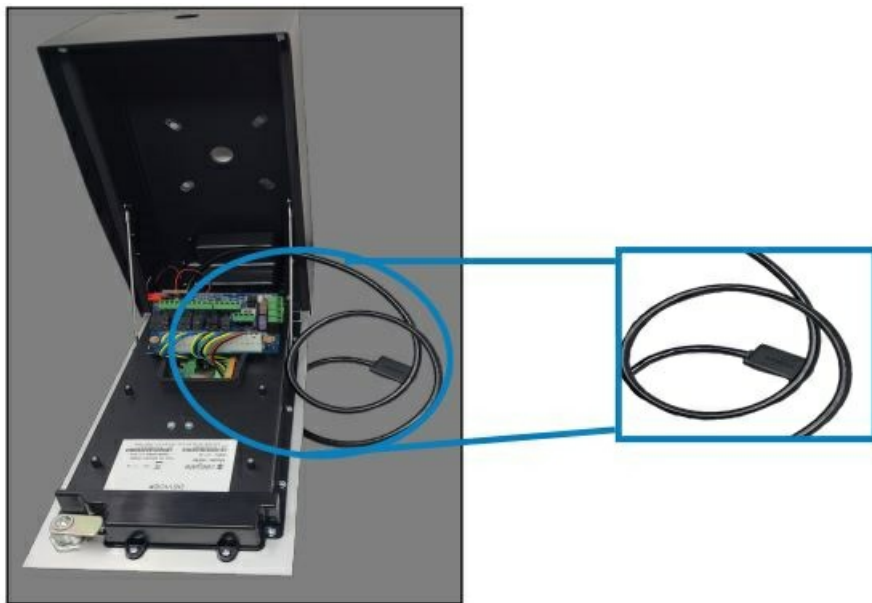


The circuit board is oriented the same as the Watchman install. If you requested an expansion board, we installed it.

**We recommend the following gauges (ga) for each distance:**

- **18 ga stranded:** up to 25 ft
- **16 ga stranded:** up to 50 ft
- **12 ga stranded:** up to 60 ft

## VPN Connection



### Product Numbers: AA1MLPE VPN

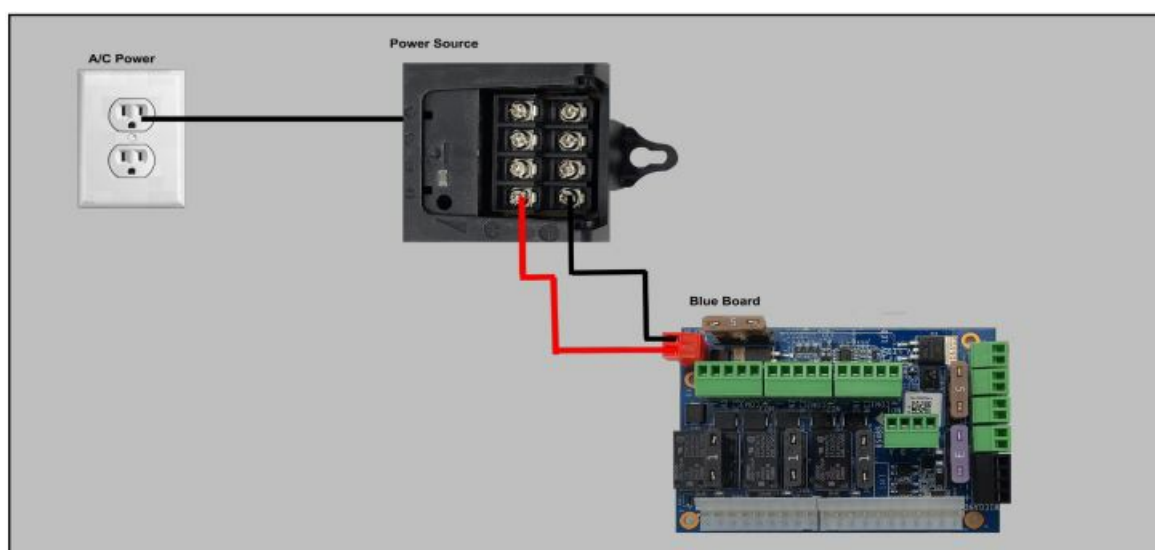
- The VPN connection ships DHCP enabled and does not support external cameras.
- In the image to the left, the black chord is the Ethernet connection.

### NOTE

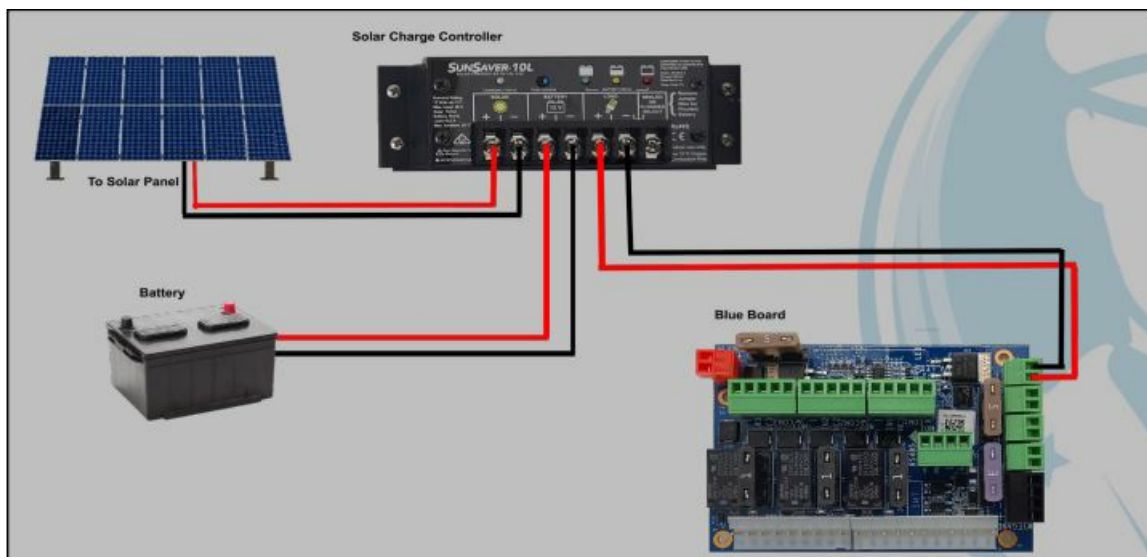
- Ethernet connection is required.
- Do not remove SIM card from the in-hand modem.

## Wiring

### Wiring with Transformer



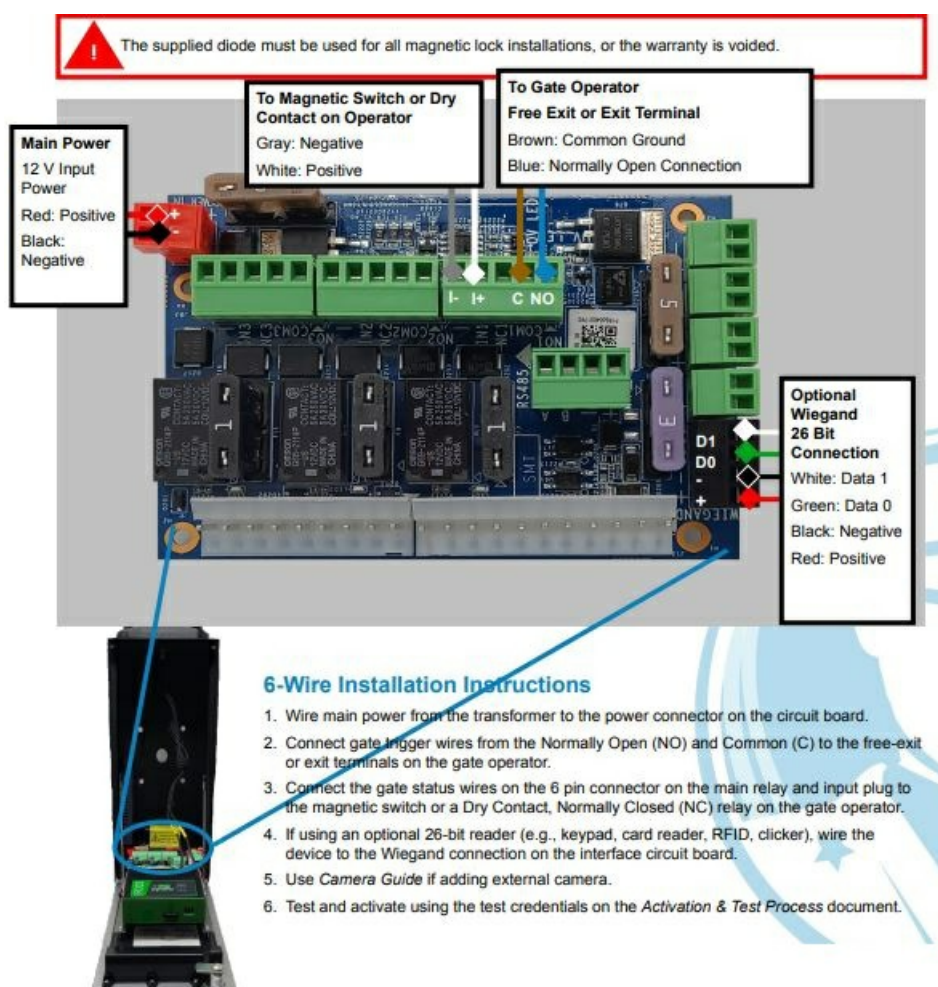
### Wiring for Solar Power



## Interface Wiring Diagram

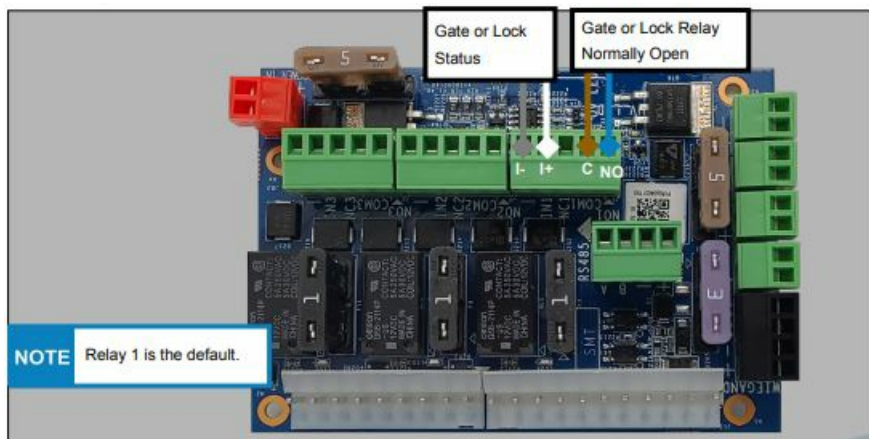
Oriented the same as the Watchman install

The supplied diode must be used for all magnetic lock installations, or the warranty is voided.

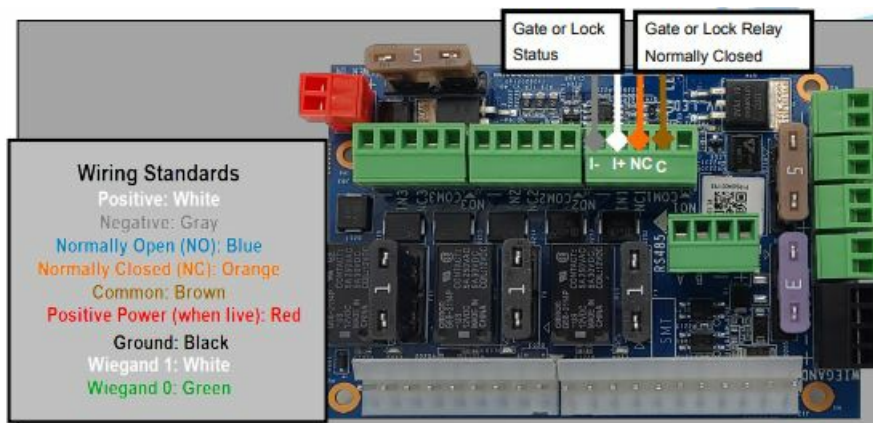


Dry Contact Relay, Normally Open Dry Contact No Voltage to Lock or Gate

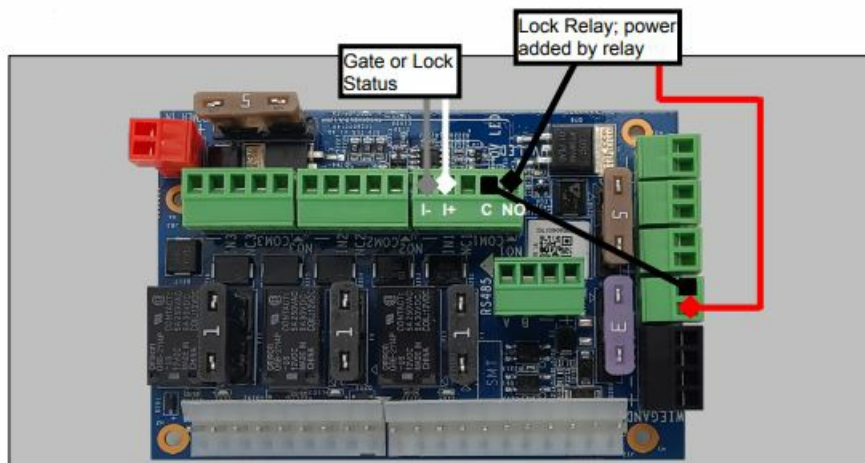




**Dry Contact Relay, Normally Closed Dry Contact No Voltage to Lock or Gate**



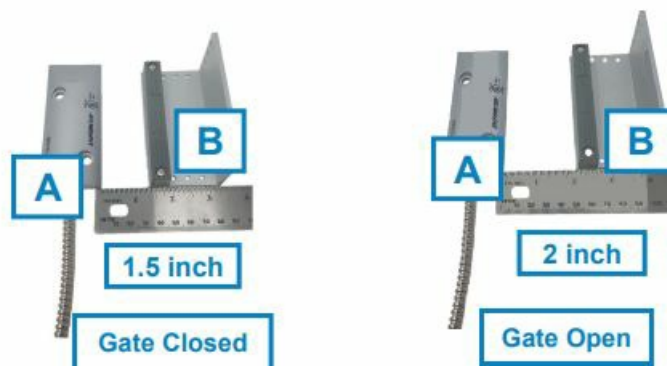
**Lock Requiring Constant 12 V: Wet Contact Relay, Normally Open Door/lock opens (releases) when power is added.**



**Lock Requiring Constant 12 V: Wet Contact Relay, Normally Closed**



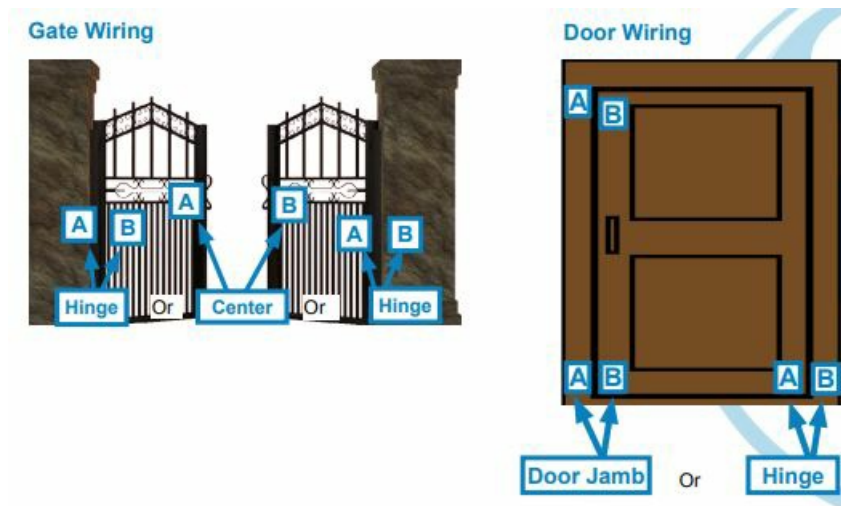




## NOTE

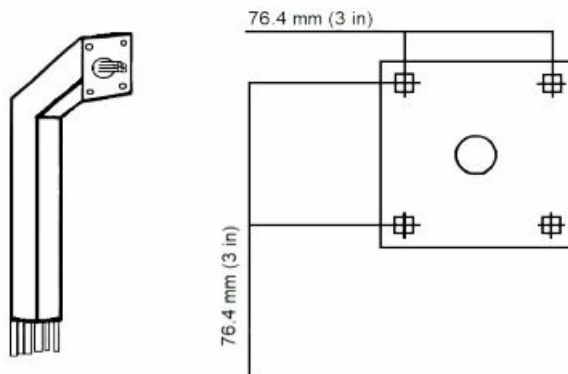
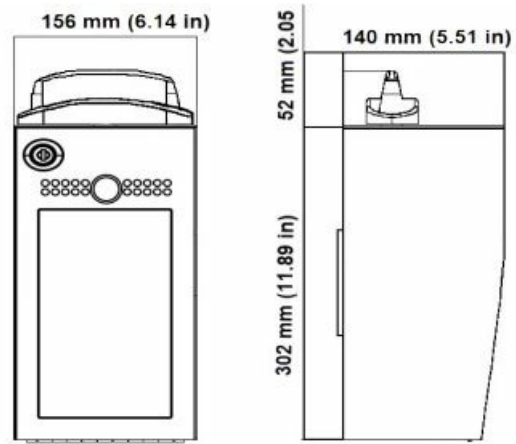
- Gate statuses can be inverted. If needed, call CellGate to invert.

## Magnetic Switch Wiring

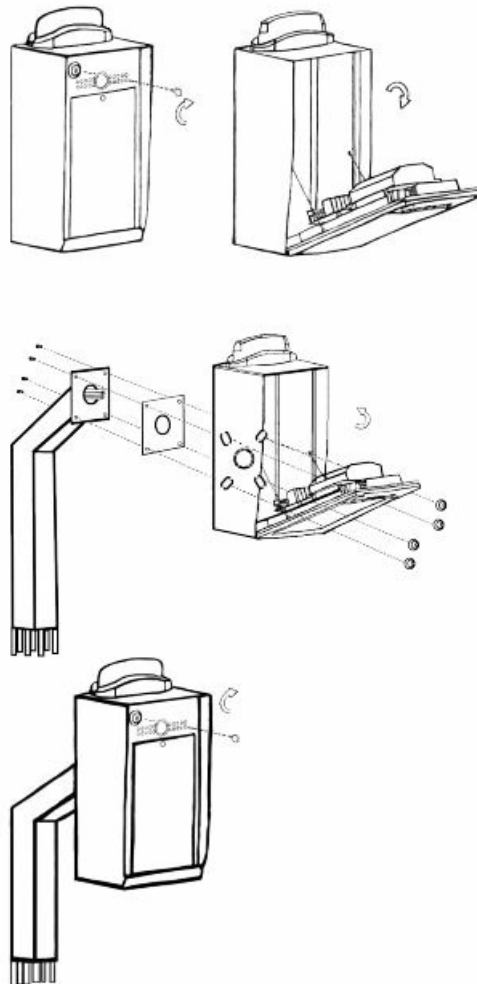


## Mounting to Standard

## Mounting to Standard Pedestal Mount




**Mounting to Standard Pedestal Mount, Continued**



- [cell-gate.com](http://cell-gate.com).
- 1.855.694.2837
- **Cellgate Support:** 972-231-1999, opt. 2

## Documents / Resources

	<p><a href="#">cellgate W482 Series IP Telephone Entry and Access Control</a> [pdf] Installation Guide W482 Series IP Telephone Entry and Access Control, W482 Series, IP Telephone Entry and Access Control, Telephone Entry and Access Control, Entry and Access Control</p>
---	--

## References

- [User Manual](#)