

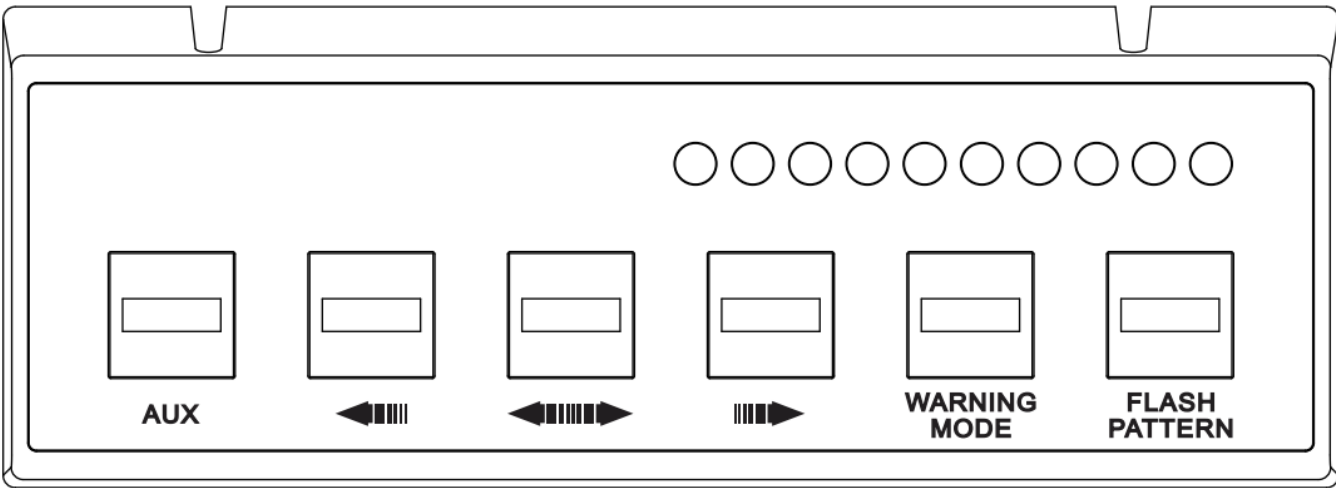


Cell2 SW610 Multi-Purpose 6-Switches Control Panel User Manual

[Home](#) » [Cell2](#) » Cell2 SW610 Multi-Purpose 6-Switches Control Panel User Manual 



Multi-purpose 6-switches Control Panel



Contents

- [1 SW610 Multi-Purpose 6-Switches Control Panel](#)
- [2 Switch Specification](#)
- [3 Screw Mount Installation](#)
- [4 Documents / Resources](#)
- [5 Related Posts](#)

SW610 Multi-Purpose 6-Switches Control Panel

Wiring

RED to +VDC
BLACK to -GND
WHITE to LED Indicator Signal (Traffic Arrow or Lightbar)
GREEN AUX (Output signal for optional relay)
ORANGE Left Arrow
BLUE Right Arrow
BROWN Warning Mode
YELLOW Flash Pattern
[ON/OFF Switch]
[ON/OFF Switch]
[ON/OFF Switch]
[ON/OFF Switch]
[Momentary Switch]

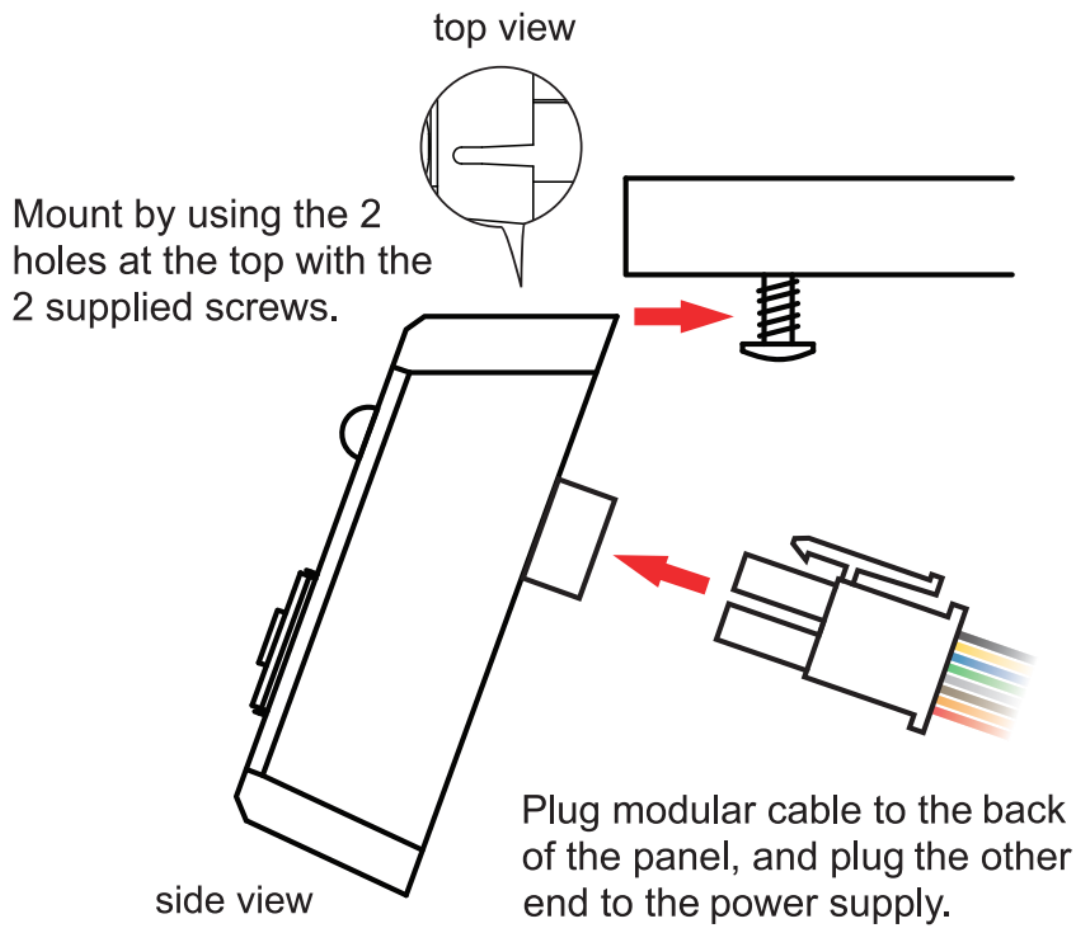
Switch Specification

Input Voltage: 10~30 VDC
Input Current: 0.2A / port 1.0A / 6 port
Output Voltage: 10~24 VDC
Output Current: 0.2A x 1 port (AUX) ; 0.01A x 5 ports
Fuse Rating: 2A

Recommended Relay Specification (User-supplied)

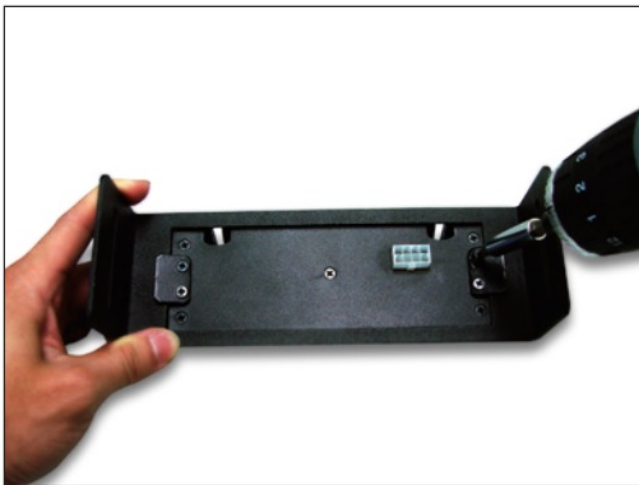
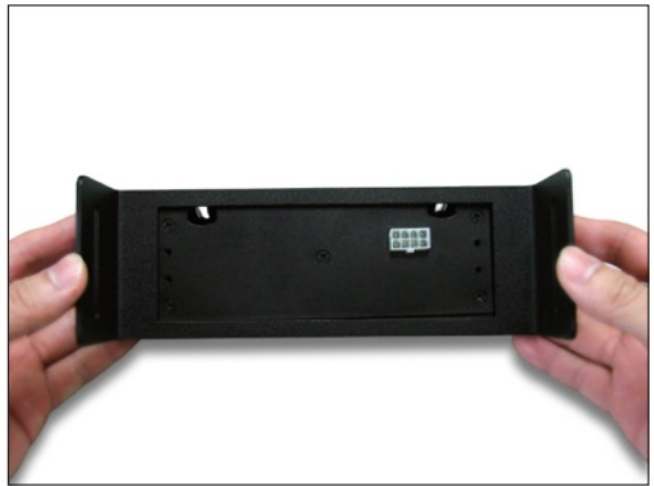
Input Voltage: 10~24 VDC
Input Current: < 200mA

Screw Mount Installation



NOTE: Connect only the RED and BLACK wires to the power supply wiring harness.

Console Mount Installation



Documents / Resources

	<p>Cell2 SW610 Multi-Purpose 6-Switches Control Panel [pdf] User Manual SW610 Multi-Purpose 6-Switches Control Panel, SW610, Multi-Purpose 6-Switches Control Panel, 6-Switches Control Panel, Control Panel</p>
--	---