



Contents [[hide](#)]

- 1 [Cecotec RY72A240300M2 Window Cleaning Robot](#)
- 2 [Specifications](#)
- 3 [Product Information](#)
- 4 [Product Usage Instructions](#)
- 5 [SAFETY INSTRUCTIONS](#)
- 6 [PARTS AND COMPONENTS](#)
- 7 [BEFORE USE](#)
- 8 [OPERATION](#)
- 9 [Operation](#)
- 10 [Indicator lights](#)
- 11 [CLEANING AND MAINTENANCE](#)
- 12 [TROUBLESHOOTING](#)
- 13 [TECHNICAL SPECIFICATIONS](#)
- 14 [DISPOSAL OF OLD ELECTRICAL AND ELECTRONIC APPLIANCES](#)
- 15 [TECHNICAL SUPPORT AND WARRANTY](#)
- 16 [FAQs](#)
- 17 [Documents / Resources](#)
 - 17.1 [References](#)



Cecotec RY72A240300M2 Window Cleaning Robot



Specifications

- Product Name: CONGA WINDROID 1090 DOUBLE SPRAY CONNECTED
- Type: Window cleaning robot

Product Information

The CONGA WINDROID 1090 DOUBLE SPRAY CONNECTED is a cutting-edge window cleaning robot that provides efficient and convenient cleaning for your windows.

Product Usage Instructions

Parts and Components

Before using the window cleaning robot, familiarize yourself with all the parts and components listed in the user manual.

Before Use

Ensure the robot is fully charged before the first use. Place it on a clean and dry surface near the window you want to clean.

Operation

Follow the user manual instructions to set up the robot on the window. Use the remote

control or app to start the cleaning process.

Cleaning and Maintenance

After each use, clean the robot's brushes and sensors. Regularly check for any debris or blockages that might affect its performance.

Troubleshooting

If the robot encounters any issues during operation, refer to the troubleshooting section of the user manual for solutions.

SAFETY INSTRUCTIONS

Read these instructions thoroughly before using the appliance. Keep this instruction manual for future reference or new users.

- Ensure that the mains voltage matches the voltage specified on the device rating label and that the plug is earthed.
- This appliance can be used by children aged 8 years and above and people with reduced physical, sensory, or mental capabilities or lack of experience and knowledge if they have been given supervision or instruction concerning the use of the appliance in a safe way and understand the hazards involved. Children must not play with the appliance. Cleaning and user maintenance should not be carried out by unsupervised children.
- This appliance is designed for domestic use only and is not intended for bars, restaurants, farmhouses, hotels, motels, or offices.
- The device may only be used with the power supply unit provided with the appliance.
- The device must only be supplied at a safety extra-low voltage by the power indicated on the device.
- This device has irreplaceable batteries.
- **WARNING:** To recharge the battery, only use the removable power supply unit provided with the appliance, with reference number RY72A240300M2.
- Non-rechargeable batteries must not be recharged.
- The supply terminals must not be short-circuited.
- The appliance must not be left unattended while in use.
- The filling opening must not be opened during use.

- The appliance should not be used if it has fallen, shows any visible sign of damage, or if it leaks.
- Keep the appliance out of the reach of children when it is in operation or cooling down.
- Check the power cable regularly for visible damage. If the cable is damaged, it must be repaired by the official Cecotec Technical Support Service to avoid any type of danger.
- This product can only be assembled, disassembled, and repaired by qualified personnel.
- Do not touch the cable, power supply, or charger with wet hands.
- Keep the robot away from clothing, curtains, and any other similar materials. Keep hair, fingers, and other body parts away from the robot's openings.
- Do not sit or place heavy or sharp objects on top of the appliance or its cord.
- Do not operate the appliance close to heat sources, flammable substances, wet surfaces, where it can fall or be pushed into water, or allow it to come into contact with water or other liquids.
- The appliance can only be operated with the supplied battery and power adapter. The use of other components or accessories could cause the risk of fire, electric shock, or product damage.
- Do not expose the device to excessive humidity or rain, and keep it away from liquids.
- Do not expose the appliance to direct sunlight, intense light, or strong magnetic fields.
- Allow adequate ventilation around the adapter when using it to operate the device. Do not cover the power adapter with objects that could reduce cooling.
- To avoid risks, do not disassemble, short-circuit, burn, or heat the battery above 60 °C.
- Make sure the appliance is not unplugged from the power supply or turned off after every use and before carrying out any cleaning or maintenance tasks. To disconnect it, do not pull from the power cord. Instead, pull on the adapter.
- Do not twist, bend, pull, or damage the power cable. Do not place any heavy or sharp objects on the cable; this could cause a fire or electrical shock.
- Do not use the robot on frameless glass.
- Do not use the product on cracked glass. Reflective coating or glass may be slightly scratched due to dirt on the glass during operation.
- Supervise children to prevent them from playing with the appliance. Close supervision is necessary when the appliance is being used by or near children.

- It is not recommended for use on glass less than 3 cm thick.
- **NOTE:** You cannot activate the robot without having secured the safety rope to a solid surface at home. After and before every use, you must check that the safety rope is not damaged. You must also check that it is properly secured and at the appropriate height to prevent the robot from falling.

Instructions on the remote control batteries

- Different types of batteries or new and used batteries must not be mixed.
- Batteries must be inserted according to the correct polarity.
- If the device is to be stored unused for a long period of time, the batteries should be removed.
- Keep batteries away from children and animals; they could be harmful if swallowed. In case of ingestion, seek medical assistance immediately.
- In case of battery leakage, avoid contact with the skin, eyes, or mucous membranes.
- **WARNING:** In case of contact with acid, rinse the affected areas with abundant fresh water immediately and contact a doctor as soon as possible.
- Make sure the battery contacts in the appliance are clean before inserting the batteries. Clean them if necessary.
- Only use the battery type specified in the technical specifications.
- Batteries should not be recharged or reactivated, dismantled, thrown into fire, immersed in fluids, or short-circuited.
- Keep batteries out of the reach of children when there is a risk of ingestion.
- Battery ingestion can cause burns, soft tissue perforation, and death. Severe burns may occur within two hours of ingestion.
- In case of battery ingestion, please seek medical help immediately.

PARTS AND COMPONENTS

Figure 1

1. Spraying nozzle
2. Power button
3. Hole for safety rope
4. Safety rope

5. Mop
6. Remote control receiver
7. Spraying nozzle
8. Mop

NOTE:

The graphics in this manual are schematic representations and may not exactly match the device.

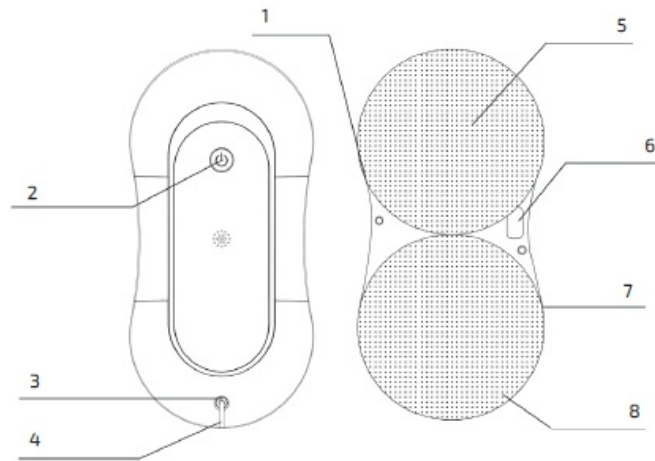
BEFORE USE

- This appliance is packaged in a way to protect it during transport. Take the appliance out of its box and remove all packaging materials. You can keep the original box and other packaging elements in a safe place to prevent damage to the appliance if you need to transport it in the future. In case the original packaging is disposed of, make sure all packaging materials are recycled accordingly.
- Make sure all parts and components are included and in good condition. If there is any piece missing or in bad condition, contact the official Cecotec Technical Support Service immediately.

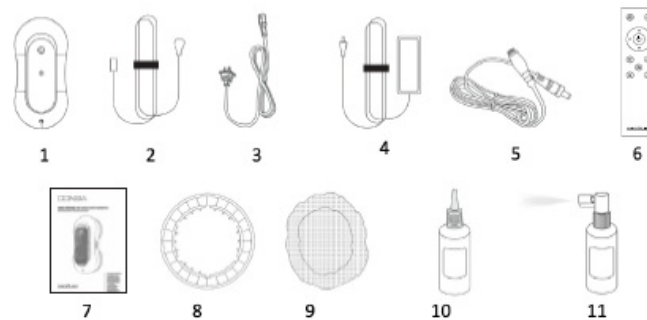
Box content

Fig. 2

1. Robot
2. Safety rope
3. AC cable
4. Power adapter
5. Extension lead
6. Remote control
7. Instruction manual
8. Mop coupling
9. Mop
10. Filling bottle
11. Water spraying bottle



Мал./ Рис./ Fig. 1



Мал./ Рис./ Fig. 2

OPERATION

Use

Connect the robot

- A. Connect the AC power cable to the adapter.
- B. Connect the power adapter to the extension lead.
- C. Connect the AC power cable to a power outlet. Fig. 3

Charge the robot

The robot has a built-in backup battery to supply power in the event of a power failure. Make sure that the battery is fully charged (when this happens, the blue indicator light will switch on).

- A. First, connect the power cable to the appliance and plug the cable into a suitable socket. The blue and red indicator lights will flash alternately. This indicates that the robot is charging.

- B. When the blue indicator light is steady, the battery is fully charged.

Attach the mop and its coupling.

Fig. 4

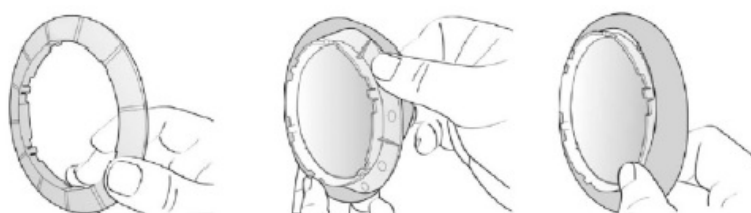
Place the mop in its coupling and then place both elements on the corresponding part of the robot. Make sure they fit correctly to avoid pressure leaks.

Attach the safety rope.

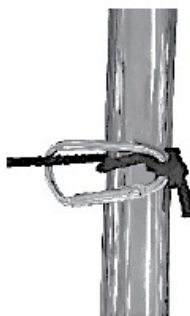
- A. If you are going to use the robot on a window that does not have a balcony, you must place warning signs on the floor to warn of the danger.
- B. Before using the robot, check if the safety rope is damaged or if the knot is loose.
- C. Before using the rope, check that it is properly tied to a fixed object in the room to avoid any danger. Fig. 5



Мал./ Рис./ Fig. 3



Мал./ Рис./ Fig. 4



Мал./ Рис./ Fig. 5

Add water or a cleaning solution

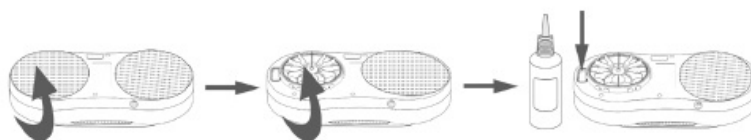
- A. The robot's tank should only be filled with water or a specific cleaning product diluted in water.
- B. Do not add any other substances.
- C. Open the silicone cap and add the cleaning solution. Fig. 6

Attach the robot to the glass

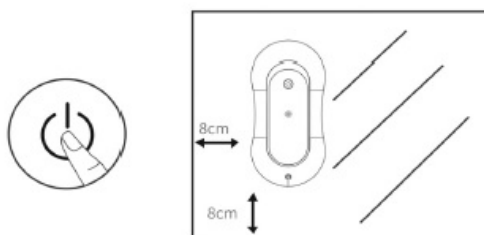
- A. Briefly press the power button to start the motor.
- B. Attach the robot to the glass and keep it at a certain distance from the window frame.
- C. Before releasing it, make sure it is firmly attached to the glass. Fig. 7

Cleaning finished

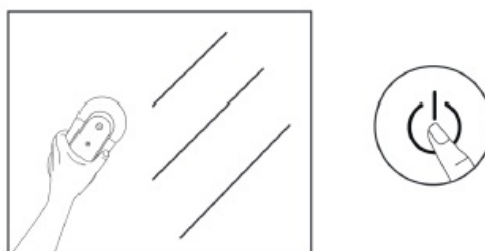
- A. Hold the robot with one hand and press the power button with the other hand for about 2 seconds to switch it off.
- B. Remove the robot from the window.
- C. Untie the safety rope and store the robot in a dry, well-ventilated place. Fig. 8



Мал./ Рис./ Fig. 6



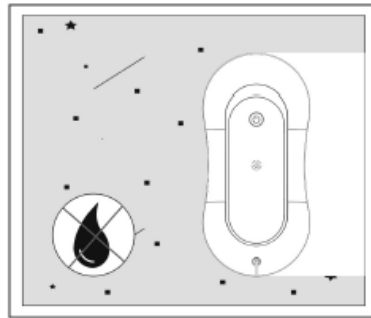
Мал./ Рис./ Fig. 7



Мал./ Рис./ Fig. 8

Operation

- 1. Wipe the glass surface with a dry cloth
- A. Before using the robot, wipe the glass surface with a dry cloth to remove dust. Do not use water.
- B. If you spray water (or cleaning solution) on the mop or glass, it will mix with the dust and turn into mud, which will reduce the effectiveness of the cleaning. Fig. 9



Мал./ Рис./ Fig. 9

Spray water

The robot is equipped with 2 water sprayers. When the robot is cleaning to the left, the left sprayer will be activated automatically. When the robot is cleaning to the right, the right sprayer will be activated automatically.

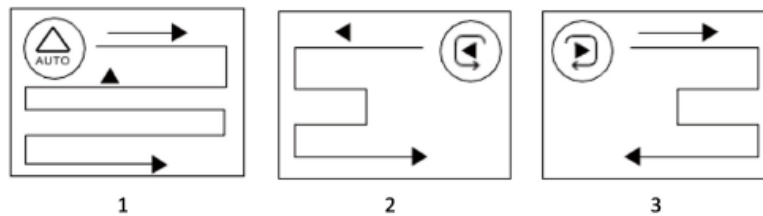
- 1. Automatic water spraying
- A. When the robot is cleaning, it will automatically spray water.
- B. If you press the auto-spraying button, the robot will beep, and this function will be deactivated.

Manual water spraying

Each time you press this button, the robot will spray water.

Path. Fig. 10

1. The robot will first move upwards and then downwards.
2. Movement to the left edge
3. Movement to the right edge



Remote control

- Use AAA batteries. Do not mix different types of batteries; doing so may damage the circuit.
- Do not mix old and new batteries.

	Manual water spraying		Upward movement
	Automatic water spraying		Movement to the left
	Start window cleaning		Movement to the right
	Start/pause		Downward movement
	Movement to the left edge		Movement upwards and then downwards
	Movement to the right edge		

Uninterruptible power system (UPS)

If there is a power failure, the robot will stay attached to the glass for about 20 minutes, but will not move forward. In addition, it will beep, and the red indicator light will flash. To prevent it from falling, remove it from the glass as soon as possible.

To do this, use the safety rope to gently pull the robot backwards. When doing so, try to be as close to the glass as possible to prevent the robot from touching the ground.

Indicator lights

Status	Indicator lights
1. The robot is charging	The blue and red indicator lights will flash alternately.

2. Complete charge	The blue indicator light is lit and remains steady.
3. Electric error	The red indicator light flashes and the appliance beeps.
4. The robot does not make enough vacuum	The red indicator light flashes and the appliance beeps.
5. The robot does not create a sufficient vacuum while cleaning	The red indicator light flashes and the appliance beeps.

Note: if the red indicator light flashes and the appliance beeps, check if the power adapter is correctly connected to the mains.

CLEANING AND MAINTENANCE

Replacing the remote control batteries

1. Open the remote control's battery compartment.
 2. Insert the batteries. Pay attention to polarity.
 3. Close the battery compartment by sliding the cover. Make sure it fits properly.
- Use a soft, damp cloth to clean the outside surface of the product.
 - The cleaning cloths are washable and reusable.
 - Do not immerse the product in water or put it under running water.
 - Do not expose the robot to direct sunlight or high temperatures.

TROUBLESHOOTING

1. The first time you use a mop, the robot may clean slowly or even malfunction, especially if you have placed it on glass that is extremely dirty.
 - A. When removing the robot from the packaging, clean and dry the mop before use.
 - B. Spray a little water on the mop or glass surface to be cleaned.
 - C. Once the mop has been dampened, place it in its coupling and then in the corresponding part of the robot.

2. The robot shall perform a self-test process when you start it up. If it detects a problem and beeps, it means that the friction level is not adequate. This may be due to the following causes:
 - A. The mop is too dry.
 - B. The glass has some adhesive on it, so the robot will not be able to clean it.
 - C. The glass is too clean, making it too slippery for the robot.
 - D. You have placed the robot in a room where the humidity level is too high, making the glass too slippery.
3. The robot cannot clean the top left side of the glass.

Sometimes the glass is slippery, and the robot does not manage to clean this part. If this happens, use the manual cleaning mode.
4. Possible causes of the robot slipping and not being able to reach the top of the glass:
 - A. The friction level is too low. The glass has some adhesive on it, so the robot will not be able to clean it.
 - B. The mop is too wet.
 - C. The glass is too clean, making it too slippery for the robot.
 - D. You have placed the robot in a room where the humidity level is too high, making the glass too slippery.

TECHNICAL SPECIFICATIONS

- Product reference: EU01_100140
- Product: Conga Windroid 1090 Double Spray Connected
- Rated Input: 100-240 V AC 50/60 Hz
- Rated Output: 24 V DC 3A
- Rated Power: 72 W
- Battery: 14.8 V 500 mAh 7.4 Wh
- Charging time: approximately 2 hours.
- Autonomy up to 30 minutes (for mains failure)
- Operating temperature: 0 °C~75 °C
- Remote control operation with 2 AAA batteries.
- Technical specifications may change without prior notification to improve product quality.

DISPOSAL OF OLD ELECTRICAL AND ELECTRONIC APPLIANCES

This symbol indicates that, according to the applicable regulations, the product and/or batteries must be disposed of separately from household waste. When this product reaches the end of its shelf life, you should dispose of the cells/batteries/accumulators and take them to a collection point designated by the local authorities.

Consumers must contact their local authorities or retailers for information concerning the correct disposal of old appliances and/or their batteries.

Compliance with the above guidelines will help protect the environment.

TECHNICAL SUPPORT AND WARRANTY

Cecotec shall be liable to the end user or consumer for any lack of conformity that exists at the time of delivery of the product under the terms, conditions, and deadlines established by the applicable regulations.

Repairs should be carried out by qualified personnel.

If at any moment you detect any problem with your product or have any doubts, do not hesitate to contact the official Cecotec Technical Support Service at +34 96 321 07 28.

COPYRIGHT

The intellectual property rights over the texts in this manual belong to CECOTEC INNOVACIONES, S.L. All rights reserved. The contents of this publication may not, in whole or in part, be reproduced, stored in a retrieval system, transmitted, or distributed by any means (electronic, mechanical, photocopying, recording, or similar) without the prior authorization of CECOTEC INNOVACIONES, S.L.

SIMPLIFIED DECLARATION OF CONFORMITY

Cecotec Innovaciones hereby declares that this window cleaning robot, model EU01_100140 – Conga Windroid 1090 Double Spray Connected, complies with Directive 2014/53/EU on radio equipment.

The full text of the EU Declaration of Conformity can be found on the following website:

<https://cecotec.es/es/information/declaration-of-conformity>

CONGA WINDROID 1090 DOUBLE SPRAY CONNECTED

www.cecotec.es

Cecotec Innovaciones S.L. Av. Reyes Católicos, 60 46910, Alfafar (Valencia)

AP01240822

FAQs


- **Q: How often should I clean the robot?**

A: It is recommended to clean the robot after each use to maintain its optimal performance.

- **Q: Can the robot be used on all types of windows?**

A: The robot is suitable for most types of windows, but it is essential to check the user manual for compatibility and any restrictions.

Documents / Resources

	<p>Cecotec RY72A240300M2 Window Cleaning Robot [pdf] Instruction Manual</p> <p>RY72A240300M2, RY72A240300M2 Window Cleaning Robot, RY72A240300M2, Window Cleaning Robot, Cleaning Robot, Robot</p>
-------------------------------------------------------------------------------------	--------------------------------------------------------------------------------------------------------------------------------------------------------------------------------------------------------------------

References

- [User Manual](#)

cecotec

cecotec, Cleaning Robot, Robot, RY72A240300M2, RY72A240300M2 Window Cleaning Robot, Window Cleaning Robot

Leave a comment

Your email address will not be published. Required fields are marked *

Comment *

Name

Email

Website

☐ Save my name, email, and website in this browser for the next time I comment.

Post Comment

Search:

e.g. whirlpool wrf535swhz

Search

[Manuals+](#) | [Upload](#) | [Deep Search](#) | [Privacy Policy](#) | [@manuals.plus](#) | [YouTube](#)

This website is an independent publication and is neither affiliated with nor endorsed by any of the trademark owners. The "Bluetooth®" word mark and logos are registered trademarks owned by Bluetooth SIG, Inc. The "Wi-Fi®" word mark and logos are registered trademarks owned by the Wi-Fi Alliance. Any use of these marks on this website does not imply any affiliation with or endorsement.