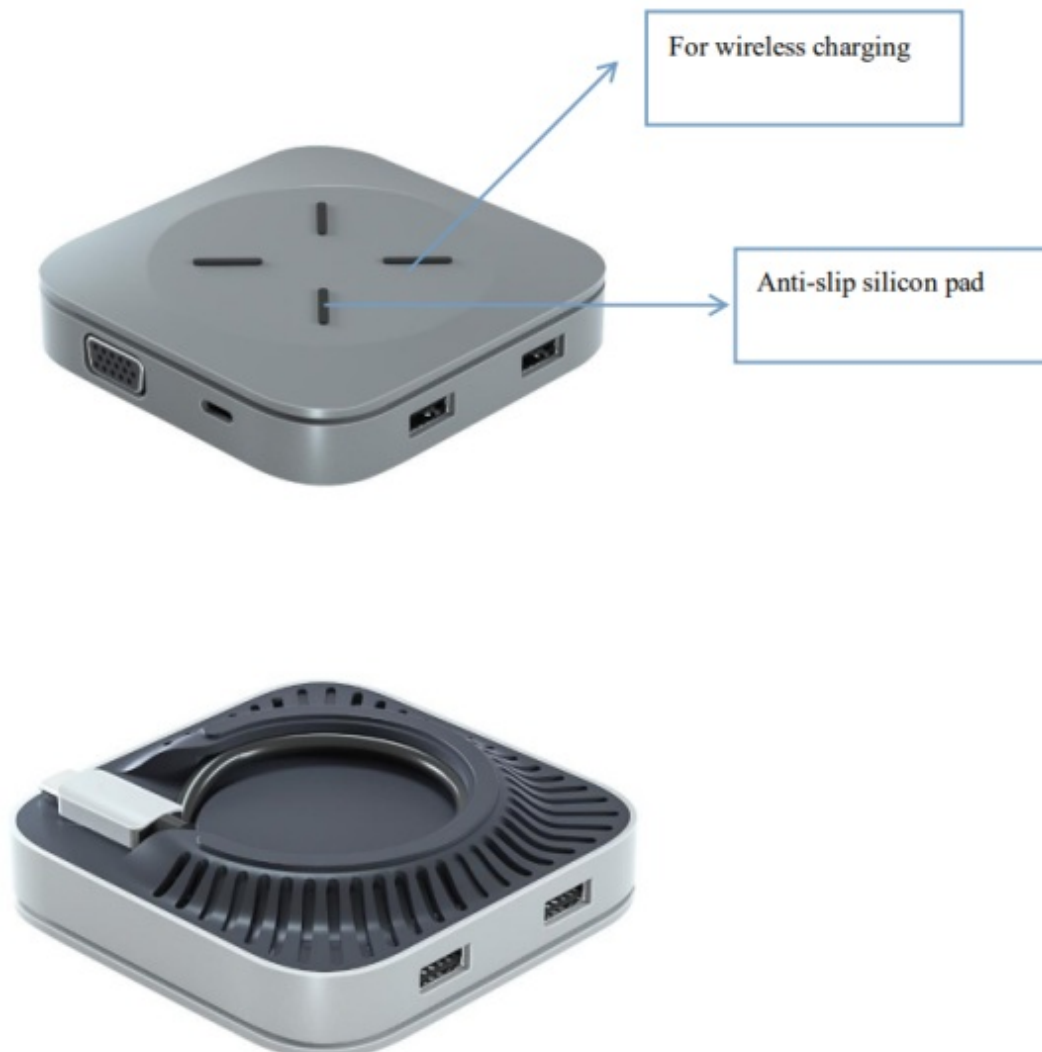




CE-LINK Type-C to HDMI-VGA/USB-Ax2-Type-C Data or PD Charging Adapter User Manual

[Home](#) » [CE-LINK](#) » CE-LINK Type-C to HDMI-VGA/USB-Ax2-Type-C Data or PD Charging Adapter User Manual

Type-C to
HDMI/VGA/USB-Ax2/Type-C
Data or PD Charging Adapter with Wireless Charging



User Manual

DEAR CUSTOMER

Thank you for purchasing this product. For optimum performance and safety, please read these instructions carefully before connecting, operating, or using this product. Please keep this manual for future reference.

Contents

- [1 INTRODUCTION](#)
- [2 FEATURES](#)
- [3 SPECIFICATIONS](#)
- [4 PACKAGE CONTENTS](#)
- [5 PACKAGE CONTENTS](#)
- [6 FCC WARNING](#)
- [7 IC WARNING](#)
- [8 CONNECTION DIAGRAM](#)
- [9 Documents / Resources](#)
- [10 Related Posts](#)

INTRODUCTION

This is a Type-C 5-in-1 Adapter with a wireless charging function. It integrates the function of a normal adapter and a wireless charging adapter into one, besides, its captive cable can be wrapped on the bottom, bringing customers a great user experience and convenience.

With the wireless charging function, users can charge their devices with max 10W power by putting devices on the surface which is designed with an anti-slip silicone pad. What's more, this product provides video, data, and PD charging ports to extend a single Type-C port of the host to multiple ports.

It can work on all Type-C and Thunderbolt 3 host that supports DP Alt mode. When working on Thunderbolt™ 3 host, this product transmits the DP signal.

FEATURES

Wireless Charging:

- Support wireless charging with max 10W power auto-adjust to 2.5W/5W/7.5W based on the requirement of the connected device and the capacity of the power source

When PD Adapter is connected, the PC is not connected

- Support max 10W wireless charging when PD Adapter power is over or equal to 27W, support max 5W wireless charging when PD The adapter power is less than 27W

When the PC is connected, PD Adapter is not connected

- Support max 5W wireless charging when host charging capacity is over or equal to 15W, support max 2.5W wireless charging when the host charging capacity is less than 15W

When both PC and PD Adapter is connected

- Support max 10W wireless charging when PD Adapter power is over or equal to 30W, support max 5W wireless charging when PD The adapter power is less than 30W
- Support over-temperature protection, when the surface temperature surpasses threshold temperature, the wireless charging function will stop working and will not return to work automatically until the temperature reduces within the safe temperature, so as to keep the charging device from being damaged due to high temperature
 - Support DP1.2 Alt mode, with bandwidth max 5.4Gbps per lane, 4 lanes 21.6Gbps
 - Support HDMI max 4K/30Hz VGA max 1920×200/60Hz
 - Support to output HDMI and VGA simultaneously under SST mode (output the same picture) with max 1080P/60Hz
 - Support HDCP2.2&1.4
 - Compact design
 - Type-C captive cable can be wrapped on the bottom of this design, offering great convenience for users
 - Support Fast Role Swap of PD 3.0, the connected device will not get disconnected while plugging in and out PD Adapter
 - Supports max 5Gbps data transmission for USB-A port, one USB-A supports max 1.5A downstream charging 2 USB-A share max 1.5A downstream charging
 - Support over-circuit protection, over-current protection
 - Type-C female supports max 100W PD Charging or 5Gbps data transmission
- Type-C female supports Dynamic Current Detection and Power Distribution which enables the distribution of power according to the actual consumption of the connected device, taking full advantage of the power supply and dynamically charging the host with more power.

Note: 3W is reserved for the product when no external device is connected, more power will be dynamically provided based on the required power of the connected devices.

SPECIFICATIONS

Connector		Parameter
Upstream	Type-C Male x1	Support DP1.2 Alt mode, 5.4Gbps per lane, 4 lanes 21.6Gbps
Downstream	HDMI X1	<ul style="list-style-type: none"> • max 4K/30Hz • 8/10/12 bit color depth • RGB4:4:4/YCbCr4:4:4/YCbCr4:2:2 • HDCP2.2&1.4
	VGA X1	<ul style="list-style-type: none"> • Max 1920X1200/60Hz
	Support to output HDMI VGA simultaneously under SST with max: 1080P/60Hz	

	USB-AX2	<ul style="list-style-type: none">• Max 5Gbps data transmission• One USB-A supports a max of 7.5W (5V/1.5A)• Another USB-A supports a max of 4.5W(5V/900mA)• 2 ports share a max of 7.5W(5V/1.5A)
	Type-C Female x 1	<ul style="list-style-type: none">• Support max 100W PD Charging• Support fast role swap of PD3.0• Max 5Gbps data transmission
Wireless Charging		Max 10W, auto-adjust to 7.5W/5W/2.5W base(on the requirement of the connected device within the capacity of power source
<div>Mechanical</div>		
Size (L-W-H)		90*90*24.5mm
Weight (Net)		148g
<div>Warranty</div>		
Limited Warranty		1 Year
<div>Environmental</div>		
Operating Temperature		or to +45t
Operating Humidity		10% to 90 % RH (no condensation)
Storage Temperature		-10'C to +70r
Storage Humidity		10% to 90 % RH (no condensation)
<div>Power Supply</div>		
USB-C PD Charging Port		100W(20V/5A)
<div>Regulatory Approvals</div>		
Certifications		FCC,CE

Accessory Adapter	
User Manual	English Version

PACKAGE CONTENTS

To achieve the most effective wireless charging effect, please keep the following tips:

1. It is suggested to keep the surrounding temperature to be around 25°C and keep ventilation;
2. Make sure that the wireless charging coil of the mobile phone is put rightly in the center of the wireless charging area;
3. It is suggested not to wireless charge mobile phones when this product is fully loaded or heavily loaded. (Note: when in full loaded or heavily loaded mode, this product will be in a higher temperature than in no loaded or light loaded state, than those mobile phones (iPhone 8Plus/Samsung Note 9, etc)which are seen sensitive to high-temperature sensitive may automatically reduce charging power, resulting in a slower charging speed)

PACKAGE CONTENTS

Before attempting to use this unit, please check the packaging and make sure the following items are contained in the shipping carton:

- Main unit x1
- User Manual x1

RF EXPOSURE STATEMENT

This equipment complies with the FCC RF radiation exposure limits set forth for an uncontrolled environment. This equipment should be installed and operated with a minimum distance of 20cm between the radiator and any part of your body.

This equipment meets the exemption from the Nerve Stimulation Exposure Limits in section 6.5 of SPR-002. It should be installed and operated with a minimum distance of 20cm between the radiator and any part of your body.

FCC WARNING

This device complies with Part 18 of the FCC Rules. Operation is subject to the following two conditions:

1. This device may not cause harmful interference, and
2. this device must accept any interference received, including interference that may cause undesired operation.

NOTE: Any changes or modifications to this unit not expressly approved by the party responsible for compliance could void the user's authority to operate the equipment.

IC WARNING

This device contains license-exempt transmitter(s) that comply with Innovation, Science, and Economic Development Canada's license-exempt RSS(s). Operation is subject to the following two conditions:

- 1. This device may not cause interference.
- 2. This device must accept any interference, including interference that may cause undesired operation of the device.

CONNECTION DIAGRAM



Documents / Resources

<div><div><div>Type-C to HDMI/VGA/USB-Ax2/Type-C Data or PD Charging Adapter with Wireless Charging</div><div>User Manual</div><div><div></div><div></div></div></div></div>	<p>CE-LINK Type-C to HDMI-VGA/USB-Ax2-Type-C Data or PD Charging Adapter [pdf] User Manual</p> <p>WL-UTC-C2UFHV, WLUTCC2UFHV, A4X-WL-UTC-C2UFHV, A4XWLUTCC2UFHV, Type-C to HDMI-VGA-USB-Ax2-Type-C Data or PD Charging Adapter</p>
--	--