



CDVI RX CUBE POWER Bluetooth Controlled Radio Receiver Instruction Manual

[Home](#) » [CDVI](#) » CDVI RX CUBE POWER Bluetooth Controlled Radio Receiver Instruction Manual 

CDVI RX CUBE POWER Bluetooth Controlled Radio Receiver Instruction Manual



Contents

- 1 Introduction
- 2 Technical Specifications
- 3 Dimensions|
- 4 Warnings
- 5 Wiring
- 6 Compatible transmitters
- 7 The App “RX CUBE”
 - 7.1 Password
- 8 Memory
 - 8.1 Memorizing transmitters
 - 8.2 Delete transmitters
- 9 Settings
- 10 Password
- 11 Info
- 12 Command
- 13 Disposal
- 14 Guarantee
- 15 Manufacture
- 16 CUSTOMER SUPPORT
- 17 Documents / Resources
 - 17.1 References
- 18 Related Posts

Introduction

RX CUBE POWER – Bluetooth controlled radio receiver

The receiver ERONE “Cube Power” is a super heterodyne radio receiver operating at 433,92 MHz in AM/ASK demodulation.

It is compatible with the full range of remote controls Erone that use the Keeloq® Hopping code security protocol. This receiver can be programmed only via Bluetooth using set-up and control that can be done only using the app : “RX Cube” on a Smartphone (iOS or Android).

Power supply 12-24 Vac/dc autodetect. High power output contacts The equipment is manufactured in compliance with the provisions of European Directive 2014/30/EU, 2014/35/EU, 2014/53/EU and the provisions of the standard EN 62368-1.

Part-name	F-code	Description
SEL2641R433-RCP	F1001000106	RECEIVER CUBE POWER 12/24V

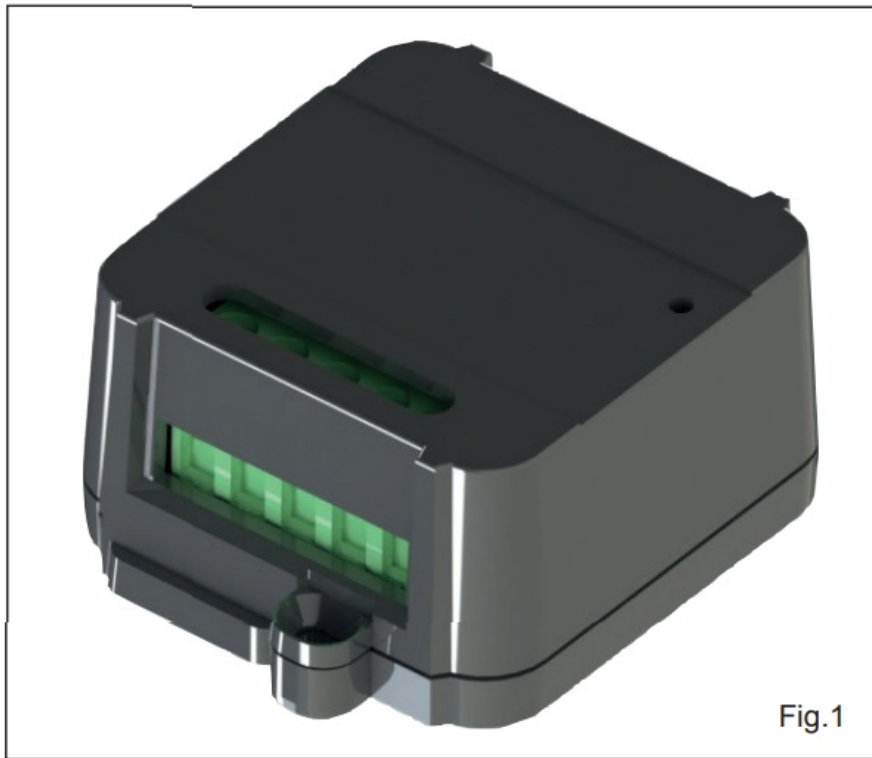


Fig.1

Technical Specifications

- **Receiver type:** Super heterodyne
- **Operating frequency:** 433,92 MHz – AM/ASK
- **Input sensitivity:** 118 dBm
- **Input load:** 50 Ohm
- **Power supply:** 12 – 24 Vac/dc (autodetect)
- **Consumption max:** 120 mA @12Vac
- **Peak consumption:** 500 mA at power up
- **Max switching power:** 10 A @ (30 Vdc)
- **Contact NO:** 6 A @ (30 Vdc) – Contact NC
- **Relay number:** 1
- **Operating modes:** Pulse / Latch / Timed
- **Release time (Timed mode):** from 1 sec. to 23h.59m:59s
- **Contacts:** C-NO-NC
- **Memory capacity:** 250 user codes
- **TX security code:** KeeLoq® Hopping code
- **Max code combination number:** 264
- **Operating temperature:** 20°/+65°C
- **Housing protection:** IP2X
- **Overall dimensions:** 44 x 58 x 25 mm
- **Communication w/mobile phone:** Bluetooth
- **Standard:** BLE 4.2
- **IO : Compatibility:** Android, iOS
- **Release Android:** 5.1 and next
- **Release iOS:** 10 and next



Bluetooth®

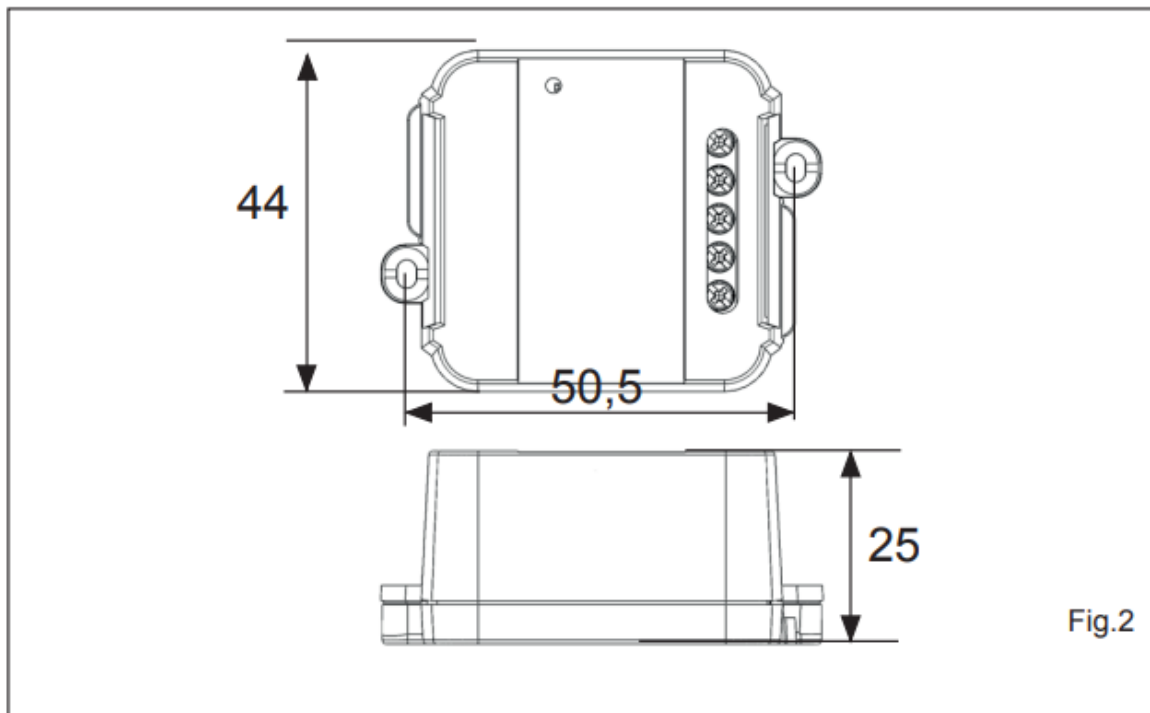
For iOS



For Android



Dimensions|

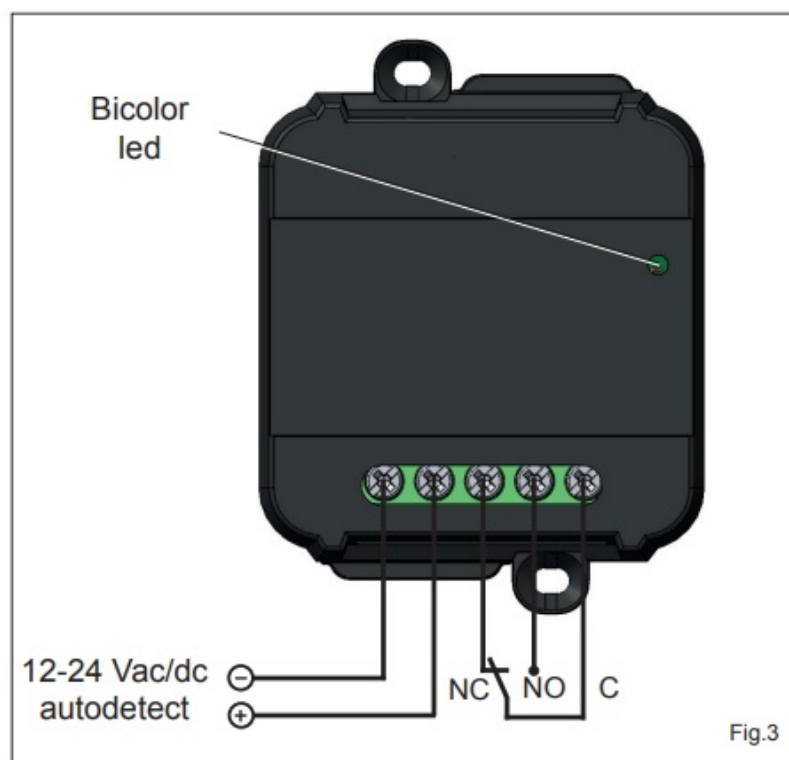


Warnings

The receiver allocation is very important for the best operation of the system. Place the receiver far from interference sources such as big magnetic fields or radio emissions. The distance between 2 receivers must be at least 1,5 m.

- The equipment must be powered from a device that provides a safety extra low voltage (SELV) type LPS (Low Power Source);
- There must be a suitable disconnecting device to the current drawn by the receiver (90 mA max @ 12Vdc).

Wiring



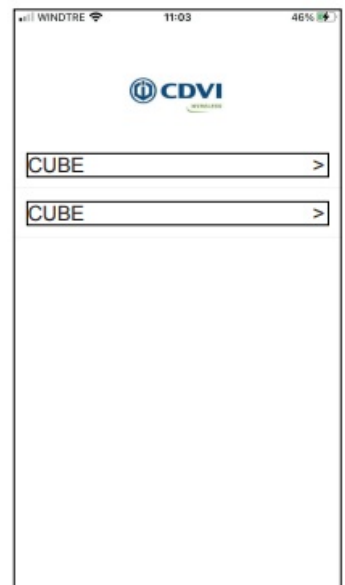
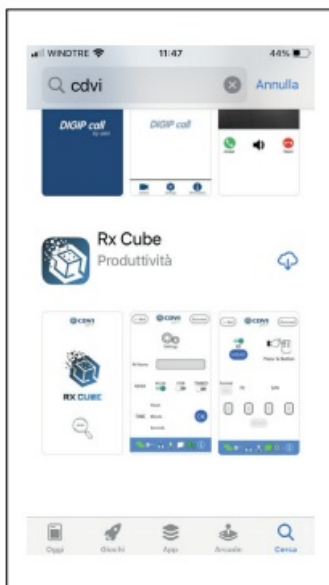
Compatible transmitters

- Erone – S2TR2641E2-E4-E2M
- Erone – SETR2641AM1, SETR2641AM2
- Erone – S3TR2641T1-T2-T4
- Erone – S4TR2641E1-E2-E4
- Erone – SETR2641TM
- Erone – S7TR2641E4
- Erone – FKT2641E1 – FKTHS2641E1- TTH2641E1
- Erone – S4TR2641E1-E2-E4
- CDVI – GALEOR

Color LED	Description
Green	Power ON NO Bluetooth communication
Green-Orange blinking	Bluetooth communication in progress
Orange	Relay excited

The App “RX CUBE”

The setup of the receiver can be done only through the App “Rx Cube”. So, first of all, download the App from “Apple Store” or “Google Play”. You can find it both typing the name of the App, “RX Cube”, or searching simply CDVI and then selecting Rx Cube. Once downloaded, authorize the App to use the Bluetooth communication. The App will ask even the GPS localization: please authorize it for the full operating of the Bluetooth BLE.



Start the App and press the scan button: the App begins scanning the surroundings searching for any Rx Cube is running in the range of the Bluetooth signal (10 — 30 m). Much depends on the fixing position of the receiver and whether the communication is direct or passes through walls. At the end of the scanning, the screen will show all the receivers Rx Cube found.

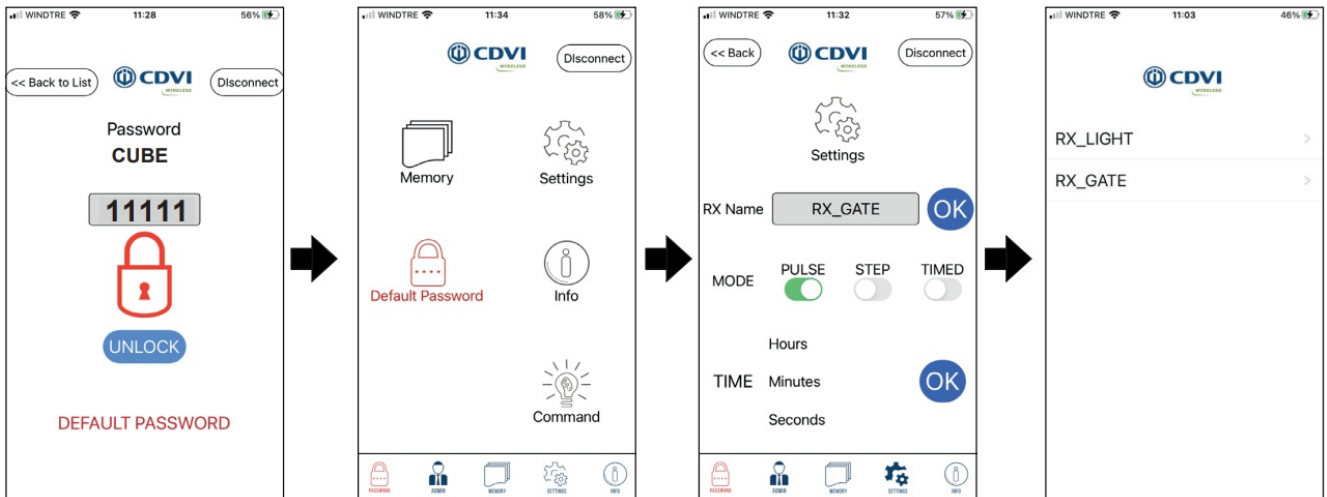


The receiver, by factory, comes with the name “CUBE”. If you power two or more receivers

simultaneously, the scanning will list many receivers all identical: it is advisable to power one device at time and possibly rename it individually. The name of the device can have up to 12 characters.

Changing the factory name of the receiver

- Type the default password 11111 (for administrator), click UNLOCK and enter in the main menu.
- Select Settings.
- Type the new name, give OK, then disconnect and make a new scanning..
- The App will display the new name of the receivers.



Password

The access to the receiver has 2 different security levels: ADMINISTRATOR and INSTALLER.

Factory password for **ADMINISTRATOR** = 11111.

Factory password for **INSTALLER** = 00000.

Both can make all the settings. Only the Administrator can change the passwords, the Installer is not authorized

Memory

Enter the submenu Memory to manage the receiver memory : add or delete transmitters individually, add or delete a batch of transmitters, delete all the transmitters, restore the memory to factory settings.



Memorizing transmitters

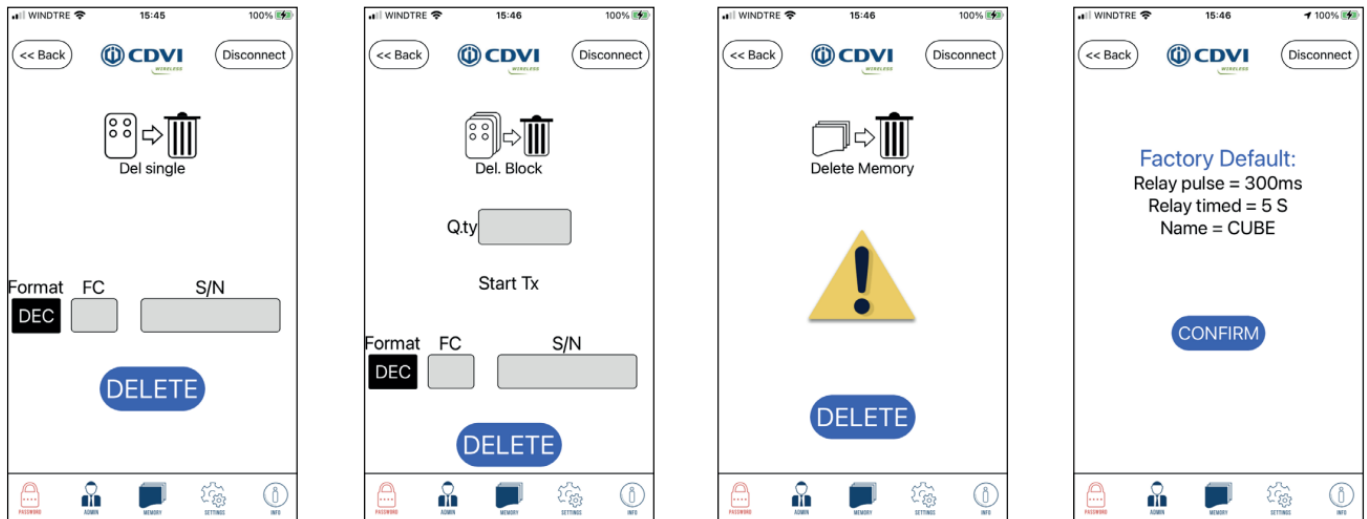
Individually (fig. 3)

The memorization can be done directly, pressing the button of the transmitter to store or specifying its S/N and Facility code. In this case you must specify the button/s authorized (you can store up to 4 buttons).

In one block (fig. 4)

Specify the number of transmitters of the block, the detail of the first transmitter (S/N and Facility code) and the buttons to enable (A, B, C or D).

NOTE: The button Format allows to display the numbers in DECIMAL or HEXADECIMAL format.



Delete transmitters

Individually

Enter the S/N and Facility code of the transmitter to delete and press DELETE

In one block

Specify the number of transmitters of the block, enter S/N and Facility code of the first TX and press DELETE

Delete memory

Press DELETE to delete all the transmitters memorized

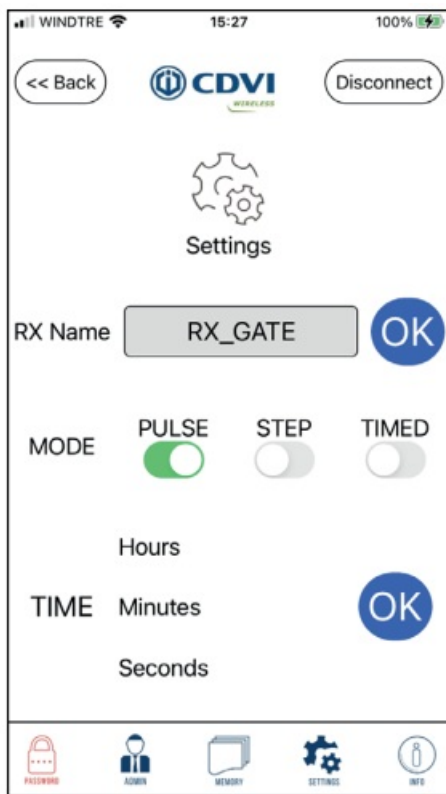
Factory Default

This option allows to delete all the transmitters and reset the settings to the factory defaults: pulse mode, time of the timed mode (5 sec.), name of the receiver (CUBE).

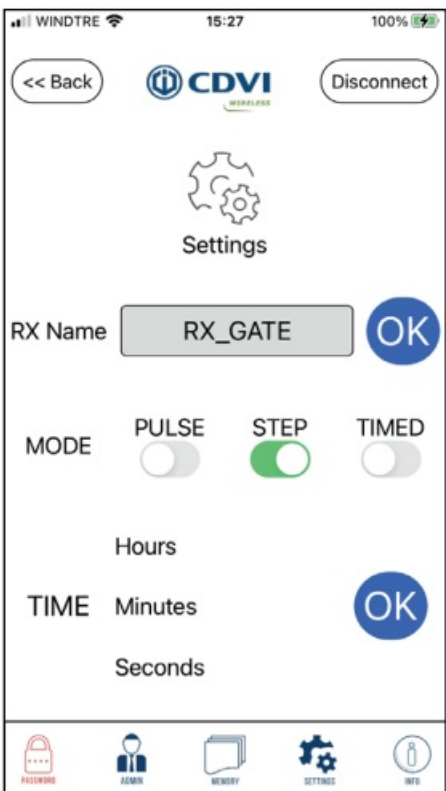
Settings

Clicking on Settings it is possible to set the the relay operating mode: PULSE, STEP, TIMED. In pulse mode the relay remains activated for the entire duration of the radio transmission with a min. time of 300 mS. For the Timed mode it is possible to set the release time of the relay from 1 sec. to 23h : 59m : 59s.

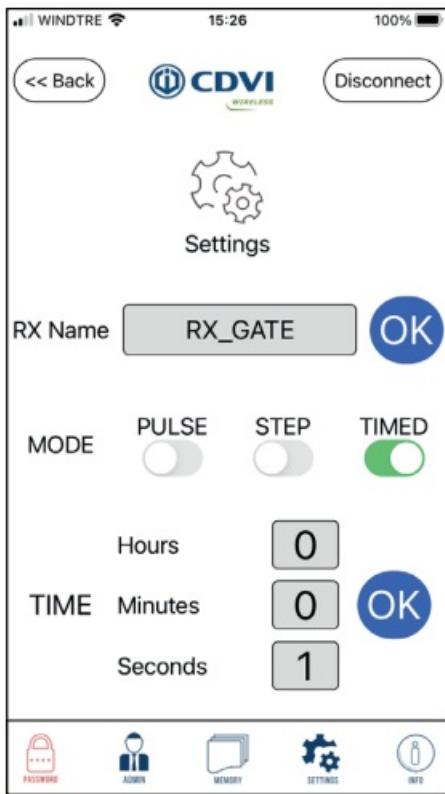
Pulse mode



Step mode

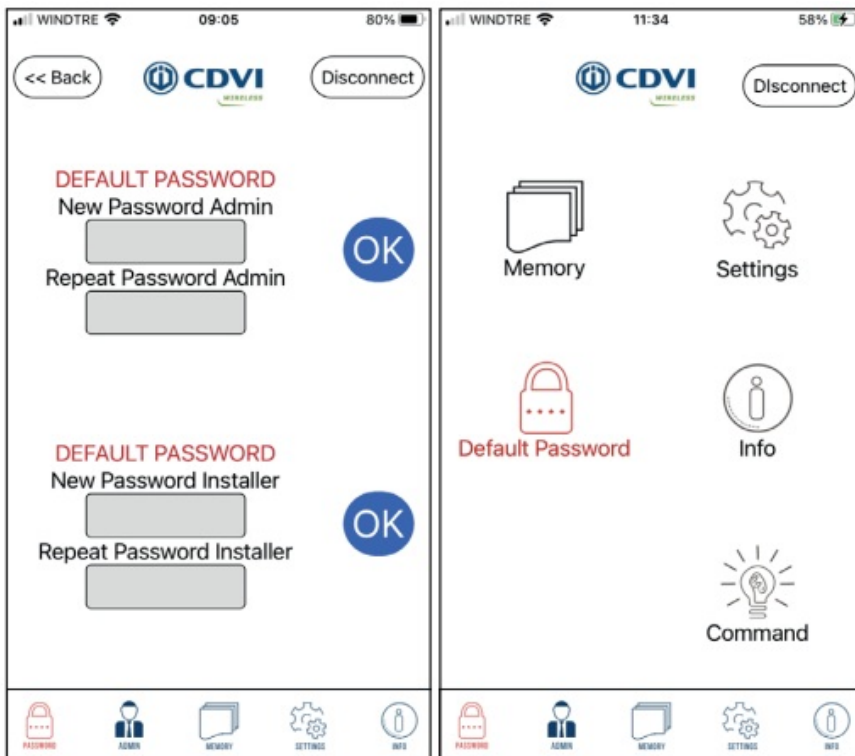


Timed mode



Password

The password can be changed selecting the icon Password on the mail screen. Only the ADMINISTRATOR is authorized to change the password.



The password set-in-factory are:

- **Administrator:** 11111
- **Installer:** 00000

The password is composed by max 5 numeric digits (min 1)

A red message appears if the password is still the factory password.

NOTE: The icon PASSWORD, in the main menu, is RED when at least one of the two password is still at the factory value

Info

The icon INFO of the main screen allows to display the features of the receiver: number of TX memorized, revision of the Firmware and release of the App.

It is possible to list the transmitters memorized: press List...> The screen displays only 5-6 lines of the list.

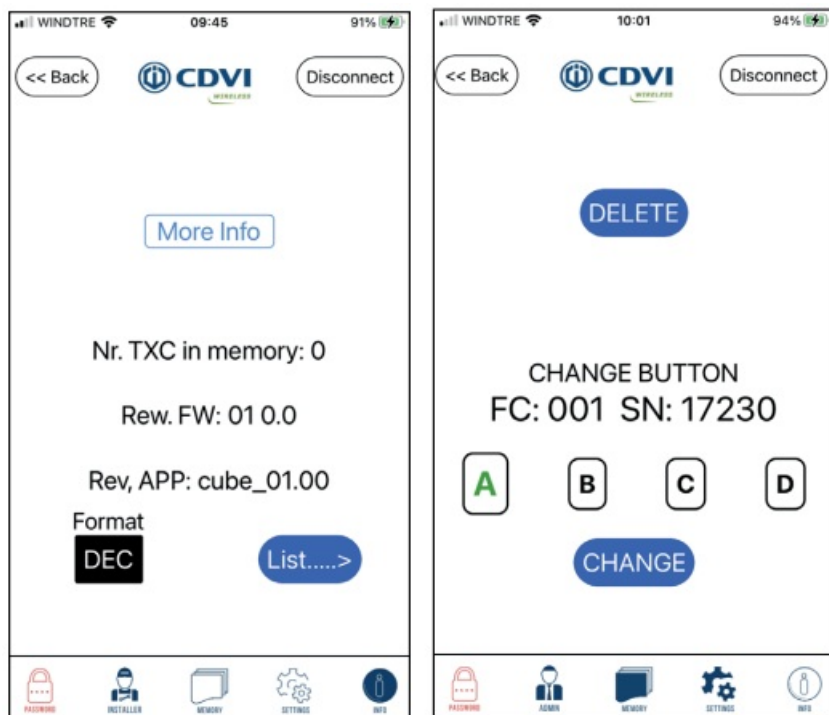
Scroll the list taping the center of the screen.

The Serial number of the transmitters can be displayed in Decimal or Hexadecimal format.

If you select one line, you display the information of a specific transmitter. For each transmitter it is displayed the FC + S/N and the button active (A, B, C or D).

For changing this setting, press one of the 4 buttons and push CHANGE.

From this screen is also possible to DELETE the TX from the memory.

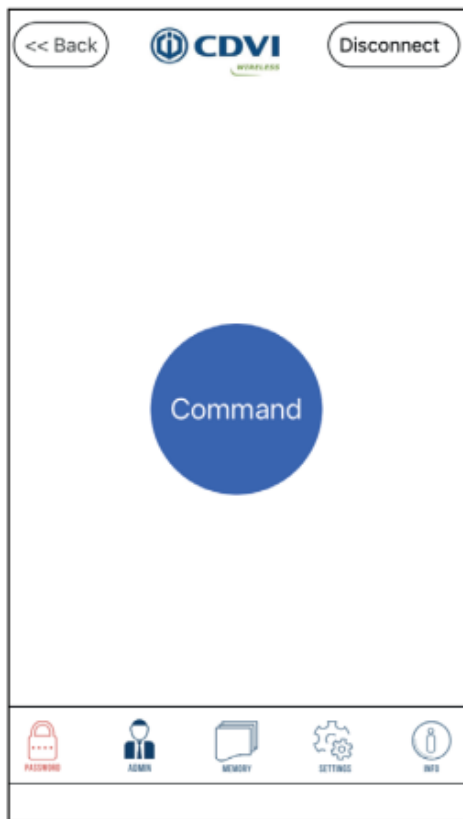


Command

It is possible to activate directly the relay from the App.

Enter the icon "Command" and press the button.

The symbol becomes RED confirming of the relay activation.



Disposal



— This product is made up of various types of material, therefore, as indicated by the symbol in the figure, the product must not be disposed of in with the household waste.
Dispose in accordance with local current regulations.

Guarantee

The warranty period for this product is 60 months, beginning from the manufacturer date.
During this period, if the product does not work correctly, due to a defective component, the product will be repaired or substituted at our discretion.
The guarantee does not cover the plastic container integrity. After-sale service is supplied at the factory.

Manufacture

Manufactured by: CDVI Wireless SPA – Via Piave, 23
31020 S.Pietro di Feletto (TV) – Italy
Tel: +39-0438-450960 –
Fax: +39-0438-455628



CUSTOMER SUPPORT

CE CDVI AMERICAS
[CANADA – USA – LATIN AMERICA]

www.cdvi.ca

Manufactured by : CDVI Wireless SPA
Via Piave, 23 – 31020 S.Pietro di Feletto (TV) – Italy

tel: +39-0438-450860 –

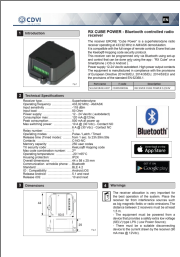
mail: info@erone.com

web: www.erone.com

www.erone.com



Documents / Resources

	<p>CDVI RX CUBE POWER Bluetooth Controlled Radio Receiver [pdf] Instruction Manual RX CUBE POWER Bluetooth Controlled Radio Receiver, RX CUBE POWER, RX CUBE Bluetooth Controlled Radio Receiver, POWER Bluetooth Controlled Radio Receiver, Bluetooth Controlled Radio Receiver, Bluetooth Radio Receiver, Radio Receiver, Receiver</p>
--	--

References

- [CDVI Group](#)
- [CDVI Americas – access control system manufacturer](#)
- [CDVI | Security to Access](#)
- [Access Control Solutions Manufacturer - CDVI UK](#)
- [CDVI | Security to Access](#)
- [CDVI Polska - Systemy Kontroli Dostępu, Elektrozaczepek, Czytniki | Security To Access](#)
- [Controllo Accessi e Sistemi di Sicurezza | CDVI Italia](#)
- [cdvi.ma](#)
- [CDVI | Security to Access](#)
- [Fabrikant van toegangscontrole oplossingen - CDVI Benelux](#)
- [CDVI Ibérica | Security to access](#)
- [Erone |](#)