



# CDVI KPROG USB Card Enrollment Device User Guide

[Home](#) » [CDVI](#) » CDVI KPROG USB Card Enrollment Device User Guide 



USB Card Enrollment Device  
**QUICK START GUIDE**

## Contents

- [1 PREREQUISITES AND COMPATIBILITY](#)
- [2 WEB CONNECTION](#)
- [3 SOFTWARE CONNECTION](#)
- [4 Documents / Resources](#)
- [5 Related Posts](#)

## PREREQUISITES AND COMPATIBILITY

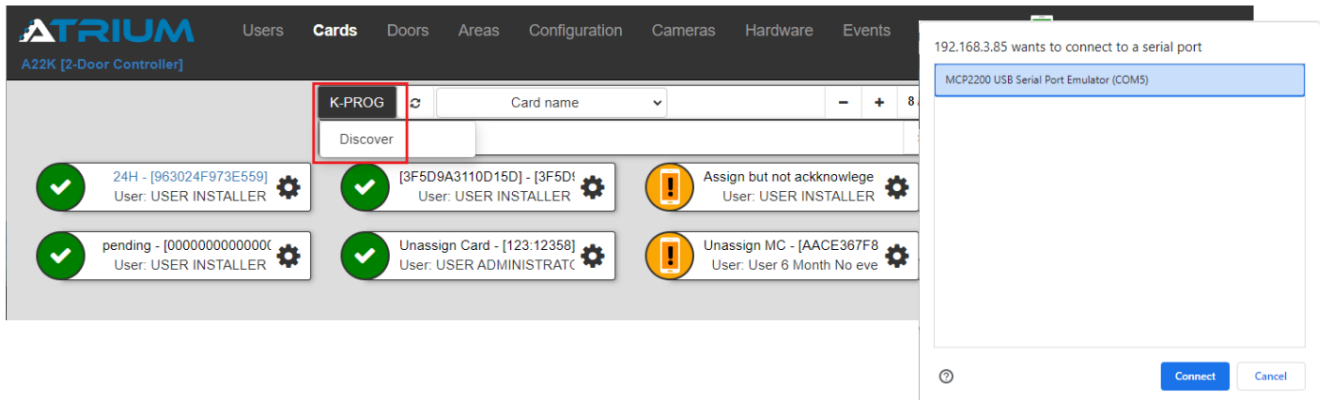
- Requires ATRIUM software version 7.0.2.314 (or higher) and A22K controller firmware version 3.0.2.0084 (or higher).
- Reads MIFARE® Classic and DESFire® EV2/EV3 credentials.
- Supported browsers: Google Chrome, Microsoft Edge and Apple Opera (Firefox not supported).
- Using KPROG with a browser requires a secure HTTPS connection. You must install the “CDVI Root Certificate” on the browser you use to manage the ATRIUM system. Visit your local CDVI website to download the Automatic HTTPS installer tool or the “CDVI Root Certificate” instruction.

## WEB CONNECTION

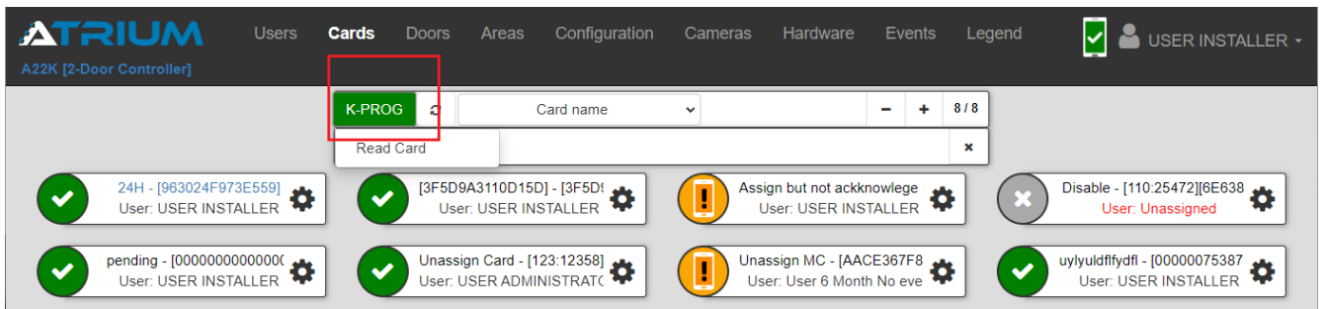
1. Connect the KPROG to a USB port of your computer.

Make sure the computer is connected to the same network as the ATRIUM system.

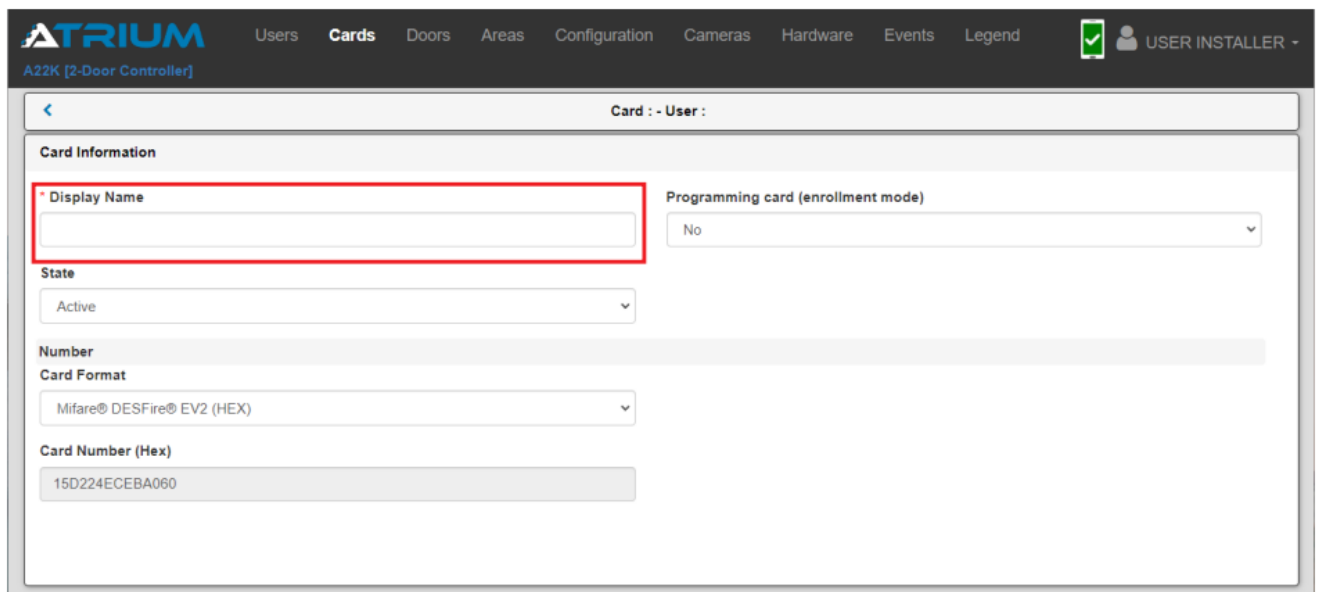
2. Log into the ATRIUM web page then select the “Cards” menu.
3. Click the “KPROG” button then select “Discover”.
4. A popup window will be displayed. Select “USB Serial Port Emulator” then click “Connect”.



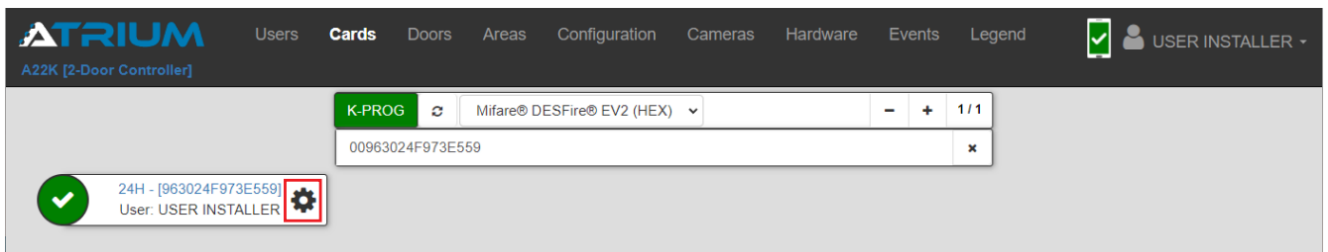
5. The KPROG button turns green to indicate a successful connection has been established. Place a compatible credential on the KPROG. Click the “KPROG” button, then select “Read Card”. The KPROG LED will change to green.



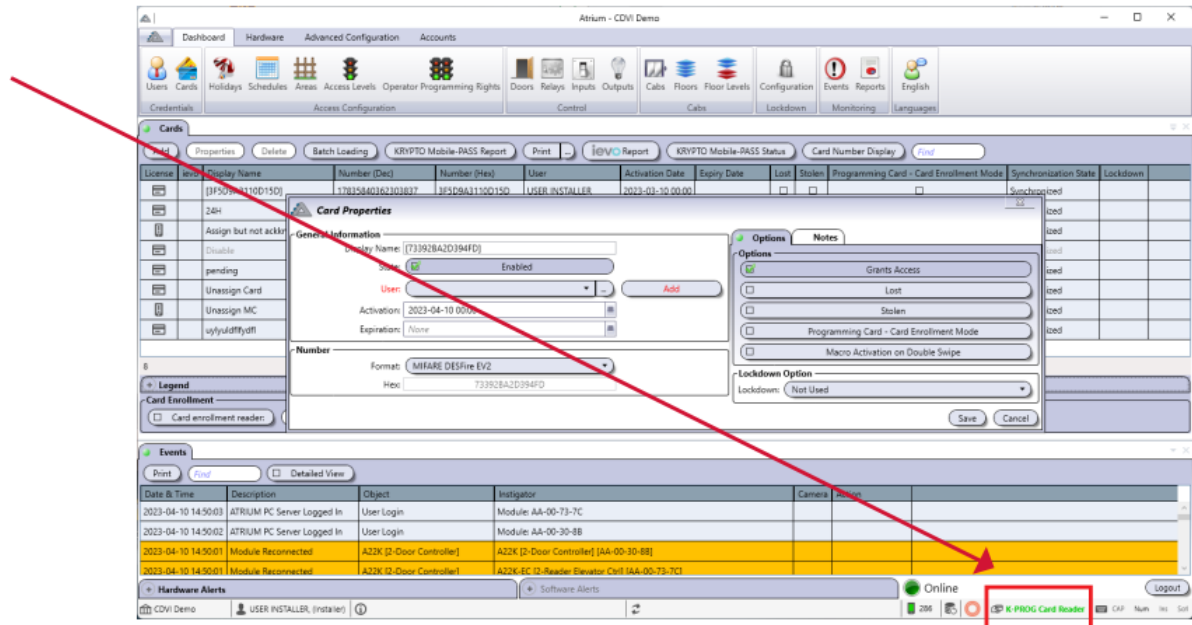
6. A new card will display the “Card Information” window. The format and number is automatically detected, simply add a “Display Name” then click “Save”. Assign the card to an existing user or create a new one and finally give the user an access level.



7. If the card scanned by the KPROG already exists in the system database, it will be displayed in the window. Click the “Settings” gear icon to edit the card.



## SOFTWARE CONNECTION

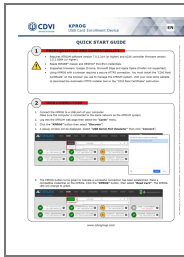


1. The computer must be connected to the same network as the ATRIUM system. Connect the KPROG to a USB port on your computer.
2. Log into the ATRIUM Software.
3. The KPROG is automatically detected by the ATRIUM software. It will be displayed in green at the bottom-right of the status bar.
4. Place a credential on the KPROG, the LED color will change to green and the "Card Properties" window will open. The card format and card number will be saved in their respective fields. The card serial number will appear as the display name.
5. Assign the card to a new or current user of the ATRIUM system. If the card scanned by the KPROG already exists in the system, it will be displayed in the window.



[www.cdvigroup.com](http://www.cdvigroup.com)

## Documents / Resources



[CDVI KPROG USB Card Enrollment Device](#) [pdf] User Guide

KPROG, KPROG USB Card Enrollment Device, USB Card Enrollment Device, Enrollment Device, Device

**Manuals+,**