

Cdtech ELRT8723DUT Bluetooth 4.2 Module User Guide

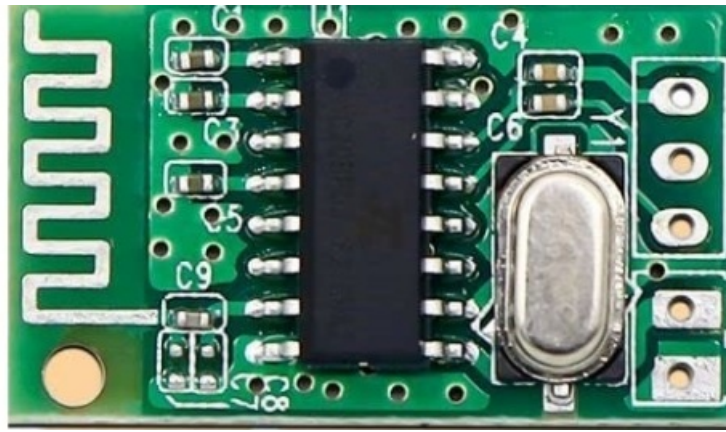
[Home](#) » [Cdtech](#) » Cdtech ELRT8723DUT Bluetooth 4.2 Module User Guide 

Contents

- [1 Cdtech ELRT8723DUT Bluetooth 4.2 Module](#)
- [2 Software](#)
- [3 CHINA DRAGON TECHNOLOGY LIMITED](#)
- [4 Reversion History](#)
- [5 Overview](#)
- [6 Features](#)
- [7 System Block Diagram](#)
- [8 General Specification](#)
- [9 DC Characteristics](#)
- [10 Electrical Characteristics](#)
- [11 Supplier](#)
- [12 Module photo](#)
- [13 Module size](#)
- [14 Pin Description](#)
- [15 Package Size](#)
- [16 Recommended Reflow Profile](#)
- [17 Package](#)
- [18 IC statement](#)
- [19 Documents / Resources](#)
 - [19.1 References](#)
- [20 Related Posts](#)



Cdtech ELRT8723DUT Bluetooth 4.2 Module



Specifications

- Model: EL.RTL8723DU-WFT
- Product Name: WLAN 11b/g/n 1T1R + Bluetooth 4.2 module
- Major Chipset: RTL8723DU
- Standard: IEEE 802.11b/g/n
- Modulation Method: BPSK/ QPSK/ 16-QAM/64-QAM
- Frequency Band: 2.4GHz ISM Band
- Interface: USB2.0
- Storage Temperature: N/A
- Humidity: N/A
- Dimension: N/A

Features

- IEEE 802.11b/g/n compatible WLAN802.11b/g/n 1T1R WLAN and Bluetooth single chip
- Complete 802.11n solution for 2.4GHz band
- 72.2Mbps receive PHY rate and 72.2Mbps transmit PHY rate using 20M bandwidth
- 150Mbps receive PHY rate and 150Mbps transmit PHY rate using 40M bandwidth
- Security support for WPA/WPA2. Open, shared key, and pair-wise key authentication services
- Compatible with Bluetooth v2.1 and v3.0 Systems
- Supports Bluetooth 4.2
- Supports multiple Low Energy states
- Support 3D Glasses application

EL.RTL8723DU-WFT

IEEE 802.11b/g/n USB2.0 1T1R + Bluetooth 4.2module

Software

Customer	Approve	Date

Design	Check	Approve	Version	Date
			V1.1	2023.11.23

CHINA DRAGON TECHNOLOGY LIMITED

(86 755) 81449967

E-mail: Info@cdtech.cn

[Http://www.cdtech.cn](http://www.cdtech.cn)

Reversion History

Version	Date	Modification
1.0	2023.08.11	Draft
1.1	2023.11.23	

Overview

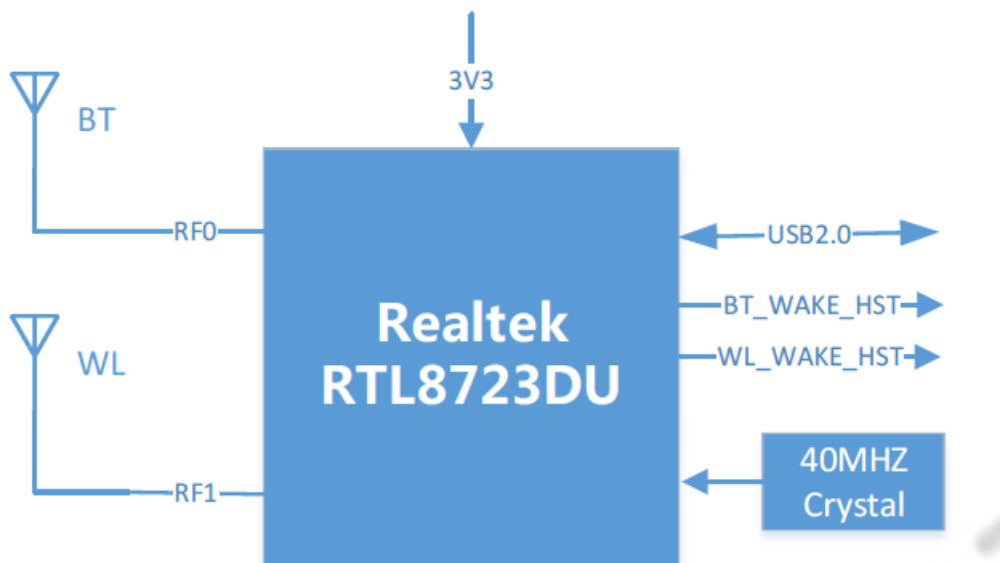
The EL.RTL8723DU-WFT is a highly integrated single-chip 802.11n Wireless LAN (WLAN) USB 2.0 Multi-Function network interface controller with integrated Bluetooth 2.1/3.0/4.2 controller. It combines a WLAN MAC, a 1T1R capable WLAN baseband, and RF in a single chip. The EL.RTL8723DU-WFT provides a complete solution for a high-performance integrated wireless LAN and Bluetooth device. The integration provides good coordination and with sophisticated dynamic power control and packet traffic arbitration to achieve good coexistence performance between 802.11 and Bluetooth.

Features

- IEEE 802.11b/g/n compatible WLAN 802.11b/g/n 1T1R WLAN and Bluetooth single chip
- Complete 802.11n solution for 2.4GHz band
- 72.2Mbps receive PHY rate and 72.2Mbps transmit PHY rate using 20M bandwidth
- 150Mbps receive PHY rate and 150Mbps transmit PHY rate using 40M bandwidth
- Security support for WPA/WPA2. Open, shared key, and pair-wise key authentication services
- Compatible with Bluetooth v2.1 and v3.0 Systems
- Supports Bluetooth 4.2

- Supports multiple Low Energy states
- Support 3D Glasses application

System Block Diagram



General Specification

Model	EL.RTL8723DU-WFT
Product Name	WLAN 11b/g/n 1T1R + Bluetooth 4.2 module
Major Chipset	RTL8723DU
Standard	802.11b/g/n
Modulation Method	BPSK/ QPSK/ 16-QAM/64-QAM
Frequency Band	2.4GHz ISM Band
WiFi/BT Interface	USB2.0
Operating Temperature	20°C ~ 65°C
Storage Temperature	-40°C ~ 85°C
Humidity	5% to 90% maximum
Dimension	30x25x6.0 (LxWxH) ±0.2mm

DC Characteristics

symbol	Parameter	Minimum	Typical	Maximum	Units
VCC	3.3V supply voltage	3.0	3.3	3.6	V
VCC	3.3V rating current	—	—	1000	mA
VOH	output high Voltage	2.97	—	3.3	V
VOL	output low Voltage	0	—	0.33	V

Electrical Characteristics

WiFi Section

Feature	Description
WLAN Standard	IEEE 802.11b/g/n WiFi compliant
Frequency Range	2.400 GHz ~ 2.4835 GHz (2.4 GHz ISM Band)
Number of Channels	2.4GHz Ch1 ~ Ch11
Modulation	802.11b : DQPSK, DBPSK, CCK 802.11 g/n : OFDM /64-QAM,16-QAM, QPSK, BPSK
Receive Sensitivity (11b,20MHz) @8% PER	– 1Mbps PER @ -91 dBm, typical
	– 2Mbps PER @ -89 dBm, typical
	– 5.5Mbps PER @ -87 dBm, typical
	– 11Mbps PER @ -85 dBm, typical
Sensitivity (11g,20MHz) @10% PER	– 6Mbps PER @ -90 dBm, typical
	– 9Mbps PER @ -89 dBm, typical
	– 12Mbps PER @ -88 dBm, typical
	– 18Mbps PER @ -85 dBm, typical
	– 24Mbps PER @ -82 dBm, typical
	– 36Mbps PER @ -79 dBm, typical
	– 48Mbps PER @ -74 dBm, typical
	– 54Mbps PER @ -72 dBm, typical
	– MCS=0 PER @ -90 dBm, typical
	– MCS=1 PER @ -87 dBm, typical
	– MCS=2 PER @ -85 dBm, typical
	– MCS=3 PER @ -81 dBm, typical
	– MCS=4 PER @ -78 dBm, typical
	– MCS=5 PER @ -73 dBm, typical

Receive Sensitivity (11n,20MHz) @10% PER	– MCS=6 PER @ -72 dBm, typical
	– MCS=7 PER @ -70 dBm, typical
Receive Sensitivity (11n,40MHz) @10% PER	– MCS=0 PER @ -87 dBm, typical
	– MCS=1 PER @ -84 dBm, typical
	– MCS=2 PER @ -82 dBm, typical
	– MCS=3 PER @ -79 dBm, typical
	– MCS=4 PER @ -75 dBm, typical
	– MCS=5 PER @ -71 dBm, typical
	– MCS=6 PER @ -69 dBm, typical

	– MCS=7 PER @ -68 dBm, typical
Maximum Input Level	802.11b : -10 dBm
	802.11g/n : -20 dBm

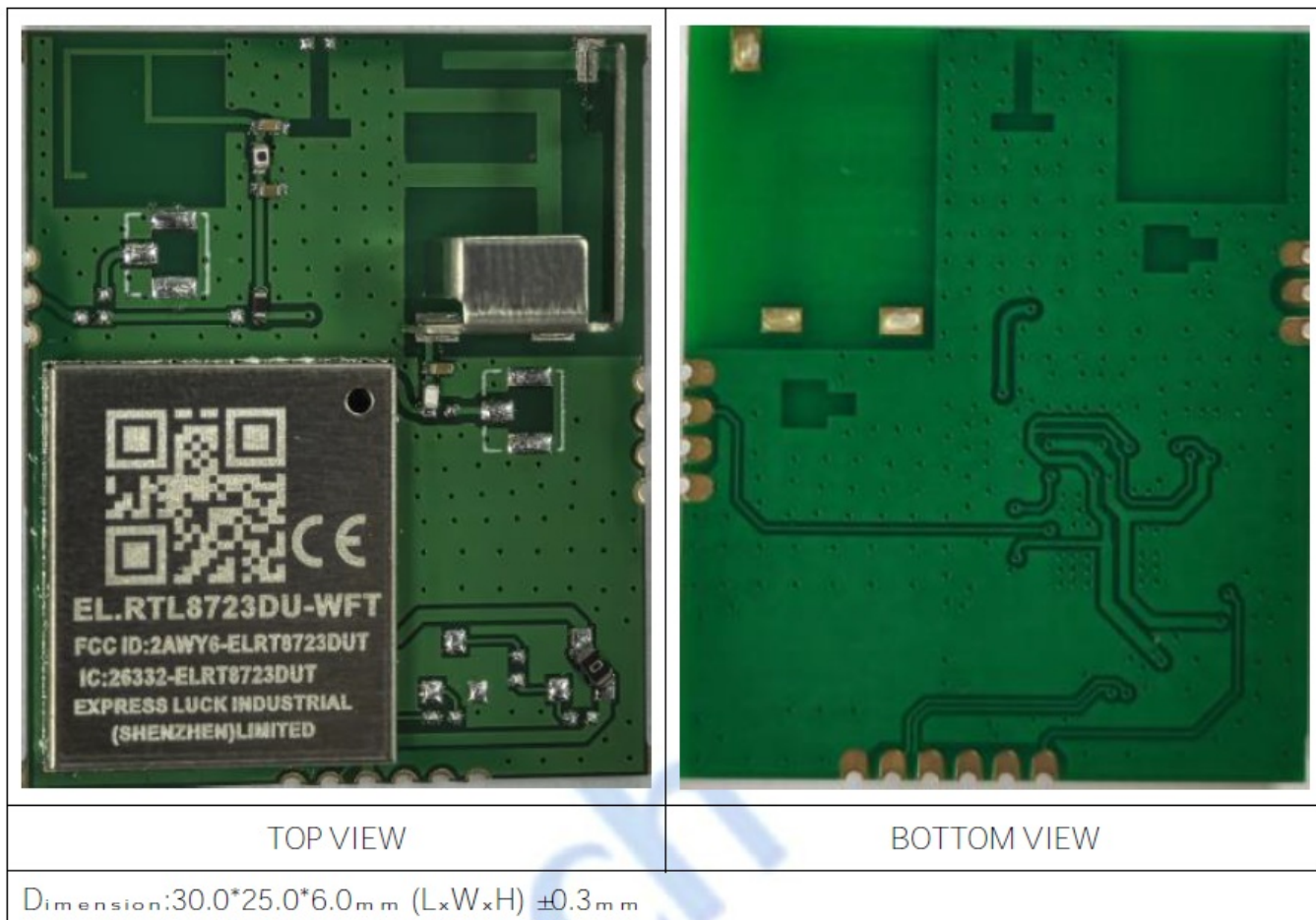
Bluetooth Section

Feature	Description		
General Specification			
Bluetooth Standard	BT2.1/3.0/4.2		
Host Interface	USB2.0		
Frequency Band	2402 MHz ~ 2480 MHz		
Modulation	FHSS, GFSK, DPSK, DQPSK		
RF Specification			
Sensitivity @ BER=0.1% for GFSK (1Mbps)		-86 dBm	
Sensitivity @ BER=0.01% for π/4-DQPSK (2Mbps)		-86 dBm	
Sensitivity @ BER=0.01% for 8DPSK (3Mbps)		-80 dBm	
Maximum Input Level	GFSK (1Mbps):-20dBm		
	π/4-DQPSK (2Mbps) :-20dBm		
	8DPSK (3Mbps) :-20dBm		

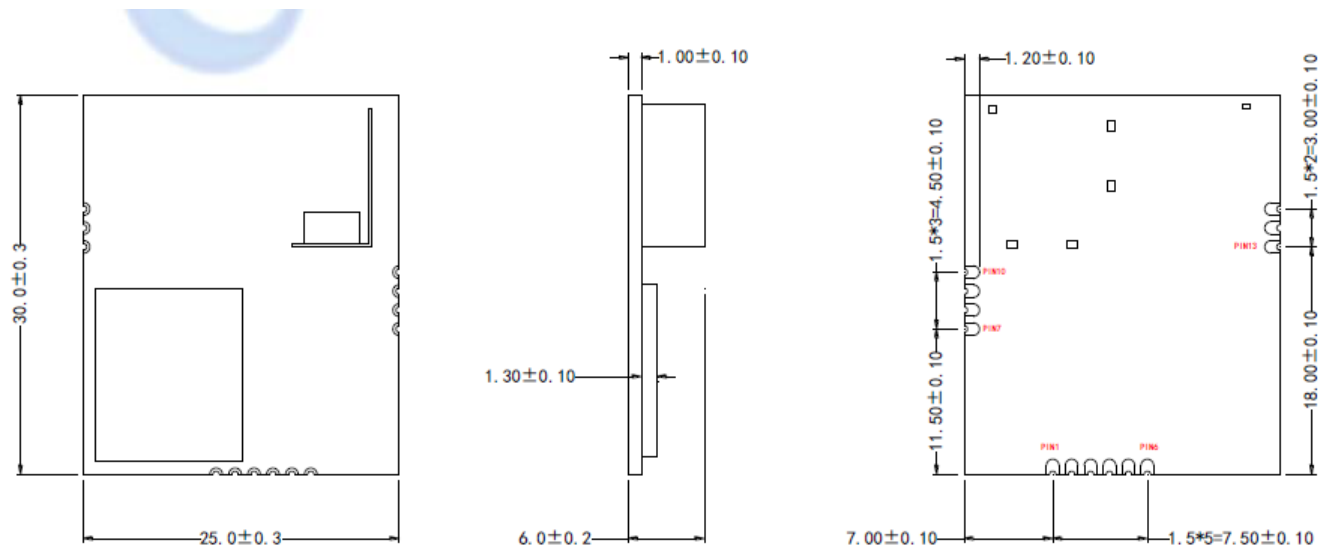
Supplier

Supplier list	
Name of Material	Supplier brand
Main chip	RTL
Crystal	FK/TKD/TXC/JWT
PCB	Bomin/Kexiang/E-Tech/Yigetong
Inductor	Sunlord/CHILISIN/SAMWHA/TDK
Capacitance	SAMSUNG /EYANG/ WALSIN/ muRata/TAIYO/ Darfon
Resistor	UniOhm /YAGEO/ WALSIN

Module photo



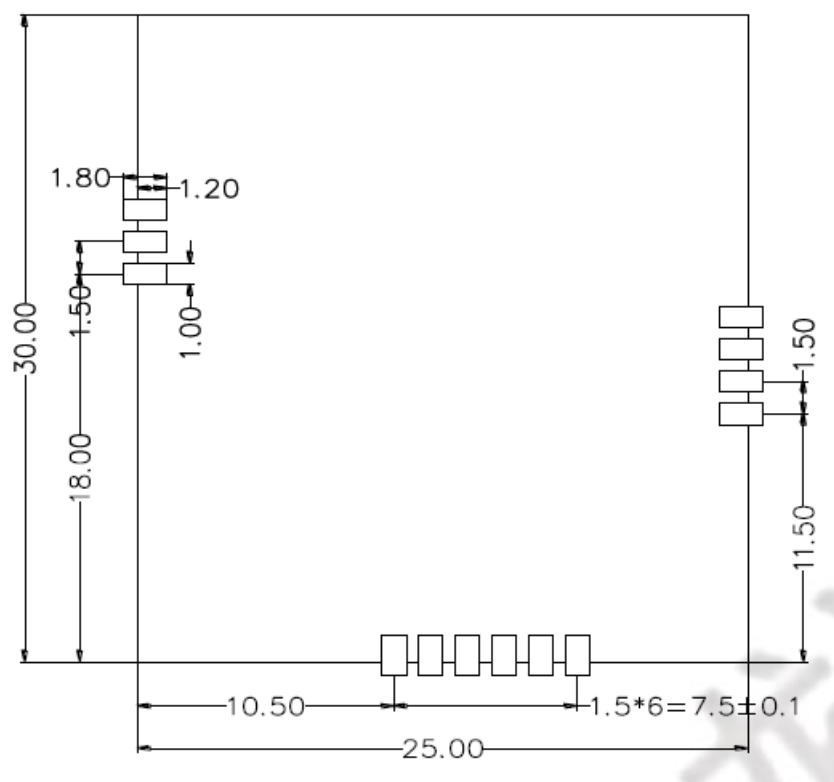
Module size



Pin Description

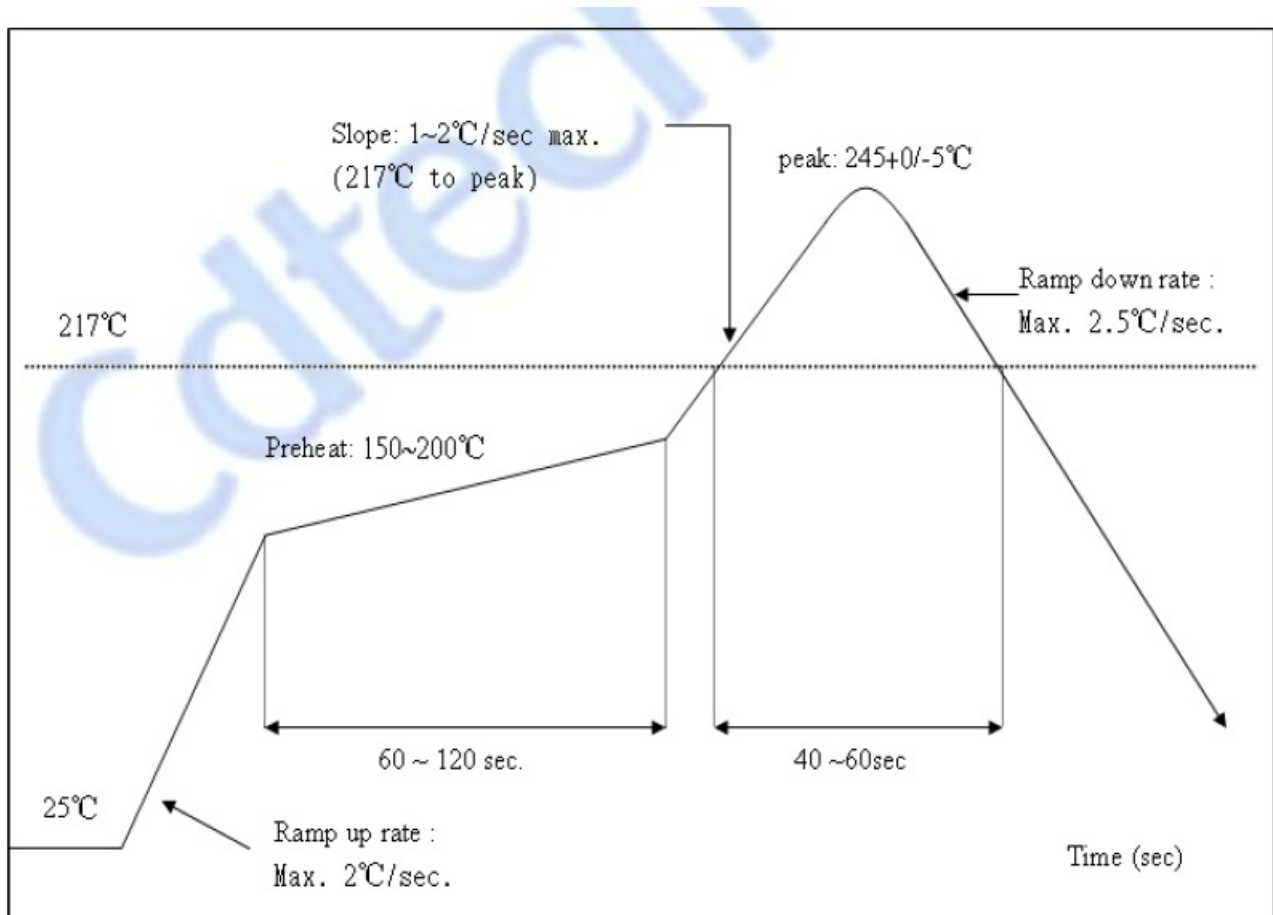
NO.	Symbol	Description
1	GND	Ground connections
2	DP	USB positive differential data lines
3	DM	USB negative differential data lines
4	VCC	Power supply 3.3V
5	NC	
6	WOW	Wake up system via wifi,low active
7	GND	Ground connections
8	NC	
9	BT_WAKE_HOST	Wake up system via BT,low active
10	GND	Ground connections
11	GND	Ground connections
12	BT_RF	Bluetooth RF output
13	GND	Ground connections

Package Size

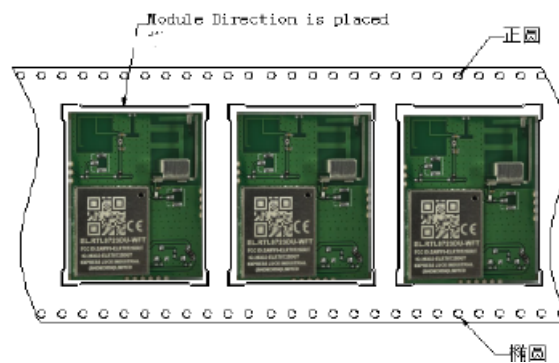


Recommended Reflow Profile

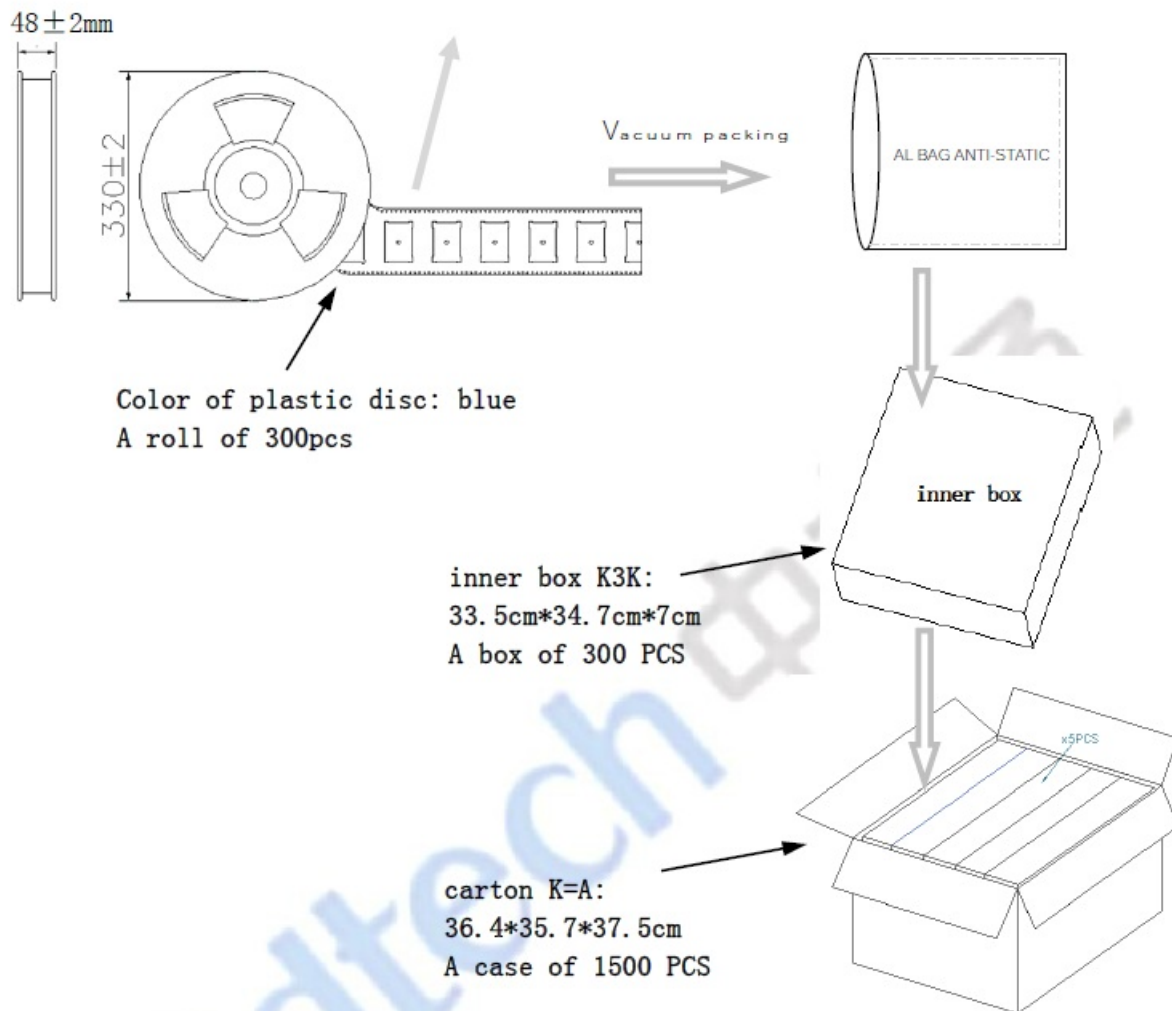
Referred IPC/JEDEC standard.
Peak Temperature : <250°C



Package



WiFi Module
EL.RTL8723DU-WFT



ESD CAUTION

The EL.RTL8723DU-WFT is ESD (electrostatic discharge) sensitive device and may be damaged with ESD or spike voltage. Although EL.RTL8723DU-WFT has built-in ESD protection circuitry, please handle with care to avoid the permanent malfunction or performance degradation.

FCC WARNING

FCC Caution: Any changes or modifications not expressly approved by the party responsible for compliance could void the user's authority to operate this equipment.
This device complies with Part 15 of the FCC Rules.

Operation is subject to the following two conditions

1. This device may not cause harmful interference, and
2. this device must accept any interference received, including interference that may cause undesired operation.

This device and its antenna(s) must not be co-located or operating in conjunction with any other antenna or transmitter.

15.105 Information to the user.

(b) For a Class B digital device or peripheral, the instructions furnished the user shall include the following or similar statement, placed in a prominent

location in the text of the manual

Note: This equipment has been tested and found to comply with the limits for a Class B digital device, pursuant to part 15 of the FCC Rules.

These limits are designed to provide reasonable protection against harmful interference in a residential installation. This equipment generates, uses and can radiate radio frequency energy and, if not installed and used in accordance with the instructions, may cause harmful interference to radio communications. However, there is no guarantee that interference will not occur in a particular installation. If this equipment does cause harmful interference to radio or television reception, which can be determined by turning the equipment off and on, the user is encouraged to try to correct the interference by one or more of the following measures:

- Reorient or relocate the receiving antenna.
- Increase the separation between the equipment and receiver.
- Connect the equipment into an outlet on a circuit different from that to which the receiver is connected.
- Consult the dealer or an experienced radio/TV technician for help.

This equipment complies with FCC radiation exposure limits set forth for an uncontrolled environment. This equipment should be installed and operated with minimum distance 20 cm between the radiator and your body.

Radiation Exposure Statement

- This equipment complies with FCC radiation exposure limits set forth for an uncontrolled environment.
- This transmitter must not be co-located or operating in conjunction with any other antenna or transmitter.
- The availability of some specific channels and/or operational frequency bands are country-dependent and are firmware programmed at the factory to match the intended destination.
- The firmware setting is not accessible by the end user.
- The final end product must be labeled in a visible area with the following:

“Contains Transmitter Module 2AWY6 ELRT8723DUT” Requirement per KDB9

96369 D03

List of applicable FCC rules

List the FCC rules that are applicable to the modular transmitter. These are the rules that specifically establish the bands of operation, the power, spurious emissions, and operating fundamental frequencies. DO NOT list compliance to unintentional radiator rules (Part 15 Subpart since that is not a condition of a module grant that is extended to a host manufacturer. See also Section 2.10 below concerning the need to notify host manufacturers that further testing is required.³

Explanation

This module meets the requirements of FCC part 15C(15.247).

Summarize the specific operational use conditions

Describe use conditions that are applicable to the modular transmitter, including for example any limits on antennas, etc. For example, if point-to-point antennas are used that require reduction in power or compensation for cable loss, then this information must be in the instructions. If the use condition limitations extend to professional users, then instructions must state that this information also extends to the host manufacturer's instruction manual. In addition, certain information may also be needed, such as peak gain per frequency band and minimum gain, specifically for master devices in 5 GHz DFS bands.

Explanation: The EUT has Metal antenna and PCB antenna, Yes, the module contains 2 permanently attached antennas.

Limited module procedures

- If a modular transmitter is approved as a “limited module,” then the module manufacturer is responsible for

approving the host environment that the limited module is used with. The manufacturer of a limited module must describe, both in the filing and in the installation instructions, the alternative means that the limited module manufacturer uses to verify that the host meets the necessary requirements to satisfy the module limiting conditions.

- A limited module manufacturer has the flexibility to define its alternative method to address the conditions that limit the initial approval, such as: shielding, minimum signaling amplitude, buffered modulation/data inputs, or power supply regulation. The alternative method could include that the limited module manufacturer reviews detailed test data or host designs prior to giving the host manufacturer approval.
- This limited module procedure is also applicable for RF exposure evaluation when it is necessary to demonstrate compliance in a specific host. The module manufacturer must state how control of the product into which the modular transmitter will be installed will be maintained such that full compliance of the product is always ensured. For additional hosts other than the specific host originally granted with a limited module, a Class II permissive change is required on the module grant to register the additional host as a specific host also approved with the module.

Explanation

The module is a single module.

Trace antenna designs

For a modular transmitter with trace antenna designs, see the guidance in Question 11 of KDB Publication 996369 D02 FAQ Modules for Micro Strip Antennas and traces. The integration information shall include for the TCB review the integration instructions for the following aspects: layout of trace design, parts list (BOM), antenna, connectors, and isolation requirements.

- Information that includes permitted variances (e.g., trace boundary limits, thickness, length, width, shape(s), dielectric constant, and impedance as applicable for each type of antenna);
- Each design shall be considered a different type (e.g., antenna length in multiple(s) of frequency, the wavelength, and antenna shape (traces in phase) can affect antenna gain and must be considered);
- The parameters shall be provided in a manner permitting host manufacturers to design the printed circuit (PC) board layout;
- Appropriate parts by manufacturer and specifications;
- Test procedures for design verification; and Production test procedures for ensuring compliance.

The module grantee shall provide a notice that any deviation(s) from the defined parameters of the antenna trace, as described by the instructions, requires that the host product manufacturer must notify the module grantee that they wish to change the antenna trace design. In this case, a Class permissive change application is required to be filed by the grantee, or the host manufacturer can take responsibility through the change in FCC ID (new application) procedure followed by a Class II permissive change application.

Explanation: Yes, The module with Shrapnel antenna designs, and This manual has been shown the antenna, connectors, and isolation requirements.

RF exposure considerations

It is essential for module grantees to clearly and explicitly state the RF exposure conditions that permit a host product manufacturer to use the module. Two types of instructions are required for

RF exposure information

1. to the host product manufacturer, to define the application conditions (portable xx cm from a person's body);
and
2. additional text needed for the host product manufacturer to provide to end users in their end product manuals.

If RF exposure statements and use conditions are not provided, then the host product manufacturer is required to take responsibility of the module through a change in FCC ID (new application).

Explanation:

This module complies with FCC RF radiation exposure limits set forth for an uncontrolled environment, This equipment should be installed and operated with a minimum distance of 20 centimeters between the radiator and your body." This module is designed to comply with the FCC statement, FCC ID is: 2AWY6 ELRT8723DUT.

Antennas

A list of antennas included in the application for certification must be provided in the instructions. For modular transmitters approved as limited modules, all applicable professional installer instructions must be included as part of the information to the host product manufacturer. The antenna list shall also identify the antenna types (monopole, PIFA, dipole, etc. (note that for example an "omnidirectional antenna" is not considered to be a specific "antenna type")).

For situations where the host product manufacturer is responsible for an external connector, for example with an RF pin and antenna trace design, the integration instructions shall inform the installer that unique antenna connector must be used on the Part 15 authorized transmitters used in the host product. The module manufacturers shall provide a list of acceptable unique connectors.

Explanation: The EUT has Metal antenna and PCB antenna, Yes, the module contains 2 permanently attached antennas.

Label and compliance information

Grantees are responsible for the continued compliance of their modules to the FCC rules. This includes advising host product manufacturers that they need to provide a physical or e-label stating "Contains FCC ID" with their finished product. See Guidelines for Labeling and User Information for RF Devices – KDB Publication 784748.

Explanation: The host system using this module, should have label in a visible area indicated the following texts: "Contains FCC ID: 2AWY6-ELRT8723DUT"

Information on test modes and additional testing requirements

- Additional guidance for testing host products is given in KDB Publication 996369 D04 Module Integration Guide. Test modes should take into consideration different operational conditions for a stand-alone modular transmitter in a host, as well as for multiple simultaneously transmitting modules or other transmitters in a host product.
- The grantee should provide information on how to configure test modes for host product evaluation for different operational conditions for a stand-alone modular transmitter in a host, versus with multiple, simultaneously transmitting modules or other transmitters in a host. Grantees can increase the utility of their modular transmitters by providing special means, modes, or instructions that simulate or characterize a connection by enabling a transmitter. This can
- greatly simplify a host manufacturer's determination that a module as installed in a host complies with FCC requirements.
- Explanation: Can increase the utility of our modular transmitters by providing instructions that simulates or characterize a connection by enabling a transmitter.

Additional testing, Part 15 Subpart B disclaimer

The grantee should include a statement that the modular transmitter is only FCC authorized for the specific rule parts (i.e., FCC transmitter rules) listed on the grant, and that the host product manufacturer is responsible for compliance to any other FCC rules that apply to the host not covered by the modular transmitter grant of certification. If the grantee markets their product as being Part 15 Subpart B compliant (when it also contains unintentional-radiator digital circuitry), then the grantee

shall provide a notice stating that the final host product still requires Part 15 Subpart B compliance testing with the modular transmitter installed.

Explanation: The module without unintentional radiator digital circuitry, so the module does not require an evaluation by FCC Part 15 Subpart B. The host should be evaluated by the FCC Subpart B.

IC statement

This device contains licence-exempt transmitter(s)/receiver(s) that comply with Innovation, Science and Economic Development Canada's license-exempt RSS(s).

Operation is subject to the following two conditions

1. This device may not cause interference.
2. This device must accept any interference, including interference that may cause undesired operation of the device.

The term "IC: " before the certification/registration number only signifies that the Industry Canada technical specifications were met.

This product meets the applicable Industry Canada technical specifications.

compromettre le fonctionnement.


Please notice that if the ISSED certification number is not visible when the module is installed inside another device, then the outside of the device into which the module is installed must display a label referring to the enclosed module. This exterior label can use wording such as the following:

This transmitter must not be co-located or operating in conjunction with any other antenna or transmitter. This equipment should be installed and operated with a minimum distance of 20 centimeters between the radiator and your body.

Cet émetteur ne doit pas être Co-placé ou ne fonctionnant en même temps qu'aucune autre antenne ou émetteur. Cet équipement devrait être installé et actionné avec une distance minimum de 20 centimètres entre le radiateur et votre corps.

This radio transmitter 26332-ELRT8723DUT has been approved by Innovation, Science and Economic Development Canada to operate with the antenna types listed below, with the maximum permissible gain indicated. Antenna types not included in this list that have a gain greater than the maximum gain indicated for any type listed are strictly prohibited for use with this device.

	ANT Type	Manufacturer	Peak Gain	Frequency range	impedance
BT antenna	PCB antenna	EXPRESS LUCK INDUSTRIAL SHENZHEN LIMITED	-6.49 dBi	2400-2500MHz	50Ω
WIFI antenna	Metal antenna	INPAQ TECHNOLOGY CO., LTD.	-3.25 dBi	2400-2500MHz	50Ω



[Cdtech ELRT8723DUT Bluetooth 4.2 Module](#) [pdf] User Guide

ELRT8723DUT Bluetooth 4.2 Module, ELRT8723DUT, Bluetooth 4.2 Module, 4.2 Module, Module

References

-  _____
-  _____
- [User Manual](#)