



CDN Smart Mirror User Manual

[Home](#) » [CDN](#) » CDN Smart Mirror User Manual 



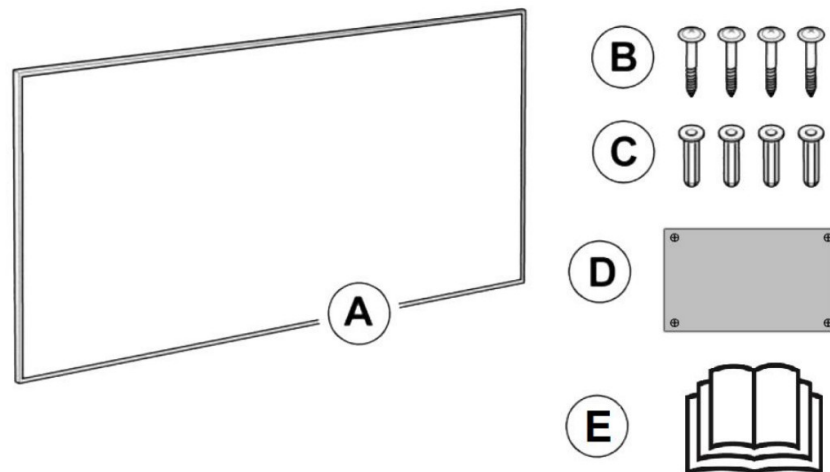
Smart Mirror
INSTALLATION AND OPERATING INSTRUCTION



READ BEFORE USE

- Thank you for purchasing this product.
- Please read the instructions carefully before attempting to install, operate or service the product.
- Please retain this booklet for future reference.
- Pictures for reference only, subject to our available products

SCOPE OF DELIVERY



- A: Smart Mirror ×1
 B: Screw×4
 C: Dowel×4
 D: Drill template×1
 E: Manual×1

Contents

- 1 PRODUCT INTRODUCTION**
- 2 SAFETY INTRODUCTION**
- 3 PRODUCT INFORMATION**
- 4 INSTALLATION**
- 5 OPERATION**
- 6 MAINTENANCE**
- 7 TROUBLESHOOTING**
- 8 Warranty Card**
- 9 Documents / Resources**
- 10 Related Posts**

PRODUCT INTRODUCTION

The smart mirror is a device which with that functions as a bathroom mirror with additional functions, such as displaying weather forecast, date and time, temperature and humidity, LED lighting, defogging, etc. Users can select the product with different functions according to self-requirement. Please ignore the related operating instructions in this booklet if you didn't subscribe to some functions when ordering.

SAFETY INTRODUCTION

Read this manual carefully before starting or using the device. Always store the manual in the immediate vicinity of the device or its site of use!

**Warning**

Do not ceiling mount those devices designed for walls only! Or else it may cause burning, fire, and falling off risk!

**Warning**

This appliance can be used by children aged 8 years and above and persons with reduced physical, sensory or mental capabilities or lack of experience and knowledge if they have been given supervision or instruction concerning the use of the appliance in a safe way and understand the hazards involved.

Children shall not play with the appliance. Cleaning and user maintenance shall not be made by children without supervision.

**Warning**

Children of less than 3 years should be kept away unless continuously supervised.

Children aged from 3 years and less than 8 years shall only switch on/off the appliance provided that it has been placed or installed in its intended normal operating position and they have been given supervision or instruction concerning the use of the appliance in a safe way and understand the hazards involved.

Children aged from 3 years and less than 8 years shall not plug in, regulate and clean the appliance or perform user maintenance.

**Warning**

Do not use the device in small rooms if persons are present who cannot leave the room independently and who are not under constant supervision.

**Warning**

Some parts of this product can become very hot and cause burns. Particular attention has to be given where children and vulnerable people are present. It's dangerous to installation close to curtains and other combustible materials. To avoid the possibility of burns, the following people should be much more careful when using the heaters: infants and kids, people with sensitive skin, the old, the sick, people who are drunk, people who take sleeping pills.

- Remove all the blue protective films(both on the front and on the back) before using.
- Be sure the usage voltage is between 110-240V, 50Hz, and power supply has been strictly in accordance with IEC, left is null wire and right is a live wire, and also well grounded.
- The devices will draw more current than small appliances, so a separate 5A socket is required.
- Do not use the device in potentially explosive rooms.
- Do not use the device in an aggressive atmosphere.
- Set the device up in an upright and stable position.
- Let the device dry out after a wet clean. Do not operate it when wet.
- Do not use the device with wet or damp hands.
- Do not expose the device to directly squirting water.
- Never insert any objects or limbs into the device.
- Do not cover or transport the device during operation.
- Do not sit on the device.
- This appliance is not a toy! Keep away from children and animals. Do not leave the device unattended during operation.
- Check accessories and connection parts for possible damage prior to every use of the device. Do not use any defective devices or device parts.
- Ensure that all electric cables outside of the device are protected from damage (e.g. caused by animals). Never use the device if electric cables or the power connection are damaged!
- The electrical connection must be according to the specifications in chapter Technical data.
- Insert the mains plug into a properly secured mains socket.

- Do not use the device when the socket or wire is overloaded.
- Observe the device's power input, cable length, and intended use when selecting extensions to the power cable. Completely unroll extension cables. Avoid electrical overload.
- Before carrying out maintenance, care, or repair work on the device, remove the main plug from the main socket. Hold onto the mains plug while doing so.
- Switch the device off and disconnect the power cable from the main socket when the device is not in use.
- Do not under any circumstances use the device if you detect damages on the mains plug or power cable. If the supply cord is damaged, it must be replaced by the manufacturer, its service agent, or similarly qualified persons in order to avoid a hazard. Defective power cables pose a serious health risk.
- During the installation of the device observe the minimum distances from walls and other objects as well as the storage and operating conditions specified in the Technical data chapter.
- Never drill into the heating device.
- Do not use the device once any damage is found on the glass or mirror surface.
- Do not use the device in immediate proximity to curtains.
- Do not place the device on the combustible ground.
- Do not transport the device during operation.
- Do not touch the surface during the device working to avoid burns.
- Allow the device to cool down before transport and/or maintenance work.
- Do not use this device near bathtubs, shower trays, swimming pools, or other water containers. Risk of electric shock!
- The device must be placed where the switches and controllers cannot be touched by a person in a bathtub or shower.
- Do not use this device in a child-care center and bathroom. (Only for Sweden)
- Do not place any objects, e.g. clothing, on the device.
- Do not use the device outdoors. Do not place the device on wet or flooded ground.
- Do not unplug by pulling on the cable. To unplug, grasp the plug, not the cable.



- Do not stretch the cable or place the cable under strain. Keep the cable away from heated surfaces.
- Do not run the cable under carpeting. Do not cover the cable with throw rugs, runners, or similar coverings. Do not route the cable under furniture or appliances. To avoid a tripping hazard arrange the cable away from traffic areas so that it will not be tripped over.
- Do not use it on soft surfaces, such as a bed, where openings may become blocked.
- Keep combustible materials, such as furniture, pillows, bedding, papers, clothes, and curtains, at least 0.9m (3 feet) from the front of the appliance and keep them away from the sides and rear when the appliance is plugged in.
- If there is a loose fit between the plug and the socket or the plug becomes very hot, the socket may need to be replaced. Check with a qualified electrician to replace the socket.
- Turn off all controls before unplugging. Unplug before connecting any tool or accessory.
- Allow the device to cool down before transport or maintenance work.
- Do not privately disassemble the device or replace parts, otherwise, it may cause mechanical failure, electric shock, fire, or bodily injury.

- The warranty is not applicable for the product fault caused by private disassembly.



Warning

Do not cover.

Insert the mains plug into an outlet that is properly installed and grounded.

Do not locate directly below a mains electricity supply socket.

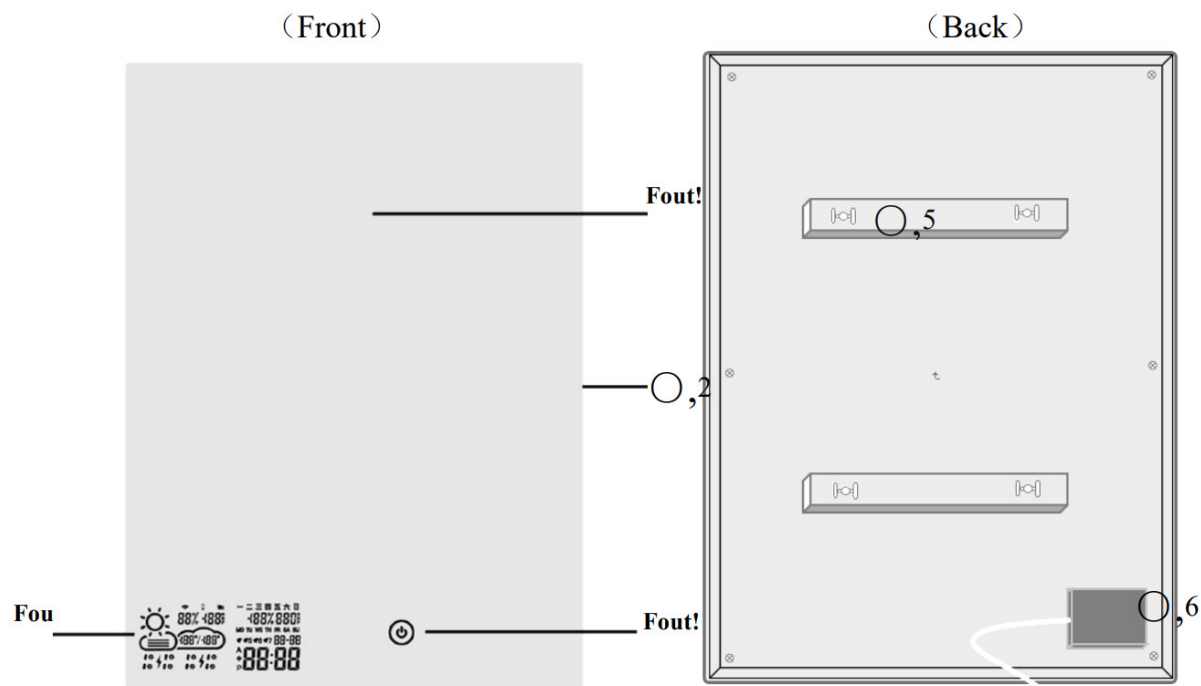
PRODUCT INFORMATION

TECHNICAL DATA

Model	BKD-G0606-WL H/D	BKD-G0806-WL H/D	BKD-G1006-WL H/D	BKD-G1206-WLH /D
Size	600*600mm	600*800mm	600*1000mm	600*1200mm
Thickness after install	44mm	44mm	44mm	44mm
Net Weight	7.2KG	9.8KG	12.2KG	14.9KG
Rated Voltage	110-240V/50HZ			
Heating/Defogging Power	200W/26W	250W/35W	350W/50W	500W/66W
LED Power	10W	12W	13W	15W
Weather Display Module Power	Around 2W			
Material	Mirror + Aluminum			
Weather server	Internet Weather			

Note: Heating and Defogging functions should be mutually exclusive.

STRUCTURE

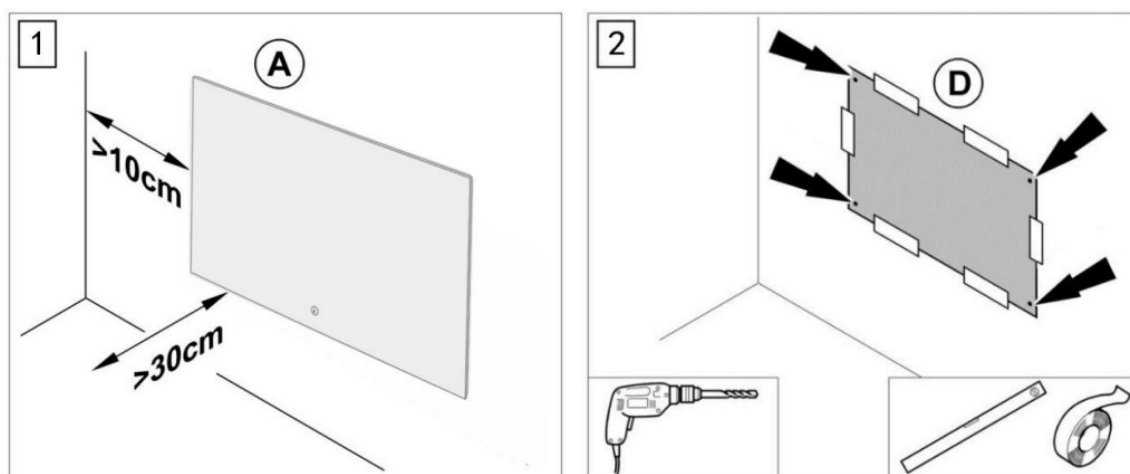


- ① Mirror Surface
- ② LED Strip Light
- ③ Touch Switch

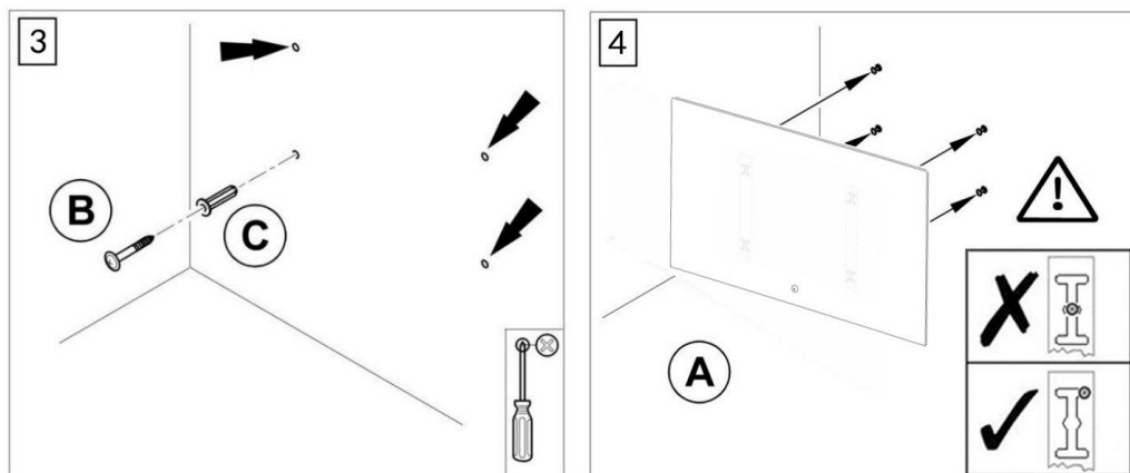
- ④ Display Screen Visible when double-click
- ⑤ Mounting Brackets
- ⑥ Temperature Humidity Sensor

INSTALLATION

1. Choose the mounting position, keep the required minimum distances
2. Mark the positions for the boreholes onto the drilling template (D) if there are no existing marks. Stick the drilling template on the wall;



3. Drill the holes. Insert the screws into the dowels and fasten the screws. The screws should protrude approx. 1.5 cm from the dowels
4. Tear off the back protective film, Hang the mirror (A) on the screws and move it in one **direction**.



Note: Please tear off the front and back protective film once you start to use it.

OPERATION

START-UP

1. Check if the power cord is intact.
2. Check if the power supply voltage is consistent, the power socket is required to have a grounding terminal and good grounding performance.
3. Whether the power cord plug and socket are matched, the socket can withstand 110-240V/50HZ, 10A. If it is lower than this value, it cannot be used to avoid accidents.

FUNCTIONAL OPERATING INSTRUCTIONS

1. After the power is turned on, the backlight of the touch button is always on;
Click the touch button once, the surrounding LED lights up, touch again, the light goes out. If the LED lighting is not selected when ordering, click the touch button is invalid;
2. Double click the touch button once, the weather display screen is turned on, and double click again to close;
3. Long press the touch button to turn on the heating or defogging function, the blue heating indicator next to the touch button lights up, long press again to turn off heating/Defogging. If the function of heating or fogging is not selected when ordering,
Long press the touch button is invalid.

WEATHER DISPLAY OPERATING INSTRUCTIONS

1. Ensure that the installation location has a good WIFI signal, and make the operating of mobile phone and smart mirror APP connected to the same WIFI hotspot;
2. Double click the touch switch to start the screen and wait for the screen to display the SCAN status;
3. Scan the QR code of the following figure (1) and install the APP according to the prompts;

Note: This App only supports Android phone operation for the time being. The weather display WIFI needs to use the Android phone only for the first time and when you occasionally change its settings later.

For IOS operating system, please search and install the APP named "WifiClock" in App Store



[http://www.byecold.cn/wp-content/uploads/...
html](http://www.byecold.cn/wp-content/uploads/...html)

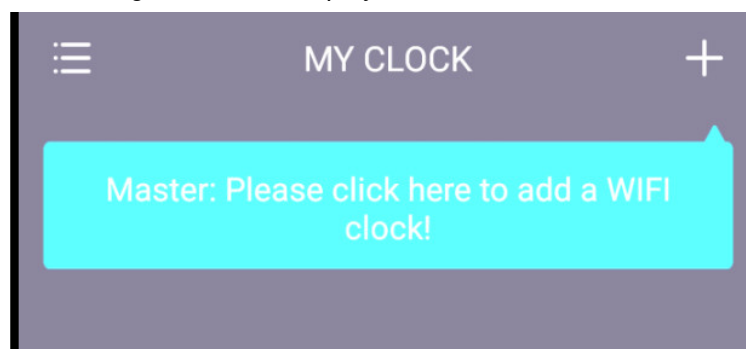
Figure (1)



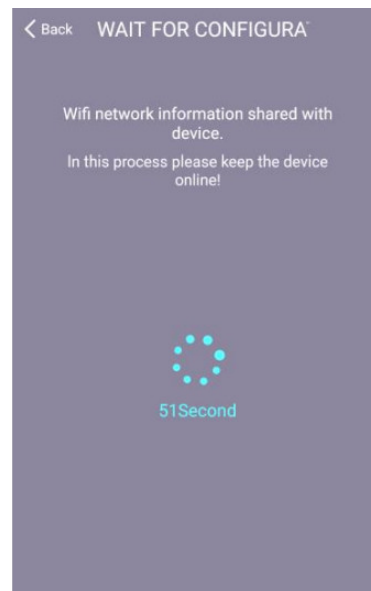
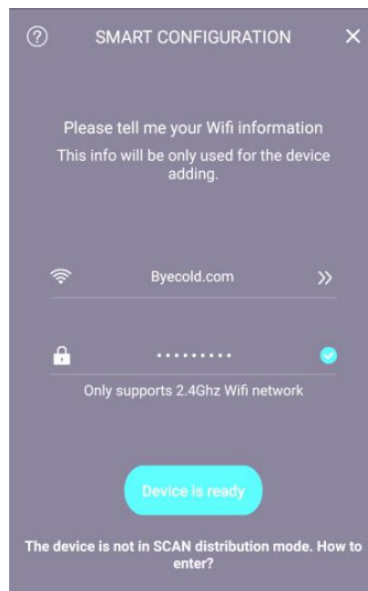
WifiClock

Figure (2)

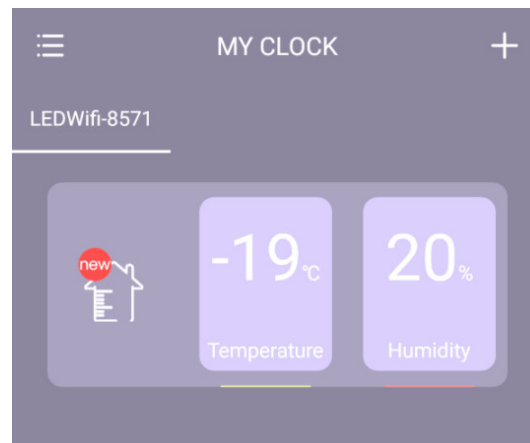
4. After the installation is successful, find the WifiClock application icon on the mobile phone desktop and open it, as shown in the figure above (2);
5. After opening the app, the following interface is displayed, click to add a WIFI clock;



6. Next, select the WIFI hotspot and enter the wireless password. The screen will display the configuration, waiting for about 60 seconds, at the same time, the mirror screen displays JOIN, then PAIR is set successfully.



7. After the pairing is successful, the following interface is displayed. A mobile phone can add several WIFI clock terminals.



8. For each WIFI clock device, you can make the following settings.

1) Basic setting: You can set the switch button sound. This button sound refers to whether the buzzer inside the mirror is buzzing when the phone is operated. 24 hours/12 hours display selection; day and month mode selection; temperature unit selection; digital tube display brightness adjustment on the mirror.

2) Alarm setting: Users can set several groups of alarms through the mobile phone. Until the time, the buzzer alarm inside the mirror will sound.

3) Weather setting: After the weather scroll screen is turned on, the screen will scroll the weather of the day and tomorrow (d2); the area setting is used to select the area where the weather is to be displayed. The default is automatically set to the local area where the network IP belongs. If the automatic positioning is not successful, you need to manually set the area; server selection means that if the user finds that the displayed weather is quite different from the actual weather, you can replace another server to get a more accurate weather display; today's weather selection refers to whether the screen display is real-time weather or the total forecast of the day.

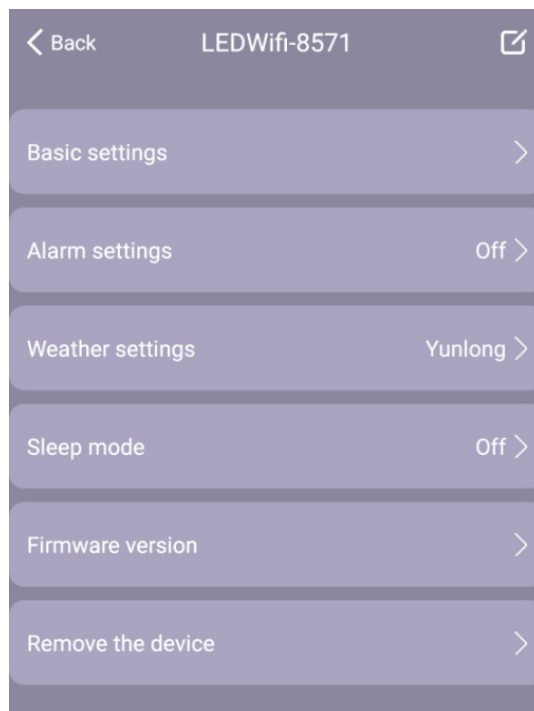
Note: The weather information source of this APP application is from the internet, and there may be that the weather update is not timely.

4) Sleep mode: Refers to setting the digital light screen display timing, the screen system will automatically reduce the brightness during sleep, to achieve the purpose that energy saving or not affect the user's sleep;

5) Firmware version: Refers to the current software version, the system will automatically update the version if necessary;

6) Delete device: This refers to the mobile phone is no longer connected to the device, after deleting, you need to restart the connection.

7) When the WIFI hotspot is replaced, you need to restart the device to reconnect. **The specific operation is to cut off the total power supply three times or more. Each power-on needs to hear the "Patter" inside the mirror before the next power-off. After three or more power-offs, double-click the touch switch to turn on the screen. The SCAN status is displayed and set up by the mobile phone.**



8)The device displays 11 different icons, including sunny, overcast, cloudy, light rain, heavy rain, thunderstorm, shower, light snow, heavy snow, sleet, and haze/fog. The icons are shown in the following table:

Weather	Icon	Weather	Icon
Sunny		Shower	
Overcast/Cloudy		Light snow	
Cloudy to clear		Heavy snow	
Light rain		Sleet	
Heavy rain		Foggy	
Thunderstorm		Unknown	

MAINTENANCE

- ☒ The appliance must be switched off and unplugged before taking regular cleaning and care. Otherwise, it may cause electric shock..
- ☒ The appliance needed only external cleaning and care regularly.
- ☒ Please use some medicinal alcohol to clean the surface with a damped soft cloth. Never clean it under running water. Do not use thinner, toluene, benzene, acidic/alcoholic cleaning agents, or any chemical clothes on the appliance.
- ☒ After regular care and cleaning, well pack it into the original packing box, then put it in a dry and cool environment for storage.
- ☒ Wind and keep dry the cable when not in use.

TROUBLESHOOTING

The device has been checked for proper functioning several times during production. If a malfunction occurs nonetheless, check the device according to the following list.

Problem	Reason	Measure
The touch button does not light	The device does not start	Check the power connection
The device makes noises after switch-on	Some parts are loosely caused by transportation	It's a normal process. No measures are required.
The surface bulges slightly	The material expands due to heating	It's a normal process. No measures are required.
Indoor Temperature/humidity are displayed inaccurately	The sensor may be covered	Make sure that the sensor is placed in the right position, should not be covered or touched by other materials.
The device is unable to connect to WIFI	The wifi signal is poor or network failures	Restart the router and device.
The real-time weather is displayed inaccurately	weather data is not updated	Connect another server in your APP.
Display code Err	The device failed to connect to the configured network and the previous data already expired.	Restart your router, make sure that the wifi signal strength is as good as enough
Display code 05	The configured router is connected to too many devices	Replace another router or reduce connected devices.
Display code 201	The configured network is unreachable or the WIFI hotspot is replaced	Make sure the device, Wi-Fi router, and smartphone are closer together. Refer to Step 8-(7).

Warranty Card

NAME_____TEL_____

ADD_____

MODEL_____ORDER NO._____

Date_____

Failure Description_____

THANK YOU FOR CHOOSING TO BUY THIS APPLIANCE.

Customers can contact us for repairing or replacement of this appliance if it is found to be defective due to faulty materials, workmanship, or function within 1 year of purchase or delivery.

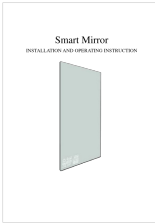
We do not guarantee the repair or replacement of a product where a defect is a result of:

- Damage caused by not carrying out the recommended appliance maintenance.
- Accidental damage, faults caused by negligent use or care, misuse, neglect, careless operation, or handling of the appliance which is not in accordance with our Operating Manual.
- Use of the appliance for anything other than normal domestic household purposes.

- Faulty installation.
- Repairs or alterations carried out by parties other than the manufacturer or its authorized agents.

If you are in any doubt as to what is covered by your guarantee, please contact us.

Documents / Resources

 The image shows the cover of a user manual for the 'Smart Mirror'. The title 'Smart Mirror' is at the top, followed by the subtitle 'INSTALLATION AND OPERATING INSTRUCTIONS'. Below the text is a photograph of a slim, rectangular mirror mounted on a wall.	<p>CDN Smart Mirror [pdf] User Manual CDN, Smart Mirror</p>
--	---