

CBC GROUP LPR
License Plate
Recognition App



CBC GROUP LPR License Plate Recognition App Instructions

[Home](#) » [CBC GROUP](#) » CBC GROUP LPR License Plate Recognition App Instructions 

Contents

- 1 [CBC GROUP LPR License Plate Recognition App](#)
- 2 [LPR – License Plate Recognition App](#)
- 3 [Detecting blacklisted vehicles](#)
- 4 [Registration of an event action rule that uses the vehicle direction property](#)
- 5 [Documents / Resources](#)
 - 5.1 [References](#)
- 6 [Related Posts](#)



CBC GROUP LPR License Plate Recognition App

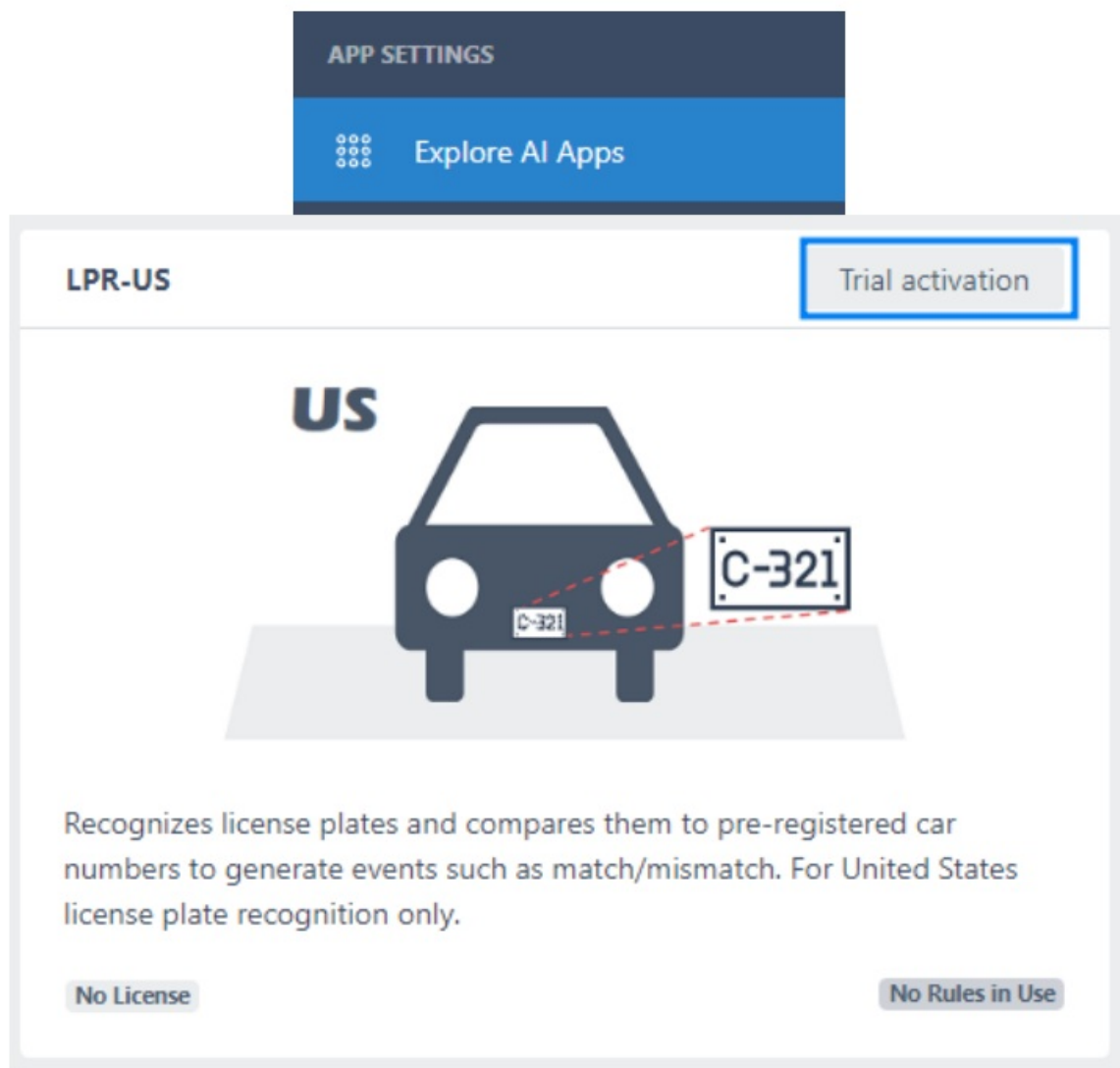


LPR – License Plate Recognition App

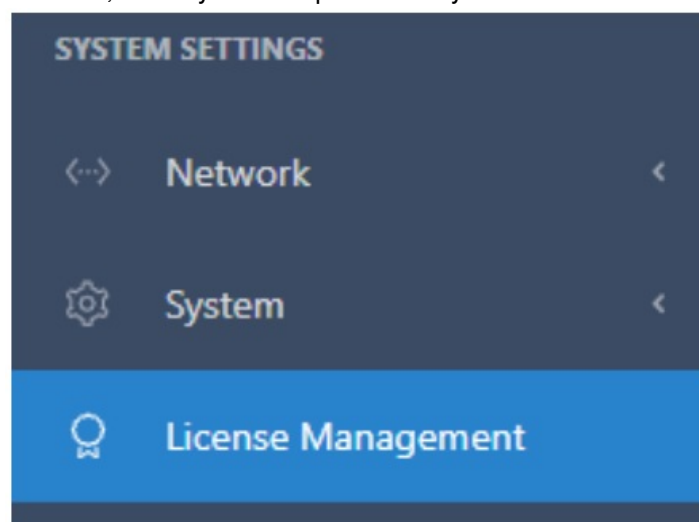
The LPR app is designed to recognize a license plate and perform various actions. With LPR, you can either pass the recognized license plate or search for it in a list of pre-registered license plates to trigger the required action. We currently support LPR apps in four regions: US, Europe, Japan, and Korea.

Activate a license to use an app

- To use the LPR app, you need a license to use the app.
- Active a trial license to issue a trial license for testing.
- To activate a trial license, click the Activate trial button at the top of the target app card in the Explore AI Apps menu.
- Your device must be connected to the internet to activate a trial license.



If you need to purchase a full license, contact the place where you purchased your device. Licenses to use the app be issued in the form of a JSON file, which you can upload from your device's License Management menu.

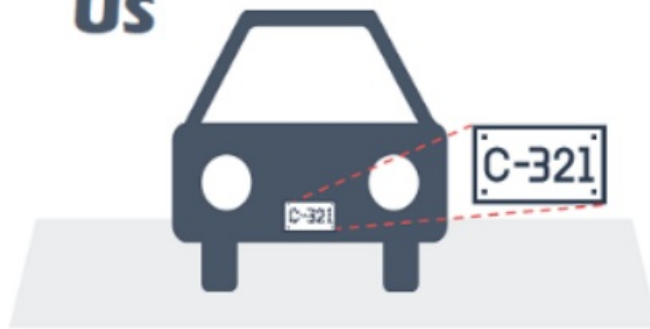


Detecting blacklisted vehicles

Registering a blacklisted vehicle number

1. Click an app card in the Explore AI apps menu to go to the app's settings UI screen.

US



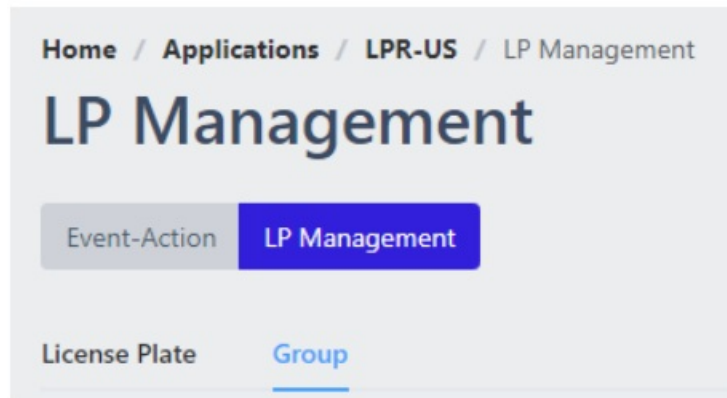
Recognizes license plates and compares them to pre-registered car numbers to generate events such as match/mismatch. For United States license plate recognition only.

8 CH Licensed

1 Rules in Use

The LPR app manages the list of license plate numbers as groups.

2. To register a predefined group, go to the LP Management menu.
3. Then go to the Group menu to create a blacklist group.



4. Add a new blacklist group by clicking the Add Group menu in the Add drop-down at the top right of the group list table.

A screenshot of a web application interface showing a form titled 'Group - ADD'. The form has two input fields: 'Group Name' with the value 'Blacklist' and 'Note' with the value 'Habitual littering vehicles'. At the bottom right of the form are two buttons: 'Cancel' and 'Submit'. A green arrow points from the 'Add' button in the sidebar to the 'Group - ADD' form.

5. Once you have registered the blacklist group, go to the License Plate menu and register the target plate number. Specify it as the Blacklist group you registered earlier.

The screenshot shows a web interface for registering license plates. On the left, a sidebar contains an 'Add' button and a menu with options: '+ Add LP Number', 'Add Batch(.csv)', 'Example Download', 'CSV Export', and 'Reset'. A green arrow points from the 'Add Batch(.csv)' option to the 'License Plate' input field in the main form. The form has two tabs: 'License Plate' (selected) and 'Group'. The 'License Plate' tab contains the following fields: 'License Plate' (text input with 'ABC123'), 'Number' (text input), 'Note' (text area with 'Habitual littering (White 1.5t truck)'), and 'Group List' (dropdown menu showing 'No Groups'). Below the 'Group List' dropdown is a 'Blacklist' button. At the bottom right of the form are 'Cancel' and 'Submit' buttons.

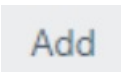
You can batch register multiple car numbers and groups using a batch file in CSV format. We have provided an example for batch registration, so it is convenient to edit the contents of the file downloaded from Example Download and register them all at once using the Add Batch(.csv) menu.

Registering an Event Action Rule

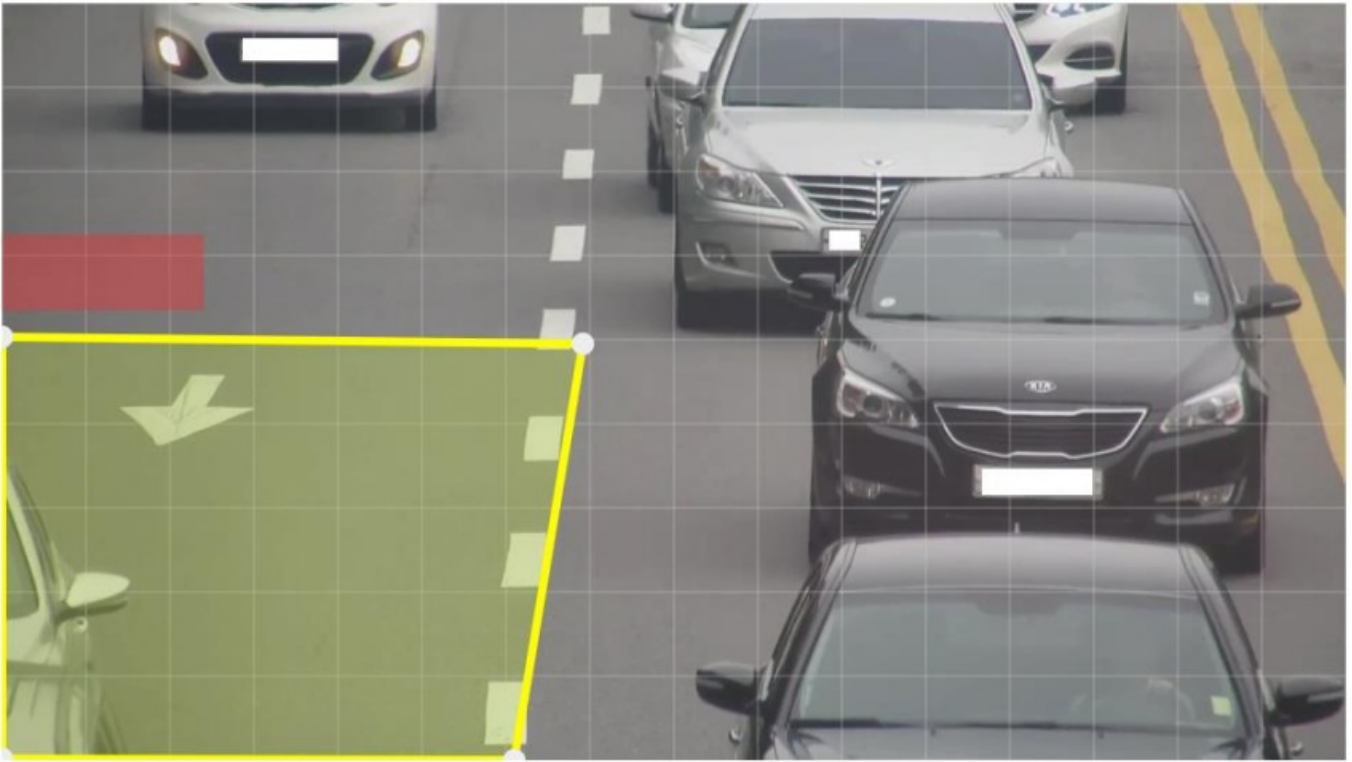
Once you've registered the groups and License plate numbers to be detected, you can set up detection events to configure the action when a LP is detected.

1. You can register a detection event and an action rule that defines the action to be triggered when the event occurs by going to the Event- Action menu.

2. Click the  button to register a new event action rule.

3. In the event settings, click the  button to add a new event.

See this document for how to set up detection zones and labels.



Event Setting

Recognition Mode LP In Groups ▼

Group Included In One or More Group ▼

Matching Policy Normal ▼

Allow similar characters

- Select the LP in Groups of the Recognition Mode, since the event is to recognize license plate numbers that are included in a blacklist group.
 - The event trigger policy based on Recognition Mode is as follows.
 - LP in Groups – the event is only raised if the detected LP number is searched in all or some of the pre-registered groups.
 - LP Not In Groups – the event is only raised if the detected LP number is not in the selected group or not in any group.
 - Any LP Number – the event is always raised whenever LP number is detected.
- Select the blacklist group. You can select multiple groups.
 - The Group working policy is as follows.
 - If multiple groups are selected, the event is raised when an LP number is detected that is included in any of the groups.
 - If no groups are selected, the event is raised when an LP number registered to any of the registered groups is detected.

3. The matching policy is classified into three levels with settings for how far to allow similar characters.
- The detailed policy is as follows.
 - Very high – event raises only if the full text of the registered and detected license numbers match exactly.
 - High – event raises if there is a difference of only one similar character (e.g. O/D) in the text of the registered and detected LP number.
 - Normal – the event occurs even if there is a difference between the registered LP number and the detected LP number in the case of similar characters.

Action Setting

Set the action to take when a blacklisted LP number is detected. When a blacklisted LP is detected, you can switch on the warning lights via Relay or broadcast an alert through the camera's speaker. You can also send event details via HTTP, FTP, etc. For the types of action handlers and how to set up each, see the Action Setting Guide and subdocuments.

Registration of an event action rule that uses the vehicle direction property

When detecting a license plate number, you can reflect the car movement direction in the Event Setting Menu. The movement direction allows you to do the following.

- Filter the event to only occur for LP numbers that are moving in a specific direction based on the movement direction of the vehicle.
- Including directional information in action messages by naming the direction of movement.

```
{
  "lp": "[REDACTED]",
  "dir": "B",
  "dir_name": "Exit",
  "time": "2023-10-05 11:44:07"
},
{
  "lp": "[REDACTED]",
  "dir": "A",
  "dir_name": "Entry",
  "time": "2023-10-05 11:46:12"
}
```

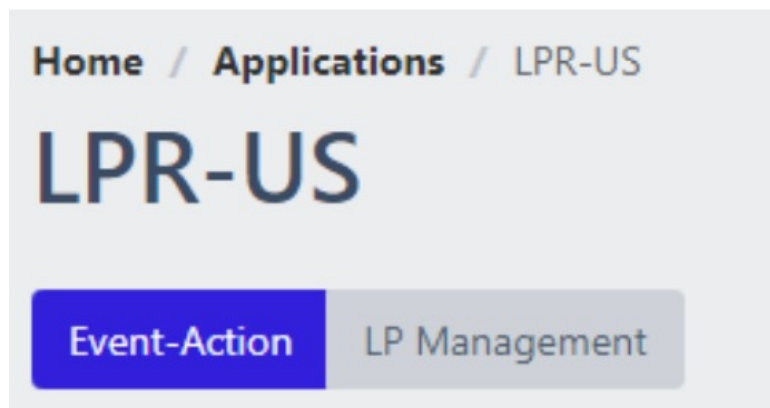
Example of recognizing only LP number of vehicles moving in a specific direction



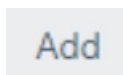
For example, suppose a workshop distinguishes as like example image the direction of movement between vehicles bringing in materials and vehicles leaving after finishing the incoming operation, the workshop may want to occur and record events only for vehicles bringing in materials. You can also set it to detect the direction of vehicles and events only for moving in specific directions in similar use cases.

Registration of an event action rule that uses the vehicle direction property

Go to the Event-Action menu to register an action rule. An action rule defines a detection event and an action to be triggered when the event occurs.



1. Click the button to register the new event action rule.



2. In the event settings, click the button to add a new event.

- See this document for how to set up detection zones and labels.

3. In the setting of Object Movement Direction, you can make settings based on the direction of movement.

Object Movement Direction i

Direction Discrimination

Horizontal

↔

A-Direction Recognition

←

☒

A-Direction Name

Entering

B-Direction Recognition

→

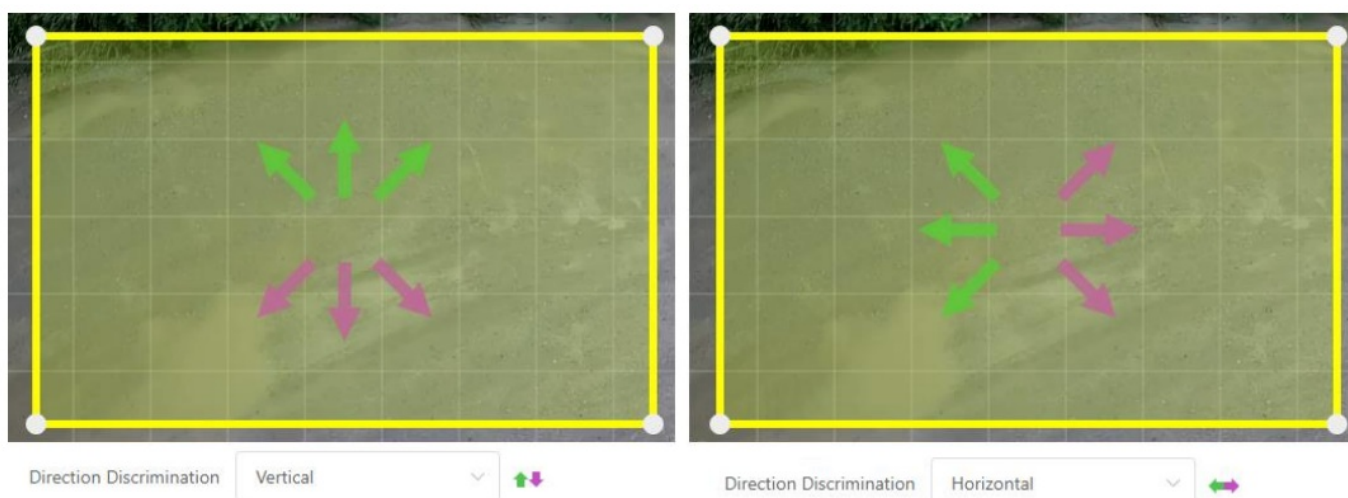
☐

B-Direction Name

Direction B

Set the Direction Discrimination as follows depending on the direction of movement of the vehicle.

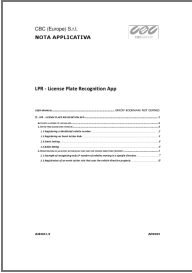
- Not use – Detects and recognizes LP numbers regardless of the direction of vehicle movement.
- Vertical – Use when the direction of vehicle movement is separated by a vertical direction. Specified by top (A)/bottom (B) direction.
- Horizontal – Use when the direction of vehicle movement is distinct in the horizontal direction. Specified by Left (A) / Right (B) direction.



Only recognize license plates for vehicles moving in that direction if the Direction Recognition is checked. This allows you to filter out vehicles moving in unwanted directions without recognizing their license plate numbers. By entering a Direction Name, you can send a custom direction name in the action message when the event occurs. Related action messages are ::OBJ[MOVEMENT_DIR], ::OBJ[MOVEMENT_DIR_NAME]. The:: OBJ[MOVEMENT_DIR] token is replaced by A or B in the action message, depending on the direction of vehicle movement. The:: OBJ[MOVEMENT_DIR_NAME] token is replaced with the name of each directional

customization in the action message, depending on the direction of vehicle movement. See [this document](#) for a detailed guide on how Action Message tokens work and how to use them.

Documents / Resources

	<p>CBC GROUP LPR License Plate Recognition App [pdf] Instructions ZN-AIBOX-STD_LPR_AP0089, LPR License Plate Recognition App, LPR, License Plate Recognition App, License Plate Recognition, Plate Recognition App, Plate Recognition, Recognition App, Recognition, App</p>
---	--

References

- [Sign In – Documents](#)
- [Sign In – Documents](#)
- [Sign In – Documents](#)
- [User Manual](#)

[Manuals+](#), [Privacy Policy](#)

This website is an independent publication and is neither affiliated with nor endorsed by any of the trademark owners. The "Bluetooth®" word mark and logos are registered trademarks owned by Bluetooth SIG, Inc. The "Wi-Fi®" word mark and logos are registered trademarks owned by the Wi-Fi Alliance. Any use of these marks on this website does not imply any affiliation with or endorsement.