

CATTIEHONEY B0B7LSPMPP Chicken Nesting Box



# CATTIEHONEY B0B7LSPMPP Chicken Nesting Box User Guide

[Home](#) » [CATTIEHONEY](#) » CATTIEHONEY B0B7LSPMPP Chicken Nesting Box User Guide 

## Contents

- 1 CATTIEHONEY B0B7LSPMPP Chicken Nesting Box
- 2 SPECIFICATION
- 3 MAINTENANCE INSTRUCTIONS
- 4 PARTS LIST
- 5 INSTALLATION STEPS
- 6 PLACEMENT METHODS
- 7 Q&A
- 8 Documents / Resources
  - 8.1 References
- 9 Related Posts

# CATTIEHONEY

CATTIEHONEY B0B7LSPMPP Chicken Nesting Box



- **Egg-cellent Living:** Where Fresh Eggs Begin.
- Read this manual carefully and completely, and retain it for future reference.

## SPECIFICATION

Product Name	Chicken nesting box
Product Material	Galvanized plate; ABS
Product Size	35.43*31.89*13.78 inch
Product Weight	11.3kg/24.9lb
Product Function	Offer a designated area where hens can feel secure and relaxed to lay their eggs


## WARNINGS & CAUTIONS

- If the product exhibits slight deformation upon receipt, it may be a result of transportation. Please promptly contact our customer support for assistance.
- To avoid hazards related to improper device installation, installation must be performed by people who have read and understand the installation instruction before beginning work.
- Exercise caution when using tools during the installation process to prevent accidental scratches. As a precautionary measure, utilize protective equipment and wear the supplied gloves when necessary.
- Ensure that the product is positioned on a flat and level surface during usage to guarantee stability and optimal performance.
- To aid the chickens in adapting to the new nesting box. consider providing straw and fake eggs within the box, as this may facilitate a faster acclimation process.
- Regularly inspect the eggs within the nesting box to prevent overcrowding.

## MAINTENANCE INSTRUCTIONS

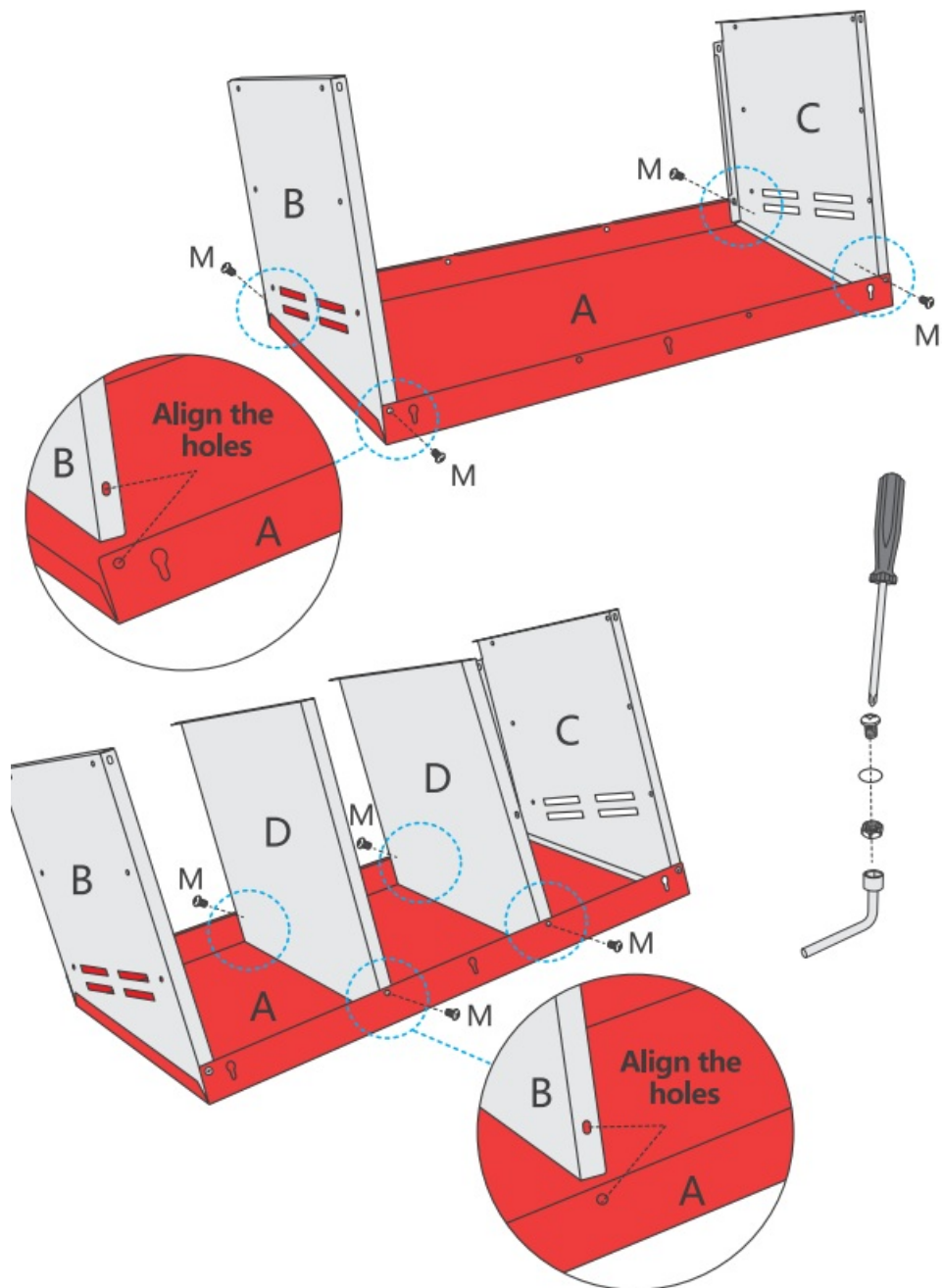
- Keep the product clean and free from debris to prevent the spread of diseases and parasites.
- Exercise caution when collecting eggs to avoid breakage and potential contamination.
- Do not use corrosive cleaning agents when performing cleaning.
- Do not expose to heat, water, high levels of humidity, or direct sunlight.

## PARTS LIST

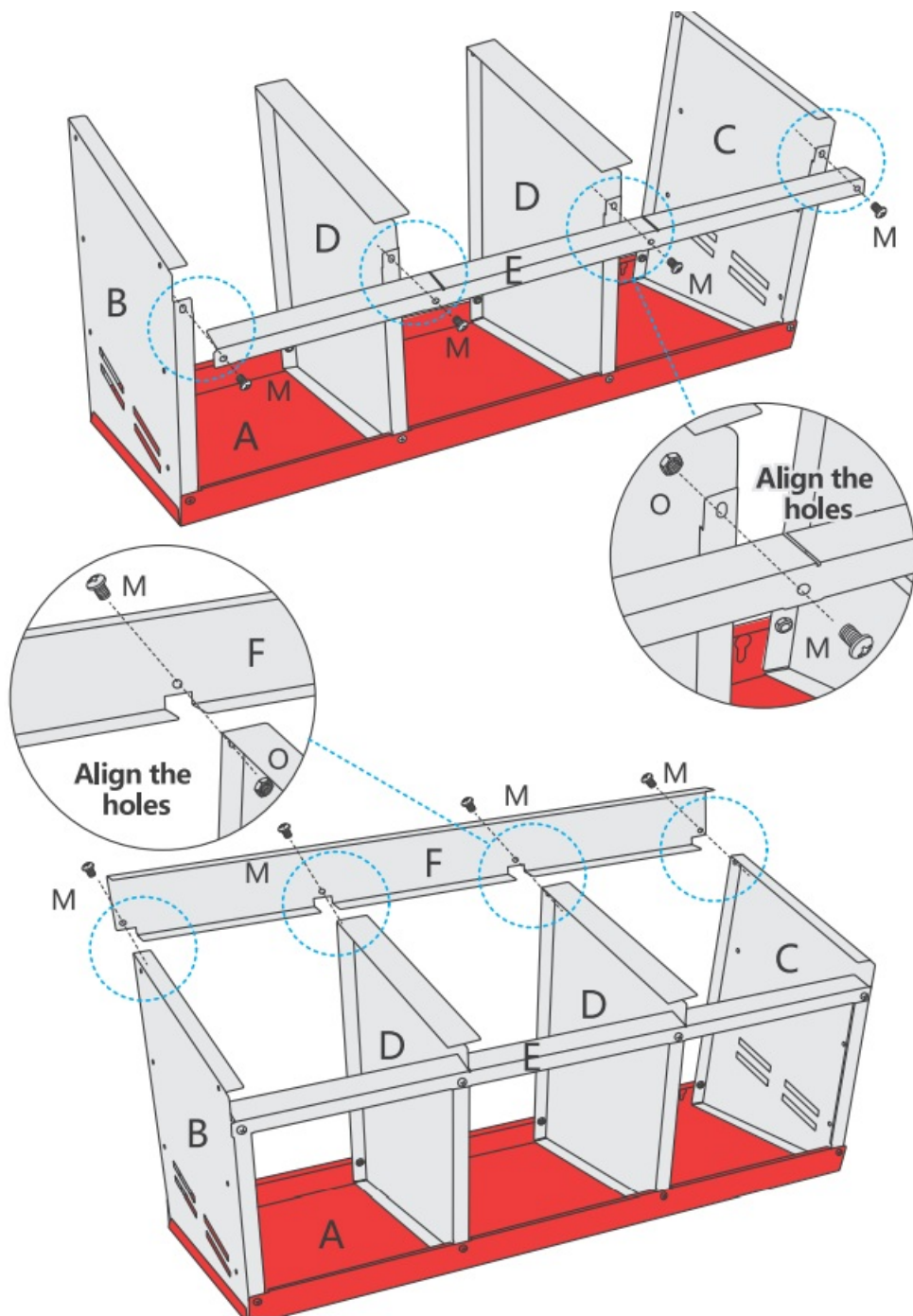
<b>A Roof Plate</b>  <b>×1</b>		<b>B Left Plate</b>  <b>×1</b>	<b>C Right Plate</b>  <b>×1</b>
<b>D Middle Plate</b>  <b>×2</b>	<b>E Fixing Plate</b>  <b>×1</b>	<b>F Fixing Plate</b>  <b>×1</b>	<b>G Support Leg</b>  <b>×2</b>
<b>H Support Leg</b>  <b>×2</b>	<b>I Compartment Box</b>  <b>×3</b>	<b>J Compartment Cover</b>  <b>×3</b>	<b>K Foot Pad</b>  <b>×10</b>
<b>L Nesting Pad</b>  <b>×3</b>	<b>M Short Screw</b>  <b>×20</b>	<b>N Long Screw</b>  <b>×10</b>	<b>O Nut</b>  <b>×28</b>
<b>P Wall Screw</b>  <b>×5</b>	<b>Q Wrench</b>  <b>×1</b>	<b>R Screwdriver</b>  <b>×1</b>	<b>S Fabric Glove</b>  <b>×2</b>

## INSTALLATION STEPS

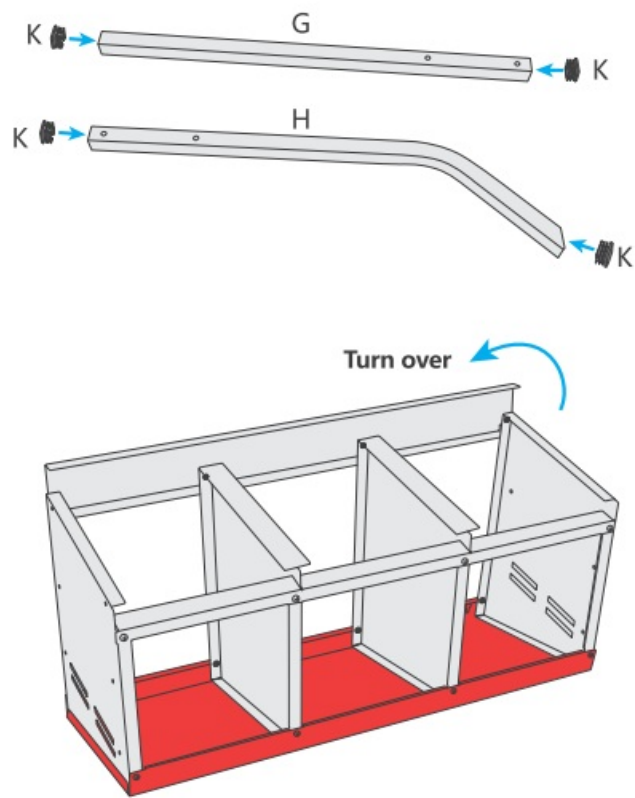
### STEP 1



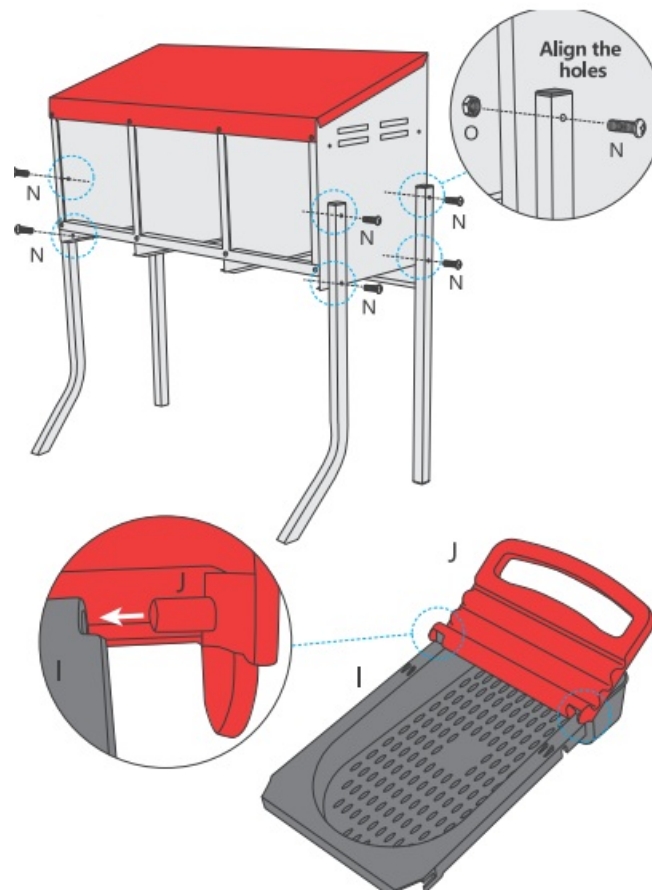
STEP 2



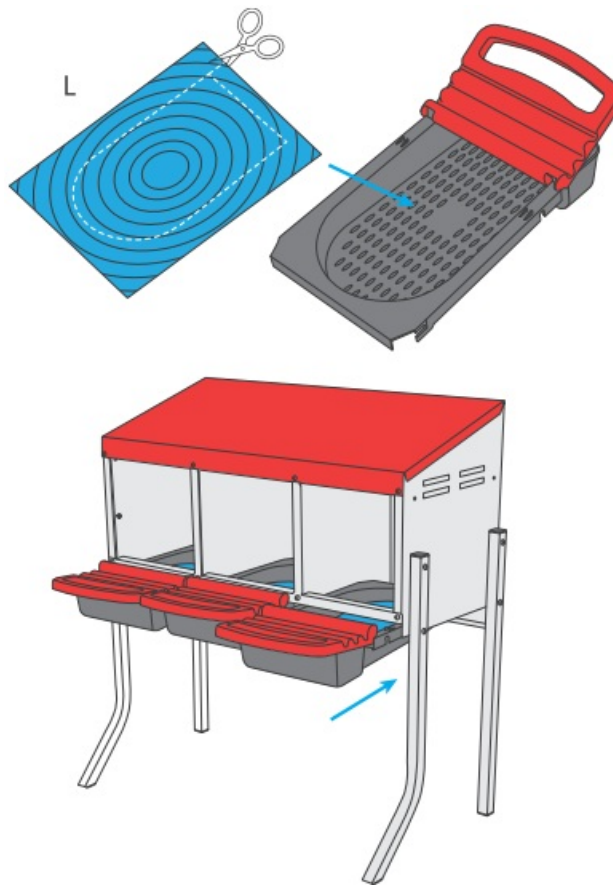
**STEP 3**



#### STEP 4

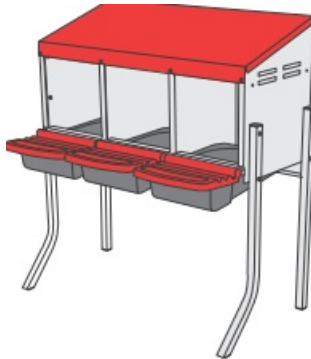


#### STEP 5

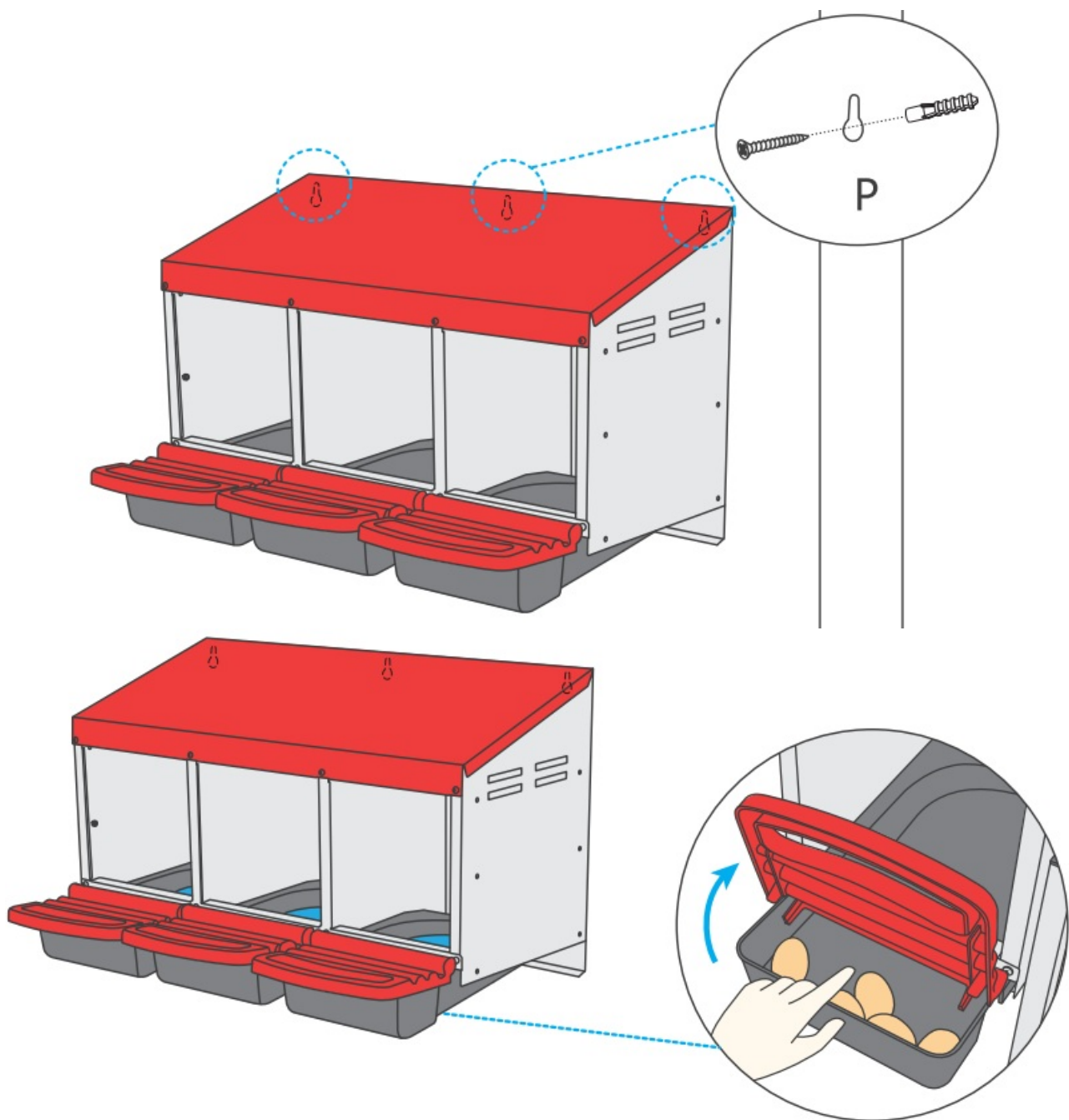


## PLACEMENT METHODS

**Method-1** Install legs to stand.



**Method 2** Attach it to the wall.



## Q&A

1. **Q1: How many methods can chicken nest boxes be placed?**
  - **A:** 2 methods. You can hang it on the wall, or use the stand legs to place it flat on the ground.
2. **Q2: After installing the support legs, what is the height of the chicken nesting box from the ground?**
  - **A:** 18 inches, which is the most comfortable and safe laying height for chickens.
3. **Q3: Can spare parts be replaced if they are damaged?**
  - **A:** You can contact us on Amazon with photos of the damaged parts and we will be happy to help.
4. **Q4: Are the screws too short for proper threading and securing of the nut?**
  - **A:** If the screws are too long, they may protrude and hinder the internal use of the chicken nesting box.
  - Please ensure careful alignment of the screw holes and proceed with installation.

Documents / Resources

	<p><a href="#">CATTIEHONEY B0B7LSPMPP Chicken Nesting Box</a> [pdf] User Guide B0B7LSPMPP Chicken Nesting Box, B0B7LSPMPP, Chicken Nesting Box, Nesting Box, Box</p>
---	--

References

- [User Manual](#)

[Manuals+](#), [Privacy Policy](#)

This website is an independent publication and is neither affiliated with nor endorsed by any of the trademark owners. The "Bluetooth®" word mark and logos are registered trademarks owned by Bluetooth SIG, Inc. The "Wi-Fi®" word mark and logos are registered trademarks owned by the Wi-Fi Alliance. Any use of these marks on this website does not imply any affiliation with or endorsement.