

## Contents [ [hide](#) ]

- [1 Catlog CP02 Digital Security Locker](#)
- [2 Specifications](#)
- [3 How to set up Catlog Pendant](#)
- [4 Battery Charging](#)
- [5 FAQs](#)
- [6 Documents / Resources](#)
  - [6.1 References](#)

# Catlog\_

## Catlog CP02 Digital Security Locker



## Specifications

- **Product Name:** Catlog Pendant
- **Compatibility:** Requires Catalog Home setup
- **Identification Number:** Pendant ID starts with '2'

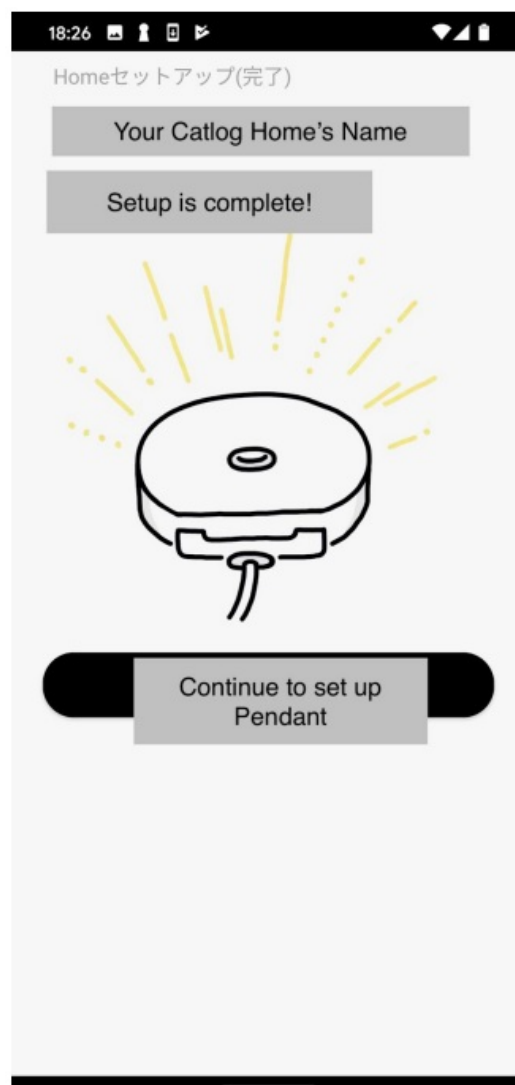
- **Charging Time:** Approximately 4 hours for full charge
- **Power Source:** Catalog Home (must be powered on)
- **Communication:** Bluetooth Low Energy (BLE)

## Note

The actual app and contents will not be in English. Please use this document as a reference when using the app. To setup Catlog Pendant, the Home must be set up beforehand. Please refer to App Manual for Catlog Home. If there are any issues or questions, please contact me.

## How to set up Catlog Pendant

1. After setting up Catlog Home, press the “Continue to set up Pendant” button to set up Catalog Pendant. If you have already set up Catalog Home, please refer to step 9 to begin the Catlog Pendant’s setup process.



2. Place the Catlog Pendant on the Catlog Home. Make sure the Pendant is placed firmly. Please wait until Catlog Home automatically detects Pendant. When the

detection is successful, the app screen will change automatically. If the Pendant cannot be detected for a long time, there may be an issue with the Pendant or the Catlog Home's setup. Please contact me for assistance.



3. When the Pendant is successfully detected, the app will ask you to fill in the information of your cat who would wear this Pendant. The Pendant ID is an identification number that starts with '2'. Please fill in 'Name', 'Gender', and 'Breed' to proceed. Once the fields are filled, press "OK".

12:57

Pendantセットアップ(2/3)

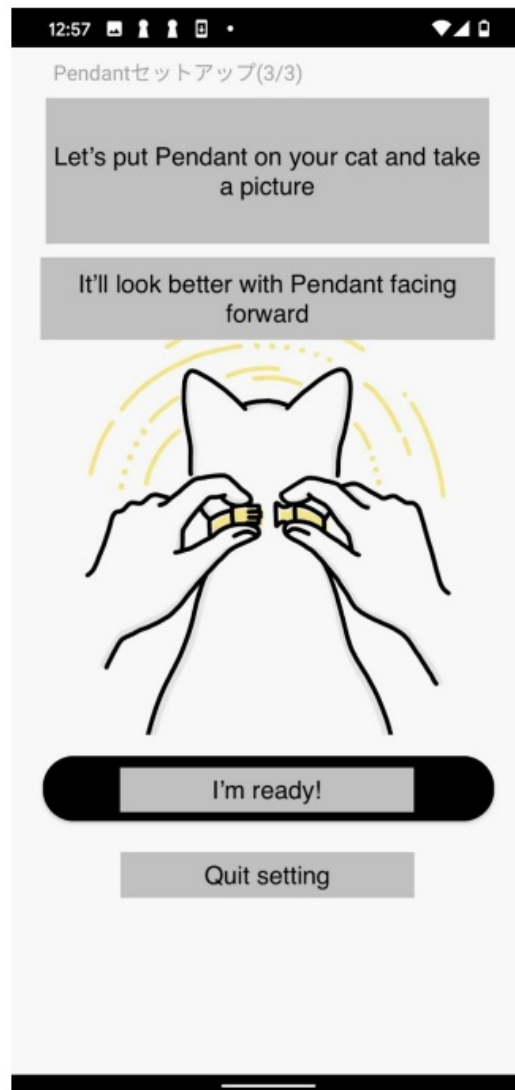
Who will wear this Pendant?

ID:

\*誕生日わからない場合は出会った日などを入力してください

小数点第1位まで有効

4. The app will ask you to take or select a picture. It can be any picture of choice. Please press the “I’m ready!” button to proceed.



5. A device's prompt will be shown at the bottom of the screen. It will let you choose between Camera and Gallery (Library). Please select one of the options and proceed accordingly. You can just take a random picture with a camera.



6. Once you take or choose a picture, it'll show a preview. Press the "OK" button and proceed.

This looks great! Do you like the picture?

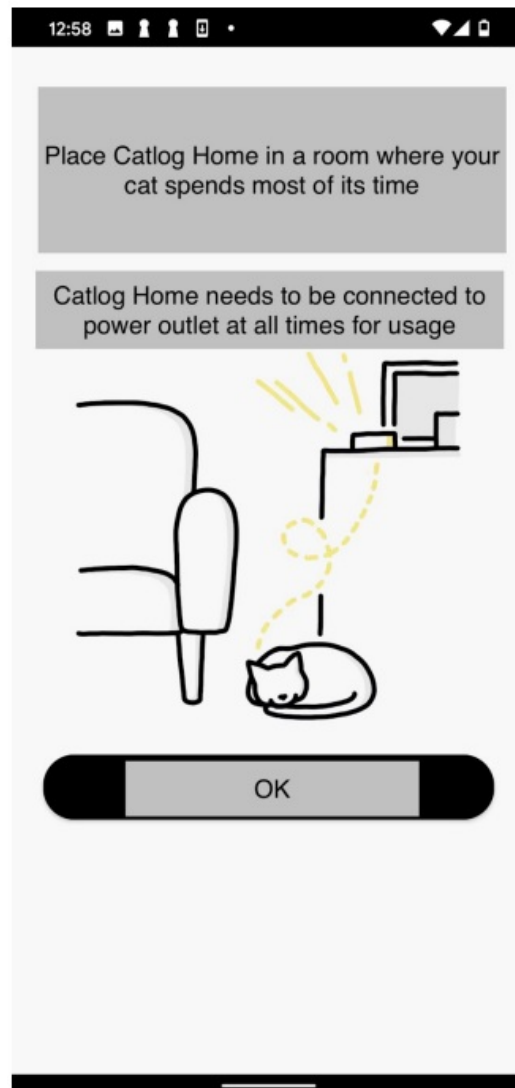


Try again

OK!

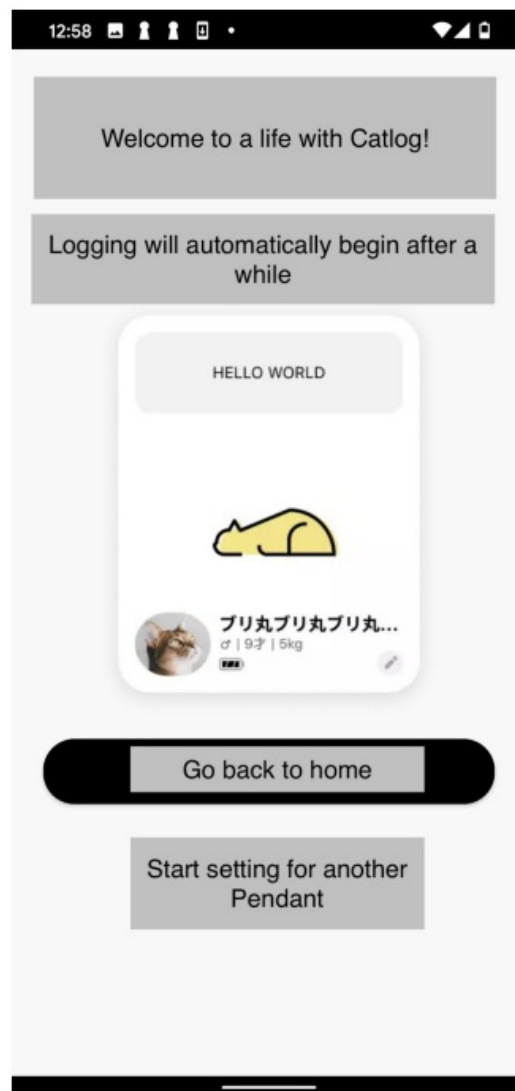
Add later

- 
7. The app will ask users to place the Catlog Home in a room. For testing purposes, you do not have to move Catlog Home if not necessary. Please keep in mind that Catlog Home must be powered on (connected to a power source) at all times for Catlog Pendant to send data to Home via BLE. When you are ready, press the “OK” button and proceed.

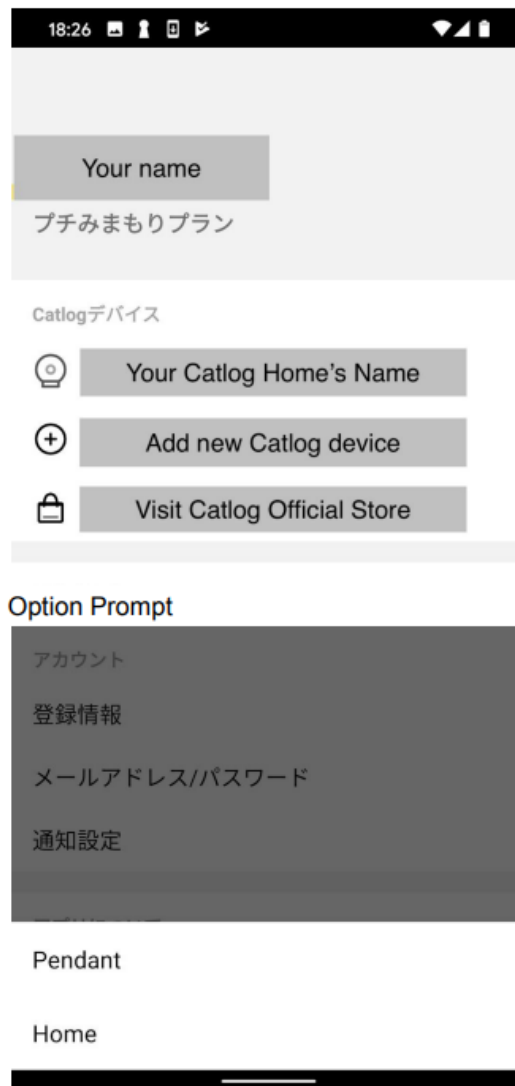


8. When this screen is shown, the setup flow is completed. Please press the “Go back to home” button. Catlog Pendant may take a little while to start logging and sending data to Catlog Home. Also, please make sure to take the Catlog Pendant off the Catlog Home for it to start sending data. When you first set up Pendant, it may not have enough battery to start working. If so, please leave the Pendant on the Catlog Home for about 4 hours to fully charge the battery. The app will send you a notification if it is low on battery, and when the battery is full.



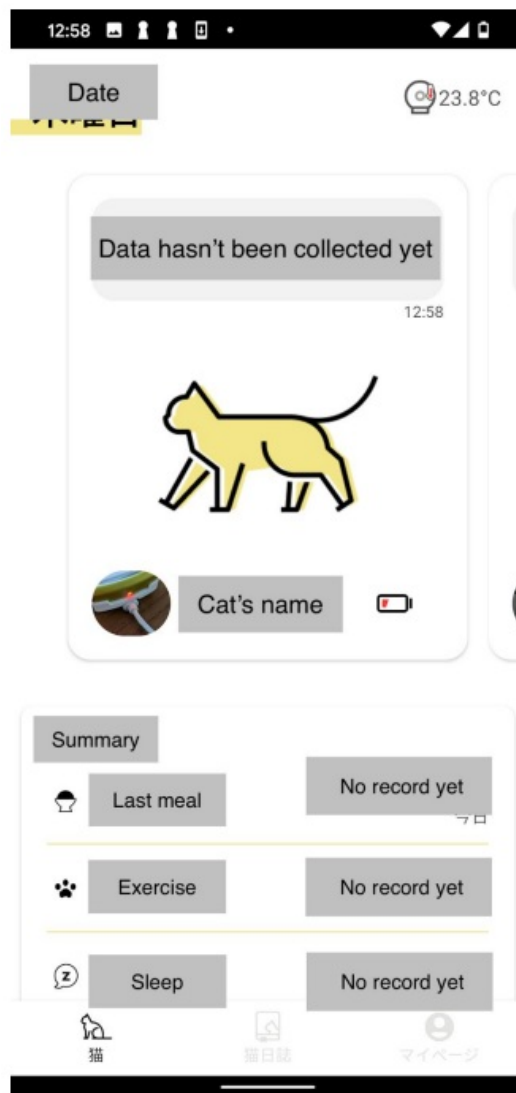


9. If you have already set up Catlog Home, you will need to start the setup process from My Page. Go to My Page and select “Add Catlog device.” A prompt will be shown below. Choose “Pendant” and proceed from step 2.



## Other app screens

1. The screen you will see when you finish setting up for Catlog Pendant. This is the home screen for the app.



## Battery Charging

If the Pendant has a low battery, leave it on Catlog Home for about 4 hours for a full charge. The app will notify you of the battery status.

### FCC Caution.

This device complies with part 15 of the FCC Rules. Operation is subject to the following two conditions:

1. This device may not cause harmful interference, and this device must accept any interference received, including interference that may cause undesired operation.

Any Changes or modifications not expressly approved by the party responsible for compliance could void the user's authority to operate the equipment.

**Note:** This equipment has been tested and found to comply with the limits for a Class B digital device, under part 15 of the FCC Rules. These limits are designed to provide

reasonable protection against harmful interference in a residential installation. This equipment generates and can radiate radio frequency energy and, if not installed and used according to the instructions, may cause harmful interference to radio communications. However, there is no guarantee that interference will not occur in a particular installation. If this equipment does cause harmful interference to radio or television reception, which can be determined by turning the equipment off and on, the user is encouraged to try to correct the interference by one or more of the following measures:

- Reorient or relocate the receiving antenna.
- Increase the separation between the equipment and receiver.
- Connect the equipment to an outlet on a circuit different from that to which the receiver is connected.
- Consult the dealer or an experienced radio/TV technician for help.

#### **FCC Radiation Exposure Statement:**

The device has been evaluated to meet the general RF exposure requirements. The device can be used in portable exposure conditions without restriction.

#### **FAQs**

##### **Q: What should I do if the Pendant cannot be detected?**

A: If detection fails, ensure both the Pendant and Catlog Home are set up correctly. Contact support for assistance.

##### **Q: How do I know if the battery is low?**

A: The app will notify you when the battery is low, prompting you to charge the Pendant.

## **Documents / Resources**



## [Catlog CP02 Digital Security Locker \[pdf\]](#) User Guide

CP02, 2AXY2-CP02, 2AXY2CP02, CP02 Digital Security Locker, CP02, Digital Security Locker, Security Locker, Locker

## References

- [User Manual](#)

📁 Catlog

🔖 2AXY2-CP02, 2AXY2CP02, Catlog, CP02, CP02 Digital Security Locker, Digital Security Locker, Locker, Security Locker

---

## Leave a comment

Your email address will not be published. Required fields are marked \*

Comment \*

Name

Email

Website

☐ Save my name, email, and website in this browser for the next time I comment.

**Post Comment**

## Search:

e.g. whirlpool wrf535swhz

**Search**

[Manuals+](#) | [Upload](#) | [Deep Search](#) | [Privacy Policy](#) | [@manuals.plus](#) | [YouTube](#)

This website is an independent publication and is neither affiliated with nor endorsed by any of the trademark owners. The "Bluetooth®" word mark and logos are registered trademarks owned by Bluetooth SIG, Inc. The "Wi-Fi®" word mark and logos are registered trademarks owned by the Wi-Fi Alliance. Any use of these marks on this website does not imply any affiliation with or endorsement.