



# SDMA Test Catalyst Total T4 Test User Guide

[Home](#) » [catalyst](#) » SDMA Test Catalyst Total T4 Test User Guide 

## Contents

- [1 SDMA Test Catalyst Total T4 Test](#)
- [2 Product Information](#)
- [3 Storage and handling requirements](#)
- [4 Just load and go](#)
- [5 Frequently asked questions](#)
- [6 Documents / Resources](#)

# SDMA

**SDMA Test Catalyst Total T4 Test**



## Product Information

The Catalyst\* SDMA Test and Catalyst\* Total T4 Test are diagnostic tests used to assess specific markers in animal samples. The Catalyst One and Catalyst Dx are analyzers designed to perform these tests efficiently.

## Storage and Handling Requirements

The Catalyst SDMA Test slides must be stored at room temperature, while the Catalyst Total T4 Test slides should be stored in a refrigerator or freezer. The accompanying reagents should also be stored according to their respective requirements.

## Frequently Asked Questions

- Question: Do I need to run anything with the SDMA or TT4 slide(s)?  
Answer: The SDMA test can be run alone as a single slide. However, when running the TT4 test, the slide must be accompanied by the appropriate reagent.
- Question: What sample types can be run on the SDMA or TT4 test(s)? Can I run previously frozen samples on the SDMA or TT4 test(s)? Which species have been validated for the SDMA or TT4 test(s) and what are the numerical results? Answer: The compatible sample types for both tests include serum, lithium heparin plasma, and whole blood using the Catalyst Lithium Heparin Whole Blood Separator. Previously frozen samples should not be used for the Catalyst SDMA Test or both the Catalyst SDMA and Catalyst Total T4 tests. The validated species and their corresponding numerical results can be found in the product documentation.
- Question: Can SDMA or TT4 be run with other slides?  
Answer: Yes, SDMA and TT4 slides can be run with other slides. There is no specific order in which they need to be loaded.
- Question: What is the run time for the SDMA or TT4 test(s)?  
Answer: The SDMA test results are available approximately 8 minutes after the start of the run, while the TT4

test results are available approximately 15 minutes after the start of the run.

- Question: Is it okay to dilute samples that are undergoing SDMA or TT4 testing?

Answer: No, IDEXX does not support the use of diluted samples when running the Catalyst SDMA Test or Catalyst Total T4 Test.

- Question: How often can SDMA or TT4 tests be left at room temperature and then returned to the refrigerator/freezer?

Answer: SDMA tests can be left at room temperature and returned to the freezer up to 5 times as long as they remain unopened. TT4 tests can be returned to the refrigerator after being at room temperature, as long as they are unopened.

- Question: What if the SDMA or TT4 tests are stored improperly?

Answer: Any SDMA or TT4 tests that have been stored improperly should be discarded to ensure accurate results.

- Question: Which quality control should I use to monitor the performance of the SDMA and TT4 tests?

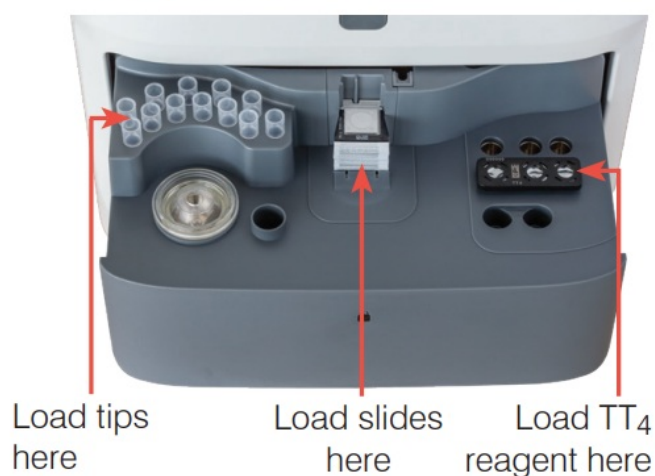
Answer: VetTrol Control is designed for use in monitoring the accuracy of the Catalyst Dx and Catalyst One analyzers. IDEXX also recommends monthly analyzer maintenance to ensure accurate results.

## Storage and handling requirements

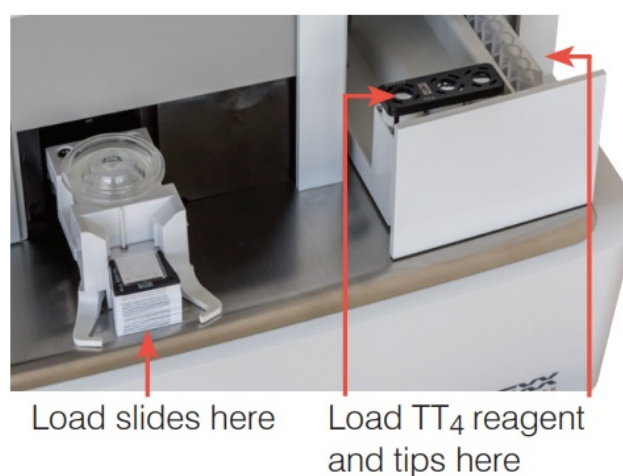
- Catalyst\* SDMA Test: Store in the freezer (do not store in the freezer door).
- Catalyst\* Total T4 Test: Store in the refrigerator. Do not freeze.
- No warming required—run directly from the refrigerator (TT4) or freezer (SDMA).
- SDMA and TT4 tests can be stored at room temperature for up to 8 hours. After 8 hours, store SDMA tests in the freezer and TT4 tests in the refrigerator.
- Recommended sample volume:
  - Whole blood: 600–800  $\mu\text{L}$
  - Serum/plasma: 100  $\mu\text{L}$  (65  $\mu\text{L}$  minimum; 300  $\mu\text{L}$  if running with other slides)

## Just load and go

### Catalyst One



### Catalyst Dx



## Frequently asked questions

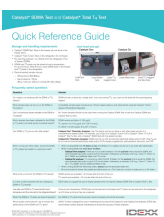
Question	Answer
Do I need to run anything with the SDMA or TT <sub>4</sub> slide(s)?	SDMA can be run alone as a single slide. If you are running TT <sub>4</sub> , you must run the slide with the accompanying reagent.
What sample types can be run on the SDMA or TT <sub>4</sub> test(s)?	Compatible sample types include serum, lithium heparin plasma, and whole blood using the Catalyst* Lithium Heparin Whole Blood Separator.
Can I run previously frozen samples on the SDMA or TT <sub>4</sub> test(s)?	No, frozen samples should not be used when running the Catalyst SDMA Test or both the Catalyst SDMA and Catalyst Total T <sub>4</sub> tests.
Which species have been validated for the SDMA or TT <sub>4</sub> test(s) and what are the numerical results?	SDMA canine and feline: 0–100 µg/dL TT <sub>4</sub> canine: 0.5–10.0 µg/dL (6.4–128.7 nmol/L) TT <sub>4</sub> feline: 0.5–20.0 µg/dL (6.4–257.4 nmol/L)
Can SDMA or TT <sub>4</sub> be run with other slides?	<b>Catalyst One* Chemistry Analyser:</b> Yes! The test(s) can be run alone or with other slides as part of a comprehensive patient profile. For example, you could run a Catalyst* Lyte 4 CLIP, a Catalyst* Chem 17 CLIP, a Catalyst* Total T <sub>4</sub> Test, and a Catalyst* SDMA Test with one patient sample. <b>Catalyst Dx* Chemistry Analyser:</b> SDMA can be run with all chemistry/electrolyte slides and/or CLIPs. Total T <sub>4</sub> can be run with all chemistry/electrolyte slides and/or CLIPs except progesterone, phenobarbital, bile acids, and CRP.
When running with other slides, should the SDMA or TT <sub>4</sub> slide(s) be loaded in a particular order?	<ul style="list-style-type: none"> <li>When running SDMA with <b>18 slides or less</b>, the SDMA or TT<sub>4</sub> slide(s) can be run in any order after electrolytes.</li> <li>When running SDMA with <b>more than 18 slides</b>: <ul style="list-style-type: none"> <li><b>Catalyst One analyser:</b> There are no run order limitations. For the <b>quickest</b> time to results for SDMA, the recommended load order is Lyte 4 CLIP on the bottom, followed by a chemistry CLIP (e.g., Chem 17, Chem 10, etc.), SDMA, any additional slides, and TT<sub>4</sub> on top.</li> <li><b>Catalyst Dx analyser:</b> TT<sub>4</sub> must be run within the first 18 slides. For the <b>quickest</b> time to results for SDMA, the recommended load order is Lyte 4 CLIP on the bottom, followed by a chemistry CLIP (e.g., Chem 17, Chem 10, etc.), TT<sub>4</sub>, SDMA, and any additional slides on top.</li> </ul> </li> <li>When running SDMA with electrolyte slides, <b>always</b> load the electrolyte slides first.</li> <li>Be sure to load the drawer with pipette tips before every run. (The maximum number of slides per run is 25 slides.)</li> </ul>
What is the run time for the SDMA or TT <sub>4</sub> test(s)?	SDMA results are available ~8 minutes after the start of the run. TT <sub>4</sub> results are available ~15 minutes after the start of the run.
Is it okay to dilute samples that are undergoing SDMA or TT <sub>4</sub> testing?	IDEXX does not support the use of diluted samples when running the Catalyst SDMA Test or Catalyst Total T <sub>4</sub> Test.
How often can SDMA or TT <sub>4</sub> tests be left at room temperature and then returned to the refrigerator/freezer?	Once at room temperature, SDMA tests can be returned to the freezer and TT <sub>4</sub> tests can be returned to the refrigerator up to 5 times as long as they are unopened.
What if the SDMA or TT <sub>4</sub> tests are stored improperly?	Any SDMA or TT <sub>4</sub> tests that have been stored improperly should be discarded.
Which quality control should I use to monitor the performance of the SDMA and TT <sub>4</sub> tests?	VetTrol* Control is designed for use in monitoring the accuracy of the Catalyst Dx and Catalyst One analysers. IDEXX also recommends monthly analyser maintenance to ensure the accuracy of these analysers.

© 2022 IDEXX Laboratories, Inc. All rights reserved.

06-0038931-00

Catalyst, Catalyst Dx, Catalyst One, and VetTrol are trademarks or registered trademarks of IDEXX Laboratories, Inc. or its affiliates in the United States and/or other countries.

## Documents / Resources

	<p><a href="#">Catalyst SDMA Test Catalyst Total T4 Test</a> [pdf] User Guide</p> <p>SDMA Test Catalyst Total T4 Test, SDMA, Test Catalyst Total T4 Test, Catalyst Total T4 Test, Total T4 Test, T4 Test</p>
---	--