



CASTLES TECHNOLOGY SATURN1000 S1F2 MOB POS Terminal User Manual

[Home](#) » [CASTLES TECHNOLOGY](#) » CASTLES TECHNOLOGY SATURN1000 S1F2 MOB POS Terminal User Manual 



WARNING

Information in this document is subject to change without prior notice.

No part of this publication may be reproduced, transmitted, stored in a retrieval system, nor translated into any human or computer language, in any form or by any means, electronic, mechanical, magnetic, optical, chemical, manual, or otherwise, without the prior written permission of Castles Technology Co., Ltd.

All trademarks mentioned are proprietary to their respective owners.

Revision History

Version	Date	Descriptions	Author
1.0	2021.12.23	Initial creation.	John
1.1	2021.12.21	1. Update cover from S1 F2 to S1 F2 MOB 2. Add 5G caution for FCC 3. Add 5G caution for IC 4. Update UL Adapter caution	John

Contents

- [1 Introduction](#)
- [2 Hardware Setup](#)
 - [2.1 Parts of the Terminal](#)
 - [2.2 Insert Battery](#)
 - [2.3 Insert SAM Card](#)
 - [2.4 Insert GSM SIM Card](#)
 - [2.5 Insert Micro SD Card](#)
 - [2.6 Insert Paper Roll](#)
- [3 Appendix](#)
 - [3.1 FCC](#)
 - [3.2 IC](#)
 - [3.3 UL / IEC 62368-1](#)
- [4 Documents / Resources](#)
- [5 Related Posts](#)

Introduction

This document provides a guideline for operating and configuring Castles SATURN1000 terminal. The scope of this document includes setting up the terminal, basic operation, application lifecycle, and some advanced features.

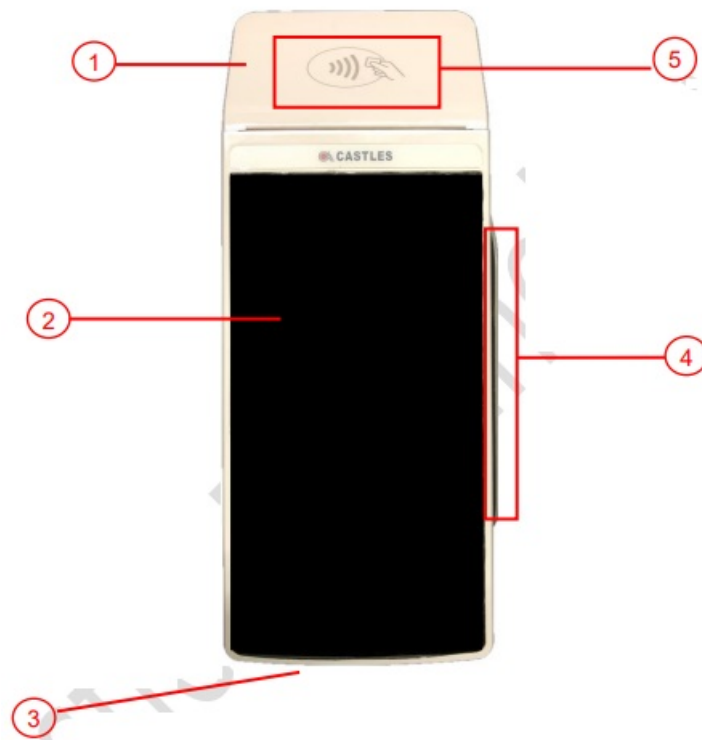
Regulatory instruction of usage

- Before using the terminal, please check has it been disassembled, modified, or showed an abnormal situation. If yes, please do not use it.
- Please stay away from strong electromagnetic waves.
(Example) Microwave ovens, magnets, shoplifting prevention devices, high-voltage wires, automatic doors, communication antennas, etc.
- Condensation can occur when moving from a cold place to a warm place. If condensation occurs, do not use the unit until the connected water droplets evaporate.
- Static electricity may occur in some places (such as where you use a carpet).
- Please do not leave it in the sun for a long time.
- Please operate the unit carefully as it is a precision instrument. Do not apply impact, drop or heavy objects on top of the unit.
- Do not attach dust, oil, etc. to a part of the power terminal. Also, please do not scratch.

Hardware Setup

Parts of the Terminal

Front



1. Paper Roll Box
2. Magnetic Stripe Reader
3. Contactless Card Landing Zone
4. LCD Display (5.5")
5. Smart Card Reader

Rear

Without Barcode Scanner



With Barcode Scanner



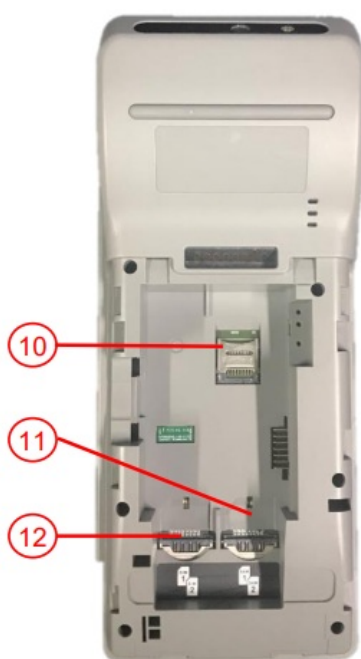
- 6. Rechargeable battery cover
- 7. The Connector of the charger
- 8. Product label
- 9. Speaker



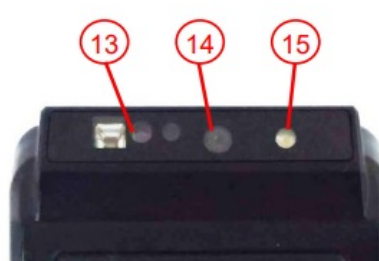
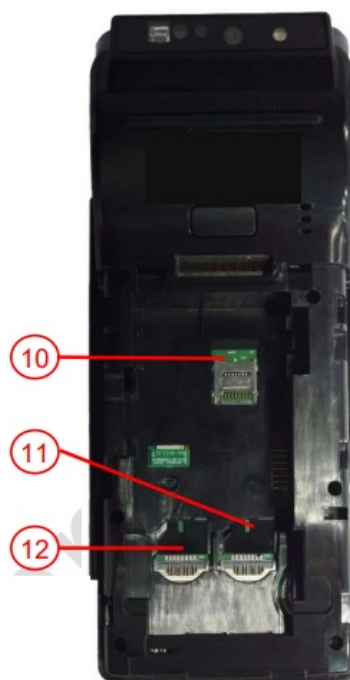
SATURN1000
Rechargeable Battery

Rear

Without Barcode Scanner



With Barcode Scanner



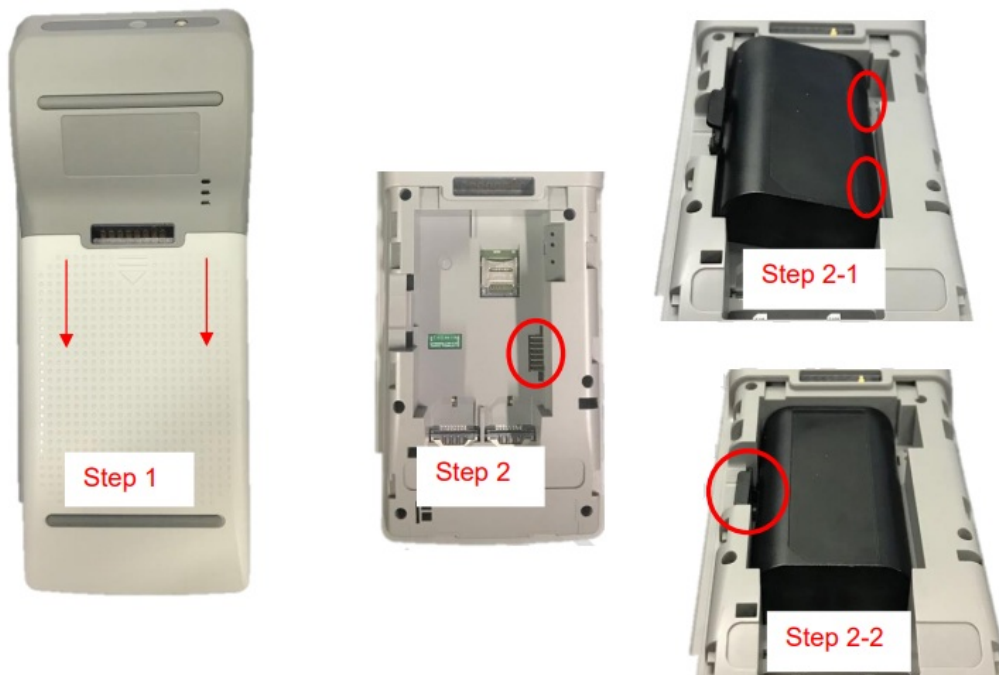
- 10. Micro SD Card Slot
- 11. SAM slots 1-2
- 12. GSM SIM card slots 1-2
- 13. Barcode Scanner
- 14. Camera
- 15. Photo-flash

Left side



- 16. Power Button
- 17. DC Jack
- 18. USB Type C slot
- 19. Headphone Jack
- 20. LED indicator
 - Greenlight: Battery fully charged
 - Orange light: Battery charging function activated
- 21. Microphone

Insert Battery



Step 1: Slide down and remove the battery cover.

Step 2: Insert the battery into the compartment.

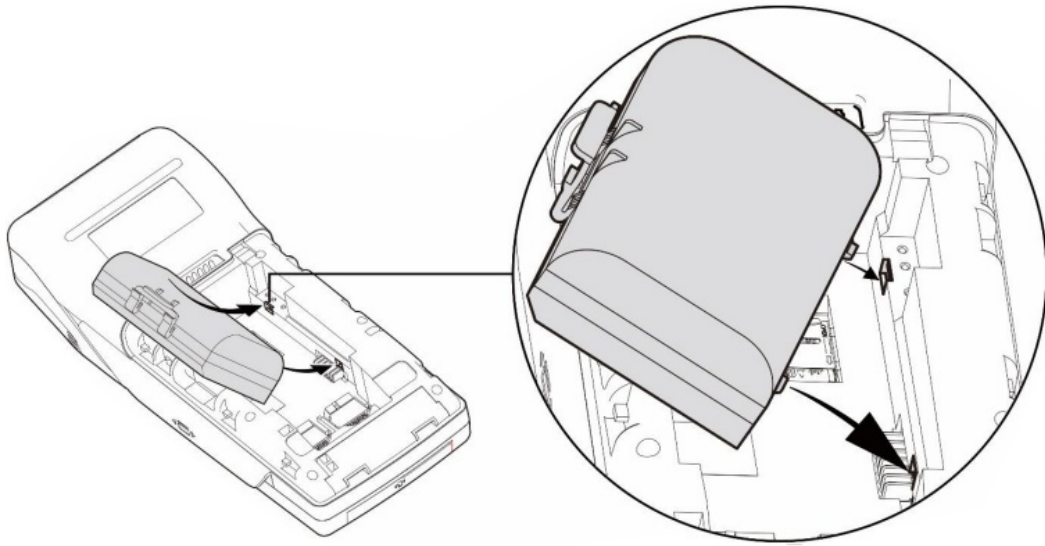
Step 2-1: Install the battery to the contact point(Make sure the pin is inside the slot.)

Step 2-2: Press down the battery.

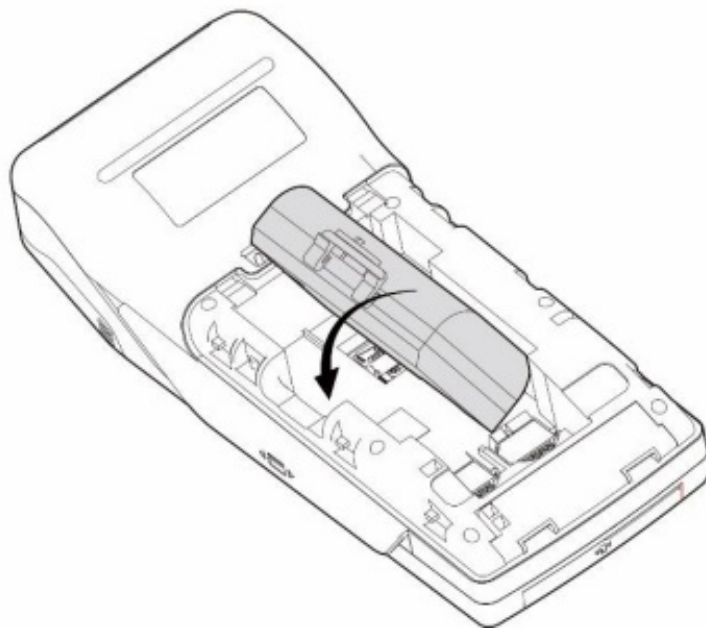
Step 3: Reverse the operation of step 1 to install the battery cover.

Note: Please confirm the battery is installed before powering on the terminal.

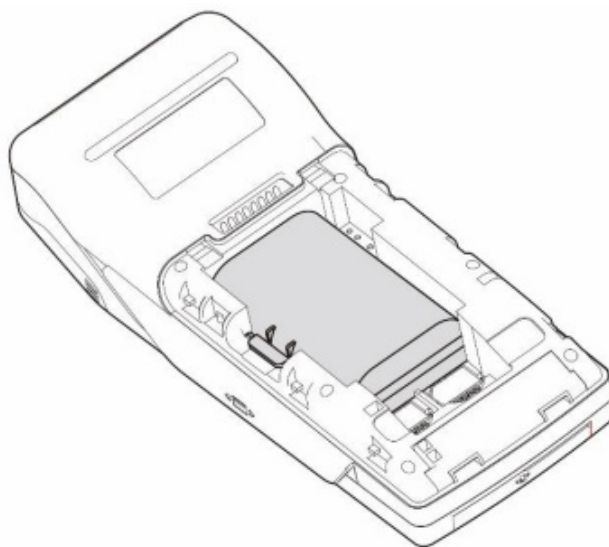
Step 1 Insert the square latch on the right side of the battery into the positioning hole.



Step 2 Rotate the battery to the position.



Step 3 Complete the battery installation.



Insert SAM Card



Step 1: Remove battery cover and battery

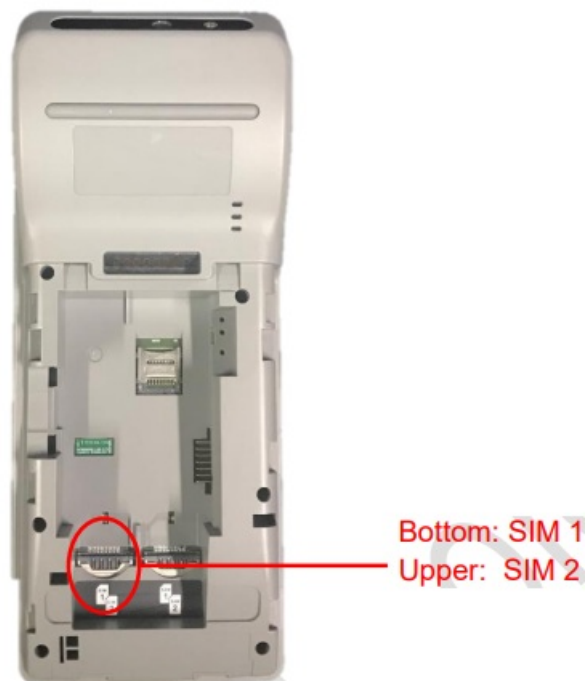
Step 2: Insert the SAM card into the desired slot.



SAM 1 & 2: Gold contact is on the lower side of the card and facing down.

Step 3: Reverse the operation of step 1 to install the battery cover.

Insert GSM SIM Card



Step 1: Slide down to remove the battery cover/back cover.

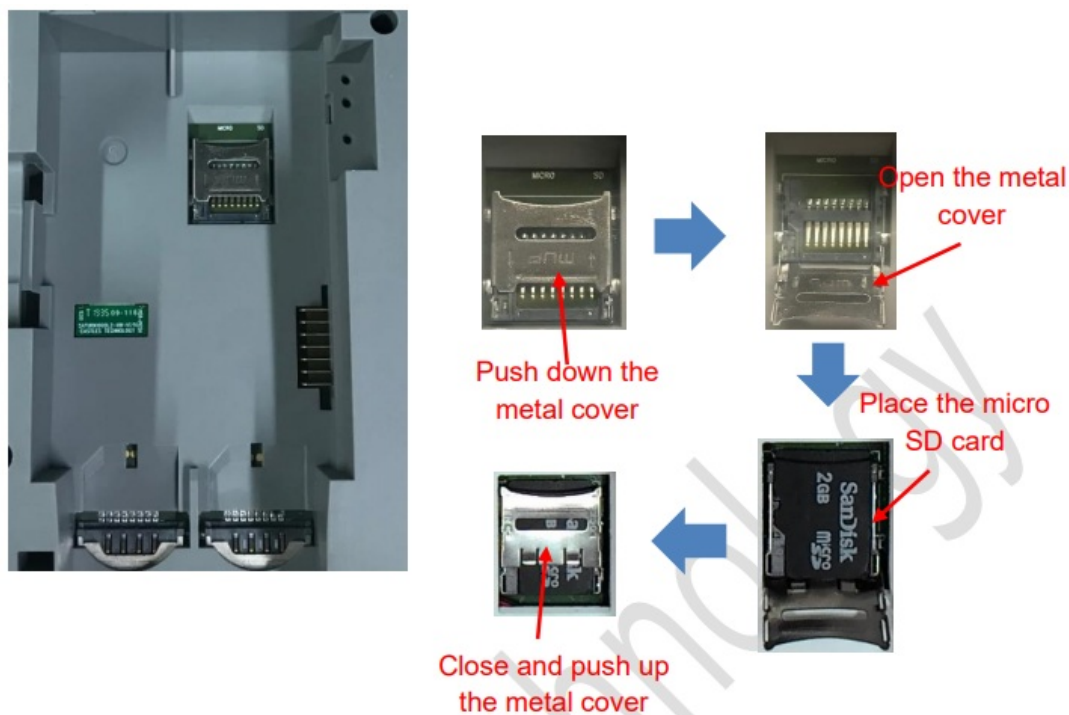
Step 2: Open the SIM socket and insert the GSM SIM card into the desired slot.



SIM 1 & 2: Gold contact is on the lower side of the card and facing down.

Step 3: Reverse the operation of step 1 to install the battery cover.

Insert Micro SD Card



- Step 1: Slide down to remove the battery cover/back cover.
Step 2: Place the Micro SD memory card.
Step 3: Reverse the operation of step 1 to install the battery cover.

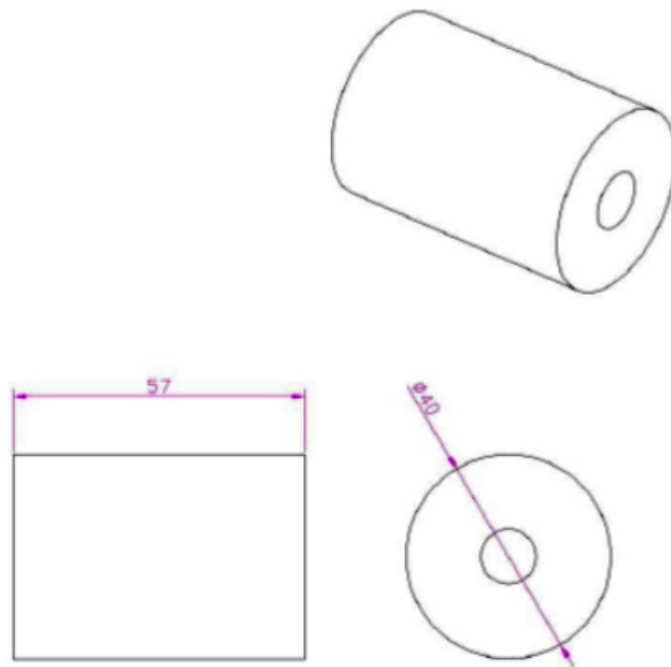
Insert Paper Roll



- Step 1: Pull up the paper roll box handle.
Step 2: Open the paper roll cover gently.
Step 3: Insert paper roll in the direction shown.

Paper specification

Width: 57mm
Outside diameter: 40mm



Appendix

FCC

Federal Communication Commission Interference Statement

This device complies with Part 15 of the FCC Rules. Operation is subject to the following two conditions: (1) This device may not cause harmful interference, and (2) this device must accept any interference received, including interference that may cause undesired operation.

This equipment has been tested and found to comply with the limits for a Class B digital device, pursuant to Part 15 of the FCC Rules. These limits are designed to provide reasonable protection against harmful interference in a residential installation. This equipment generates, uses and can radiate radio frequency energy and, if not installed and used in accordance with the instructions, may cause harmful interference to radio communications. However, there is no guarantee that interference will not occur in a particular installation. If this equipment does cause harmful interference to radio or television reception, which can be determined by turning the equipment off and on, the user is encouraged to try to correct the interference by one of the following measures:

- Reorient or relocate the receiving antenna.
- Increase the separation between the equipment and receiver.
- Connect the equipment into an outlet on a circuit different from that to which the receiver is connected.
- Consult the dealer or an experienced radio/TV technician for help.

FCC Caution:

- Any changes or modifications not expressly approved by the party responsible for compliance could void the user's authority to operate this equipment.
- This transmitter must not be co-located or operating in conjunction with any other antenna or transmitter.

Radiation Exposure Statement:

The product complies with the FCC portable RF exposure limit set forth for an uncontrolled environment and is safe for intended operation as described in this manual. Further RF exposure reduction can be achieved if the product can be kept as far as possible from the user body or set the device to lower output power if such a function is available.

Note: The country code selection is for non-US models only and is not available to all US models. Per FCC regulation, all WiFi products marketed in the US must be fixed to US operation channels only. Operation in the band 5150-5250 MHz is only for indoor use to reduce the potential for harmful interference to co-channel mobile satellite systems.

IC

Industry Canada statement

This device complies with ISED's license-exempt RSS. Operation is subject to the following two conditions: (1) This device may not cause harmful interference, and (2) this device must accept any interference received, including interference that may cause undesired operation.

Radiation Exposure Statement:

The product complies with the Canada portable RF exposure limit set forth for an uncontrolled environment and is safe for intended operation as described in this manual. Further RF exposure reduction can be achieved if the product can be kept as far as possible from the user body or set the device to lower output power if such a function is available.

Caution :

- (i) the device for operation in the band 5150-5250 MHz is only for indoor use to reduce the potential for harmful interference to co-channel mobile satellite systems;
- (ii) where applicable, antenna type(s), antenna models(s), and worst-case tilt angle(s) necessary to remain compliant with the e.i.r.p. elevation mask requirement set forth in section 6.2.2.3 shall be clearly indicated.

UL / IEC 62368-1

- Battery

EUT highest specified charging temperature: 45°C (+3°C/-3°C); lowest specified charging temperature: 0°C (+3°C/-3°C)

- The product's operation temperature is at 0-40°C.

- Input Rating 5V/2A (supplied by Adapter)

- Warning:

The power cord shall be connected to a socket-outlet with earthing connection.

- Warning:

Risk of explosion if the battery is replaced by an incorrect type. Dispose of the expended battery in accordance with local disposal regulations.

- Warning:

This product is intended to be supplied by a Listed Power Adapter "L.P.S." (Or "Limited Power Source") and is rated at 5 Vdc, 2 A min., Tma = 40 degrees C.

Version 1.2

Mar. 2022

CRT-S1-04-02-V1.2-CB-FCC-IC-UL-cUL



Castles Technology Co., Ltd.

6F, No. 207-5, Sec. 3, Beixin Rd., Xindian District,
New Taipei City 23143, Taiwan R.O.C.

<http://www.castech.com.tw>

Castles Technology Co., Ltd.

Documents / Resources

	<p>CASTLES TECHNOLOGY SATURN1000 S1F2 MOB POS Terminal [pdf] User Manual S1F2MOB001, WIYS1F2MOB001, SATURN1000 S1F2 MOB POS Terminal, SATURN1000, S1 F2 MOB POS Terminal</p>
	<p>Castles Technology SATURN1000 S1F2 MOB POS Terminal [pdf] User Manual SLM500QA, WIYSLM500QA, SATURN1000 S1F2 MOB POS Terminal, S1F2 MOB POS Termi nal</p>