



CASTLES TECHNOLOGY S1E2 POS Terminal User Manual

[Home](#) » [CASTLES TECHNOLOGY](#) » CASTLES TECHNOLOGY S1E2 POS Terminal User Manual 



CASTLES TECHNOLOGY

TECHNOLOGY S1E2 POS Terminal User Manual

Castles Technology Co., Ltd.

6F, No. 207-5, Sec. 3, Beixin Rd., Xindian District,
New Taipei City 23143, Taiwan R.O.C.

<http://www.castech.com.tw>

Contents

- [1 WARNING](#)
- [2 Regulatory instruction of usage](#)
- [3 Hardware Setup](#)
- [4 Appendix](#)
- [5 Documents / Resources](#)
- [6 Related Posts](#)

WARNING

Information in this document is subject to change without prior notice.

No part of this publication may be reproduced, transmitted, stored in a retrieval system, nor translated into any human or computer language, in any form or by any means, electronic, mechanical, magnetic, optical, chemical, manual, or otherwise, without the prior written permission of Castles Technology Co., Ltd.

All trademarks mentioned are proprietary to their respective owners.

Revision History

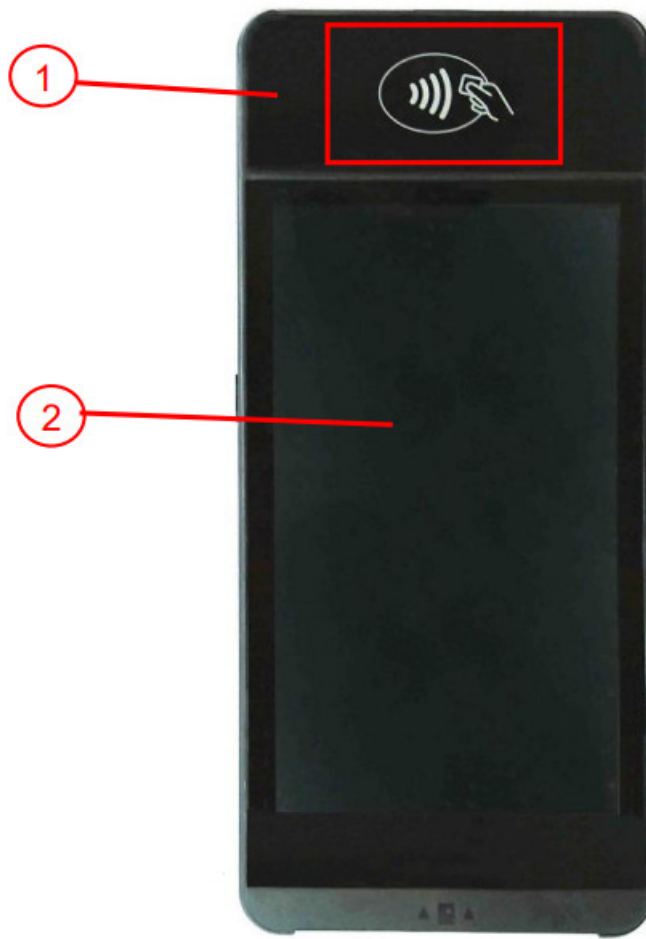
Version	Date	Descriptions	Author
1.0	Sep.12.2022	Initial creation.	Dustin
1.	Oct. 27. 2022	1.Add note on page 10. 2.Add SAM & SIM descriptions on page 11&12.	Dustin
1.	Nov. 22. 2022	1.Modify description of FCC on Page 14. 2.Modify description of IC on Page 15.	Dustin

Regulatory instruction of usage

- Before using the terminal, please check the does it has been disassembled, modified, or happened the abnormal situation. If yes, please do not continue to use.
- Please stay away from strong electromagnetic waves.
(Example) Microwave ovens, magnets, shoplifting prevention devices, high-voltage wires, automatic doors, communication antennas, etc.
- Condensation can occur when moving from a cold place to a warm place. If condensation occurs, do not use the unit until the connected water droplets evaporate.
- Static electricity may occur in some places (such as where you are using a carpet).
- Please do not leave it in the sun for a long time.
- Please operate the unit carefully as it is a precision instrument. Do not apply impact, drop or heavy objects on top of the unit.
- Do not attach dust, oil, etc. to a part of the power terminal. Also, please do not scratch.

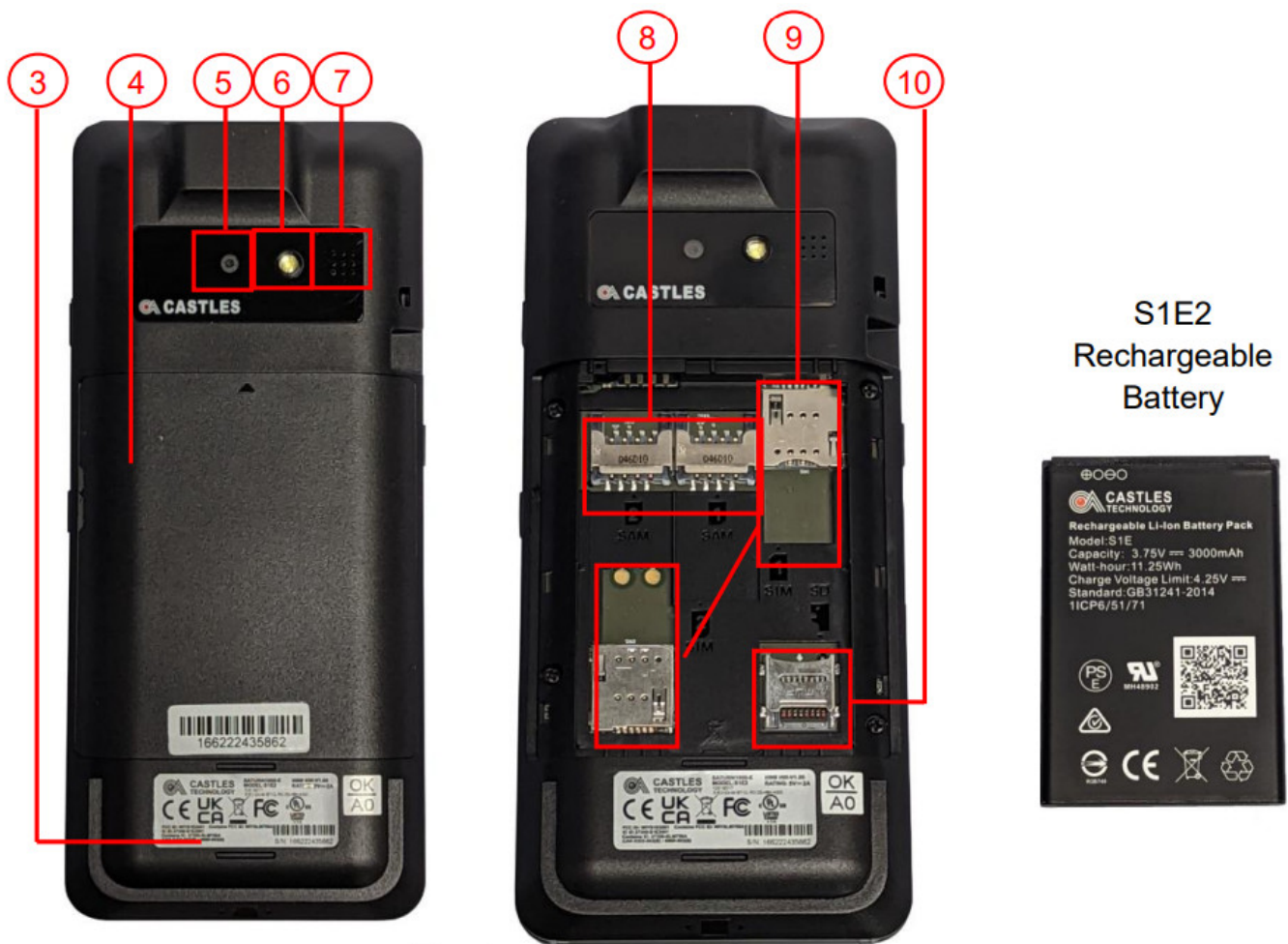
Hardware Setup

2.1. Parts of the Terminal



- 1. Contactless Card Landing Zone
- 2. LCD Display (5")

Rear



3. Product Label
4. Rechargeable Battery Cover
5. Rear Camera
6. Photo-Flash

7. Speaker
8. SAM Slots 1-2
9. GSM SIM Card Slots 1-2
10. Micro SD Card Slot

Top



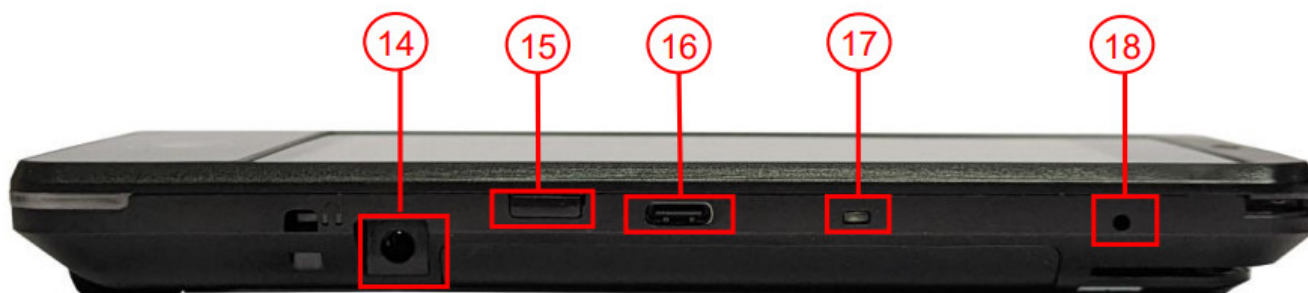
11. Barcode Scanner



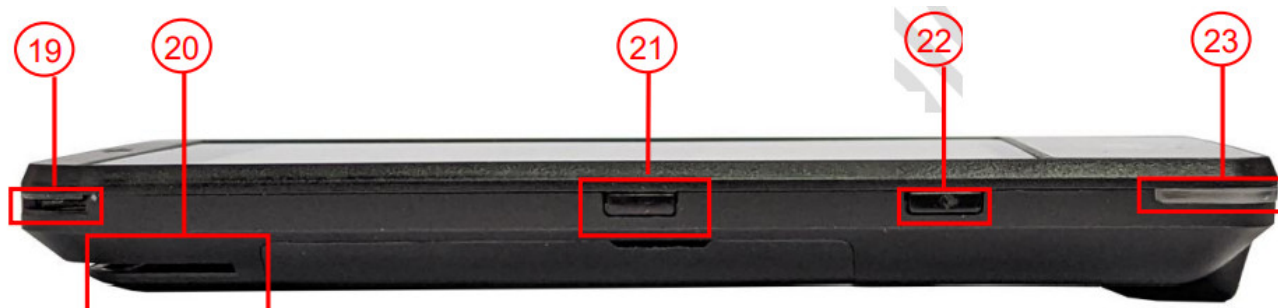
12. Smart Card Reader

13. Magnetic Stripe Reader

Left side



Right side



- 14. Headphone Jack
- 15. Barcode Scan Button
- 16. USB Type C Slot
- 17. LED Indicator

Green Light: External power source connecting and battery is full.

Red Light: Battery charging function activated

- 18. Microphone
- 19. Charger Pin
- 20. Magnetic Stripe Reader
- 21. Barcode Scan Button
- 22. Power Button
- 23. Contactless LED Indicator

2.2. Insert Battery



Step 1: Remove the battery cover.

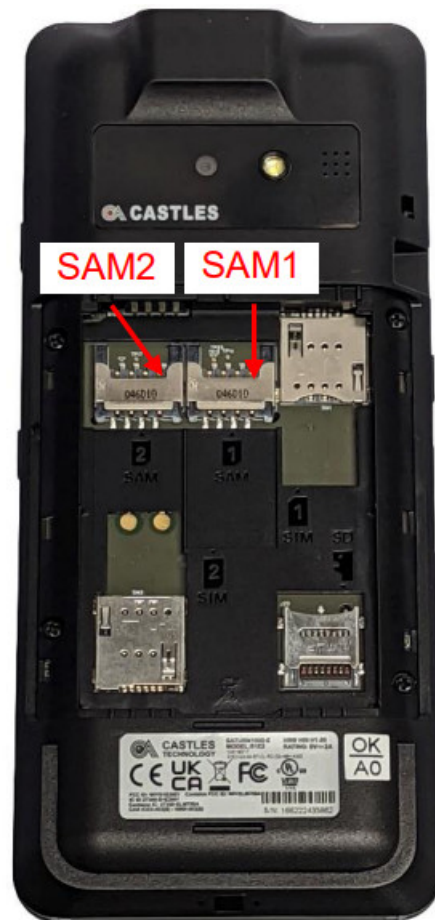
Step 2: Insert the battery into the compartment

Step 3: Reverse the operation of step 1 to install the battery cover.

Note 1: Please confirm the battery is installed before power on the terminal.

Note 2: Highest specified charging temperature: $45\pm3^{\circ}\text{C}$; Lowest specified charging temperature: $0\pm3^{\circ}\text{C}$.

2.3. Insert SAM Card



Step 1: Remove battery cover / back cover

Step 2: Insert SAM card into desire slot.

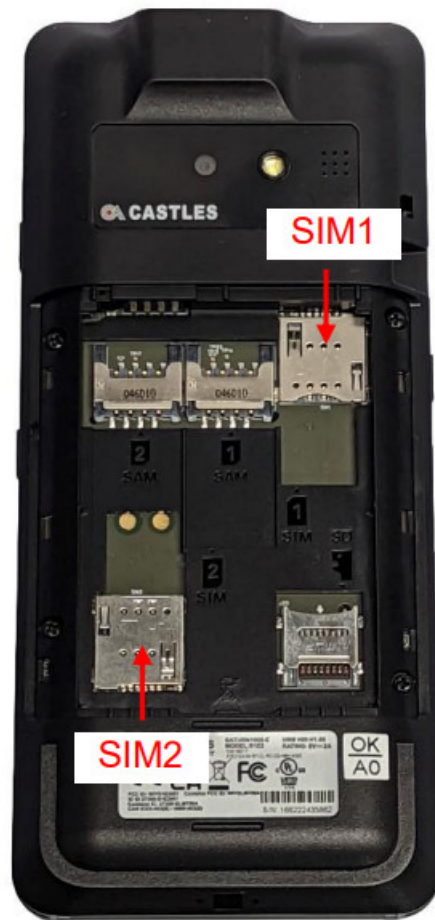


SAM 1 & 2:

Gold contact is on the upper side of the card and facing down. Step 3: Reverse the operation of step 1 to install the battery cover.

Step 3: Reverse the operation of step 1 to install the battery cover.

2.4. Insert GSM Micro SIM Card



- Step 1: Remove battery cover / back cover
 Step 2: Insert GSM Micro SIM card into desire slot.



SAM 1

Gold contact is on the upper side of the card and facing down.

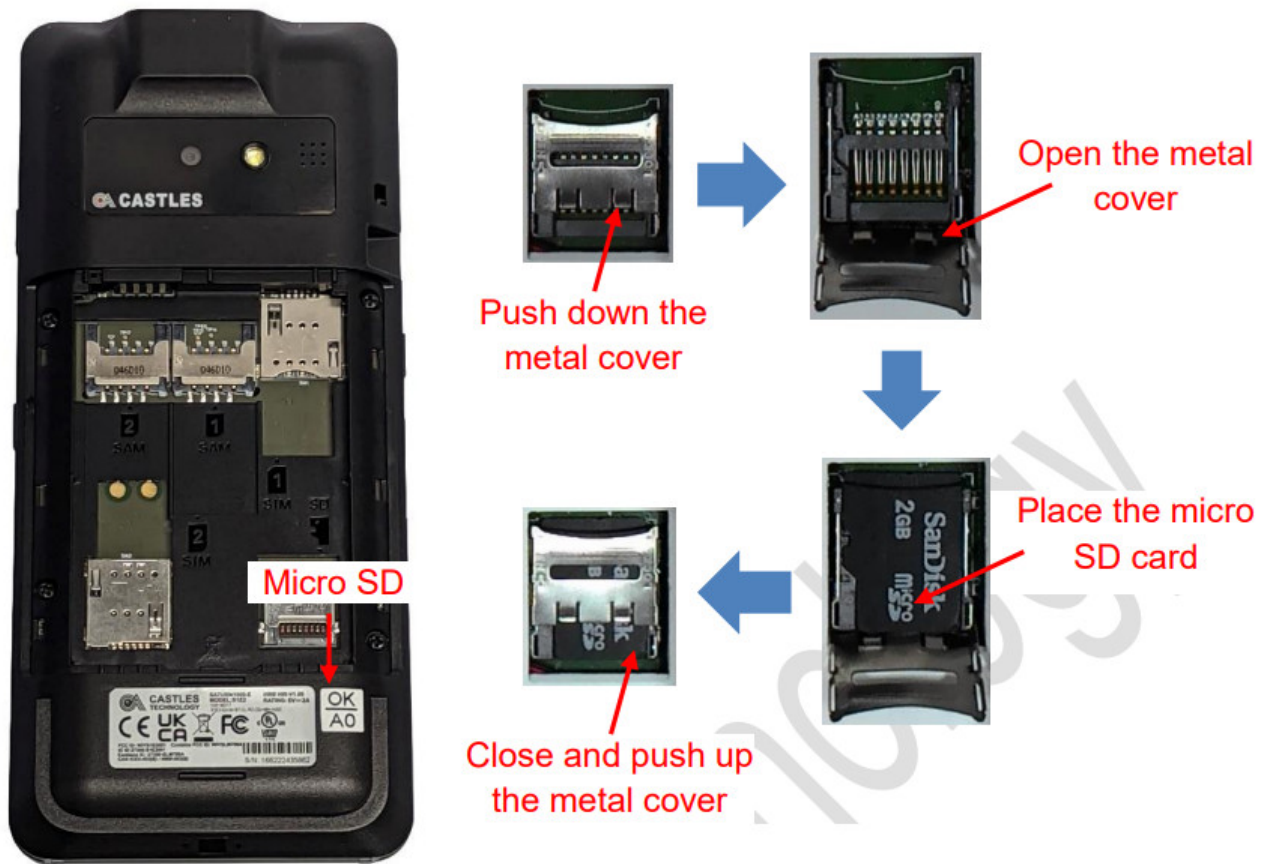


SAM 2

Gold contact is on the upper side of the card and facing down.

Step 3: Reverse the operation of step 1 to install the battery cover.

2.5. Insert Micro SD card



Step 1: Remove battery cover / back cover

Step 2: Place Micro SD memory card.

Step 3: Reverse the operation of step 1 to install the battery cover.

Appendix

3.1. FCC

Federal Communication Commission Interference Statement

This device complies with Part 15 of the FCC Rules. Operation is subject to the following two conditions: (1) This device may not cause harmful interference, and (2) this device must accept any interference received, including interference that may cause undesired operation.

This equipment has been tested and found to comply with the limits for a Class B digital device, pursuant to Part 15 of the FCC Rules. These limits are designed to provide reasonable protection against harmful interference in a residential installation. This equipment generates, uses and can radiate radio frequency energy and, if not installed and used in accordance with the instructions, may cause harmful interference to radio communications. However, there is no guarantee that interference will not occur in a particular installation. If this equipment does cause harmful interference to radio or television reception, which can be determined by turning the equipment off and on, the user is encouraged to try to correct the interference by one of the following measures:

- Reorient or relocate the receiving antenna.
- Increase the separation between the equipment and receiver.
- Connect the equipment into an outlet on a circuit different from that to which the receiver is connected.
- Consult the dealer or an experienced radio/TV technician for help.

FCC Caution:

- Any changes or modifications not expressly approved by the party responsible for compliance could void the user's authority to operate this equipment.

- This transmitter must not be co-located or operating in conjunction with any other antenna or transmitter.

Radiation Exposure Statement:

The product comply with the FCC portable RF exposure limit set forth for an uncontrolled environment and are safe for intended operation as described in this manual. The further RF exposure reduction can be achieved if the product can be kept as far as possible from the user body or set the device to lower output power if such function is available.

Note: The country code selection is for non-US model only and is not available to all US model. Per FCC regulation, all WiFi product marketed in US must fixed to US operation channels only.

3.2. IC**Industry Canada statement**

This device complies with ISED's licence-exempt RSSs. Operation is subject to the following two conditions: (1) This device may not cause harmful interference, and (2) this device must accept any interference received, including interference that may cause undesired operation.

Radiation Exposure Statement:

The product comply with the Canada portable RF exposure limit set forth for an uncontrolled environment and are safe for intended operation as described in this manual. The further RF exposure reduction can be achieved if the product can be kept as far as possible from the user body or set the device to lower output power if such function is available.

Caution :

(i) the device for operation in the band 5150-5250 MHz is only for indoor use to reduce the potential for harmful interference to co-channel mobile satellite systems;

3.3. UL/IEC 62368-1

- Warning:

Power cord shall be connected to a socket-outlet with earthing connection.

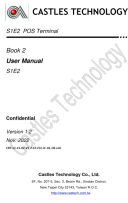

- Warning:

Risk of explosion if battery is replaced by an incorrect type. Dispose of expended battery in accordance with local disposal regulations.

- Warning:

This product is intended to be supplied by a Listed Power Adapter "L.P.S." (Or "Limited Power Source") and is rated at 5 Vdc, 2 A min., Tma = 40 degrees C.

Documents / Resources

	<p>CASTLES TECHNOLOGY S1E2 POS Terminal [pdf] User Manual SLM758A, WIYSLM758A, S1E2 POS Terminal, S1E2, POS Terminal, S1E2 POS Terminal, Terminal</p>
	<p>CASTLES TECHNOLOGY S1E2 POS Terminal [pdf] User Manual S1E2001, WIYS1E2001, S1E2 POS Terminal, S1E2, POS Terminal, Terminal</p>