



Cassida C500 Compact Coin Counter User Manual

[Home](#) » [Cassida](#) » Cassida C500 Compact Coin Counter User Manual 

Contents

- [1 Cassida C500 Compact Coin Counter](#)
- [2 Introduction](#)
- [3 Technical specifications](#)
- [4 OPERATION](#)
- [5 MAINTENANCE AND TROUBLESHOOTING](#)
- [6 WARRANTY AND CONTACT INFORMATION](#)
- [7 FREQUENTLY ASKED QUESTIONS](#)
- [8 References](#)
- [9 Related Posts](#)



Cassida C500 Compact Coin Counter



Introduction

About the Cassida C500 Compact Coin Counter

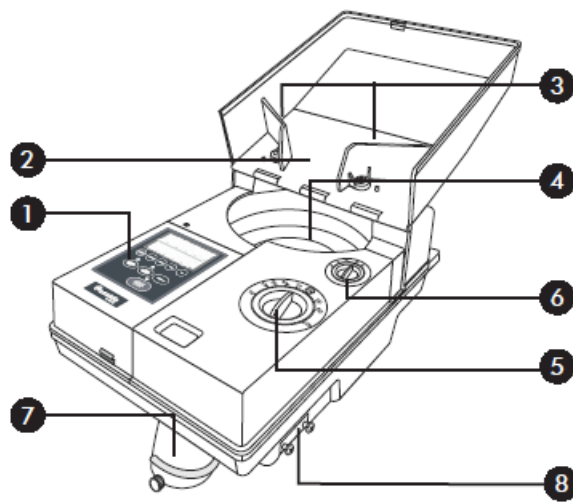
- Thank you for choosing the Cassida C500 Coin Counter. We hope that you will enjoy using the machine.
- The Cassida C500 Coin Counter is intended for counting and sorting coins or tokens at banks, retail stores, entertainment complexes, and other businesses accepting cash and coins.
- Features of the Cassida C500 include ease of operation and portable design. It is compact and has an attached handle for easy transport. The machine can count in simple counts, add or batch modes.
- The Cassida C500 is a perfect solution for fast, accurate, and reliable coin counting.

Box Contents

- Cassida C500 Coin Counter
- Power cord
- Reject coin bin
- Reject coin bag adapter
- User's manual

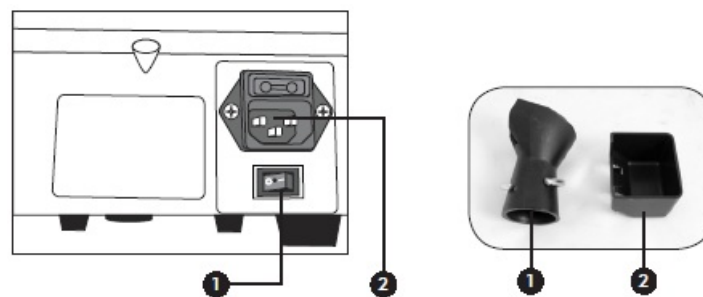
Front and Rear View

Front View:



- Control panel
- Hopper
- Coin guide arms
- Coin hopper
- Diameter adjustment knob
- Thickness adjustment knob
- Coin outlet
- Reject coin outlet

Rear View:

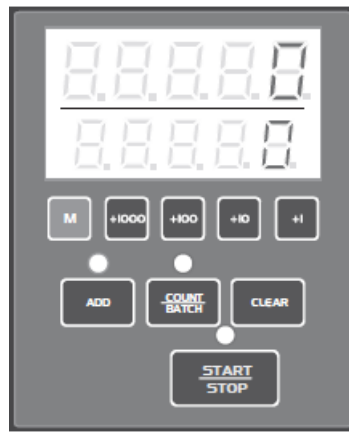











- Power switch
- Power outlet

Accessories

- Reject coin bag adapter
- Reject coin box

Keypad



	To start/stop coin counting.
	To enable or disable add mode.
	To switch between count mode and preset batch mode.
	To clear the count.
	To display last count while in add mode or the total value of coins counted from when the machine is powered on while in count mode.
	increase batch size +1
	increase batch size +10
	increase batch size +100
	increase batch size +1000

Setup

1. Attach the coin bag to the front of the machine at the coin outlet. To attach the coin bag, slide the metal ring up and fit the bag on the end of the dispenser, then slide the ring down over the fabric of the bag until it fits snug on the dispenser (see photo).
2. Make sure that the coin bag is supported to prevent the machine from tipping.
3. Attach the reject coin box at the side outlet (alternately, attach the bag adapter and bag).
4. Install the brackets provided to prop the hopper cover at an angle. Insert the brackets through handle. Gently pull back on the bracket until it locks into position (see photo).
5. Open the machine cover and position the coin guard arms open to allow coins to feed into the coin hopper.
6. Set the coin diameter and thickness to the correct settings for the coins to be counted. Refer to section 2 for operation details.
7. The machine is ready to operate.



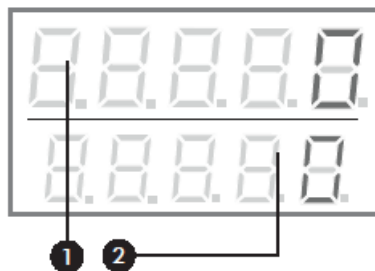
Proper attachment of a coin bag.



Correct position for hopper cover brackets

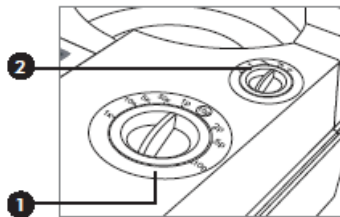
Display

1. **Upper display:** Shows the number of coins counted or total in add mode.
2. **Lower display:** Displays the preset batch size, last count, or total count.



Diameter and Thickness Adjustment Knobs

1. Diameter adjustment knob
2. Thickness adjustment knob



When counting mixed denomination coins the largest diameter coins need to be counted first. Set the diameter dial to the largest diameter coin in the hopper. Set the thickness to the thickest coin in the hopper. Note: Nickels are thicker than quarters. The largest diameter coin will be counted while all others will be sorted into the reject coin box.

After the largest diameter coins are counted load the rejected coins back into the hopper. Set the diameter dial to the largest diameter coin in the hopper. Set the thickness to the thickest coin in the hopper. Count the coins. Repeat the process until all coins have been counted and sorted.

Technical specifications

Counting speed:	Over 2000 coins/minute
Counting coin size:	Thickness: 1.0mm – 3.4mm Diameter: 14mm – 34mm
Coin hopper capacity:	Up to 4000 coins (dimes)
Batch size capability:	20-9999
Max count display:	Upper: 1-9999 Lower: 1-9999
Count modes:	Count, Batch or Add
Power supply:	AC 110V, 60 Hz
Power consumption:	60 watt
Operating temperature:	0°C-40°C (32°F-104°F)
Operating humidity:	40%-90%
Dimensions:	226mm x 381mm x 185mm (W x D x H) 8.9" x 15" x 7.3"
Weight:	7.5 kg (16.5 lbs)

Safety Notes

When using this unit, basic safety precautions should always be taken, including the following:

- Before loading coins into the hopper, please remove all paper scraps, lint, rubber bands or other foreign objects. Foreign objects can cause jamming or faulty counting.
- When using a bag to collect counted coins, place the bag on the floor or on a stand to prevent the machine from tipping over.
- Make sure the unit is installed on a flat surface. Do not operate the machine in areas with high temperature, humidity, or smoke: it may prevent it from working correctly.
- To avoid the risk of electrical shock, do not disassemble this unit. Disassembling it will expose you to high-voltage currents and other risks. Incorrect re-assembly can cause electrical shock during use.
- Only qualified technicians are authorized to perform service or repair on the C500 coin counter.
- Only use the power cord supplied with the unit. Plug the power cord into a properly grounded wall outlet. Do

not remove the ground pin from the power cord. Failure to properly ground the unit can result in severe injury or fire.

- When not using the unit for an extended period of time, remove the power plug from the wall outlet.
- Do not use near water or other liquids.
- Avoid dropping the machine as it may cause damage or malfunction.
- Do not over-fill the hopper. The coins may spill out if the hopper overflows during counting.

OPERATION

Count

- Plug the power cord into outlet on the machine back side and turn on the power switch. The machine will display «0», when it is ready for operation. Set the diameter and thickness settings for the type of coin to be counted. To start counting, press the START/STOP button. The machine will automatically stop when counting is completed.
- After stopping, the display will reset to zero when counting is resumed. To display the total number of coins counted since the machine was powered on, press and hold the M button. To clear the display, press the clear key.

Add mode

- Press the ADD key to turn on the add mode (the indicator light above the ADD key will be lit). In this mode, the last count displayed on the screen will be added to your new count. Set the diameter and thickness settings for the type of coin to be counted. Press the START/STOP key to begin counting. The upper display will show the number of counted coins. The machine will automatically stop shortly after counting all coins. If necessary, the machine can be stopped manually during the counting by pressing the START/STOP key.
- To display the total number of coins in the last count, press and hold the M button. Add mode can be used in either count or batch mode.

Batch mode

- Press the COUNT/BATCH key to choose batch mode (the light above the COUNT/BATCH key will be unlit).
- The batch amount can be set from 20 to 9999. Enter your desired batch amount by pressing the +1, +10, +100, and +1000 keys. The batch amount will be shown on the lower display after the letter "P". If the batch amount is accidentally set too high, then exit and re-enter batch mode to start over from the minimum batch amount.
- Set the diameter and thickness settings for the type of coin to be counted. Press the START/STOP key to start counting. The machine will automatically stop when the batch is finished (the letter «P» will flash on the display and the indicator light will turn off). Press the START/STOP key to start the next batch. If the last batch did not finish because the hopper was empty, load coins into the hopper and press the START/STOP key to resume.
- To display the total number of coins counted since the machine was powered on, press and hold the M key.

Counting mixed coin denominations

- When counting mixed denomination coins the largest diameter coins need to be counted first. Set the diameter

dial to the largest diameter coin in the hopper. Set the thickness to the thickest coin in the hopper. Note: Nickels are thicker than quarters. The largest diameter coin will be counted while all others will be sorted into the reject coin box.

- After the largest diameter coins are counted, load the rejected coins back into the hopper. Set the diameter dial to the largest coin in the hopper. Set the thickness to the thickest coin in the hopper. Count the coins. Repeat the process until all coins have been counted and sorted.
- **IMPORTANT:** Full bags of coins can be heavy. To avoid injury from heavy bags disconnecting from the machine and falling, use special coin bags that can stand the weight of the coins, and make sure that the coin bag rests on a supported surface.

Counting tokens or non-US denomination coins

- Before counting tokens or foreign denominations, the physical size (in millimeters) of the coins/tokens must be measured. It is recommended that the measurements be taken on several coins/tokens using a set of calipers. If the coin/token dimensions are published, those values may also be used as a starting point. Please note that used coins/tokens will be slightly thinner than new coins/tokens.
- When counting mixed-size coins/tokens the largest diameter coins need to be counted first. Set the diameter dial to the largest diameter coin/token in the hopper. Set the thickness to the thickest coin/token in the hopper. Note: Largest diameter coin may not be the thickest. The largest diameter coin/token will be counted while all others will be sorted into the reject coin box.
- After the largest diameter coins/tokens are counted load the rejected coins/tokens back into the hopper. Set the diameter dial to the largest diameter coin/token in the hopper. Set the thickness to the thickest coin/token in the hopper. Count the coins/tokens. Repeat the process until all coins/tokens have been counted and sorted.
- Several trial runs should then be performed to determine the machine's optimal settings. The following suggestions should help establish proper settings. Coin jamming may be experienced during trial runs.
 - If coins/tokens are observed in the reject coin box, the diameter adjustment should be decreased by 0.25mm (one click).
 - If coin jamming on the coin runway is experienced, the diameter setting should be increased by 0.25mm (one click).
 - If double-stacked coins/tokens are observed under the lock plate, this can indicate that the thickness setting is too large. Try decreasing the setting by 0.05mm.
 - If centrifugal wheel jamming is observed, it could indicate that the thickness setting is too small. Try increasing the thickness setting by 0.05mm.



Coins jammed in the runway.



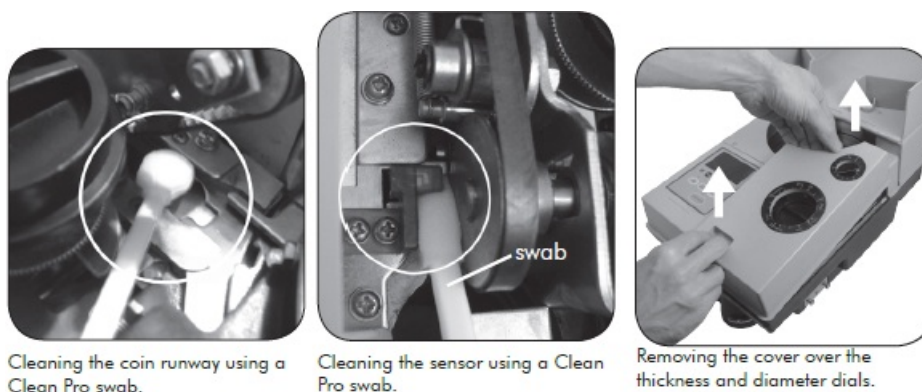
Double-stacked coins on the centrifugal disc.

MAINTENANCE AND TROUBLESHOOTING

Maintenance

Most of the problems in the machine operation can be avoided through regular and preventative maintenance. Regular maintenance of your coin counter significantly prolongs its service life.

1. Turn off and unplug the machine. Remove the cover over the thickness and diameter dials.
2. Use a vacuum or air duster to remove dust from the hopper and runway.
3. Clean the coin runway and the counting sensor using a small soft-bristled paintbrush. Be careful when cleaning the machine to keep hands and fingers away from the coin runway so as to avoid injury.
4. Use a Cassida Clean Pro cleaning swab to clean the counting sensor and runway.
5. Check whether the feed belt is dirty or worn. If it is dirty, it may be cleaned using a Cassida Clean Bill cleaning card or a soft cloth moistened with denatured alcohol. If the belt is worn, it should be replaced – contact the Cassida Service Center.



Exterior Cleaning

Clean the machine with a soft, lint-free cloth or duster. Do not use synthetic fabrics, detergents, water, or cleaning sprays as these may damage the machine.

Troubleshooting

- **Problem #1: Coins are counted incorrectly.**

Make sure the diameter and thickness settings are correct. Set the diameter dial to the largest diameter coin/token in the hopper. Set the thickness to the thickest coin/token in the hopper. Incorrect settings may lead to jamming or incorrect rejection of the coins. If the machine is set for too large a diameter, the machine may incorrectly reject more coins.

- **Problem #2: Coins are spinning inside the machine and are not dropping into the coin bag.**

Make sure the diameter and thickness settings are correct. Set the diameter dial to the largest diameter coin/token in the hopper. Set the thickness to the thickest coin/token in the hopper. Incorrect settings may lead to jamming or incorrect rejection of the coins. If the machine is set for too small a diameter, coins will not be able to pass through the gate and into the bag. Additionally, if the thickness setting is too high, coins may become double-stacked in the gate and cause jamming (see photo).



Coins double-stacked in the gate.

- **Problem #3: Machine will not power on.**

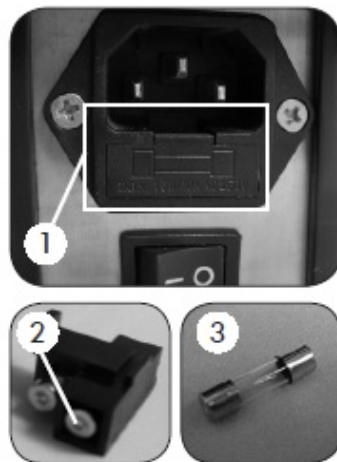
Check whether the machine is connected to proper voltage. The machine requires 110VAC for proper operation.

Unplug the unit from the wall outlet. Check the fuse located under the cover beneath the power cord connector. If the fuse is blown, replace it with the spare fuse included under the fuse cover.

- **Problem #4: The displayed data do not correspond the actual data.**

The counting sensor might be damaged or dirty. Please contact the Cassida Service center.

- **Problem #5: When turning on the machine the following errors are displayed:**



1. Location of fuse cover,
2. spare fuse in fuse holder, and
3. fuse.

Error code	Cause/Corrective actions
E60	Coins are jammed in the machine. Stop the machine, open the cover (refer to section 3.1. "Maintenance"). Clear the jam. Then press the start/stop key and restart the machine.
E04	The machine cover is removed or not installed properly. Stop the machine and make sure the cover is secure, then start the machine again.

WARRANTY AND CONTACT INFORMATION

Warranty

All Cassida products are warranted for a period of one year from the date of purchase. In most cases, the

malfunction of the machine can be resolved by cleaning the unit. Please refer to section 3.1 "Maintenance" for guidelines.

To activate your warranty please register your product online by visiting <http://cassidausa.com/register.html>

- **Coverage:**

The warranty covers defects in materials and workmanship. It does not cover maintenance and cleaning (cleaning parts or sensors of dust, replacing parts such as rubber rollers, V belts, etc. that are worn out by a natural cycle of work.)

- **Shipping:**

Return shipping from the Cassida service center is included for items under warranty. Shipping to the service center is at the customer's expense.

- **Non-warranty service:**

Cassida can perform maintenance and cleaning for an extra fee. For a non-warranty repair or maintenance quotation, contact Cassida Technical Support.

Contact information

- **email:** technicalsupport@cassidausa.com
- **phone:** 1-888-800-0303

When contacting Cassida Technical Support, please have the following information available:

- **Product model** – located on the rear panel of your currency counter.
- **Serial number** – located on the bottom of your currency counter.
- **Nature of the problem** – what happens, and when does it happen? Does the display show an error message?
- Steps already taken to resolve the problem.

©2018 Cassida Corporation. All rights reserved. Specifications subject to change without notice. Cassida is a registered trademark of Cassida Corporation. FN C500UM REV 0101

FREQUENTLY ASKED QUESTIONS

What is the Cassida C500 Compact Coin Counter?

The Cassida C500 Compact Coin Counter is a high-quality coin counting machine designed to accurately and efficiently count coins of various denominations. It is a valuable tool for businesses, banks, and organizations that handle large quantities of coins.

How does the Cassida C500 Compact Coin Counter work?

The Cassida C500 Compact Coin Counter utilizes advanced sensors and sorting technology to rapidly count and sort coins. Coins are fed into the machine, and it counts and organizes them into separate bins for each denomination, providing an accurate total count.

What types of coins can the Cassida C500 Compact Coin Counter handle?

The Cassida C500 Compact Coin Counter is designed to handle a wide range of coin denominations, making it suitable for use with various currencies. It can efficiently count and sort coins such as pennies, nickels, dimes, quarters, and more.

Does the coin counter offer counterfeit detection features?

The Cassida C500 Compact Coin Counter is primarily designed for counting and sorting coins and does not include counterfeit detection capabilities. It focuses on accurate counting and sorting, making it a valuable tool for businesses that need to handle large quantities of coins.

Is the Cassida C500 Compact Coin Counter user-friendly?

Yes, the Cassida C500 Compact Coin Counter is designed to be user-friendly. It typically features intuitive controls, a clear display, and straightforward functions, ensuring ease of operation for users with minimal training.

What is the counting speed of the Cassida C500 Compact Coin Counter?

The Cassida C500 Compact Coin Counter is known for its fast counting speed, capable of processing a large number of coins per minute. The exact counting speed may vary based on the specific model, but it is generally designed for efficient and rapid coin counting.

Can the Cassida C500 Compact Coin Counter handle mixed denominations?

Yes, the Cassida C500 Compact Coin Counter is equipped to handle mixed denominations. This means it can count and sort coins of different values and sizes in the same batch, providing added convenience for users dealing with various types of coins.

Does the coin counter have batch counting and adding functions?

Yes, the Cassida C500 Compact Coin Counter typically comes with batch counting and adding functions. Users can set a specific batch size for coins, and the machine will automatically pause and alert when that batch is complete. Additionally, it can add up multiple batches for total counting.

Is the Cassida C500 Compact Coin Counter portable and compact?

Yes, the Cassida C500 Compact Coin Counter is designed to be compact and portable. It is relatively lightweight and easy to move, allowing businesses and individuals to use it in various locations, such as retail stores, banks, or offices.

Is regular maintenance required for the Cassida C500 Compact Coin Counter?

While the Cassida C500 Compact Coin Counter is designed for durability and reliability, regular maintenance is advisable to ensure optimal performance. This may include cleaning the sensors, checking for debris, and following the manufacturer's guidelines for upkeep. Regular maintenance can prolong the lifespan of the

device and maintain accurate counting.

What is the warranty period for the Cassida C500 Compact Coin Counter?

The warranty typically range from 1 year to 2 years.

Can the Cassida C500 Compact Coin Counter be connected to other devices or systems?

Some models of the Cassida C500 Compact Coin Counter may come with connectivity options. These options can include USB ports or RS232 interfaces, allowing users to connect the coin counter to external devices, such as computers or printers. Connectivity features can enhance functionality and streamline the counting process.

Is there a customer support service provided for the Cassida C500 Compact Coin Counter?

Yes, reputable manufacturers and vendors of the Cassida C500 Compact Coin Counter often provide customer support services. This support can include technical assistance, troubleshooting guidance, and product-related inquiries. Customers can typically reach out to the manufacturer's customer support team for any issues or questions they may have regarding the operation or maintenance of the coin counter.

Can the Cassida C500 Compact Coin Counter be used in different countries with varying currencies?

Yes, the Cassida C500 Compact Coin Counter is designed to handle various currencies from different countries. It is equipped to count and sort coins of different denominations and sizes, making it suitable for international use. Users can adjust the settings or select the appropriate currency code to ensure accurate counting regardless of the currency in use.

Is there a user manual provided with the Cassida C500 Compact Coin Counter?

Yes, the Cassida C500 Compact Coin Counter typically comes with a user manual or instruction booklet. The manual provides detailed information on how to set up the device, operate it effectively, perform basic maintenance, and troubleshoot common issues. Users are encouraged to read the manual thoroughly to make the most out of their coin counting experience.

DOWNLOAD THE PDF LINK: [Cassida C500 Compact Coin Counter User Manual](#)

References

- [User Manual](#)