

Cassia S1000 Software Development Kit User Guide

Contents

- [1 Cassia S1000 Software Development Kit](#)
- [2 INSTALLATION INSTRUCTION](#)
- [3 Documents / Resources](#)
 - [3.1 References](#)



Cassia S1000 Software Development Kit

INSTALLATION INSTRUCTION

Step One – Associate your Bluetooth router with the Cassia IoT Access Controller (AC)

- Connect your router and your PC to the same local network
- Install a port scanner like “Advanced IP Scanner” on your PC to find the IP address of your router, see Figure 1.

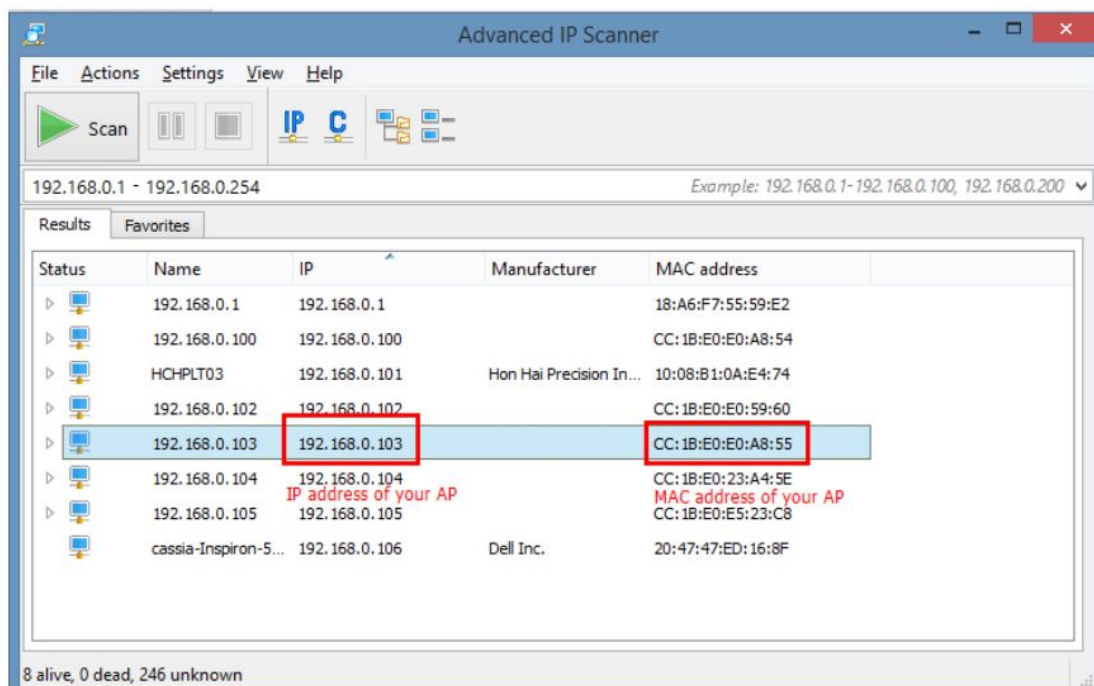


Figure 1 - Find the IP address of your router

- Access your Bluetooth router (AP) by entering its IP address in a web browser, see Figure 2.

The screenshot shows a web browser window with the address bar displaying '192.168.0.106'. The page has three tabs: 'Common' (selected), 'Networks', and 'Bypass'. Under the 'Common' tab, the following information is displayed: IP: eth0:192.168.0.105, wlan0:192.168.0.106; MAC: CC:1B:E0:E0:D4:BC; Model: S1100; Version: 1.12.10.15; Uptime: 211 hours. Below this, there is a section titled 'Developer account and AC address' with two input fields: 'Developer Key' containing 'tester' and 'AC Address' containing 'demo.cassia.pro'. Each field has a 'Clear' button to its right. Under the 'Other' section, there are two dropdown menus: 'Timezone' set to '(GMT +08:00) Pacific Time (US & Canada)' and 'Scenario' set to 'Connection and scanning'. At the bottom, there is a blue 'Save' button and a copyright notice 'Copyright © Cassia Networks'.

Figure 2 Access the router's configuration page

- In the Common section, please enter your Developer Key and AC Address.

Step Two – Access the Cassia IoT Access Controller (AC)

- Enter the IP address or domain name of your AC into the address bar. For example, <http://demo.cassia.pro>
- Input the user name and password, then click Login. See Figure 3 below.

The screenshot shows a web browser window with the address bar displaying 'demo.cassia.pro/session?view'. The page has a black header with the Cassia logo and the text 'Cassia IoT Access Controller Beta'. The main content area is light gray. In the center, there is a white box with a blue dot and the text 'Welcome!'. Below this, there are two input fields: 'Username:' containing 'admin' and 'Password:' containing '*****'. Below the password field is a blue 'Login' button.

Figure 3 - Cassia AC login page

Step Three – Change the settings of Cassia IoT Access Controller (AC)

- Input your Developer Key, Developer Secret, and License as indicated in Figure 4 below.

Figure 4: Input your developer key, secret, and license

Step Four – Add Bluetooth router (AP) to AC routers list

- Navigate to the Routers page, as shown in Figure 5 below.

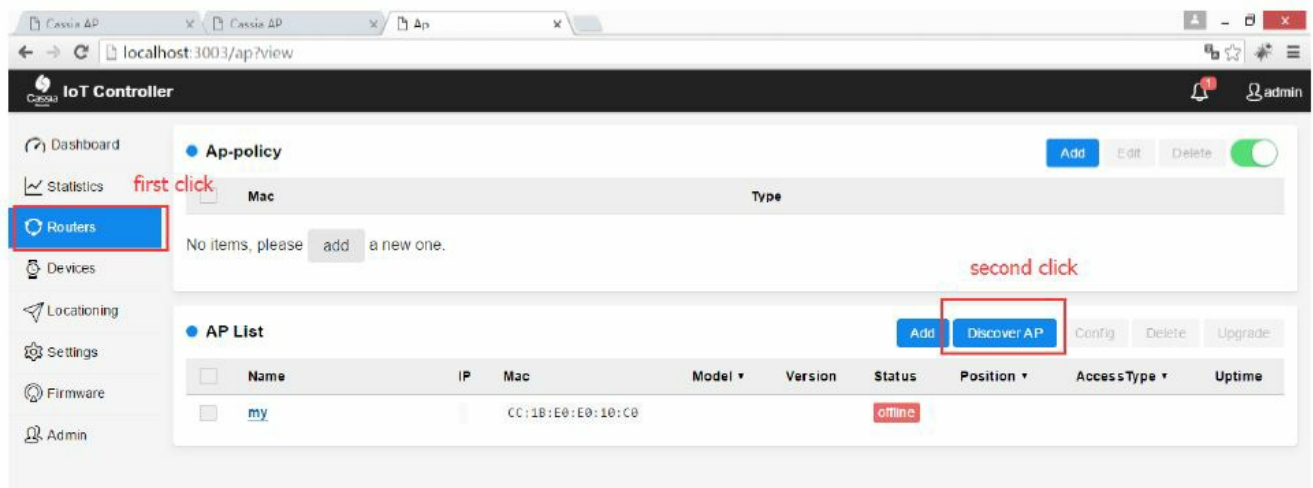


Figure 5: Add Bluetooth router to AC routers list

- Click “Routers -> Discover AP”, AC will identify all Bluetooth routers in its network and display them in the table.
- Check the routers you want to add, then click “Add” button.
 - **Note:** You can select multiple routers and add all of them to be managed under the AC, see Figure 6.



Figure 6: Discover your router and add it into the AC

- User your router’s MAC address to identify it on the list of discovered devices.

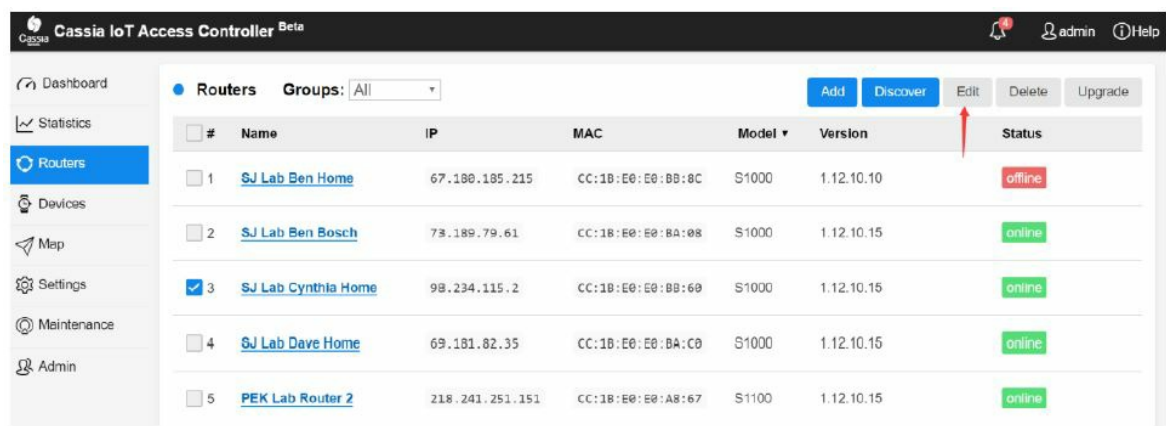
Note: Your router's MAC address is located on the bottom of the router, as noted in Figure 7 below.



Figure 7: Cassia S1000 router's MAC address

Step Five – Configure the Bluetooth Router (AP)

- To configure a router, check the checkbox next to the desired router and click the Edit button as seen on Figure 8.



2015-2017 Cassia Networks®

- Locate the Common Settings tab as shown in Figure 9 below to set Developer key.

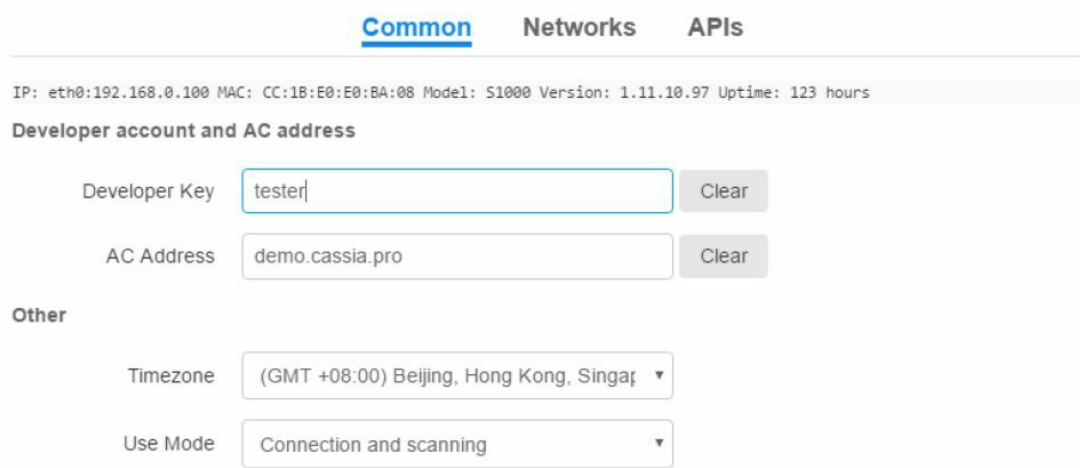


Figure 9: Set Developer Key on your Router

- Make sure to enter the same Developer Key as your AC. If the AC Address field is empty, please enter your AC

domain name or IP address, for example, demo.cassia.pro.

- Configure network settings from the Networks tab

CONNECTION OPTIONS – The Cassia Bluetooth Router supports the following networking uplinks:

- Wired (Ethernet) – you can set the router to use a static IP address or DHCP
- Wireless (Wi-Fi) – enter your Wi-Fi SSID and password, then click Save. The router will go offline briefly and then come back online.
- 3G/4G dongle – Cassia currently supports two cellular dongles: ZTE MF823 in China and AT&T AirCard 313U in the US

Important: When two or more network connections are activated, you can set priority levels for the networks. By default, the priority is Wired > Wireless > Cellular (3G/4G).

Step Six – Upgrade the router

- Upload firmware image to AC
- Navigate to Firmware on side navigation menu and click “Add from Local” button. See Figure 10 below.

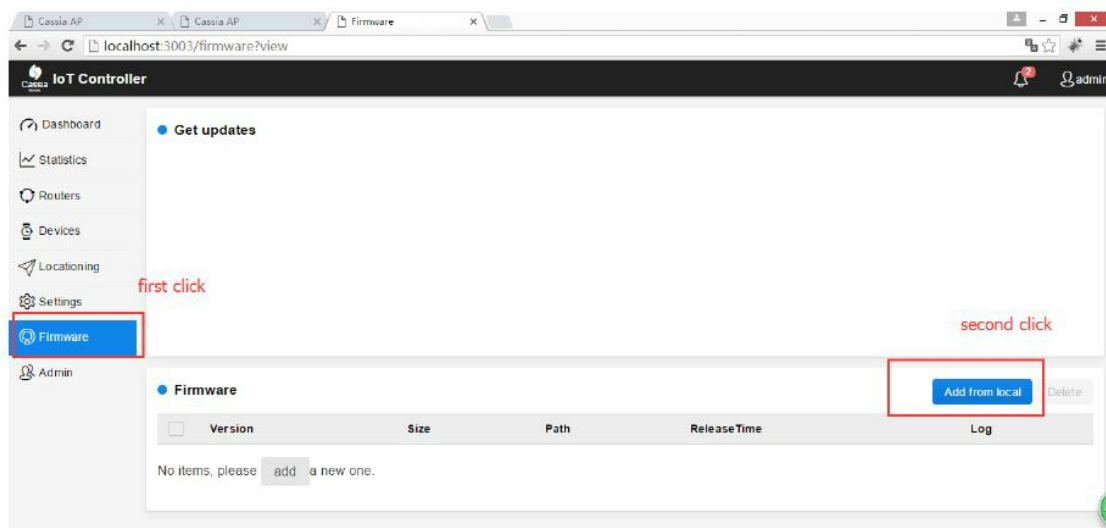


Figure 10: Upload firmware to AC

- From there, select a firmware image from your PC and upload it to the AC.
- Use AC to upgrade router(s)
- Navigate to Routers on side navigation menu, select the router(s) that need to be upgraded, and click the Upgrade button. See Figure 11.



Figure 11: Upgrade a router

- From the text box, choose a Firmware version you want to upgrade to, then click OK. See figure 12 below.

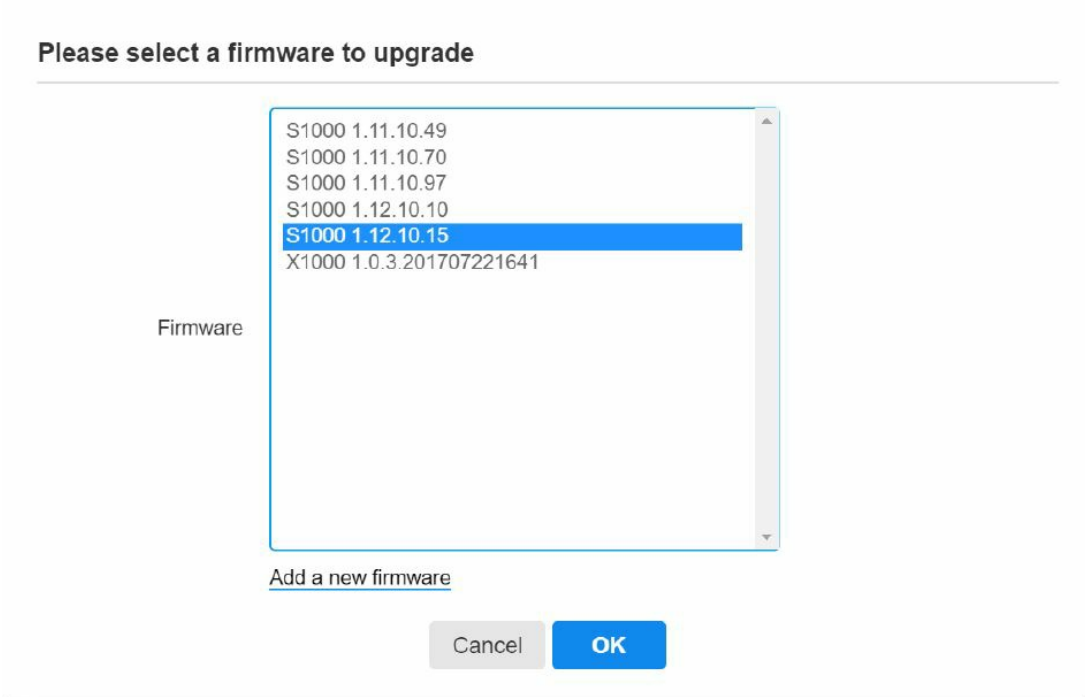
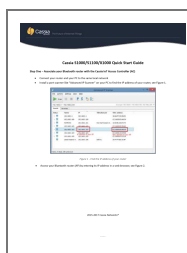


Figure 12: Select a firmware version and upgrade the router

- The AC will finish the upgrade for all of the routers you have selected.
 - For more questions, please contact support@cassianetworks.com.
- 2015-2017 Cassia Networks®

Documents / Resources



[Cassia S1000 Software Development Kit](#) [pdf] User Guide
S1000 Software Development Kit, S1000, Software Development Kit, Development Kit

References

- [M_H Search - Manual-Hub.com](#)

Manuals+.