



CASIO SA-80 Mini Portable Keyboard User Guide

[Home](#) » [Casio](#) » CASIO SA-80 Mini Portable Keyboard User Guide 

CASIO®

SA-80 / SA-81
Mini Portable Keyboard
User Guide

Contents

- [1 SA-80 Mini Portable Keyboard](#)
- [2 Getting Ready](#)
- [3 Reference](#)
- [4 Specifications](#)
- [5 Built-in Music Data Lists](#)
- [6 General Guide](#)
- [7 Documents / Resources](#)
 - [7.1 References](#)
- [8 Related Posts](#)

SA-80 Mini Portable Keyboard



SA80/81ES-1A

Please keep all information for future reference.

CASIO COMPUTER CO.,LTD.

6-2, Hon-machi 1-chome

Shibuya-ku, Tokyo 151-8543, Japan

© MA2208-A Printed in China

© 2022 CASIO COMPUTER CO., LTD.

- Any reproduction of the contents of this manual, either in part or its entirety, is prohibited. Except for your own, personal use, any other use of the contents of this manual without the consent of CASIO is prohibited under copyright laws.
- IN NO EVENT SHALL CASIO BE LIABLE FOR ANY DAMAGES WHATSOEVER (INCLUDING, WITHOUT LIMITATION, DAMAGES FOR LOSS OF PROFITS, BUSINESS INTERRUPTION, LOSS OF INFORMATION) ARISING OUT OF THE USE OF OR INABILITY TO USE THIS MANUAL OR PRODUCT, EVEN IF CASIO HAS BEEN ADVISED OF THE POSSIBILITY OF SUCH DAMAGES.
- The contents of this manual are subject to change without notice.
- The actual appearance of the product may be different from that shown in the illustrations in this User's Guide.
- Company and product names used in this manual may be registered trademarks of others.

NOTICE

This equipment has been tested and found to comply with the limits for a Class B digital device, pursuant to Part 15 of the FCC Rules.

These limits are designed to provide reasonable protection against harmful interference in a residential installation. This equipment generates, uses and can radiate radio frequency energy and, if not installed and used in accordance with the instructions, may cause harmful interference to radio communications. However, there is no guarantee that interference will not occur in a particular installation. If this equipment does cause harmful interference to radio or television reception, which can be determined by turning the equipment off and on, the user is encouraged to try to correct the interference by one or more of the following measures:

- Reorient or relocate the receiving antenna.
- Increase the separation between the equipment and receiver.
- Connect the equipment into an outlet on a circuit different from that to which the receiver is connected.
- Consult the dealer or an experienced radio/TV technician for help.

FCC WARNING

Changes or modifications not expressly approved by the party responsible for compliance could void the user's authority to operate the equipment.

Declaration of Conformity

Model Name: SA-80, SA-81

Trade Name: CASIO COMPUTER CO., LTD.

Responsible party: CASIO AMERICA, INC.

Address: 570 MT. PLEASANT AVENUE, DOVER, NEW JERSEY 07801

Telephone number: 973-361-5400

This device complies with Part 15 of the FCC Rules, Operation is subject to the following two conditions:

(1) This device may not cause harmful interference, and **(2)** this device must accept any interference received, including interference that may cause undesired operation.

TO REDUCE THE RISK OF FIRE OR ELECTRIC SHOCK, REFER SERVICING TO QUALIFIED SERVICE PERSONNEL.

Important Information for Parents!

Parents should please note the following important information before letting children use this product.

- Before using the AD-E95100LE/LG/LJ/LU/LW adaptor to power the unit, be sure to check the AC adaptor for any damage first. Carefully check the power cord for breakage, cuts, exposed wire and other serious damage. Never let children use an AC adaptor that is seriously damaged.
- Never mix batteries of different types.
- Never mix old batteries with new ones.
- Use recommended batteries or equivalent types.
- Always make sure that positive (+) and negative (–) poles are facing correctly as indicated near the battery

compartment.

- Replace batteries as soon as possible after any sign they are getting weak.
- Do not short-circuit the battery terminals.
- The product is not intended for children under 3 years.
- Use only CASIO AD-E95100LE/LG/LJ/LU/LW adaptor.
- Be sure to disconnect the AC adaptor before cleaning the product.

Be sure to read the "Safety Precautions" in the separate "READ THIS!" sheet, and use the product correctly.



Manufacturer:

CASIO COMPUTER CO., LTD.

6-2, Hon-machi 1-chome, Shibuya-ku, Tokyo 151-8543, Japan

Responsible within the European Union: Casio Europe GmbH

Casio-Platz 1, 22848 Norderstedt, Germany

www.casio-europe.com



Manufacturer: CASIO COMPUTER CO., LTD.

6-2, Hon-machi 1-chome, Shibuya-ku, Tokyo 151-8543, Japan

Responsible within the United Kingdom: Casio Electronics Co. Ltd.

10 Norwich Street, London, EC4A 1BD, U.K.

www.casio.co.uk

Getting Ready

Power Supply

Prepare a household power outlet or batteries.



IMPORTANT!

- Be sure to comply with the "Safety Precautions" provided in the separate "READ THIS!" sheet. Incorrect use of this product creates the risk of electric shock and fire.
- Always make sure that the Digital Keyboard is turned off before plugging in or unplugging the AC adaptor, or before loading or removing batteries.

Using a Household Power Outlet

Make sure that you use only the AC adaptor specified for this keyboard. Use of a different type of AC adaptor can cause malfunction.

CASIO

Specified AC Adaptor:



AD-E95100LE/LG/LJ/LU/LW*

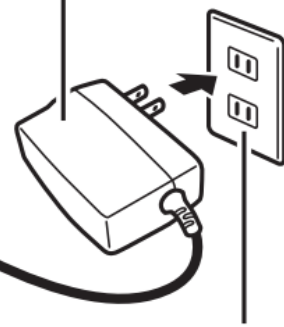
(JEITA Standard plug)

* Check with your dealer for the name of the AC adaptor to be used.

DC 9.5V terminal



AC adaptor

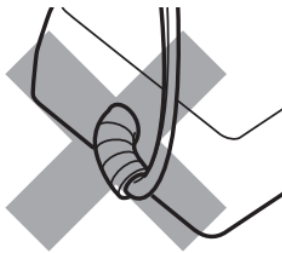


Household power outlet

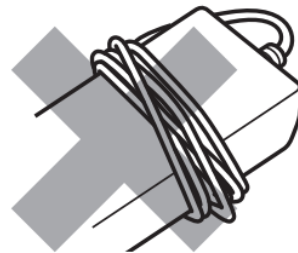
IMPORTANT!

- The AC adaptor will become warm to the touch after very long use. This is normal and does not indicate malfunction.
- To prevent breaking of the wire, take care to avoid putting any type of load on the power cord.

No bending!



No winding!



Using Batteries

Use 6 commercially available size AA alkaline batteries or NiMH rechargeable batteries.

- Commercially available size AA manganese batteries can also be used, but because some types of usage may require high power consumption, the use of alkaline batteries or NiMH rechargeable batteries is recommended.

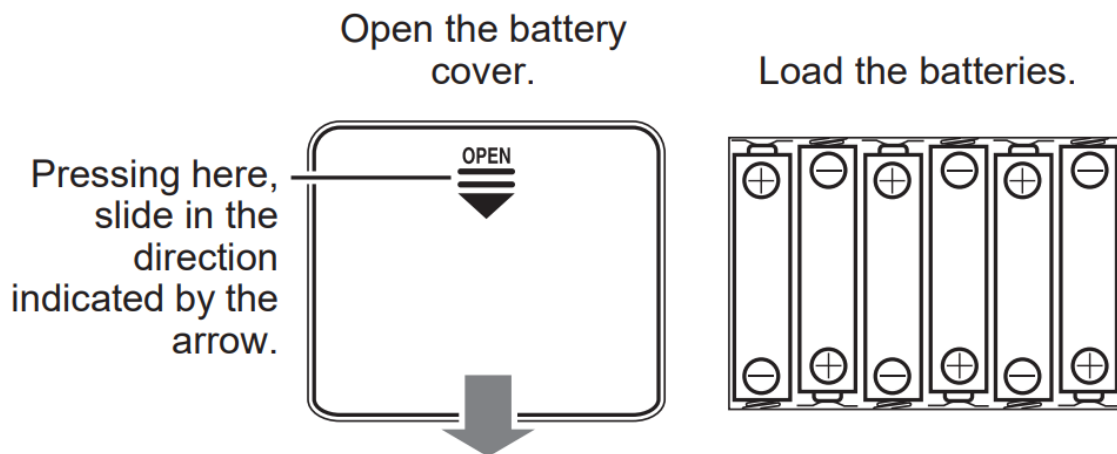
Note the precautions below when using rechargeable batteries.



- Use Panasonic Group AA-size eneloop rechargeable batteries. Do not use any other type of batteries.
- Use only the specified charger to charge batteries.
- Rechargeable batteries must be removed from the product for charging.
- For information about using eneloop batteries or their specified charger, be sure to read the user documentation and precautions that come with each item, and use them only as directed.

Open the battery cover on the bottom of the Digital Keyboard, load the batteries, and then close the cover.

- Take care to ensure that the positive + and negative – ends of the batteries are facing correctly.



IMPORTANT!

- Battery life is approximately 12 hours of continuous use (based on alkaline batteries, normal play). Any of the symptoms below may indicate batteries are low and need to be replaced as soon as possible.
- Distorted sound
- Sudden loss of power
- Power immediately cuts out after being restored
- Failure to start up
- Failure to operate correctly

NOTE

- The Digital Keyboard will turn off automatically to preserve battery power if you do not perform any operation for about six minutes (Auto Power Off).
Hold down the TONE button while turning on the keyboard to disable Auto Power Off.

Reference

Troubleshooting

- **There is no sound when I press keyboard keys.**
 - Check to make sure batteries are loaded or that the AC adaptor is connected correctly. (See “Power Supply”.)
 - Unplug the plug from the **20** (PHONES/OUTPUT) jack if one is connected.
- **The sound is distorted. The power suddenly cuts out.**
 - Battery power may be low. See “Power Supply”.

Specifications

Model Name: SA-80, SA-81

Keyboard: 44 mini-size keys, 3.5 octaves

Polyphony: 32 notes maximum

Tones: 100

Preset Rhythms: 50

Preset Songs: 10 tunes; melody off

Tuning: A4 = 415.5 to 440.0 to 465.9 Hz

Other Functions: Transpose, Octave Shift, Reverb, Scale Tuning (Temperament)

Speakers: ϕ 8 cm \times 2 (output: 0.8 W + 0.8 W)

Power Jack: DC 9.5V

Phones/Output jack: Stereo mini jack

Output Impedance: 120 Ω

Output Voltage: 500 mV (RMS) MAX

Power Supply: 2-way

- **Batteries:** 6 AA-size alkaline batteries or AA-size rechargeable nickel-metal hydride batteries
- **Battery Life:** Approximately 12 hours (alkaline batteries), approximately 10 hours (rechargeable nickel-metal hydride batteries)*
- **AC Adaptor:** AD-E95100LE/LG/LJ/LU/LW
- **Auto Power Off:** Approximately 6 minutes after last key operation

Power Consumption: 9.5 V \equiv 3.8 W

Dimensions: 60.4 \times 21.1 \times 5.7 cm (23 3/4 \times 8 5/16 \times 2 1/4 inch)

Weight: Approximately 1.4 kg (3.1 lbs) (without batteries)

* Measured values while using eneloop batteries. eneloop is a registered trademark of Panasonic Group.



- Design and specifications are subject to change without notice.
- You can get information about accessories that are separately for this product from the CASIO keyboard catalog available from your retailer, and from the CASIO website at the following URL.
<https://world.casio.com/>

For information about the product and its music scores, visit the CASIO website.

<https://support.casio.com/global/en/emi/manual/SA-80/>



<https://support.casio.com/global/en/emi/manual/SA-80/>

Scale Tuning List

Setting	Scale Tuning Name
00	Equal
01	Pure Major
02	Pure Minor
03	Pythagorean
04	Kirnberger 3
05	Werckmeister
06	Mean-Tone
07	Rast
08	Bayati
09	Hijaz
10	Saba
11	Dashti
12	Chahargah
13	Segah
14	Gurjari Todi
15	Chandrakauns
16	Charukeshi

Built-in Music Data Lists

Tone List

PIANO	MELODIC PERC.	ORGAN
00 GRAND PIANO 01 BRIGHT PIANO 02 STRINGS PIANO 03 ELEC.GRAND PIANO 04 ELEC.PIANO 1 05 ELEC.PIANO 2 06 HARPSICHORD 07 CLAVI 08 THUMB PIANO	09 VIBRAPHONE 10 MARIMBA 11 XYLOPHONE 12 CELESTA 13 GLOCKENSPIEL 14 TUBULAR BELL 15 STEEL DRUMS	16 ELEC.ORGAN 17 PERC.ORGAN 18 ROCK ORGAN 19 PIPE ORGAN 20 REED ORGAN 21 ACCORDION 22 HARMONICA 23 BANDONEON

GUITAR	BASS	STRINGS
24 NYLON STR.GUITAR 25 STEEL STR.GUITAR 26 JAZZ GUITAR 27 CLEAN GUITAR 28 MUTE GUITAR 29 OVERDRIVE GT 30 DISTORTION GT 31 GT HARMONICS 32 BANJO	33 ACOUSTIC BASS 34 FINGERED BASS 35 PICKED BASS 36 FRETLESS BASS 37 SLAP BASS 38 SYNTH-BASS 1 39 SYNTH-BASS 2	40 VIOLIN 41 CELLO 42 CONTRABASS 43 PIZZICATO 44 HARP 45 KOTO 46 STRINGS 47 SLOW STRINGS 48 SYNTH-STRINGS 49 ORCHESTRA HIT
BRASS	WOOD WIND	SYNTH/PAD
50 TRUMPET 51 TROMBONE 52 TUBA 53 MUTE TRUMPET 54 FRENCH HORN 55 BRASS 56 SYNTH-BRASS 1 57 SYNTH-BRASS 2	58 ALTO SAX 59 TENOR SAX 60 SOPRANO SAX 61 BARITONE SAX 62 OBOE 63 ENGLISH HORN 64 BASSOON 65 CLARINET 66 FLUTE 67 PICCOLO 68 RECORDER 69 PAN FLUTE 70 WHISTLE 71 OCARINA	72 SQUARE LEAD 73 SAW LEAD 74 CALLIOPE 75 VOICE LEAD 76 BASS+LEAD 77 CHOIR AAHS 78 VOICE DOO 79 SYNTH-VOICE 80 WARM PAD 81 SPACE CHOIR 82 METAL PAD 83 RAIN DROP 84 SOUND TRACK 85 ATMOSPHERE 86 BRIGHTNESS
INDIAN	SE/PERCUSSION	

87 SITAR 88 HARMONIUM 1 89 HARMONIUM 2 90 SANTUR 91 TABLA 92 PIPE ORGAN (INDIAN) 93 HARMONICA (INDIAN) 94 TRUMPET (INDIAN)	95 SEASHORE/BIRD 96 HELICOPTER/GUNSHOT 97 WOOD BLOCK/TAIKO 98 MELODIC TOM/ SYNTH-DRUM 99 DRUM SET	
---	--	--

Rhythm List

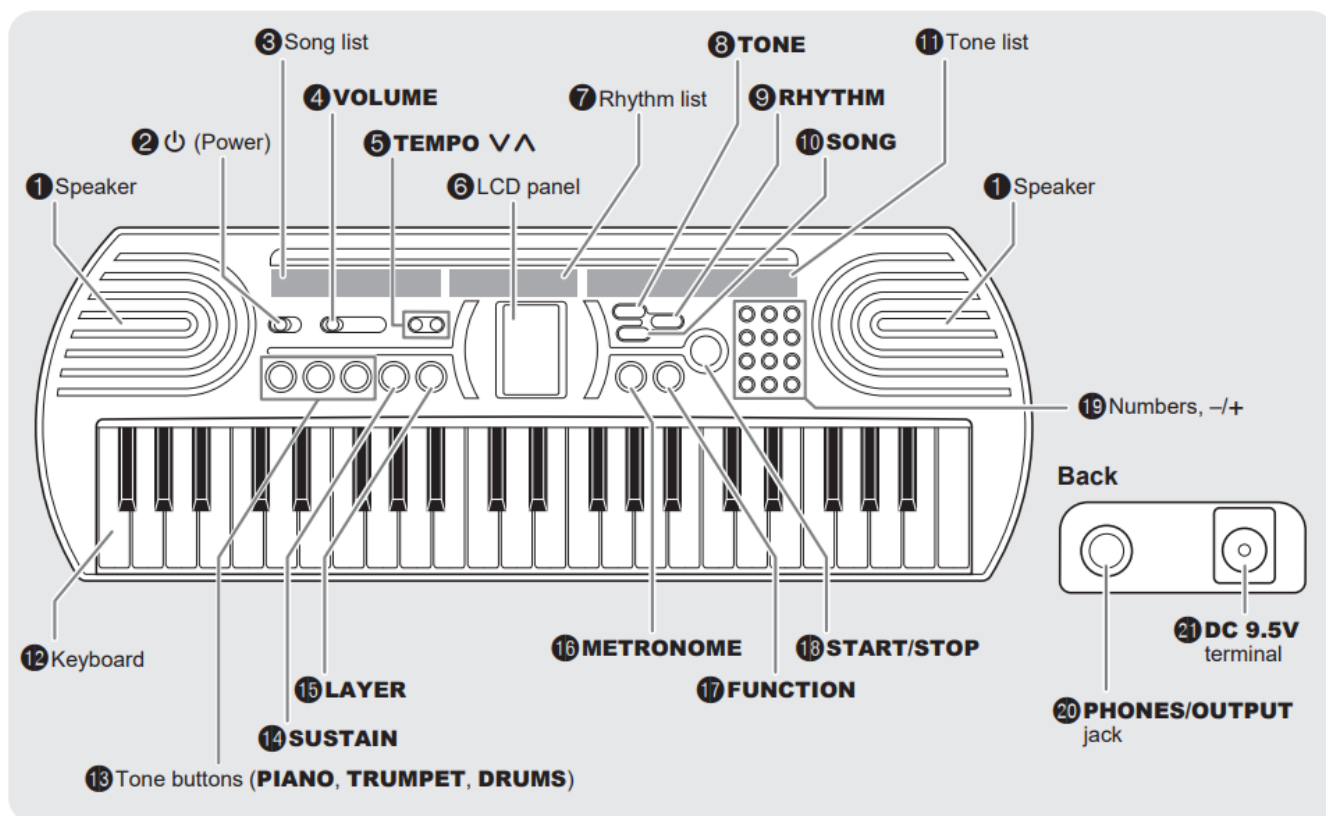
POPS	BALLAD	DANCE
00 STRAIGHT 8 BEAT 01 8 BEAT POP 02 MELLOW 8 BEAT 03 60's 8 BEAT 04 16 BEAT 1 05 16 BEAT 2 06 16 BEAT SHUFFLE	07 POP BALLAD 08 MODERN BALLAD 09 16 BEAT BALLAD 10 6/8 BALLAD	11 EDM 12 TECHNO POP 13 TRANCE 14 MODERN DANCE 15 DISCO SOUL
ROCK/JAZZ	EUROPEAN	LATIN
16 STRAIGHT ROCK 17 BLUES 18 SLOW ROCK 19 MIDDLE BIG BAND 20 JAZZ WALTZ	21 POLKA 22 WALTZ 23 TANGO 24 MARCH 1 25 MARCH 2	26 BOSSA NOVA 27 BEGUINE 28 SAMBA 29 CHA-CHA-CHA 30 MERENGUE 31 SALSA 32 REGGAE 33 CUMBIA 34 REGGAETON
WORLD I	WORLD II	
35 BLUEGRASS 36 DIXIE 37 FAST GOSPEL 38 PASODOBLE 39 ADANI 40 BALADI 41 MUS 42 KRONCONG 43 DANGDUT	44 BHANGRA 45 DADRA 46 KEHARWA 47 TEEN TAAL 48 BHAJAN 49 INDIAN POP	

Drum Map

Key	99:DRUM SET	Key	99:DRUM SET
F1-E2	—	G#4	Triangle Close

F2	Synth Kick	A4	Triangle Open
F#2	Synth Snare 1	Bb4	Claves
G2	Synth Snare 2	B4	Mute Cuica
G#2	Dance Kick 2	C5	Open Cuica
A2	Dance Kick 1	C#5	Mute High Conga
Bb1	Dance Snare 1	D5	Open High Conga
B2	Dance Snare 2	0.00E+00	Open Low Conga
C3	Dance Clap	E5	High Agogo
C#3	Snare 3	F5	Low Agogo
D3	Brush Snare Slap	F#5	High Whistle
Eb3	Brush Snare Sweep	G5	Low Whistle
E3	Kick 2	G#5	Tabla Ge
F3	Kick 1	A5	Tabla Ka
F#3	Side Stick	Bb5	Tabla Te
G3	Snare 1	B5	Tabla Na
G#3	Closed Hi-Hat	C6	Tabla Tun
A3	Snare 2	C#6	High Timbale
Bb3	Open Hi-Hat	D6	Low Timbale
B3	Low Tom	0.00E+00	High Bongo
C4	Mid Tom	E6	Low Bongo
C#4	Crash Cymbal	F6	Long Guiro
D4	High Tom	F#6	Short Guiro
0.00E+00	Ride Cymbal	G6	Cowbell
E4	Xiao Luo	G#6	High Wood Block
F4	Vibraslap	A6	Low Wood Block
F#4	Tambourine	Bb6	Cabasa
G4	Maracas	B6	Shaker
		C7	Hand Clap

General Guide



Playing Something on the Digital Keyboard

1. Set **2** (Power) to "ON".
The Digital Keyboard switches on.
2. Use **12** (Keyboard) to make a sound.
3. Use **4** (VOLUME) to adjust the volume.

Playing Using Tones

1. Press **8** (TONE).



2. Choose your favorite tone from the **11** (Tone list) or from the tone list in this User's Guide, and then enter its number using the numbers or the plus (+) and minus (-) buttons **19**.
 - Enter a 2-digit tone number.
For example, to select "05 ELEC.PIANO 2", press "0" and then "5".
 - You can also use plus (+) and minus (-) buttons to change the number. ("+" increases the number and "-" decreases the number.) Holding the button down changes the number continuously.
 - Press "+" and "-" at the same time to return to the original setting.
3. Use **12** (Keyboard) to play the tone you chose.



- You can use **13** (PIANO, TRUMPET, DRUMS) to quickly and easily select the GRAND PIANO (00), TRUMPET (50) and DRUM SET (99) tones.

Sustaining Notes After Keyboard Keys Are Released

1. Press **14** (SUSTAIN).

This enables sustain.



- Changing the tone cancels sustain.

Layering Two Tones

You can use the procedure below to layer two tones and output the resulting sound. The part that is played using a single tone is the main part, while the second part that is layered over the main part is the layer part.

1. Press **15** (LAYER).

This enables layering.



2. Use the numbers or plus (+) and minus (–) buttons **19** to change the tone of the layer part.
3. To cancel the layer, press **15** (LAYER) again or press **13** (PIANO, TRUMPET, DRUMS).

Playing Using the Metronome

1. Press **16** (METRONOME).

The metronome starts up.

2. Press **16** (METRONOME) again to stop the metronome.



- For information on how to change the metronome tempo, see “Changing the Speed (Tempo) of a Rhythm or Built-in Song”.

Changing the Beat

You can use the procedure below to configure the settings so that the Digital Keyboard sounds a chime on the

first beat of each measure and a click on the remaining beats.

1. Press **16** (METRONOME).



2. Use the numbers or the plus (+) and minus (–) buttons **19** to enter the beat.
 - Choose a beat setting from 0-9.
 - If you choose “0”, no chime sounds on the first beat.

Playing Using a Rhythm

You can have rhythms from various musical genres play as backing while you play the Digital Keyboard.

1. Press **9** (RHYTHM).



2. Choose your favorite rhythm from **7** (Rhythm list) or from the rhythm list in this User's Guide, and then enter its number using the numbers or the plus (+) and minus (–) buttons **19**.
 - The procedure for entering the number is the same as for tone numbers.
3. Press **18** (START/STOP) to play the rhythm you chose.
 - To stop the rhythm, press **18** (START/STOP) again.



- For information on how to change the tempo of the rhythm, see “Changing the Speed (Tempo) of a Rhythm or Built-in Song”.

Listening to Built-in Songs

1. Press **10** (SONG).



2. Choose a song from **3** (Song list) and then enter its number using the numbers or the plus (+) and minus (–) buttons **19**.

- When using numbers to choose a song, start by entering “0”. The procedure for entering the number is the same as for tone numbers.
 - To listen through all the songs, display “AL” on the LCD panel. To display “AL”, either use the plus (+) and minus (–) buttons, or just press one of the number buttons “1-9” without first pressing “0”.
3. Press **18** (START/STOP) to play the song you chose.
- To stop the song, press **18** (START/STOP) again.

NOTE

- For information on how to change the tempo of the rhythm, see “Changing the Speed (Tempo) of a Rhythm or Built-in Song”.
- If you change the tempo, tone or any other setting for a song while listening to all the songs “AL”, the changed song settings revert to their initial values when the next song is played.

Muting the Song Melody So You Can Play it Yourself

1. Hold down **10** (SONG).

This mutes the melody for built-in songs.

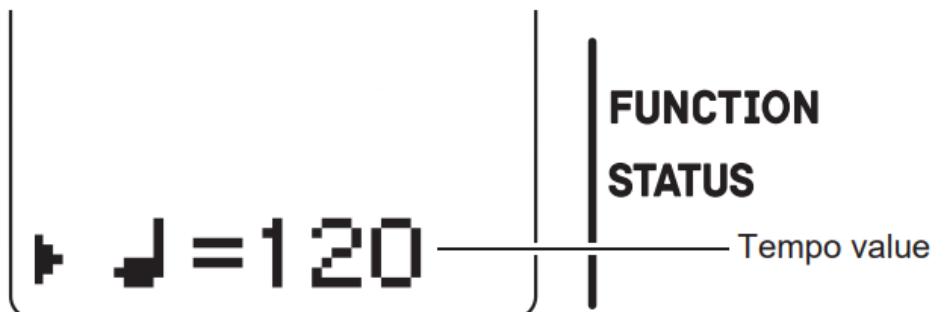


2. Press **18** (START/STOP).

The melody is not played, so you can play it yourself on the keyboard **12**.

Changing the Speed (Tempo) of a Rhythm or Built-in Song

1. Press **5** (TEMPO $\vee \wedge$).



2. Use **5** (TEMPO $\vee \wedge$) or the numbers or plus (+) and minus (–) buttons **19** to change the tempo value.

- You can change the tempo in increments of 10 using **5** (TEMPO $\vee \wedge$) or in single increments using the plus (+) and minus (–) buttons **19**.
- You can set any value between 20 and 255.

Changing the Function Settings

Use the procedure below to change the function settings.

1. Press **17** (FUNCTION).

- The setting changes each time you press **17** (FUNCTION). ► is displayed to the left of the set value.



Display	Description
OCTAVE	Raise or lower pitch in octave units. Setting: -1 to +1
TRANS.	Raises or lowers the overall pitch in semitone steps. Setting: -12 to 0 to +12
REVERB	Uses Reverb type to change the sound's reverberation. Setting: OFF, ROOM, HALL1, HALL2, STADIUM
SCALE TYPE	Allows you to change the keyboard scale by selecting your preferred scale from the 17 preset scales in the Scale Tuning List in the User's Guide.
SCALE BASE	Changes the scale tuning base note. Setting: C through B
TUNING	Fine tunes the overall pitch by changing the frequency of A4 in 0.1 Hz units. Setting: 415.5 Hz to 440.0 Hz to 465.9 Hz

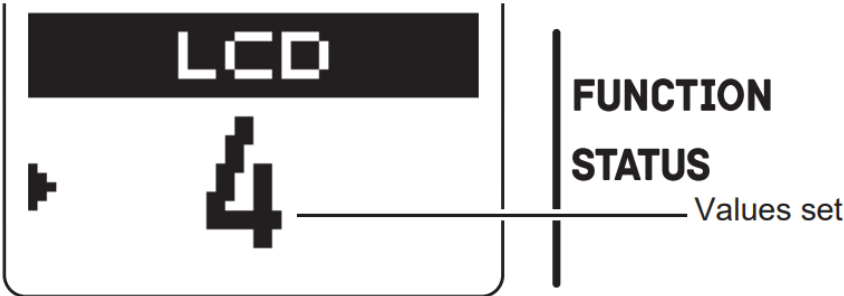
2. Use the numbers or the plus (+) and minus (-) buttons **19** to enter a value.

- You can also change the base note setting for a scale tuning by pressing a key on the keyboard **12**.
- Press “+” and “-” at the same time to return to the original setting.
- The original display returns after a few moments.

Making the Screen Easier to See

You can adjust the contrast of the LCD panel.

1. Hold down **17** (FUNCTION) and press “0” in **19**.



2. Use the numbers or the plus (+) and minus (-) buttons **19** to enter a value.

- You can set any value between 1 and 8.

3. Press any button other than the numbers or plus (+) and minus (–) buttons **19** to exit the setting.

NOTE

- The LCD contrast setting is retained even if you switch the Digital Keyboard off.

Settings at Power Off

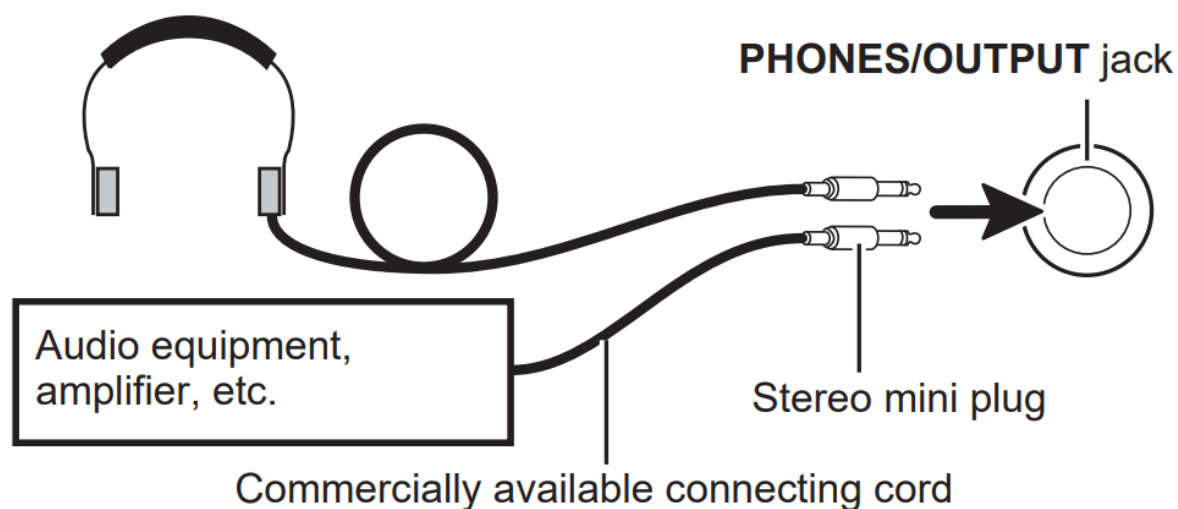
When you turn the Digital Keyboard off, all settings such as the tone numbers and song numbers revert to their original settings. You cannot save your settings before turning the Digital Keyboard off.

Using Headphones or Audio Equipment

Connect headphones or audio equipment to the PHONES/OUTPUT jack on the back of the Digital Keyboard.

- If the plug you are using does not match the jack, use a commercially available adaptor plug.

Commercially available headphones



IMPORTANT!

- Do not listen to very high volume output over headphones for long periods. Doing so creates the risk of hearing damage.
- When connecting a musical instrument amplifier, set the Digital Keyboard volume to a low level and use the amplifier's volume control to adjust to the desired volume level.

CASIO®

Documents / Resources



[CASIO SA-80 Mini Portable Keyboard \[pdf\] User Guide](#)

SA-80, SA-81, SA-80 Mini Portable Keyboard, SA-80, Mini Portable Keyboard, Portable Keyboard, Keyboard

References

- [!\[\]\(694fcb4611893e9db5249daba48abfc1_img.jpg\) Offizielle CASIO Website - Deutschland | CASIO](#)
- [!\[\]\(8ec8d5dc48934930a762fecf6ecbe179_img.jpg\) Casio Watches, Calculators, Pianos & More | CASIO](#)
- [!\[\]\(c34a15e67573dae8fbb88f4cbfb0f2e9_img.jpg\) SA-80/81 - CASIO](#)
- [!\[\]\(41f06fdeabb4e5a71d06fe8f32a46127_img.jpg\) SA-80/81 - CASIO](#)
- [!\[\]\(18eb66208e65404cce5042d73cf0a851_img.jpg\) Corporate | CASIO](#)

Manuals+.