



CASIO QW-5623 User Guide

[Home](#) » [Casio](#) » CASIO QW-5623 User Guide 

MA2005-EB
© 2020 CASIO COMPUTER CO., LTD.
User's Guide 5623

CASIO

Congratulations upon your selection of this CASIO watch.

Visit the website below for the operation manual (Operation Guide) of this watch.

<https://world.casio.com/manual/wat/>



The Bluetooth® word mark and logos are registered trademarks owned by Bluetooth SIG, Inc. and any use of such marks by CASIO COMPUTER CO., LTD. is under license.

This product has a Mobile Link function that lets it communicate with a Bluetooth® capable phone to perform automatic time adjustment and other operations.

- This product complies with or has received approval under radio laws in various countries and geographic areas. Use of this product in an area where it does not conform to or where it has not been approved under applicable radio laws may be punishable under local laws. For details, visit <https://world.casio.com/ce/BLE/>.
- Use of this product inside of an aircraft is restricted by the aviation laws of each country. Be sure to obey instructions provided by flight personnel concerning use of devices such as this product.

Contents

1 Using the Watch

1.1 Charging

1.2 General Guide

1.3 Selecting a Mode

2 Setting the Time

2.1 Changing the Dual Time, Alarm Time, or Timer Time Setting

3 Specifications

4 Documents / Resources

4.1 References

5 Related Posts

Using the Watch

Charging

Remove the watch from your wrist and place it in a brightly lit area.

- The watch may become hot when exposed to light for charging. Take care to avoid burn injury.
- Avoid charging in locations where it is very hot.

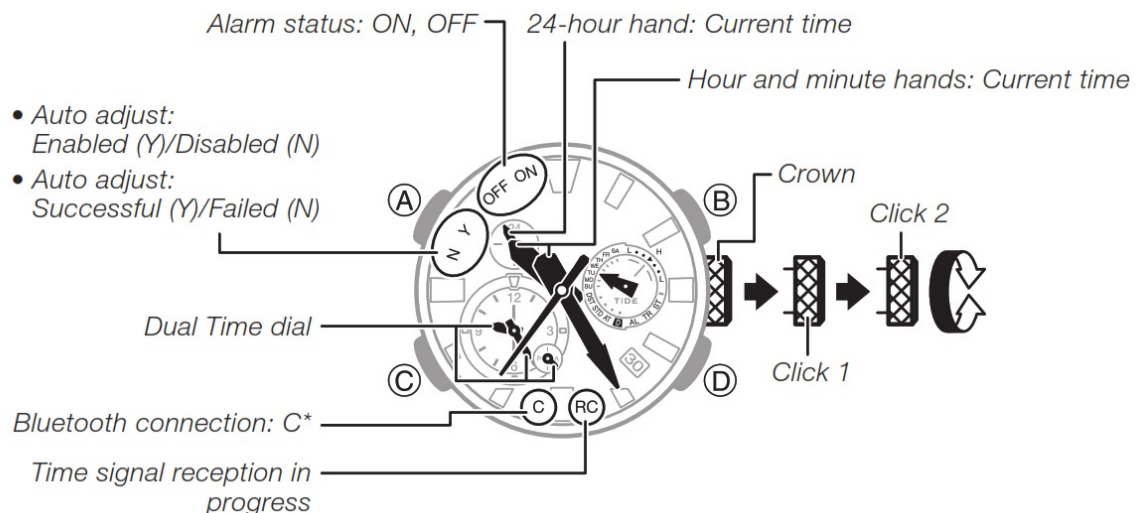
Power Saving

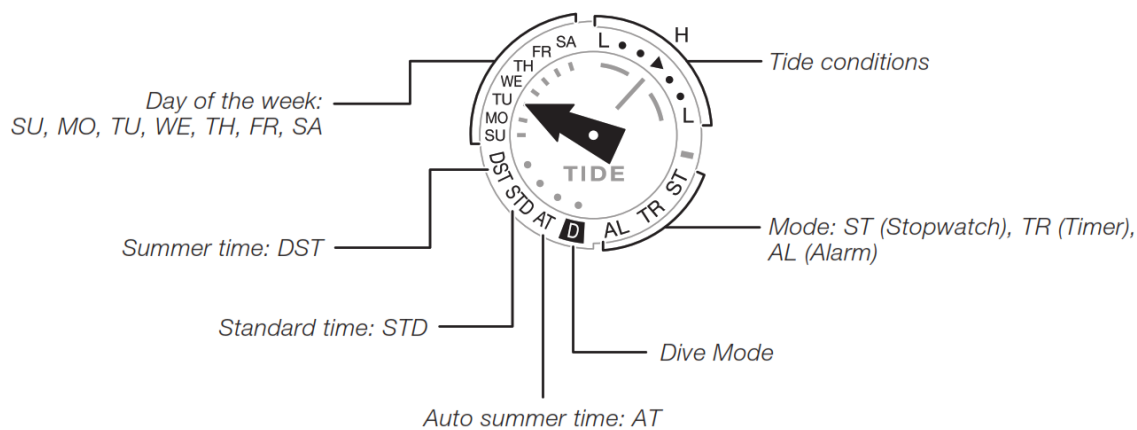
- Leaving the watch in a dark location for about one hour between the hours of 9 p.m. and 6 a.m. will cause the second hand to stop at 12 o'clock.
- Leaving the watch in a dark location for about one week will cause all hands to stop.

Battery Alerts

- Low Battery – Second-hand jumps every two seconds (Low Battery Alert).
- Dead Battery – All hands stopped.

General Guide

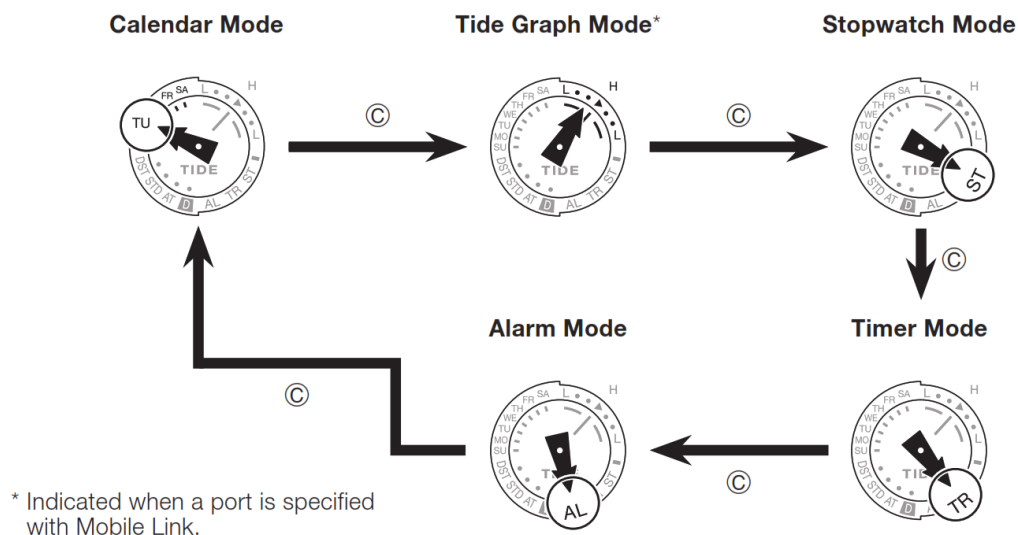




Selecting a Mode

Each press of © cycles between modes as shown below.

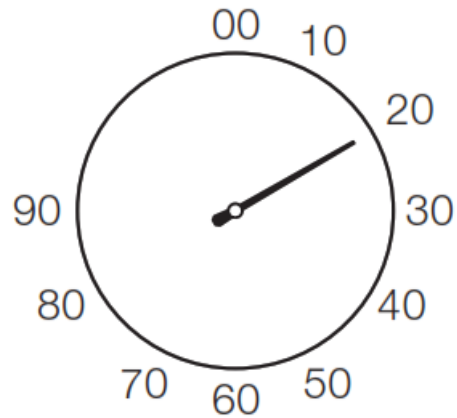
- Hold down © for at least one second to enter the Calendar Mode.
- Hold down © for at least two seconds to enter the Diving Mode.



Setting the Time

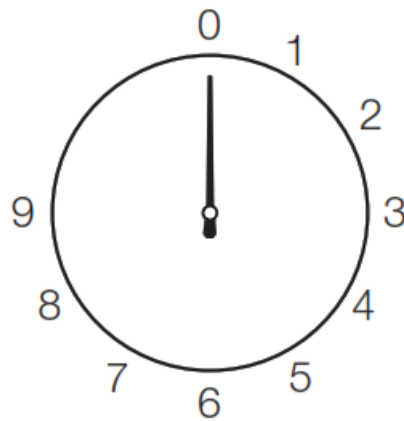
1. Rotate the crown towards you to loosen it.
2. Pull the crown out to the second click.
3. Hold down © for at least one second.
 - x This enables the setting of the hour and minute.
4. Rotate the crown to change the current minute setting.
5. Press ©.
 - x This enables the setting of the hour.
6. Rotate the crown to change the current hour setting.
 - x The 24-hour hand indicates whether a time setting is a.m. (A) or p.m. (P).
7. Press ©.
 - x This enables the year 10's digit setting.
8. Rotate the crown to change the year 10's digit setting.

Year 10's Digit Setting

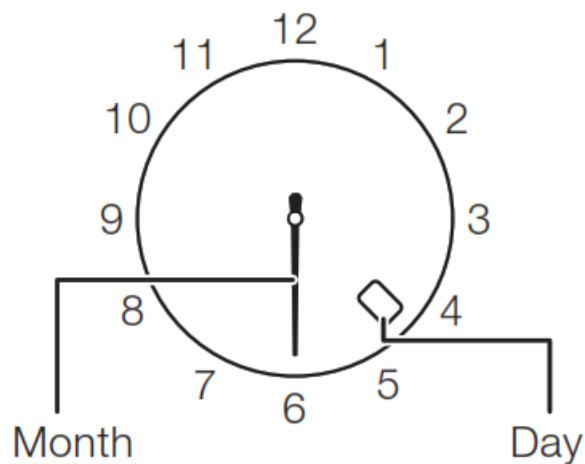


9. Press C. x This enables the year 1's digit setting.
10. Rotate the crown to change the year 1's digit setting.
11. Press C. x This enables the month setting.
12. Rotate the crown to change the month setting.
13. Press C.
 - x This enables the day setting.
14. Rotate the crown to change the day setting.
15. After the settings are the way you want, push the crown back in and then screw it securely into place.

Year 1's Digit Setting

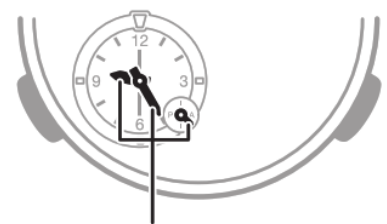


Month Setting



Changing the Dual Time, Alarm Time, or Timer Time Setting

1. Use C to navigate to the mode whose time setting you want to change.
2. Rotate the crown towards you to loosen it.
3. Pull the crown out to the first click.
4. Rotate the crown to move the hands to the time you want to set.
5. After the setting is the way you want, push the crown back in and then screw it securely into place.



Specifications

Accuracy at Normal Temperature: ± 15 seconds a month

Timekeeping: Hour, minute (hands move at 5-second intervals), second; date, day of the week

Calendar system: Full-auto calendar from 2000 to 2099 Others: Dual time (hour, minute, 24-hour timekeeping, 27 time zones, auto summertime setting, Home Time/Dual Time swapping)

Signal Receive Function:

Auto receive, manual receive

Auto transmitter selection (for JJY, MSF/DCF77)

Receivable call signs: JJY (40 kHz/60 kHz), BPC (68.5 kHz), WWVB (60 kHz), MSF (60 kHz), DCF77 (77.5 kHz)

Tide Graph Function: Tide level/high tide time selection

Stopwatch:

Measuring unit: 1 second

Measuring capacity: 23:59'59" (24 hours)

Alarm:

Setting units: Hour, minute

Beeper: 10 seconds

Countdown Timer:

Countdown unit: 1-second

Countdown range: 24 hours

Setting unit: 1 minute

Time up: 10-second beeper

Diving Function:

Dive time measurement: Up to 2 hours (1-second units)

Surface time display: Up to 24 hours

Log memory: 30 records (dive start and end dates and times, or surface start and end dates and times)

Mobile Link Functions:

Auto Time Correction

Phone finder

Watch operation sounds the alert sound of the mobile phone.

World Time

The current time for approximately 300 cities selected for the watch

Home Time/World Time swapping

Auto summertime switching

Automatic switching between standard time and summertime

Tide Graph (6 levels)

Information on approximately 3,300 global locations

Timer Setting

Alarm Setting

Hand position correction

Data Communication Specifications

Bluetooth®

Frequency Band: 2400MHz-2480MHz

Maximum Transmission: 0 dBm (1 mW)

Communication range: 2 meters max. (depends on environment)

Other: Power Saving, High-brightness LED light, Auto-Correction of Hand Home Positions, Hand Shift

Power Supply: Solar panel and 1 rechargeable battery

Battery Operating Time:

Approximately 5 months

Conditions

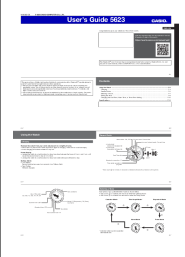
Not exposed to light under the conditions below.

- Bluetooth connection time: 10 hours/day
- Alarm: Once (10 seconds)/day
- Illumination: Once (3 seconds)/day
- Hand sleep: 6 hours/day
- Diving: 3 dives/month
- Dive time measurement: 45 minutes/dive
- Surface time measurement: 15 minutes/dive
- Illumination: 6 seconds (3 seconds × 2)/dive

Note that battery operating time may be reduced by illumination conditions and by dive time and Bluetooth connection duration.

Specifications are subject to change without notice.

Documents / Resources

	<p>CASIO QW-5623 [pdf] User Guide QW-5623</p>
---	--

References

- [C About Conformity of Radio Law | Corporate | CASIO](#)
- [C Timepieces \(Watches\) - Manual - CASIO Worldwide](#)

Manuals+.