



CASETiFY CTF-T-ATE-232120FRE 2 In 1 Charging Stand Magsafe Compatible User Manual

[Home](#) » [CASETiFY](#) » CASETiFY CTF-T-ATE-232120FRE 2 In 1 Charging Stand Magsafe Compatible User Manual



CASETiFY CTF-T-ATE-232120FRE 2 In 1 Charging Stand Magsafe Compatible User Manual

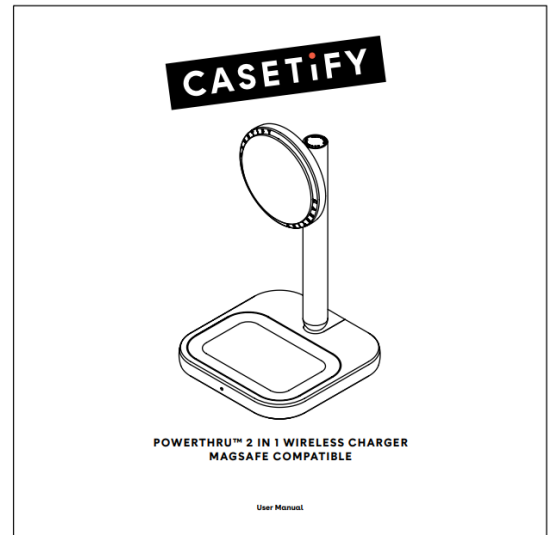
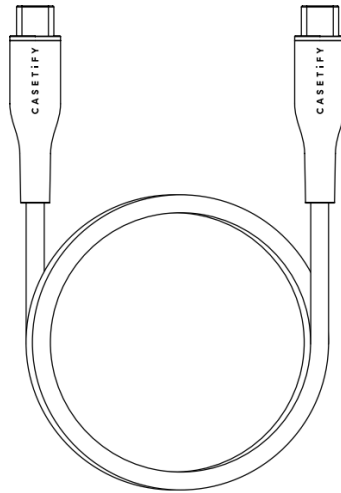
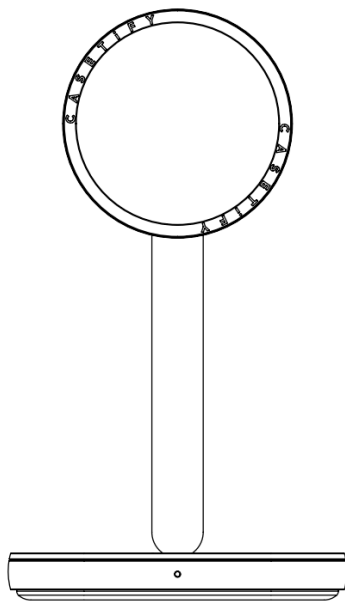


Contents

- 1 [PACKAGE CONTENTS](#)
- 2 [PRODUCT OVERVIEW](#)
- 3 [INSTRUCTIONS](#)
- 4 [SPECIFICATIONS](#)
- 5 [LED INDICATOR](#)
- 6 [ISED STATEMENT](#)
- 7 [Documents / Resources](#)
 - 7.1 [References](#)
- 8 [Related Posts](#)

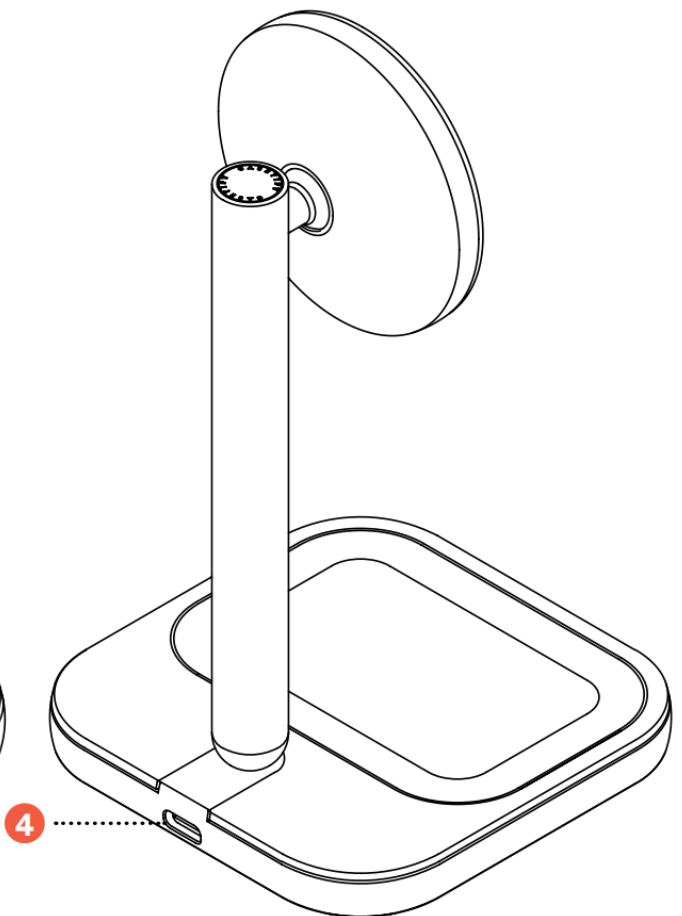
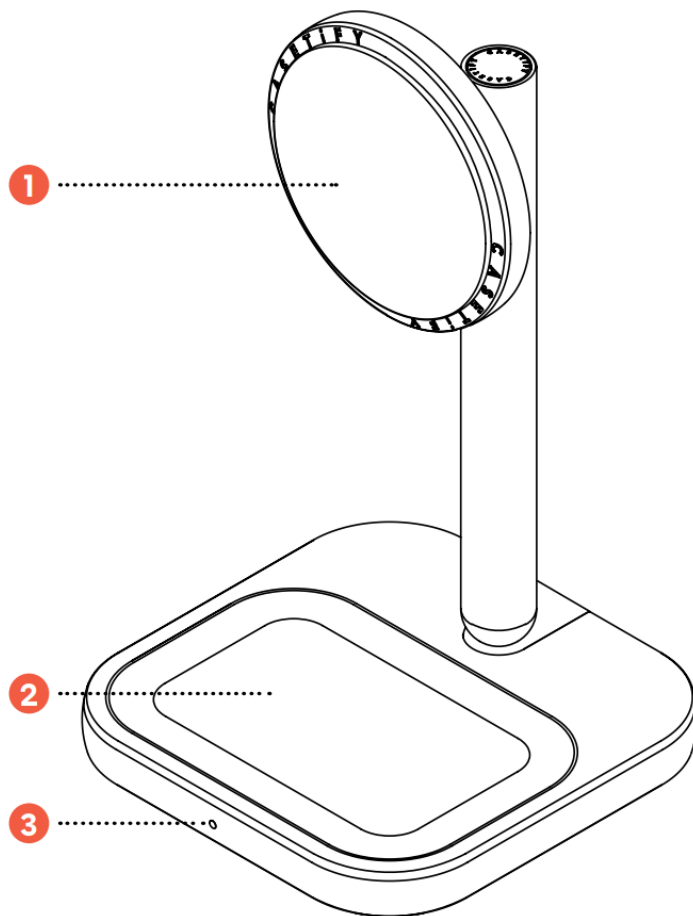
PACKAGE CONTENTS

1. PowerThru™ 2-in-1 Charging Stand MagSafe Compatible
2. Charging Cable
3. User Manual

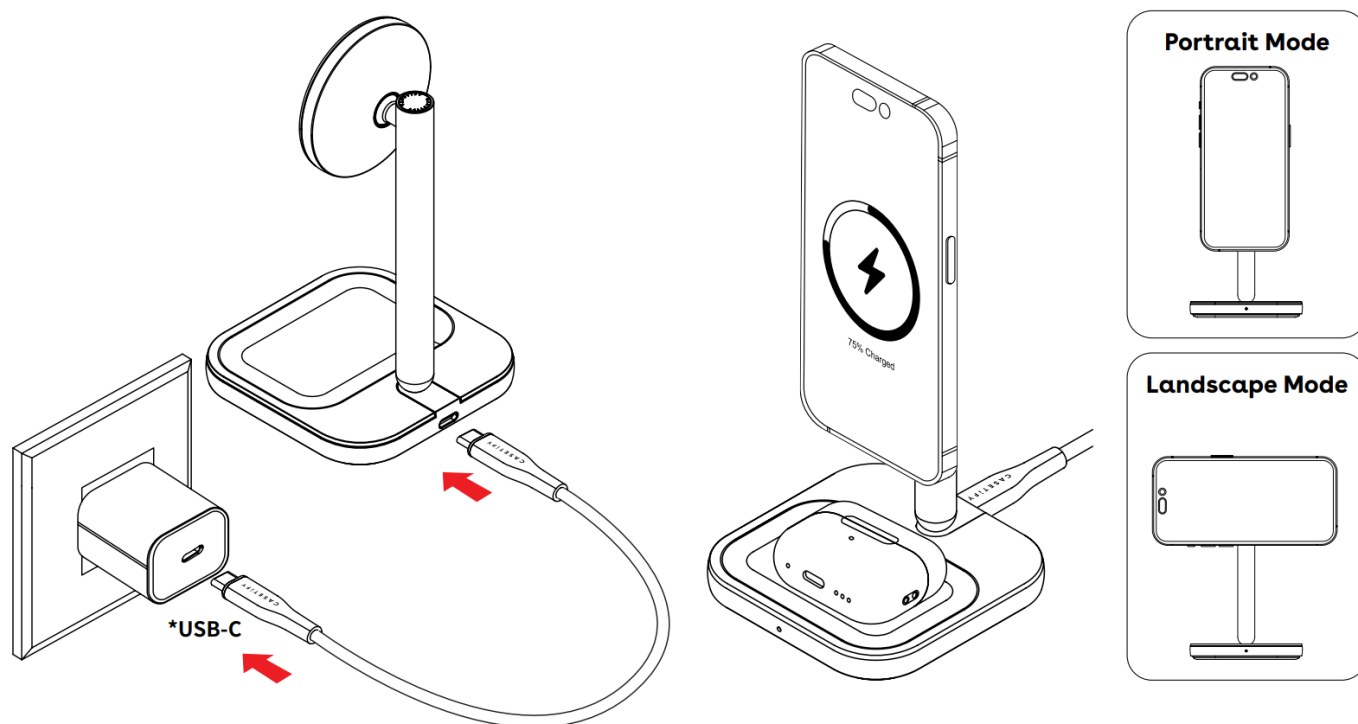


PRODUCT OVERVIEW

1. Magnetic Charging Pad
2. LED Indicator
3. Earbud Charging Pad
4. USB C Charging Port



INSTRUCTIONS



Step : 1

Before Use

Connect power supply via USB-C Cable

* Power supply is not included

Step : 2

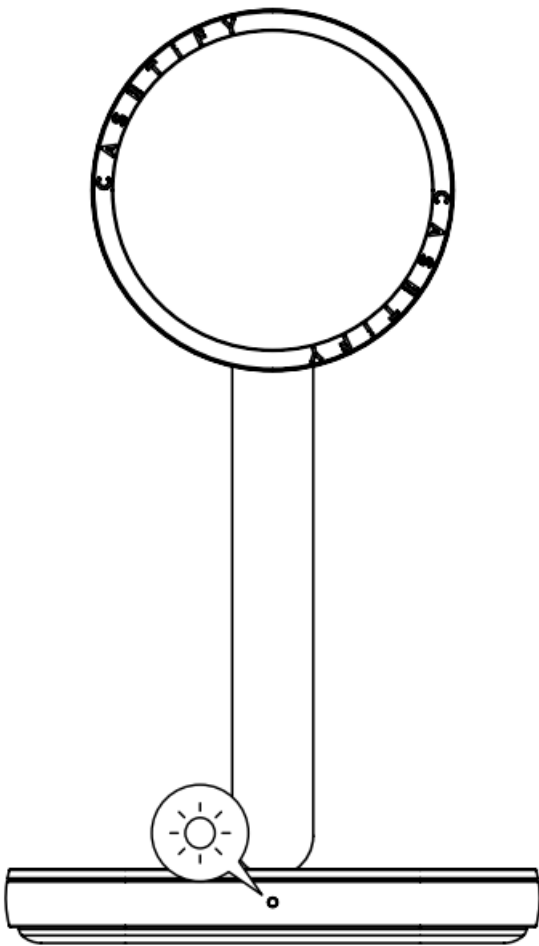
Place your mobile phone & earbuds case to appropriate charging location.

SPECIFICATIONS

Model No	CTF-T-ATE-232120FRE
Product	CTF-T-ATE-232120FREWHX
Input	5V 3A/9V 3A/12V 2A
Output 1	5W / 7.5W / 10W / 15W Max
Output 2	5W Max
Charging Distance	≤6mm
Frequency Band	110k Hz – 205k Hz
Working Temperature	0 – 40°C
Storage Temperature	-10 – 60°C
Size	165 x 92 x 92 (mm)
Weight	360g

Compatibility

This Wireless charging base is optimized to work with devices with Qi wireless charging technology. Magnetic Snap function compatible with iPhone 12 and later series.



LED INDICATOR

LED On For 5 Seconds: Connected to power supply

Breathing Light: Charging

Blinking Light: Abnormal charging/ foreign object detected



IMPORTANT SAFETY INSTRUCTIONS

Please read all instructions and warnings prior to using this product. Improper use of this product may result in product damage, excess heat, toxic fumes, fire or explosion, for which damages you, Purchaser, and Manufacturer are responsible.

- Do not store device in high-temperature environment, including heat sources and intense sunlight. Do not place device close to fire or other excessively hot environments.
- Do not expose the wireless charging stand to humid environment, including rain or snow.
Do not use the wireless charging stand in excess of its output rating. Overloading outputs above rating may result in a risk of fire or injury to persons
- Do not disassemble or modify this product
- Do not attempt to replace any part of this product
- All products have gone through a thorough quality assurance inspection. If your product is found excessively hot, is emitting odor, is deformed, abraded, cut, or is experiencing or demonstrating an abnormal phenomenon, immediately stop all product use and contact Manufacturer.
- To comply with FCC RF exposure compliance requirements, the wireless charging stand must be used with a separation distance of at least 20 cm from all persons

- Purchaser agrees to defend, indemnify, and hold Manufacturer harmless for any claims or damages arising from unintended use or misuse by a minor.
- The wireless charger will automatically switch off when disconnected from power supply, switch off the wireless charging stand when not in use.

NOTE:

This device complies with part 15 of the FCC Rules and contains licence-exempt transmitter(s)/receiver(s) that comply with Innovation, Science and Economic Development Canada's licence-exempt RSS(s). Operation is subject to the following two conditions: (1) this device may not cause harmful interference, and (2) this device must accept any interference received, including interference that may cause undesired operation.

This device has been tested and found to comply with the limits for a Class B digital device, pursuant to Part 15 of the FCC Rules.

These limits are designed to provide reasonable protection against harmful interference in a residential installation. This equipment generates, uses, and can radiate radio frequency energy, and, if not installed and used in accordance with the instructions, may cause harmful interference to radio communications. However, there is no guarantee that interference will not occur in a particular installation. If this equipment does cause harmful interference to radio or television reception, which can be determined by turning the equipment off and on, the user is encouraged to try to correct the interference by one or more of the following measures:

- Reorient or relocate the receiving antenna.
- Increase the separation between the equipment and receiver.
- Connect the equipment to an outlet on a circuit different from that to which the receiver is connected.
- Consult the dealer or an experienced radio/TV technician for help.

ISED STATEMENT

This device contains licence-exempt transmitter(s)/receiver(s) that comply with Innovation, Science and Economic Development Canada's licence-exempt RSS(s). Operation is subject to the following two conditions:

1. This device may not cause interference.
2. This device must accept any interference, including interference that may cause undesired operation of the device.

This device complies with ISED RF radiation exposure limits set forth for an uncontrolled environment.



WARNING:

Cancer & Reproductive Harm

www.P65Warnings.ca.gov

FCC ID: 2ASRV-232120FRE

IC: 26753-232120FR

KC: R-R-YFI-CTF-T-ATE


CASETAGRAM LIMITED

18/F, NEO, 123 Hoi Bun Road, Kwun Tong, Hong Kong



www.CASETiFY.com



Documents / Resources

	CasetiFY CTF-T-ATE-232120FRE 2 In 1 Charging Stand Magsafe Compatible [pdf] User Manual CTF-T-ATE-232120FRE 2 In 1 Charging Stand Magsafe Compatible, CTF-T-ATE-232120FRE, 2 In 1 Charging Stand Magsafe Compatible, Charging Stand Magsafe Compatible, Stand Magsafe Compatible, Magsafe Compatible, Compatible
---	---

References

-  [Show Your Colors | CASETiFY](#)
-  [P65Warnings.ca.gov](#)
- [User Manual](#)