

casa systems NF18MESH CloudMesh Gateway Computer/Tablets and Networking User Guide

[Home](#) » [casa systems](#) » casa systems NF18MESH CloudMesh Gateway Computer/Tablets and Networking User Guide



casa systems

USB Storage Setup Guide

NF18MESH

Doc No. FA01257

Contents

- 1 Copyright
- 2 Document history
- 3 Storage Service
 - 3.1 Storage Device Info
 - 3.2 Log in to the web interface
- 4 Documents / Resources
 - 4.1 References
- 5 Related Posts

Copyright

Copyright© 2021 Casa Systems, Inc. All rights reserved.

The information contained herein is proprietary to Casa Systems, Inc. No part of this document may translate, transcribed, reproduced, in any form, or by any means without the prior written consent of CSystems, Inc.

Trademarks and registered trademarks are the property of Casa Systems, Inc or their respective subsidiary specifications are subject to change without notice. Images shown may vary slightly from the actual product. Previous versions of this document may have been issued by NetComm Wireless Limited. NetComm WirelLimited was acquired by Casa Systems Inc on 1 July 2019.



Note – This document is subject to change without notice.

Document history

This document relates to the following product:

Casa Systems NF18MESH

Ver.	Document description	Date
v1.0	First document release	23 June 2020
v1.1	Added option to enable SAMBA	1 April 2021
v1.2	Added note about SAMBA version support	6 April 2021

Storage Service

The Storage Service options enable you to manage attached USB Storage devices and create accounts to access the data stored on the attached USB device.

Storage Device Info

The storage device info page displays information about the attached USB Storage device.

Log in to the web interface

1. Open a web browser (such as Internet Explorer, Google Chrome, or Firefox), type the following address into the address bar, and press enter.

<http://cloudmesh.net> or <http://192.168.20.1>

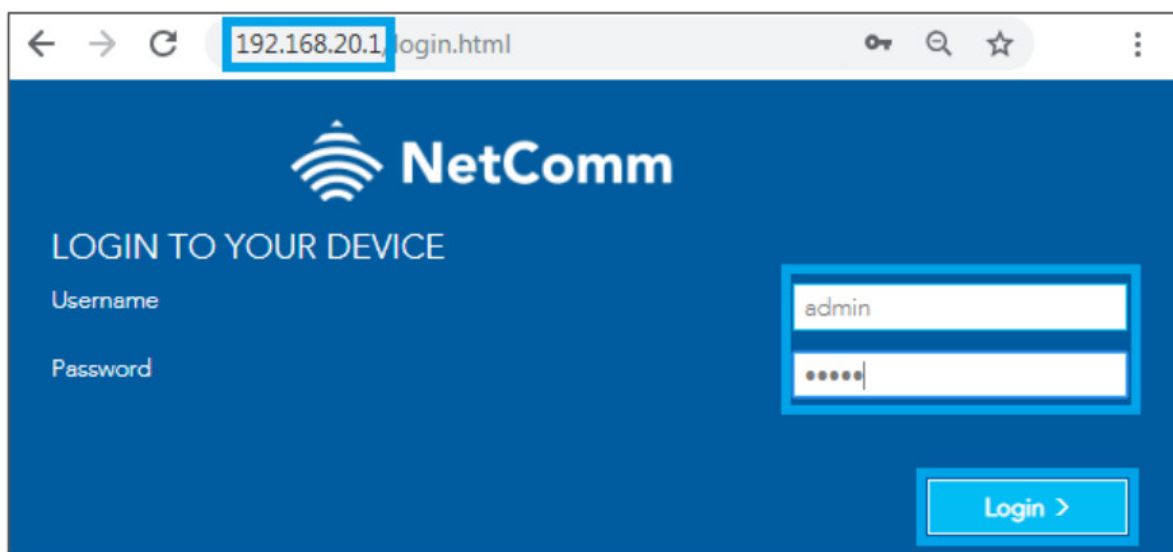
Enter the following credentials:

Username: admin

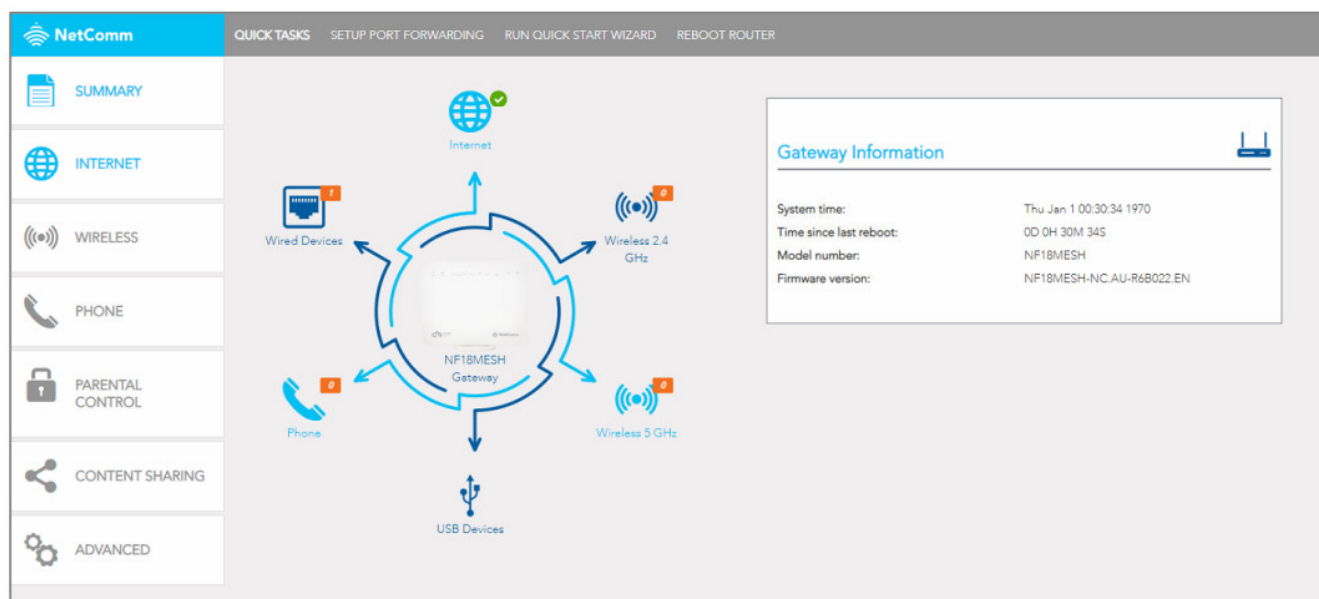
Password: <The password printed on the back of the modem>

then click the **Login** button.

NOTE – Some Internet Service Providers use a custom password. If login fails, contact your Internet Service Provider. Use your own password if it is changed.



2. Click on the Content Sharing menu at the left of the page.



3. Enable **Samba (SMB) Share** and provide user account details.
Click the **Apply/Save** button to create a user account.

NetComm QUICK TASKS SETUP PORT FORWARDING RUN QUICK START WIZARD REBOOT ROUTER LOG OUT

Available Shares

1 USB Device Name
USB File System
USB Sharing Support

Sharing Options

Note that sharing options will be applied to all available drives.

UPnP: ☒ Enable ☐ Disable

DLNA: ☐ Enable ☒ Disable

Name: NetComm Media

Samba (SMB) share: ☒ Enable ☐ Disable

Name: /mnt/disk1_1

Add User

Username: user1

Password: admin

Current Users:

Apply/Save

- Adding an account allows the creation of specific user accounts with a password to further control access permissions.

NetComm QUICK TASKS SETUP PORT FORWARDING RUN QUICK START WIZARD REBOOT ROUTER LOG OUT

Available Shares

1 USB Device Name
USB File System
USB Sharing Support

Sharing Options

Note that sharing options will be applied to all available drives.

UPnP: ☒ Enable ☐ Disable

DLNA: ☐ Enable ☒ Disable

Name: NetComm Media

Samba (SMB) share: ☒ Enable ☐ Disable

Name: /mnt/disk1_1

Add User

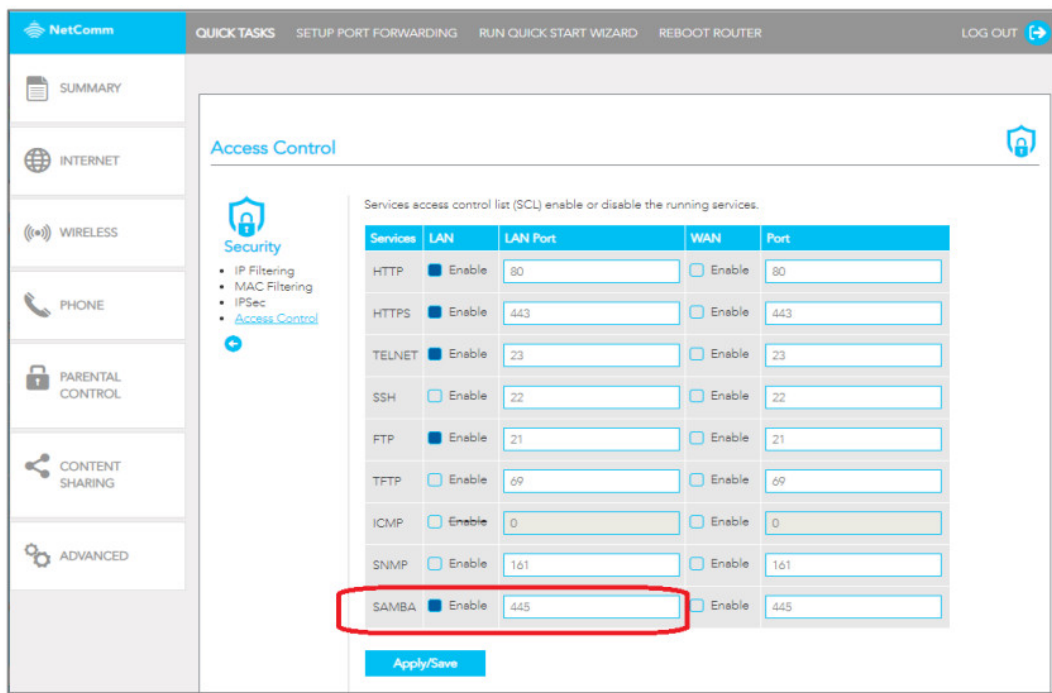
Username:

Password:

Current Users: ● user1

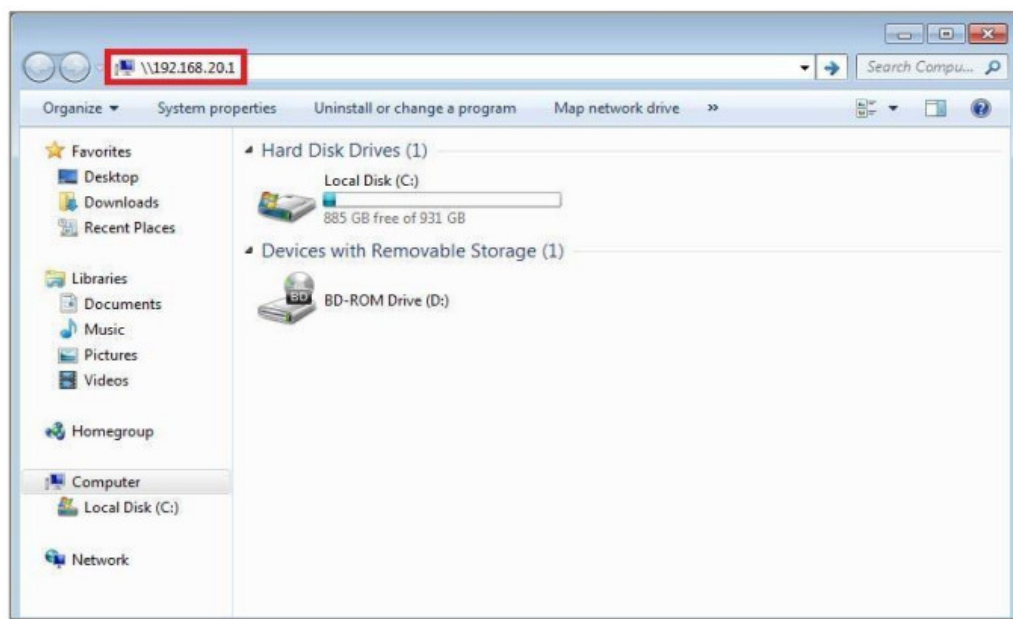
Apply/Save

- Navigate to ADVANCED-> Access Control-> SAMBA(LAN). Ensure that the SAMBA Service is Enabled and click Apply/Save. Note that the NF18MESH only supports SAMBA version 1.



Accessing USB hard drive Connected to NF18MESH using a Windows PC

1. Exit out from the NetComm router's WEB Interface page and open up the "Windows Explorer" and type \\192.168.20.1 on the top address bar.



Note – Windows Explorer is different from Internet Explorer. You can open a Windows Explorer by opening a Computer or Documents.

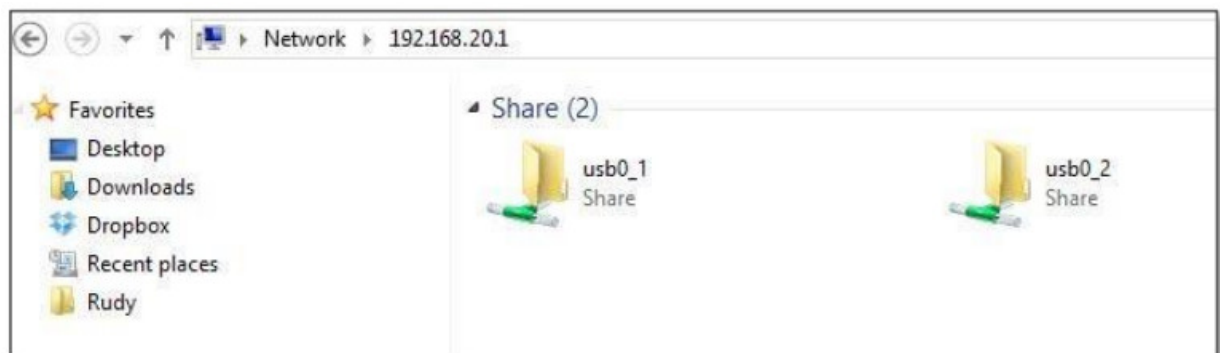


Important – Turn off firewall/ antivirus firewall if it has no connection to USB storage through Wireless.

2. When prompted for login details, type the Storage User Account **Username** and **Password**. The example below uses "user1" as the username.

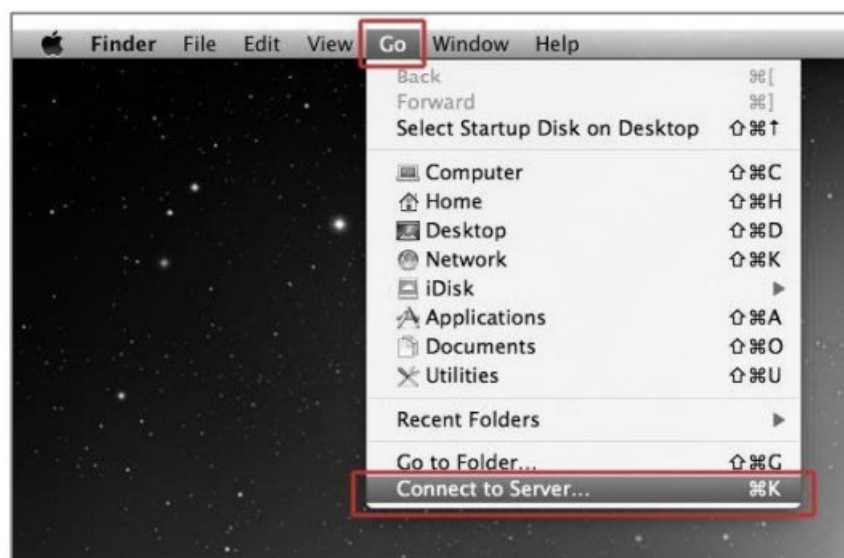


3. Once you have **logged in**, you will be able to **view and edit** the contents of the USB storage device.

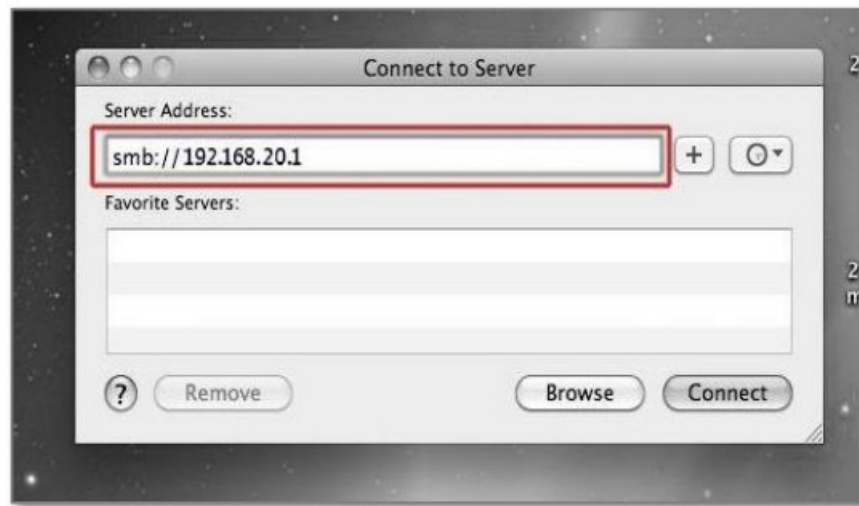


Accessing USB hard drive Connected to NF18MESH using a Mac PC

1. On your, Mac click on **Go >Connect to a Server**.



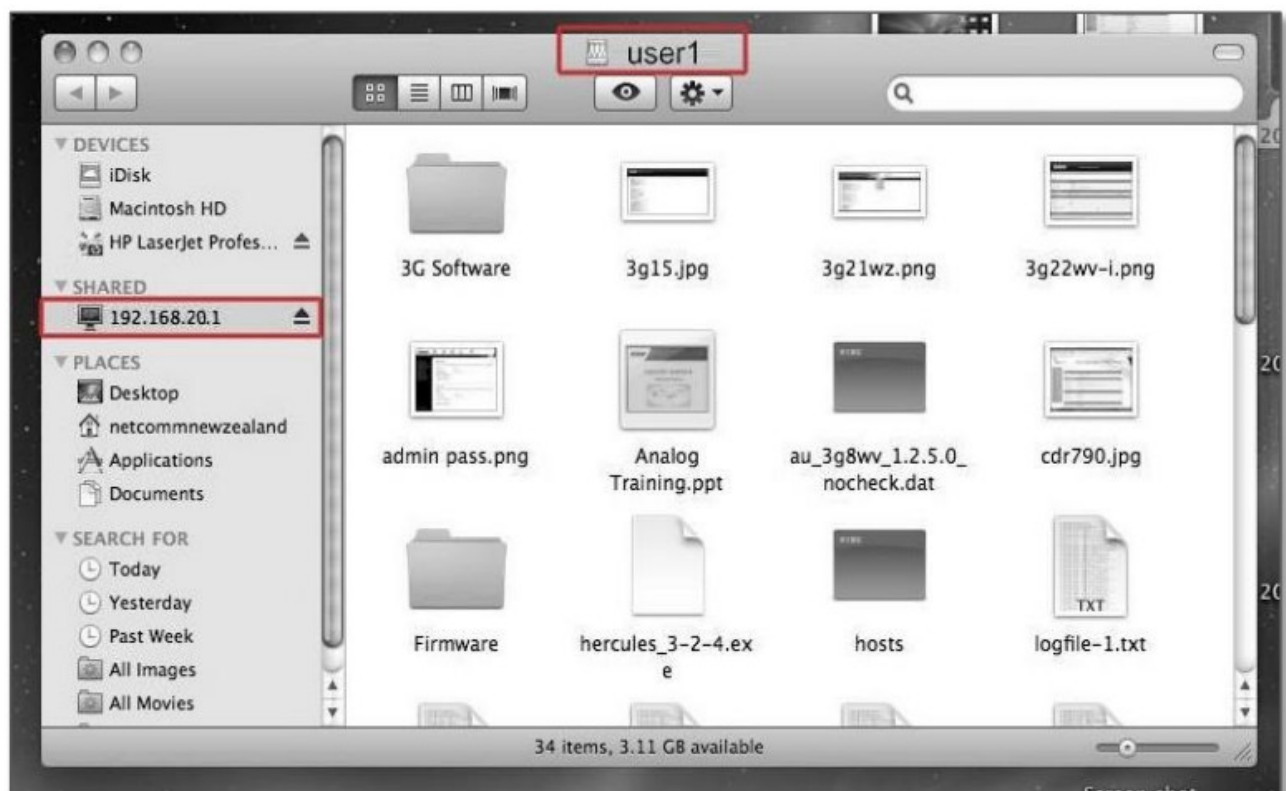
2. Enter the path to the network drive you want to map, i.e.: `smb://192.168.20.1` then click **Connect**.



3. Enter your Storage User Account **Username** and **Password** as shown below and click the **Connect** button to mount the network drive.




4. The drive will now appear on your **finder window sidebar**.



NF18MESH – USB Storage Setup Guide

FA01257 v1.2 6 April 2021

Documents / Resources

	<p>casa systems NF18MESH CloudMesh Gateway Computer/Tablets and Networking [pdf] User Guide NF18MESH, CloudMesh Gateway Computer Tablets and Networking</p>
---	---

References

- cloudmesh.net/