

CAS CL7200 Variable Field Length Setup For Labels User Guide

CAS CL7200 Variable Field Length Setup For Labels User Guide

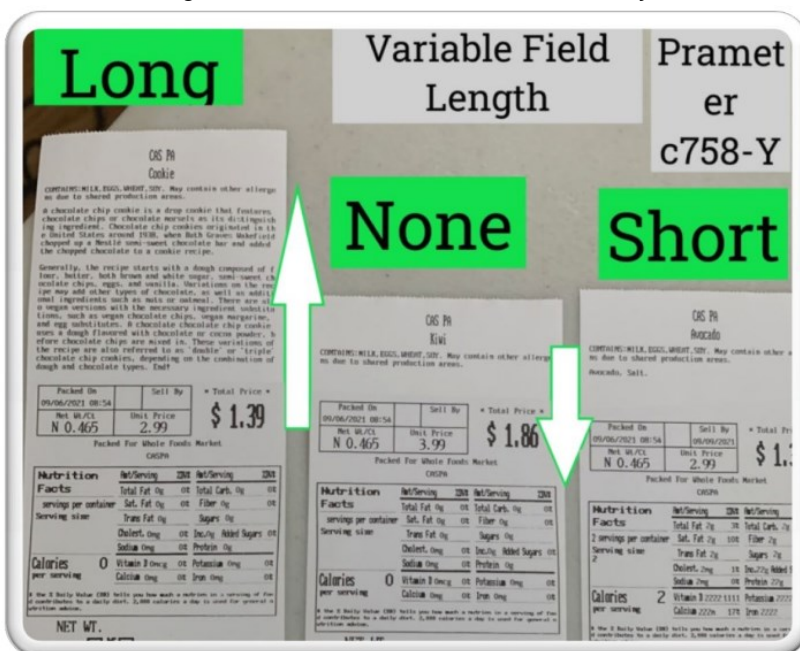


Contents

- 1 Intro- Variable Ingredient Field Lengths'
- 2 Check Version and Update
- 3 Changes in Label Editor
- 4 Troubleshooting
- 5 Documents / Resources
 - 5.1 References
- 6 Related Posts

Intro- Variable Ingredient Field Lengths'

With Variable Ing. Fields, the CL7200 will now auto adjust the label length(when using Cont. label mode.)



This guide will walk you through updating your existing labels to utilize this new feature.

This guide applies to:

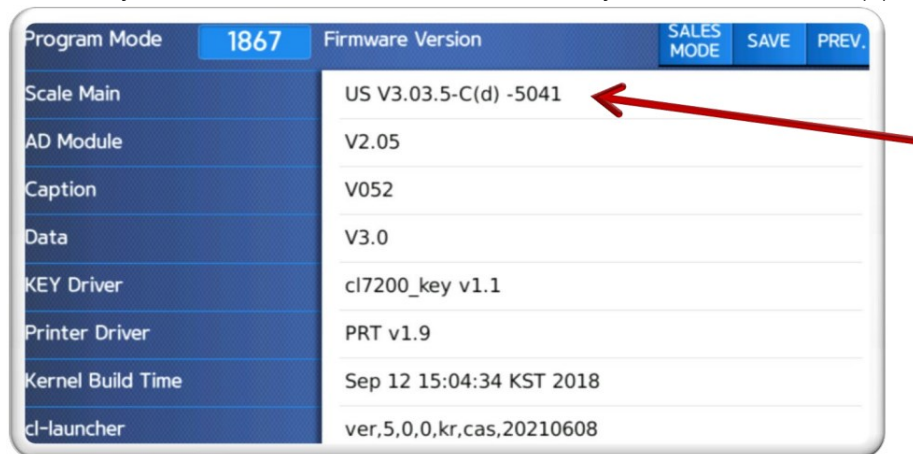


For more information about this update **AND** to browse our how-to videos, please visit our updated website.

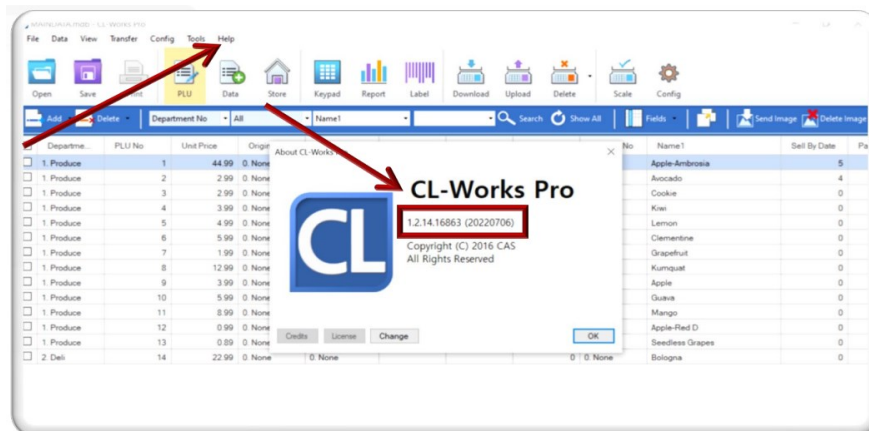
Check Version and Update

Its important to first make sure you have the latest update for both the firmware and CL Works Pro.

To check your scale use MENU 1867 and ensure you have: V3. 03.5-C(d) – 5041 or higher.



To check your software version of CL Works Pro. Open the software, select from the top task-bar, **HELP**, then **ABOUT** to check that you have this version or higher.



Once you have confirmed you have the latest software/firmware you are ready to edit your labels.

Changes in Label Editor

To get started, open the Label Editor. Next, open one of your existing Custom Labels.

Select the **INGREDIENT** field and follow the example shown. Shrink the text box for this field until only 1 line or so of text shows.

CRS Shop French Bread

CONTAINS: MILK, EGGS, WHEAT, SOY. May contain other allergens due to shared production areas.

INGREDIENT: Water, Enriched Flour (Bleached Flour, Wheat Flour, Thiamine Mononitrate, Riboflavin), Hydrogenated Vegetable Oil (Soybean or Cottonseed), Sugar, Dextrose, Baking Powder (Sodium Acid Pyrophosphate, Baking Soda), modified C

Packed On: 2004-10-13 13:30 | Sell By: 2004-10-13 | Net Wt./Cl.: 99 | Unit Price: 999999 | Total Price: 999999

Packed For Whole Foods Market
Best shop

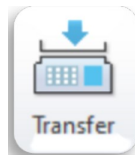
Nutrition Facts

	Per Serving	% Daily Value	Per Serving	% Daily Value
Total Fat	99g	99%	Total Carb	99g
Sat. Fat	99g	99%	Fiber	99g
Trans Fat	99g	99%	Sugars	99g
Cholest.	99g	99%	Inc. 99g Added Sugars	99g
Sodium	99g	99%	Protein	99g
Vitamin D	99g	99%	Potassium	99g
Calcium	99g	99%	Iron	99g

Calories 999 per serving

If the % Daily Value (DV) tells you how much a nutrient in a serving of food contributes to a daily diet. 2,000 calories a day is used for general nutrition advice.

he



SAVE your changes and **Transfer** to the scale.

Test your updated labels with **PLU's** that have various **INGREDIENT** lengths. If done correctly, they should look similar to the examples shown when printed. The label lengths for items with no or small ingredients will be shorter than PLU's with longer ones.

CRS Shop French Bread

CONTAINS: MILK, EGGS, WHEAT, SOY. May contain other allergens due to shared production areas.

Long ingredient

INGREDIENT: Milk Chocolate Chip, Cocoa Butter, Cocoa Lipo, Non-Fat Milk, Milk Fat, Lactose, Lecithin (Soy), PVP, Emulsifier, Potassium Sorbate, Sugar, Dextrose, Partially Hydrogenated Vegetable Oil (Soybean or Cottonseed), Baking Powder (Sodium Acid Pyrophosphate, Baking Soda), modified C

Packed On: 2004-10-13 13:30 | Sell By: 2004-10-13 | Net Wt./Cl.: 99 | Unit Price: 999999 | Total Price: 999999

Packed For Whole Foods Market
Best shop

Nutrition Facts

	Per Serving	% Daily Value	Per Serving	% Daily Value
Total Fat	99g	99%	Total Carb	99g
Sat. Fat	99g	99%	Fiber	99g
Trans Fat	99g	99%	Sugars	99g
Cholest.	99g	99%	Inc. 99g Added Sugars	99g
Sodium	99g	99%	Protein	99g
Vitamin D	99g	99%	Potassium	99g
Calcium	99g	99%	Iron	99g

Calories 999 per serving

If the % Daily Value (DV) tells you how much a nutrient in a serving of food contributes to a daily diet. 2,000 calories a day is used for general nutrition advice.

Short ingredient

INGREDIENT: Milk Chocolate Chip, Cocoa Butter, Cocoa Lipo, Non-Fat Milk, Milk Fat, Lactose, Lecithin (Soy), PVP, Emulsifier, Potassium Sorbate, Sugar, Dextrose, Partially Hydrogenated Vegetable Oil (Soybean or Cottonseed), Baking Powder (Sodium Acid Pyrophosphate, Baking Soda), modified C

Packed On: 2004-10-13 13:30 | Sell By: 2004-10-13 | Net Wt./Cl.: 99 | Unit Price: 999999 | Total Price: 999999

Packed For Whole Foods Market
Best shop

Nutrition Facts

	Per Serving	% Daily Value	Per Serving	% Daily Value
Total Fat	99g	99%	Total Carb	99g
Sat. Fat	99g	99%	Fiber	99g
Trans Fat	99g	99%	Sugars	99g
Cholest.	99g	99%	Inc. 99g Added Sugars	99g
Sodium	99g	99%	Protein	99g
Vitamin D	99g	99%	Potassium	99g
Calcium	99g	99%	Iron	99g

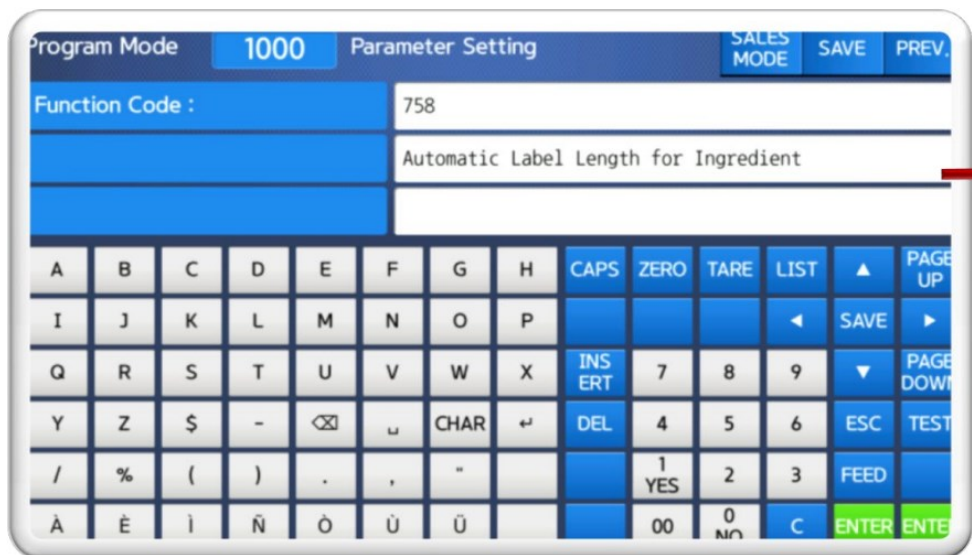
Calories 0 per serving

If the % Daily Value (DV) tells you how much a nutrient in a serving of food contributes to a daily diet. 2,000 calories a day is used for general nutrition advice.

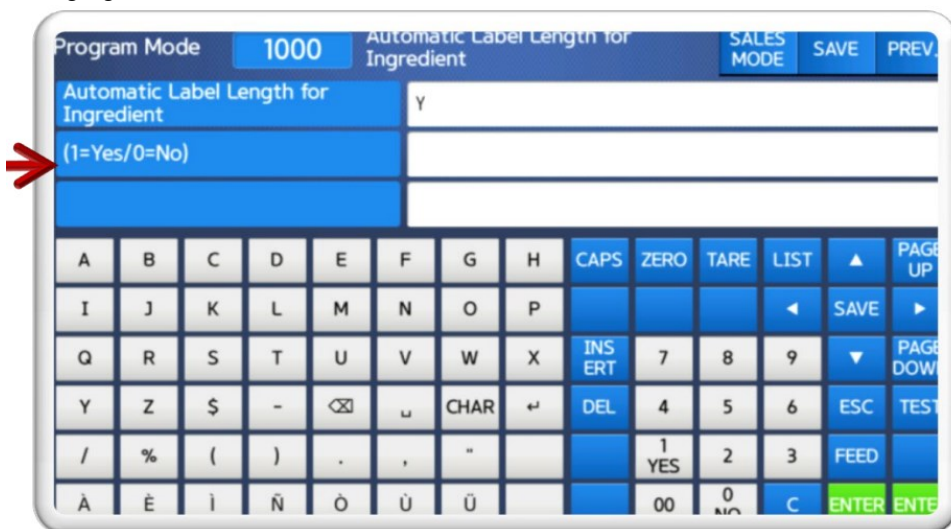
Troubleshooting

If the changes are not visible on your label, check that you adjusted the text and make sure field items aren't overlapping excessively. If there is still no effect, check the following **PARAMETER**

From the Parameter Setting menu, enter 758 and ensure it is set to **Y**.



***Note:** Variable lengths are only for Continuous Label Mode and 'should' auto switch on/off this parameter when changing modes.



If you are still having issues after checking the parameter menu, reach out to your local dealer. If you dont have a dealer, please reach out to us directly. E-mail your details to: sales@cas-usa.com. Thank you!

Documents / Resources

	<p>CAS CL7200 Variable Field Length Setup For Labels [pdf] User Guide</p> <p>CAS CL7200 Variable Field Length Setup For Labels, CL7200, Variable Field Length Setup For Labels, CL7200 Variable Field Length Setup</p>
---	---

References

- [USA Location information - USA.com](#)
- [CAS - Advanced Weighing Products | CAS Corporation](#)