



CARVIN K15 Keyboard Amp Instruction Manual

[Home](#) » [CARVIN](#) » CARVIN K15 Keyboard Amp Instruction Manual 

Contents

- [1 CARVIN K15 Keyboard Amp](#)
- [2 SAFETY INSTRUCTIONS \(EUROPEAN\)](#)
- [3 LIMITED WARRANTY](#)
- [4 REPLACEMENT PARTS LIST](#)
- [5 K15 KEYBOARD AMP SPECIFICATIONS](#)
- [6 K15 FRONT PANEL FEATURES](#)
- [7 Documents / Resources](#)
 - [7.1 References](#)



CARVIN

CARVIN K15 Keyboard Amp



CAUTION

RISK OF ELECTRIC SHOCK DO NOT OPEN

-  This symbol is intended to alert the user to the presence of uninsulated “dangerous voltage” within the product’s enclosure that may be of sufficient magnitude to constitute a risk of electric shock to persons.
-  This symbol is intended to alert the user to the presence of important operating and maintenance (servicing) instructions in the literature accompanying the appliance.

IMPORTANT! FOR YOUR PROTECTION, PLEASE READ THE FOLLOWING

- **WATER AND MOISTURE:** Appliance should not be used near water (near a bathtub, washbowl, kitchen sink, laundry tub, in a wet basement, or near a swimming pool, etc). Care should be taken so that objects do not fall and liquids are not spilled into the enclosure through openings.
- **POWER SOURCES:** The appliance should be connected to a power supply only of the type described in the operating instructions or as marked on the appliance.
- **GROUNDING OR POLARIZATION:** Precautions should be taken so that the grounding or polarization means of an appliance is not defeated.
- **POWER CORD PROTECTION:** Power supply cords should be routed so that they are not likely to be walked on or pinched by items placed upon or against them, paying particular attention to cords at plugs, convenience receptacles, and the point where they exit from the appliance.

- **SERVICING:** The user should not attempt to service the appliance beyond that described in the operating instructions. All other servicing should be referred to qualified service personnel.
- **FUSING:** If your unit is equipped with a fuse receptacle, replace only with the same type fuse. Refer to replacement text on the unit for correct fuse type.

SAFETY INSTRUCTIONS (EUROPEAN)

- The conductors in the AC power cord are colored in accordance with the following code.
- GREEN & YELLOW—Earth BLUE—Neutral BROWN—Live
- U.K. MAIN PLUG WARNING: Amolded main plug that has been cut off from the cord is unsafe.
- NEVER UNDER ANY CIRCUMSTANCES SHOULD YOU INSERT A DAMAGED OR CUT
- MAIN PLUG INTO A POWER SOCKET.

LIMITED WARRANTY

Your Carvin product is guaranteed against failure for ONE YEAR unless otherwise stated. Carvin will service and supply all parts at no charge to the customer providing the unit is under warranty. Shipping costs are the responsibility of the customer. CARVIN DOES NOT PAY FOR PARTS OR SERVICING OTHER THAN OUR OWN. A COPY OF THE ORIGINAL INVOICE IS REQUIRED TO VERIFY YOUR WARRANTY. Carvin assumes no responsibility for horn drivers or speakers damaged by this unit. This warranty does not cover, and no liability is assumed, for damage due to: natural disasters, accidents, abuse, loss of parts, lack of reasonable care, incorrect use, or failure to follow instructions. This warranty is in lieu of all other warranties, expressed or implied. No representative or person is authorized to represent or assume for Carvin any liability in connection with the sale or servicing of Carvin products. CARVIN SHALL NOT BE LIABLE FOR INCIDENTAL OR CONSEQUENTIAL DAMAGES.

SERVICE

In the USA, please call 800-235-2235 for a RMA # (return authorization number). Write this number on the box and enclose a description of the problem. Prepay to Carvin 12340 World Trade Drive, SD, CA 92128. Outside the USA, contact your dealer or go to <http://www.carvinworld.com> for your nearest service center. Include a written description of the problem with serial number and date of purchase.

HELP SECTION

1. AMP WILL NOT TURN ON

Check the power to the amp. Check for tripped circuit breakers, unplugged extension cords or power-strip switches that may be turned off. After you have verified there is AC power and the amp still doesn't work, your unit will require servicing.

2. MAINTENANCE

To bring back the new look, your K15 front panel can be wiped with mild detergent and/or a warm damp soft cloth. This will remove normal dust and oil from the cabinet. Never spray cleaners or detergents directly at the electronic controls. The K15 is virtually sealed from outside dust and dirt, but it is recommended to keep the unit free from excessive dust, dirt, and moisture as much as possible.

REPLACEMENT PARTS LIST

CAUTION

RISK OF ELECTRIC SHOCK

REFER SERVICING TO QUALIFIED SERVICE PERSONNEL! THIS UNIT CONTAINS HIGH VOLTAGE INSIDE!

80-71 00 4A	PCB ASSY MAIN K15 SMT 1 EACH SPACER PAD .1X .4X .75 W /ADHSV SPACER UNDER PL1	49-102 12	C15 1 EACH 0.001UF SMT 10% FILM 0 805 50V C61	58-100 55	"R111, R120, R121 , R125," "R134, R53 5, R37, R137" 4 EACH 100K SMT .25W 1206 1%	60-221 00 60-250 11	1 EACH IC PRIMA RY VIPER 100 VP 1 1 EACH IC OPTO COUPLER ISOLA TOR
03-49 55 3	4 EACH TAPE W/A DHSVE 3M .375 X .375	49-103 12	6 EACH 0.01UF S MT 10% FILM 080 550V		"R77, R79, R69, R3 6"		OP2
03-50 13 5	1 EACH STANDOF F LED .500 X .135 T1, D1		"C33, C64, C93, C 95, C104, C76"	58-100 65	3 EACH 1M SMT .2 5W 1206 1%	60-400 02	1 EACH THERMISTOR 40 ohm 2amp 20%
03-60 04 3	1 EACH SIL PAD W/ADHESIVE 9 MI L	49-104 51	9 EACH 0.1 uF S MT 10% FILM 120 6 50V		"R166, R168, R93"		TR1
	STICK TO VP1		"C23, C32, C70, C 72,"	58-150 35	6 EACH 1.5K SMT . 25W 1206 1%	61-474 30	1 EACH DIODE Z NR REG 1N4743A 13V 1W
05-22 10 2	"6 EACH POLYOL EFIN SHRINK TUB ING 1/16""		"C67, C68, C69, C 110, C134"		"R58, R59, R66, R8 6,"		Z2
06-40 05 0	3 EACH TERMINA L VERT MALE PC MTG .250	49-220 35	33 EACH SMT CA P 22uF 35v ELEC TROLITIC		"R304, R305"	60-502 00	4 EACH DIODE G EN REC 1N5402 3 A 200V
	"QC1, QC2, QC3"		"C1, C2, C3, C4, C6,"	58-150 45	7 EACH 15K SMT . 25W 1206 1%		"D14, D15, D16, D 17"
06-40 06 0	3 EACH TERMINA L 90dg MALE PC MTG .250		"C8, C9, C14, C17 , C19,"		"R3, R12, R34, R19 , R26,"	60-555 00	2 EACH TRANS 2 N5550 HV NPN 2 50V T0-92
	"QC4, QC5, QC6"		"C20, C21, C22, C 26, C34,"		"R122, R99"		"Q2, Q11"

15-00300	2 EACH INDUCTOR .3 mH DRUM CORE		"C35, C46, C47, C51, C54,"		58-15055	3 EACH 150K SMT .25W 1206 1%	60-75330	1 EACH LED GREEN DIFFUSED 3MM T-1.00
	"L7, L8"		"C55, C56, C59, C62, C91,"			"R71, R75, R147"		D1
15-27430	4 EACH BEAD W/LEAD .138Dx .35Lx 22AWG		"C100, C102, C107, C108, C111,"		58-22035	14 EACH 2.2K SMT .25W 1206 1%	60-78150-	1 * STD 1 EACH REG VOLT 15+V 1A (PREPPED)
	"L1, L2, L5, L6"		"C303, C304, C310"					Q16
15-05001	1 EACH LINE FILTER/INDUCTOR 5mH 3A, L3	49-22212	3 EACH 0.0022UF SMT 10% FILM 0805 50V			"R306, R307, R97,"	60-79150-	1 * STD 1 EACH REG VOLT 15-V 1A (PREPPED)
15-90032G	1 EACH TRANSFORMER SWITCHING 100W ,T1		"C75, C78, C106"			"R70, R72, R74, R76, R78, R96,"		Q17
21-31100	1 EACH RECEPTACLE AC W/FAST-ON CHASS	49-22312	1 EACH 0.022UF SMT 10% FILM 0805 50V			"R106, R109, R110, R116, R123"	60-80200	2 EACH DIODE 8A 200V TO-220
	PL1		C60		58-22045	19 EACH 22K SMT .25W 1206 1%		"D22, D23"
21-40000	1 EACH XLR FEMALE CONNECTOR W/O GRND	49-25152	3 EACH 220PF SMT 5% CERAMIC 0805			"R8, R11, R13, R27, R28,"	61-04737	1 EACH DIODE REG GEN 1N4737A 7.5V 1W
	J41		"C92, C139, C79"			"R29, R44, R52, R67, R94,"		Z4
21-40020	1 EACH JACK RCA DUAL PC VERTICAL MTG	49-33312	2 EACH 0.033UF SMT 10% FILM 0805 50V			"R5, R6, R18, R146,"	62-04739	3 EACH SMT DIODE ZENER 4739
	J13		"C116, C71"			"R115, R100, R105, R126, R132"		"Z8, Z9, Z10"
21-51345	1 EACH JACK .250 PHONE MONO PLASTIC, J5	49-39052	25 EACH 39PF SMT 5% CERAMIC 0805		58-27025	1 EACH 274 OHM SMT .25W 1206 1%	62-08451	1 EACH SMT ZENER DIODE 5.1 VOLT

21-52345	10 EACH JACK .250 PHONE MONO STEEL		"C5, C7, C10, C11, C16,"		R50		Z501
	"J1, J2, J3, J6,"		"C18, C24, C25, C29, C48,"	58-33045	7 EACH 33K SMT .25W 1206 1%	62-06001	3 EACH DIODE ULTRA FAST 600V 1A SMA
	"J11, J12, J21, J22, J31, J41"		"C49, C50, C52, C53, C57,"		"R7, R9, R20, R23, R48, R537, R43"		"D18, D19, D21"
21-52545	2 EACH JACK .250 PHONE STEREO STEEL		"C58, C66, C97, C99, C101,"	58-36055	1 EACH 365K SMT .25W 1206 1%	62-19140	13 EACH 1N914 HI SPD SMT 250mW DIODE
	"J4, J10"		"C128, C309, C403, C80, C133"		R73		"D2, D3, D5, D6, D9, D10, D11,"
23-03529	2 EACH FUSEHOLDER CLIPS 3AG VERT MTG, F1	49-47212	3 EACH 0.0047uF SMT FILM 0805 50V	58-39035	2 EACH 3.9K SMT .25W 1206 1%		"D12, D13, D20, D27, D28, D29"
23-11004	2 EACH CONNECT HEADER 4 PIN STRAIGHT		"C30, C63, C73"		"R40, R54"	62-20430	3 EACH NJM2043 SMT(TESTED) DUAL HFREQ
	"H4A, H4B"	49-47312	3 EACH 0.047UF SMT 10% FILM 0805 50V	58-47015	2 EACH 47.5 SMT .25W 1206 1%		"A5, A11, A12"
23-11008	2 EACH CONNECT HEADER 8 PIN STRAIGHT		"C12, C13, C74"		"R85, R151"	62-45650	14 EACH NJM4565 SMT DUAL HI FREQ
	"H1A, H1B"	49-56152	3 EACH 560PF SMT 5% CERAMIC 0805	58-47025	2 EACH 470.5 SMT .25W 1206 1%		"A1, A2, A3, A4, A6,"
23-11010	4 EACH CONNECT HEADER 10 PIN STRAIGHT		"C77, C305, C306"		"R104, R158"		"A7, A8, A9, A10, A14,"
	"H2A, H2B"	49-82052	2 EACH 82PF SMT 5% CERAMIC 0805	58-47035	3 EACH 4.7K SMT .25W 1206 1%		"A15, A16, A17, A19"
	"H3A, H3B"		"C103, C127"		"R62, R95,"	62-54001	9 EACH MMBT5401LT1 PNP SOT-23 SMT

25-02201	1 * STD 4 EACH ASSEMBLED SWITCH AND CAP	51-00050	"2 EACH RES 0.00 OHM .50X.20" JUMPER"			"R91,"		"Q3, Q4, Q5, Q6, Q9, Q10, Q12, Q14," Q18
	"S11, S21, S31, S32"		"B5, B7"		58-47045	18 EACH 47K SMT .25W 1206 1%	62-55500	5 EACH MMBT5550 NPN SOT-23
30-71004B	1 EACH PCB MAIN K15	53-47045	1 EACH RES 47.00 OHM 1.00W 5% CARBON			"R38, R39, R56, R88, R89, R32, R33,"		"Q1, Q7, Q8, Q13, Q19"
41-27322	3 EACH CAP POLY FILM .027uF 250V AC 10		R42			"R15, R21, R68, R83, R149,"	70-05710	1 EACH RELAY SPDT 12A@120VAC/24V COIL
	"C113, C114, C115"	55-04705	2 EACH RES .47 OHM 5W 10% SB VERT			"R103, R107, R129, R117, R118, R124"		K1
41-47322-	1 1 EACH CAP MYLAR .0470UF 250VAC BOX		"R113, R114"		58-56035	5 EACH 5.6K SMT .25W 1206 1%	70-21050	1 EACH FUSE ABC 5.00A FAST 6.3X32MM
	C41	58-00035	4 EACH 0.0 SMT JUMPER 1206			"R14, R16, R30, R31"		F1
41-47422	1 EACH CAP MYLAR .47uF 250VAC BOX		"B3, R51, R58, R59"			R1	71-09252D	"4 EACH POT 9 "D-P" 25F B50K-C BLUE"
	C122	58-10015	3 EACH 10.5 SMT .25W 1206 1%		58-68025	1 EACH 680 SMT .25W 1206 1%		"P32, P42, P43, P44"
42-12142	1 EACH CAP ELECT 120MFD 400VOLT 20%		"R127, R128, R41"			R49	71-09253B	"3 EACH POT 9 "D-P" 25F B50K WHITE"
	C27	58-10025	4 EACH 100.5 SMT .25W 1206 1%		58-68035	2 EACH 6.8K SMT .25W 1206 1%		"P31, P41, P1"
45-18152	1 EACH CAP CER M 180PF 500VOLT 5%		"R47, R92, R112, R164"			"R25, R53"	71-10320	5 EACH FADER 20MM SL20V3-B10 K-L15D(G)

	C90	58-100 35	10 EACH 1K SMT .25W 1206 1%	58-680 45	1 EACH 68K SMT . 25W 1206 1%		"P51, P52, P53, P 54, P55"
45-33 11 3	1 EACH CAP CER M 330PF 1000VOL T 10%		"R25, R111,"		R132	72-125 52	"2 EACH POT 12 " "D-P"" 25F 1B50K x2-C BLK"
	C40		"R84, R150, R63, R64,"	58-910 25	2 EACH 910.5 SMT .25W 1206 1%		"P12, P22"
47-10 22 5	"2 EACH CAP ELE C 1,000 MFD 25V 20%"		"R101, R102, R3, R133"		"R45, R46"	72-125 53	"4 EACH POT 12 " "D-P"" 25F 1B50K x2 BLACK"
	"C38, C39"	58-100 45	33 EACH 10K SM T .25W 1206 1%	60-000 83	1 EACH TRANSIST OR 15A 100V NPN		"P11, P21, P2, P3"
47-22 15 1	1 EACH CAP ELEC 220 MFD 50VOLT 10%		"R2, R22, R24, R4 , R10,"		Q1		
	C31		"R17, R35, R57, R 61, R65,"	60-000 84	1 EACH TRANSIST OR 15A 100V PNP		
47-47 15 1	4 EACH CAP ELEC 470 MFD 50 VOLT 20%		"R80, R81, R87, R 135, R136,"		Q12		
	"C42, C43, C44, C 45"		"R55, R60, R119, R90, R148, R82,"	60-200 60	1 EACH TRANSIENT VOLT SUPP 200V 600W		
49-10 05 0	1 EACH CAP SMT 1UF 50V ELECTRO LYTIC		"R153, R312, R10 8, R98,"		Z1		

Congratulations on your purchase of the K15 amplifier. Designed specifically for the keyboard performer's needs, the K15 features four input channels with independent levels, a balanced/stereo LINE OUT with independent level and a 5 band graphic EQ. Channel features include; stereo inputs on channels 1&2 with an additional RCA input on channel 1. Tone control with Mid Contour switch are featured on channel 3 for optional use with bass or guitar. Channel 4 features a 3-band EQ with both 1/4" line and XLR for instruments and microphones. All inputs are designed for simultaneous use without degrading the signal. The tilt-back bass ported enclosure and high frequency tweeter deliver fullrange sound. Combined with 100 watts of power, the K15 is an ideal amp and stage monitor. The direct LINE OUT allows you to connect to the main house mixer for use in larger venues.

RECEIVING INSPECTION—read before getting started INSPECT YOUR AMP FOR ANY DAMAGE which may have occurred during shipping. If any damage is found, please notify the shipping company and CARVIN

immediately. SAVE THE CARTON & ALL PACKING MATERIALS. In the event you have to re-ship your unit, always use the original carton and packing material. This will provide the best possible protection during shipment. CARVIN and the shipping company are not liable for any damage caused by improper packing. SAVE YOUR INVOICE. It will be required for warranty service if needed in the future. SHIPMENT SHORTAGE. If you find items missing, they may have been shipped separately. Please allow several days for the rest of your order to arrive before inquiring. RECORD THE SERIAL NUMBER on the enclosed warranty card and below and this manual for your records. Keep your portion of the card and return the portion with your name and comments to us. Or you may register online at www.carvin.com/registration. USA customers register online at: www.carvin.com/registration. All other countries register online at: www.carvinworld.com/registration.

- For your records, you may wish to record the following information.
- Serial No. _____ Invoice Date _____

CONNECTING AC POWER TO YOUR K15

- Use only a grounded (3 prong) power outlet to prevent a shock hazard.

CONNECTING INPUTS TO YOUR K15

- Channels one and two are line inputs. A keyboard or any unbalanced device such as a drum machine can be plugged in using 1/4" phone plug shielded cables.
- Channel one features stereo RCA inputs for connecting devices such as disc players,
- MP3 players, or tape decks. Both inputs can be used at the same time.
- Channel three is a line/instrument input. A keyboard or any instrument such as a guitar or bass can be plugged in using a 1/4" phone plug shielded cable.
- Channel four is a microphone & line input. Plug a microphone into the balanced XLR
- MIC input using an XLR shielded cable. Plug a 1/4" shielded cable from a keyboard into the LINE input. Both inputs can be used at the same time.

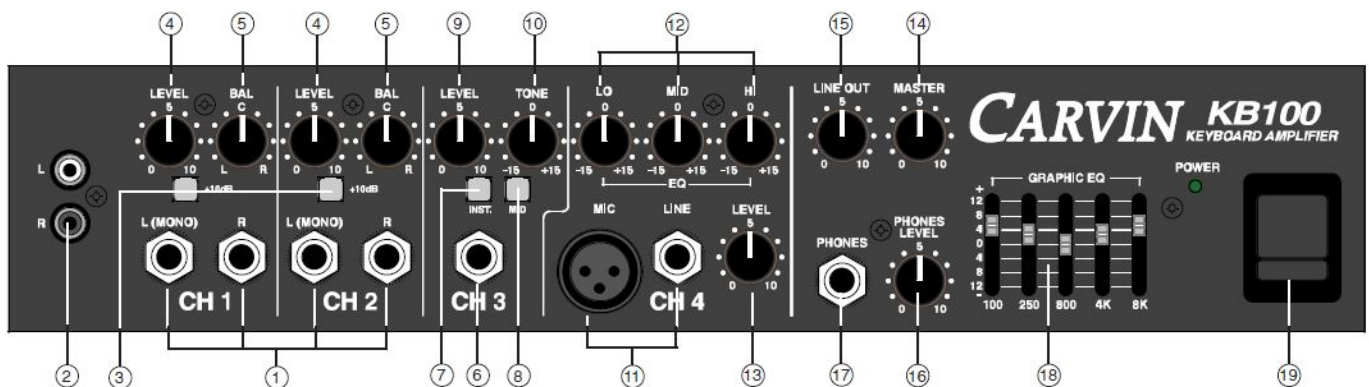
TURNING ON YOUR K15

- Plug in your instruments and microphone into the appropriate channels.
- Adjust all four channel volume controls to their off position (full counter-clockwise).
- Adjust all "BAL" and "EQ" tone controls to their center detent position.
- Turn the K15 on by the power switch on the front panel and watch for the power LED to come on.
- Adjust the volume controls to the desired playing level. (For detail on the individual channel tone controls and the graphic equalizer, see the appropriate sections in this manual.)

K15 KEYBOARD AMP SPECIFICATIONS

- **Frequency Response:** Inputs to Line Out: 20Hz-20kHz \pm 1dB
- **Output Power:** 100 Watts @ 8ohms
- **THD:** Less than 1%
- **Channel 1:** Stereo/Mono 1/4"inputs, RCA Stereo inputs, LEVEL control, BALANCE control, +12dB gain switch
- **Channel 2:** Stereo/Mono 1/4"inputs, LEVEL control, BALANCE control, +12dB gain switch
- **Channel 3:** Mono 1/4" input, TONE control, LEVEL control, Instrument level switch, MID cut switch

- **Channel 4:** Mono 1/4" input, XLR MIC input, 3-band EQ controls, LEVEL control
- **Graphic EQ.:** 5 Band: 100Hz, 250Hz, 800Hz, 4kHz, and 8kHz ± 12 dB
- **Headphones:** Stereo 1/4" jack, high current output, LEVEL control
- **Rear 1/4" Jacks:** LINE OUTs: 1 Balanced Mono (Unbalanced Right) output, 1 Unbalanced Left output, Independent LINE OUT level control (front) EFFECTS SEND / MAIN OUT EFFECT RETURN / AMP IN MAIN and AUX SPEAKER OUTPUTS, series wired (8ohms min.)
- **SPEAKER SPECS:** 15" PS15 woofer High frequency tweeter with adjustable L-Pad on crossover.
- **Enclosure response:** 57Hz to 16.5kHz
- **Power Consumption:** 150VA @ 120/240VAC
- **Power Requirement:** 100 to 240 VAC, 50-60Hz
- **Size:** 19.3Wx14.9Dx24H, 46Lbs.



K15 FRONT PANEL FEATURES

CHANNEL 1&2 FEATURE

1. L (MONO) & R INPUT JACKS

These 1/4" INPUT jacks are designed for keyboards but will work with most any inputs. Plug the stereo outputs from your keyboard into these jacks. Plugging into the L(MONO) jack only will send that input to both Left and Right at the LINE OUT and PHONES jacks.

2. CH 1 RCA INPUT JACKS

The Left and Right RCA inputs on Channel 1 are for connecting disc players, MP3 players, tape decks, as well as keyboards with RCA connectors.

3. +12DB GAIN SWITCHES

For inputs with low level signals on CH1 and CH2, press "IN" the +12dB switches to raise the level.

4. LEVEL CONTROL

The LEVEL controls adjust the volume of each channel heard through the speaker at the LINE OUT jacks and the PHONES jack.

5. BAL CONTROL (BALANCE)

The BALANCE control adjusts the difference in level between the L and R inputs of the channel. You can double the number of inputs on these channels by plugging in two different MONO sources to the L and R inputs and adjusting the BALANCE control to bring them to equal levels.

CHANNEL 3 FEATURES

- **CH 3 INPUT JACK**

The CH 3 input jack is a high-impedance input designed for keyboard, line level, an unbalanced mic and instruments such as a guitar or bass.

- **INST (INSTRUMENT LEVEL) SWITCH**

The INST switch increases the level.

- **MID SWITCH**

The MID switch provides additional tone shaping for instruments by cutting mid frequencies in the 500Hz range.

- **LEVEL CONTROL**

The LEVEL control adjusts the volume of Channel 3 heard in the speaker, at the LINE OUT jacks and the PHONES jack.

- **TONE CONTROL**

The TONE control is used to shape the bass or treble sound of the input signal. Start with the tone control center position where it does not affect the signal. Then as needed, turn to the Right to boost HIGH frequencies or to the Left to boost LOW frequencies.

CHANNEL 4 FEATURES

- **XLR MICROPHONE & 1/4" INPUT JACKS**

The MIC input is designed for balanced low impedance (microphone) input signals. The Balanced input will reduce the common noise picked up on the microphone cables. The XLR connector is wired as per the industry standard; pin 1 is ground, pin 2 is positive and pin 3 is negative. The 1/4" jack is designed for keyboard and line level signals. Both of these inputs can be used at the same time.

- **LO, MID, AND HI TONE CONTROLS**

The LO, MID and HI tone controls are used to shape the bass, midrange, and treble sound of the input signal. It is suggested that the tone control settings start in their center positions where they do not effect the signal.

Then, as needed, turn the turn to the right to boost, or turn to the left to cut. To add crispness to your sound, set the Lo to +10, Mid to -10, Hi to +10.

- **LEVEL CONTROL**

The LEVEL control adjusts the volume of the channel heard in the speaker, at the LINE OUT jacks and the PHONES jack.

MASTER SECTION FEATURES

- **MASTER VOLUME**

The overall speaker volume is controlled by the MASTER control. Turn up the volume here before increasing the individual channel LEVEL controls. The MASTER control does not affect the LINE OUT or PHONES levels.

- **LINE OUT CONTROL**

The LINE OUT control adjusts the output level of the rear LINE OUT jacks.

- **PHONES LEVEL CONTROL**

The PHONES LEVEL control adjusts the volume heard at the PHONES jack.

- **PHONES JACK**

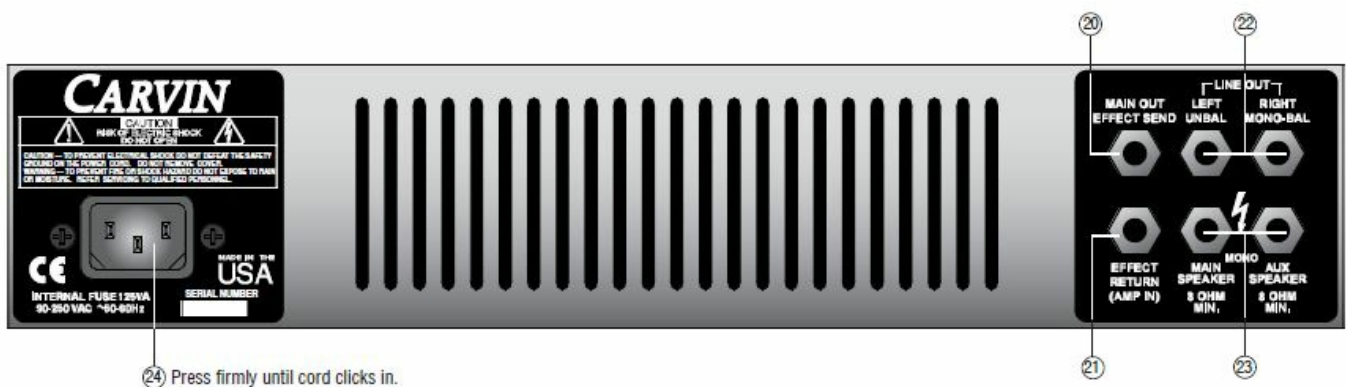
The stereo PHONES jack is driven by high current headphone amps that will drive any pair of headphones.

- **THE 5 BAND GRAPHIC EQUALIZER**

The 5 band graphic EQ is an excellent tool to fine tune the overall mix from your K15. To use the 5 band Graphic, set all sliders to their center detent position. When the sliders are in this position, they do not effect the audio signal. When a slider is raised or lowered, it boosts and cuts the listed frequency. One setting that can be used to enhance your sound is to cut the mid range (set 800 Hz slider to -8) and raise the high and low frequencies as shown. This is a common “smile” curve that gives a tight punchy sound with plenty of highs to cut through a crowd. This EQ does not affect the LINE OUT or PHONES jacks.

• POWER SWITCH

The power switch is to be utilized as the master ON/OFF switch. If the power LED does not turn on, check the power cable and make sure it is properly connected at the back of the amp. Also verify there is power at the wall receptacle. If the amp does not power up after this is verified, contact customer service.



REAR PANEL FEATURES

• MAIN OUT (EFFECTS SEND) JACK

The MAIN OUT jack is a post EQ output jack for pre amplifier signal access. This output is the same signal that is being fed to the internal power amplifier. Use this jack as your EFFECT SEND when using external effects. It will also drive an external amp should you require more power.

• EFFECTS RETURN (AMP IN) JACK

The EFFECTS RETURN jack is the input return jack that completes the effects loop. This jack will interrupt the signal path when plugged into. Plug the output of your external effects unit into this jack.

• LINE OUT JACKS

The front LINE OUT control sets the output level of these jacks. They are fully independent from the MASTER control. The RIGHT / MONO-BAL jack is a MONO, balanced TRS (Tip-Ring-Sleeve) output when used by itself. When a plug is inserted into the LEFT/UNBAL jack, the RIGHT jack becomes a standard unbalanced output and you have a pair of stereo outputs. The LINE OUT jacks are generally used to connect your amp to the main mixer.

• EXTERNAL SPEAKER JACK (CHASSIS)

The EXTERNAL SPEAKER jack is for connecting additional speaker cabinets. The jack is configured so an external speaker cabinet can be connected in series with the K15's internal speaker. Recommended external speaker impedances are 4 to 8 ohms. Carvin recommends the 112AG extension speaker.

• AC POWER

The detachable AC POWER CORD supplied is designed to operate with one type of voltage (the European 230V export model uses a CEE-7 plug cord set). Make sure the cord is securely inserted into the back of the unit. Plug the cord into a grounded “3” prong” power source. No attempt should ever be made to defeat or use

the amp without the ground connected. The internal switching power supply will “auto-switch” from 100 VAC to 250 VAC, 50 to 60 Hz. This allows the K15 to be used in various countries without the need for modifications or external transformers.

- **1/4" SPEAKER INPUT**

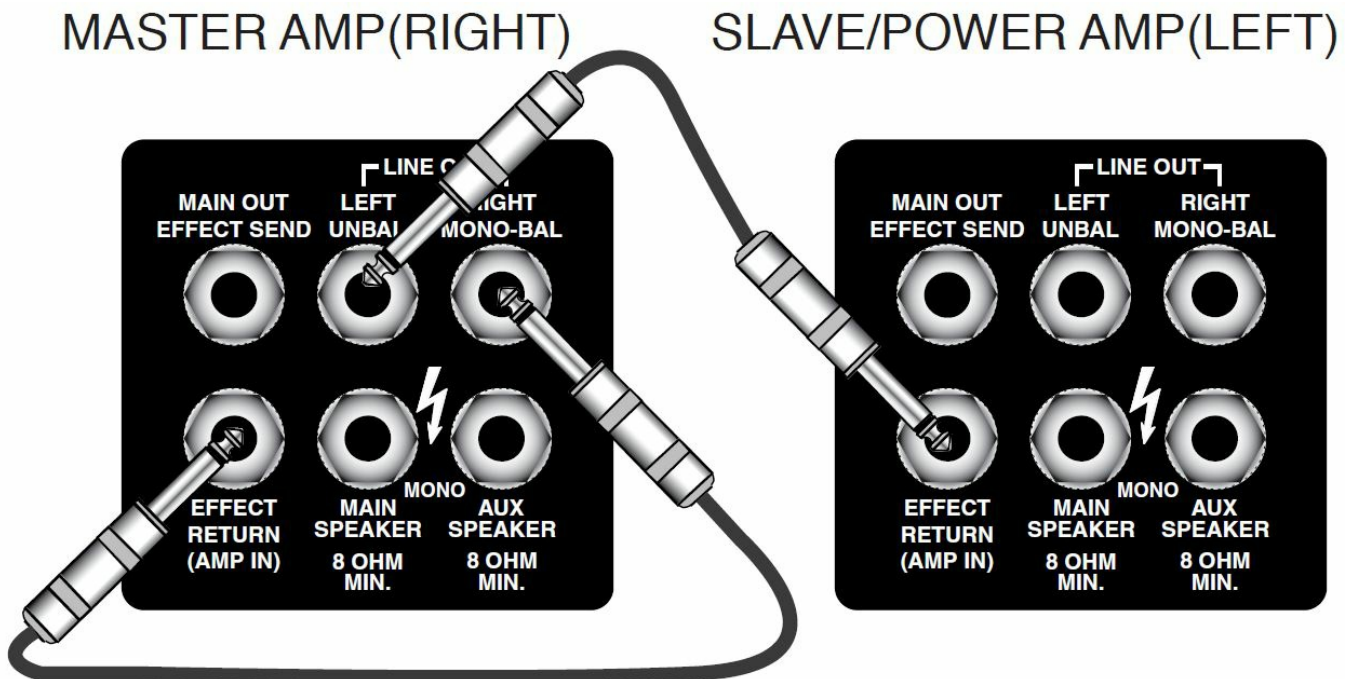
A 1/4" jack is used for connecting the amp to the speaker cabinet.

- **TWEETER L-PAD**

The rear TWEETER L-Pad adjusts the level of the tweeter to give crisp clear highs. If distortion is heard when playing excessively loud, turn the tweeter down as it can amplify distortion.




**STEREO SETUP USING TWO K15'S
OR ONE ADDITIONAL POWER AMP & SPEAKER**



- The K15 is capable of stereo operation if another amp is available.
- Connect the RIGHT LINE OUT jack to the AMP IN (EFFECT RETURN) of the amp you have your instruments connected to. Use the LEFT LINE OUT jack to connect to the INPUT of a separate power amp, or to the AMP IN (EFFECT RETURN) of another K15 unit. (NOTE: GRAPHIC EQ will not function)

Documents / Resources

	<p>CARVIN K15 Keyboard Amp [pdf] Instruction Manual K15 Keyboard Amp, K15, Keyboard Amp</p>
---	---

References

- [MH Search - Manual-Hub.com](#)
- [Carvin Audio Great Sounding Gear For Musicians and Sound Professionals](#)
- [MH Search - Manual-Hub.com](#)