



Carrier Smart Kit Module User Manual

[Home](#) » [Carrier](#) » Carrier Smart Kit Module User Manual 



Smart Kit Module
User Manual

Contents

- 1 Smart Kit Module
- 2 SPECIFICATION
- 3 PRECAUTIONS
- 4 DOWNLOAD AND INSTALL APP
- 5 INSTALL THE SMART KIT(wireless module)
- 6 USER REGISTRATION
- 7 NETWORK CONFIGURATION
- 8 HOW TO USE THE APP
- 9 SPECIAL FUNCTIONS
- 10 Documents / Resources
- 11 Related Posts

Smart Kit Module



Android

<https://play.google.com/store/apps/details?id=com.midea.carrier>



iOS

<http://itunes.apple.com/tw/app/carrier-air-conditioner/id10132?mt=8>

IMPORTANT NOTE: Read the manual carefully before installing or connecting your Smart kit(Wireless module). Make sure to save this manual for future reference.

DECLARATION OF CONFORMITY

Hereby, we declare that this Smart kit is in compliance with the essential requirements and other relevant provisions of Directive 2014/53/EU.

A copy of the full doc is attached. (European Union products only)

SPECIFICATION

Model: EU-OSK105,US-OSK105

Standard: IEEE 802. 11b/g/n

Antenna Type: Printed PCB Antenna

Frequency Band: 2400-2483.5MHz

Operation Temperature:0 C~45 C/32 F~113 F

Operation Humidity: 10%~85%

Power Input: DC 5V/300mA

Maximum TX Power: <20dBm

PRECAUTIONS

- Applicable system: iOS, Android.

Please keep your APP up to date with the latest version.

Due to the special situations that may occur, we explicitly claim below: Not all the Android and IOS systems are compatible with APP. We will not be responsible for any issue as a result of the incompatibility.

W wireless safety strategy Smart kit only supports WPA-PSK/WPA2-PSK encryption and no encryption.

WPA-PSK/WPA2-PSK encryption is recommended.

- **Cautions**

Due to different network situations, the control process may return time-out sometimes. If this situation occurs, the display between the board and App may not be the same, please do not feel confused.

Smart Phone camera needs to be 5 million pixels or above to make sure to scan the QR code well.

– Due to different network situations, sometimes, request time-out could happen, thus, it is necessary to do network configuration again. – The APP system is subject to update without prior notice for product function improvement. The actual network configuration process may be slightly different from the manual, the actual process shall prevail. – Please Check The Service Website For More information.

DOWNLOAD AND INSTALL APP

CAUTION: The following QR Code is only available for downloading the APP. It is totally different with the QR code packed with SMART KIT

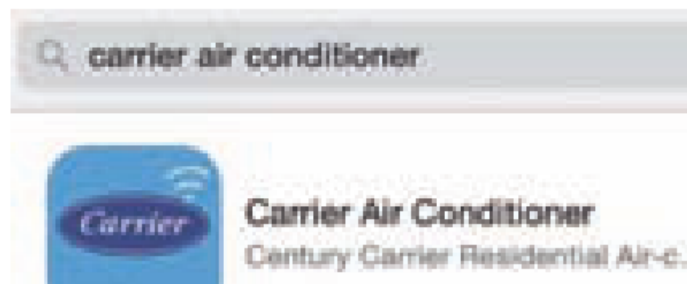
1. iOS system:

Scan QR Code or goes to App Store and search for 'The Carrier air conditioner app and download it.

2. Android system:

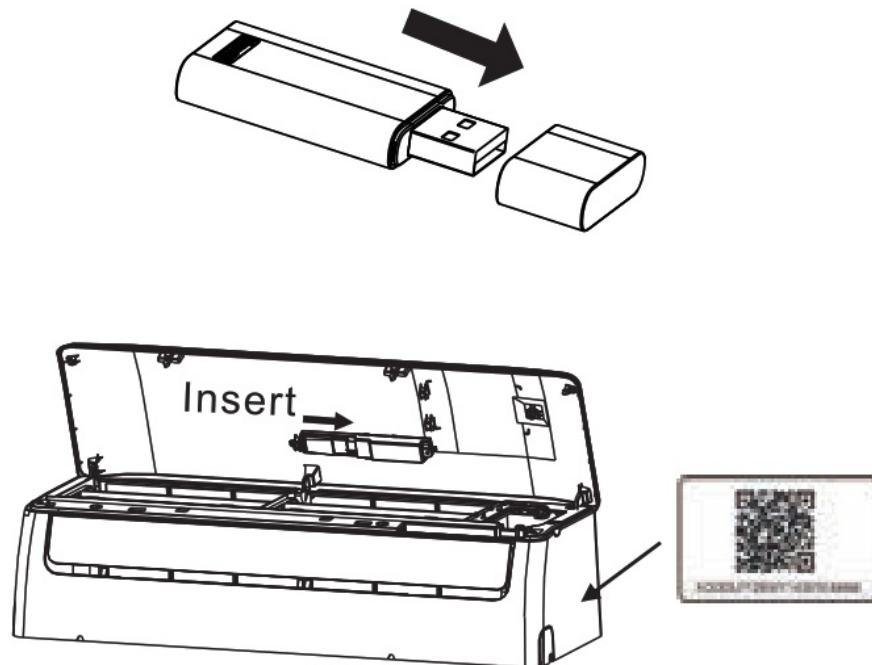
Scan QR Code or go to Google Play, search for 'The Carrier air conditioner app and download it.

 Android	 iOS
https://play.google.com/store/apps/details?id=com.midea.carrier	http://itunes.apple.com/tw/app/carrier-8



INSTALL THE SMART KIT(wireless module)

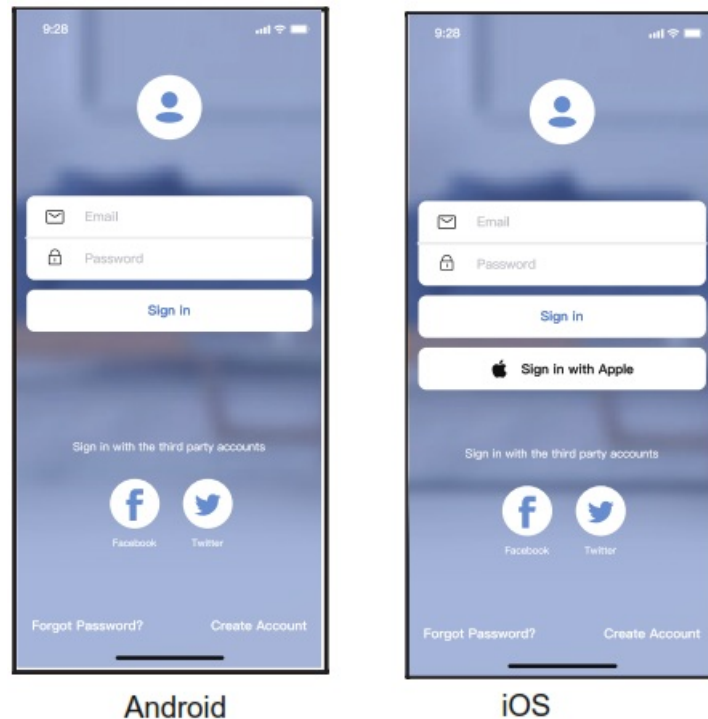
1. Remove the protective cap of the smart kit (wireless module)
2. Open the front panel and insert the smart kit (wireless module) into the reserved interface.
3. Attach the QR code packed with the Smart kit (wireless module) to the side panel of the machine, ensuring it is convenient to be scanned by the mobile phone. Alternatively, users can take pictures of the QR Code and save them on their own phones.



WARNING: This interface is only compatible with SMART KIT(wireless module) provided by the manufacturer.

USER REGISTRATION

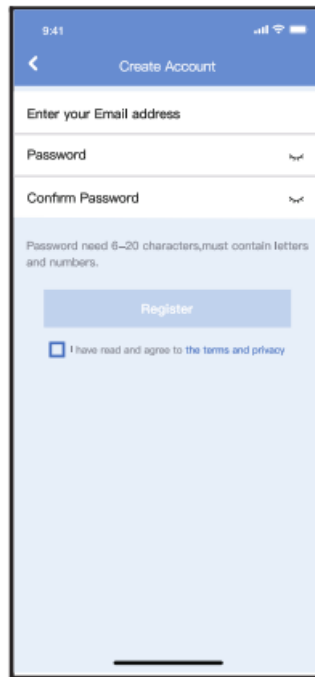
- Please ensure your mobile device is connected to a Wireless router. Also, the Wireless router has already connected to the Internet before doing user registration and network configuration.
- It is better to log in to your email box and activate your registration account by clicking the link in case you forget the password. You can log in with third-party accounts.



Android

iOS

1 Click "Create Account"



2 Enter your email address and password and then click " Register "

NETWORK CONFIGURATION

Cautions

- It is necessary to forget any other around the network and make sure the Android or IOS device just connects to the Wireless network you want to configure.
- Make sure the Android or IOS device Wireless function works well and can be connected back to your original Wireless network automatically.

Kindly reminder:

The user must finish all the steps in 8 minutes after powering on the air conditioner, otherwise, you need to power on it again.

Using an Android or iOS device to do network configuration

- Make sure your mobile device has already been connected to the Wi-Fi network which you want to use.
- Also, you need to forget other irrelevant Wi-Fi networks in case it influences your configuration process.
- Disconnect the power supply of AC.
- Connect the power supply of AC, and continuously press the "LED DISPLAY" or "DO NOT DISTURB" button seven times in 10 seconds.
- When the AC displays "AP", it means that the AC Wi-Fi has already entered into "AP" mode.

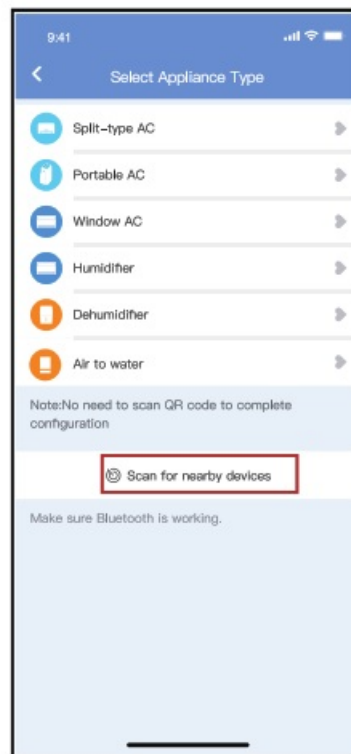
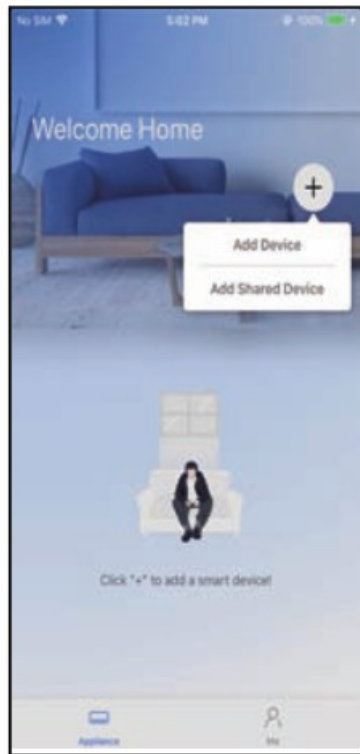
Note:

There are two ways to finish the network configuration:

- Network configuration by Bluetooth scan
- Network configuration by select appliance type

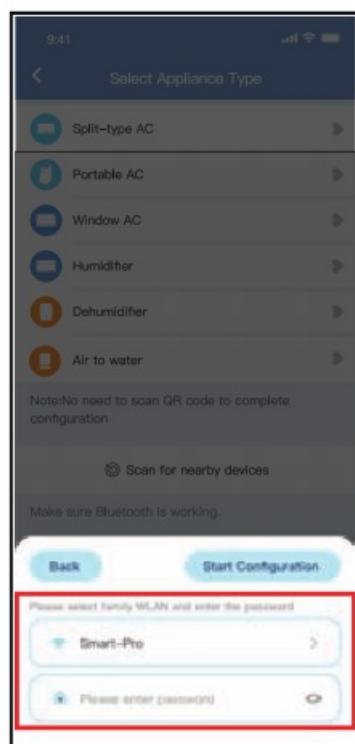
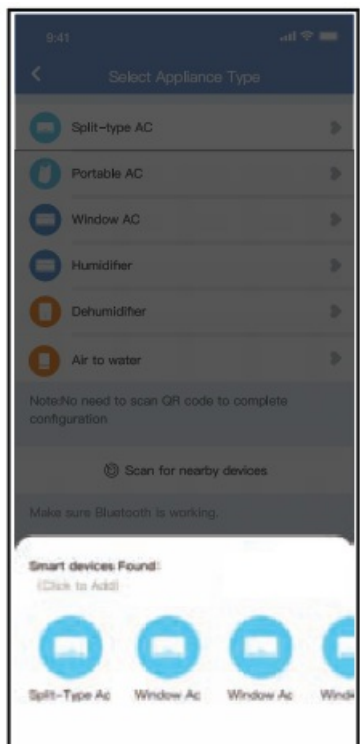
Network configuration by Bluetooth scan

Note: Make sure the Bluetooth of your mobile device is working.



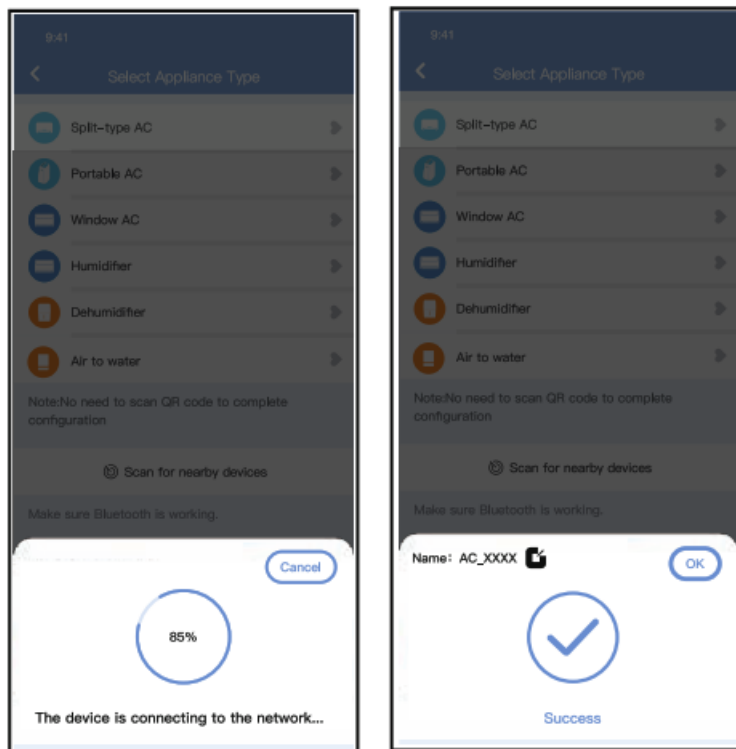
1 Press “ + Add Device ”

2 Press “Scan for nearby devices”



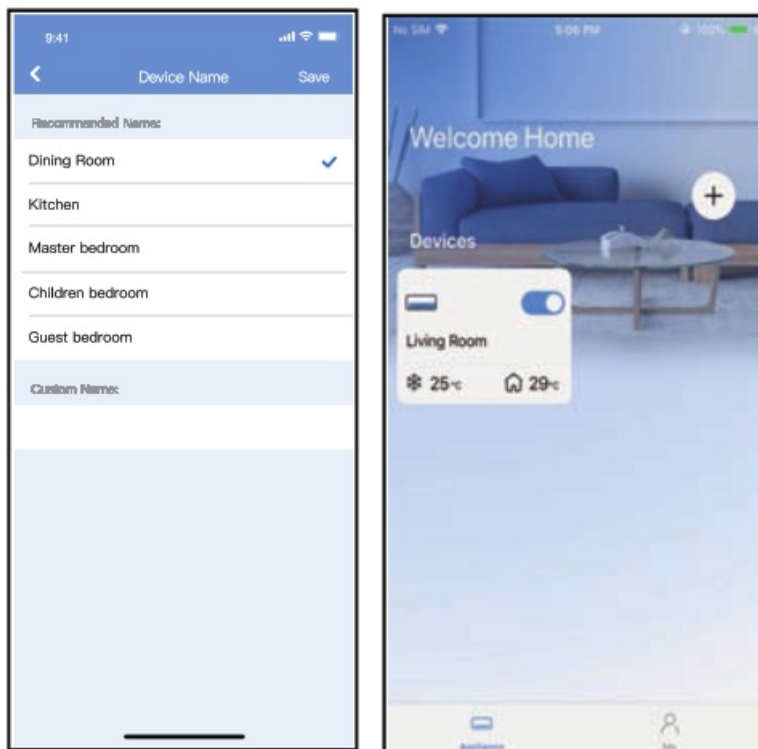
3. Wait for smart devices to find, then click to add it

4. Select home Wi-Fi, enter the password



5. Wait to connect to the network

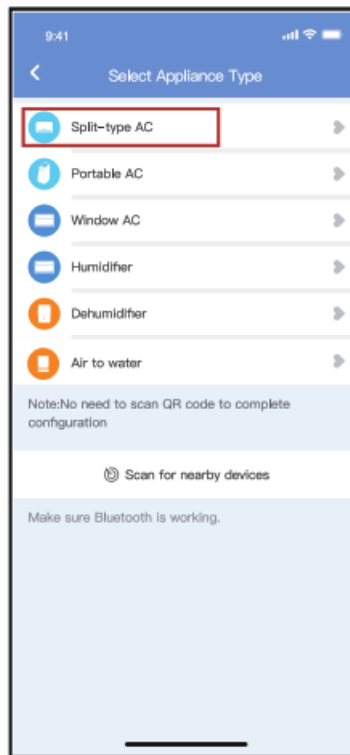
6. Configuration Success, you can modify the default name.



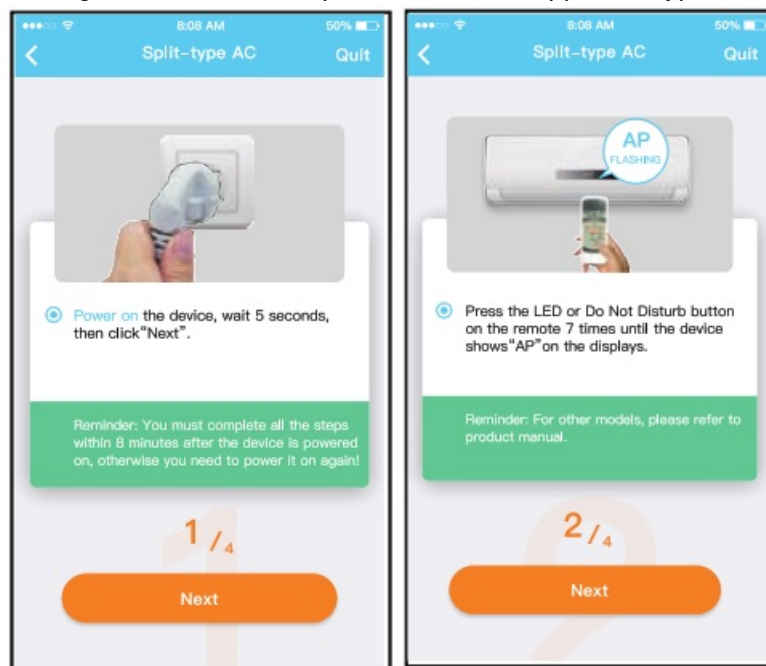
7. You can choose an existing name or customize a new name.

8. Bluetooth network configuration is successful, now you can see the device in the list.

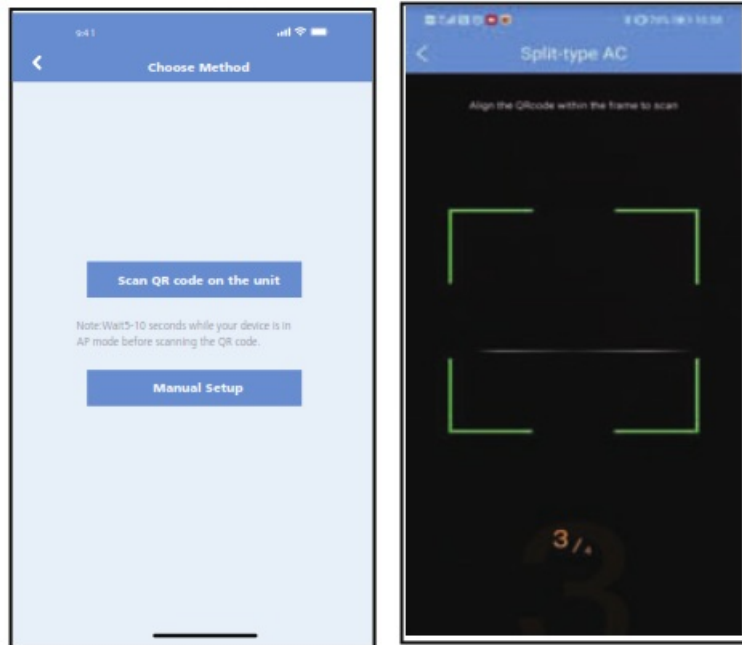
Network configuration by select appliance type :



1. If the Bluetooth network configuration is a failure, please select the appliance type.



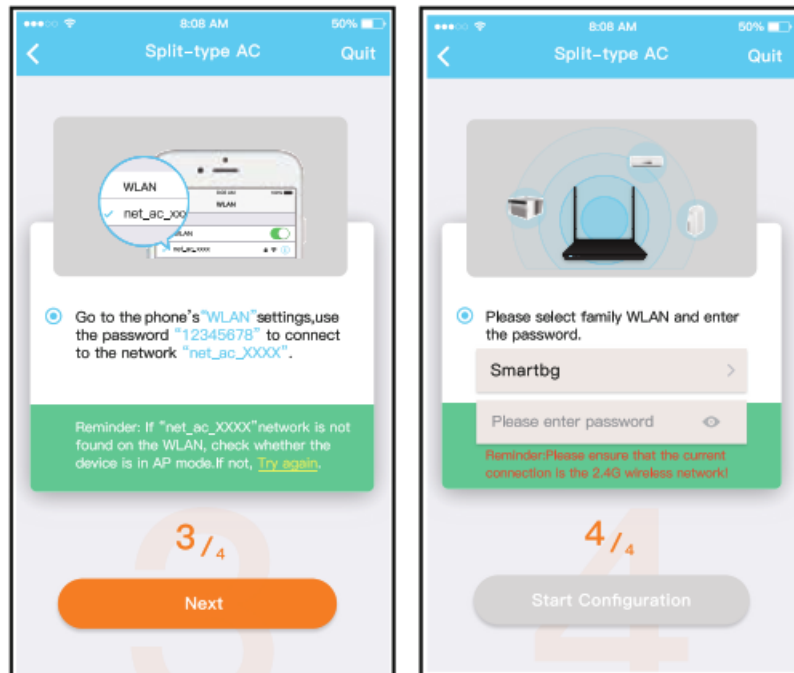
2. please follow the above steps to enter "AP" mode.



3. Choose the network configuration method.

4. Choose the “Scan the QR code” method.

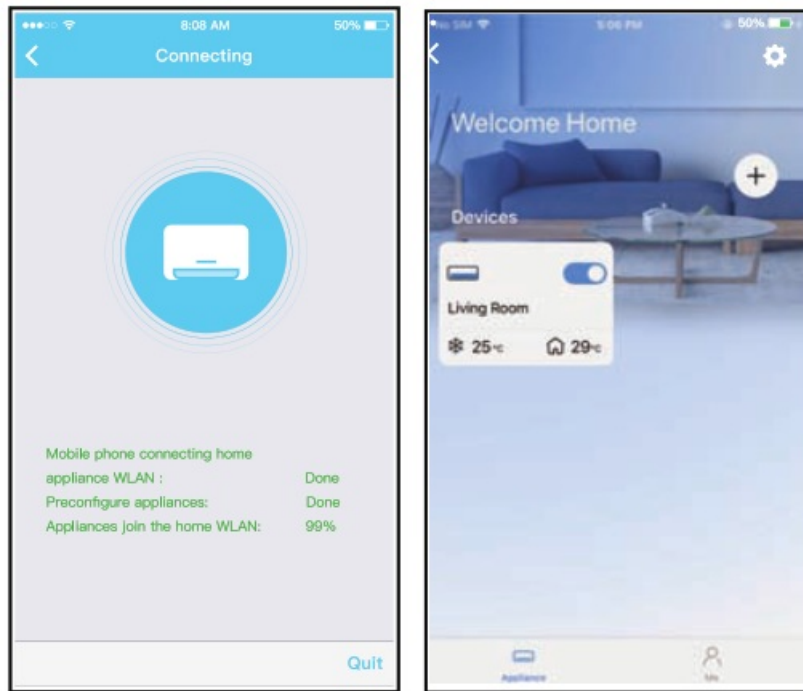
NOTE: Steps 3 and 4 are applicable to the Android system only. iOS system does not need these two steps.



5. When choosing the “Manual Setup” method(Android).

Connect to the wireless network(iOS)

6. Please enter your password



7. Network configuration is successful

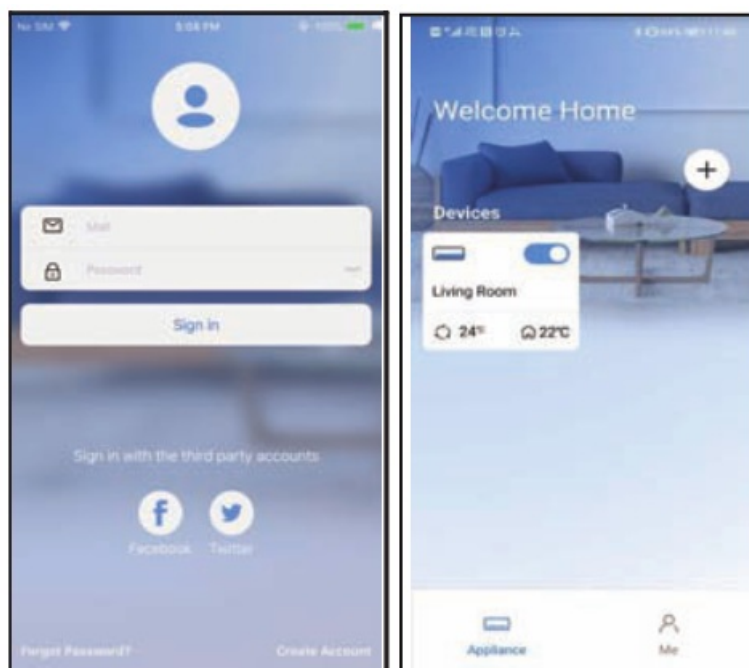
8. Configuration Success, you can see the device in the list.

NOTE:

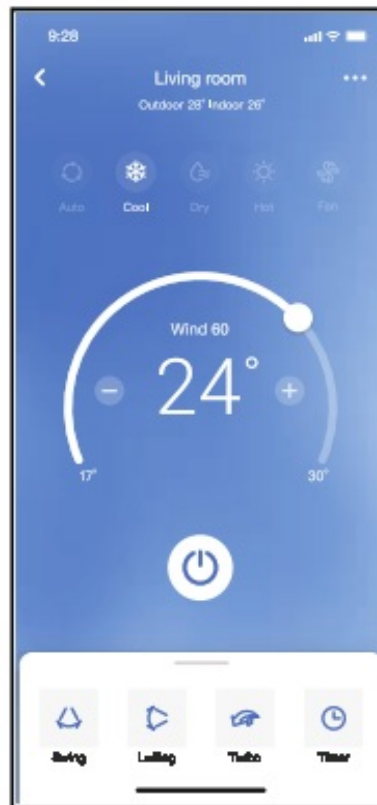
- When finishing network configuration, APP will display success cue words on the screen.
- Due to different internet environments, it is possible that the device status still displays “offline”. If this situation occurs, it is necessary to pull and refresh the device list on the APP and make sure the device status becomes “online”. Alternatively, the user can turn off the AC power and turn on it again, the device status will become “online” after a few minutes.

HOW TO USE THE APP

Please ensure both your mobile device and air conditioner are connected to the Internet before using the app to control the air conditioner via the internet, please follow the next steps:



1. Click ” Sign in ”
2. Choose the air conditioner.



3. Thus, the user can control air conditioners on/off status, operation mode, temperature, fan speed, and so on.

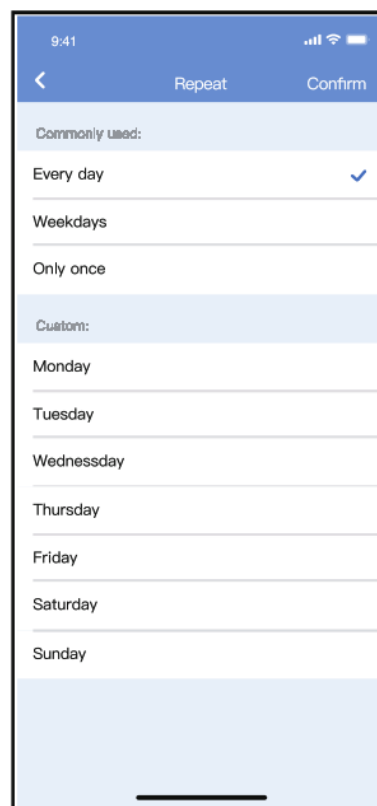
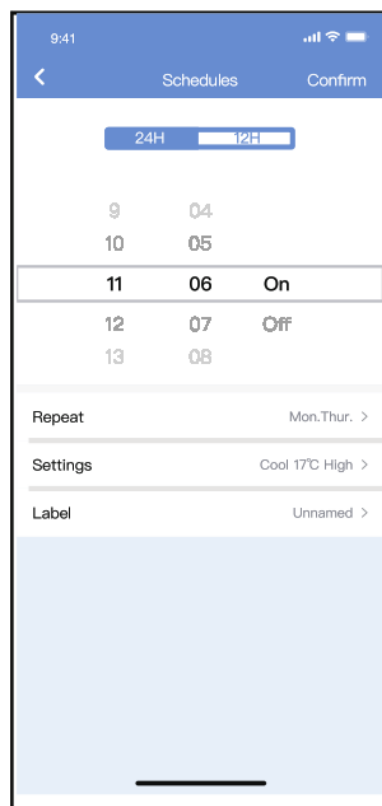
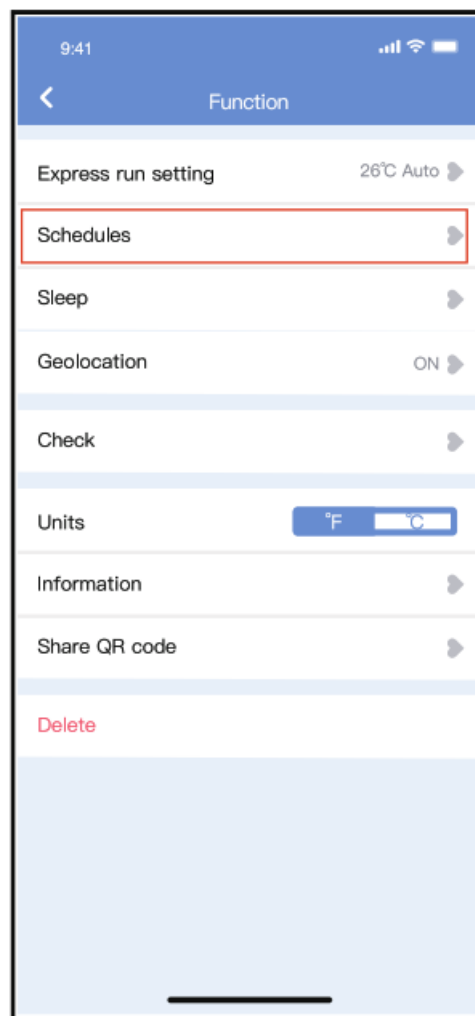
NOTE:

Not all the function of the APP is available on the air conditioner. For example ECO, Turbo, and Swing functions, please check the user manual to find more information.

SPECIAL FUNCTIONS

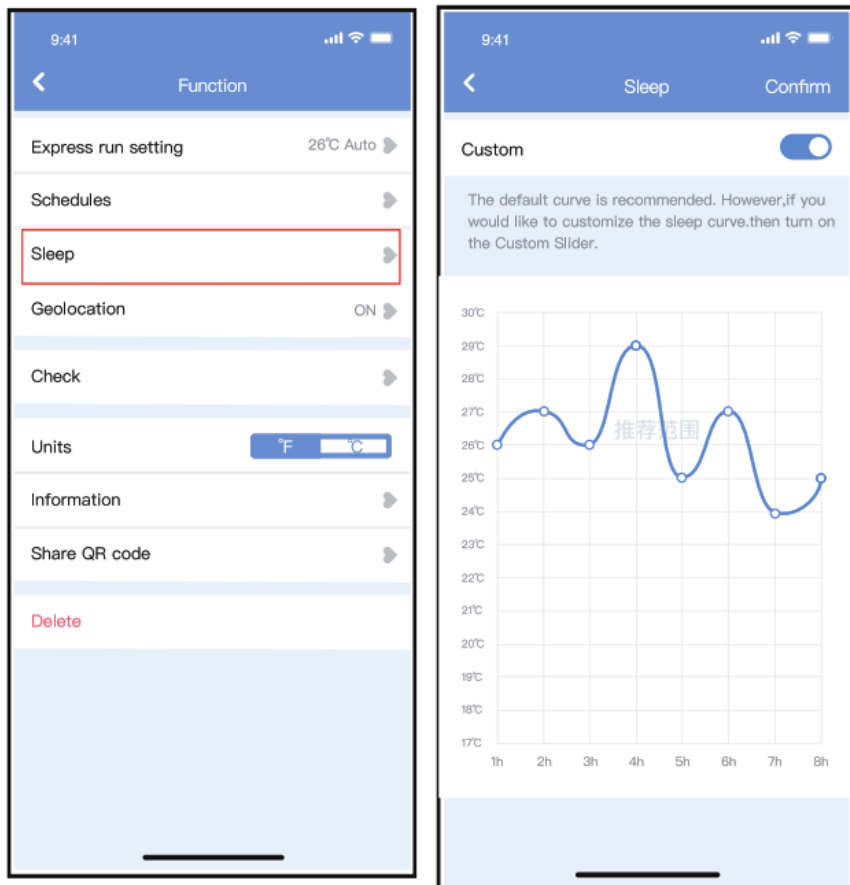
Schedule

Weekly, users can make an appointment to turn on or off AC at a specific time. Users also can choose circulation to keep the AC under schedule control every week.



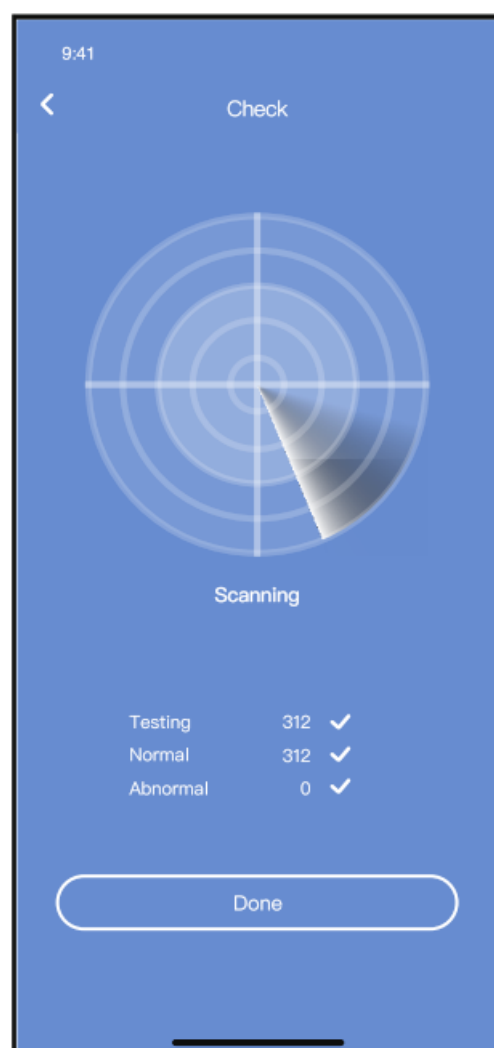
Sleep

User can customize their own comfortable sleep by setting a target temperature.



Check

Users can simply check the AC running status with this function. When finishing this procedure, it can display normal items, abnormal items, and detailed information.

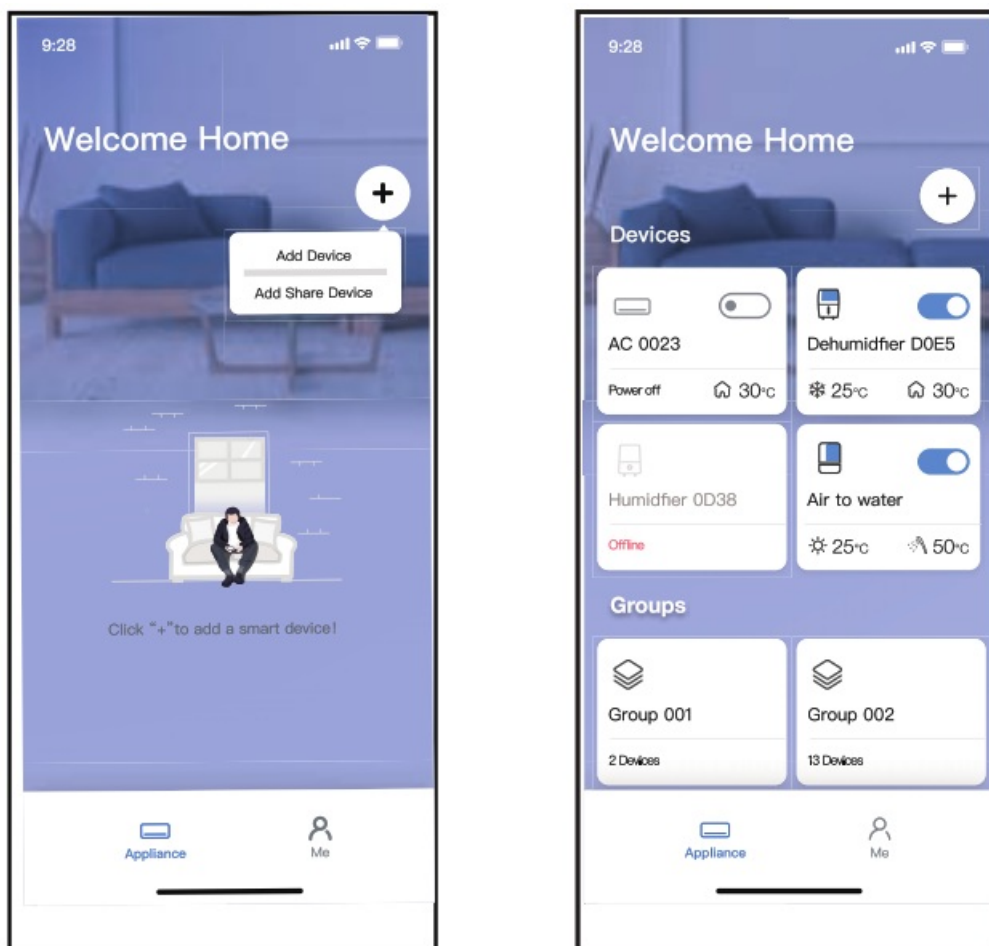


Share Device

The air conditioner can be controlled by multi-users at the same time by the Share Device function.



1. Click "Shared QR code"
2. QR code display.



3. The other users must log in “Carrier air conditioner” app first, then click “Add Share Device” on their own mobile, then ask them to scan the QR code.
4. Now the others can add the shared device.

CAUTIONS: For models of US-OSK105, EU-OSK105:

FCC ID:2AS2HMZNA21

IC:24951-MZNA21

This device complies with Part 15 of the FCC Rules and it contains license-exempt transmitter(s)/receiver(s) that comply with Innovation, Science and Economic Development Canada’s license-exempt RSS(s).

Operation is subject to the following two conditions:

1. This device may not cause interference; and
2. This device must accept any interference, including interference that may cause undesired operation of the device.

Only operate the device in accordance with the instructions supplied.

Changes or modifications to this unit not expressly approved by the party responsible for compliance could void the user’s authority to operate the equipment. This device complies with FCC radiation exposure limits set forth for an uncontrolled environment.

In order to avoid the possibility of exceeding the FCC radio frequency exposure limits, human proximity to the antenna shall not be less than 20cm (8 inches) during normal operation.

NOTE: This equipment has been tested and found to comply with the limits for a Class B digital device, pursuant to part 15 of the FCC Rules. These limits are designed to provide reasonable protection against harmful interference in a residential installation. This equipment generates uses, and can radiate radio frequency energy and, if not installed and used in accordance with the instructions, may cause harmful interference to radio communications. However, there is no guarantee that interference will not occur in a particular installation. If this equipment does cause harmful interference to radio or television reception, which can be determined by turning

the equipment off and on, the user is encouraged to try to correct the interference by one or more of the following measures:

- Reorient or relocate the receiving antenna.
- Increase the separation between the equipment and receiver.
- Connect the equipment into an outlet on a circuit different from that to which the receiver is connected.
- Consult the dealer or an experienced radio/TV technician for help.

NOTE

Carrier will not be liable for any issues and problems caused by Internet, WLAN Router, and Smart mobile. Please contact the original provider to get further help.

The APP may update the user interface without notice.

Manufacturer: Foshan Midea Carrier Air-conditioning Equipment Co. Ltd.

Address: Lingang Road No.22, Beijiao Town, Shunde, Foshan, Guangdong, P.R.C.


Postal Code 528311

In the Greek market, the USB stick is available through the Totaline Store.

Contact details:

18, Kifissou Ave.
104 42 Athens, Greece
Tel.: +30 210 6796470
Fax: +30 210 6796396
e-mail: csee.totaline@ahi-carrier.eu

Documents / Resources

 <p>SMART KIT USER MANUAL</p> <p>Carrier</p> <p>Android</p> <p>iOS</p> <p>IMPORTANT NOTE: Read the manual carefully before installing or connecting your Smart Kit (Wireless module). Make sure to save this manual for future reference.</p>	<p>Carrier Smart Kit Module [pdf] User Manual</p> <p>Smart Kit, Smart Kit Module, Module</p>
--	--