



## Carrier RG10L3 Remote Controller Owner's Manual

[Home](#) » [Carrier](#) » Carrier RG10L3 Remote Controller Owner's Manual 

### Contents

- 1 Carrier RG10L3 Remote Controller
- 2 Remote Controller Specifications
  - 2.1 SPECIAL NOTE
- 3 Handling the Remote Controller
  - 3.1 Inserting and Replacing Batteries
  - 3.2 BATTERY NOTES
  - 3.3 BATTERY DISPOSAL
- 4 Buttons and Functions
  - 4.1 Remote Screen Indicators
- 5 How to Use Basic Functions
  - 5.1 Basic operation
- 6 Setting the TIMER
  - 6.1 TIMER ON setting
  - 6.2 TIMER OFF setting
- 7 How to Use Advanced Functions
  - 7.1 Swing function
  - 7.2 LED DISPLAY
  - 7.3 Lifting panel function
  - 7.4 FP function
  - 7.5 BOOST Function
  - 7.6 SET function
- 8 Documents / Resources
  - 8.1 References
- 9 Related Posts



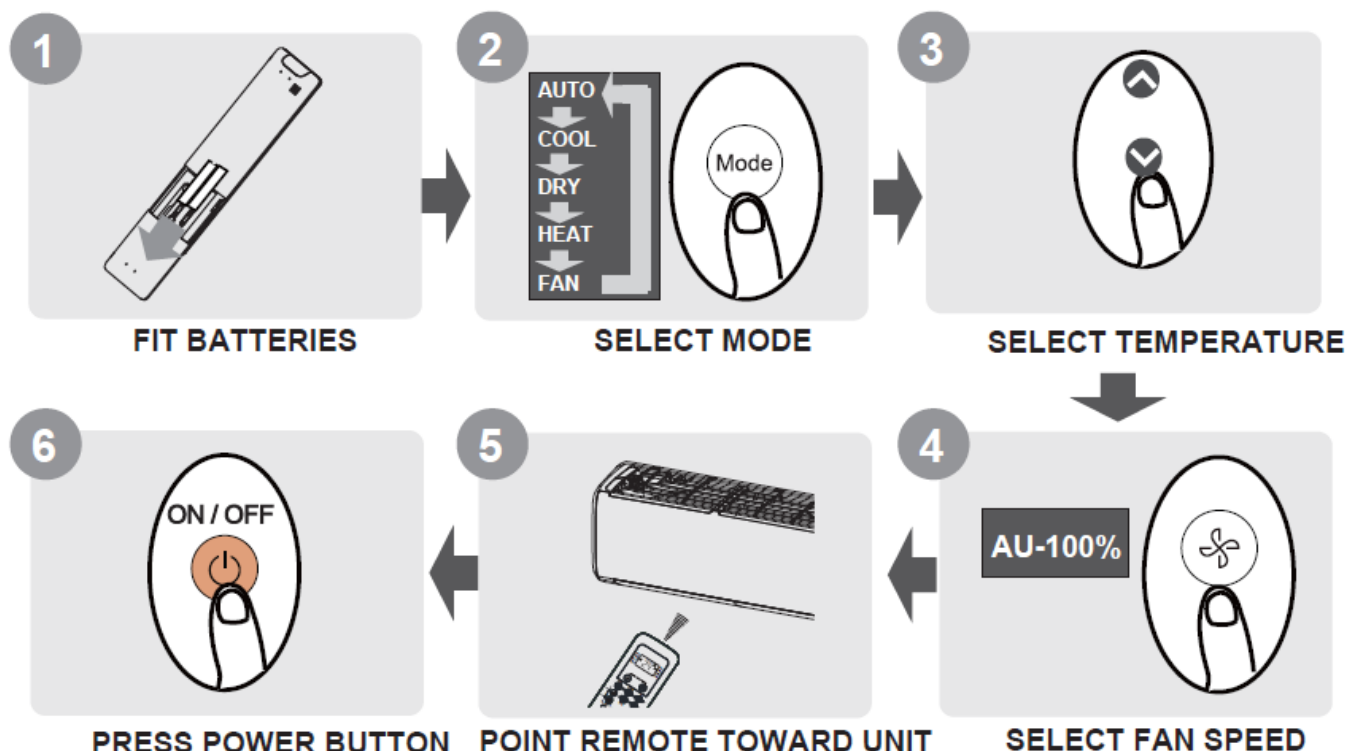
Carrier RG10L3 Remote Controller



Remote Controller Specifications

Model	RG10L3(2HS)/BGEFU1, RG10L3(2HS)/BGEF
Rated Voltage	3.0V( Dry batteries R03/LR03×2)
Signal Receiving Range	maximun 8m (vertical distance )
Environment	-5°C~60°C(23°F~140°F)

Quick Start Guide



### NOT SURE WHAT A FUNCTION DOES?

Refer to the How to Use Basic Functions and How to Use Advanced Functions sections of this manual for a detailed description of how to use your air conditioner.

### SPECIAL NOTE

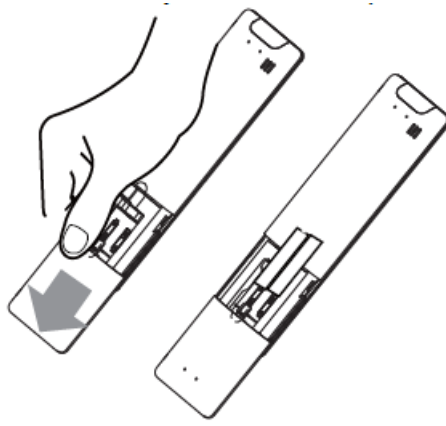
- Button designs on your unit may differ slightly from the example shown.
- If the indoor unit does not have a particular function, pressing that function's button on the remote control will have no effect.
- When there are wide differences between "Remote controller Manual" and "USER'S MANUAL" on function description, the description of "USER'S MANUAL" shall prevail.

## Handling the Remote Controller

### Inserting and Replacing Batteries

Your air conditioning unit may come with two batteries(some units). Put the batteries in the remote control before use.

1. Slide the back cover from the remote control downward, exposing the battery compartment.
2. Insert the batteries, paying attention to match up the (+) and (-) ends of the batteries with the symbols inside the battery compartment.
3. Slide the battery cover back into place.



## **BATTERY NOTES**

For optimum product performance:

- Do not mix old and new batteries, or batteries of different types.
- Do not leave batteries in the remote control if you don't plan on using the device for more than 2 months.

## **BATTERY DISPOSAL**

Do not dispose of batteries as unsorted municipal waste. Refer to local laws for proper disposal of batteries.

## **TIPS FOR USING REMOTE CONTROL**

- The remote control must be used within 8 meters of the unit.
- The unit will beep when remote signal is received.
- Curtains, other materials and direct sunlight can interfere with the infrared signal receiver.
- Remove batteries if the remote will not be used more than 2 months.

## **NOTES FOR USING REMOTE CONTROL**

The device could comply with the local national regulations.

- In Canada, it should comply with CAN ICES-3(B)/NMB-3(B).
- In USA, this device complies with part 15 of the FCC Rules.

Operation is subject to the following two conditions:

1. This device may not cause harmful interference, and
2. This device must accept any interference received, including interference that may cause undesired operation.

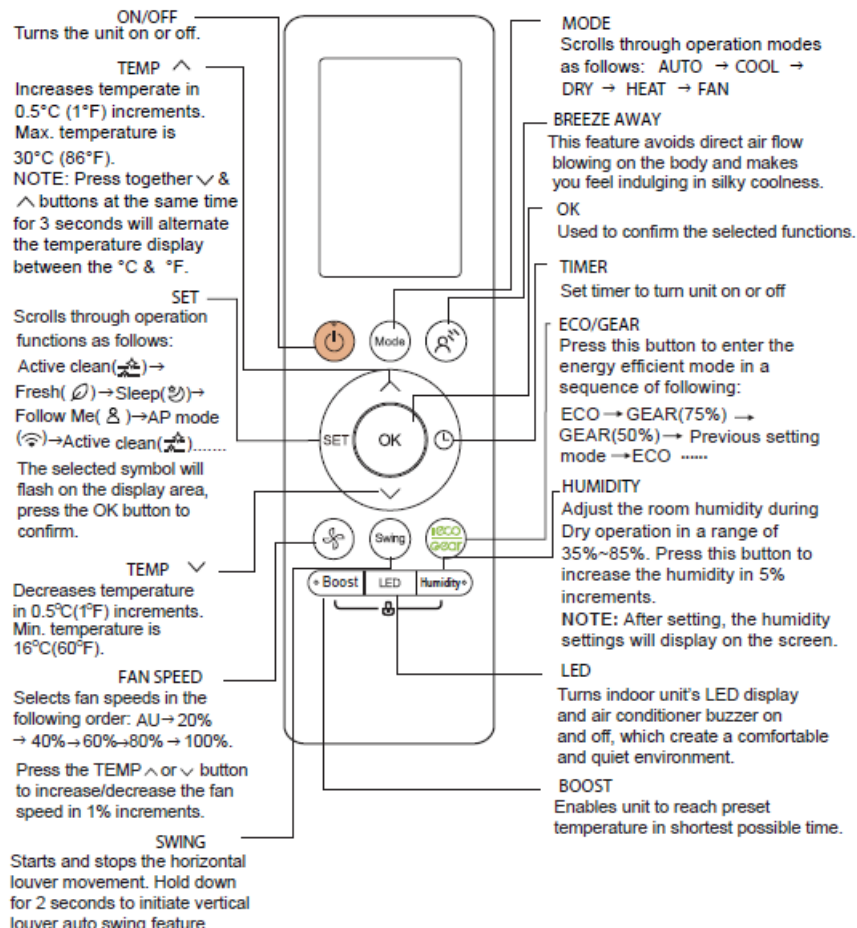
This equipment has been tested and found to comply with the limits for a Class B digital device, pursuant to part 15 of the FCC Rules. These limits are designed to provide reasonable protection against harmful interference in a residential installation. This equipment generates, uses and can radiate radio frequency energy and, if not installed and used in accordance with the instructions, may cause harmful interference to radio communications. However, there is no guarantee that interference will not occur in a particular installation. If this equipment does cause harmful interference to radio or television reception, which can be determined by turning the equipment off and on, the user is encouraged to try to correct the interference by one or more of the following measures:

- Reorient or relocate the receiving antenna. Increase the separation between the equipment and receiver.

- Connect the equipment into an outlet on a circuit different from that to which the receiver is connected.
- Consult the dealer or an experienced radio/TV technician for help.
- Changes or modifications not approved by the party responsible for compliance could void user's authority to operate the equipment.

## Buttons and Functions

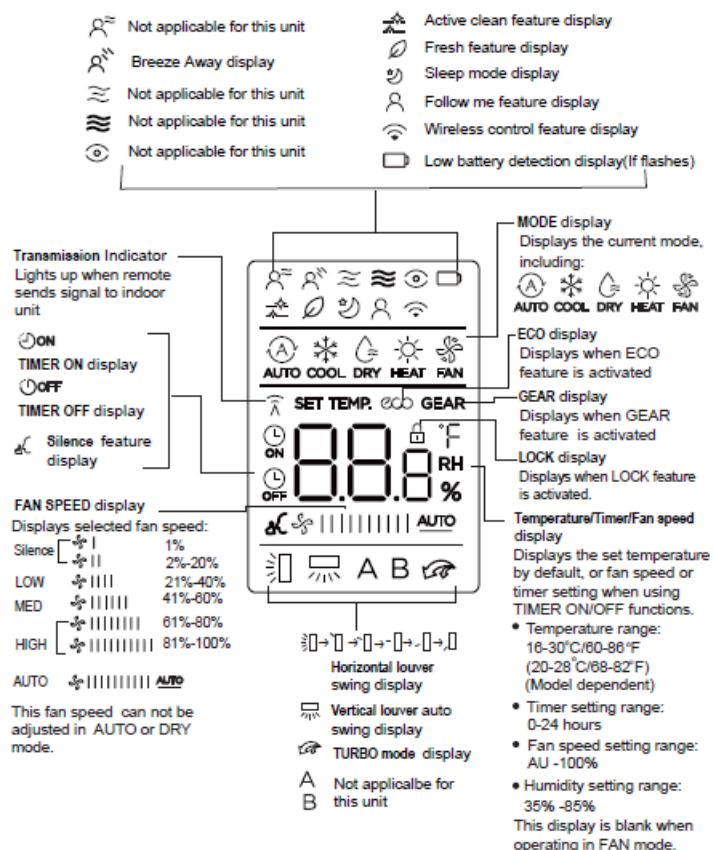
Before you begin using your new air conditioner, make sure to familiarize yourself with its remote control. The following is a brief introduction to the remote control itself. For instructions on how to operate your air conditioner, refer to the How to Use Basic Functions section of this manual.



**Model:** RG10L3(2HS)/BGEFU1 RG10L3(2HS)/BGEF

## Remote Screen Indicators

Information are displayed when the remote controller is power **up**.

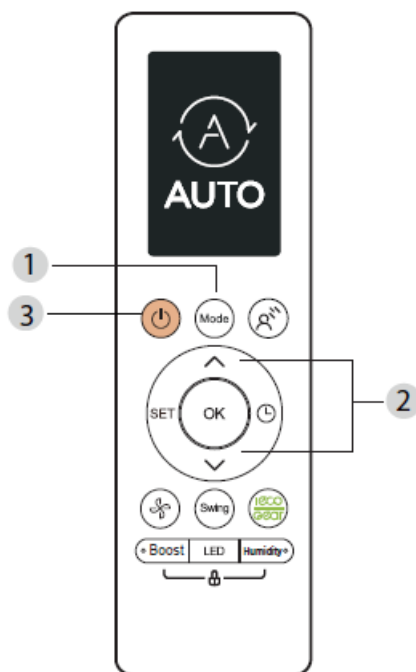


**Note:** All indicators shown in the figure are for the purpose of clear presentation. But during the actual operation, only the relative function signs are shown on the display window.

## How to Use Basic Functions

### Basic operation

**ATTENTION!** Before operation, please ensure the unit is plugged in and power is available.





### SETTING TEMPERATURE

The operating temperature range for units is 16-30°C (60-86°F)/20-28°C (68-82°F) (Model dependent). You can increase or decrease the set temperature in 0.5°C (1°F) increments.

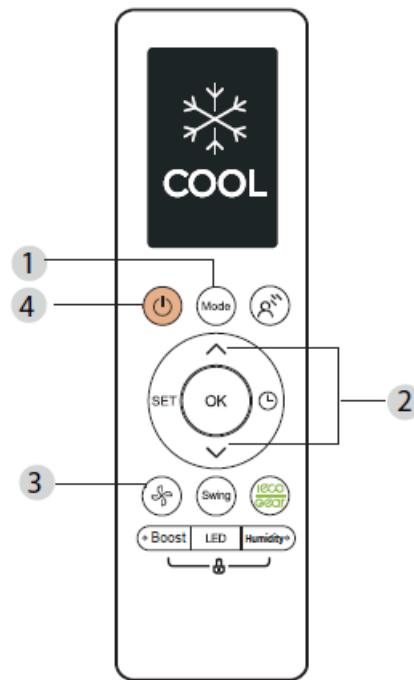
### AUTO Mode



In AUTO mode, the unit will automatically select the COOL, FAN, or HEAT operation based on the set temperature.

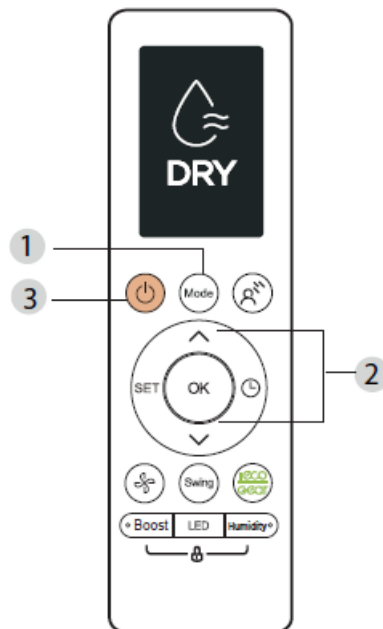
1. Press the MODE button to select AUTO.
2. Set your desired temperature using the TEMP  " or TEMP  " button.
3. Press the ON/OFF button to start the unit.

**NOTE:** FAN SPEED can't be set in AUTO mode.

### COOL Mode



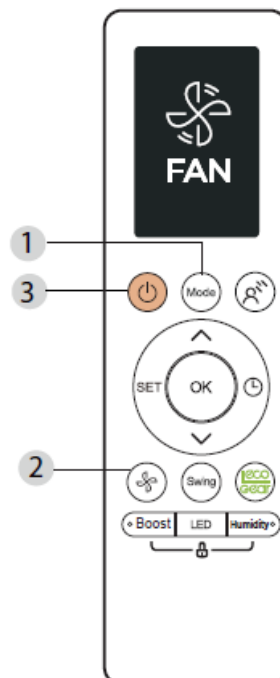
1. Press the MODE button to select COOL mode.
2. Set your desired temperature using the TEMP  " or TEMP  " button.
3. Press FAN button to select the fan speed in a range of AU-100%.
4. Press the ON/OFF button to start the unit.



### DRY Mode (dehumidifying)

1. Press the MODE button to select DRY.
2. Set your desired temperature using the TEMP  $\wedge$  " or TEMP  $\vee$  " button.
3. Press the ON/OFF button to start the unit.

**NOTE:** FAN SPEED cannot be changed in DRY mode.

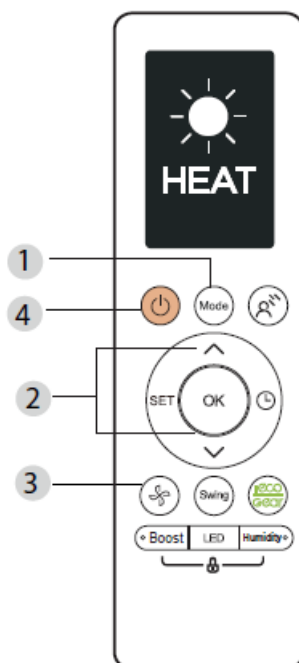


### FAN Mode

1. Press the MODE button to select FAN mode.
2. Press FAN button to select the fan speed in a range of AU-100%.
3. Press the ON/OFF button to start the unit.

**NOTE:** You can't set temperature in FAN mode. As a result, your remote control's LCD screen will not display temperature.





## HEAT Mode

1. Press the MODE button to select HEAT mode.
2. Set your desired temperature using the TEMP or TEMP button.
3. Press FAN button to select the fan speed in a range of AU-100%.
4. Press the ON/OFF button to start the unit.

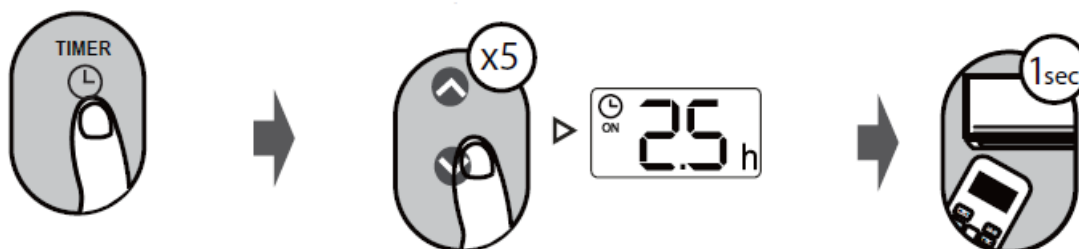
**NOTE:** As outdoor temperature drops, the performance of your unit's HEAT function may be affected. In such instances, we recommend using this air conditioner in conjunction with other heating appliances.

## Setting the TIMER

**TIMER ON/OFF** – Set the amount of time after which the unit will automatically turn on/off.

### TIMER ON setting

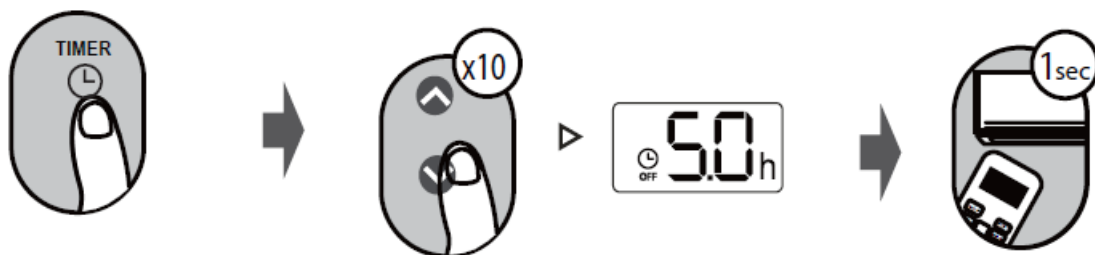
- Press TIMER button to initiate the ON time sequence.
- Press Temp. up or down button for multiple times to set the desired time to turn on the unit.
- Point remote to unit and wait 1sec, the TIMER ON will be activated.



### TIMER OFF setting

- Press TIMER button to initiate the OFF time sequence.

- Press Temp. up or down button for multiple times to set the desired time to turn off the unit.
- Point remote to unit and wait 1sec, the TIMER OFF will be activated.

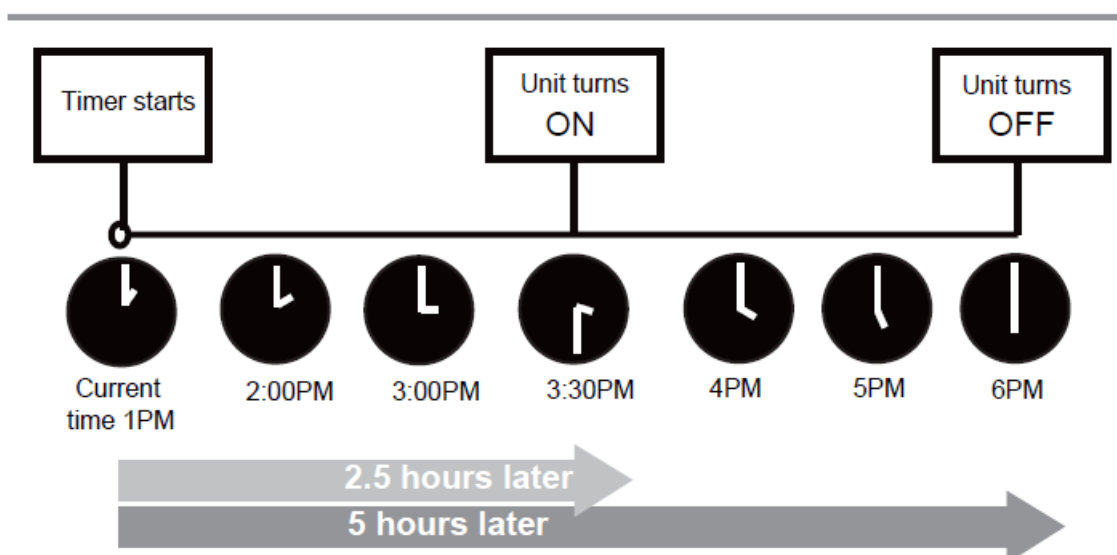
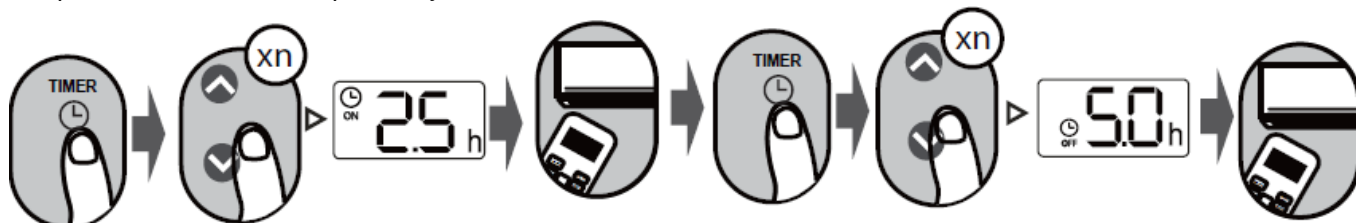


#### NOTE:

1. When setting the TIMER ON or TIMER OFF, the time will increase by 30 minutes increments with each press, up to 10 hours. After 10 hours and up to 24, it will increase in 1 hour increments. (For example, press 5 times to get 2.5h, and press 10 times to get 5h,) The timer will revert to 0.0 after 24.
2. Cancel either function by setting its timer to 0.0h.

#### TIMER ON & OFF setting(example)

Keep in mind that the time periods you set for both functions refer to hours after the current time.

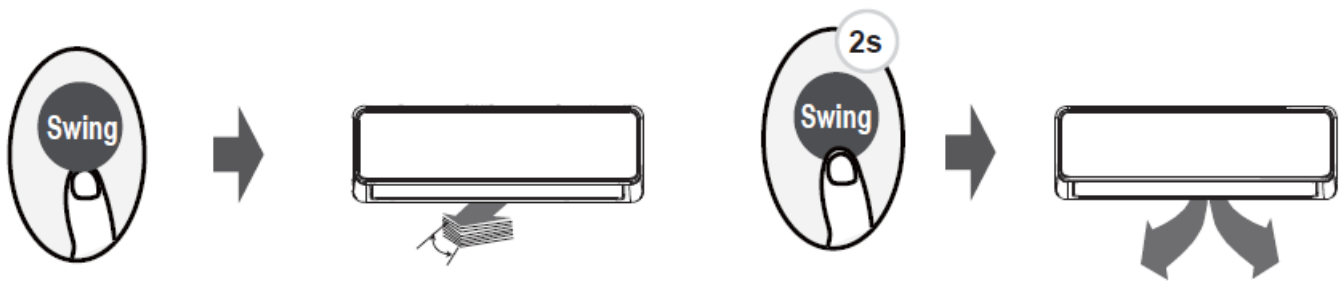


**Example:** If current timer is 1:00PM, to set the timer as above steps, the unit will turn on 2.5h later (3:30PM) and turn off at 6:00PM.

#### How to Use Advanced Functions

##### Swing function

##### Press Swing button

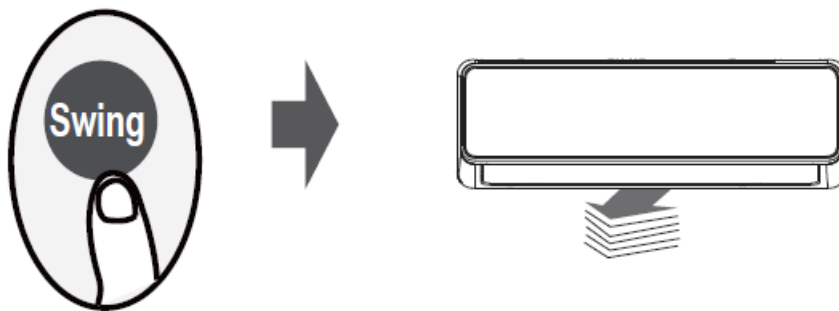


The horizontal louver will swing up and down automatically when pressing Swing button. Press again to make it stop.

Keep pressing this button more than 2 seconds, the vertical louver swing function is activated.  
(Model dependent)

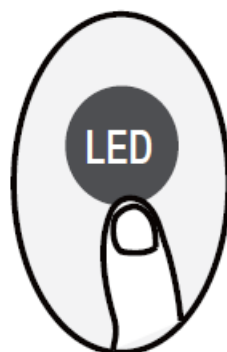
If continue to press the SWING button, five different airflow directions can be set. The louver can be move at a certain range each time you press the button. Press the button until the direction you prefer is reached.

### Airflow direction



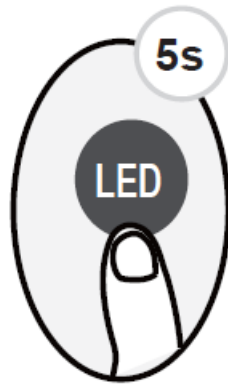
**NOTE:** When the unit is off, press and hold MODE and SWING buttons together for one second, the louver will open for a certain angle, which makes it very convenient for cleaning. Press and hold MODE and SWING buttons together for one second to reset the louver(some units only).

### LED DISPLAY



Press LED button

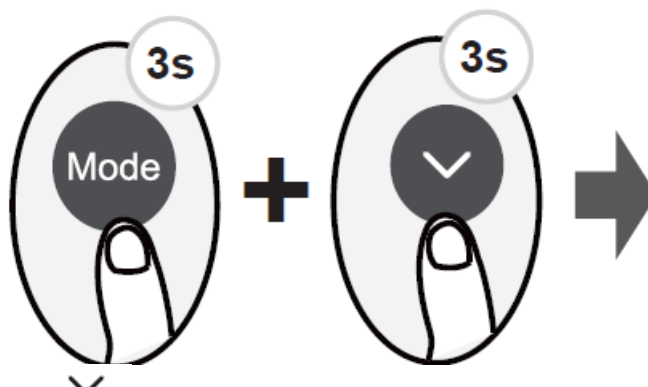
Press this button to turn on and turn off the display on the indoor unit.






Press this button more than 5 seconds (some units)

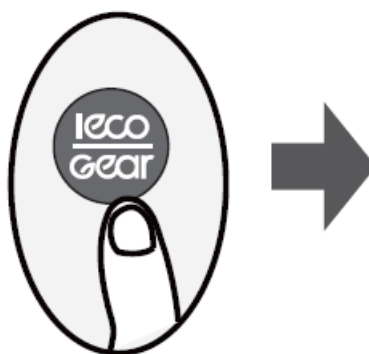
Keep pressing this button more than 5 seconds, the indoor unit will display the actual room temperature. Press more than 5 seconds again will revert back to display the setting temperature.

#### Lifting panel function



Press together Mode button and “” button at the same time more than 3 seconds to activate this function, and the remote controller displays “F2”. When setting the panel status, press the “” or “” buttons of the remote controller to control the rise or fall of the grille, and press any other button to exit the setting.

#### ECO/GEAR function



Press X-ECO button to enter the energy efficient mode in a sequence of following:  
ECO → GEAR → (75%) GEAR(50%) → Previous setting mode → ECO.

**Note:** This function is only available under COOL mode.

#### ECO operation:

Under cooling mode, press this button, the remote controller will adjust the temperature automatically to 24 C/75 F, fan speed of Auto to save energy (only when the set temperature is less than 24 C/75 F). If the set temperature is above 24 C/75 F, press the ECO button, the fan speed will change to Auto, the set temperature will remain unchanged.

**NOTE:** Pressing the ECO button, or modifying the mode or adjusting the set temperature to less than 24 C/75 F will stop ECO operation.

Under ECO operation, the set temperature should be 24 C/75 F or above, it may result into insufficient cooling. If you feel uncomfortable, just press the ECO button again to stop it.

#### **GEAR operation:**

Press the ECO/GEAR button to enter the GEAR operation as following:

75%(up to 75% electrical energy consumption)

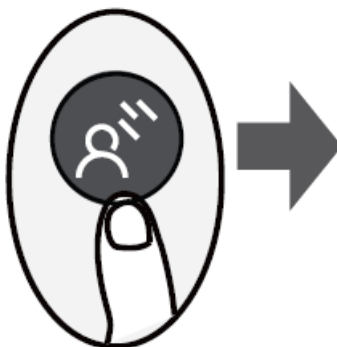
50%(up to 50% electrical energy consumption)

#### **Previous setting mode.**

Under GEAR operation, the display on the remote controller will alternate between electrical energy consumption and set temperature.

#### **BREEZE AWAY**

Press this button



This feature avoids direct air flow blowing on the body and makes you feel indulging in silky coolness.

**NOTE:** This feature is available under cool, Fan and Dry mode only.

#### **Silence function**



Keep pressing Fan button for more than 2 seconds to activate/disable Silence function(some units).

Due to low frequency operation of compressor, it may result in insufficient cooling and heating capacity. Press ON/OFF, Mode, Sleep, Turbo or Clean button while operating will cancel silence function.

#### **FP function**

Press this button 2 times during one second under HEAT Mode and setting temperature of 16 C/60 F or 20 C/68 F(for model RG10L10(2HS)/BGEF only).

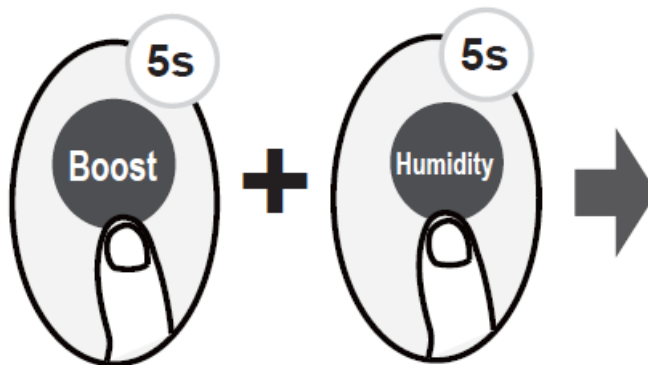


The unit will operate at high fan speed (while compressor on) with temperature automatically set to 8 C/46 F.

**Note:** This function is for heat pump air conditioner only.

Press this button 2 times during one second under HEAT Mode and setting temperature of 16 C/60 F or 20 C/68 F (for model RG10L10(2HS)/BGEF) to activate FP function. Press On/Off, Sleep, Mode, Fan and Temp. button while operating will cancel this function.

### LOCK function



Press together Boost button and Humidity button at the same time more than 5 seconds to activate Lock function. All buttons will not response except pressing these two buttons for two seconds again to disable locking.

### BOOST Function

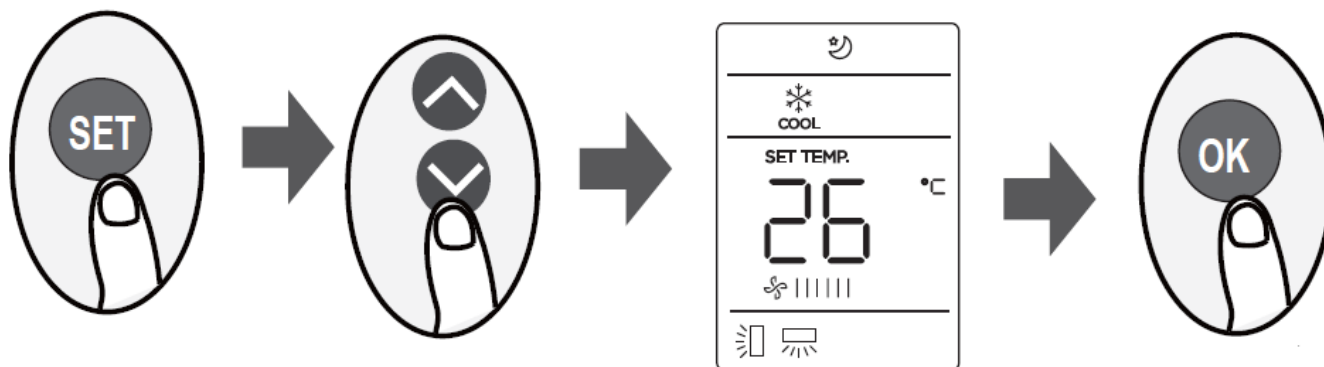
Press Boost button



When you select Boost feature in COOL mode, the unit will blow cool air with strongest wind setting to jump-start the cooling process.

When you select Boost feature in HEAT mode, for units with Electric heat elements, the Electric HEATER will activate and jump-start the heating process.

### SET function



- Press the SET button to enter the function setting, then press SET button or TEMP or TEMP button to select the desired function. The selected symbol will flash on the display area, press the OK button to confirm.
- To cancel the selected function, just perform the same procedures as above.
- Press the SET button to scroll through operation functions as follows:

Active clean ( ) → Fresh ( ) → Sleep ( ) Follow Me ( ) AP mode ( ) →

Active clean ( ) →

[ \* ]: Model dependent

### Active clean function ( ) → (some units) :

The Active Clean Technology washes away dust, mold, and grease that may cause odors when it adheres to the heat exchanger by automatically freezing and then rapidly thawing the frost. When this function is turned on, the indoor unit display window appears “CL”, after 20 to 45 minutes, the unit will turn off automatically and cancel CLEAN function.

### FRESH function ( ) → (some units) :

When the FRESH function is initiated, the . Ionizer/Plasma Dust Collector(depending on models) is energized and will help to remove pollen and impurities from the air

### Sleep function

The SLEEP function is used to decrease, energy use while you sleep (and don t need the same temperature settings to stay comfortable). This function can only be activated via remote control. USER S MANUAL.

**Note:** The SLEEP function is not available in FAN or DRY mode.

### Follow me function ( ) :

The FOLLOW ME function enables the remote control to measure the temperature at its current location and send this signal to the air conditioner every 3 minutes interval. When using AUTO, COOL or HEAT modes, measuring ambient temperature from the remote control(instead of from the indoor unit itself) will enable the air conditioner to optimize the temperature around you and ensure maximum comfort.


**NOTE:** Press and hold Boost button for seven seconds to start/stop memory feature of Follow Me function.

- If the memory feature is activated, „On displays for 3 seconds on the screen.
- If the memory feature is stopped, „Of, , displays for 3 seconds on the screen.
- While the memory feature is activated, press the ON/OFF button, shift the mode or power failure will not cancel the Follow me function.

#### AP function( )(some units) :

Choose AP mode to do wireless network configuration. For some units, it doesn't work by pressing the SET button. To enter the AP mode, continuously press the LED button seven times in 10 seconds.

## Documents / Resources

	<a href="#">Carrier RG10L3 Remote Controller</a> [pdf] Owner's Manual RG10L3, Remote Controller, RG10L3 Remote Controller, Controller
---	--

## References

-  [Broadcast- und Medientechniklösungen | Rohde & Schwarz](#)