



Carrier RG10A2/BGEF Remote Controller Owner's Manual

[Home](#) » [Carrier](#) » Carrier RG10A2/BGEF Remote Controller Owner's Manual 



RG10A2/BGEF Remote Controller Owner's Manual



Contents

- [1 RG10A2/BGEF Remote Controller](#)
- [2 DISPLAY AND BUTTONS](#)
- [3 HOW TO USE ADVANCED FUNCTIONS](#)
- [4 Documents / Resources](#)
- [5 Related Posts](#)

RG10A2/BGEF Remote Controller

INSTRUCTIONS OF USING WIRELESS REMOTE CONTROL

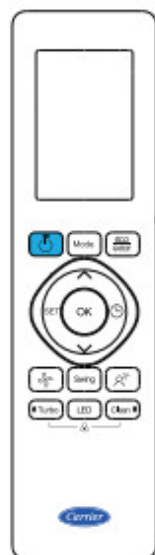
- The remote control uses two alkaline batteries (1.5 Volts).
- Do not use old batteries or batteries of different types, as this may cause the controller malfunction.
- If you do not use the remote control for more than two months, please remove the batteries. bOtherwise battery leakage may damage the remote control.
- The average battery life during normal use is approximately half a year.
- Replace the batteries when there is no receiving beep coming from the indoor unit or transmission indicator on the remote control fails to light.
- The maximum operating distance for the remote control is approximately 8 meters.
- The transmitter of remote control must be directed toward the receiver of indoor unit when pressing the buttons of the desired functions. An acoustical acknowledgement sound (beep) will indicate that signal has been received.
- Avoid obstacles obstructions such as curtains, doors or other materials between the remote control and the receiver of indoor unit to avoid blocking the signals from the remote control to the indoor unit.
- Avoid direct sunlight on the receiver of indoor unit, which may interfere with good signal reception and the air conditioner may not work properly. Draw the curtains to avoid direct sunlight.
- Keep the remote control away from water. Do not let the remote control fall down.
- Never use objects with sharp point to press the button on the remote control.
- Prevent any liquid from falling into the remote control.
- If other electric applications react to the remote control, move these applications.
- Do not dispose of batteries as unsorded municipal waste. Refer to local laws for proper disposal of batteries.



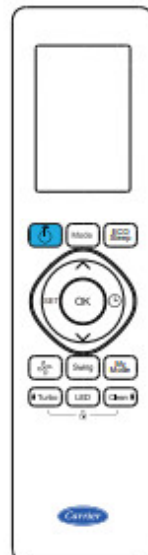
Correct Disposal of Battery

- This marking printed in the batteries attached to your Air Conditioning product is information for end-uses.
- Batteries, at their end-of-life, should be disposed of separately from general household waste. Please, dispose of batteries correctly at your local community waste collection or the recycling center.

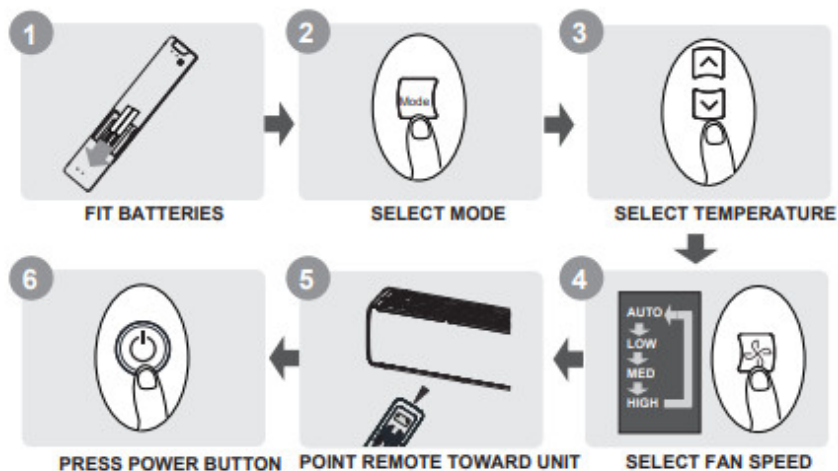
QUICK START



MODEL:
RG10A2(U2S)/BGEF
RG10A10(U2S)/BGEF



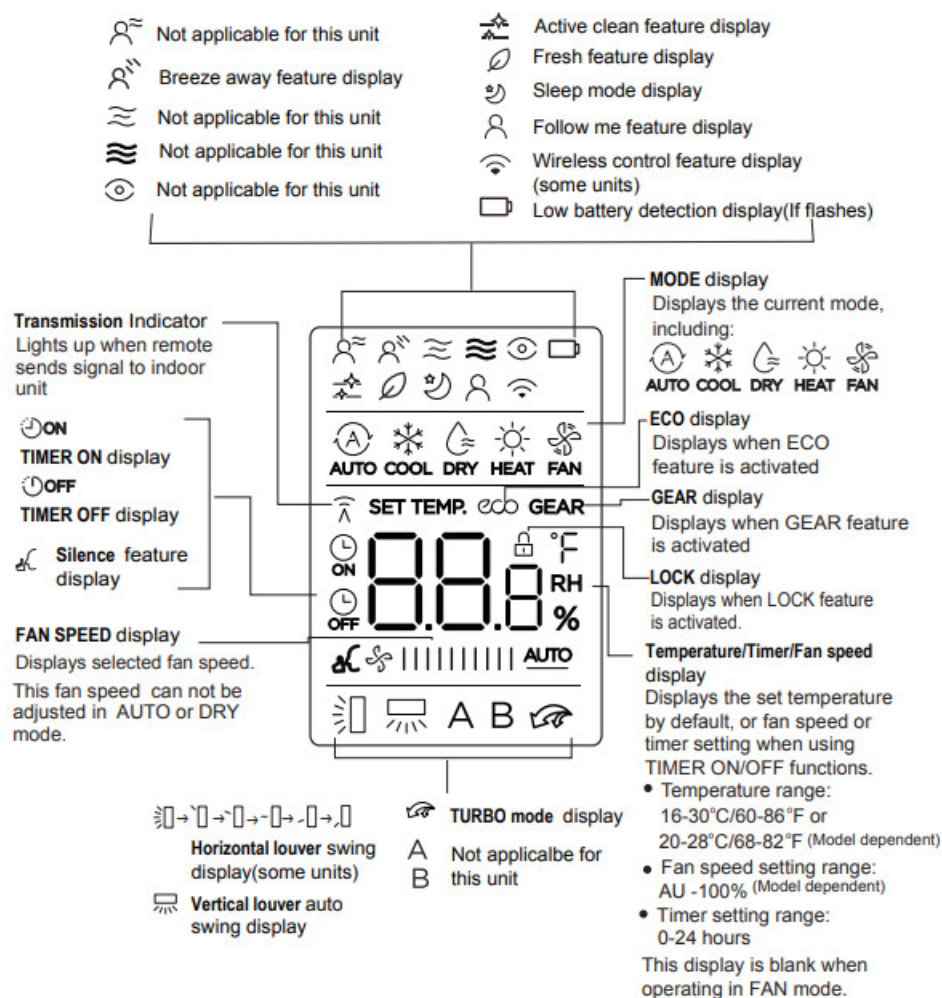
MODEL:
RG10B2(U2)/BGEF
RG10B10(U2)/BGEF
RG10B2(U2)/BGCEF



DISPLAY AND BUTTONS

2.1 DISPLAY

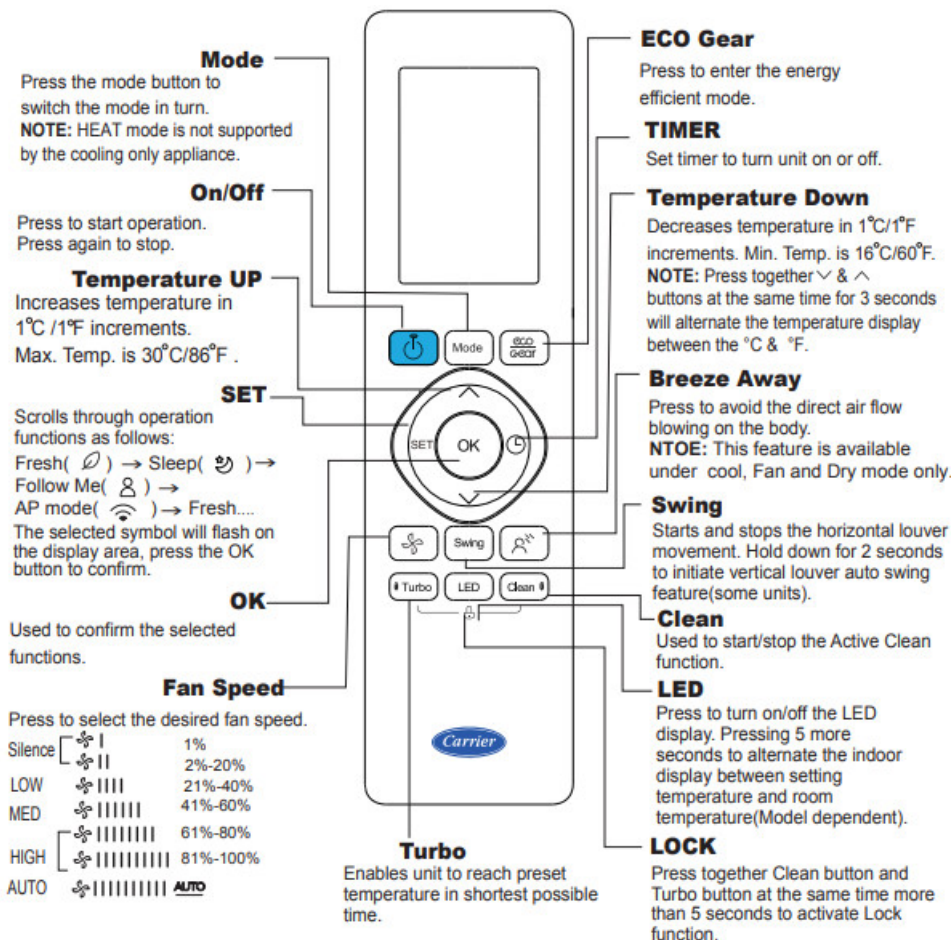
Information are displayed when the remote controller is powered up.



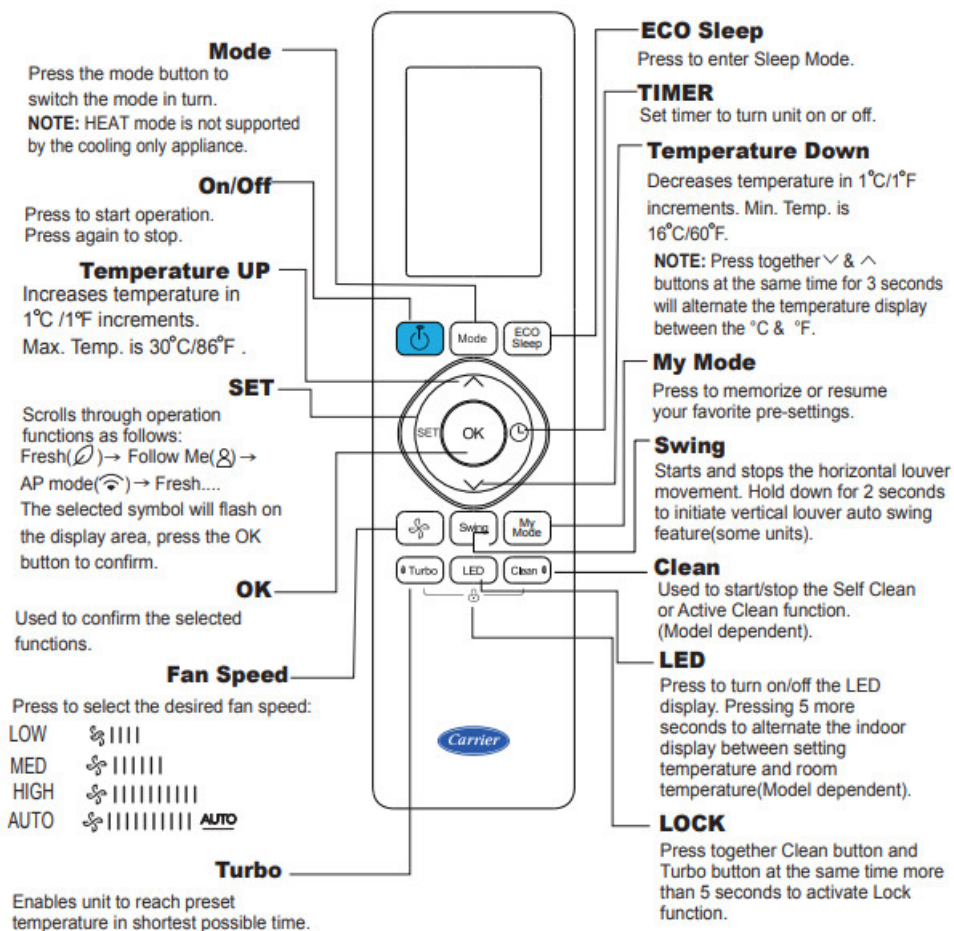
Note:

All indicators shown in the figure are for the purpose of clear presentation. But during the actual operation, only the relative function signs are shown on the display window.

2.2 BUTTONS



MODEL: RG10A2(U2S)/BGEF
 RG10A10(U2S)/BGEF(20-28 C/68-82 F)
2.2 BUTTONS



MODEL:RG10B2(U2)/BGEF

RG10B10(U2)/BGEF(20-28 C/68-82 F)

RG10B2(U2)/BGCEF((Cooling only models, AUTO mode and HEAT mode are not available)

NOTE:

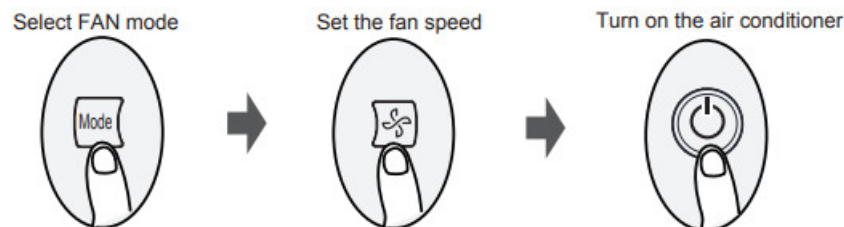
1. Above illustration shows all the features. For actual model, only the relevant parts are shown.
2. Buttons design might be slightly different from the actual one.

3.1 BASIC OPERATIONS

!ATTENTION

Before operation, please ensure the unit is plugged in and power is available.

AUTO Mode



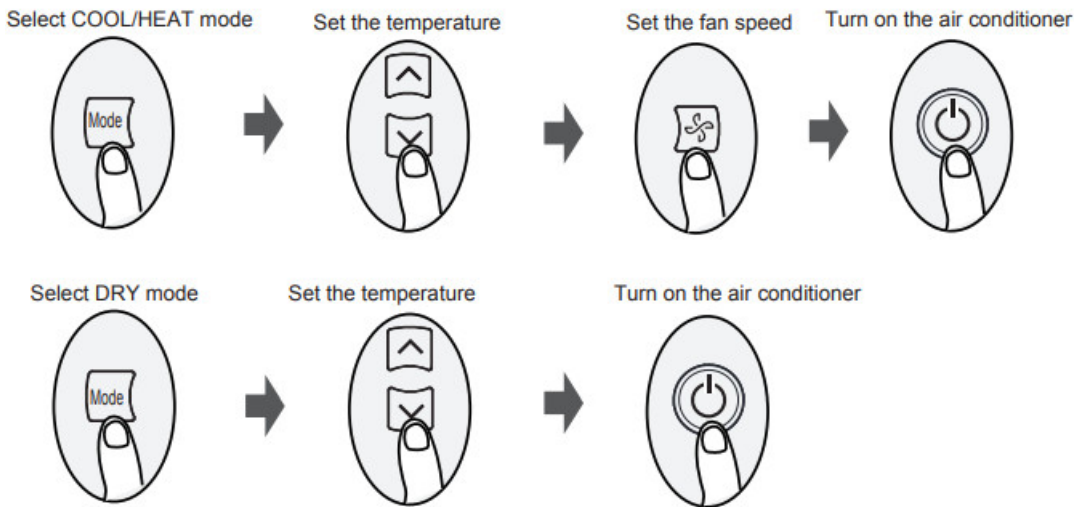
NOTE:

1. In AUTO mode for heat pump system, the air conditioner can automatically choose the mode of Cool, Heat or Fan by sensing the difference between the actual room temperature and setting temperature.
2. In AUTO mode for cooling only system, the air conditioner can automatically choose the mode of Cool or Fan

by sensing the difference between the actual room temperature and setting temperature.

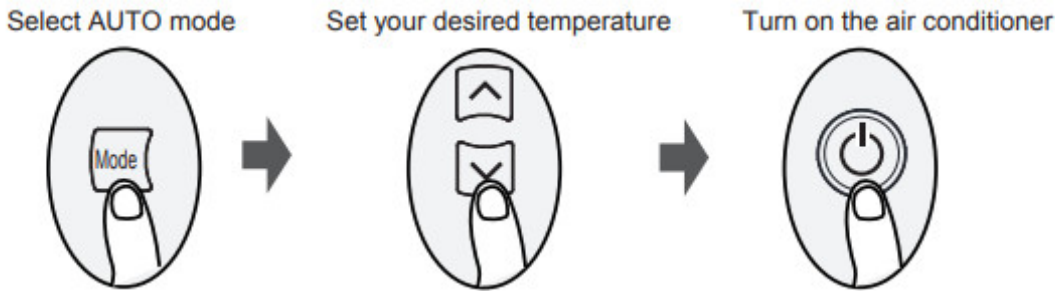
3. In AUTO mode, fan speed can not be set.

COOL or HEAT Mode



DRY Mode

NOTE:
In DRY mode, fan speed can not be set since it has already been automatically controlled.



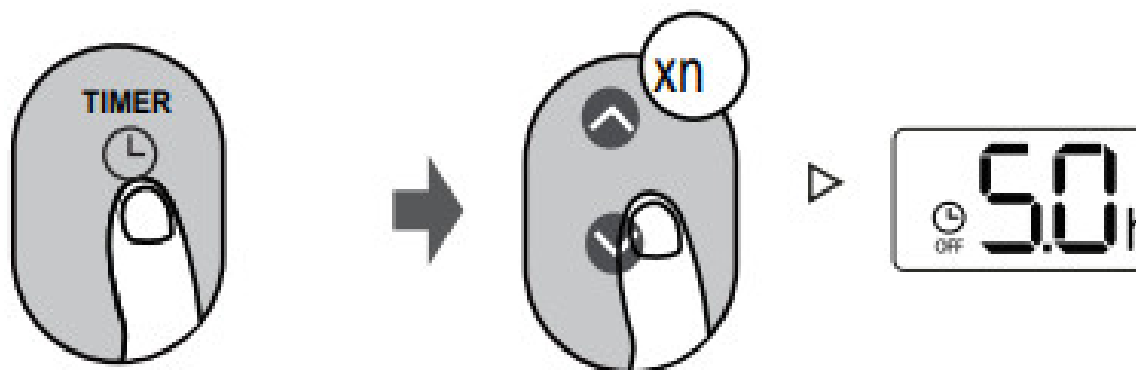
3.2 TIMER FUNCTION

Press TIMER button to initiate the ON time sequence.	Press Temp. up or down button for for multiple times the desired time to turn on the unit.
<p>The diagram shows the process of setting a timer. It starts with a finger pressing the 'TIMER' button (which has a clock icon). An arrow points to the next step where a finger presses the temperature up/down button multiple times, indicated by a circle with 'xn' around the button. A final arrow points to a digital display showing '25' with a clock icon and 'ON' below it.</p>	

TIMER OFF

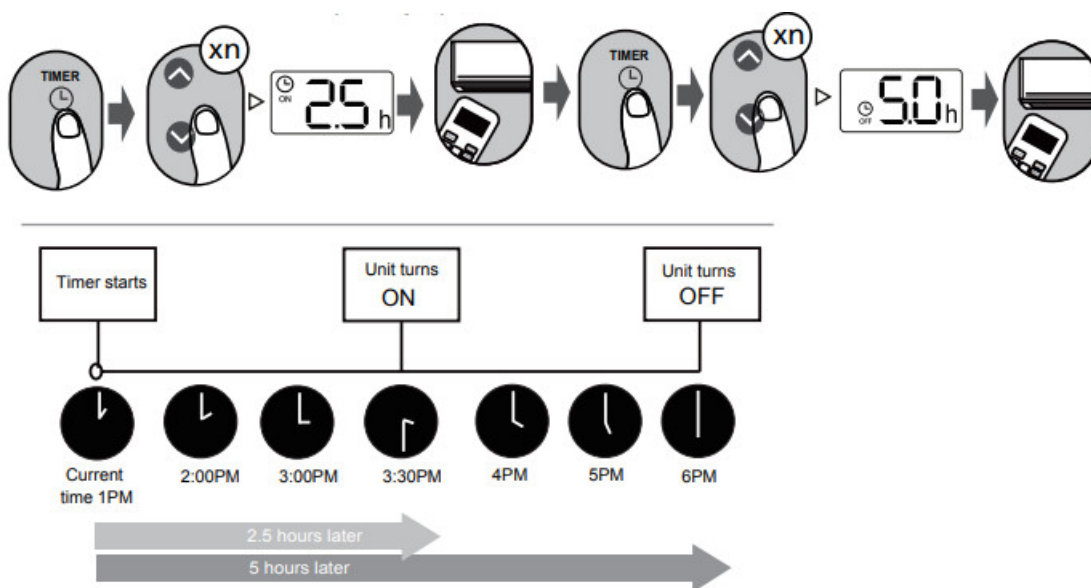
Press TIMER button to initiate the OFF time sequence.

Press it for multiple times to set the desired time to turn the unit.



1. When setting the TIMER ON or TIMER OFF, the time will increase by 30 minutes increments with each press, up to 10 hours. After 10 hours and up to 24, it will increase in 1 hour increments. (For example, press 5 times to get 2.5h, and press 21 times to get 11h,) The timer will revert to 0.0 after 24.
2. Cancel either function by setting its timer to 0.0h.

Setting TIMER ON & OFF (example).

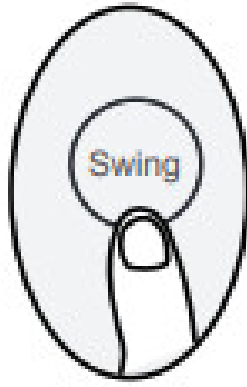


Example: If current timer is 1:00PM, to set the timer as above steps, the unit will turn on 2.5h later (3:30PM) and turn off at 6:00PM.

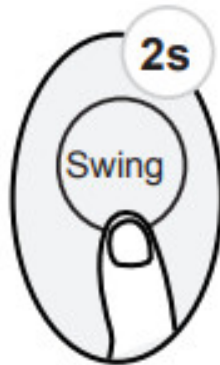
HOW TO USE ADVANCED FUNCTIONS

Swing

Press Swing button when the unit is turned on.



The horizontal louver will swing up and down automatically when pressing Swing button. Press again to make it stop.



Keep pressing this button more than 2 seconds, the vertical louver swing function is activated. (Model dependent) If continue to press the SWING button, five different airflow directions can be set (Model dependent). The louver can be move at a certain range each time you press the button. Press the button until the direction you prefer is reached.

Eco Gear

Press this button under COOL Mode to enter the energy efficient mode.



Press this button to enter the energy efficient mode in a sequence of following:

ECO > GEAR(75%) > GEAR(50%) > Previous setting mode ECO

Note: This function is only available under COOL mode.

ECO operation:

Under cooling mode, press this button, the remote controller will adjust the temperature automatically to 24° C/75° F, fan speed of Auto to save energy (only when the set temperature is less than 24° C/75° F). If the set temperature is above 24° C/75° F, press this button, the fan speed will change to Auto, the set temperature will remain unchanged.

GEAR operation:

Press the Eco/Gear button to enter the GEAR operation as following:

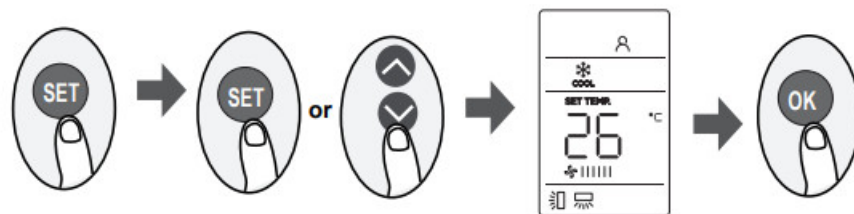
75%(up to 75% electrical energy consumption) 50%(up to 50% electrical energy consumption) Previous setting mode. Under GEAR operation, the display on the remote controller will alternate between electrical energy consumption and set temperature.

Turbo

Press this button



The unit will operate at the biggest capacity output to reach the setting Temp. quickly.
Press this button to activate Turbo feature. It enables the unit to reach the set temperature in the shortest time.
Press it again to disable it.(Model dependent)



- Press the SET button to enter the function setting, then press SET button or TEMP or TEMP button to select the desired function. The selected symbol will flash on the display area, press the OK button to confirm.
- To cancel the selected function, just perform the same procedures as above.
- **Press the SET button to scroll through operation functions as follows:**

*Fresh (🌿) Sleep (💤) Follow Me (👤) AP mode (📶) Fresh

[*]: Model dependent

NOTE: If your remote controller has sleep button, you can not use the SET button to select the sleep feature.

FRESH function (🌿) (some units) : When the FRESH function is initiated, the Ionizer/Plasma Dust Collector(depending on models) is energized and will help to remove pollen and impurities from the air.

Sleep function (💤) (some units) :

The SLEEP function is used to decrease energy use while you sleep(and don't need the same temperature settings to stay comfortable). This function can only be activated via remote control. For the details, see "Sleep operation" in "USER'S MANUAL".

NOTE: The SLEEP function is not available in FAN and DRY mode.

Follow me function (👤) : The FOLLOW ME function enables the remote control to measure the temperature at its current location and send this signal to the air conditioner every 3 minutes interval. When using AUTO, COOL or HEAT modes, measuring ambient temperature from the remote control(instead of from the indoor unit itself) will enable the air conditioner to optimize the temperature around you and ensure maximum comfort.

NOTE: Press and hold Turbo button for seven seconds to start/stop memory feature of Follow Me function.

- If the memory feature is activated, “ On” displays for 3 seconds on the screen.
- If the memory feature is stopped, “OF ” displays for 3 seconds on the screen.
- While the memory feature is activated, press the ON/OFF button, shift the mode or power failure
- will not cancel the Follow me function.

AP function(📶)(some units) :

Choose AP mode to do wireless network configuration. For some units, it doesn't work by pressing the SET button. To enter the AP mode, continuously press the LED button seven times in 10 seconds.

F. P.

Press this button 2 times during one second under HEAT Mode and setting temperature of 16 C/60 F(for models of RG10B2(U2)/BGEF and RG10A2(U2S)/BGEF) or 20 C/68 F(for models of RG10B10(U2)/BGEF and RG10A10(U2S)/BGEF).



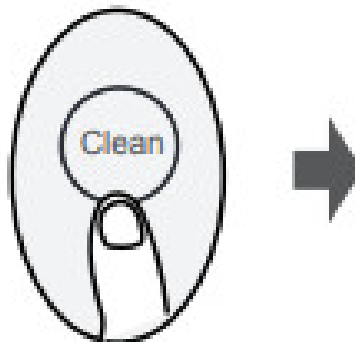
The unit will operate at high fan speed (while compressor on) with temperature automatically set to 8 C/46 F.

Note:This function is for heat pump air conditioner only.

Press this button 2 times under HEAT Mode and setting temperature of 16 C/60 F or 20 C/68 F to activate the freeze protection function. It will help to keep the room above 0 C/32 F (freezing point) in severe cold winter. Press On/Off, Sleep, Mode, Fan and Temp. button while operating will cancel this function.

Clean

Press this button to start/stop Self clean or Active clean function(Model dependent).



Self clean function(some units) : Airborne bacteria can grow in the moisture that condenses around heat exchanger in the unit. With regular use, most of this moisture is evaporated from the unit. Under Self clean operation, the unit will clean itself automatically. After cleaning, the unit will turn off automatically. Note: You can only activate this function in COOL or DRY or AUTO COOL(some units) mode.

Active clean function(some units) : The Active Clean Technology washes away dust, mold, and grease that may cause odors when it adheres to the heat exchanger by automatically freezing and then rapidly thawing the frost. When this function is turned on, the indoor unit display window appears “CL”, after 20 to 130 minutes, the unit will turn off automatically and cancel Clean function.

Silence

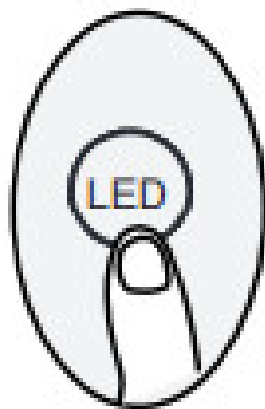
Keep pressing Fan button for more than 2 seconds to activate/disable Silence function.



Due to low frequency operation of compressor, it may result in insufficient cooling and heating capacity. Press ON/OFF, Mode, Sleep button, turn on F.P.or Self clean function while operating will cancel silence function.(Model dependent)

LED

Press LED button



Press this button more than 5 sec



Press this button to turn on and turn off the display on the indoor unit.

Keep pressing this button more than 5 seconds, the indoor unit will display the actual room temperature. Press more than 5 seconds again will revert back to normal (Model dependent).

ECO Sleep

Press ECO Sleep button under Auto/Cool/Heat mode

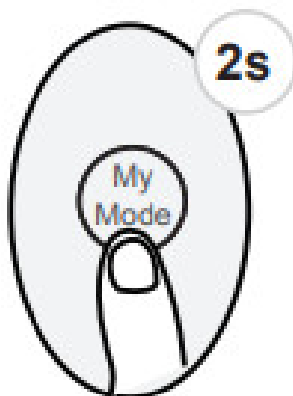


The set temp. will increase(cooling) or decrease (heating) by 1 C/1 F per hour for the first 2hs. Please refer to the OWNER'S MANUAL for more details.

This Sleep operation saves energy and improves night time comfort by synchronising with the body's metabolism. The sleep function is not available in Fan or Dry mode.

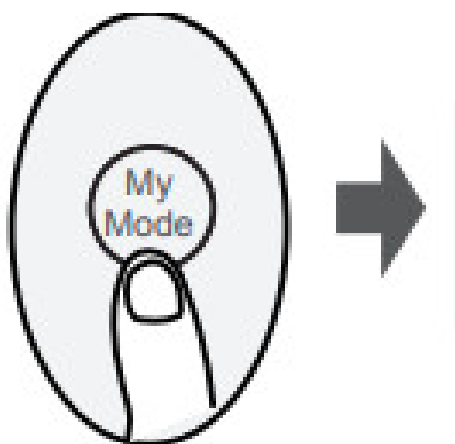
My Mode

Press this button more than 2 seconds



The unit will memorize the current setting mode, Temp., fan).

Press this button



The unit will restore to the setting you made last time.

My Mode function enable you to memorize or restore your favorite settings (mode, temperature and fan speed).

Lock Mode

Press together **Turbo** button and **Clean** button at the same time more than 5 seconds to activate



At lock mode , all buttons will not response except pressing these two buttons for two seconds again to disable locking.

NOTES FOR USING REMOTE CONTROL

The device could comply with the local national regulations.

- In Canada, it should comply with CAN ICES-3(B)/NMB-3(B).
- In USA, this device complies with part 15 of the FCC Rules. Operation is subject to the following two bconditions:
 - (1) This device may not cause harmful interference, and
 - (2) this device must accept any interference received, including interference that may cause undesired operation.

This equipment has been tested and found to comply with the limits for a Class B digital device, pursuant to part 15 of the FCC Rules. These limits are designed to provide reasonable protection against harmful interference in a residential installation. This equipment generates, uses and can radiate radio frequency energy and, if not installed and used in accordance with the instructions, may cause harmful interference to radio communications. However, there is no guarantee that interference will not occur in a particular installation. If this equipment does cause harmful interference to radio or television reception, which can be determined by turning the equipment off and on, the user is encouraged to try to correct the interference by one or more of the following measures:

- Reorient or relocate the receiving antenna.
- Increase the separation between the equipment and receiver.
- Connect the equipment into an outlet on a circuit different from that to which the receiver is connected.
- Consult the dealer or an experienced radio/TV technician for help.
- Changes or modifications not expressly approved by the party responsible for compliance could void user's authority to operate the equipment.

Carrier is committed for continuous improvement of Carrier products according to national and international standards to ensure the highest quality and reliability standards, and to meet market regulations and requirements. All specifications subject to change without prior notice according to Carrier policy of continuous development



AHI CARRIER S.E. EUROPE AIRCONDITIONING S.A.
18, KIFISOU AVENUE 10442 ATHENS, GREECE
TEL: +30-210-6796300.



[Carrier RG10A2/BGEF Remote Controller](#) [pdf] Owner's Manual
CA05R-RG67N-16117000001534, RG10A2 BGEF, Remote Controller, RG10A2 BGEF Remote
Controller, Controller, Remote