



# carlson 60 Series Double Door Secure Crate Instruction Manual

[Home](#) » [Carlson](#) » carlson 60 Series Double Door Secure Crate Instruction Manual 



## DOUBLE DOOR SECURE CRATE

Models: 6021, 6022, 6023, 6024, 6025

- READ ALL INSTRUCTIONS BEFORE ASSEMBLY AND USE OF PRODUCT.  
KEEP INSTRUCTIONS FOR FUTURE USE.



Carlson Pet Products, Inc.

3200 Corporate Center Drive, Suite 105/ Burnsville, MN 55306, USA/, É.-U./, EE. UU.



[www.carlsonpetproducts.com](http://www.carlsonpetproducts.com)



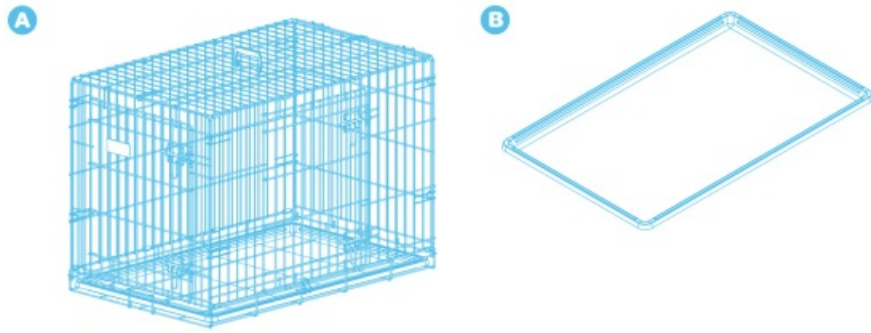
952.435.1084

Made in Vietnam

### Contents

- [1 Before Assembly](#)
- [2 Assembling Your Crate](#)
- [3 Operating the Door](#)
- [4 Disassembling your crate](#)
- [5 Documents / Resources](#)
  - [5.1 References](#)

## Before Assembly



**PLEASE CHECK TO MAKE SURE YOU HAVE THE FOLLOWING PARTS:**

A Crate (1)

B Tray (1)

**BEFORE USING PRODUCT**

Read and follow all instructions carefully to ensure that your crate is properly assembled. Improper assembly could result in the crate becoming unsafe. Please keep these instructions for your reference.

**CARE AND MAINTENANCE**

Periodically check the pen for signs of damage, wear, or missing components. Do not use if any part is missing, worn or damaged. Do not use abrasive cleaners or bleach. Clean with warm water and a mild detergent. Do not machine wash.

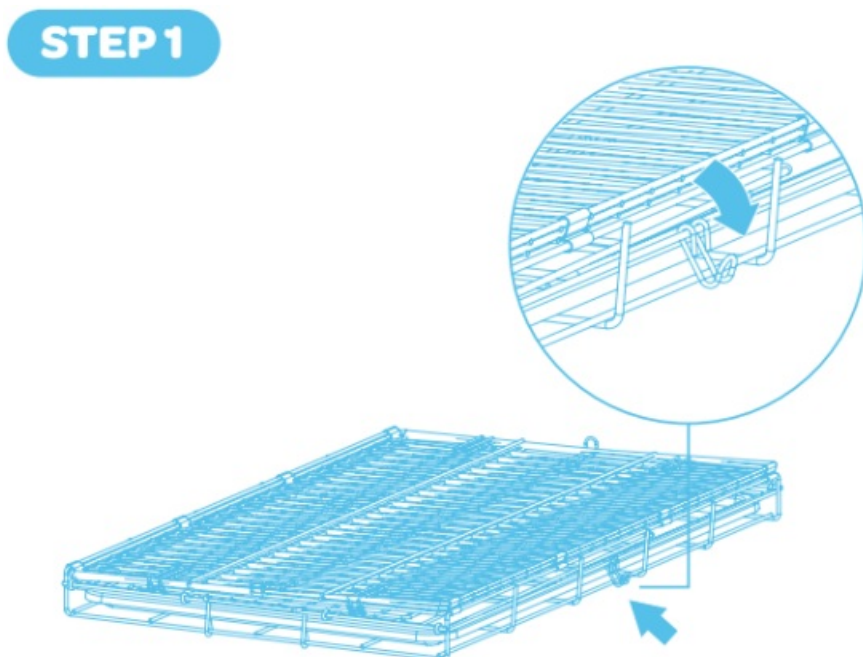
**90 DAYS LIMITED WARRANTY**

If, during the first 90 days after consumer purchase of the item, under reasonable and non-commercial use and conditions of maintenance, it fails while owned by the original purchaser because of the quality of materials or workmanship of finish and assembly, Carlson Pet Products, Inc. will replace or repair it at Carlson's option. PROOF OF PURCHASE REQUIRED.

**Assembling Your Crate**

**STEP 1**

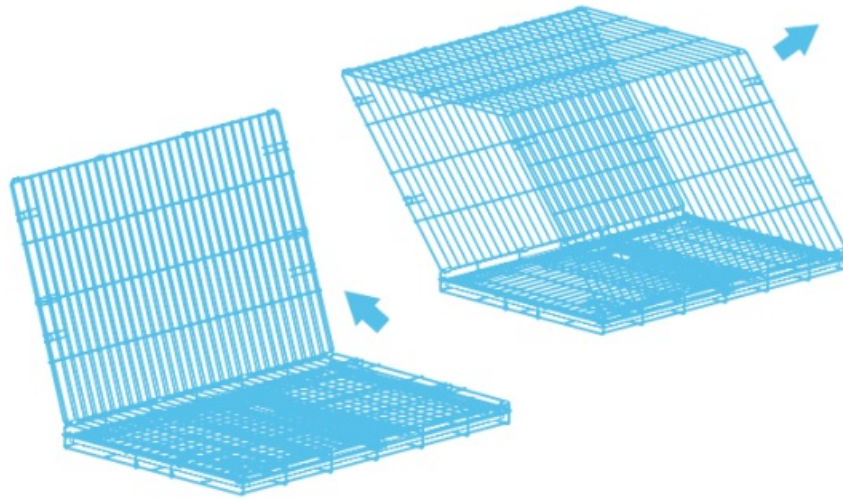
Set the crate on the ground with the tray on the bottom. Unhook the latch from the side of the crate.



**STEP 2**

Unfold the panels, like turning the page of a book. Then pull upwards from the middle of the crate panels.

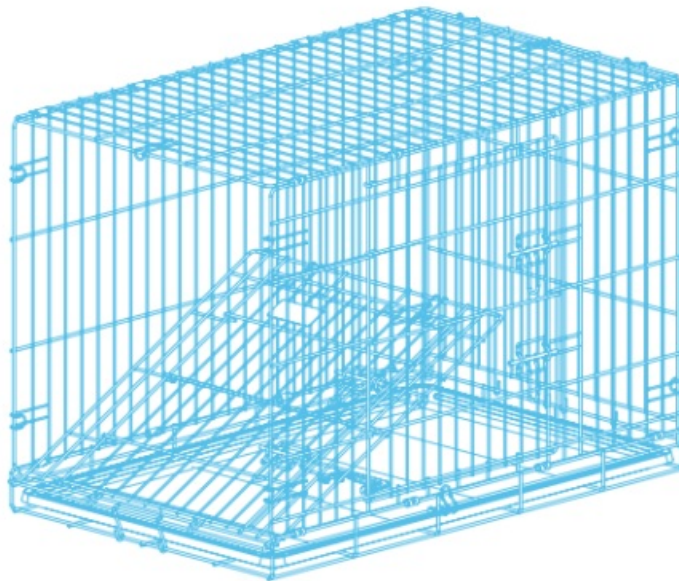
## STEP 2



## STEP 3

Hold the top panel up, reach inside the crate and pull the door panel forward until it snaps into the 7 hooks located around the edges of the crate.

## STEP 3

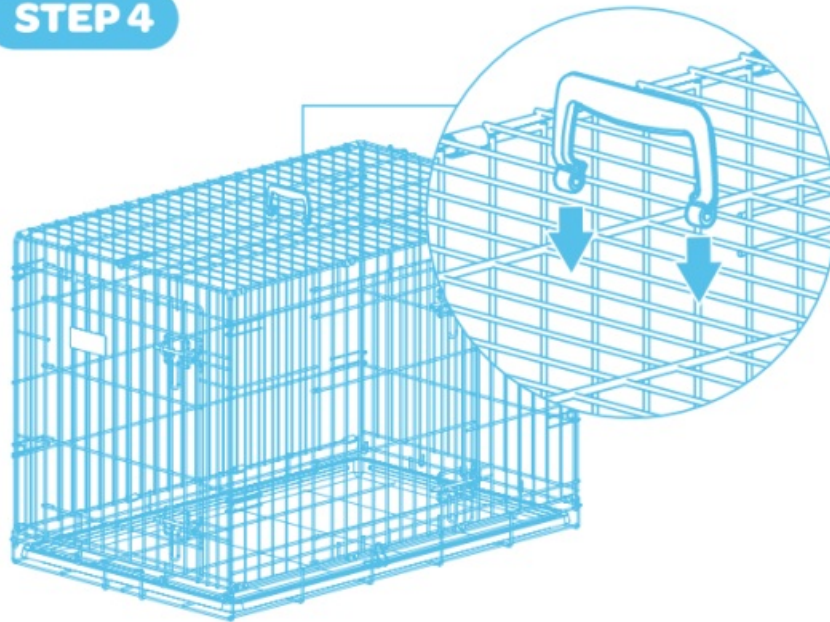


**NOTE:** A forceful pull will allow the hooks to snap into place.

## STEP 4

Repeat Step 3 on the other side of the crate. Attach handle to center top crate panel, as shown illustrated.

#### STEP 4



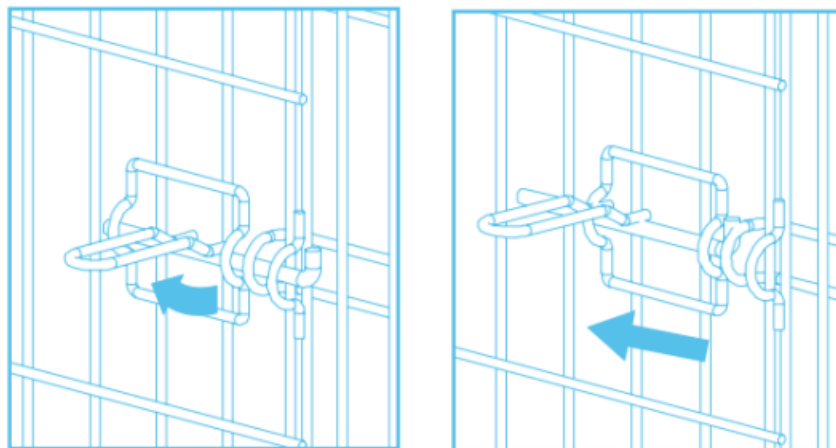
**NOTE:** For cleaning purposes, the bottom tray is removable. Do NOT carry pet in crate with handle.

### Operating the Door

#### STEP 1

To open, lift up the locking handle and slide to the left to release from the crate frame. If your crate has more than one locking handle repeat step for all locking handles to open the door.

#### STEP 1

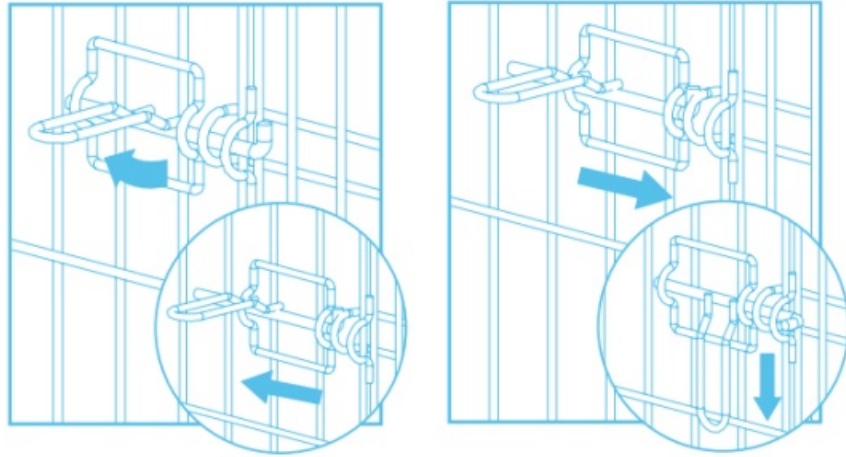


**NOTE:** Crate size extra small and small include one latch on front door.

#### STEP 2

To close, lift up and slide the locking handle all the way to the left and shut the door. Slide the locking handle to the right and push down to secure the locking handle to the crate frame. If your crate has more than one locking handle repeat step for all locking handles to open the door.

## STEP 2



### Disassembling your crate

#### STEP 1

Unhook the 7 hooks located around the edges of the door panel by pushing the panel into the crate.

#### STEP 2

Repeat Step 1 on the other side of the crate.

#### STEP 3

Allow the panels to all collapse flat. Fold the panels, like turning the page of a book.

#### STEP 4

Hook the latch on the side of the crate to lock all the panels together.



### WARNING

- For use with pets only.
- To avoid choking and other serious injuries, remove all collars, harnesses and other items, such as pet clothing, before allowing pet in the crate.
- This crate is not designed to restrain aggressive breeds of dogs.
- Never use a crate as a method of punishment.
- Pets should not be left unattended in the crate until and unless you are certain that the pet will respond properly to being left alone in the crate..
- Pet should have access to food and water at all times while in crate.
- Do not place any other items, such as toys, in the crate unless your veterinarian or trainer advises you that it is safe to do so.
- Do not allow more than one pet in the crate at a time.
- Do not allow children to play in, on or around the crate.
- Keep crate door closed around children to avoid the hazard of protruding hinge or latch pins.
- If any structural component is discovered to be broken or missing, stop use of crate immediately.

### Documents / Resources



[carlson 60 Series Double Door Secure Crate](#) [pdf] Instruction Manual  
6021, 6022, 6023, 6024, 6025, 60 Series Double Door Secure Crate, 60 Series, Double Door S  
ecure Crate, Secure Crate, Crate

References

- [User Manual](#)

[Manuals+](#), [Privacy Policy](#)

This website is an independent publication and is neither affiliated with nor endorsed by any of the trademark owners. The "Bluetooth®" word mark and logos are registered trademarks owned by Bluetooth SIG, Inc. The "Wi-Fi®" word mark and logos are registered trademarks owned by the Wi-Fi Alliance. Any use of these marks on this website does not imply any affiliation with or endorsement.