



Carlinkit HD2401-EC Full Android System User Manual

[Home](#) » [Carlinkit](#) » Carlinkit HD2401-EC Full Android System User Manual 

Contents

- 1 Carlinkit HD2401-EC Full Android System
- 2 User Manual
- 3 Function Introduction
- 4 Product Specification
- 5 Compatible Cars and Mobile Phones
- 6 Port Description
- 7 Connection Instruction
- 8 Wireless CarPlay/Android Auto Connection Instructions
- 9 Download APPs
- 10 Detailed FAQ
- 11 After-Sales Service
- 12 Documents / Resources
 - 12.1 References
- 13 Related Posts

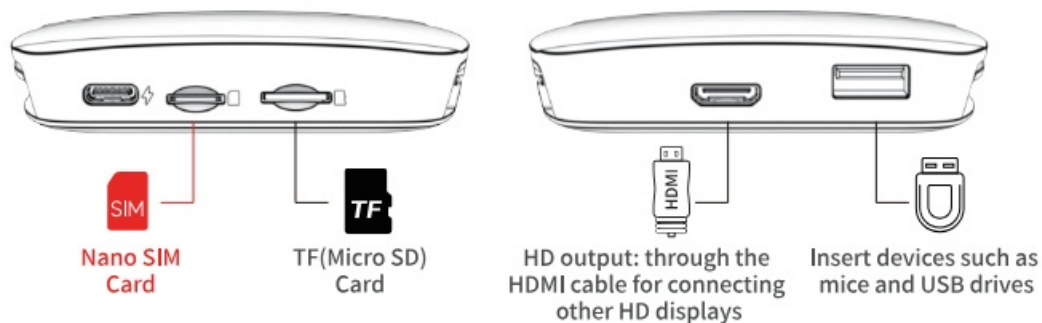
Carlinkit

Carlinkit HD2401-EC Full Android System



User Manual

Full Android System



Note: Don't insert the SIM/TF card backward, the wrong way will damage the products card slot

<https://carlinkitcarplay.com/>

Function Introduction

The product expands the open Android system platform through the car USB interface, supports the installation of applications at any time, and realizes more audio-visual entertainment and navigation functions. Besides, it also supports 4G/GPS/Bluetooth/Phone/Mobile Connectivity enables wireless CarPlay and wireless Android Auto. By connecting to other displays through the HDMI port, high-definition image output can be achieved, and the screen can be split and switched to display without interfering with each other and affecting driving, thus achieving the fun of sharing high-definition images.

Product Specification

- Operating System: Android
- system Operator Version: NA(North America)/
- EAU(Europe, Asia)/JP(Japan)
- Communication Standard: LTD-FDD/LTE-TDD/WCDMA/GSM/EDGE

- Global Positioning: GPS/GLONASS/BeiDou Wireless
- Network: 802.11a/b/g/n/ac, 2.4G+5G
- Bluetooth: 5.0 BR/EDR/BLE Power
- Input: 5V = 2A Temperature: -20°C~65°C

Compatible Cars and Mobile Phones

- Applicable models: The original car with wired CarPlay/Android Auto
- iPhone: Support iPhone 6 and above, for iOS 10 and above
- Android phone: Support Android 11.0 and above

Port Description

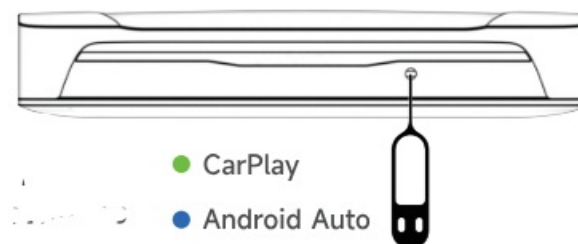
1. SIM card: support 4G full network, real-time traffic of Internet access
2. TF card: can be inserted into the maximum expansion space of 512GB TF(Micro SD) Card
3. USB port: can be inserted into the U disk, mouse and other devices
4. HDMI port: through the HDMI cable for connecting other HD displays, to realize the fun of sharing images

Connection Instruction

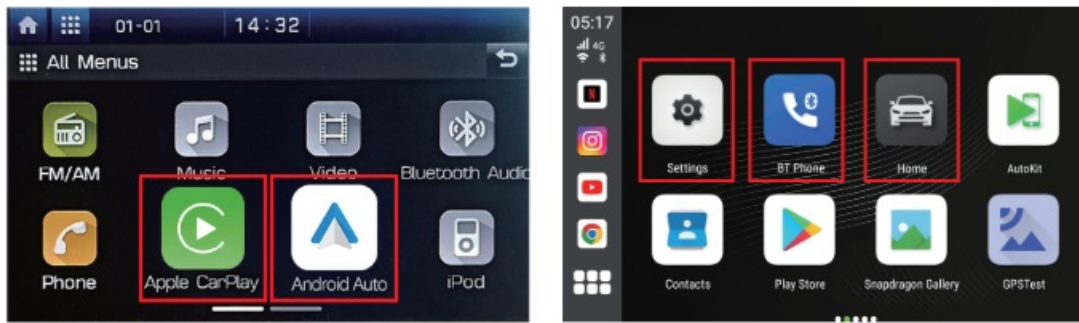
- In the original car system Interface (the specific Interface is subject to the actual car model), click “CarPlay” or “Android Auto” on the screen, then enter to product’s Android system interface



Switching operating modes: Insert the Ejection Pin and press for about 2-3s. Switch CarPlay (default) or Android Auto mode to work.

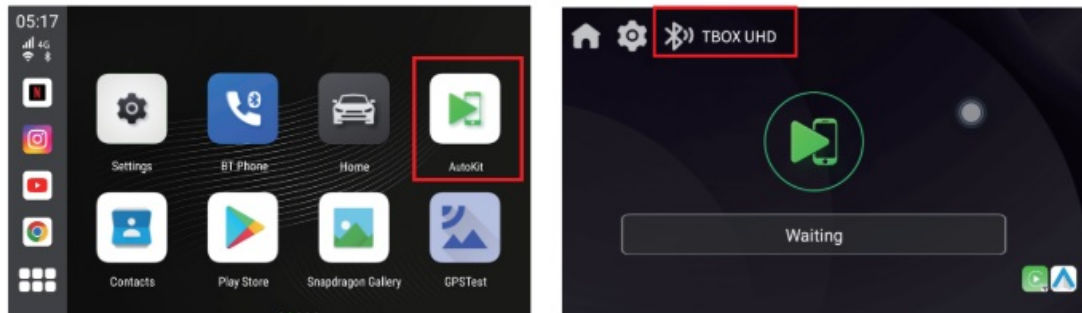


- Insert the SIM card, click the “phone” icon to add existing contacts, or click the “BT Phone” icon to pair with the mobile phone’s Bluetooth, and the mobile contacts can be synchronized to the car screen.
- Click the “Settings” icon to change languages, customize wallpapers, etc.
- Click the “Home” icon to return to the original car system.

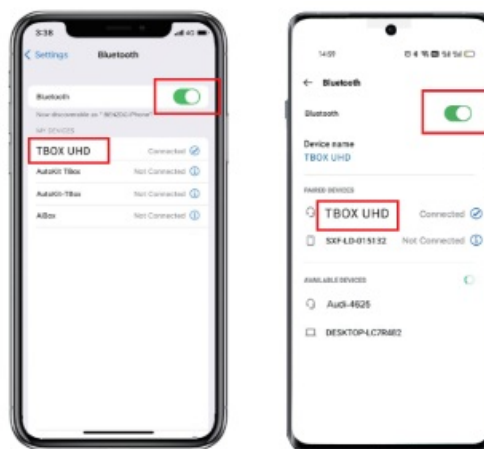


Wireless CarPlay/Android Auto Connection Instructions

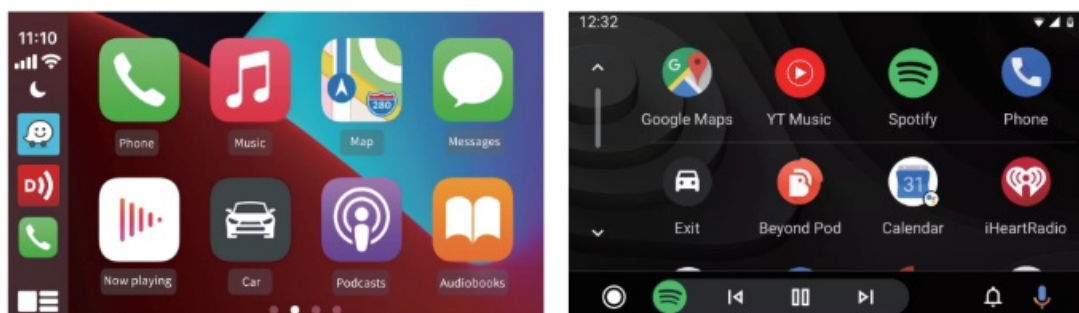
1. Click the "AutoKit" icon to enter the connection interface



2. Turn on the Bluetooth and WiFi of the iPhone/Android phone
3. Search the Bluetooth name displayed on the car screen in the Bluetooth list of the mobile phone, and click pairing

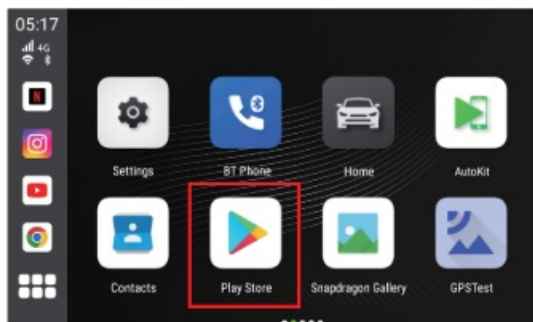


4. Wait for the connection to succeed, and the wireless CarPlay/Android Auto will work

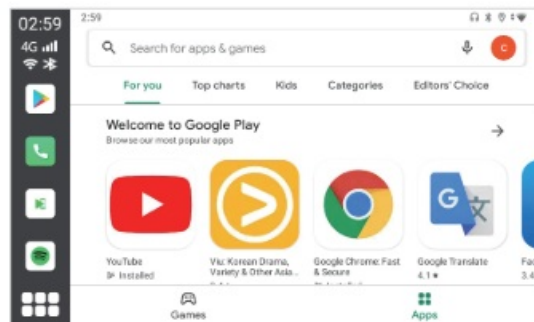


Download APPS

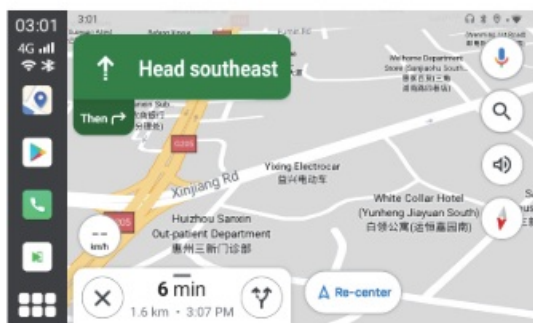
Click the "Play Store", then can download various apps. It supports third-party map navigation, online music, plenty of awesome HD videos and online games, which makes your driving life joyful.



The Main Interface



Play Store Interface



Online Map



HD Video

Detailed FAQ

1. Q: What should I do if the SIM card is not recognized when inserted?

1. A: 1. Confirm whether the card insertion method is correct (SIM Card inserted with metal side down, and the notch end is facing inward)
2. Do not insert or remove the SIM card when the product is turned on. The product must be turned off to remove and insert the SIM card.

2. Q: The Netflix display needs to be updated.

A: When it appears that it needs to be updated, please click the "Cancel" button (Don't update or delete the software preloaded on the product).

3. Q: The SIM card insertion is recognized, but the internet connection does not work.

1. A: 1. Settings – Network and Internet – APN, manually adjust it
2. Insert the SIM card into the Android phone and check the information parameters of the APN in the phone. Then in the product settings network and Internet – APN – right upper corner "+" sign, add APN parameters (add according to the parameters in the mobile phone)
3. If you need a video tutorial of the operation, please contact the store customer service directly.

After-Sales Service


Dear user, thank you for using this product. In order to protect your rights and interests, we will provide you with high-quality after-sales service. You can enjoy a one-year warranty service from the date of purchase (for failure caused by the quality issue of the product itself). Please keep this card properly, as the necessary proof of warranty service, the company reserves the right to interpret the after-sales.

| Warranty Card | | | |
|-------------------------|--|---------------|--|
| Name | | Purchase Date | |
| Phone Number | | E-Mail | |
| Address | | | |
| Dealer's Name (stamped) | | | |
| Warranty Content | | | |



<https://carlinkitcarplay.com/>

Documents / Resources

| | |
|---|--|
|  | Carlinkit HD2401-EC Full Android System [pdf] User Manual HD2401-EC Full Android System, HD2401-EC, Full Android System, Android System, System |
|---|--|

References

- [Carlinkit Wireless CarPlay Adapter - Make Your Wired CarPlay WIRELESS – Carlinkit Carplay Store](#)
- [User Manual](#)

[Manuals+](#), [Privacy Policy](#)

This website is an independent publication and is neither affiliated with nor endorsed by any of the trademark owners. The "Bluetooth®" word mark and logos are registered trademarks owned by Bluetooth SIG, Inc. The "Wi-Fi®" word mark and logos are registered trademarks owned by the Wi-Fi Alliance. Any use of these marks on this website does not imply any affiliation with or endorsement.