

**Contents** [ [hide](#) ]

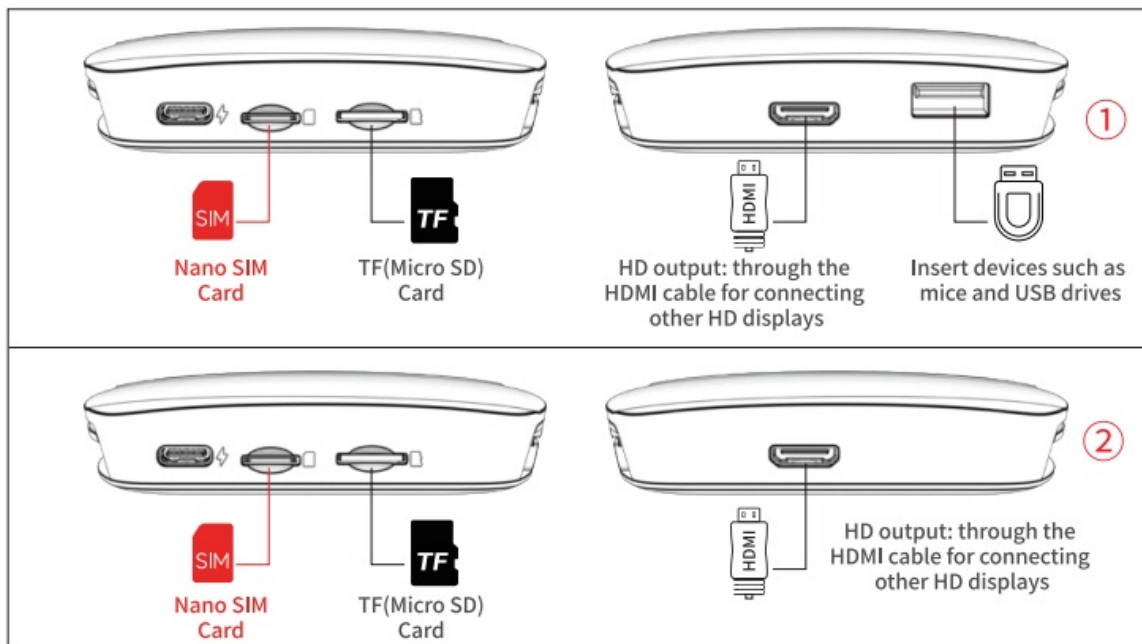
- [1 Carlinkit HD2401-03 Full Android System](#)
- [2 PORTS INFORMATION](#)
- [3 Function Introduction](#)
- [4 Product Specification](#)
- [5 Port Description](#)
- [6 Connection Instruction](#)
- [7 Download APPs](#)
- [8 FCC Warning](#)
- [9 Detailed FAQ](#)
- [10 Documents / Resources](#)
  - [10.1 References](#)



## Carlinkit HD2401-03 Full Android System



## PORTS INFORMATION



**Note:** Don't insert the SIM/TF card backward, the wrong way will damage the products card slot

## Function Introduction

The product expands the open Android system platform through the car USB interface, supports the installation of applications at any time, and realizes more audio-visual entertainment and navigation functions.

Besides, it also supports 4G/GPS/Bluetooth/Phone/Mobile Connectivity enables wireless CarPlay and wireless Android Auto. By connecting to other displays through the HDMI port, high-definition image output can be achieved, and the screen can be split and switched to display without interfering with each other and affecting driving, thus achieving the fun of sharing high-definition images.

## Product Specification

- **Operating System:** Android system
- **Operator Version:** NA(North America)/EAU(Europe, Asia)/JP(Japan)
- **Communication Standard:** LTD-FDD/LTE-TDD/WCDMA/GSM/EDGE
- **Global Positioning:** GPS/GLONASS/BeiDou
- **Wireless Network:** 802.11a/b/g/n/ac, 2.4G+5G
- **Bluetooth:** 5.0 BR/EDR/BLE

- **Power Input:** 5V  2A
- **Temperature:** -20°C-65°C

## Compatible Cars and Mobile Phones

- **Applicable models:** The original car with wired CarPlay/Android Auto
- **iPhone:** Support iPhone 6 and above, for iOS 10 and above
- **Android phone:** Support Android 11.0 and above

## Port Description

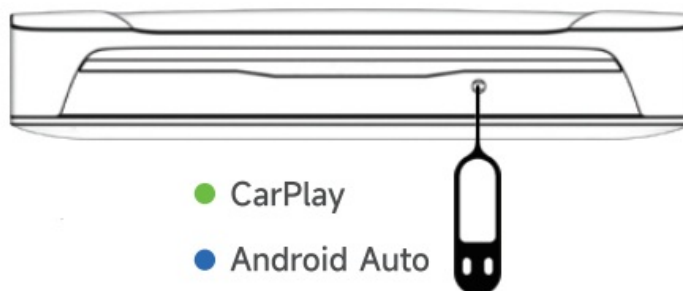
1. **SIM card:** support 4G full network, real-time traffic of Internet access
2. **TF card:** can be inserted into the maximum expansion space of 512GB TF(Micro SD) Card 1)
3. **USB port:** can be inserted into the U disk, mouse and other devices
3. **HDMI port:** through the HDMI cable for connecting other HD displays, to realize the fun of sharing images

## Connection Instruction

- In original car system interface (the specific interface is subject to the actual car model), click “CarPlay” “Android Auto” on the screen, then enter to product’s Android system interface.

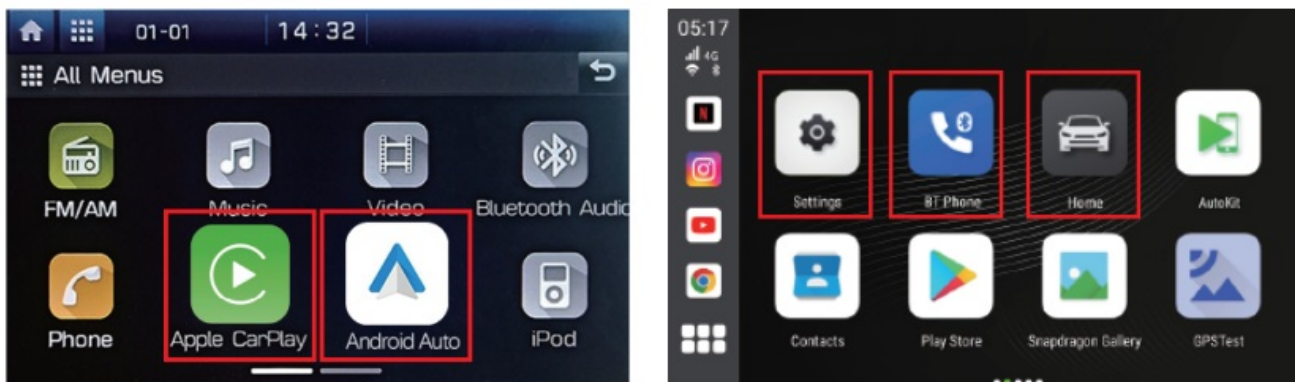


Switching operating modes: Insert the Ejection Pin and press for about 2-3s. Switch CarPlay (default) or Android Auto mode to work.



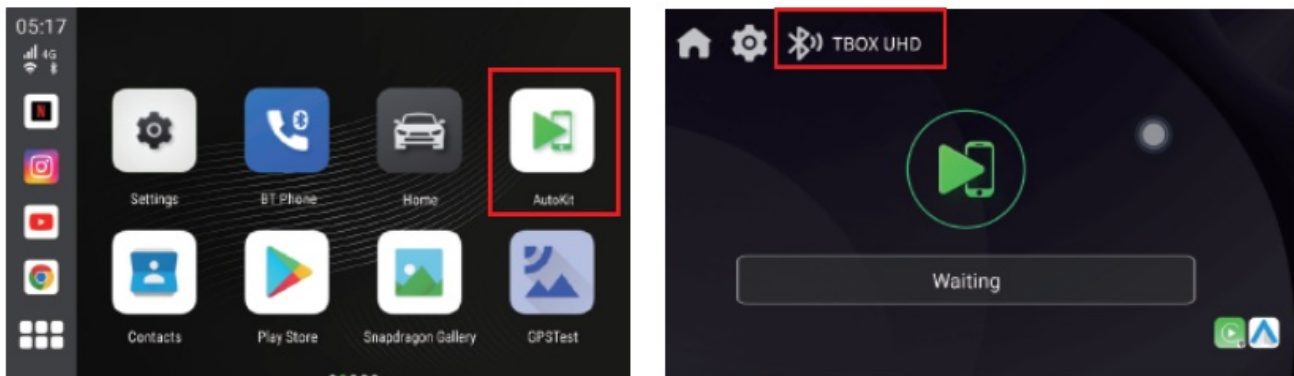
- Insert the SIM card, click the “phone” icon to add existing contacts, or click the “BT Phone” icon to pair with the mobile phone’s Bluetooth, and the mobile contacts can be synchronized to the car screen.
- Click the “Settings” icon to change languages, customize wallpapers, etc.

- Click the “Home” icon to return to the original car system.

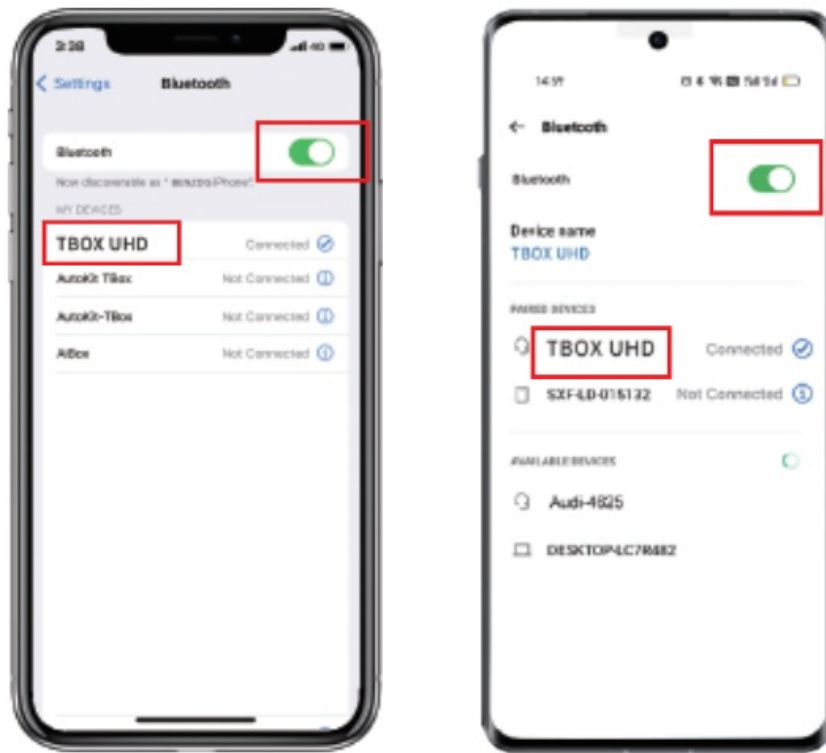


## Wireless CarPlay/Android Auto Connection Instructions

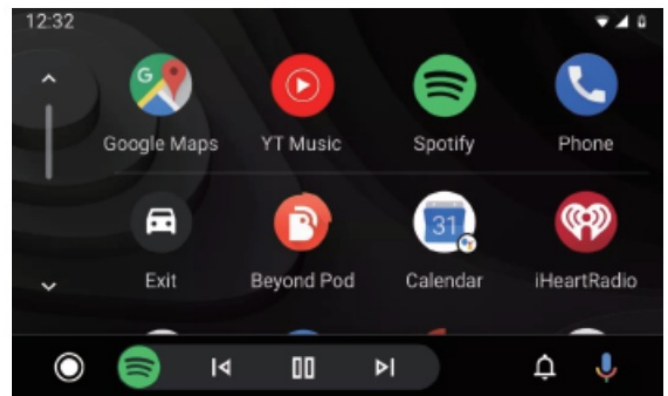
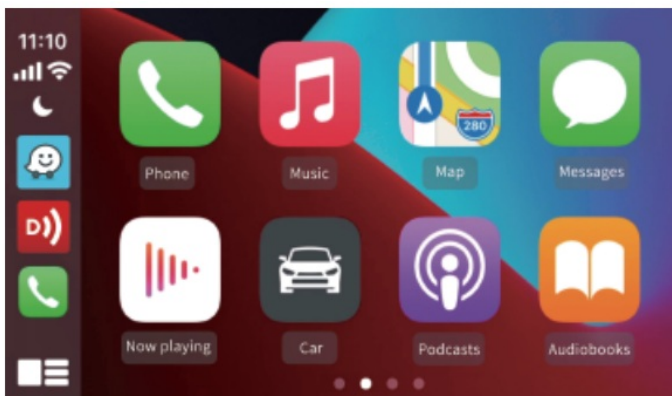
1. Click the “AutoKit” icon to enter the connection interface



2. Turn on the Bluetooth and WiFi of the iPhone/Android phone
3. Search the bluetooth name displayed on the car screen in the Bluetooth list of the mobile phone, and click pairing.

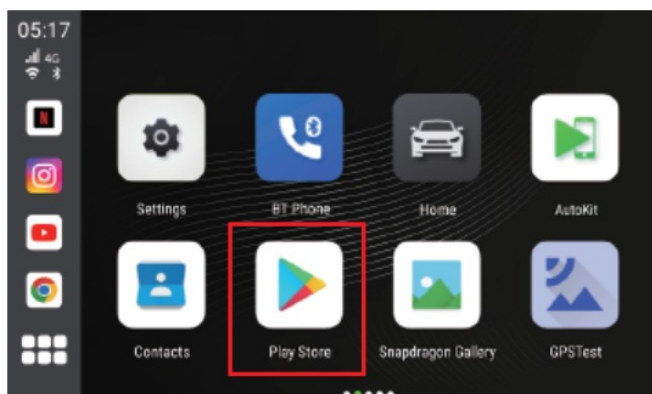


4. Wait for the connection to succeed, and the wireless CarPlay/Android Auto will work

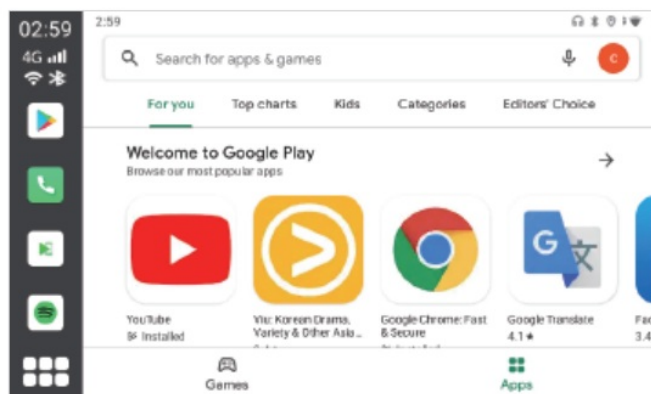


## Download APPs

Click the “Play Store”, then can download various apps. It supports third-party map navigation, online music, plenty of awesome HD videos and online games, which makes your driving life joyful.



The Main Interface



Play Store Interface



Online Map



HD Video

## After-Sales Service

Dear user, thank you for using this product. In order to protect your rights and interests, we will provide you with high-quality after-sales service. You can enjoy one-year warranty service from the date of purchase (for failure caused by the quality issue of the product itself). Please keep this card properly, as the necessary proof of warranty service, the company reserves the right to interpret the after-sales.

Warranty Card			
Name			Purchase Date
Phone Number			E-Mail
Address			
Dealer's Name (stamped)			
Warranty Content			





## FCC Warning

This device complies with part 15 of the FCC Rules. Operation is subject to the following two conditions:

1. This device may not cause harmful interference, and
2. this device must accept any interference received, including interference that may cause undesired operation.

Any Changes or modifications not expressly approved by the party responsible for compliance could void the user's authority to operate the equipment.

**Note:** This equipment has been tested and found to comply with the limits for a Class B digital device, pursuant to part 15 of the FCC Rules. These limits are designed to provide reasonable protection against harmful interference in a residential installation. This equipment generates uses and can radiate radio frequency energy and, if not installed and used in accordance with the instructions, may cause harmful interference to radio communications. However, there is no guarantee that interference will not occur in a particular installation. If this equipment does cause harmful interference to radio or television reception, which can be determined by turning the equipment off and on, the user is encouraged to try to correct the interference by one or more of the following measures:

- Reorient or relocate the receiving antenna.
- Increase the separation between the equipment and receiver.
- Connect the equipment into an outlet on a circuit different from that to which the receiver is connected.
- Consult the dealer or an experienced radio/TV technician for help.

This equipment complies with FCC radiation exposure limits set forth for an uncontrolled

environment. This equipment should be installed and operated with minimum distance 20cm between the radiator & your body.

## Detailed FAQ

**Q: What should I do if the SIM card is not recognized when inserted?**

**A:**

1. Confirm whether the card insertion method is correct (SIM Card inserted with metal side down, and the notch end is facing inward)
2. Do not insert or remove the SIM card when the product is turned on. The product must be turned off to remove and insert the SIM card.

**Q: The Netflix display needs to be updated.**


**A:** When it appears that it needs to be updated, please click the “Cancel” button (Don’t update or delete the software preloaded on the product).

**Q: The SIM card insertion is recognized, but the internet connection does not work.**

**A:**

1. Settings – Network and Internet – APN, manually adjust it
2. Insert the SIM card into the Android phone and check the information parameters of the APN in the phone. Then in the product settings network and Internet – APN – right upper corner”+” sign, add APN parameters (add according to the parameters in the mobile phone)
3. If you need a video tutorial of the operation, please contact the store customer service directly.

## Documents / Resources

	<a href="#">Carlinkit HD2401-03 Full Android System [pdf]</a> User Manual 2BKBF-HDMI, 2BKBFHDMI, HD2401-03 Full Android System, HD2401-03, Full Android System, Android System
---	---



## References

- [User Manual](#)

📁 Carlinkit

🔖 2BKBF-HDMI, 2BKBFHDMI, Android System, Carlinkit, Full Android System, HD2401-03, HD2401-03 Full Android System

—Previous Post

**[M2406-1 Mini SE Carlinkit Mini SE Wireless CarPlay Adapter Instruction Manual](#)**

---

## Leave a comment

Your email address will not be published. Required fields are marked \*

Comment \*

Name

Email

Website

☐ Save my name, email, and website in this browser for the next time I comment.

**Post Comment**

**Search:**

e.g. whirlpool wrf535swhz

Search

[Manuals+](#) | [Upload](#) | [Deep Search](#) | [Privacy Policy](#) | [@manuals.plus](#) | [YouTube](#)

This website is an independent publication and is neither affiliated with nor endorsed by any of the trademark owners. The "Bluetooth®" word mark and logos are registered trademarks owned by Bluetooth SIG, Inc. The "Wi-Fi®" word mark and logos are registered trademarks owned by the Wi-Fi Alliance. Any use of these marks on this website does not imply any affiliation with or endorsement.