



[Home](#) » [Carel](#) » **CAREL +0500186ML, +0300185ML Boss Micro Panel Instruction Manual**



CAREL

+0500186ML – rel. 1.0 – 12.02.2025

BOSS-MICRO PANEL

MECHANICAL INSTALLATION



<https://l.ead.me/bfDzQb>

→ **READ AND SAVE THESE INSTRUCTIONS** ←

Contents [[hide](#)]

[1 WALL MOUNTING](#)

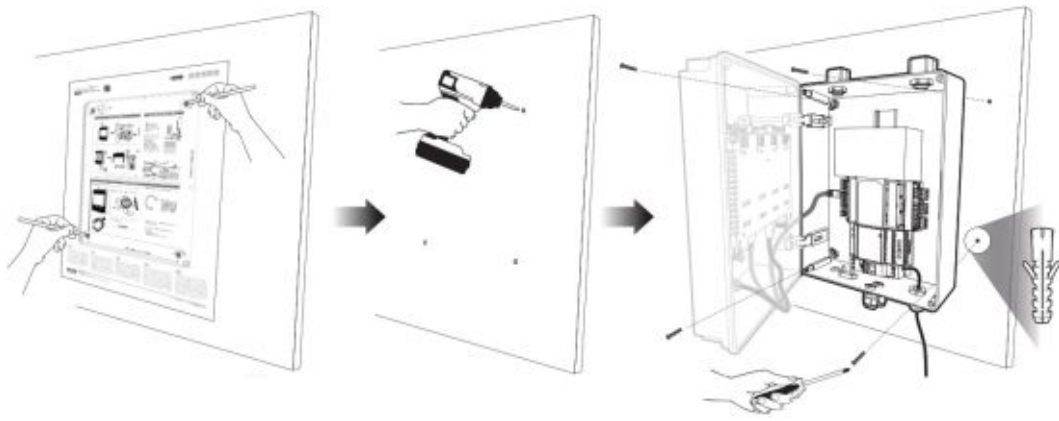
[2 PACKAGE CONTENT](#)

[3 WIFI AND 4G MODELS ONLY *](#)

[4 Documents / Resources](#)

[4.1 References](#)

WALL MOUNTING



More details on +0300185ML Boss Micro Panel start guide

PACKAGE CONTENT



More details on +0300185ML Boss Micro Panel start guide

Assembly procedure included in the package: +0500152IE μ boss; +0500169ML General Warning

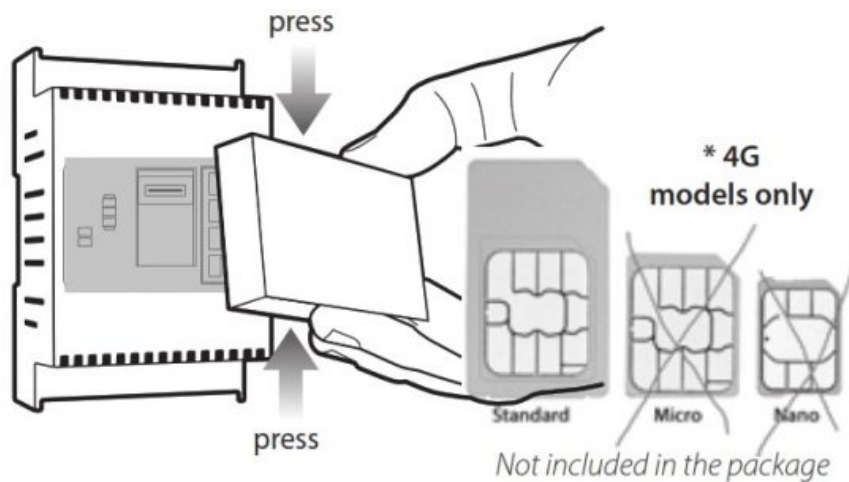


*WiFi models only (already mounted)



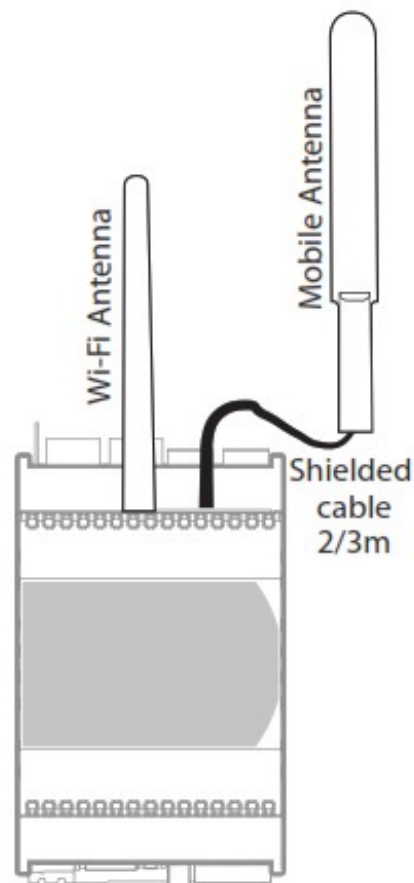
*4G models only

WIFI AND 4G MODELS ONLY *



Attentions: do not invert the antennas Wi-Fi with 2G/3G/4G.

If using models with both Wi-Fi and 4G modules, it is necessary to remotely control the 4G antenna to avoid interference with Wi-Fi (see figure).



The technical documentation supplied with the product can be downloaded, even before purchase, from the website www.carel.com, referring to the part number shown on the label. For the technical specifications listed in this leaflet, always refer to the technical code always shown on the label.

CAREL

CAREL INDUSTRIES SpA

Via dell'Industria, 11 – -35020 Brugine – Padova (Italy)

Tel. (+39) 0499716611

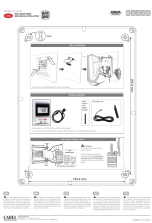
Fax (+39) 0499716600

e-mail: carel@carel.com

www.carel.com

+0500186ML – rel. 1.0 – 12.02.2025

Documents / Resources



[CAREL +0500186ML, +0300185ML Boss Micro Panel \[pdf\]](#) Instruction Manual

0500186ML, 0300185ML, 0500186ML 0300185ML Boss Micro Panel, 0500186ML 0300185ML, Boss Micro Panel, Micro Panel, Panel

References

- [CAREL](#)
- [CAREL](#)
- [User Manual](#)

📁 Carel

🔍 0300185ML, 0500186ML, 0500186ML 0300185ML, 0500186ML 0300185ML Boss Micro Panel, Boss Micro Panel, Carel, Micro Panel, Panel

—Previous Post

[CAREL DCPD0 100 Pressostato Differenziale Aria User Guide](#)

Leave a comment

Your email address will not be published. Required fields are marked *

Comment *

Name

Email

Website

☐ Save my name, email, and website in this browser for the next time I comment.

Post Comment

[Manuals+](#), [Privacy Policy](#) | [@manuals.plus](#) | [YouTube](#)

This website is an independent publication and is neither affiliated with nor endorsed by any of the trademark owners. The "Bluetooth®" word mark and logos are registered trademarks owned by Bluetooth SIG, Inc. The "Wi-Fi®" word mark and logos are registered trademarks owned by the Wi-Fi Alliance. Any use of these marks on this website does not imply any affiliation with or endorsement.