

care ai PSK0203 Ambient Monitoring Sensor



care ai PSK0203 Ambient Monitoring Sensor User Manual

[Home](#) » [care ai](#) » care ai PSK0203 Ambient Monitoring Sensor User Manual 

Contents

- 1 [care ai PSK0203 Ambient Monitoring Sensor](#)
- 2 [Product Usage Instructions](#)
- 3 [FAQ](#)
- 4 [Product Description](#)
- 5 [Overview](#)
- 6 [Connections](#)
- 7 [FCC STATEMENT](#)
- 8 [Documents / Resources](#)
 - 8.1 [References](#)



care ai PSK0203 Ambient Monitoring Sensor



Product Usage Instructions

Power On and Camera Activation:

1. Connect the power supply to the device.
2. The camera will automatically turn on and start video recording based on your actions.

Light Adjustment:

1. The device has 18 LED beads that illuminate in dark environments.
2. The light sensor adjusts the lens brightness according to the surrounding light conditions.

Functionality Overview

1. Use the LAN port for network connectivity.
2. The reset button can be used for resetting the device.
3. The USB interface allows for connecting external peripherals like a mouse or keyboard.
4. HDMI ports enable input and output of video data.
5. The IR transmitter sends relevant signals.

Power Management

1. Use the ON/OFF interface for powering on and shutting down the device, while DC maintains power supply.
2. Connect the DC interface to power the machine.

FAQ

Frequently Asked Questions

- **What is the purpose of the Type-C interface?**

- The Type-C interface is used for manufacturers and engineers to upgrade the device firmware and is not intended for consumer use.

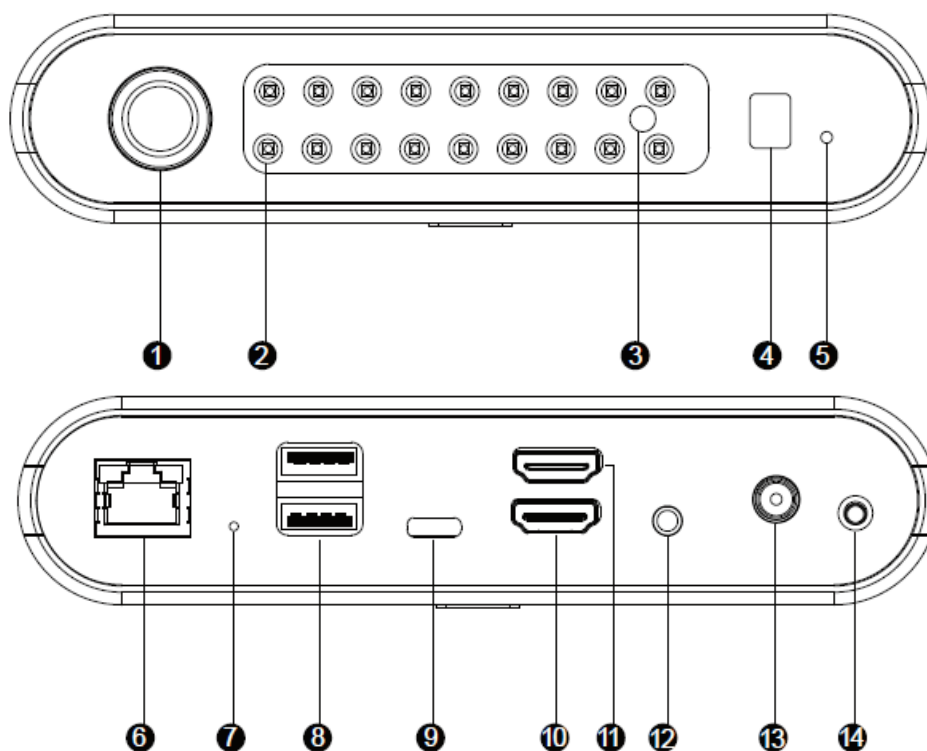
- **How can I reset the device?**

- To reset the device, use a long needle object to press and hold the reset button for more than 5 seconds.

- **How do I know the status of the device based on the indicator light?**

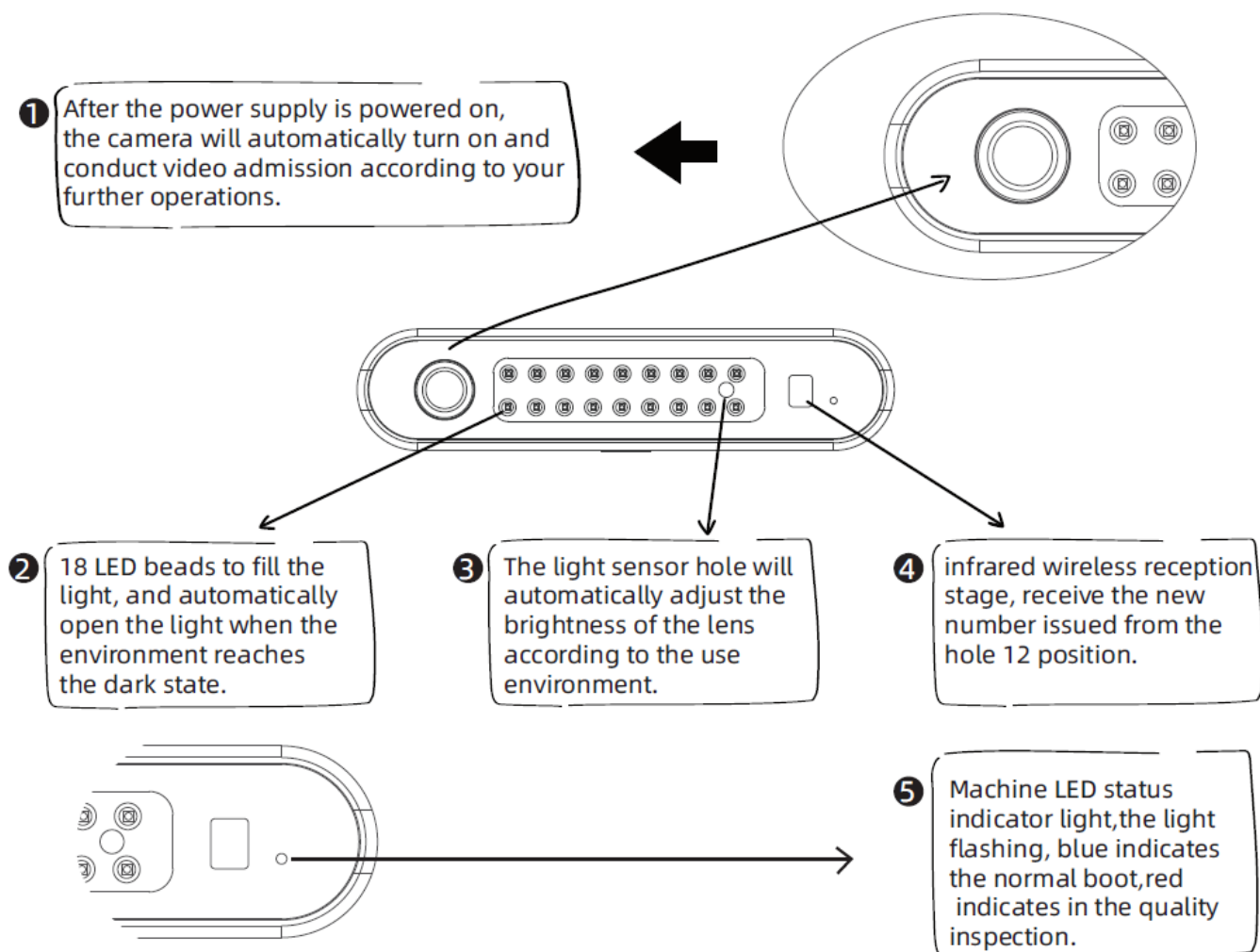
- The LED indicator light flashes blue during normal boot-up and red during quality inspection.

Product Description

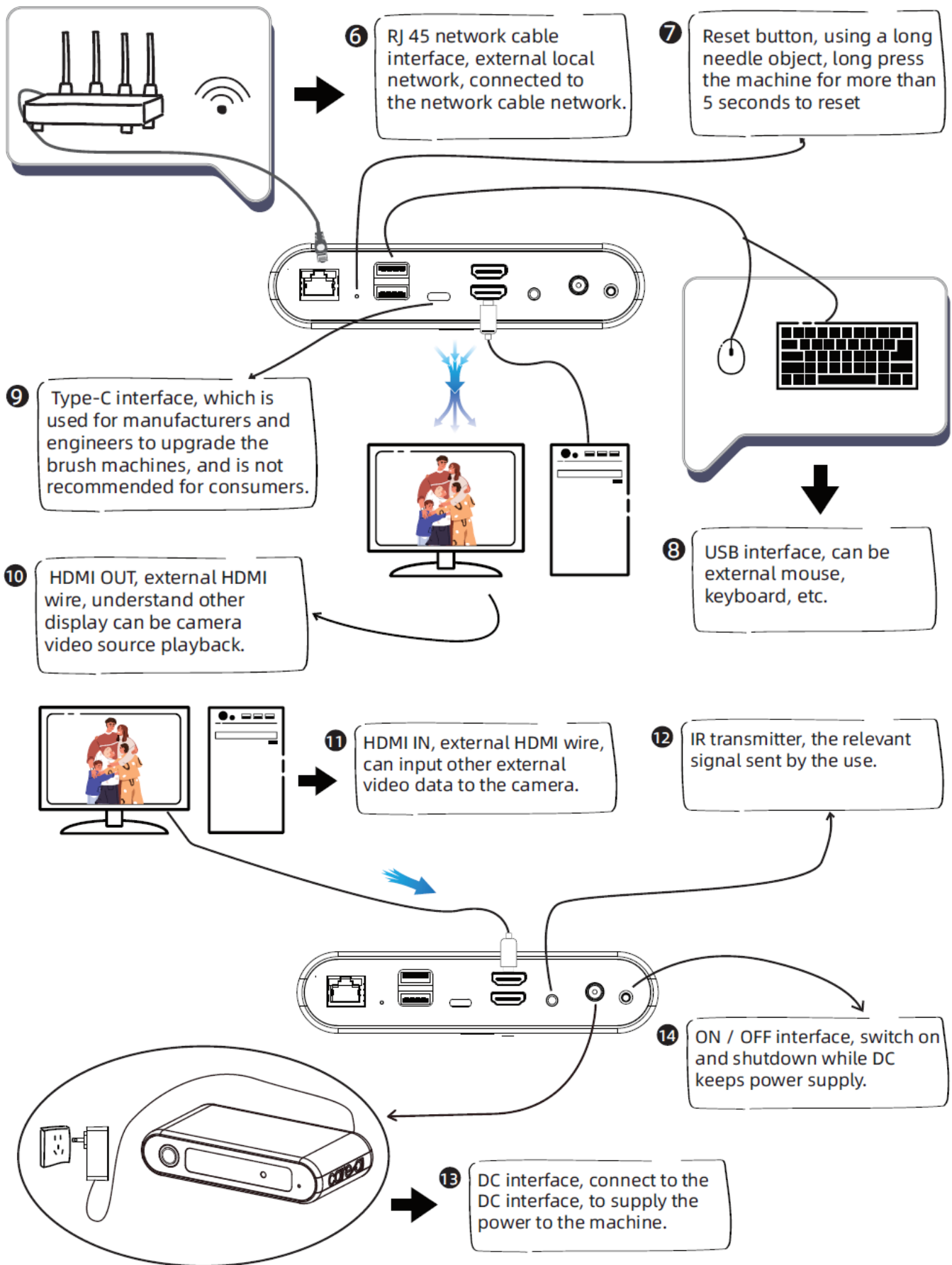


1. Camera
2. LED
3. Light Sensor
4. IR Receiver
5. Indicator
6. LAN
7. RST
8. USB
9. TYPE-C
10. HDMI OUT
11. HDMI IN
12. IR
13. DC IN

Overview



Connections



FCC STATEMENT

This device complies with part 15 of the FCC rules. Operation is subject to the following two conditions:

1. this device may not cause harmful interference

2. this device must accept any interference received, including interference that may cause undesired operation.

Changes or modifications not expressly approved by the party responsible for compliance could void the user's authority to operate the equipment.


NOTE: This equipment has been tested and found to comply with the limits for a Class B digital device, pursuant to part 15 of the FCC Rules. These limits are designed to provide reasonable protection against harmful interference in a residential installation. This equipment generates uses and can radiate radio frequency energy and, if not installed and used in accordance with the instructions, may cause harmful interference to radio communications. However, there is no guarantee that interference will not occur in a particular installation. If this equipment does cause harmful interferenceto radio or television reception, which can be determined by turning the equipment off and on, the user is encouraged to try to correct the interference by one or more of the following measures:

- Reorient or relocate the receiving antenna.
- Increase the separation between the equipment and receiver.
- Connect the equipment into an outlet on a circuit different from that to which the receiver is connected.
- Consult the dealer or an experienced radio/TV technician for help.

Radiation Exposure Statement

- This equipment complies with FCC radiation exposure limits set forth for an uncontrolled environment.
- This equipment should be installed and operated with minimum distance 20cm between the radiator and your body.

Documents / Resources

	care ai PSK0203 Ambient Monitoring Sensor [pdf] User Manual AMS-R2-U, 2A8DC-AMS-R2-U, 2A8DCAMSR2U, PSK0203 Ambient Monitoring Sensor, PSK0203, PSK0203 Monitoring Sensor, Ambient Monitoring Sensor, Monitoring Sensor, Ambie nt Sensor, Sensor
---	--

References

- [User Manual](#)

Manuals+ Privacy Policy

This website is an independent publication and is neither affiliated with nor endorsed by any of the trademark owners. The "Bluetooth®" word mark and logos are registered trademarks owned by Bluetooth SIG, Inc. The "Wi-Fi®" word mark and logos are registered trademarks owned by the Wi-Fi Alliance. Any use of these marks on this website does not imply any affiliation with or endorsement.