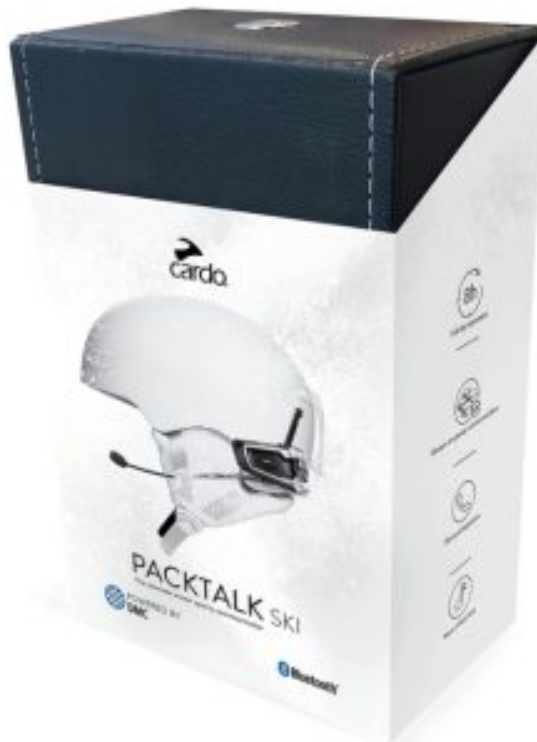




cardo PACKTALK SKI Snowboard and Ski Helmet Speaker and Intercom Sound Installation Guide

[Home](#) » [cardo](#) » cardo PACKTALK SKI Snowboard and Ski Helmet Speaker and Intercom Sound Installation Guide 

cardo PACKTALK SKI Snowboard and Ski Helmet Speaker and Intercom Sound Installation Guide



Contents

1 CONTENTS

2 MOUNTING WITH A GLUE PLATE

3 MOUNTING WITH A CLAMP

4 POSITION THE MICROPHONE

5 PLACING THE SPEAKERS A

6 PLACING THE SPEAKERS B

7 INSERTING THE UNIT

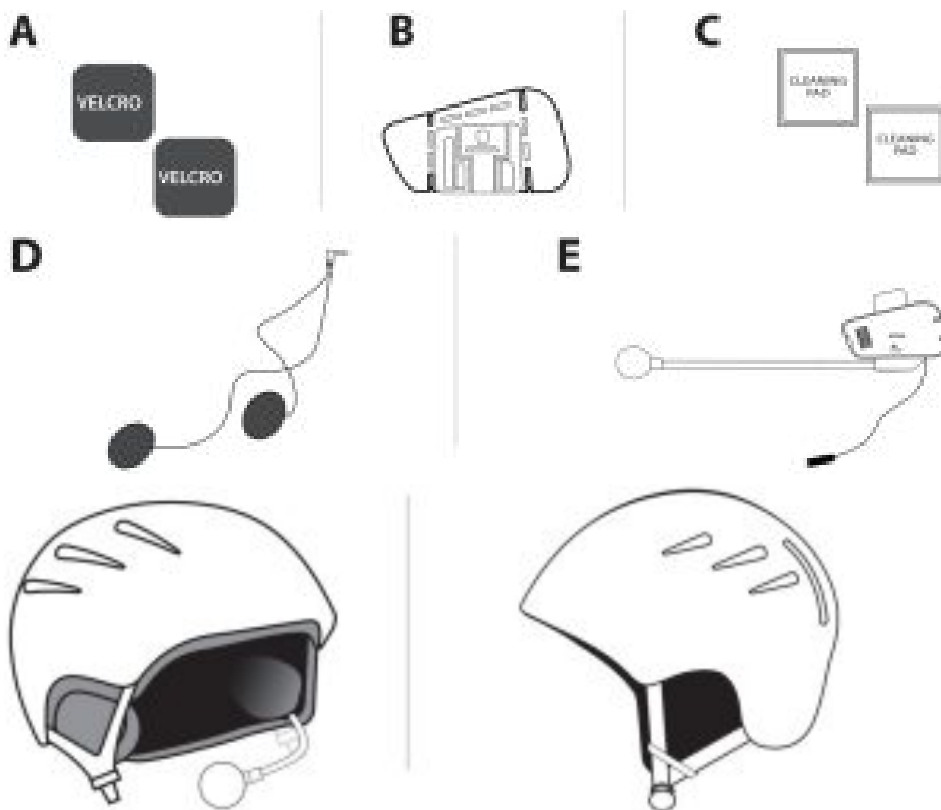
8 REMOVING THE UNIT

9 REMOVING THE GLUE

10 Documents / Resources

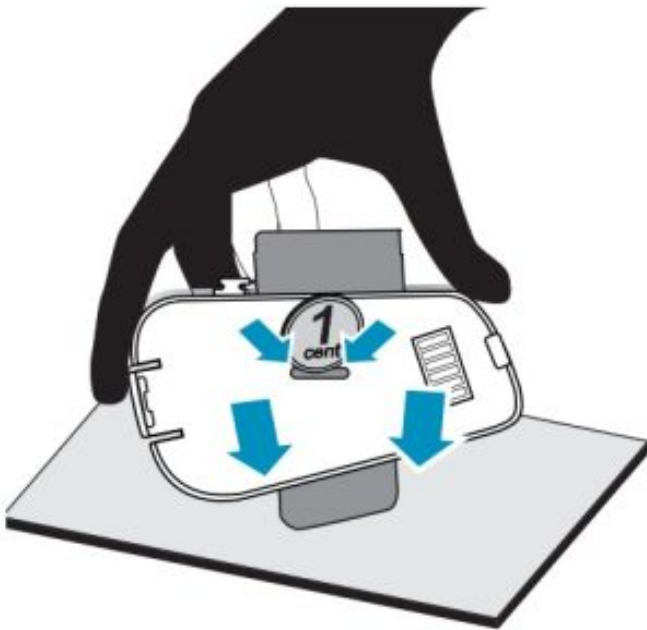
11 Related Posts

CONTENTS

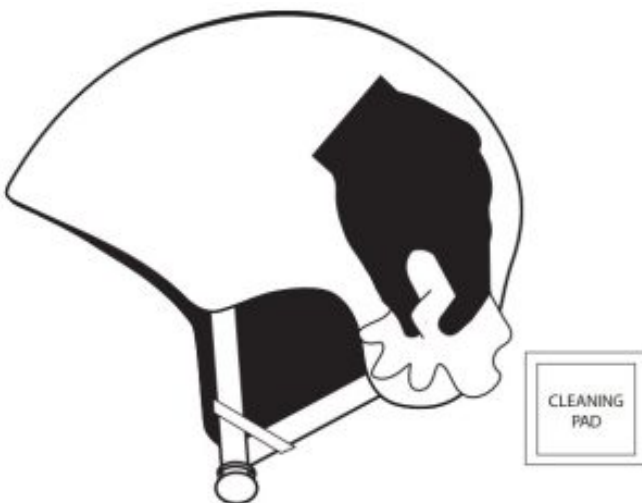


MOUNTING WITH A GLUE PLATE

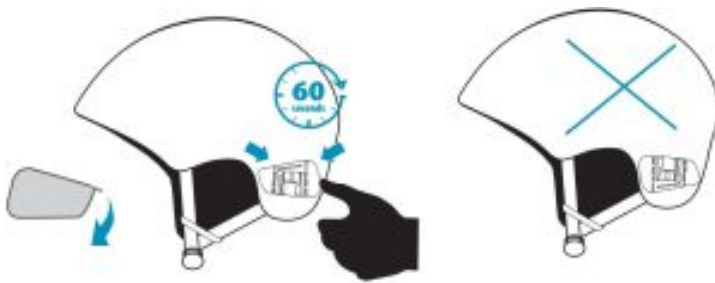
1. Press small coin into opening of cradle, release clip



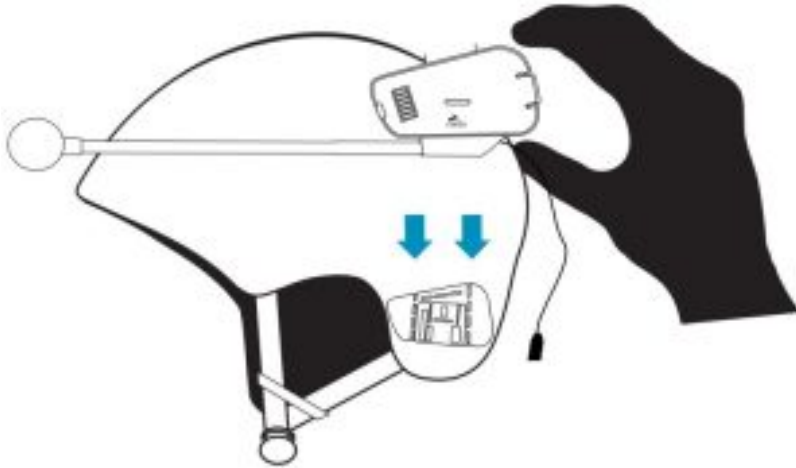
- 2.
3. Clean the area with the alcohol pad



4. Press for 60 seconds

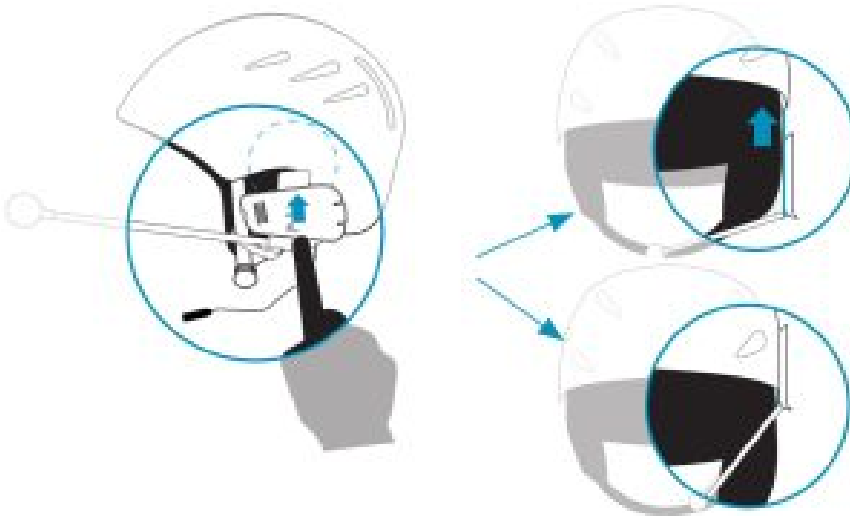


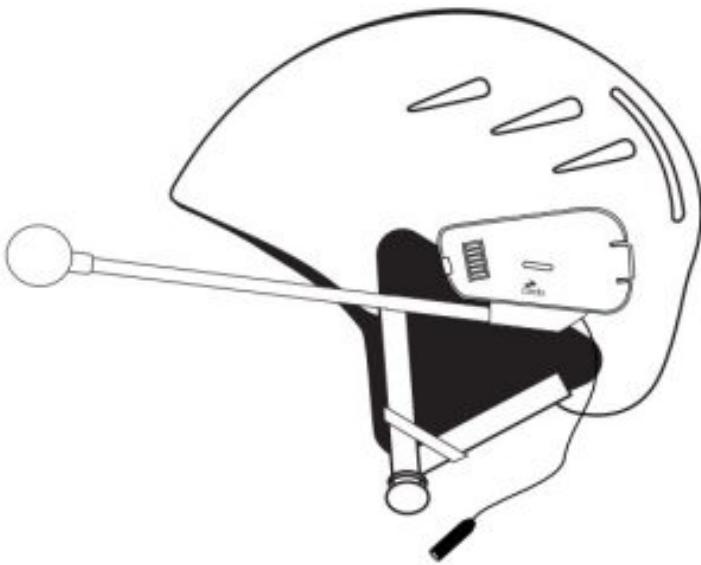
5. Slide the back plate into position on the glue plate



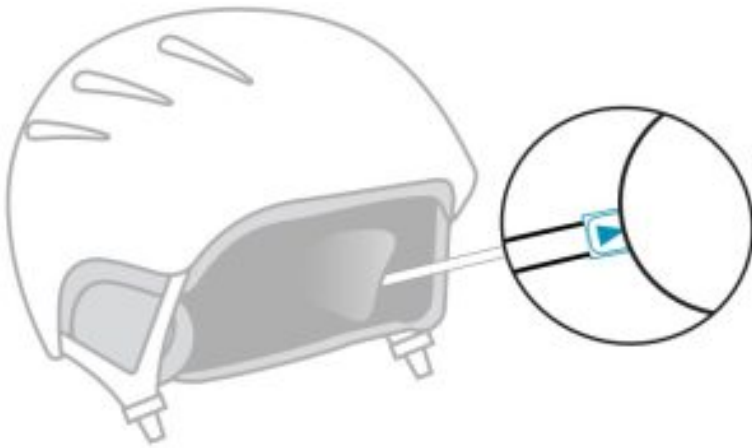
MOUNTING WITH A CLAMP

- Push the metal clip between the helmet's outer shell and inner padding

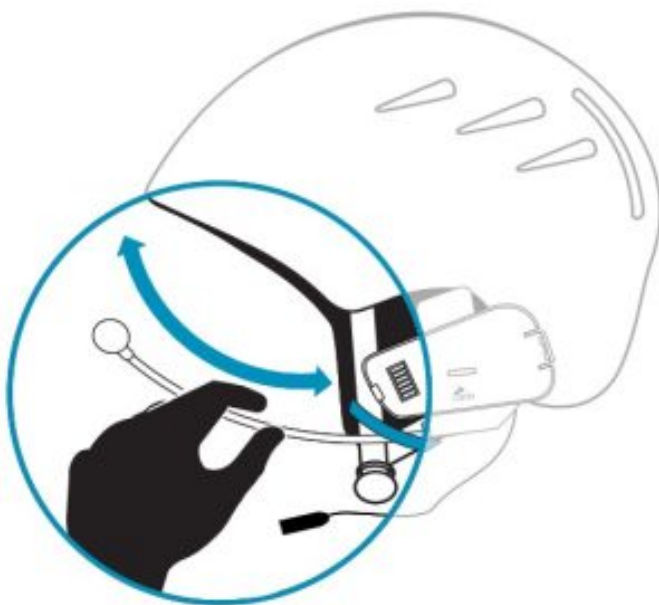




POSITION THE MICROPHONE

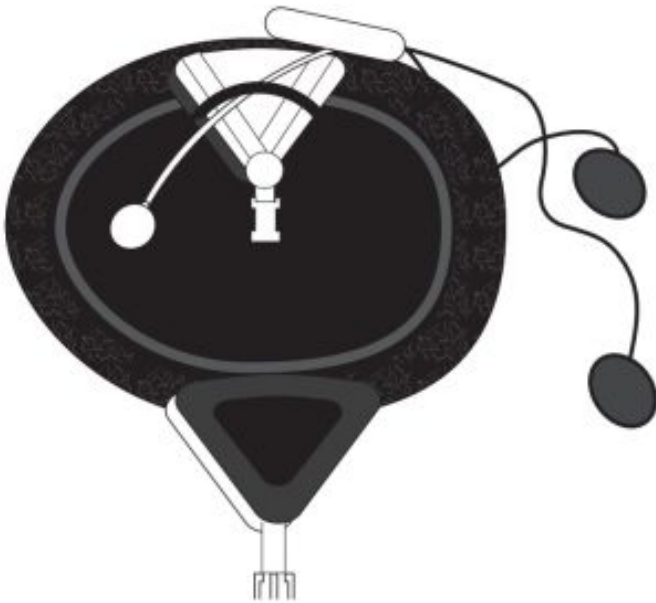
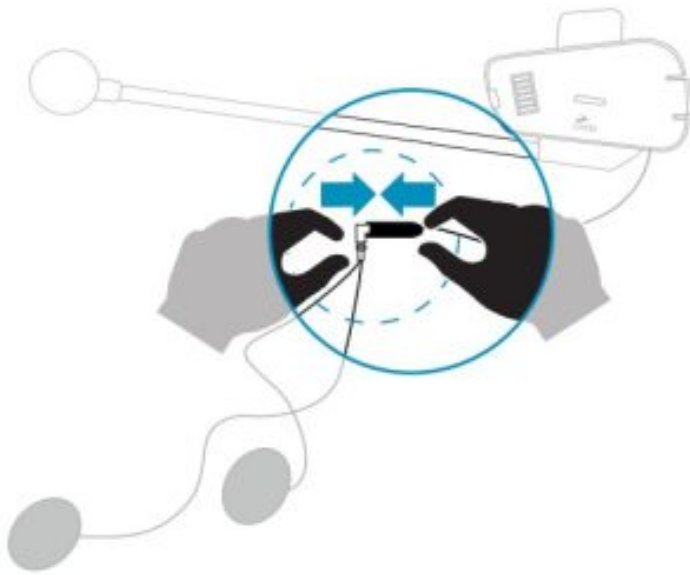


Bend the microphone



PLACING THE SPEAKERS A

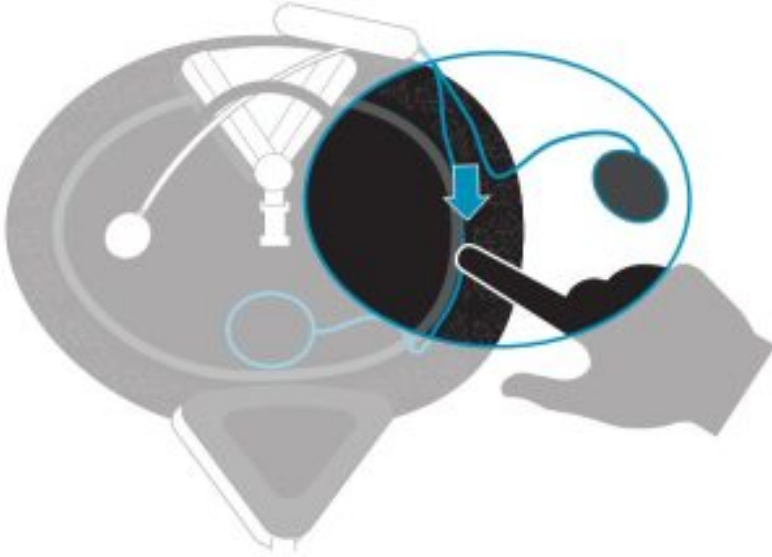
Plug in the speakers



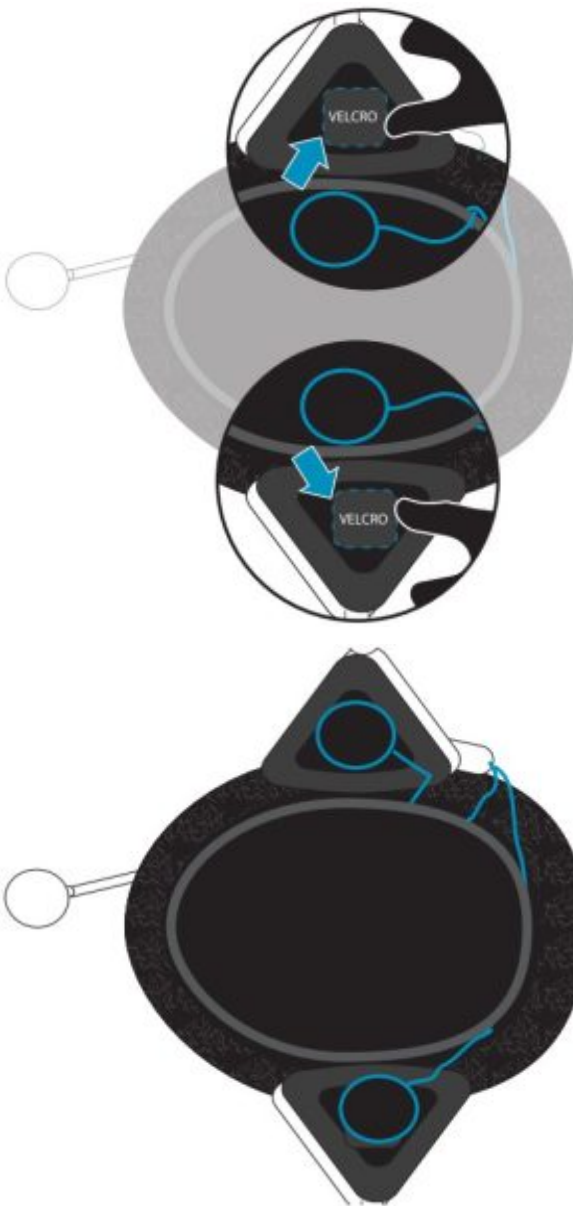
- 1.
2. Push back the inner padding



3. Push the speakers through the inner padding



4. Attach the Velcro Pads to the helmet's inner padding

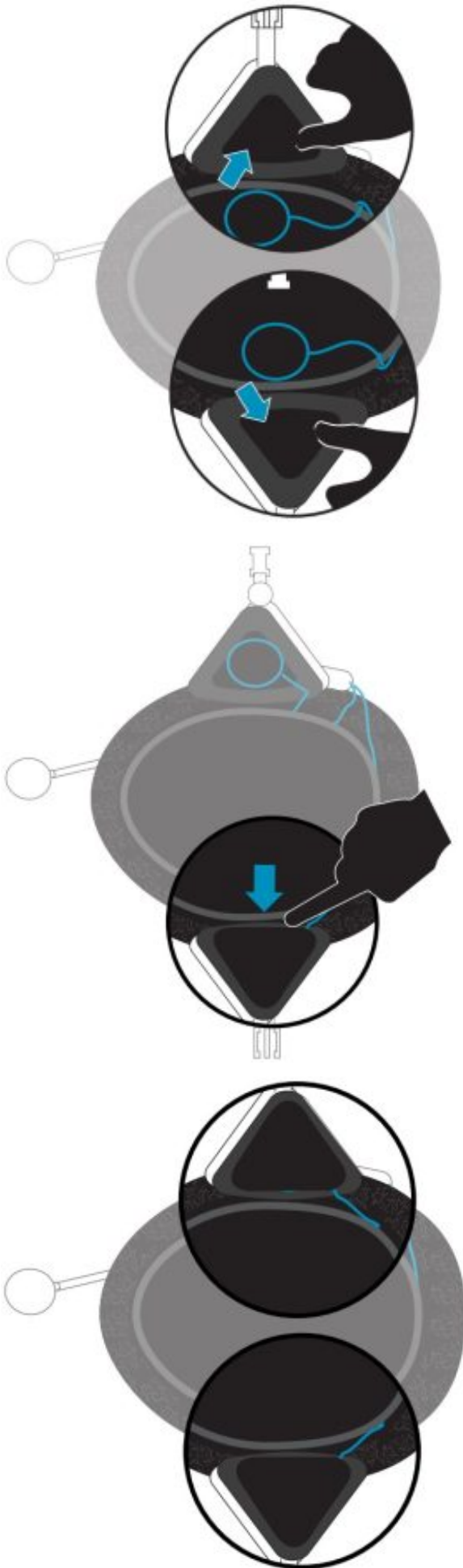


5.

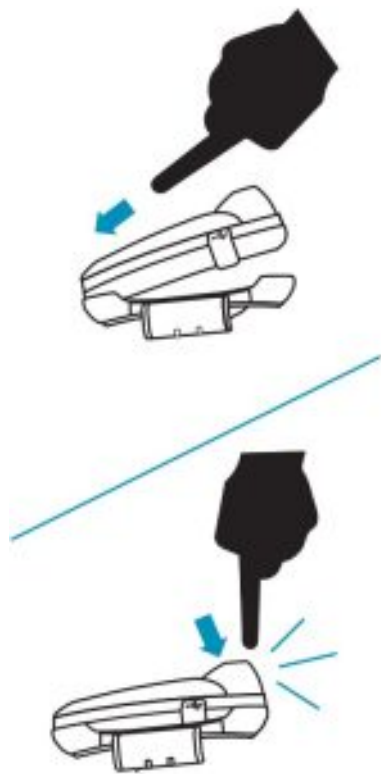
PLACING THE SPEAKERS B

- Place the speakers inside the inner padding

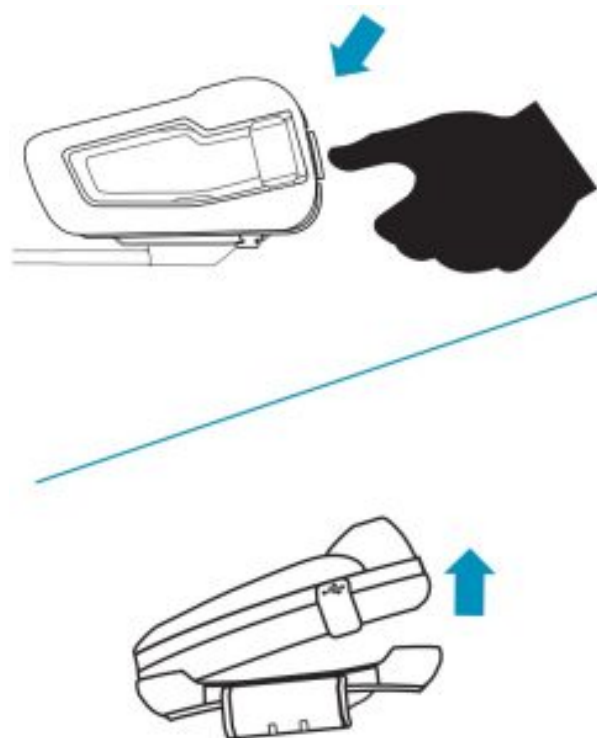
- Push back the inner padding



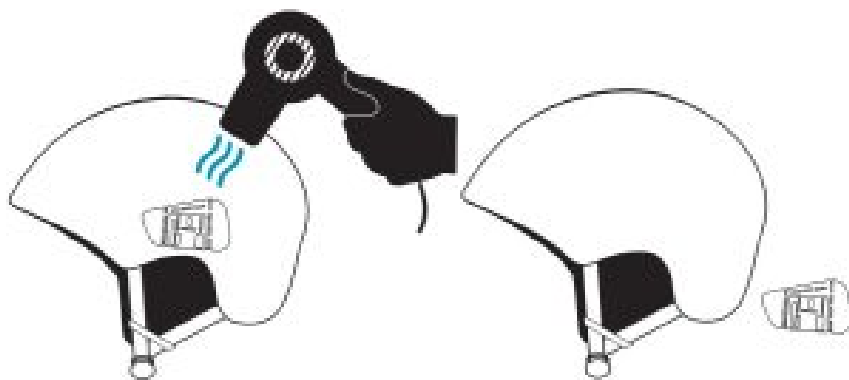
INSERTING THE UNIT




REMOVING THE UNIT



REMOVING THE GLUE



Documents / Resources

	<p>cardo PACKTALK SKI Snowboard and Ski Helmet Speaker and Intercom Sound [pdf] Installation Guide</p> <p>PACKTALK SKI, Snowboard and Ski Helmet Speaker and Intercom Sound</p>
---	---

Manuals+.