

cardo PACKTALK PRO Built In Crash Detection Sensor



cardo PACKTALK PRO Built In Crash Detection Sensor User Guide

[Home](#) » [cardo](#) » cardo PACKTALK PRO Built In Crash Detection Sensor User Guide 

Contents

- 1 [cardo PACKTALK PRO Built In Crash Detection Sensor](#)
- 2 [Product Information](#)
- 3 [Product Usage Instructions](#)
- 4 [Frequently Asked Questions](#)
- 5 [Getting Started](#)
- 6 [Cardo Connect App](#)
- 7 [General](#)
- 8 [Radio](#)
- 9 [Music](#)
- 10 [Switch Source](#)
- 11 [Phone Call](#)
- 12 [DMC Intercom](#)
- 13 [Switch Source](#)
- 14 [ADVANCED FEATURES](#)
- 15 [Measurements](#)
- 16 [TYPE APPROVAL](#)
- 17 [Documents / Resources](#)
 - 17.1 [References](#)
- 18 [Related Posts](#)



cardo PACKTALK PRO Built In Crash Detection Sensor



Product Information

Specifications

- Product Name: Cardo Pocket Guide PRO
- Speaker Size: 45mm
- Language Options: Multiple languages available
- Dimensions: Open – 180mm x 180mm, Closed – 90mm x 180mm
- Material: Glossy art paper
- Printing Process: CMYK

Product Usage Instructions

Getting Started

To turn the device on or off, press and hold the control wheel for 2 seconds. The LED indicator will show the status.

Cardo Connect App

Download the Cardo Connect App, register, and activate your device. Use the app to customize settings and update software.

General Controls

Adjust volume using the volume up/down buttons, mute/unmute the microphone, and access voice assistants like Siri or Google Assistant with a single tap.

Radio

Set radio presets, start/stop scan, and switch between radio and music sources with the designated controls.

Frequently Asked Questions

Q: How do I pair my phone with the device?

A: To pair your phone, press and hold the phone pairing button for 5 seconds until the LED flashes red and blue. Then, follow the on-screen instructions on your phone to complete the pairing process.

Q: How can I reset the device to factory settings?

A: To perform a factory reset, press and hold the reboot button for 10 seconds. The device will reset to its original settings.

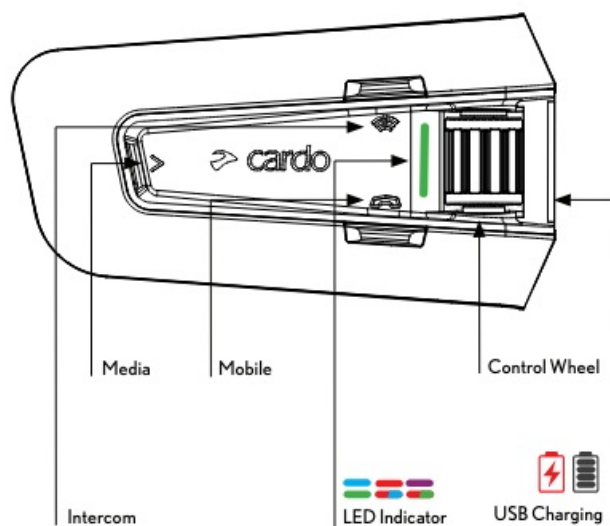
CONNECT APP



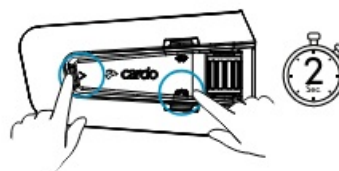
WE SPEAK YOUR LANGUAGE



Getting Started



On / Off



Auto On / Off

- Auto ON once unit detects movement.
- Auto OFF after a few seconds of no movement.
- Recommended: manual turn off for storing or shipping.



Phone Pairing



LED Red & Blue



Press & Hold

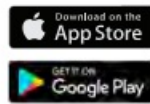


Number of Taps

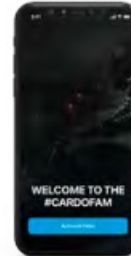




Download



Register and Activate



Choose Language



Update Software

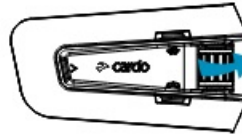


General

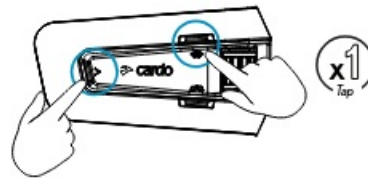
 Volume Up



 Volume Down



 Mute / Unmute Microphone



 Voice Assistant



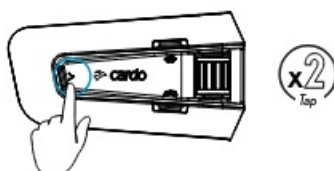
Radio



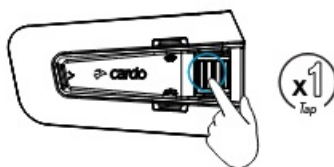
Set Presets



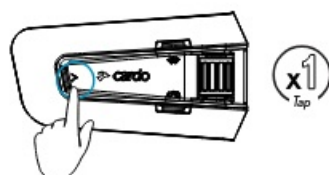
On



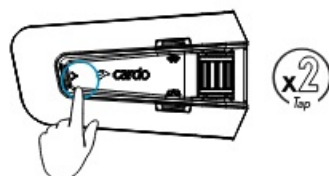
Off



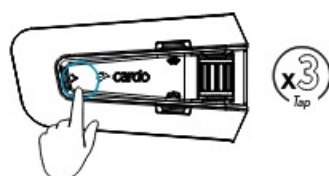
 Next Preset



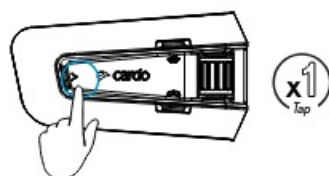
 Previous Preset



 Start Scan

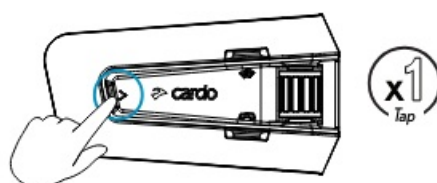


 Stop Scan



Music

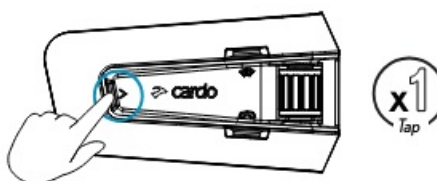
▶ On



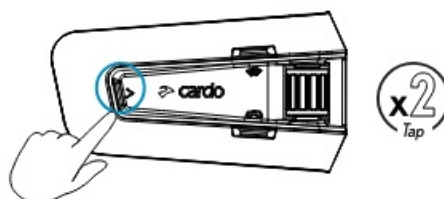
|| Off



▶ Next



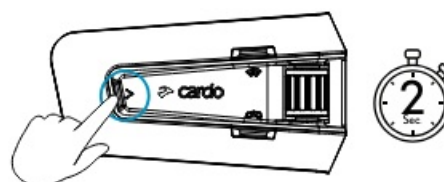
◀ Previous



Switch Source

📻 Music to Radio

🎵 Radio to Music



Phone Call

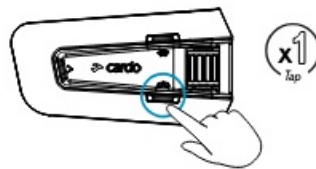
 Answer



 Ignore



 End Call



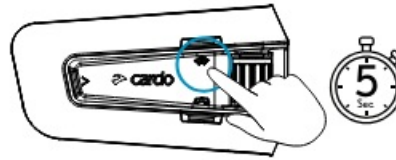
 Redial



DMC Intercom



Grouping



LED Red & Green

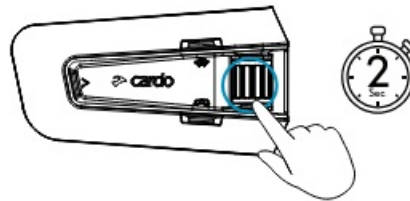


Grouping Success

LED Purple



Mute / Unmute Group



Share Call



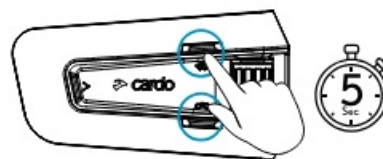
Switch Source



DMC to Bluetooth®



Bluetooth® to DMC



ADVANCED FEATURES

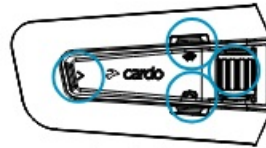
Crash Detection



Setup



Cancel Crash Alert



Any button

OR



ADVANCED FEATURES | Phone Call



Set Speed Dial



Call Speed Dial



Music Sharing



Set Sharing Partner

1



2



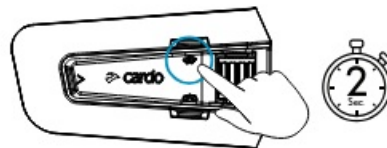
3



4

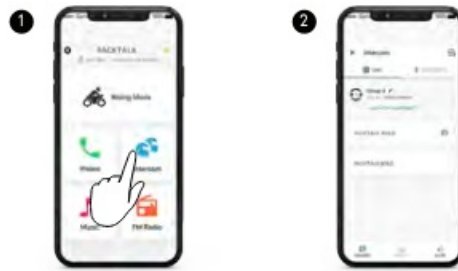


Start / Stop Sharing



DMC Intercom

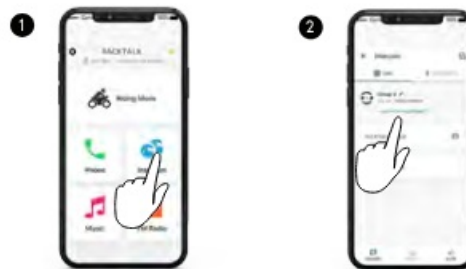
Set Private Chat Partner



Start / Stop Private Chat



Add Bluetooth passenger

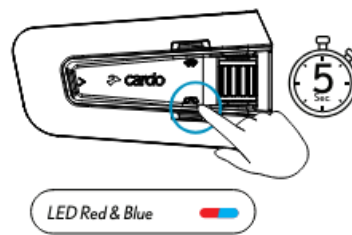


Start/Stop Passenger Intercom

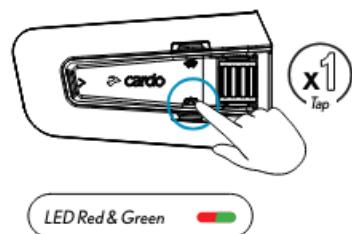


GPS Pairing

1 Step 1



2 Step 2

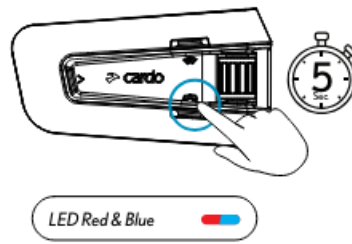


3 Step 3

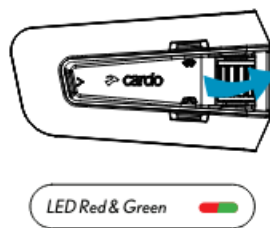


Bike Pairing

1 Step 1



2 Step 2

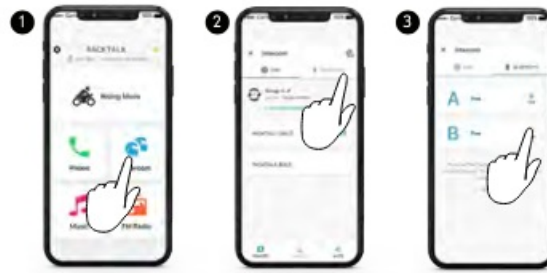


3 Step 3

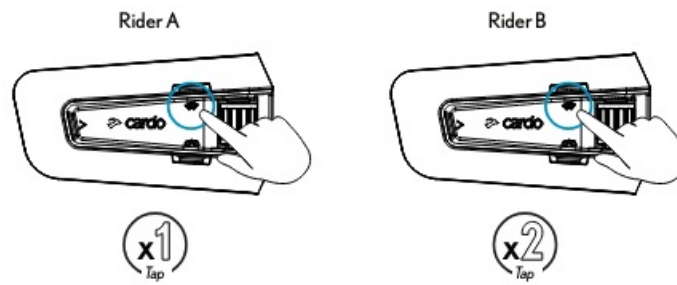


Universal Bluetooth intercom

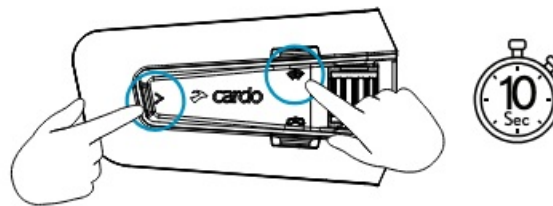
Bluetooth Intercom Pairing



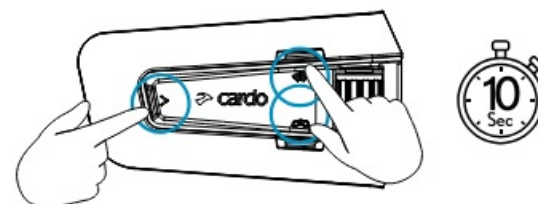
Start / Stop Intercom



Reboot



Factory Reset



Voice Commands – Always On!



- **Answer**
- **Ignore**
- "Hey Cardo, **end call**"
- "Hey Cardo, **speed dial**"
- "Hey Cardo, **redial number**"



- "Hey Cardo, **music on**"
- "Hey Cardo, **music off**"
- "Hey Cardo, **next track**"
- "Hey Cardo, **previous track**"
- "Hey Cardo, **share music**"



- "Hey Cardo, **radio on**"
- "Hey Cardo, **radio off**"
- "Hey Cardo, **next station**"
- "Hey Cardo, **previous station**"



For Bluetooth intercom only

- "Hey Cardo, **call intercom**"
- "Hey Cardo, **end intercom**"



- **"Hey Siri"**
- **"OK Google"**



- "Hey Cardo, **volume up**"
- "Hey Cardo, **volume down**"
- "Hey Cardo, **mute audio**"
- "Hey Cardo, **unmute audio**"
- "Hey Cardo, **mute microphone**"
- "Hey Cardo, **unmute microphone**"



- **Ignore**



- "Hey Cardo, **battery status**"



cardosystems.com

.....

Cardosystems.com/update

Cardosystems.com/support

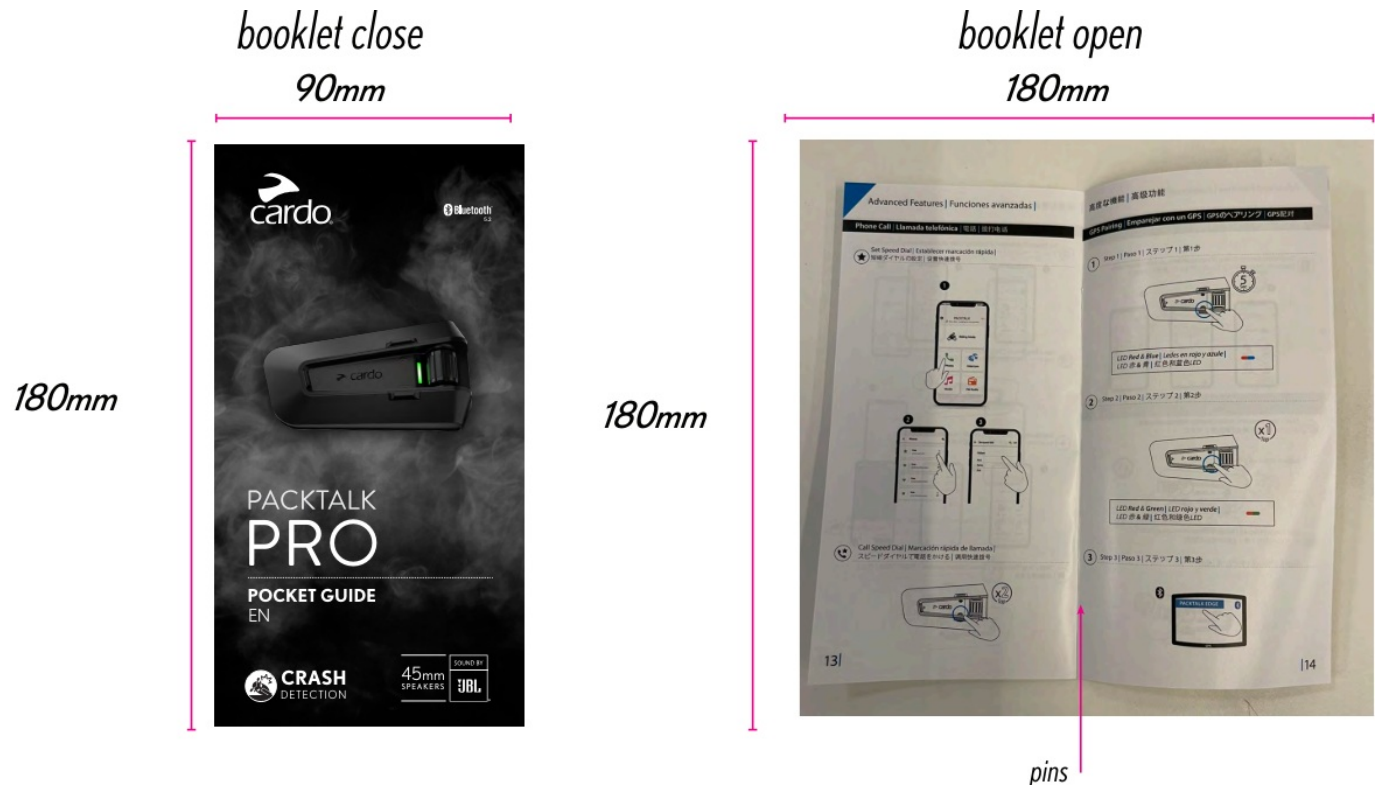
cardosystems.com

Cardosystems.com/update

Cardosystems.com/support



Measurements



TYPE APPROVAL

TYPE APPROVAL			
P/N	MAN00768		
DESCRIPTION	POCKET GUIDE		
FILE NAME	MAN00768_MAN POCKET GUIDE FOR PT PRO_EN_A01		
LANGUAGE	EN		
PRODUCT TYPE	MANUAL		
MATERIAL	P2 C4+4 105-115gr glossy art paper folded - Booklet with pins		
PRINTING PROCESS	COLOR: CMYK		
SECONDARY PROCESS	X		
ATTACHED FILES	1. GRAPHIC FILE - PDF		
MEASUREMENT	OPEN :180mm*180mm , CLOSE: 90mm -180mm		
CLIENTS/ DISTRIBUTOR	X		
SPECIAL REQUIREMENT	X		
REVISION	DESCRIPTION	DATE	NAME
A01	FINAL	17/1/24	Almog

Rev	Change Description	Date	Approved by
A01	first version	17.1.24	almog

Documents / Resources



[cardo PACKTALK PRO Built In Crash Detection Sensor \[pdf\] User Guide](#)

PACKTALK PRO, PACKTALK PRO Built In Crash Detection Sensor, Built In Crash Detection Sensor, Crash Detection Sensor, Detection Sensor, Sensor

References

- [➔ Bluetooth Headsets & Speakers for Helmets | Cardo Systems](#)
- [➔ Product Support Center | Cardo Systems | Cardo Systems](#)
- [➔ Cardo Update for Headsets & Speakers | Cardo Systems](#)
- [User Manual](#)

[Manuals+](#), [Privacy Policy](#)

This website is an independent publication and is neither affiliated with nor endorsed by any of the trademark owners. The "Bluetooth®" word mark and logos are registered trademarks owned by Bluetooth SIG, Inc. The "Wi-Fi®" word mark and logos are registered trademarks owned by the Wi-Fi Alliance. Any use of these marks on this website does not imply any affiliation with or endorsement.