

CARBYTE
POWERED BY OBDLINK
OBDLINK MX
Plus Scanner
Line Bluetooth
OBD Adapter



Carbyte OBDLINK MX Plus Scanner Line Bluetooth OBD Adapter User Guide

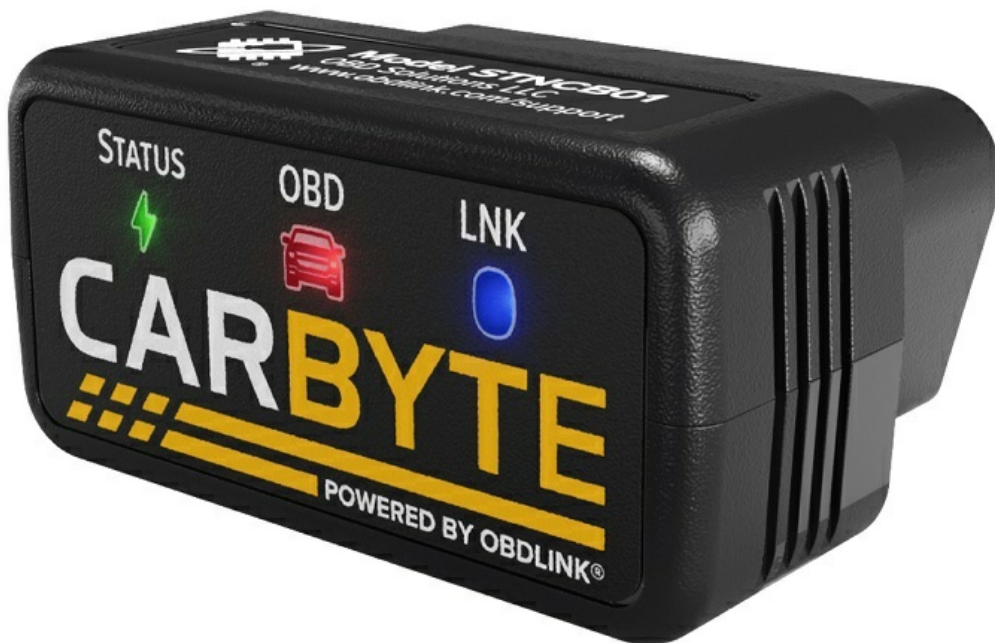
[Home](#) » [Carbyte](#) » Carbyte OBDLINK MX Plus Scanner Line Bluetooth OBD Adapter User Guide 

Contents

- [1 Carbyte OBDLINK MX Plus Scanner Line Bluetooth OBD Adapter](#)
- [2 Product Information](#)
- [3 Using Instruction](#)
- [4 Download the optional Carbyte app](#)
- [5 Open the Carbyte app and launch the Connection Wizard](#)
- [6 Documents / Resources](#)
 - [6.1 References](#)



Carbyte OBDLINK MX Plus Scanner Line Bluetooth OBD Adapter



Product Information

Product Specifications:

- **Model:** Carbyte OBD Scanner
- **Compatibility:** iOS and Android devices
- **Connection:** OBD port in vehicles
- **Sync Time:** Up to 2 minutes

Product Usage Instructions:

Downloading the Carbyte App:

1. Download the optional Carbyte app from the app store.
2. Scan the QR code or visit www.carbyte.com/apps to download the app.

Pairing with Carbyte:

1. Open the Carbyte app on your device and launch the Connection Wizard.
2. For security purposes, pair your iOS or Android device with Carbyte within the first 10 minutes after plugging it in. If needed, unplug and replug Carbyte to pair with a new device.

Quick Start Guide:

1. Plug Carbyte into the OBD port of your vehicle.
2. Start the engine while ensuring the ignition is off and the vehicle is in the park.
3. Allow Carbyte to sync with the vehicle; this process can take up to 2 minutes. Sync is complete when the Status LED starts blinking slowly.

Frequently Asked Questions (FAQ):

1. What should I do if I can't pair my device with Carbyte?

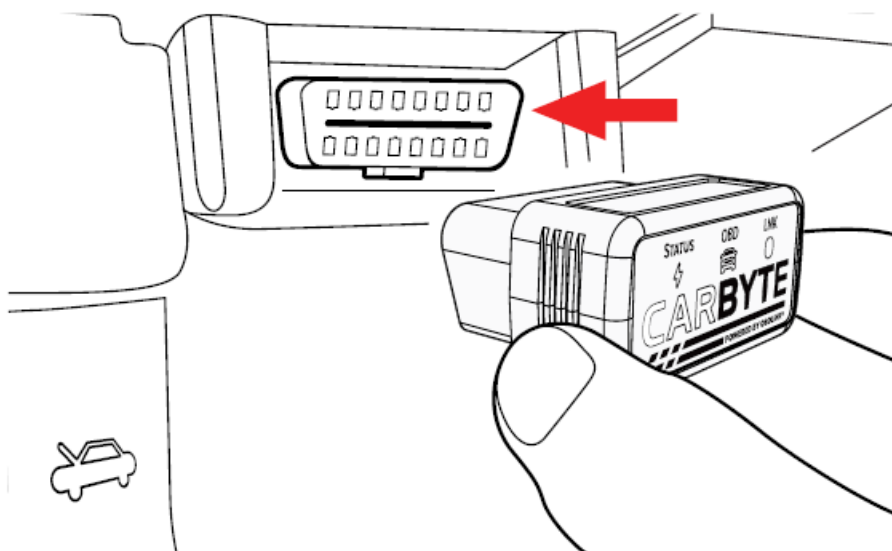
If you are unable to pair your device within the first 10 minutes, unplug and replug Carbyte to initiate the pairing process again.

2. How do I contact support for assistance?

You can email support@carbyte.com or click on 'Share' in the Carbyte app for assistance.

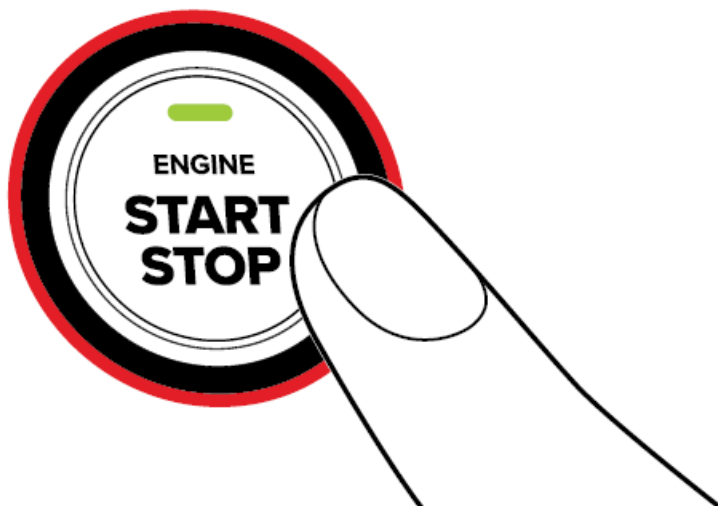
Using Instruction

1. Plug Carbyte into the OBD port



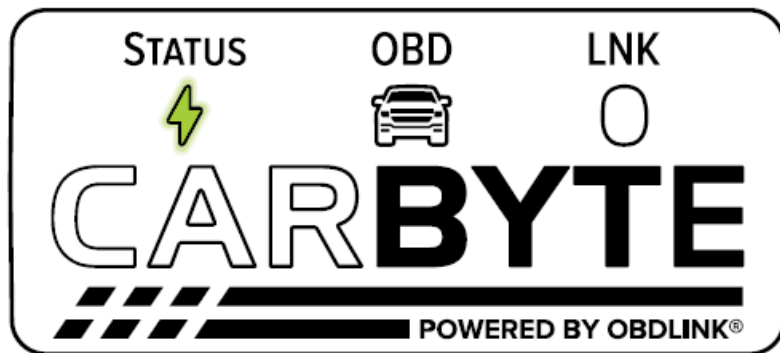
make sure the ignition is off

2. Start the engine



keep the vehicle in park

3. Let Carbyte sync with the vehicle



- This can take up to 2 minutes. Sync is complete when the “Status” LED starts blinking slowly

Download the optional Carbyte app




scan the QR code or visit www.carbyte.com/apps.


Open the Carbyte app and launch the Connection Wizard

For security purposes, new iOS or Android devices can only pair with Carbyte within the first 10 minutes after plug-in. To pair with a new device, you need to unplug and replug Carbyte

Need assistance?

email support@carbyte.com or click “Share”  in the Carbyte app after connecting to the vehicle.

Documents / Resources

	Carbyte OBDLINK MX Plus Scanner Line Bluetooth OBD Adapter [pdf] User Guide OBDLINK MX Plus Scanner Line Bluetooth OBD Adapter, OBDLINK MX Plus, Scanner Line Bluetooth OBD Adapter, Line Bluetooth OBD Adapter, Bluetooth OBD Adapter, OBD Adapter, Adapter
---	---

References

-  [Bundled App for OBDLink® - OBDLink® - OBD Solutions](#)
- [User Manual](#)

[Manuals+](#), [Privacy Policy](#)

This website is an independent publication and is neither affiliated with nor endorsed by any of the trademark owners. The “Bluetooth®” word mark and logos are registered trademarks owned by Bluetooth SIG, Inc. The “Wi-Fi®” word mark and logos are registered trademarks owned by the Wi-Fi Alliance. Any use of these marks on this website does not imply any affiliation with or endorsement.