




CARBEST 465116 Autolift System Instruction Manual

[Home](#) » [CARBEST](#) » CARBEST 465116 Autolift System Instruction Manual 

**CARBEST 465116 Autolift System
Instruction Manual**

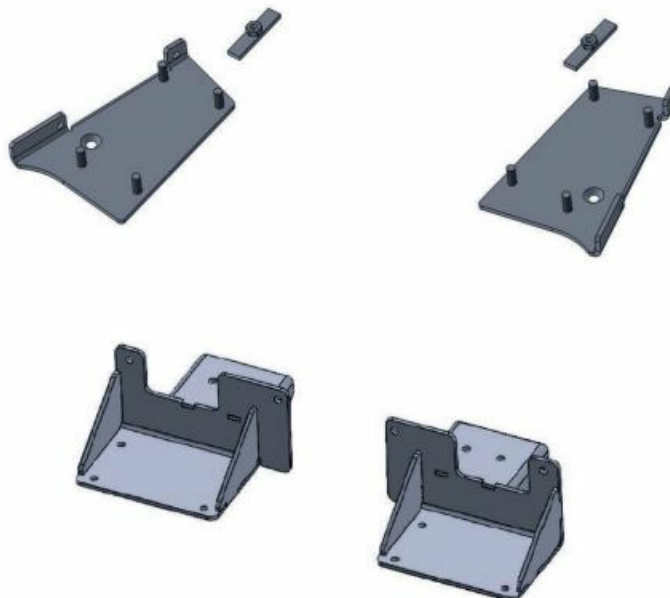
Autolift System

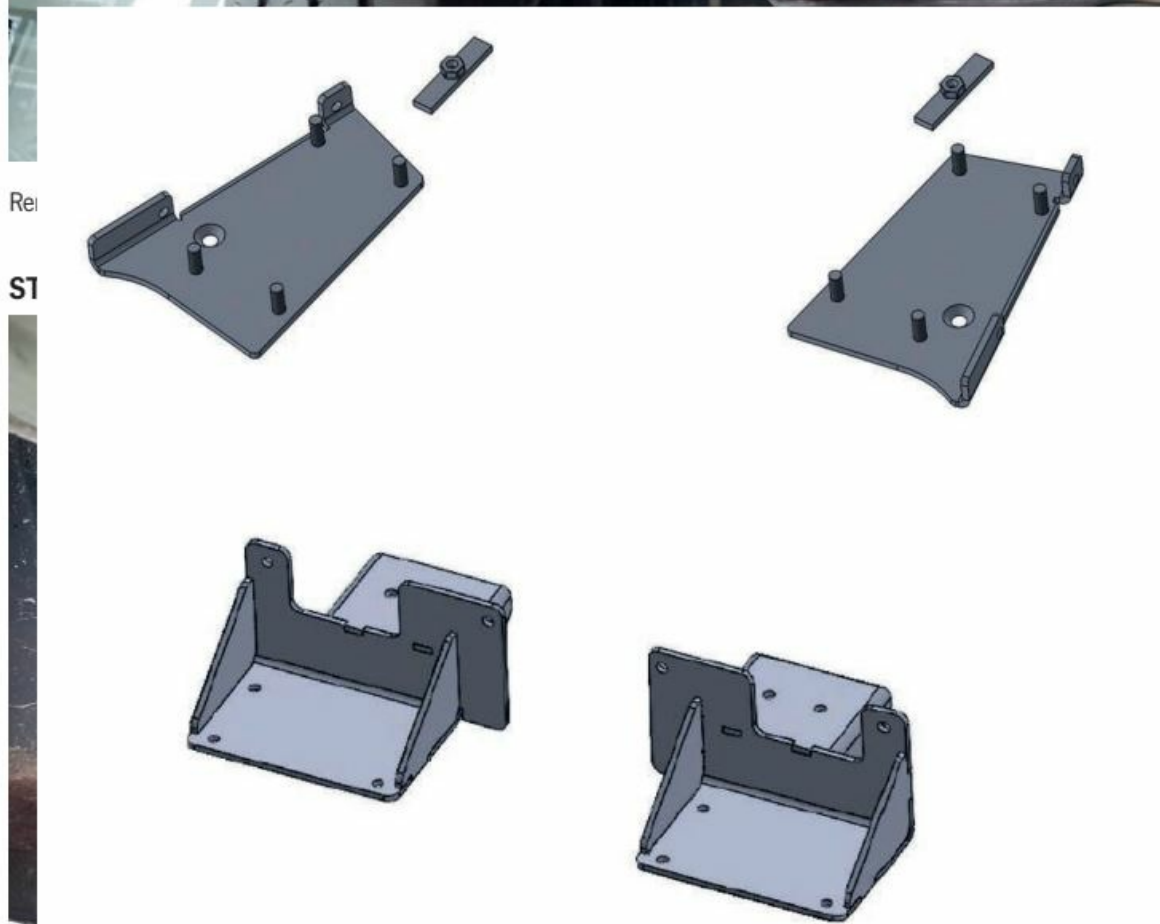
ADAPTER DUCATO X290

mit Adblue

Art. 465116

FRONT + HECK TRANSPORTER





EN - USER'S INSTRUCTION
Insert the sealing plate into the square hole.

STEP 3:



Insert the sealing plate with the screw hole concentric to the square hole in the chassis.

STEP 4:



Push the adapter as far forward as possible.

STEP 5:



Fix the adapter with the sealing plate that you inserted into the hole.

STEP 6:



Drill two 8 mm holes.

STEP 7:



Fix with two M8 bolts.

STEP 8:



If necessary, loosen the bolts supporting the tank and move it a few centimeter toward the center of the vehicle.

ATTENTION:

THE MOTOR JACK SHOULD BE FACING THE CENTER OF THE VEHICLE, WHILE ROTATING TOWARDS THE BACK.

Rear adapter Ducato X250 (REAR VAN)

ATTENTION:

THE MINIMUM MEASURE REQUIRED FOR THE INSTALLATION FOR THE SPECIFIC ADAPTER FOR DUCATO VAN:



41 CENTIMETER FROM THE TOWING EYE WELDING SPOT TO THE GROUND IN THE POINT INDICATED.

STEP 1:

The rear adapters must be placed behind the rear axle, at the outer rim of the chassis. Insert the sealing plates in the point shown below. Subsequently fix the sealing plate with 2 10 x 30 mm screws.



STEP 2:

Fix the adapter using the 2 10 x 140 mm bolts, subsequently fix the jacks.





ATTENTION:
BOTH REAR MOTOR JACKS SHOULD BE FACING THE OUTSIDE OF THE VEHICLE, WHILE ROTATING
TOWARDS THE BACK.




REIMO REISEMOBIL-CENTER GMBH
63329 EGELSBACH · BOSCHRING 10 · GERMANY · WWW.REIMO.COM
MADE IN ITALY, ©REIMO 06/2022

Contents

1 Documents / Resources

1.1 References

Documents / Resources



CARBEST
INNOVATIONS FOR WHOLE LIFE

Autolift System

465116 Autolift System

465116 Autolift System

465116 Autolift System

465116 Autolift System

CARBEST 465116 Autolift System [pdf] Instruction Manual

465116 Autolift System, 465116, Autolift System, System

References

- **User Manual**

Manuals+, Privacy Policy

This website is an independent publication and is neither affiliated with nor endorsed by any of the trademark owners. The "Bluetooth®" word mark and logos are registered trademarks owned by Bluetooth SIG, Inc. The "Wi-Fi®" word mark and logos are registered trademarks owned by the Wi-Fi Alliance. Any use of these marks on this website does not imply any affiliation with or endorsement.