
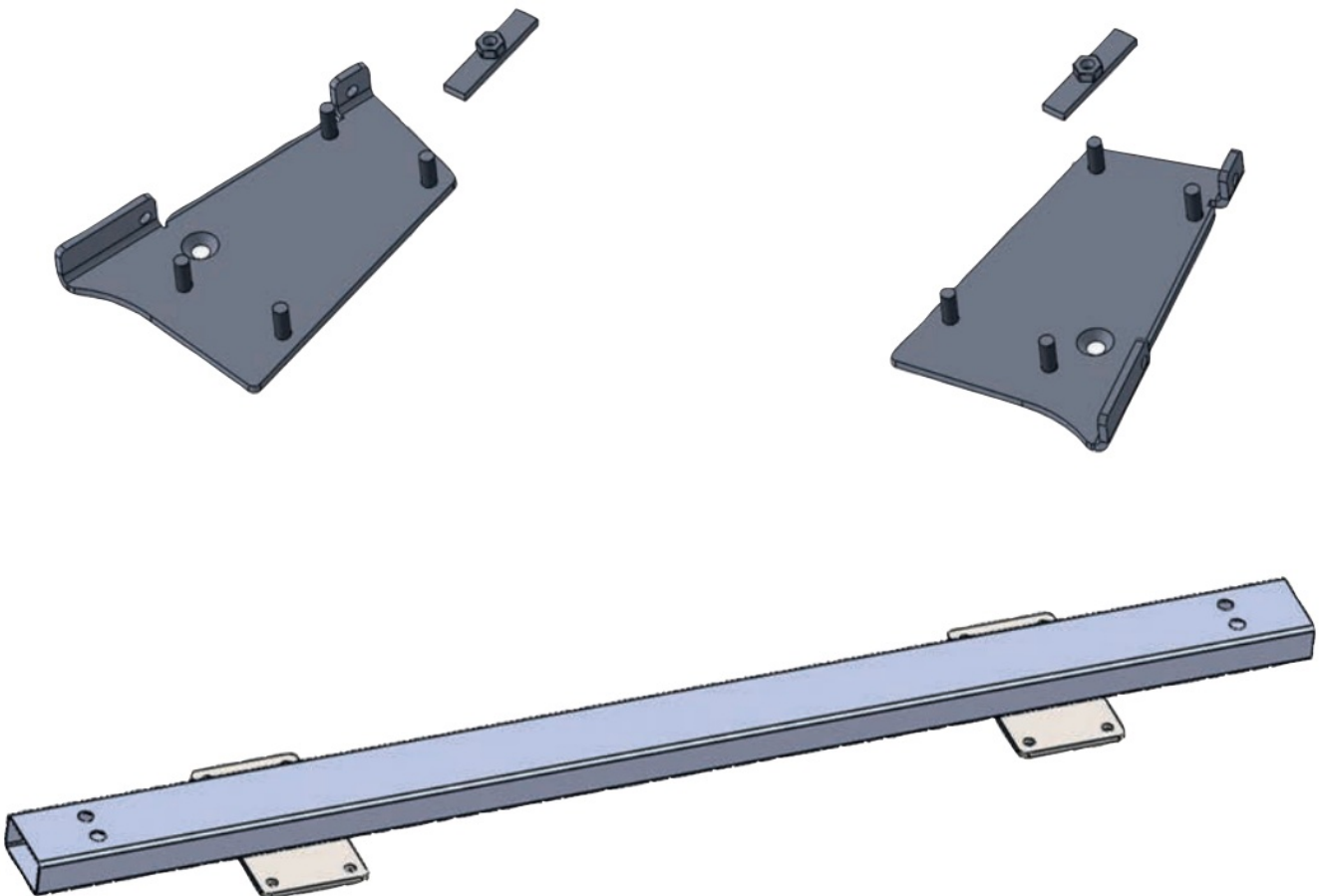


## CARBEST 465113 Autolift System User Manual

[Home](#) » [CARBEST](#) » CARBEST 465113 Autolift System User Manual 

### CARBEST 465113 Autolift System



## Contents

- [1 FRONT ADAPTER DUCATO X290](#)
- [2 Rear adapter Ducato X250 \(in front of the rear axle\)](#)
- [3 Customer Support](#)
- [4 Documents / Resources](#)
- [5 Related Posts](#)

## FRONT ADAPTER DUCATO X290

### STEP 1:

Remove the rubber stopper.



### STEP 2:

Insert the mounting plate into the square hole.



**STEP 3:**

Insert the mounting plate with the screw hole concentric to the square hole in the chassis.



**STEP 4:**



Push the adapter as far forward as possible.



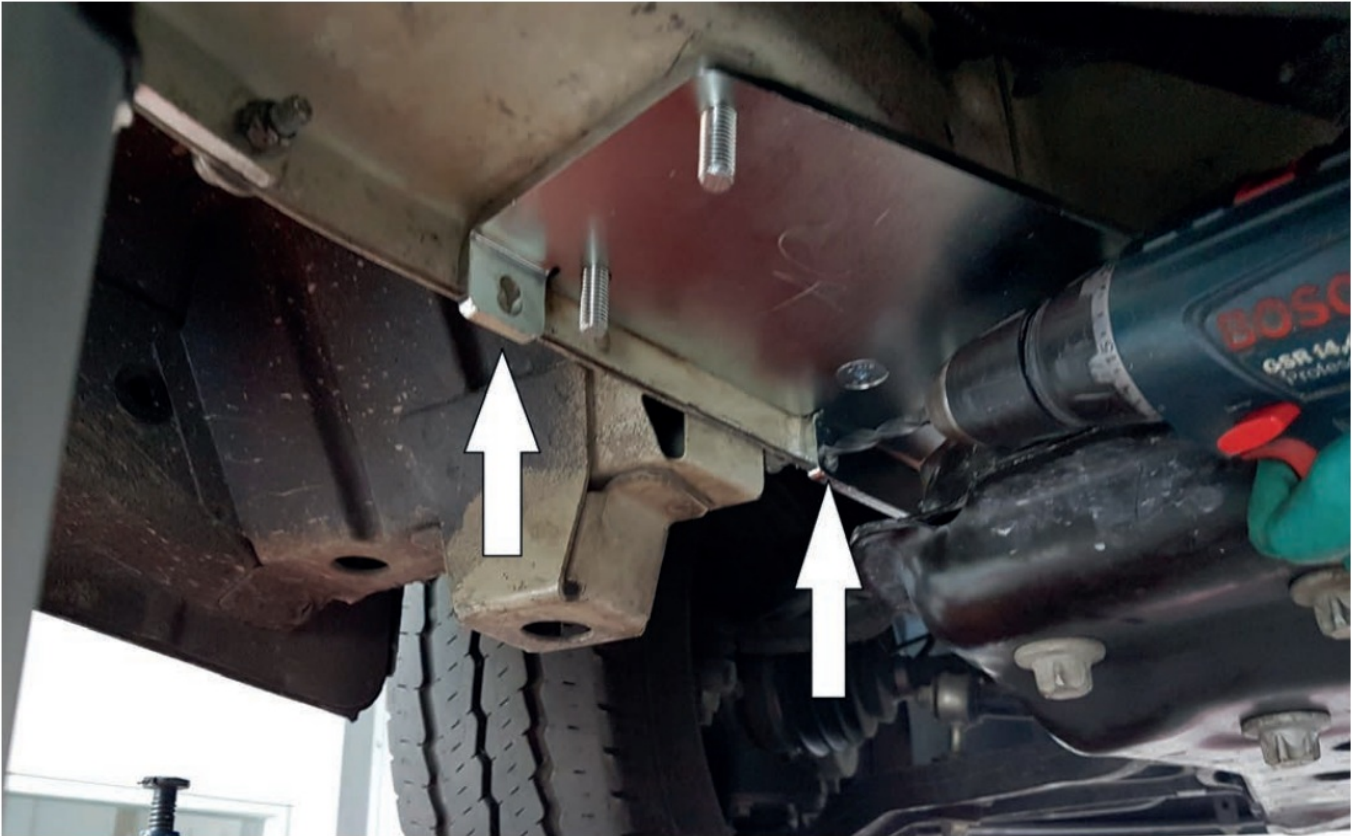
**STEP 5:**

Fix the adapter with the mounting plate that you inserted into the hole.



#### STEP 6:

Drill two 8 mm holes.



#### STEP 7:

Fix the adapter plate with two M8 bolts on the chassis.





#### **STEP 8:**

If necessary, loosen the bolts supporting the tank and move it a few centimeter toward the center of the vehicle.



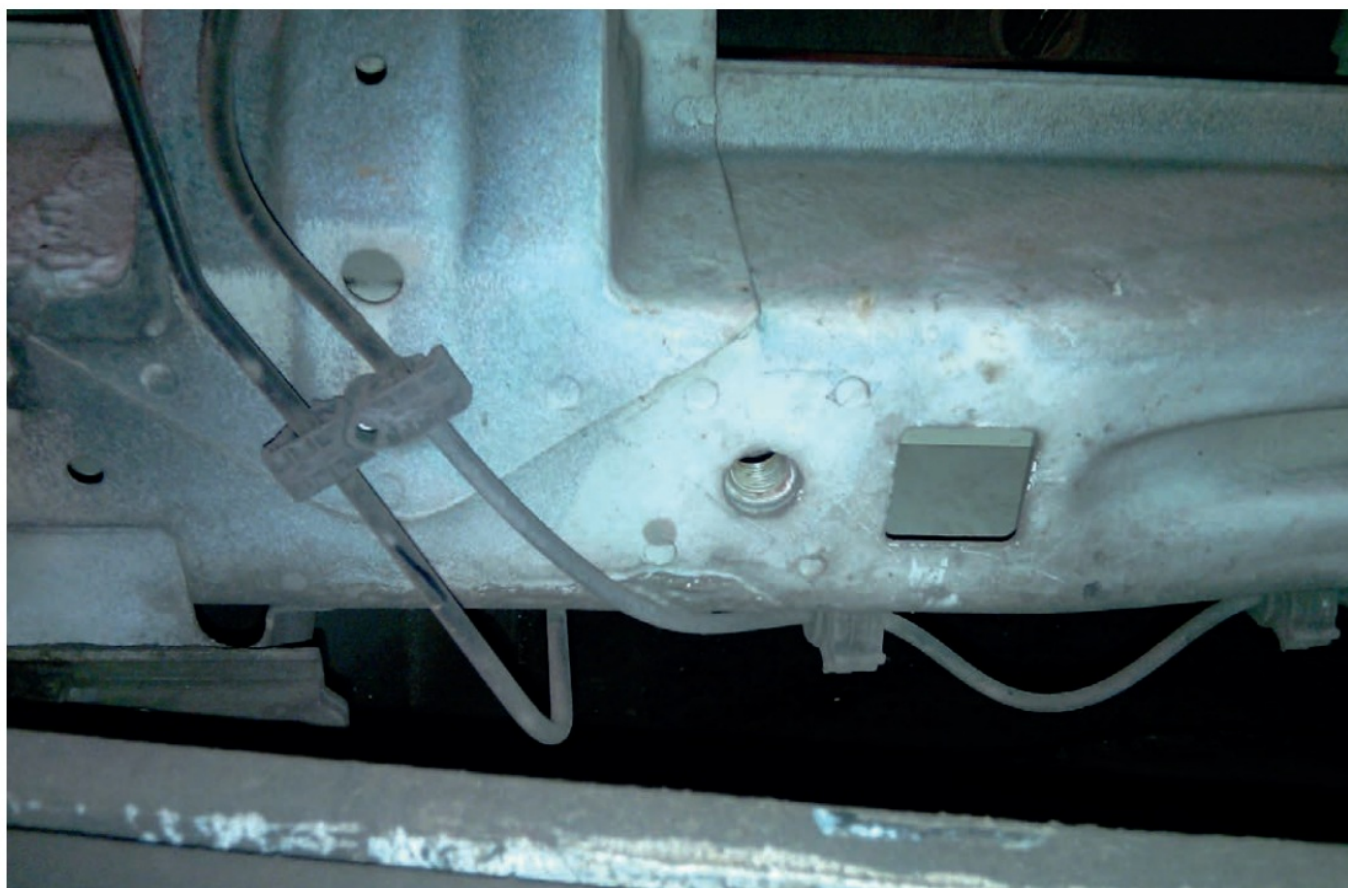
#### **ATTENTION:**

THE MOTOR JACK SHOULD BE FACING THE CENTER OF THE VEHICLE, WHILE BEING ABLE TO ROTATE TOWARDS THE BACK.

#### **Rear adapter Ducato X250 (in front of the rear axle)**

#### **STEP 1:**

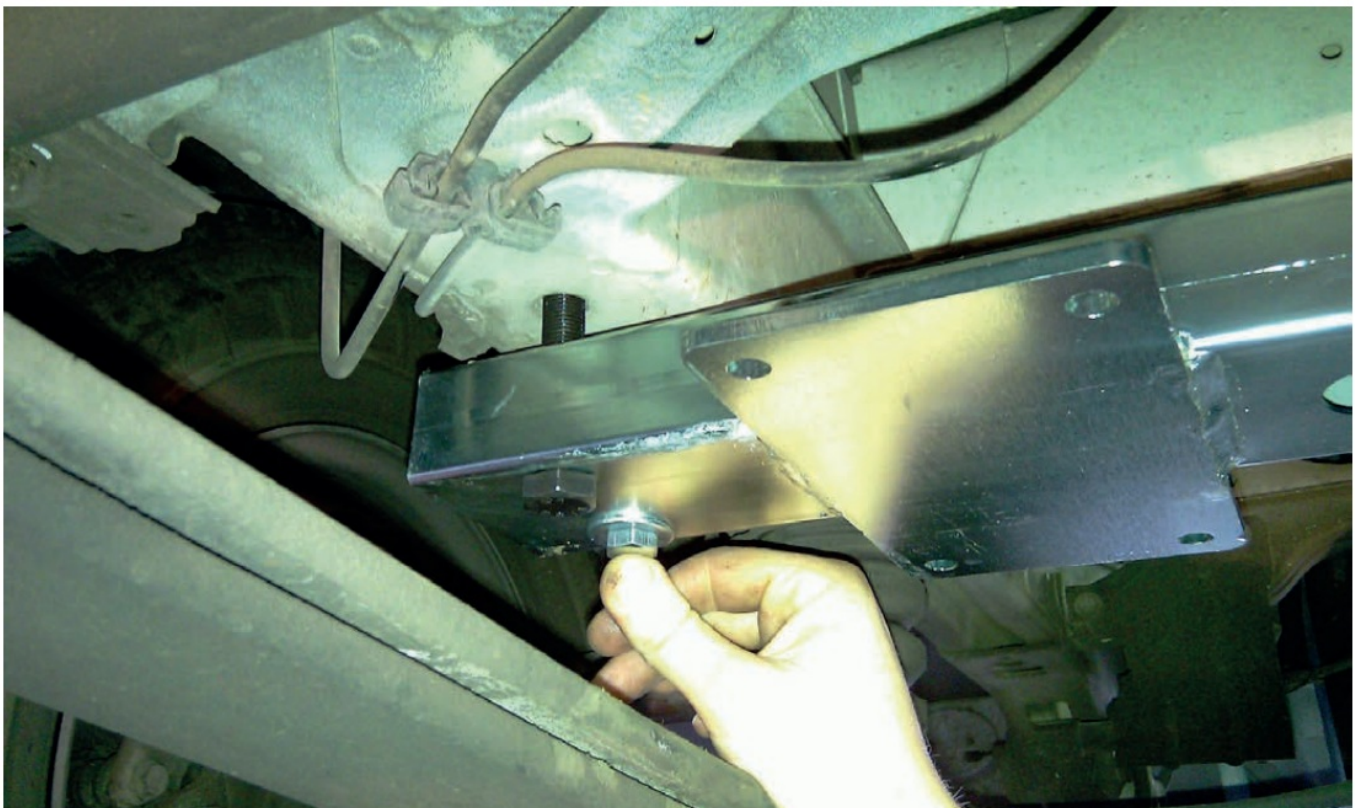
The rear adapter must be placed before the rear axle, at the place shown in the picture below



## STEP 2:

Insert and position the mounting plate (the plate with only one hole), proceed then with fixing it with 10 x 70 mm and 14 x 70 mm bolts.





**ATTENTION:**

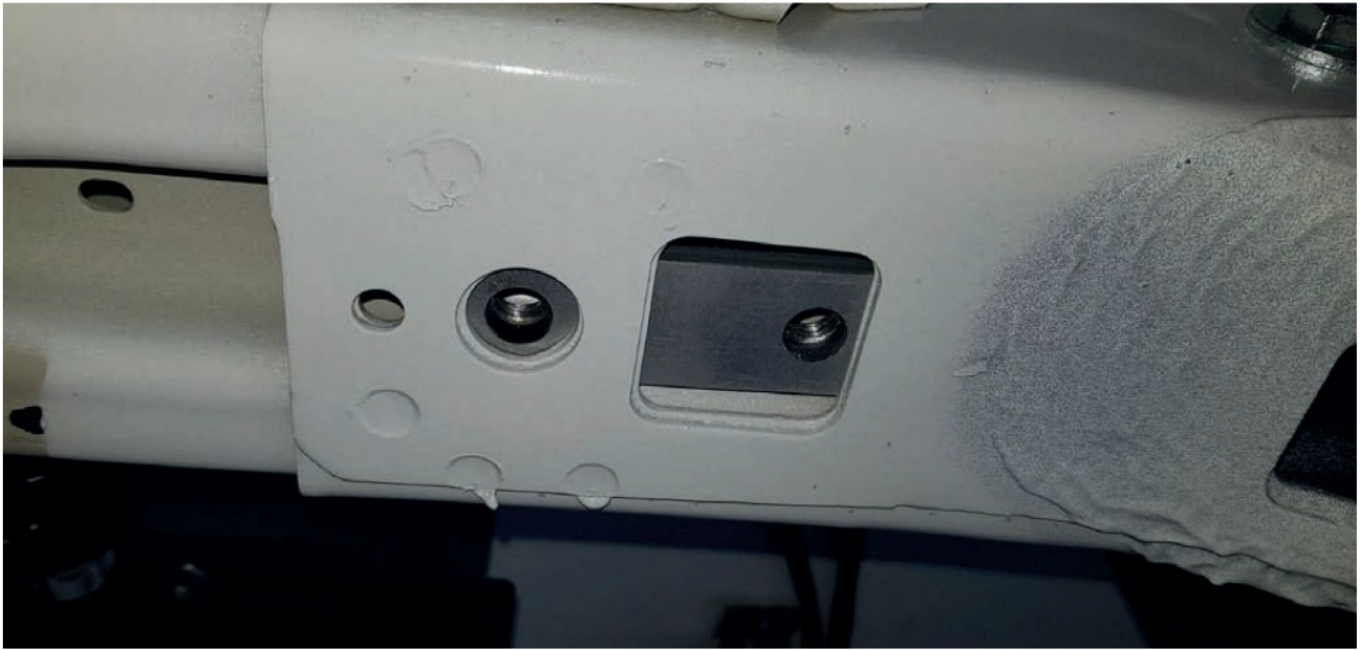
BOTH REAR MOTOR JACKS SHOULD BE FACING THE CENTER OF THE VEHICLE, WHILE BEING ABLE TO ROTATE TOWARDS THE FRONT.

**STEP 3:**

The rear adapter must be placed behind the rear axle at the place shown in the photos below, insert the sealing plates (with two holes) and pay attention at the electrical wiring; if necessary move it and insert the adapter into it (see second photo below).







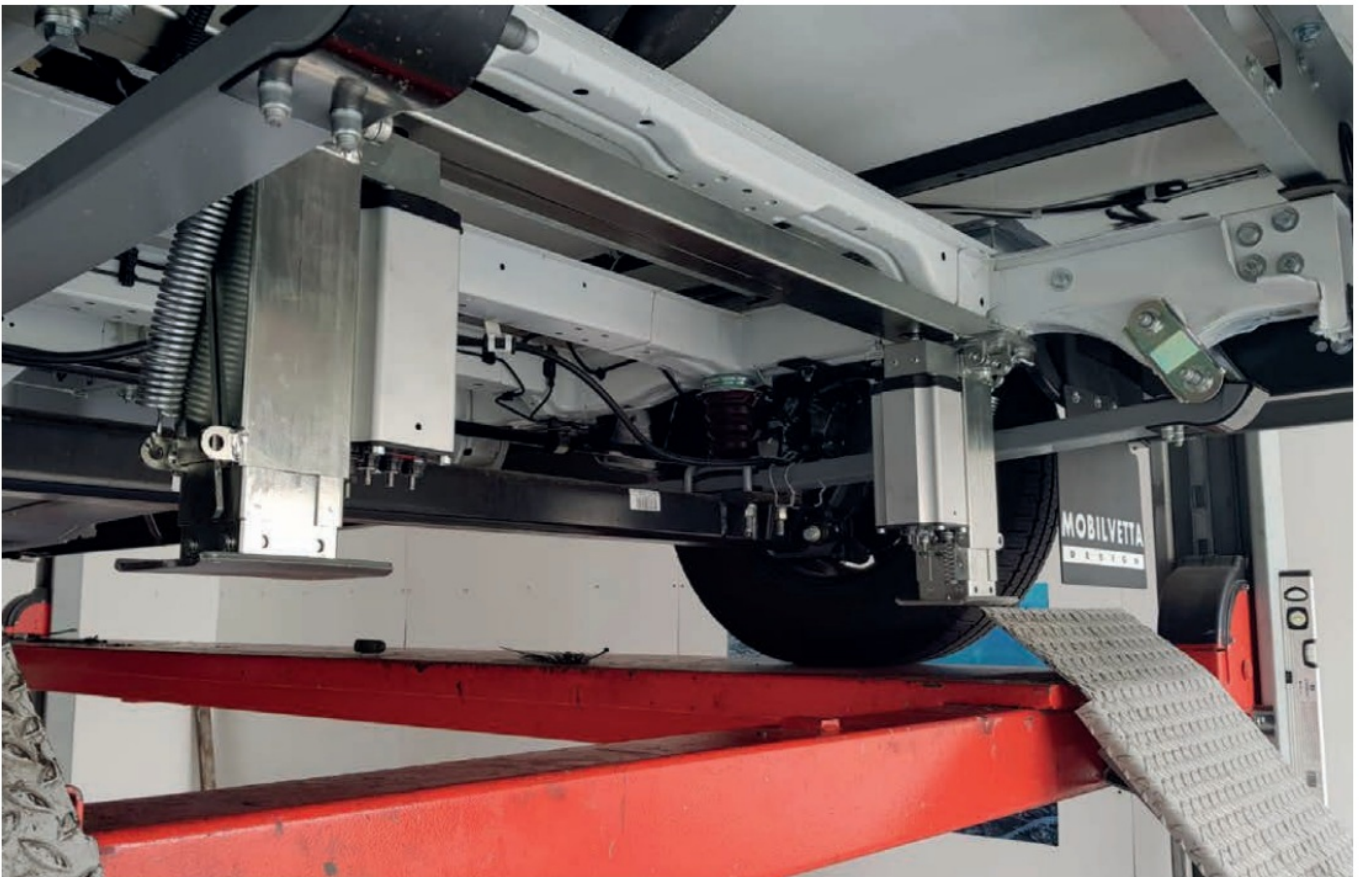
Move the electric wiring to the side, then insert the adapter.





**STEP 4:**

Fix the adapter using 4 10 x 70 mm bolts, then fix the jacks.

**ATTENTION:**

BOTH REAR MOTOR JACKS SHOULD BE FACING THE CENTER OF THE VEHICLE, WHILE BEING ABLE TO ROTATE TOWARDS THE FRONT OR THE REAR.

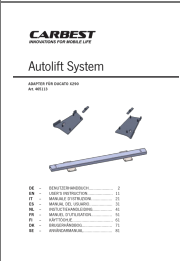
**Customer Support**



# ***CARBEST***

## ***INNOVATIONS FOR MOBILE LIFE***

### Documents / Resources

 <p>The thumbnail shows the front cover of the user manual. It features the CARBEST logo at the top, followed by the title 'Autolift System'. Below the title is a small illustration of the system components. At the bottom, there is a table of contents listing various parts and their page numbers.</p>	<p><a href="#">CARBEST 465113 Autolift System</a> [pdf] User Manual 465113 Autolift System, 465113, Autolift System, System</p>
--	---