


CARBEST 465112 Autolift System User Manual

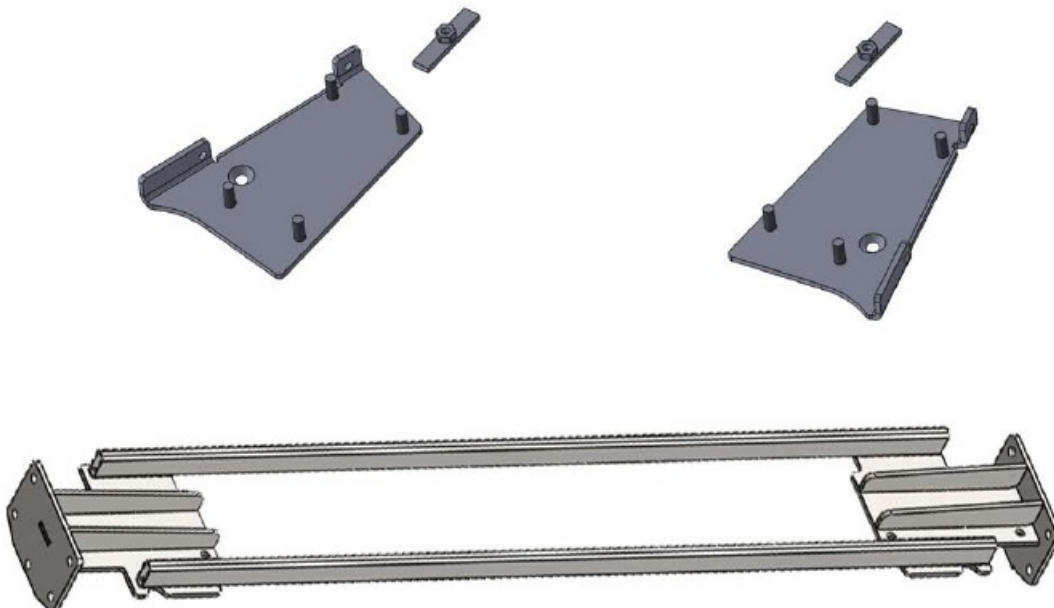
[Home](#) » [CARBEST](#) » CARBEST 465112 Autolift System User Manual 

Contents

- [1 CARBEST 465112 Autolift System](#)
- [2 Product Usage Instructions](#)
- [3 FRONT ADAPTER DUCATO X290](#)
- [4 REAR ADAPTER ALKO LEFT/RIGHT](#)
- [5 Documents / Resources](#)
- [6 Related Posts](#)

CARBEST

CARBEST 465112 Autolift System



Product Information:

- Product Name: Autolift System
- Model: 465112
- Compatibility: Ducato X290 with ALKO rear chassis
- Components: Front Adapter, Rear Adapter

Product Usage Instructions

Front Adapter Ducato X290:

- Step 1: Remove the rubber stopper.
- Step 2: Insert the mounting plate into the square hole.
- Step 3: Insert the mounting plate with the screw hole concentric to the square hole in the chassis.
- Step 4: Push the adapter as far forward as possible.
- Step 5: Fix the adapter with the mounting plate that you inserted into the hole.
- Step 6: Drill two 8 mm holes.
- Step 7: Fix the adapter plate with two M8 bolts on the chassis.
- Step 8: If necessary, loosen the bolts supporting the tank and move it a few centimeters toward the center of the vehicle. The motor jack should be facing the center of the vehicle while rotating towards the back.

Rear Adapter ALKO:

No specific usage instructions provided in the text extract. Please refer to the complete user manual for detailed instructions.

Note: The text extract includes instructions in multiple languages.

Please refer to the appropriate language section for usage instructions specific to your language.

ADAPTER FOR DUCATO X290
WITH ALKO REAR CHASSIS
Art. 465112

FRONT ADAPTER DUCATO X290

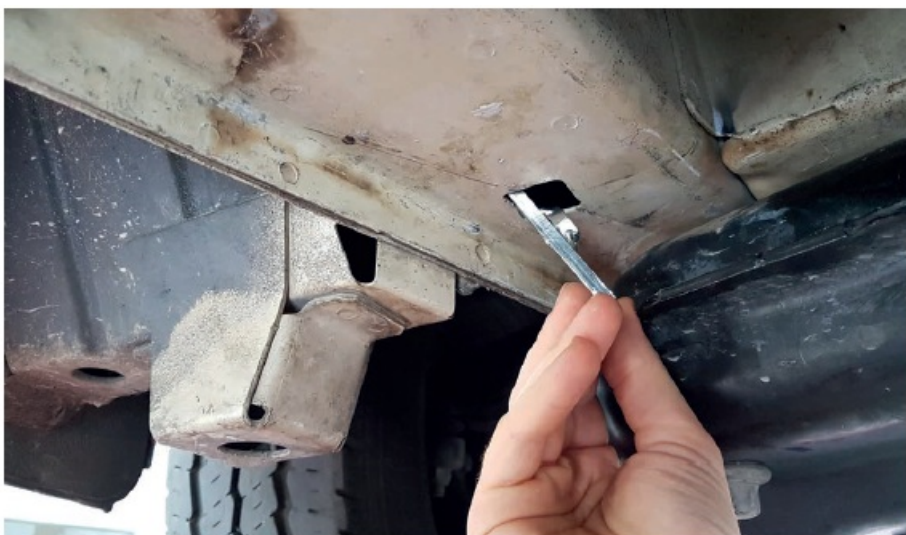
STEP 1:

Remove the rubber stopper.



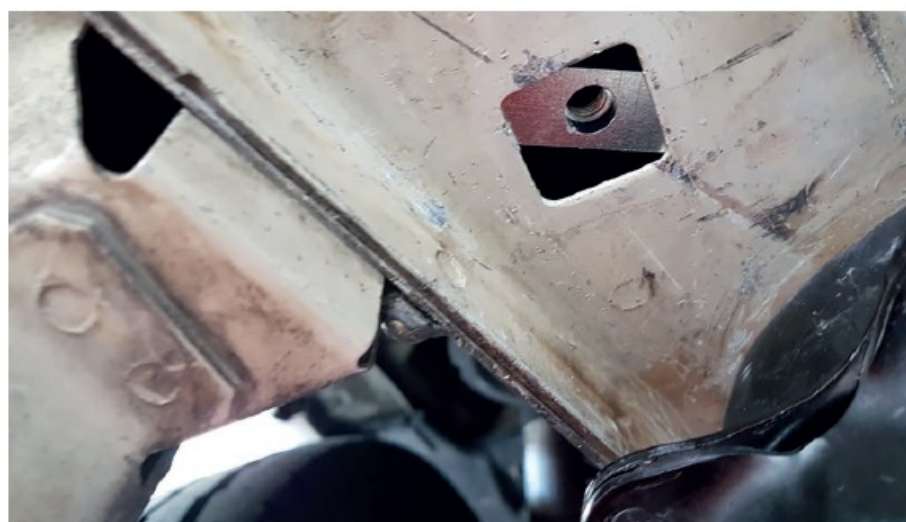
STEP 2:

Insert the mounting plate into the square hole.



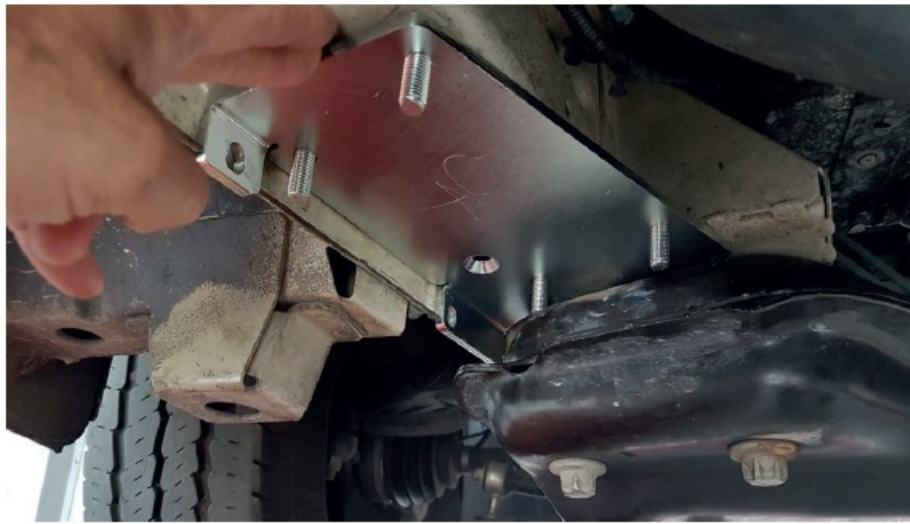
STEP 3:

Insert the mounting plate with the screw hole concentric to the square hole in the chassis.



STEP 4:

Push the adapter as far forward as possible.



STEP 5:

Fix the adapter with the mounting plate that you inserted into the hole.



STEP 6:

Drill two 8 mm holes.



STEP 7:

Fix the adapterplate with two M8 bolts on the chassis.



STEP 8: If necessary, loosen the bolts supporting the tank and move it a few centimeter toward the center of the vehicle.

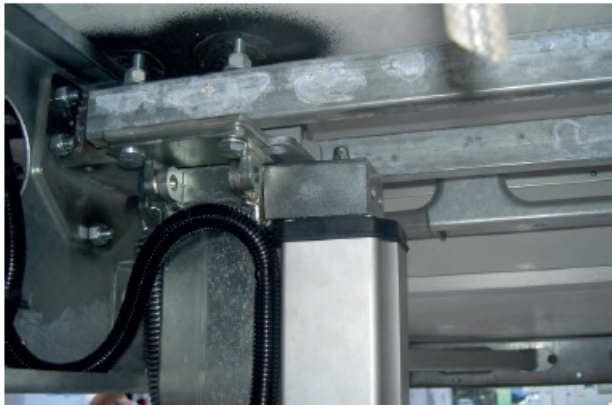
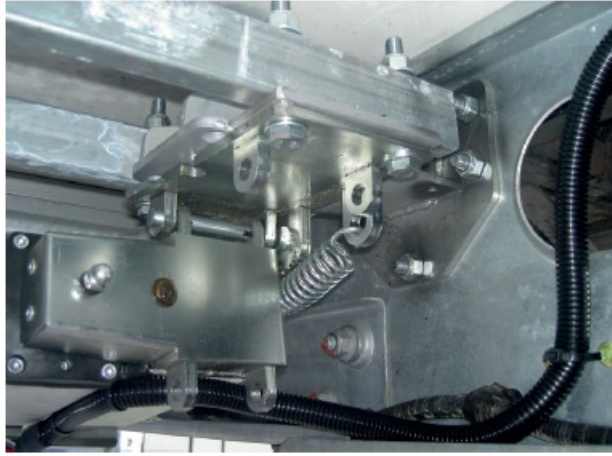


ATTENTION:

THE MOTOR JACK SHOULD BE FACING THE CENTER OF THE VEHICLE, WHILE ROTATING TOWARDS THE BACK.


REAR ADAPTER ALKO LEFT/RIGHT

- Fix the adapter at least 34 cm above the floor using the appropriate bolts.
- The adapters must be positioned and fixed specularly to each other.
- After fixing the adapters, place the connecting crossbars on top, then drill 10 mm diameter holes where the jacks will be fixed.
- Then fix the jacks by means of the appropriate 10 x 70 mm bolts, the bolts must then be tightened to the adapter, the jack and the crossbar together.
- Then adjust the limit switches (see installation manual for 465100).





REIMO REISEMOBIL-CENTER GMBH
63329 EGELSBACH • BOSCHRING 10 • GERMANY
WWW.REIMO.COM
MADE IN ITALY • © REIMO 02/2023



CARBEST
INNOVATIVE FOR MOBILE LIFT

Autolift System

ABOUT THE CARBEST LIFT
KIT ALSO INCLUDES:
AN INCH

CARBEST 465112 Autolift System [pdf] User Manual

465112 Autolift System, 465112, Autolift System, System