




Car Keys Express TYPKA-7010-0 Transponder Replacement Keys User Guide

[Home](#) » [Car Keys Express](#) » Car Keys Express TYPKA-7010-0 Transponder Replacement Keys User Guide 



Replacing car keys is simple and affordable again.™
Pairing Instructions for Toyota, Scion, Pontiac
Transponder Replacement Keys
V2.0223
Instruction Manual
Part Number: TYPKA-7010-0
www.CarKeysExpress.com

Contents

- [1 TYPKA-7010-0 Transponder Replacement Keys](#)
- [2 VEHICLE COMPATIBILITY](#)
- [3 BEFORE YOU BEGIN](#)
- [4 KEY PAIRING PROCESS: PAIR NEW KEY](#)
- [5 KEY PAIRING PROCESS: ERASE ALL BUT 1 EXISTING KEY](#)
- [6 FREQUENTLY ASKED QUESTIONS](#)
- [7 Documents / Resources](#)
 - [7.1 References](#)

TYPKA-7010-0 Transponder Replacement Keys

IMPORTANT NOTES

- You **MUST** have at least one existing key that already works with your vehicle in order to use the EZ Installer™. If you have no working keys, return the Simple Key to the retailer where it was purchased.
- The new keyblade **MUST** be cut before pairing. It can be cut at any local hardware store.
- Vehicle battery should be in good condition and fully charged prior to pairing the new key. Turn off headlights, radio, A/C fan, etc. to minimize battery draw during the process.
- Do not use the EZ Installer while the vehicle is in motion. Unplug it from the OBD port before driving the vehicle.
- For your security, a tamper-evident security label is installed over the EZ Installer connector. If this label is missing, damaged, or the word “VOID” appears on the EZ Installer, please exchange this Simple Key for a new one at the retailer where it was purchased.
- You will perform two steps: “PAIR NEW KEY” and “TESTING.” It is important to follow these steps in order to successfully complete the setup.
- If the user needs to pair and/or erase multiple keys, they do not have to remove the device from the OBD port after completing the entire process unless an error has occurred. However, if the user does remove the device and reconnect while transitioning from one process to another, that is OK.

LET’S GET STARTED

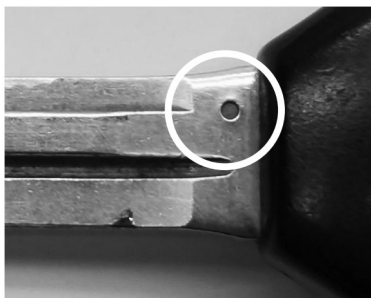
Simple Key requires **PAIRING**. It is important to follow these steps in order to successfully complete setup.

If you skip a step, the key **WILL NOT** work properly, and you’ll have to repeat the setup process.

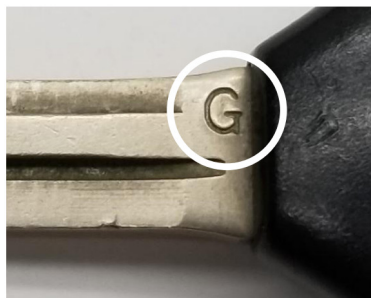
Find your **DIAL POSITION** in the following chart by referencing your vehicle’s make, model, year and the transponder type on your key.

VEHICLE COMPATIBILITY

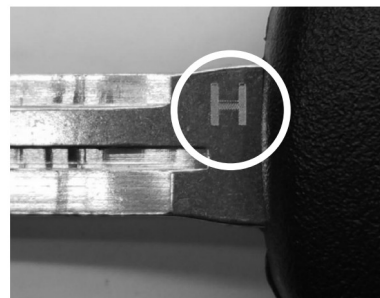
NOTE: Determine your transponder chip type. If the Vehicle Compatibility below has a dial position for transponder pairing for your vehicle’s make, model, and year, you will need to determine your transponder type. This can be found on the key blade near the base of the existing key. There will either be the letter G, the letter H, or a small dot indentation in the blade. If you can’t find the type, try all options given in the instructions.



Dot Chip



G Chip



H Chip

MAKE/MODEL	TRANSPONDER KEY CHIP TYPE	YEAR	PAIR NEW KEY		ERASE ALL BUT 1 KEY	
			PRIMARY DIAL POSITION	ALTERNATE DIAL POSITION	PRIMARY DIAL POSITION	ALTERNATE DIAL POSITION
TOYOTA						

4Runner	Dot chip	2003-2010	1	3	5	7
4Runner	G chip	2010-2020	3	1	7	5
Avalon	Dot chip	2005-2012	1	3	5	7
Camry	Dot chip	2004-2011	1	3	5	7
Camry	G chip	2010-2014	3	1	7	5
Camry	H chip	2014-2018	3	1	7	5
Corolla	Dot chip	2005-2010	1	3	5	7
Corolla	G chip	2010-2013	3	1	7	5
Corolla	H chip	2014-2019	3	1	7	5
FJ Cruiser	Dot chip	2008-2009	1	3	5	7
FJ Cruiser	G chip	2010-2014	3	1	7	5
Highlander	Dot chip	2004-2010	1	3	5	7
Highlander	G chip	2010-2013	3	1	7	5
Highlander	H chip	2014-2019	3	1	7	5
Solara	Dot chip	2004-2008	1	3	5	7
Tacoma	Dot chip	2005-2009	1	3	5	7
Tacoma	G chip	2010-2015	3	1	7	5
Tacoma	H chip	2016-2020	3	1	7	5
Tundra	Dot chip	2007-2009	1	3	5	7
Tundra	G chip	2010-2017	3	1	7	5
Tundra	H chip	2017-2019	3	1	7	5
Venza	Dot chip	2009-2010	1	3	5	7
Venza	G chip	2010-2015	3	1	7	5
Yaris	Dot chip	2007-2013	1	3	5	7
Yaris	G chip	2012-2016	3	1	7	5
Yaris	H chip	2016-2018	3	1	7	5
PONTIAC						
Vibe	Dot chip	2008-2010	1	3	5	7
SCION						
tC	Dot chip	2005-2010	1	3	5	7
tC	G chip	2011-2015	3	1	7	5

BEFORE YOU BEGIN

Instructions have timing requirements. If you wait too long between steps, your vehicle's computer may time out, requiring you to start over. Once you begin the pairing procedure, move at a quick and even pace.

1. Find your vehicle's make, model, and year in the Vehicle compatibility in above. Turn the dial on the EZ Installer to the position listed for your vehicle's make, model, year and the pairing process you are performing.
 - a. NOTE: If more than one dial position exists for your vehicle, try the PRIMARY dial position first. If you are unable to successfully pair the key, try the ALTERNATE dial position listed for your vehicle.
2. One of the pairing steps (Step 3 in all flow diagram) requires you to turn the inserted key to Ignition ON/ RUN position as shown in the figure below. This is the position before starting the car. (If there are no markings, turn the key clockwise and stop just short of starting the engine)
3. Enter the vehicle and close all doors.



TOYOTA IGNITION POSITIONS

4. Keep original/already paired key and a new key with cut-blade with you.
5. Proceed with the vehicle in PARK and the engine OFF.
6. Make sure to locate your vehicle's OBD port/diagnostic connector before you start. (It can be found in your owner's manual). It is generally located under the dash.
7. Remove the security label from the EZ Installer.

KEY PAIRING PROCESS: PAIR NEW KEY

NOTE: Some older vehicles might not require pairing a new key. Try starting the vehicle without completing this process. If the vehicle starts and runs for 10 seconds, you do not need to pair the device. If the vehicle does not start or does not keep running, start at step 1 below to pair the new key.

1. Ensure the cable is plugged into the OBD port and any keys are removed from the ignition.
2. Select position 1 for "dot" blades or position 3 for "G" or "H" blades on the EZ Installer.
3. Insert a working master key and turn to the "on" position.
4. Press and release the button on EZ Installer and you will hear a beep.
5. After 30 seconds, the EZ Installer will beep twice. You will then have 12 seconds to complete step 6.
6. Remove the key and insert the new key into the ignition, do not turn the key. Press and release the button on EZ Installer.
7. After 60 seconds, the EZ Installer will quickly beep three different pitches.
8. **NOTE:** If you missed hitting the button in time, or at all, the EZ Installer will start beeping repeatedly. Unplug the device, remove the key, and start the process back at step 1. If you do not hear any sound, you have started the pairing process. Continue below.
9. Start the car to test the new key.

NOTE: Error beeps are a pattern of 3 / 4 or 5 distinct beeps at 1-sec intervals depending error codes. This pattern will get played four times and then continue with faster beeps after that. Refer to the Frequently Asked Questions section for more information about error beeps.

KEY PAIRING PROCESS: ERASE ALL BUT 1 EXISTING KEY

NOTE: This process is only necessary if you received the maximum number of keys error during the PAIR NEW KEY process. Once you have completed this process, go back to KEY PAIRING PROCESS: PAIR NEW KEY.

1. Ensure the cable is plugged into the OBD port and any keys are removed from the ignition.
2. Select position 5 for “dot” blades or position 7 for “G” or “H” blades on the EZ Installer.
3. Insert the working master key and turn to the “on” position.
4. Press and release the button on EZ Installer and you will hear a beep.
5. After 30 seconds, the EZ Installer will beep twice. You will then have 12 seconds to complete step 6.
6. Remove the key and insert the same key, do not turn the key. Press and release the button on EZ Installer.
7. After 60 seconds, the EZ Installer will quickly beep three different pitches.

NOTE: If you missed hitting the button in time, or at all, the EZ Installer will start beeping repeatedly.

Unplug the device, remove the key, and start the process back at step 1. If you do not hear any sound, you have started the pairing process. Continue below.

8. Start the car to test the new key.

NOTE: Error beeps are a pattern of 3 / 4 or 5 distinct beeps at 1-second intervals depending error codes. This pattern will get played four times and then continue with faster beeps after that. Refer to the Frequently Asked Questions section for more information about error beeps.

FREQUENTLY ASKED QUESTIONS

The EZ Installer beeps 5 times after pushing the button to initiate the pairing process and will not pair the new key.

Your vehicle allows a maximum of 5 paired keys. If the vehicle already has 5 keys paired to it, a new key cannot be paired. If the EZ Installer beeps 5 times early in the pairing process, this indicates that the maximum number of keys have been paired. Perform both the ERASE KEY and ERASE REMOTE steps. Then, try the KEY PAIRING and REMOTE PAIRING processes again. Gray colored valet keys should be paired before black master keys or remotes.

Can I use the same EZ Installer on other vehicles?

The EZ Installer sounds 3, 4, or 5 beeps at 1 second intervals 3 times then beeps continuously.

When problems occur during the pairing process, EZ Installer will beep an error code, followed by continuous faster beeps. The number of error beeps correspond to specific error codes, explained below.

- Three distinct beeps at 1 second intervals indicate the device has already been used on another vehicle. The EZ Installer can only pair Simple Keys to one vehicle. The EZ Installer will be locked to the first vehicle it is used on. You may add more keys to the same vehicle again as needed, but it will not work on different vehicles.
- Four distinct beeps at 1 second intervals indicate that the incorrect dial position was selected on the EZ Installer. Carefully read the instructions and refer to the vehicle compatibility on pages 4-11.
- Five distinct beeps at 1-second intervals indicate that the maximum number of keys have been paired to your vehicle. Your vehicle allows a maximum of 5 paired keys. If the vehicle already has 5 paired keys, a new key cannot be paired. Perform the ERASE ALL BUT 1 EXISTING KEY process and then attempt the PAIR NEW KEY process again. Gray valet keys should be paired before black master keys.

The new key won't pair to my car.

If the EZ Installer doesn't pair the key to your car, most likely an incorrect dial position was used. In this case, the EZ Installer will beep continuously after you press the pairing button. Check the compatibility section on pages 4-11 to confirm the correct dial position for your make, model, year, and transponder chip of your original key. If an alternate dial position(s) is listed for your vehicle, unplug the EZ Installer, turn the knob to the alternate position, and try pairing again. If the key still won't pair, please contact customer service at 888-598-8910.

The EZ Installer was unplugged during the pairing process.

The EZ Installer must remain plugged into the on-board diagnostic (OBD) port until pairing is complete. If the EZ Installer becomes unplugged during the pairing process, turn the ignition to the OFF position, remove the key, and begin the pairing process again.

The vehicle won't start with the new key or old keys after attempting to pair.

Please call Car Keys Express customer service at 888-598-8910.

HELP


For help or assistance, please contact technical support at: 888-598-8910.

OTHER KEYS





Visit CarKeysExpress.com to find a variety of award-winning products, like Universal Car Keys, Universal Car Remotes, and OEM keys and remotes.



Documents / Resources

	Car Keys Express TYPKA-7010-0 Transponder Replacement Keys [pdf] User Guide TYPKA-7010-0 Transponder Replacement Keys, TYPKA-7010-0, Transponder Replacement Keys, Replacement Keys
---	--

References

-  [Car Keys Express - Discount Key Replacement](#)
-  [Simple Key](#)
-  [Car Keys Express - Discount Key Replacement](#)
-  [Simple Key - Car Keys Express](#)

