

# CANYON Stylish Multimedia Wireless Keyboard SET-W3 User Guide

[Home](#) » [CANYON](#) » CANYON Stylish Multimedia Wireless Keyboard SET-W3 User Guide 

## Contents

- [1 CANYON Stylish Multimedia Wireless Keyboard SET-W3](#)
- [2 Features](#)
- [3 Package Contents](#)
- [4 Installing the Battery for mouse](#)
- [5 Installing the Battery for keyboard](#)
- [6 SAFETY INSTRUCTIONS](#)
- [7 Troubleshooting](#)
- [8 Warranty](#)
- [9 Documents / Resources](#)
  - [9.1 References](#)
- [10 Related Posts](#)



**CANYON Stylish Multimedia Wireless Keyboard SET-W3**



## Features

### KEYBOARD

Connectivity: Wireless

Number of keys: 105, 12 Hot Keys

Keys Type: Chocolate Keycap Design, membrane

### MOUSE

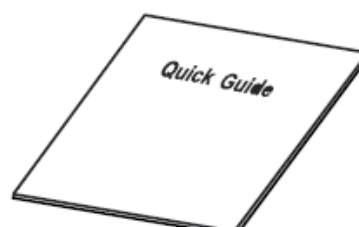
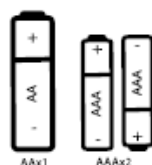
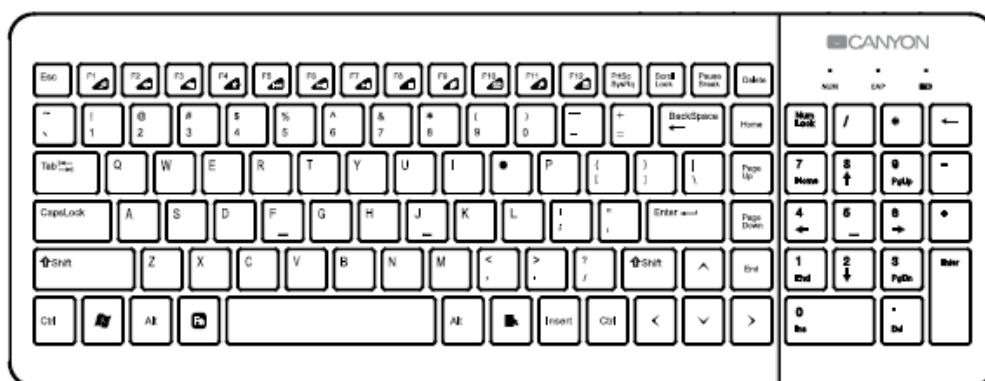
Pointing Device Technology: Optical

DPI: 800/1200/1600 adjustable mouse

Compatible with Microsoft Windows XP, Vista, 8, 7

Included Accessories: One receiver for both devices, batteries

## Package Contents

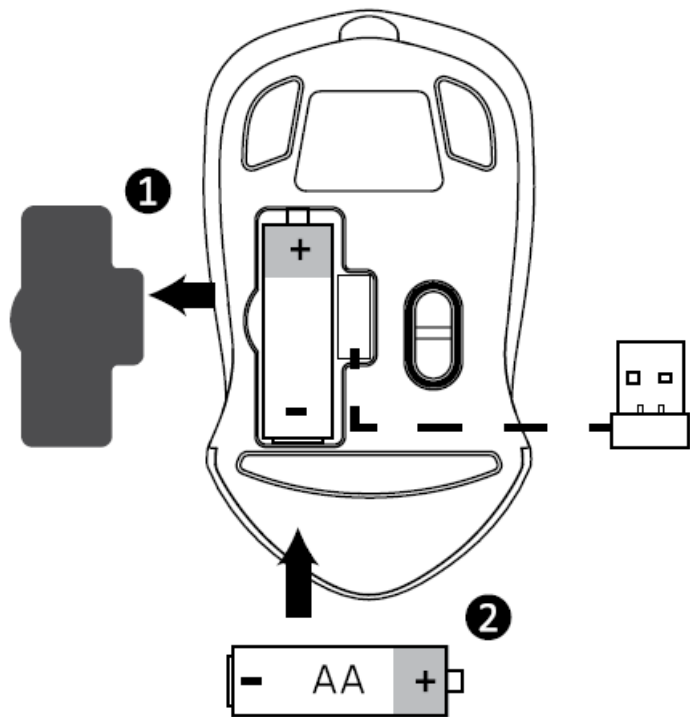


Package contents	Connection
Keyboard Mouse USB receiver Batteries 3 pcs, AA type User manual	<div>1. Open the battery compartment. Insert AAA batteries into the mouse. Remove the USB receiver.</div> <div>2. Open the battery compartment. Insert AA batteries into the keyboard. Remove the USB receiver. Led indicator will alert if the battery is low.</div> <div>3. Connect USB receiver to computer, namely free USB port. Driver not required.</div> <div>4. By scrolling the mouse wheel, you can change the DPI value.</div>

Hot keys function:

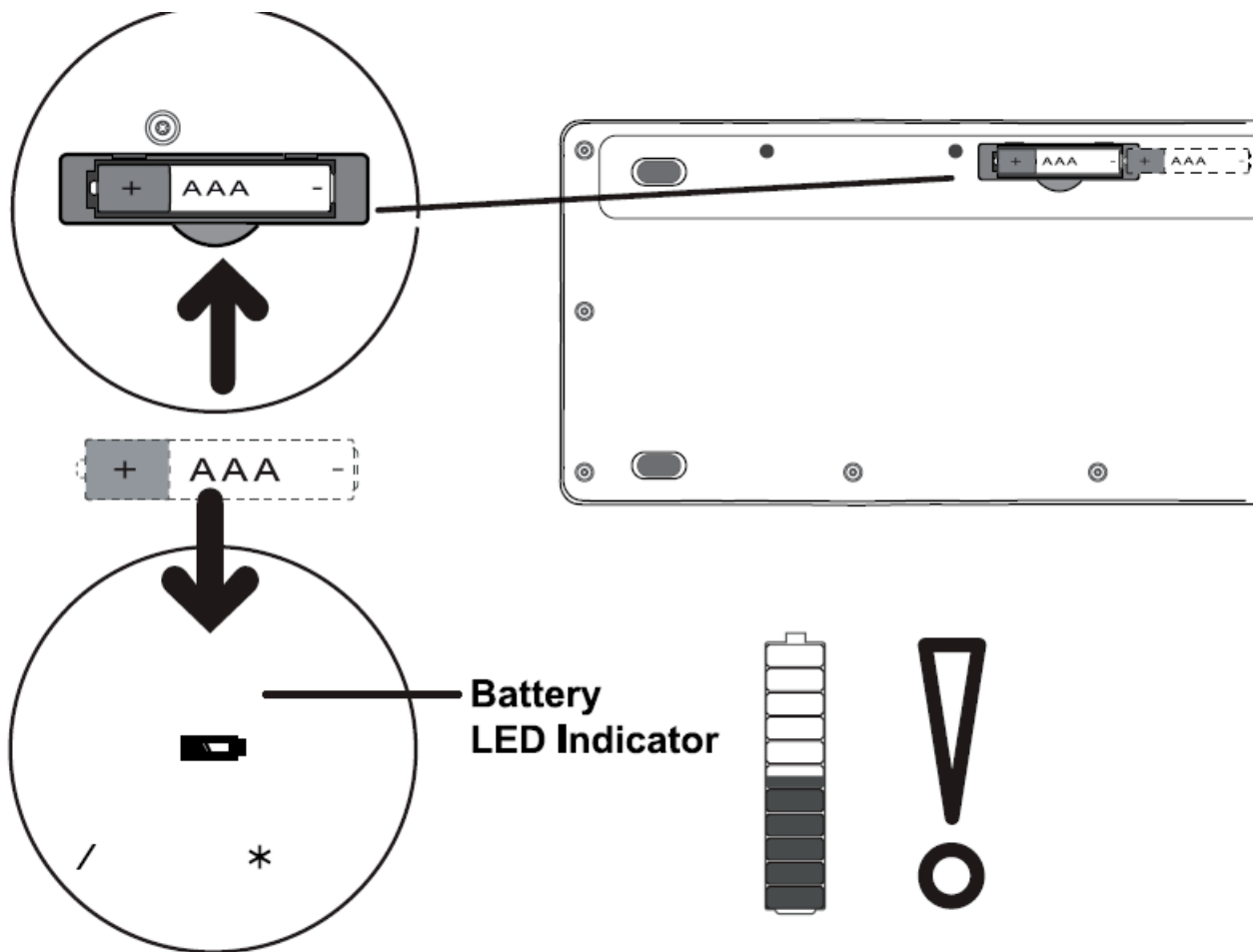
	Multimedia player	Starts Multimedia player
	Volume down	Decreases the computer's sound volume by a big wheel

Installing the Battery for mouse



	Volume up	Increases the computer's sound volume by a big wheel				
	Mute	Turn off the computer sound				
	Previous track	Switches to the previous media track <b>(FN+F5)</b>				
	Next track	Switches to the next media track <b>(FN+F6)</b>				
	Play/Pause	Switched playing and pausing media. Once paused, press this button again to resume play. <b>(FN+F7)</b>				
	Stop	Stops playing the media (FN+F8) <b>(FN+F8)</b>				
	Internet	Start the default Web browser or go to the Home Web page <b>(FN+F9)</b>				
	E-mail	Starts the <b>(FN+F10)</b>	default	email	program	(FN+F10)
	Search	Search menu				
	Calculator	Starts Microsoft Calculator				

## Installing the Battery for keyboard



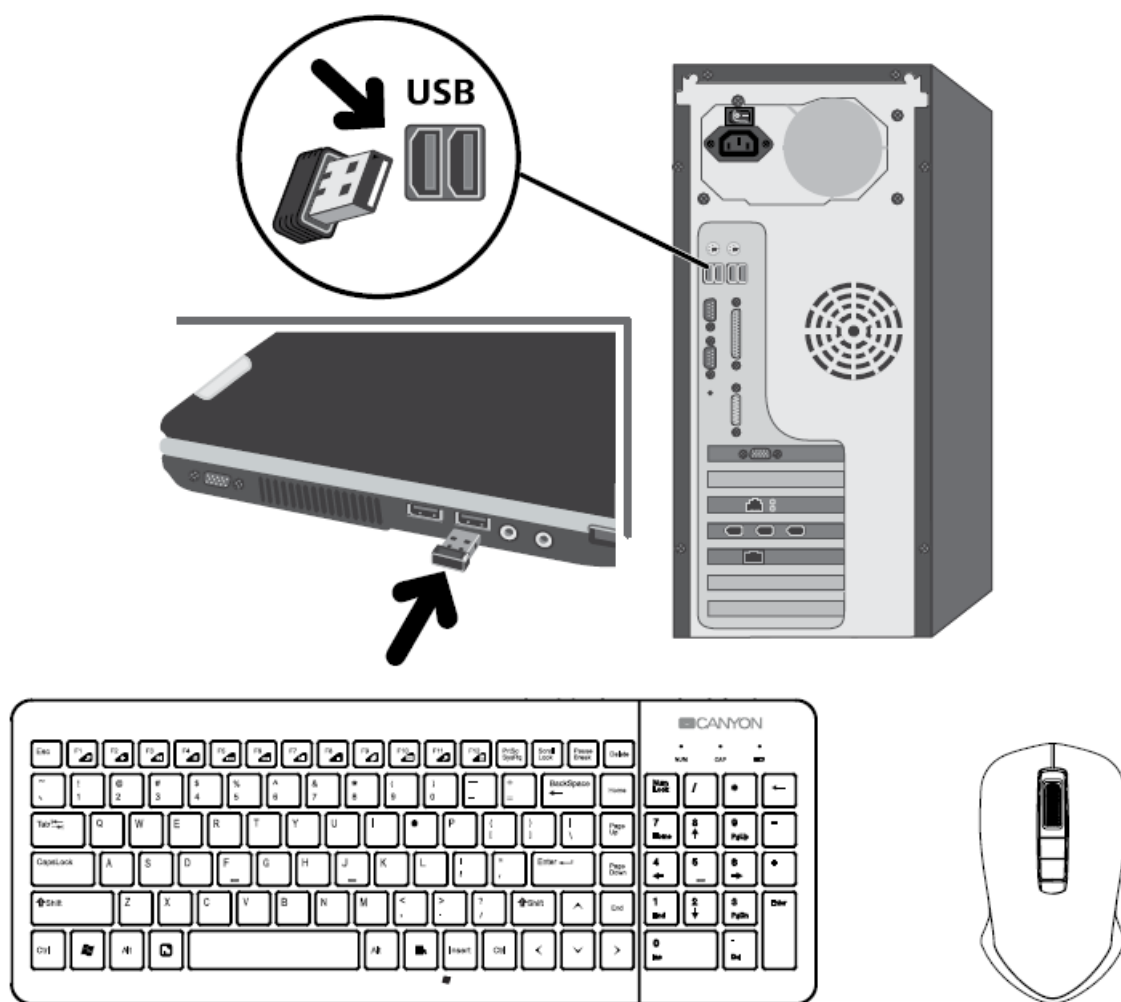
## SAFETY INSTRUCTIONS

Read carefully and follow all instructions before using this product.

1. Do not expose the mouse to excessive moisture, water or dust. Do not install in rooms with high humidity and dust level.
2. Do not expose the mouse to heat: do not place it close to heating appliances, and do not expose it to direct sun rays.
3. The product shall be connected to the power supply source of the type indicated in the operation manual only.
4. Never spray liquid detergents. Use only dry clothes for device cleaning.

**WARNING:** It is forbidden to dismantle the device. Attempt to repair this device is not recommended and leads to cancellation of the warranty.

### Inserting the Nano Receiver



## Troubleshooting

Problem	Solution
1. The keyboard does not work properly	<p>1.1 It is possible that one of the keys is “fused”. Keypad faults can be caused by a technological defect in the keyboard, as well as a from debris or water in the keypad.</p> <p>It's not recommended to perform self-cleaning of the keyboard.</p>
2. Keyboard doesn't work	<p>2.1 Low battery power. To test, insert new batteries of the specified type.</p> <p>2.2 Absence of signal from the transmitter installed in the USB port of the computer. Check the receiver, connecting it to another USB port. Remove the device from the system and install it again.</p>

If the actions from the above list do not contribute to problem solving, please contact the support team at Canyon:  
<http://canyon.eu/ask-your-question>

## Warranty

For the detailed information regarding warranty terms, please refer to: <http://canyon.eu/warranty-terms/>

The warranty period starts from the day of the product purchase from Canyon authorized Seller. The date of purchase is the date specified on your sales receipt or on the waybill. During the warranty period, repair, replacement or refund for the purchase shall be performed at the discretion of Canyon. In order to obtain warranty service, the goods must be returned to the Seller at the place of purchase together with proof of purchase (receipt or bill of lading).


2 years warranty from the date of purchase by the consumer. The service life is 2 years. Additional information about the use and warranty is available at <https://canyon.eu/warranty-terms/>

Manufacturer: Asbisc Enterprises PLC, 43, Kolonakiou Street, Diamond Court 4103 Ayios Athanasios  
<http://canyon.eu>

[www.canyon.eu](http://www.canyon.eu)



## Documents / Resources

	<a href="#">CANYON Stylis Multimedia Wireless Keyboard SET-W3</a> [pdf] User Guide Stylis, Multimedia, Wireless, SET-W3, CANYON
--	--

## References

- [Y\\_Canyon](#)
- [Y\\_Canyon](#)
- [Y\\_Canyon](#)
- [Y\\_Canyon](#)
- [Y\\_Certificates](#)
- [Y\\_Limited warranty statement - Canyon](#)
- [Y\\_Canyon](#)
- [Y\\_Garantie produse - Canyon](#)
- [Y\\_Canyon](#)
- [Y\\_Canyon](#)
- [Y\\_Podmienky záruky - Canyon](#)
- [Y\\_A Korlátozott Játékszabályzat - Canyon](#)
- [Y\\_Canyon](#)
- [Y\\_certificates](#)
- [Y\\_Canyon](#)
- [Y\\_Limited warranty statement - Canyon](#)
- [Y\\_Canyon](#)
- [Y\\_Canyon](#)