



## CANYON GM-11 Puncher Gaming Mouse with 7 Programmable Buttons User Guide

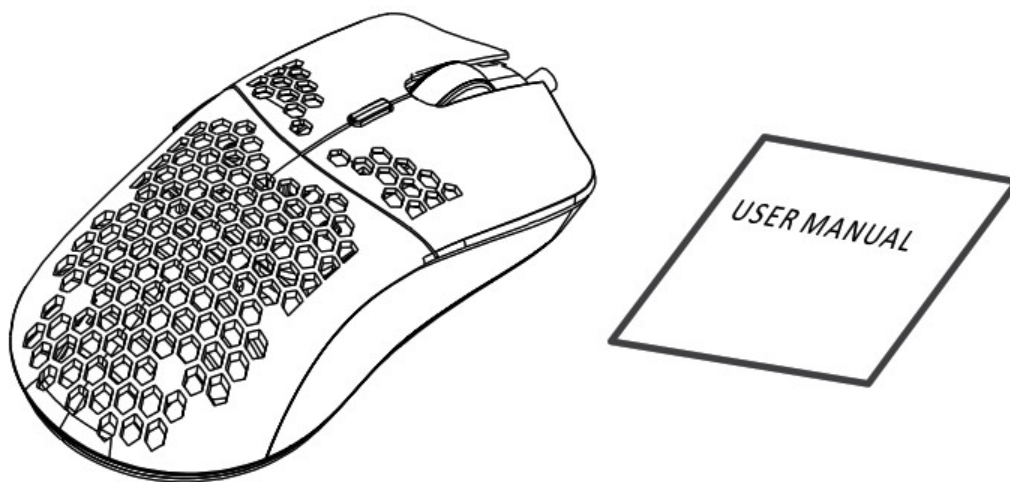
[Home](#) » [CANYON](#) » CANYON GM-11 Puncher Gaming Mouse with 7 Programmable Buttons User Guide 



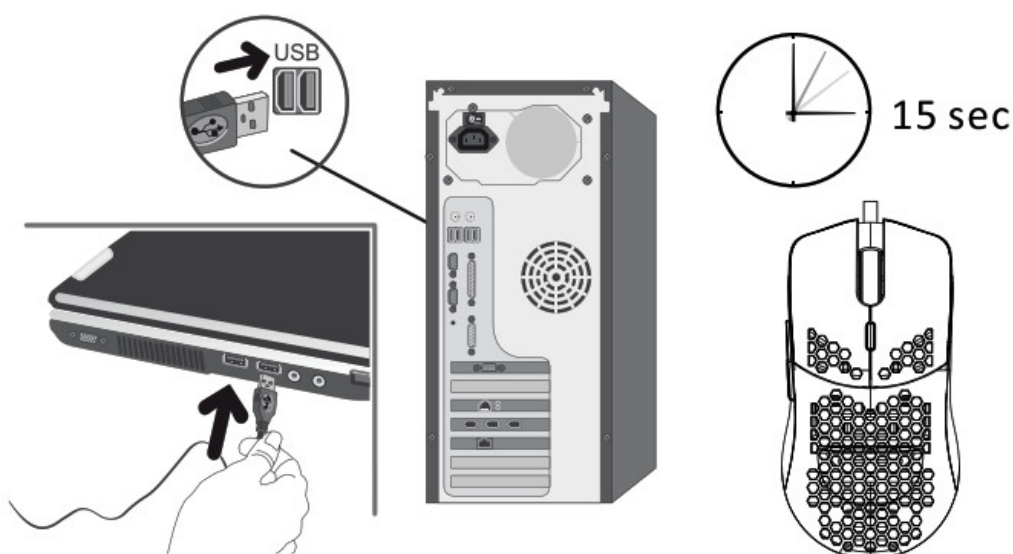
### Contents

- [1 Package contents](#)
- [2 Connection](#)
- [3 Available DPI settings](#)
- [4 Technical specifications](#)
- [5 SAFETY INSTRUCTIONS](#)
- [6 Warning](#)
- [7 Troubleshooting](#)
- [8 SUPPORT AND WARRANTY](#)
- [9 Documents / Resources](#)
  - [9.1 References](#)
- [10 Related Posts](#)

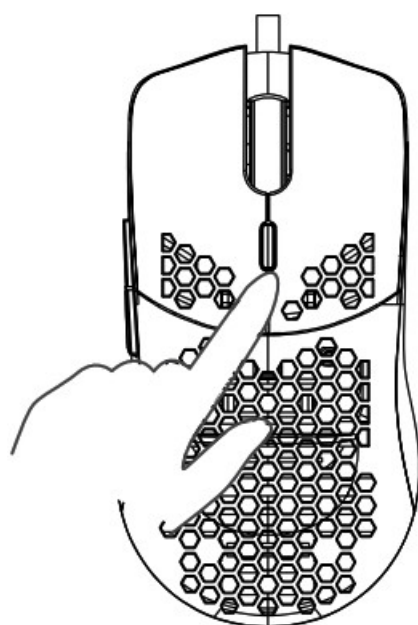
### Package contents



## Connection



## Available DPI settings



- 800 DPI
- 1600 DPI
- 2400 DPI
- 4200 DPI

## Technical specifications

- Pixart PAW3519 Sensor
- Adjustable DPI 800/1600/2400/4200
- 7 programmable buttons
- 6 modes of backlight effects
- RGB backlight
- USB ultra weave cable 1.65 m with a ferrite ring
- Additional software to set up the settings
- Polling rate: 125/250/500/1000Hz
- Macros assignments

Package contents (Figure 1):	Connection
Gaming mouse GM-11 User manual	For correct operation of the device, connect it to the USB port of a personal computer/laptop/all-in-one. After turning on the computer and installing the operating system standard drivers – the mouse will be ready for use

## SAFETY INSTRUCTIONS



Read carefully and follow all instructions before using this product.

1. Do not expose the mouse to excessive moisture, water or dust. Do not install in rooms with high humidity and dust level.
2. Do not expose the mouse to heat: do not place it close to heating appliances, and do not expose it to direct sun rays.
3. The product shall be connected to the power supply source of the type indicated in the operation manual only.
4. Clean the device with a dry cloth only.

## Warning

1. It is forbidden to dismantle the device. Attempting to repair this device is not recommended and leads to cancellation of the warranty.
2. For optimum performance, the device with batteries shall be kept at the temperature of 15 to 25 °C. Too high/low temperature leads to a reduction in the capacity and service life of the battery. Excessive heating/cooling may cause temporary non-operability of the device.
3. Do not destroy batteries by burning, they may explode.

## Troubleshooting

Problem	Solution
The mouse does not work	<ol style="list-style-type: none"> <li>1. Make sure the USB cable is plugged into the USB port.</li> <li>2. Try using the mouse on another USB port or another computer.</li> </ol>



All other products names and trademarks are the property of their respective owners.

## SUPPORT AND WARRANTY

To avoid conflict, please uninstall other mouse drivers before installing the driver for this mouse.

Do not disassemble your product, or expose it to liquid, humidity, moisture or temperatures out of the specified operating range.

If your product is exposed to out-of-range temperatures, unplug it and wait until its temperature returns to the normal operating range.


This product comes with 24 months limited warranty.

For more information about usage and warranty, please refer to <http://canyon.eu/ask-your-question/>

Download a full version of the manual by the link: <https://canyon.eu/drivers-and-manuals/>

Date of manufacture: (see at the package). Made in China.

## Documents / Resources

	<a href="#">CANYON GM-11 Puncher Gaming Mouse with 7 Programmable Buttons</a> [pdf] User Guide GM-11, Puncher Gaming Mouse with 7 Programmable Buttons, Gaming Mouse, Mouse, Punch er Gaming Mouse, 7 Programmable Buttons Gaming Mouse
---	---

## References

- [Y\\_ĐŸĐ¾Đ'Đ'ŃŠŃ€Đ¶Đ°Đ° - Canyon](#)
- [Y\\_Canyon](#)
- [Y\\_Canyon](#)
- [Y\\_Canyon](#)
- [Y\\_Certificates](#)
- [Y\\_Suport - Canyon](#)
- [Y\\_Canyon | ĐœĐ¾Đ±Đ\\_Đ»Ń€Đ½Ń\\_Đµ\\_Đ\\_ĐŸĐš-Đ°Đ°ŃĐµŃŃŃfĐ°Ń€Ń\\_](#)
- [Y\\_Canyon](#)
- [Y\\_Canyon](#)
- [Y\\_Canyon](#)
- [Y\\_Canyon](#)
- [Y\\_Podpora - Canyon](#)
- [Y\\_TĂMOGATĂS - Canyon](#)
- [Y\\_certificates](#)
- [Y\\_Đj\\_ĐµŃ€Ń\\_Đ\\_Ń\\_Đ\\_Đ°Đ°Ń\\_Đ\\_](#)

- [!\[\]\(83eb2aa26b610eb6a9dca7cf4702d681\_img.jpg\) Canyon | Mobile and Computer Accessories](#)
- [!\[\]\(94dfacbf937cdd7da4837a6fcd8fc785\_img.jpg\) Canyon](#)
- [!\[\]\(dae8c3c5fa7c80febd6526a5e8a853bf\_img.jpg\) Drivers and manuals - Canyon](#)
- [!\[\]\(8f38ab9775d1331a4e1fd6648d0a83f1\_img.jpg\) Canyon](#)
- [!\[\]\(5e48b3241d711ef916255d822ab3415f\_img.jpg\)  \$\mathbb{D}^{\circ}\mathbb{D}^{\circ}\mathbb{N}\mathbb{E}\mathbb{D}^{\circ}\mathbb{D}^{1/2}\mathbb{N},\mathbb{N}-\mathbb{D}^1\mathbb{D}^{1/2}\mathbb{N}-\mathbb{N}f\mathbb{D}^{1/4}\mathbb{D}^{3/4}\mathbb{D}^2\mathbb{D}\_-\$  - Canyon](#)

Manuals+.