



# CANYON CNE-CMSW2 Wireless optical mouse User Guide

[Home](#) » [CANYON](#) » CANYON CNE-CMSW2 Wireless optical mouse User Guide 

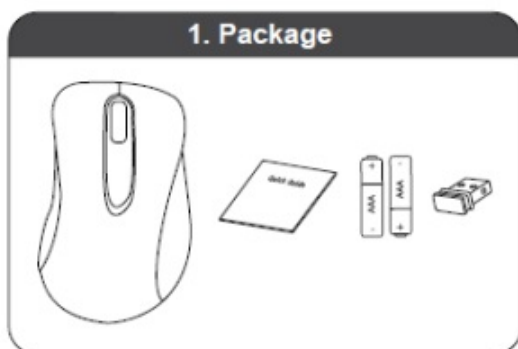
## Contents

- [1 CANYON CNE-CMSW2 Wireless optical mouse User Guide](#)
- [2 User manual. Wireless optical mouse](#)
  - [2.1 Specifications](#)
- [3 SAFETY INSTRUCTIONS](#)
- [4 Warning](#)
- [5 Troubleshooting](#)
- [6 WARRANTY](#)
- [7 Documents / Resources](#)
  - [7.1 References](#)
- [8 Related Posts](#)

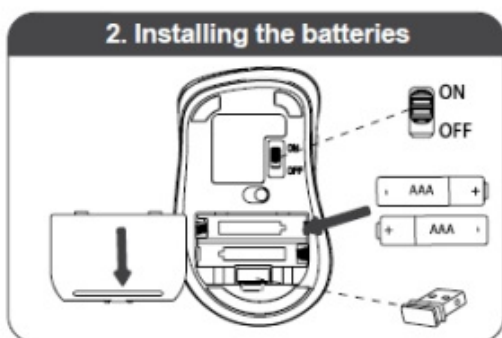
## CANYON CNE-CMSW2 Wireless optical mouse User Guide



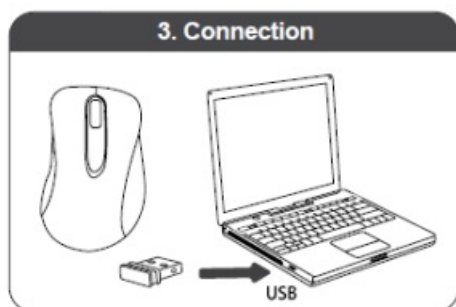
### 1. Package



### 2. Installing the batteries



### 3. Connection



Package contents (Figure 1):	Connection
<p>Wireless optical mouse</p> <p>USB receiver</p>	<p>1. Open the battery compartment.</p>
<p>Batteries 2 pcs, AAA type User manual</p>	<p>2. Insert AAA batteries into the mouse. Remove the USB receiver.</p>
	<p>3. Connect the USB receiver to any free computer USB port. Driver not required.</p>

	4. Turn on power to the mouse with the on / off button.
--	---

## **User manual. Wireless optical mouse**

### **Specifications**

Connectivity: wireless

Number of buttons: 3

Min./Max. resolution: 1200 DPI

Pointing Device Technology: optical

Battery Type: AAA

Required number of batteries: 2

Battery average run time: 6 months

Included accessories: USB receiver

### **SAFETY INSTRUCTIONS**

Read carefully and follow all instructions before using this product.

1. Do not expose the mouse to excessive moisture, water or dust. Do not install in rooms with high humidity and dust level.
2. Do not expose the mouse to heat: do not place it close to heating appliances, and do not expose it to direct sun rays.
3. The product shall be connected to the power supply source of the type indicated in the operation manual only.
4. Clean the device with dry cloth only.

### **Warning**

1. It is forbidden to dismantle the device. Attempt to repair this device is not recommended and leads to cancellation of the warranty.
2. For optimum performance the device with batteries shall be kept at the temperature 15 to 25 °C. Too high / low temperature leads to reduction in capacity and service life of the battery. Excessive heating/cooling may cause temporary non-operability of the device.
3. Do not destroy batteries by burning, they may explode.

### **Troubleshooting**


Problem	Solution
Mouse does not work	<p>1.1 Low battery power. To test, insert a new type of battery into the wireless mouse.</p> <p>1.2 Absence of signal from the transmitter installed in the USB port of the computer. Connect the receiver to another USB port. Подключите приемник к другому USB-порту.</p> <p>1.2.1 Remove the device from the system and install it again.</p>

If the actions from the above list do not contribute to problem solving,  
Canyon <http://canyon.eu/ask-your-question/> please contact the support team at  
Manufacturer: Asbisc Enterprises PLC, 43, Kolonakiou Street, Diamond  
Court 4103 Ayios Athanasios <http://canyon.eu>

## WARRANTY

The warranty period starts from the day of the product purchase from Canyon authorized Seller. The date of purchase is the date specified on your sales receipt or on the invoice. During the warranty period, repair, replacement or refund for the purchase shall be performed at the discretion of Canyon. In order to obtain warranty service, the goods must be returned to the Seller at the place of purchase together with proof of purchase (receipt or bill of landing). 2 years warranty from the date of purchase by the consumer. The service life is 2 years. Additional information about the use and warranty is available at <https://canyon.eu/warranty-terms/>

## Documents / Resources

	<a href="#">CANYON CNE-CMSW2 Wireless optical mouse</a> [pdf] User Guide CNE-CMSW2, Wireless optical mouse
---	---

## References

- [Y Canyon](#)
- [Y Canyon](#)
- [Y Canyon](#)
- [Y Canyon](#)
- [Y Certificates](#)
- [Y Canyon](#)
- [Y Canyon | DoeD<sup>3</sup>/<sub>4</sub>D±D<sub>2</sub>»ÑCED<sup>1</sup>/<sub>2</sub>Ñ·Dμ D<sub>2</sub> ĐŸĐš-Đ°Đ°ÑDμÑÑÑfĐ°Ñ€Ñ·](#)
- [Y Canyon](#)
- [Y Canyon](#)
- [Y certificates](#)
- [Y ĐıĐμÑ€Ñ·Đ<sub>2</sub>Ñ·Đ<sub>2</sub>Đ°Đ°Ñ·Đ<sub>2</sub>](#)
- [Y Canyon | Mobile and Computer Accessories](#)
- [Y Canyon](#)
- [Y Limited warranty statement - Canyon](#)
- [Y Podmienky zÃjruky - Canyon](#)
- [Y Canyon](#)
- [Y Đ°Đ°Ñ€Đ°Đ<sup>1</sup>/<sub>2</sub>Ñ·Ñ-Đ<sup>1</sup>/<sub>2</sub>Ñ- ÑfĐ<sup>1</sup>/<sub>4</sub>Đ<sup>3</sup>/<sub>4</sub>Đ<sup>2</sup>Đ<sub>2</sub> - Canyon](#)
- [Y Canyon](#)