



## Canon Multifunction Printer User Guide

[Home](#) » [Canon](#) » Canon Multifunction Printer User Guide 



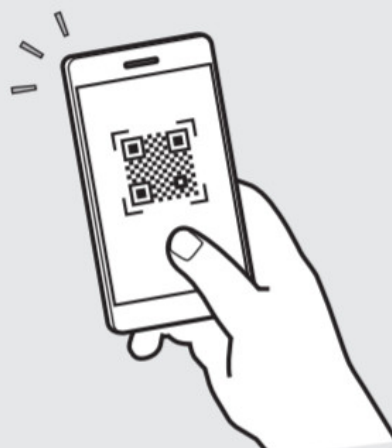
### MF83Cdw Setup Guide

- After finish reading, this guide, store it in a safe place for future reference.
- The information in this guide is subject to change without notice.

#### 1. Important Safety Instructions

Be sure to read these manuals before using the machine.

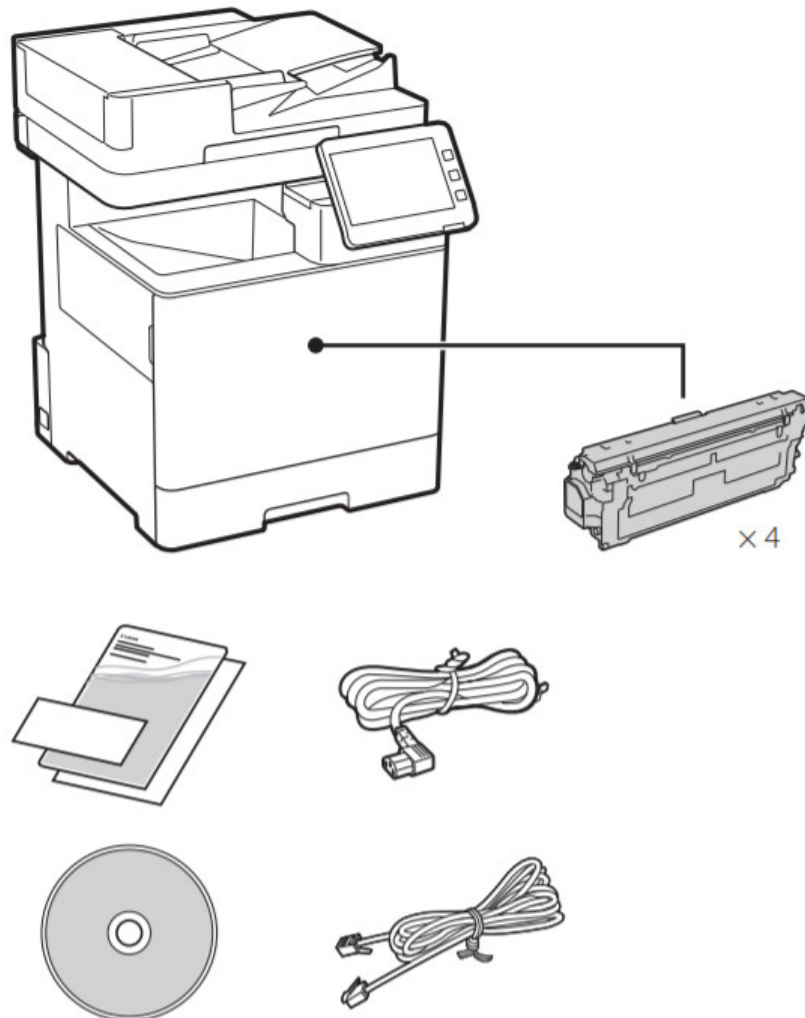
2. Setup Guide (this document)
3. User's Guide / FAQ



## Contents

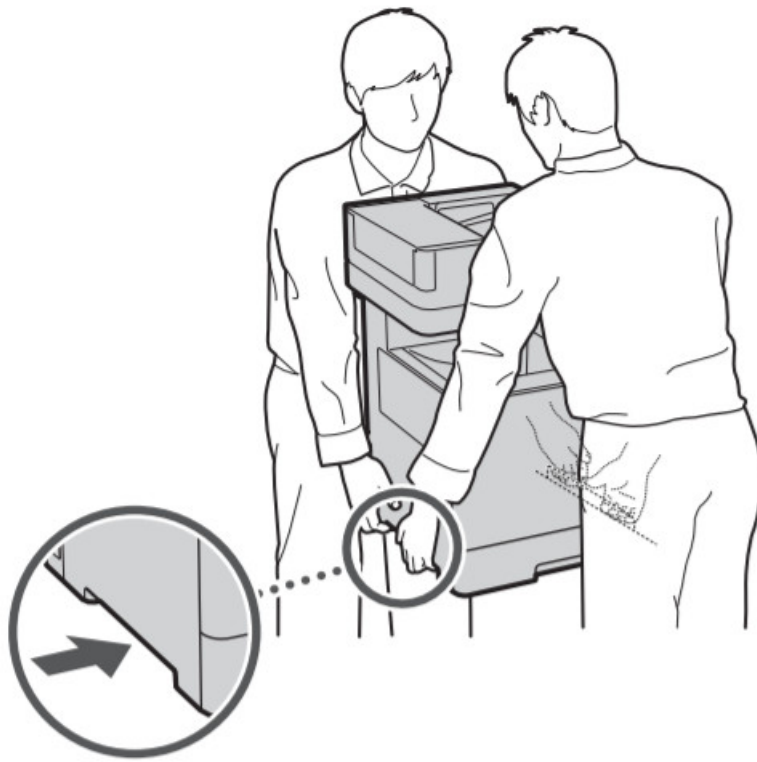
- 1 Checking the Items Included
- 2 Removing the Packing Material
- 3 Loading Paper
- 4 Installing the Optional Product
- 5 Connecting the Cords and Cables
- 6 Setting Up Using the Setup Guide
- 7 Installing the Software/ Drivers
- 8 Documents / Resources
  - 8.1 References
- 9 Related Posts

## Checking the Items Included



## Removing the Packing Material

1. Install the machine in the location where it will be used.



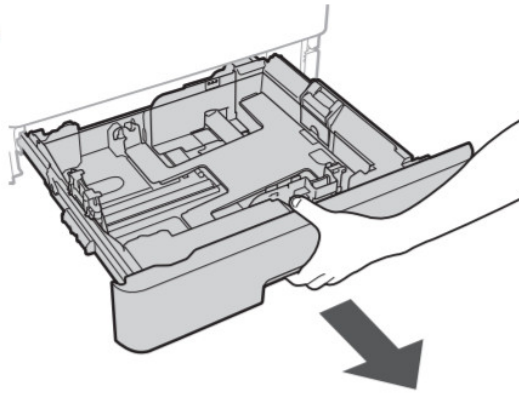
**2. Remove all the packing material.**



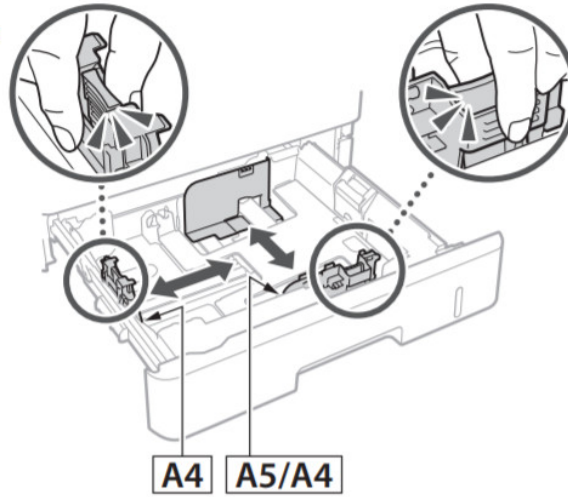
Remove all of the tape.

**Loading Paper**

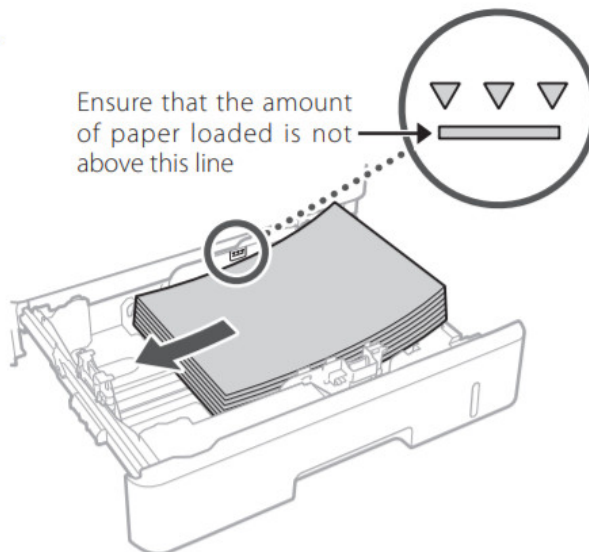
1.



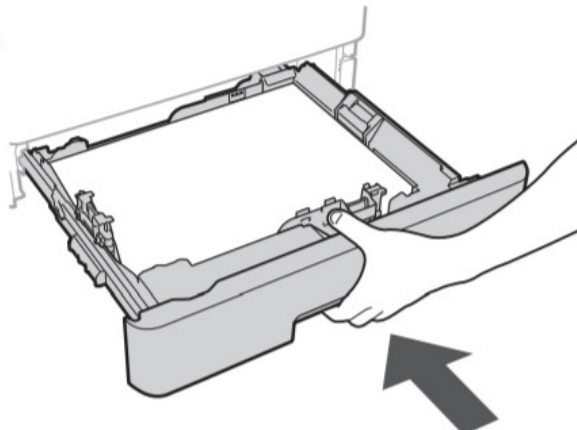
2.



3.



4.



## Installing the Optional Product

➡ if you are not using the optional product, proceed to step( **Connecting the Cords and Cables** 5

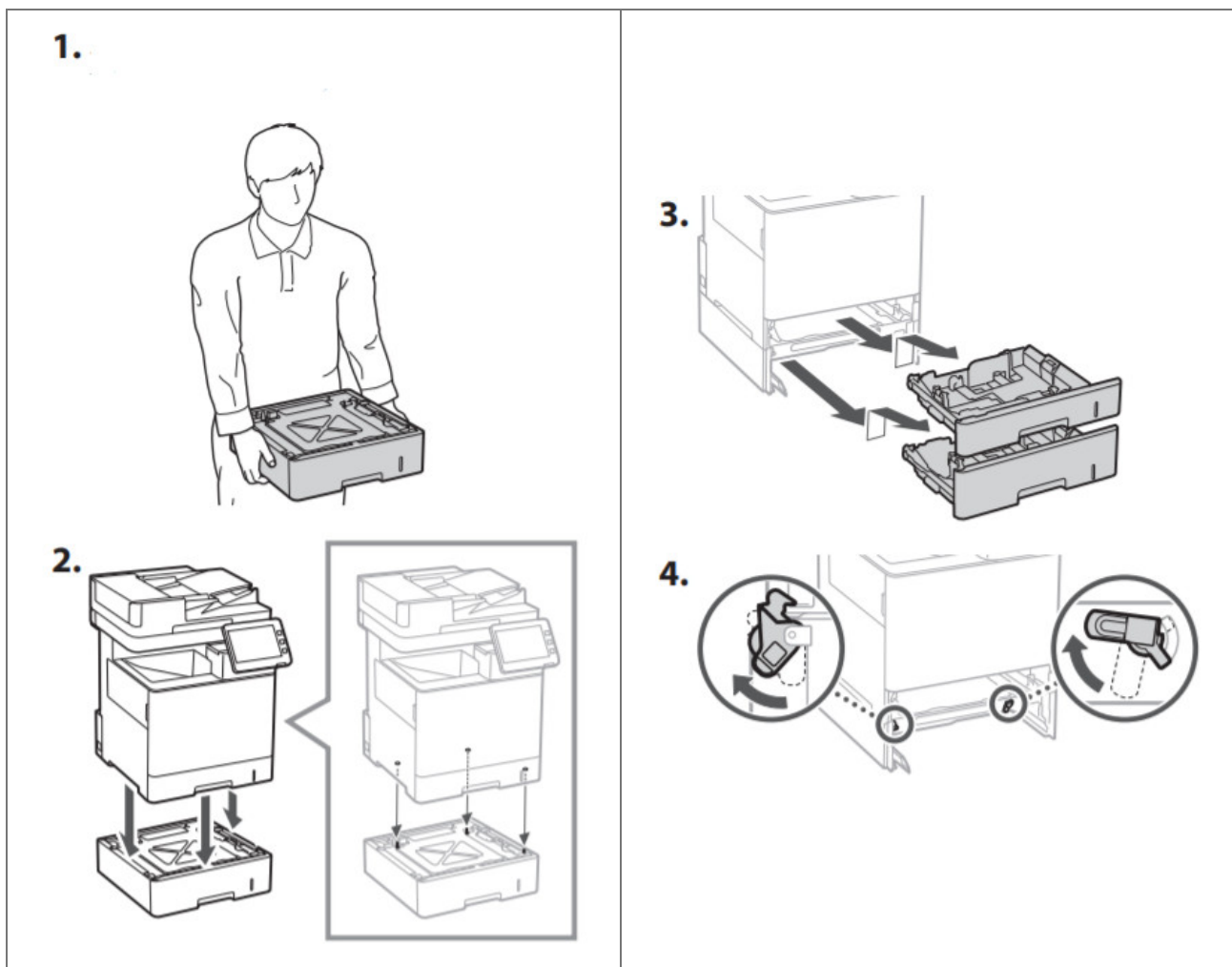
### Before Installing the Optional Product

When installing the optional product after the machine has been installed, perform the following before starting work:

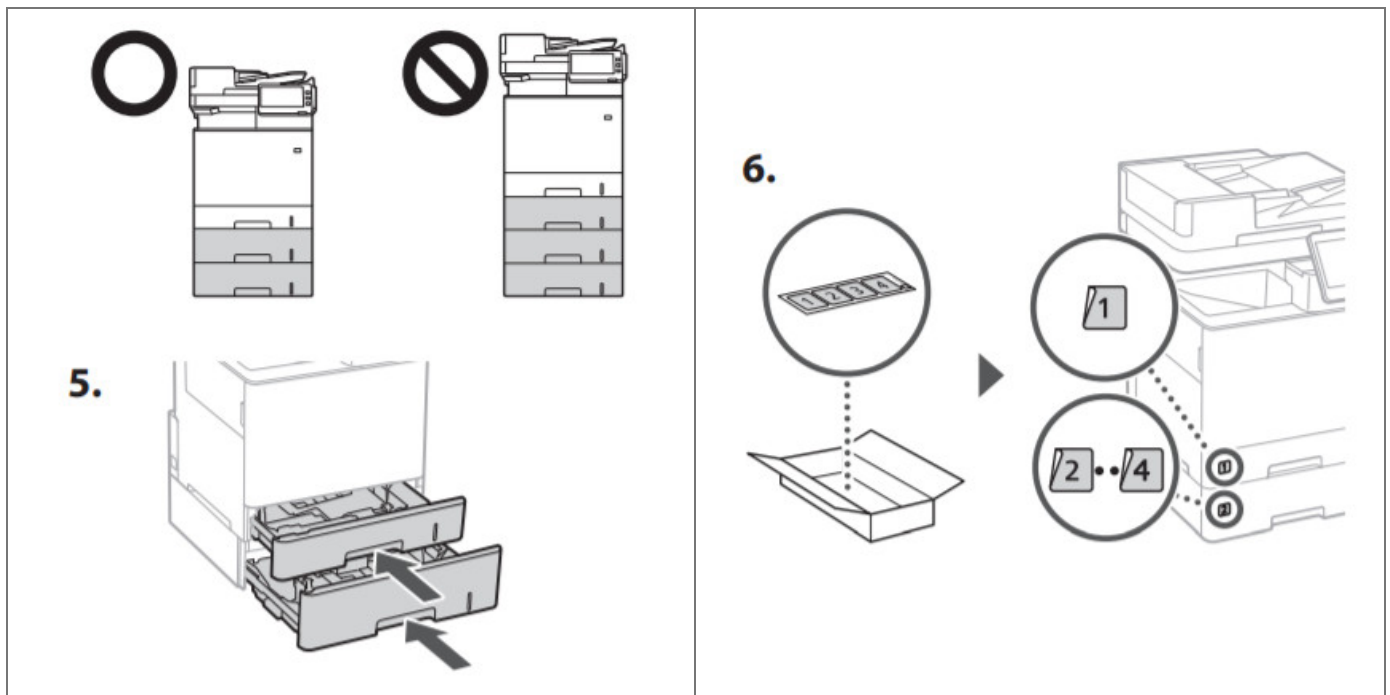
1. Shut down the machine and your computer.
2. Unplug the machine from the mains power outlet.
3. Disconnect all cords and cables from the machine.

### Paper Feeder/Cassette Pedestal

1. Install the paper feeder in the location where it will be used.



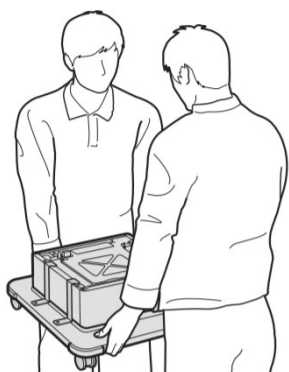
- You can stack up to two paper feeders.



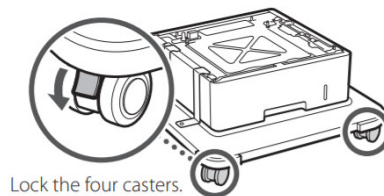
### When Using the Cassette Pedestal

1. Install the cassette pedestal in the location where it will be used.

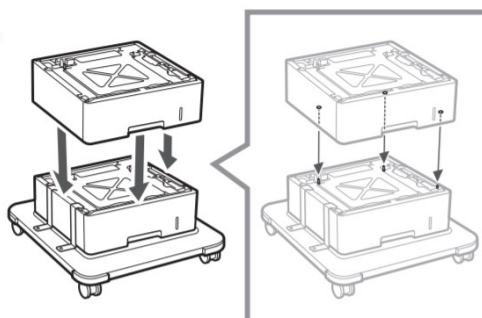
1.



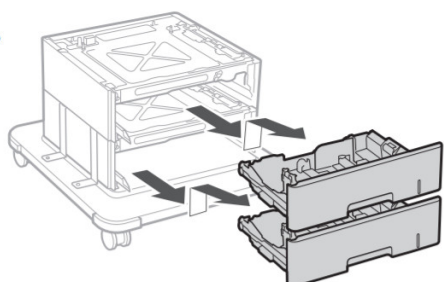
2.



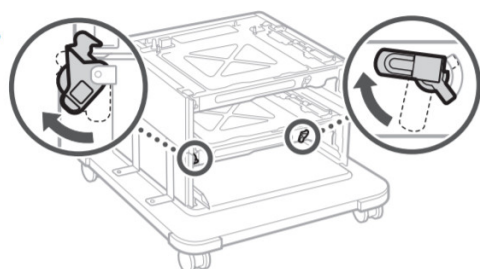
3.



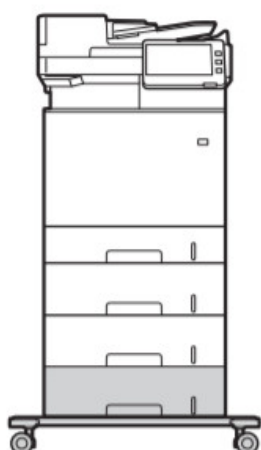
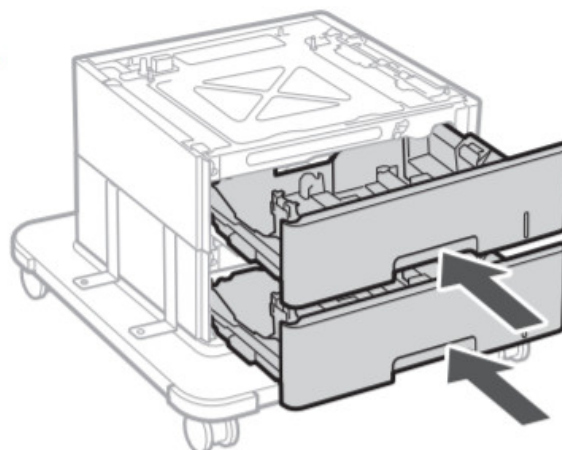
4.



5.



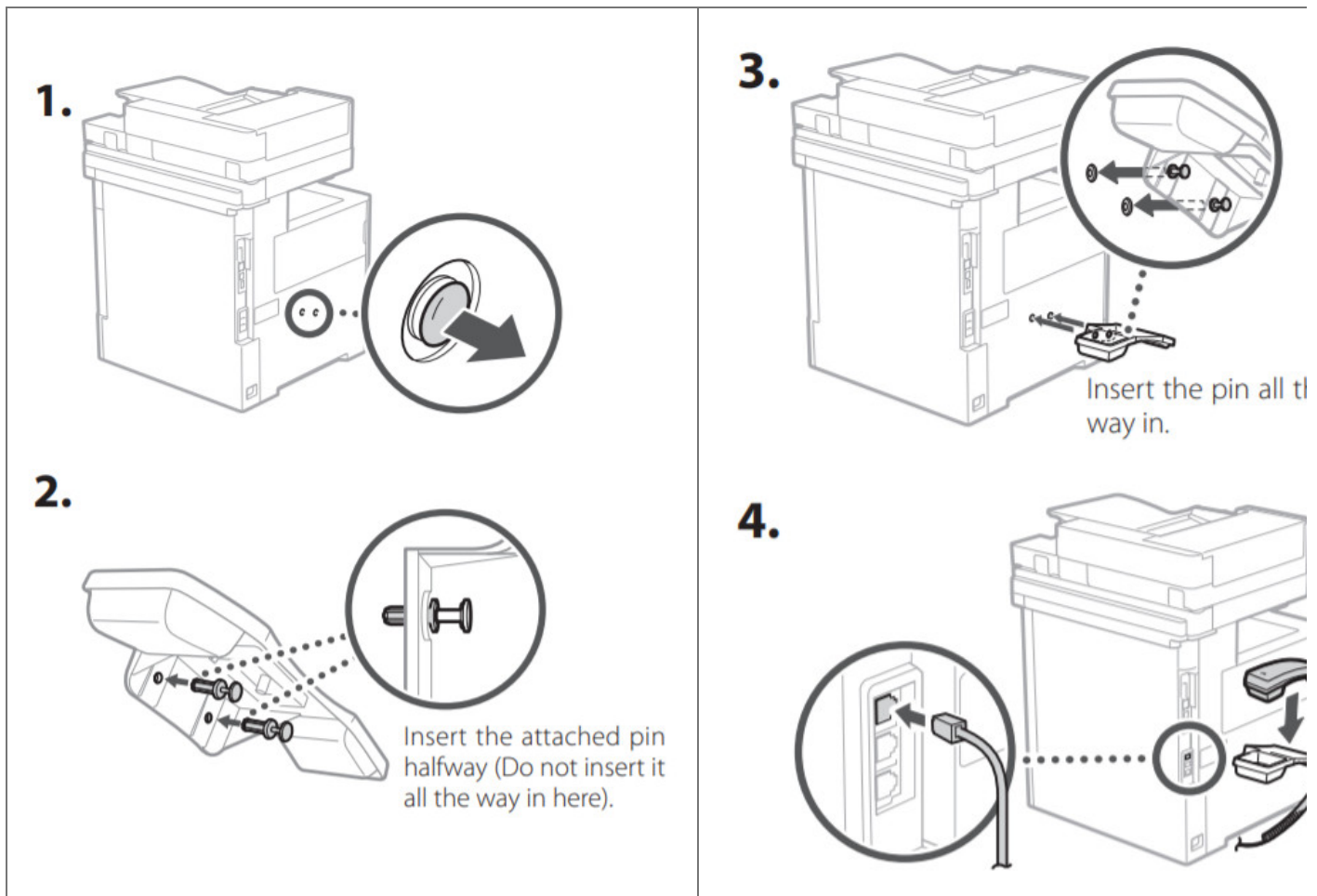
6.



- You can stack up to two paper feeders and a cassette pedestal with the machine.

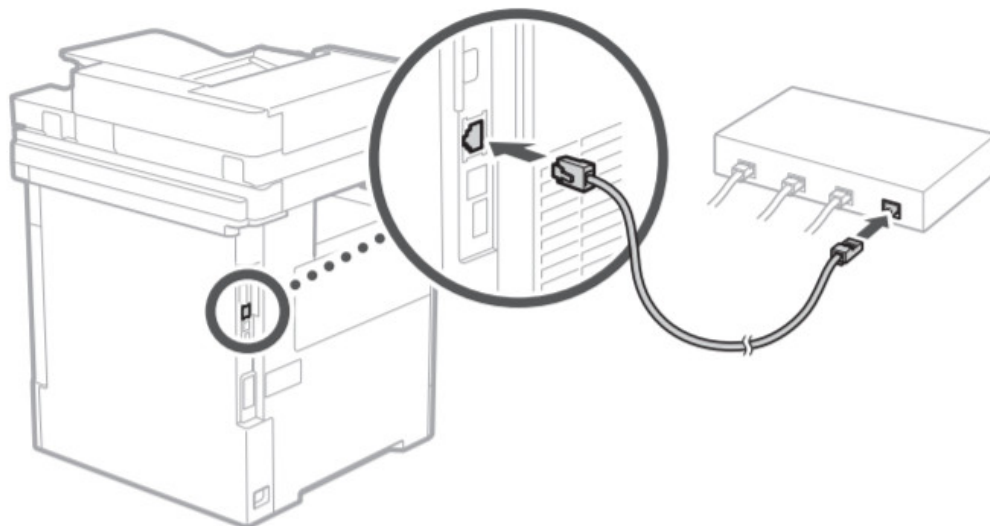
Handset





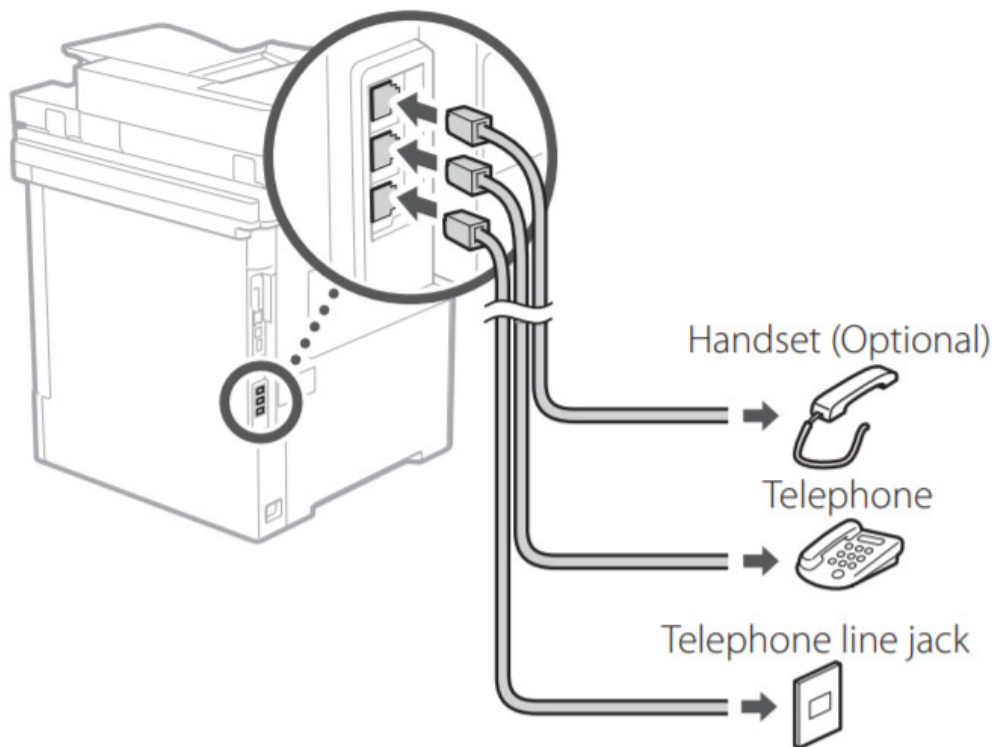
## Connecting the Cords and Cables

**1. To connect to a wired LAN, connect the machine to the router using a LAN cable.**



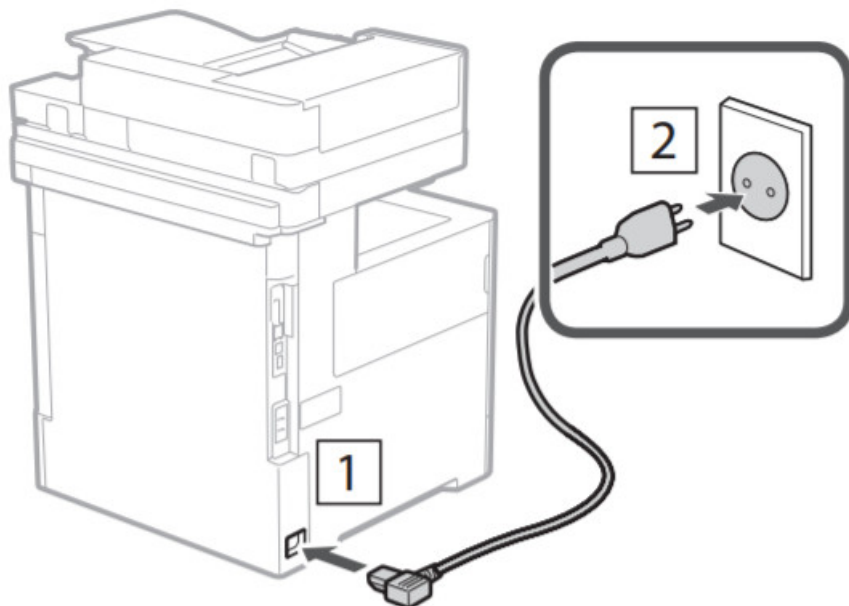
**2. To use the machine for faxes, connect it to the phone line using a modular cable.**





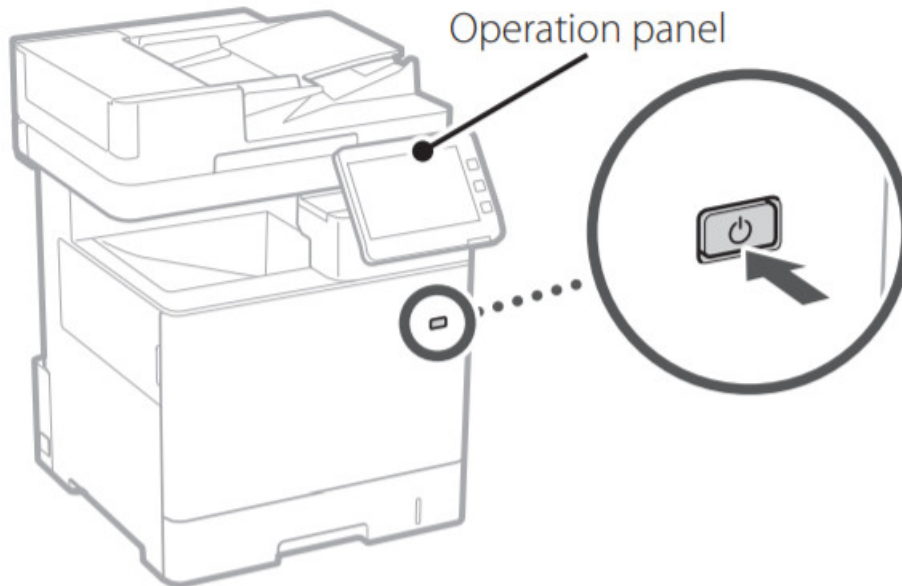
- Always check the line before connecting. Connecting to a dedicated line for business phones, etc. could cause a fault.

### 3. Connecting the Power Cord.



### Setting Up Using the Setup Guide

When you turn the machine on for the first time, the setup Guide starts up on the operation panel.



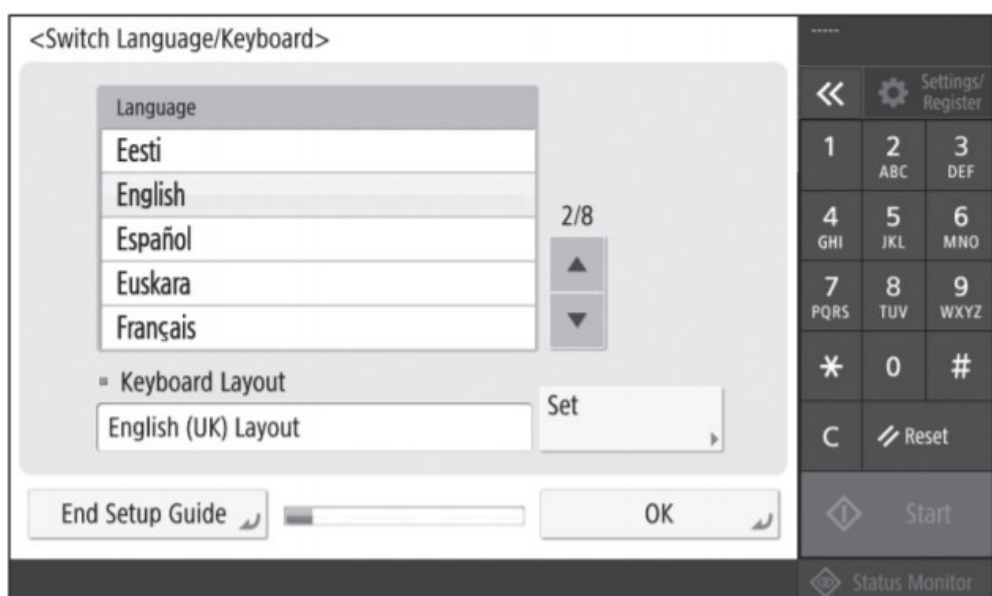
Scan the following QR code for information on using the Setup Guide.



<https://go.oip.manual.canon/?rid=Y3UBQVHy>

**What You Can Use the**

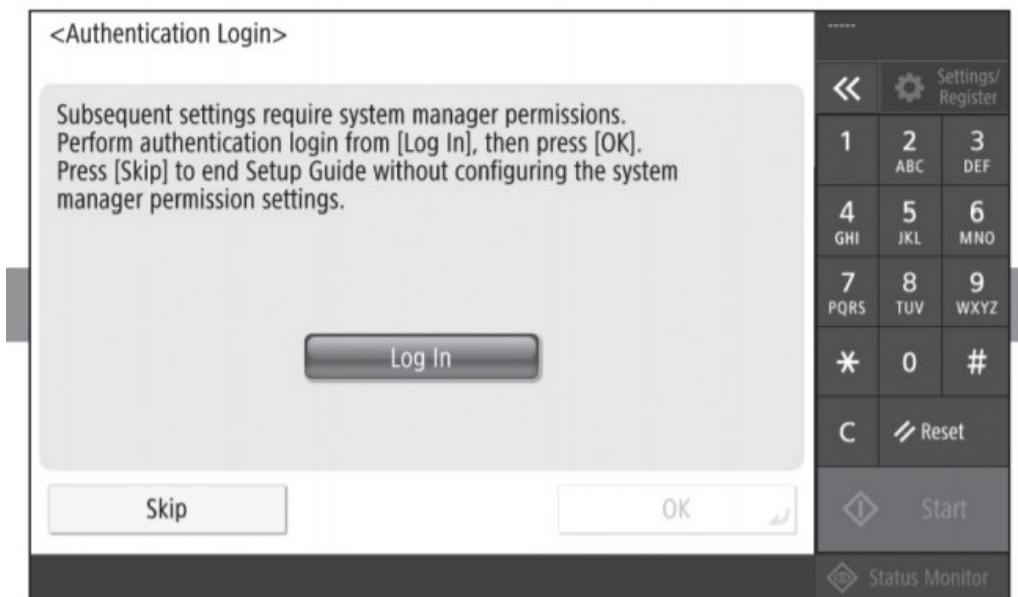
## **1 Specifying the Basic Settings**



Specify basic settings such as the screen display language and the type of paper used.

## Setup Guide For

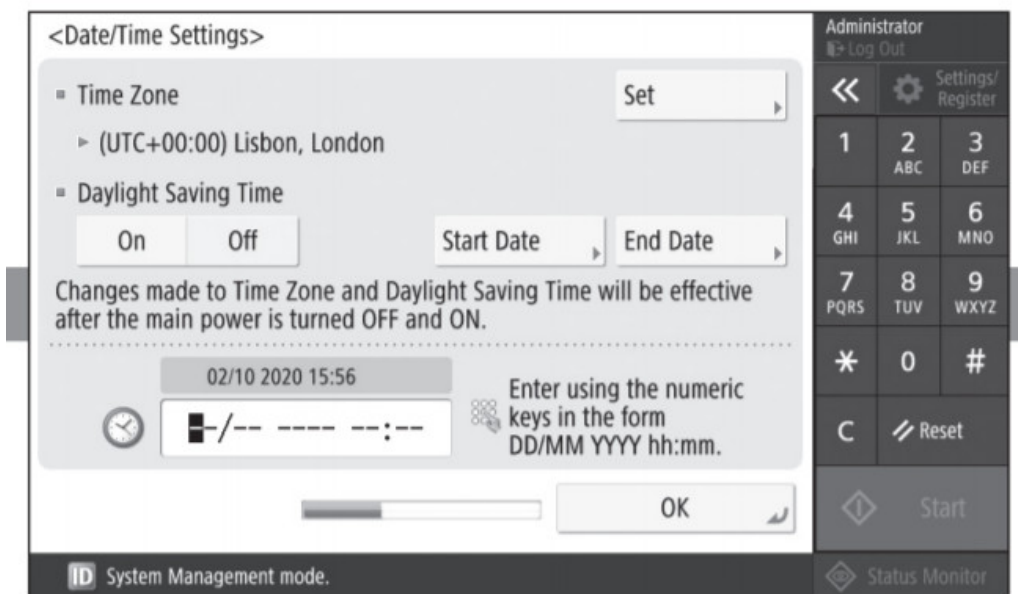
### 2 Specifying the Security Settings



Specify the administrator login and user authentication settings to improve the security of the machine.

The default administrator login is “Administrator” and the default password is “7654321”.

### 3 Setting the Date and Time



Set the machine's date and time.

### 4 Specifying the Network Settings

<Use IP Address>

■ Use IPv4

On

Off

■ Use IPv6

On

Off

Link-Local Address

Prefix Length

Could not retrieve.

(When On, addresses will be acquired next time the main power is ON.)

Back

Next

ID

System Management mode.

Administrator

Log Out

Settings/ Register

1 2 3

4 5 6

7 8 9

\* 0 #

C Reset

Start

Status Monitor

Specify the settings for connecting the machine to a network.

Select a wired LAN or wireless LAN and specify the IP address. Depending on your network environment, specify the DNS and proxy settings also.

## 5 Specifying the Fax Settings

<Register Unit Telephone Number>

Enter using the numeric keys. (Max 20 digits)

Space

+

Backspace

Next

ID

System Management mode.

Administrator

Log Out

Settings/ Register

1 2 3

4 5 6

7 8 9

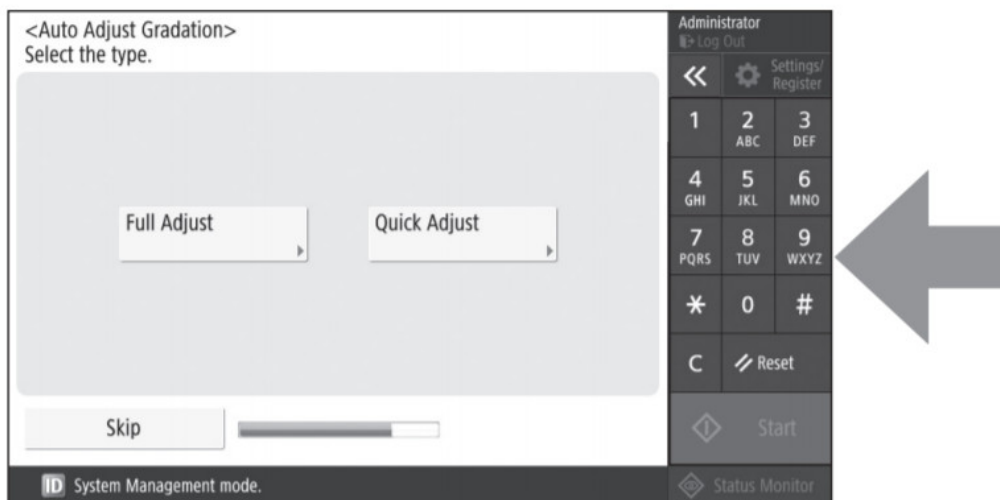
\* 0 #

C Reset

Start

Status Monitor

## 6 Adjusting the Gradation Automatically



You can adjust the color gradations to get a better printing result.

Specify the settings required for using the fax functions.

## Installing the Software/ Drivers

Install the software and drivers from the CD/DVD-ROM included, or visit the URL below and download them from the Canon website for your country/region.


<https://global.canon/en/support/>



Example: MF832Cdw download



## Documents / Resources

	<p><a href="#">Canon Multifunction Printer</a> [pdf] User Guide Multifunction Printer, MF832Cdw</p>
---	---

## References

- [Canon Global](#)
- [For Product and Support Information | Canon Global](#)
- [Canon - User Manuals](#)

[Manuals+](#), [home](#) [privacy](#)