



Canon LBP122dw Single Function Printer Installation Guide

[Home](#) » [Canon](#) » Canon LBP122dw Single Function Printer Installation Guide 

Contents

- [1 Canon LBP122dw Single Function Printer](#)
- [2 Product Information](#)
- [3 Product Usage Instructions](#)
- [4 Checking the Items Included](#)
- [5 Removing the Packing Material](#)
- [6 Loading Paper](#)
- [7 Specifying the Security Settings](#)
 - [7.1 Wireless LAN](#)
 - [7.2 Wired LAN](#)
- [8 Setting Up the Toner Replenishment Service](#)
 - [8.1 Ending the Setup Guide](#)
- [9 Installing the Software/Drivers](#)
 - [9.1 Installing from the Bundled CD/DVD-ROM](#)
- [10 Useful Functions and Helpful Information](#)
- [11 Documents / Resources](#)
 - [11.1 References](#)
- [12 Related Posts](#)



Canon LBP122dw Single Function Printer



Product Information

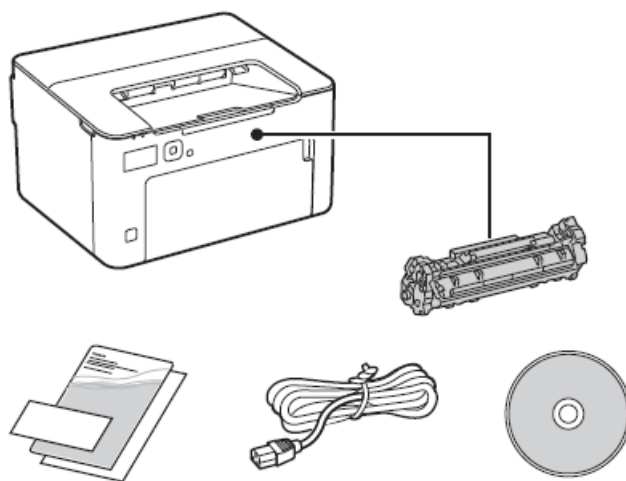
The product is a Canon machine that can be used for printing.

The user manual provides instructions for setting up and using the machine. It includes safety instructions, a setup guide, a user's guide, and FAQs. The machine comes with packing material that needs to be removed before use. The user needs to load paper and connect the power cord to begin using the machine. The machine also requires basic settings such as language, time zone, and date/time configuration. Additionally, network settings need to be specified to connect the machine to a network. Remote UI access PIN and security settings need to be set up to prevent unauthorized access to the machine. Toner replenishment service can also be set up if the user enters into an agreement beforehand. Finally, the user needs to install the printer driver to use the print function of the machine.

Product Usage Instructions

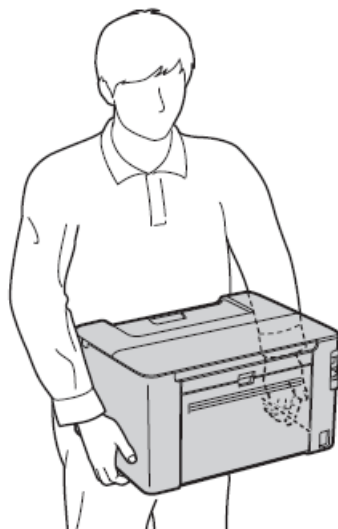
1. Read the safety instructions provided in the user manual before using the machine.
2. Remove all packing material and tape from the machine. Do not remove the sticker that covers the USB port until you actually use the USB port.
3. Load paper into the machine ensuring that the amount of paper loaded is not above the specified line.
4. Connect the power cord to the machine and a power source.
5. Specify basic settings such as language, time zone, and date/time configuration by following the on-screen instructions that appear on the operation panel when you turn on the machine for the first time.
6. Specify network settings for connecting the machine to a network. Check that your computer and router are correctly connected to the network before proceeding.
7. Set Remote UI access PIN and security settings to prevent unauthorized access to the machine. Remote UI allows you to use your computer's Web browser to check the machine's operating status and change settings.
8. Set up toner replenishment service if you have entered into an agreement beforehand.
9. Install the printer driver to use the print function of the machine. You can download the software and drivers from the Canon website.

Checking the Items Included

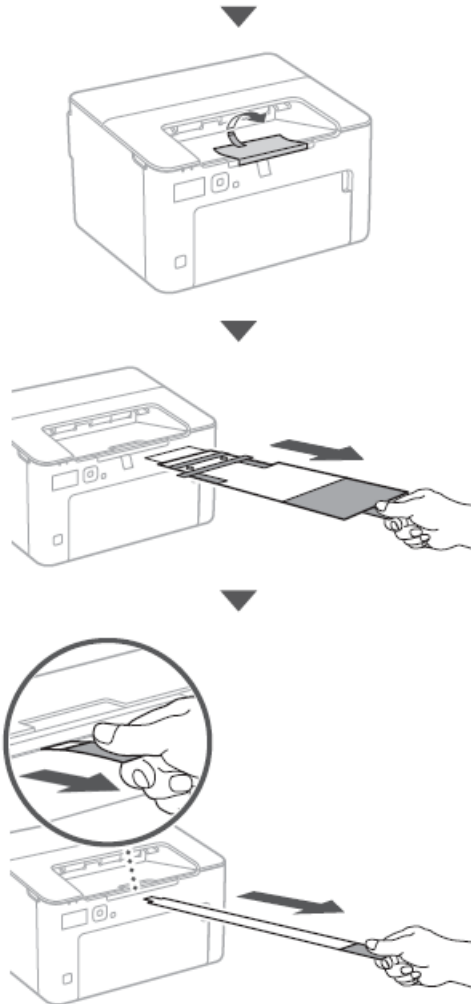
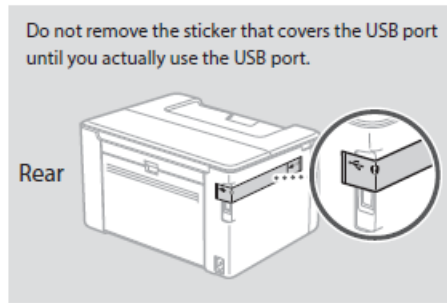


Removing the Packing Material

1. Install the machine in the location where it will be used.

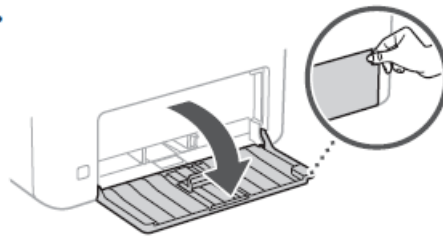


2. Remove all packing material.
Remove all of the tape.

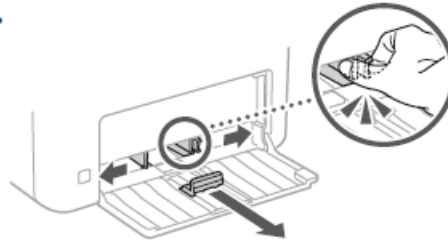


Loading Paper

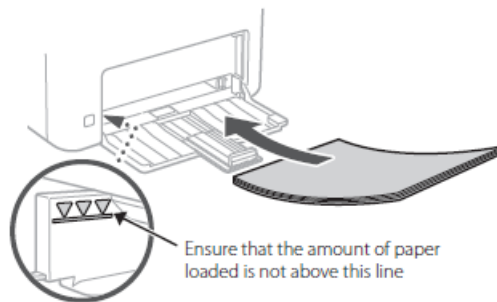
1.



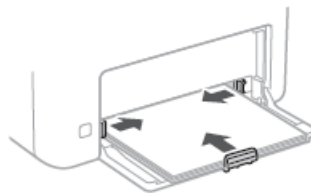
2.



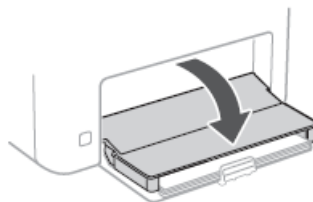
3.



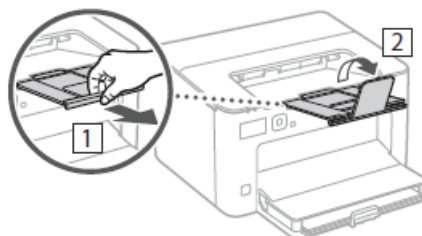
4.



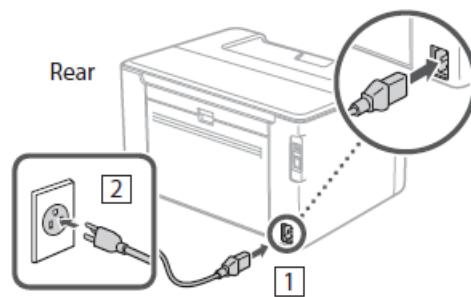
5.



Setting Up the Paper Stopper

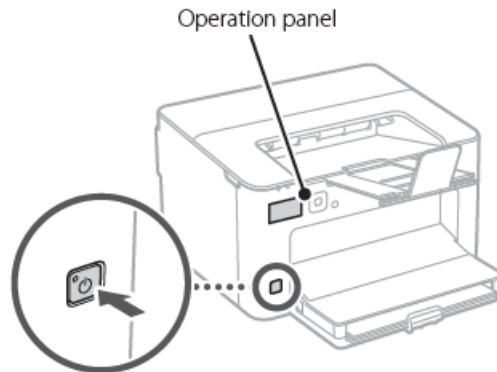


Connecting the Power Cord



Specifying the Basic Settings

When you turn on the machine for the first time, the Setup Guide appears on the operation panel. Perform the initial machine setup by following the on-screen instructions.



1. Select the language, the country or region, and then the time zone.
2. Set the current date/time.

Specifying the Security Settings

To prevent unauthorized access to the machine, set access restrictions for Remote UI.

What is Remote UI?

Remote UI allows you to use your computer's Web browser to check the machine's operating status and change settings.

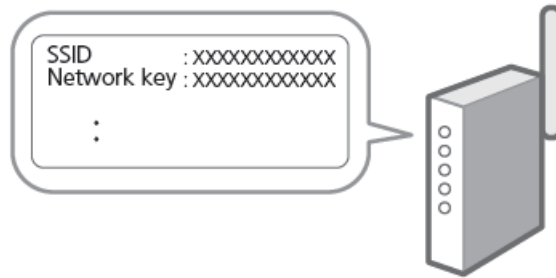
1. To use the Remote UI, select <Yes>. To continue without using the Remote UI, select <No> and proceed to step 8.
2. Check the message and press OK.
3. To set the Remote UI Access PIN here, select <Yes>.
 - Set the PIN used to access the Remote UI.
 - To set the PIN later, select <No> and proceed to step 8.
4. Set the Remote UI Access PIN.
 - Enter any number and then select <Apply>.
 - Re-enter the same PIN on the next screen as confirmation and select <Apply>.
5. Specifying the Network Settings

Specify the settings for connecting the machine to a network. Before proceeding, check that the computer and router are correctly connected to the network.

- You cannot use a wired LAN and a wireless LAN at the same time.

Wireless LAN

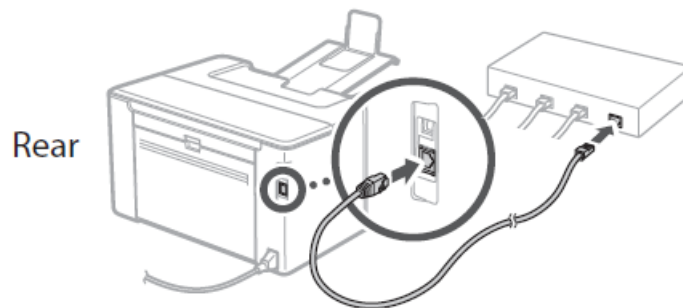
1. Check the router's "SSID" and "Network key."



2. To configure the settings, select <Yes> on the operation panel.
3. Select the network with a matching SSID.
4. Enter the password (network key) and select <Apply>.
5. Select <Yes> to connect using the selected settings.
Select <No> to return to the previous screen.

Wired LAN

Connect the router to the machine with a LAN cable and then select <No> in the screen for choosing how to connect to the network.



Setting Up the Toner Replenishment Service

Use this procedure to set up the toner replenishment service. To use this service, you must enter into an agreement beforehand.

1. Select an option based on whether you subscribed to the toner replenishment service when you purchased the machine.
 - If you subscribed to the service, select <Yes>.
 - If you did not subscribe to the service, select <No> and proceed to step 10.
 - Check the message and press OK.
2. Check the conditions of use, and then choose whether or not to use the service.
 - To use the service: <Accept>.
 - To not use the service or not enter into an agreement: Select <Do Not Accept> and proceed to step 10.
3. When <Connection was successful.> appears, press OK.

Ending the Setup Guide

1. Check the message and press

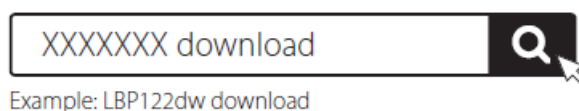
To save the date/time settings, the battery must be charged for 24 hours. After you end the Setup Guide, be sure to leave the mains power to the machine ON for at least 24 hours.

Installing the Software/Drivers

To use the print function of the machine, you must install the printer driver.

Downloading from the Canon website

1. Search for “(model name) download.”



If you cannot find the download site, go to <https://global.canon/en/support/>

2. Download the software and drivers, and install them on your computer.

Installing from the Bundled CD/DVD-ROM

1. Load the CD/DVD-ROM into your computer, and install the software and drivers.

For normal installation, select “Easy Installation.” Selecting “Easy Installation” installs the drivers along with the standard software and manuals.

If a problem arises during the installation, see “Questions Related to Drivers” in “FAQ.” Accessing the FAQ p. 6 “Accessing the Online Manual”

Useful Functions and Helpful Information

Accessing the Online Manual

1. Scan the QR code to open the website to the Canon online manual.



If the site does not open, go to <https://oip.manual.canon/>

2. Select the manual.

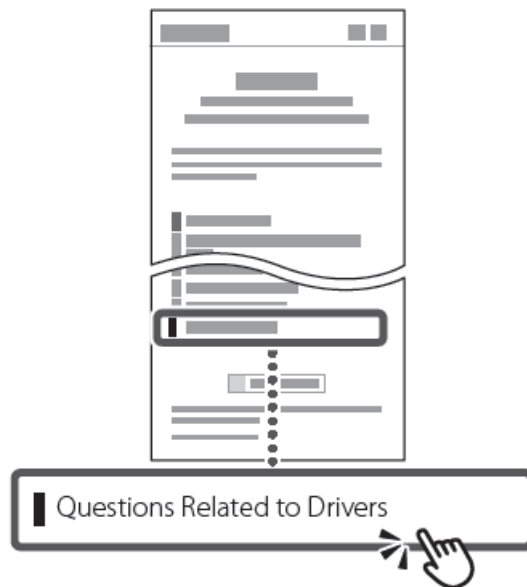
User's Guide

This section lists the functions of the machine, including machine operations, settings, and operating procedures.

FAQ

This section lists frequently asked questions and their answers.

If a problem arises during driver installation, see “Questions Related to Drivers.”

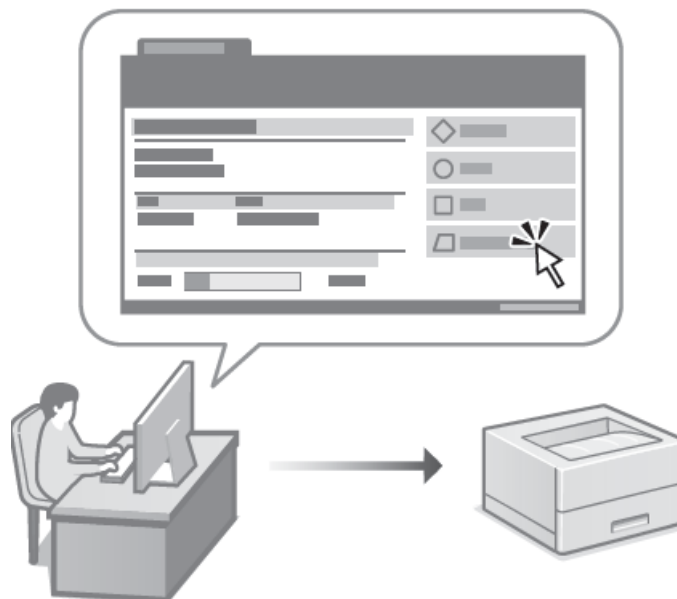


Using this Machine from a Mobile Device (Linking with Mobile Devices)

This machine can be used from mobile devices such as smartphones. This makes it easy to print documents or photos from a mobile device.

User's Guide See "Linking with Mobile Devices."


Managing the Machine from a Computer (Remote UI)



Remote UI allows this machine to be managed using the Web browser on a computer. You can use it to check the machine's operating status and change settings.

User's Guide See "Managing the Machine from a Computer (Remote UI)."

Documents / Resources

	<p>Canon LBP122dw Single Function Printer [pdf] Installation Guide LBP122dw Single Function Printer, LBP122dw, Single Function Printer, Function Printer, Printer</p>
---	--

References

- CANON [Canon Global](#)
- CANON [For Product and Support Information | Canon Global](#)
- CANON [Canon - User Manuals](#)