




Canon i-Sensys X C1333P Single Function Printer User Guide

[Home](#) » [Canon](#) » Canon i-Sensys X C1333P Single Function Printer User Guide 



C1333P Setup Guide

- After you finish reading this guide, store it in a safe place for future reference.
- The information in this guide is subject to change without notice.

1. Important Safety Instructions

Be sure to read these instructions before using the machine.

2. Setup Guide (this document)

3. User's Guide

This section explains all the ways this machine can be used.

FAQ

This section describes problems that may arise and how to resolve these problems.

for Europe	for Americas
	
https://go.oip.manual.canon/?rid=TH935AnG	https://go.oip.manual.canon/?rid=1NGGFqlj
https://oip.manual.canon/	

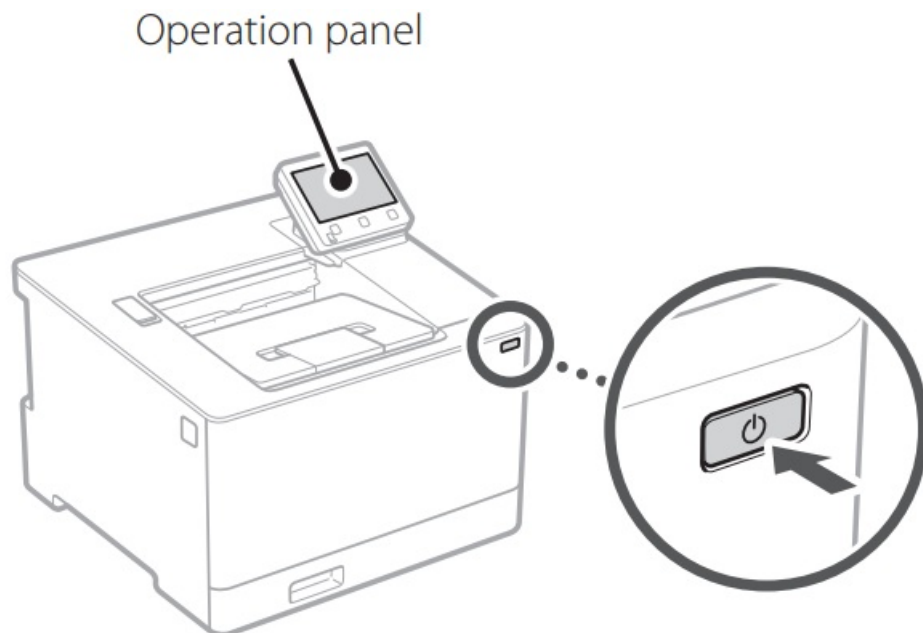
See p. 4 “Accessing the Online Manual” for details.

Contents

- [1 Configuring the Initial Settings](#)
- [2 Specifying the Security Settings](#)
- [3 Specifying the Network Settings](#)
- [4 Ending the Setup Guide](#)
- [5 Installing the Software/Drivers](#)
- [6 Documents / Resources](#)
 - [6.1 References](#)
- [7 Related Posts](#)

Configuring the Initial Settings

When you turn on the machine for the first time, the Setup Guide appears on the operation panel. Perform the initial machine setup by following the on-screen instructions.



1. Select the language, the country or region, and then the time zone.
2. Set the current date/time.

Specifying the Security Settings

To prevent unauthorized access to the machine, set access restrictions for Remote UI.



What is Remote UI?

Remote UI allows you to use your computer's Web browser to check the machine's operating status and change settings.

1. To use the Remote UI, select <Yes>.

To continue without using the Remote UI, select <No> and proceed to step 3.

2. To use System Manager mode, select <Yes>.

- Set the System Manager ID and PIN so that you can configure the settings for extended functions and the management of access privileges, etc.
- To continue without using System Manager mode, select <No> and proceed to step 5.

3. Set the System Manager ID.

Enter any number and then select <Apply>.

4. Set the System Manager PIN.

- Enter any number and then select <Apply>.
- Re-enter the same PIN on the next screen as confirmation and select <Apply>.

5. To use General User mode, select <Yes>.

- Set the PIN to be used by general users to access the Remote UI.
- To continue without using General User mode, select <No> and proceed to step 3.

6. Set the Remote UI Access PIN.

- Enter any number and then select <Apply>.
- Re-enter the same PIN on the next screen as confirmation and select <Apply>.

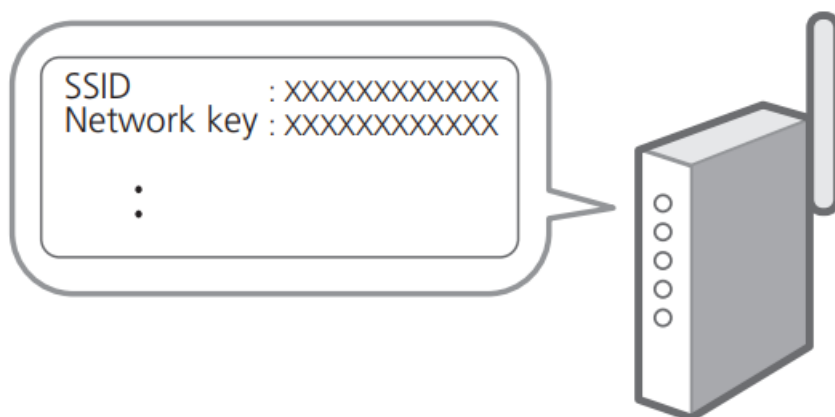
Specifying the Network Settings

Specify the settings for connecting the machine to a network. Before proceeding, check that the computer and router are correctly connected to the network.

- You cannot use a wired LAN and a wireless LAN at the same time.

Wireless LAN

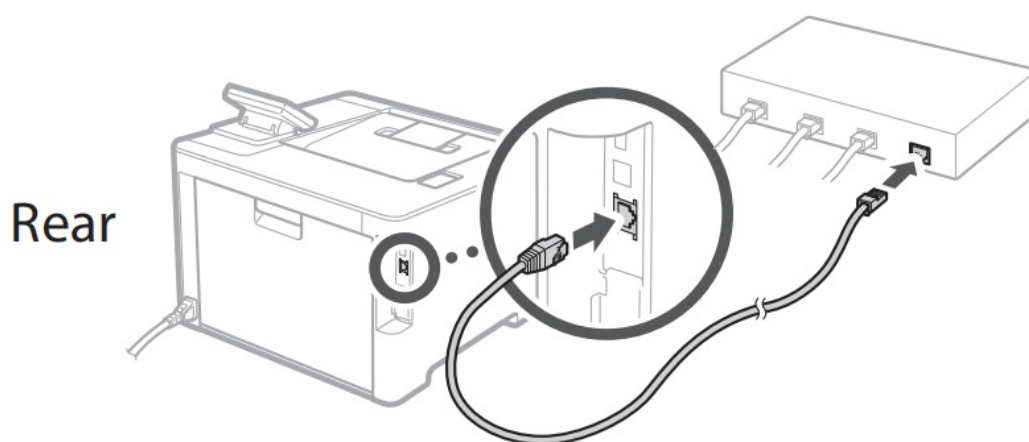
1. Check the router's "SSID" and "Network key."



2. To configure the settings, select <Yes> on the operation panel.
3. Select the network with a matching SSID.
4. Enter the password (network key) and select <Apply>.

Wired LAN

Connect the router to the machine with a LAN cable and then select <No> on the screen for choosing how to connect to the network.



Ending the Setup Guide

Check the description in the Application Library and then select <End>.

Installing the Software/Drivers

To use the print function of the machine, you must install the printer driver.

1. Search for “(model name) download.”



Example: C1333P download

If you cannot find the download site, go to <https://global.canon/en/support/>
<https://global.canon/en/support/>

2. Download the software and drivers, and install them on your computer.



If a problem arises during the installation, see “See Troubleshooting (FAQ) for drivers” in “FAQ.”
Accessing the FAQ
⇒ p. 4 “Accessing the Online Manual”

Accessing the Online Manual

1. Scan the QR code to open the website to the Canon online manual.

for Europe	for Americas
	
https://go.oip.manual.canon/?rid=TH935AnG	https://go.oip.manual.canon/?rid=1NGGFqlj
If the site does not open, go to https://oip.manual.canon/	

2. **Select the manual.**

User's Guide

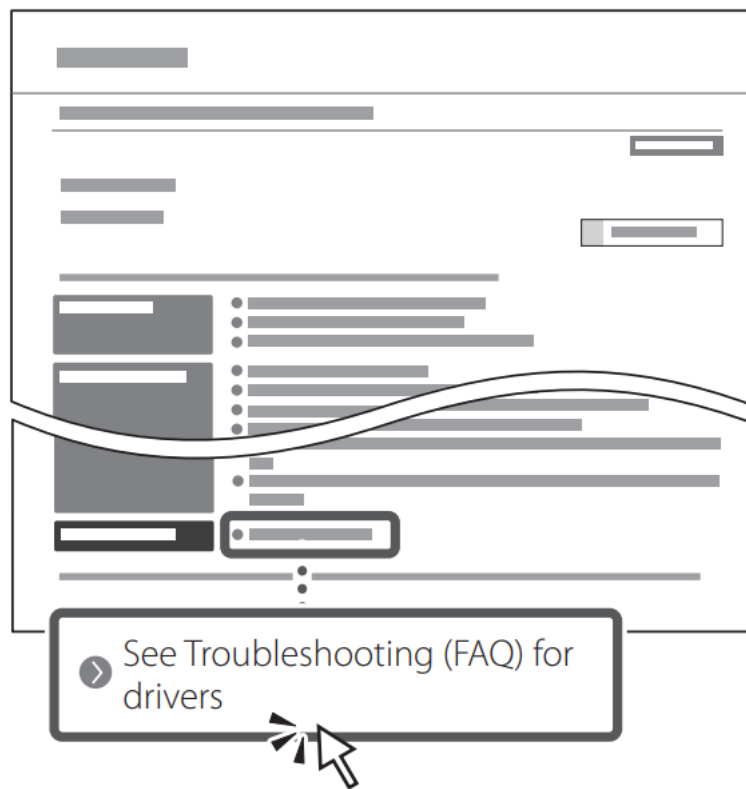
This section lists the functions of the machine, including machine operations, settings, and operating procedures.

FAQ

This section lists frequently asked questions and their answers.



If a problem arises during driver installation, see “See Troubleshooting (FAQ) for drivers.”



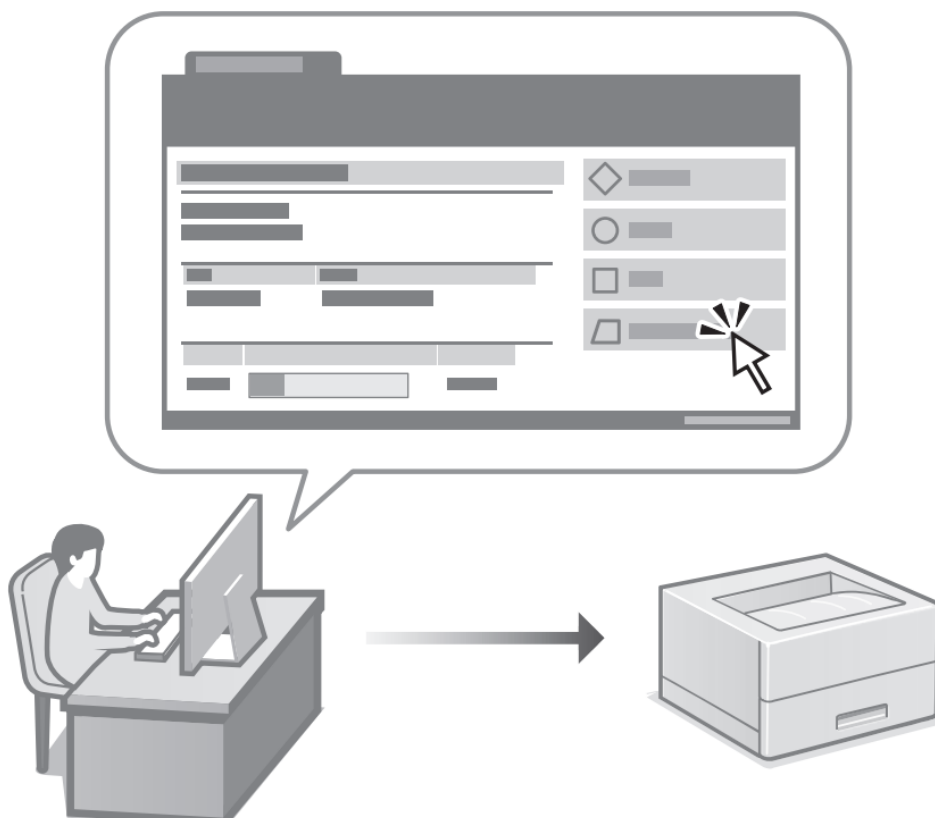
Using this Machine from a Mobile Device (Linking with Mobile Devices)

This machine can be used on mobile devices such as smartphones. This makes it easy to print documents or photos from a mobile device.

⇒ User's Guide

See "Linking with Mobile Devices."

Managing the Machine from a Computer (Remote UI)



Remote UI allows this machine to be managed using the Web browser on a computer. You can use it to check the machine's operating status and change settings.

⇒ User's Guide

See "Managing the Machine from a Computer (Remote UI)."

Demo 

Canon

CANON INC.

30-2, Shimomaruko 3-chome, Ohta-ku, Tokyo 146-8501, Japan

CANON U.S.A., INC.

One Canon Park, Melville, NY 11747, U.S.A.

CANON CANADA INC.

8000 Mississauga Road Brampton ON L6Y 5Z7, Canada

CANON EUROPA N.V.

Bovenkerkerweg 59, 1185 XB Amstelveen, The Netherlands

(See <http://www.canon-europe.com/> for details on your regional dealer)

CANON AUSTRALIA PTY LTD

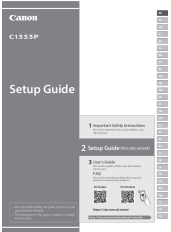
Building A, The Park Estate, 5 Talavera Road, Macquarie Park, NSW 2113, Australia

CANON SINGAPORE PTE LTD

1 Fusionopolis Place, #14-10, Galaxis, Singapore 138522

USRM3-1107-00 XXXXXXXXXXXX Copyright CANON INC. 2022 PRINTED IN XXXXX

Documents / Resources

	<p>Canon i-Sensys X C1333P Single Function Printer [pdf] User Guide i-Sensys X C1333P, Single Function Printer, i-Sensys X C1333P Single Function Printer</p>
---	---

References

- [Canon Digital Cameras, Lenses, Camcorders & Printers - Canon Europe](#)
- [For Product and Support Information | Canon Global](#)
- [Canon - User Manuals](#)