




# Cannon TS3100 Pixma Printer User Manual

[Home](#) » [CANNON](#) » Cannon TS3100 Pixma Printer User Manual 

## Contents

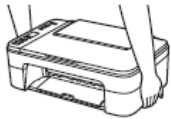

- 1 Cannon TS3100 Pixma Printer User Manual
- 2 Installing the Printer
  - 2.1 Checking Included Items
  - 2.2 Removing Packing Materials / Turning on the Printer
  - 2.3 Installing FINE Cartridge
  - 2.4 Loading Paper
  - 2.5 Select Whether or Not to Connect to Computer or Smartphone
  - 2.6 A. Use Only Printer
  - 2.7 B. Connecting to Computer
  - 2.8 C. Connecting to a Smartphone
- 3 Loading Photo Paper
  - 3.1 Print Results Are Unsatisfactory
- 4 Related Posts



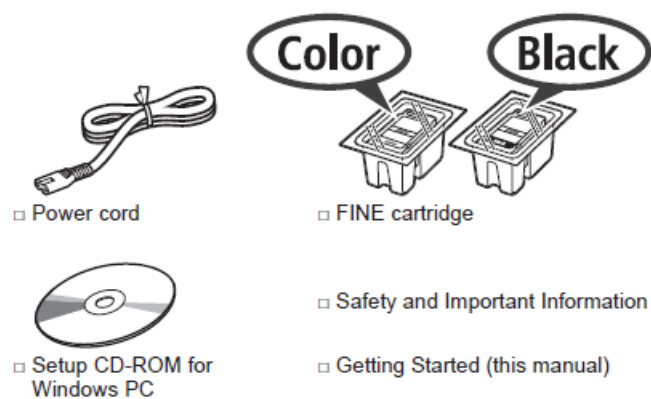
**Cannon TS3100 Pixma Printer User Manual**



## Installing the Printer

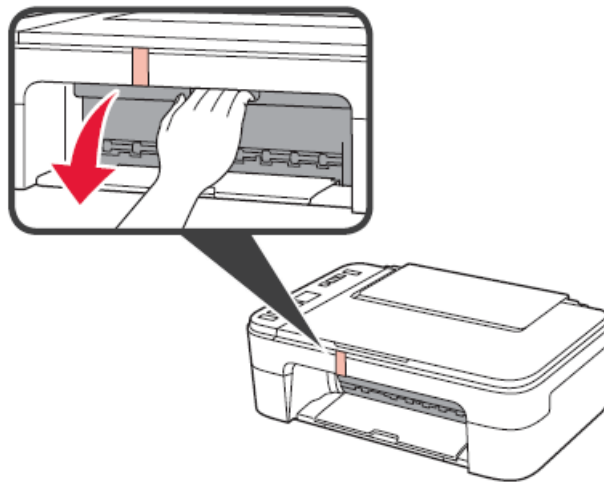
How to Hold Printer	Explanatory Movies
 	<div data-bbox="949 757 1257 929"> </div> <hr/> <div data-bbox="603 1064 1276 1209"> </div> <hr/> <div data-bbox="627 1299 1257 1473"> </div>

## Checking Included Items

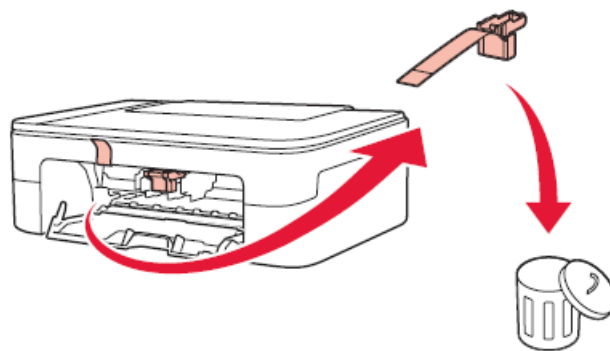


## Removing Packing Materials / Turning on the Printer

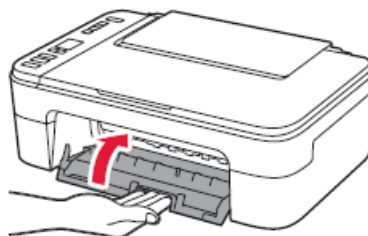
1. Remove the packing materials (such as orange tape) from outside the printer.
2. Open the cover.



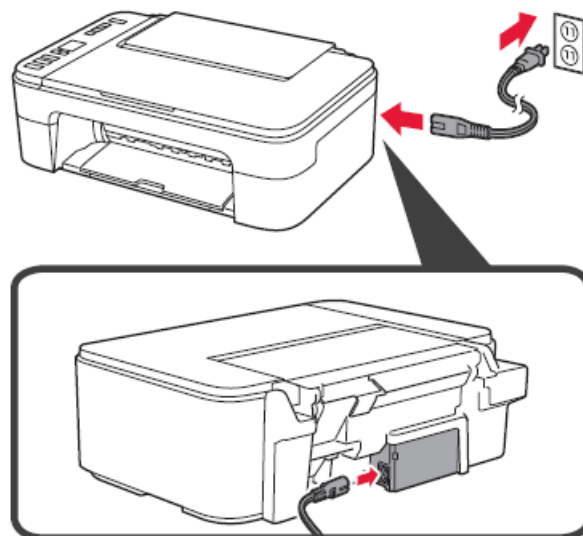
3. Remove the orange tape and the protective material and discard them both.



4. Close the cover.

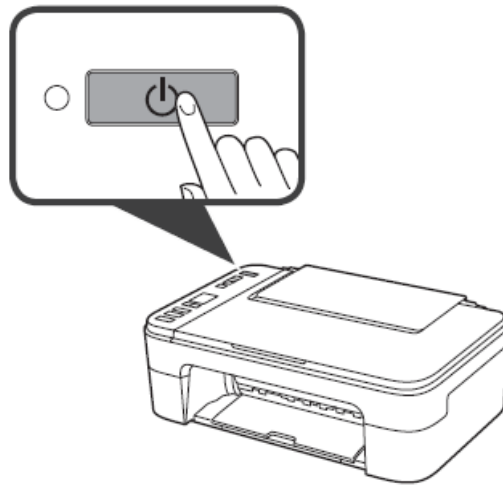


5. Connect the power cord.



Do not connect any cables except the power cord yet.

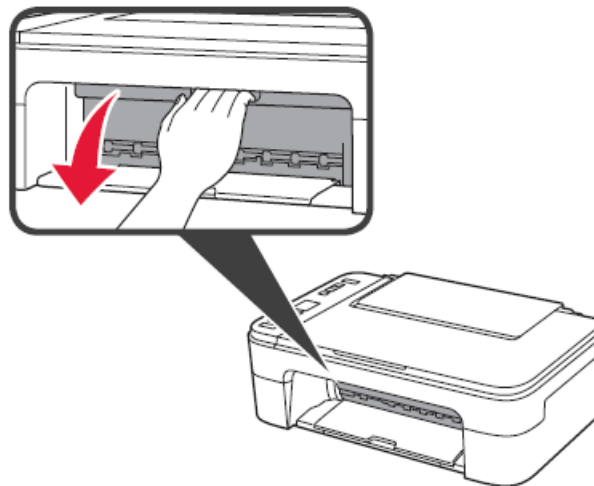
6. Press the ON button.



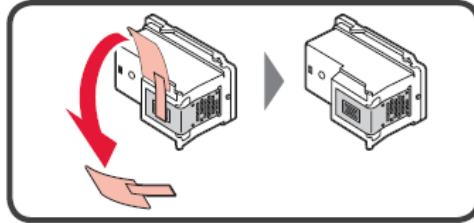
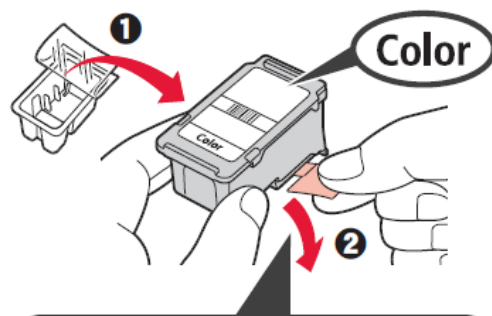
If E > 0 > 9 appears on the screen, press the ON button to turn off the printer, and then redo from step 2.

### Installing FINE Cartridge

1. Open the cover.



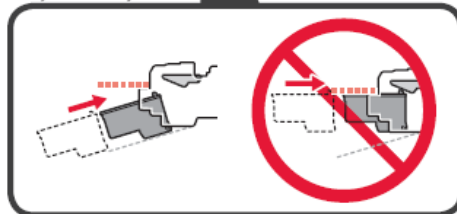
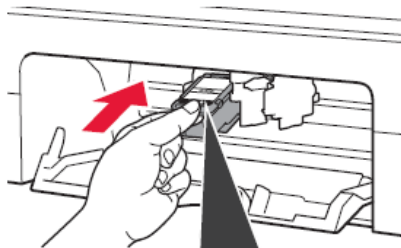
2. Take out the Color FINE cartridge from the package.  
Remove the protective tape.



Do not touch.

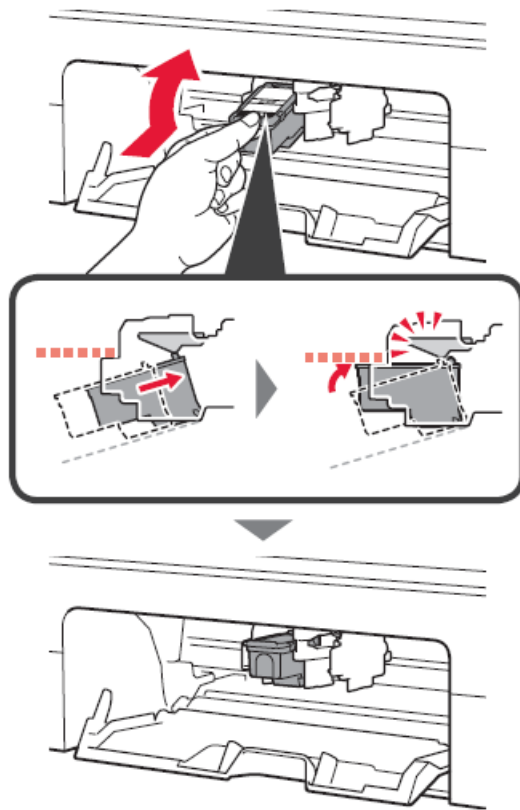
Be careful of ink on the protective tape.

3. Tilt the Color FINE cartridge a little and insert it into the FINE cartridge holder on the left.

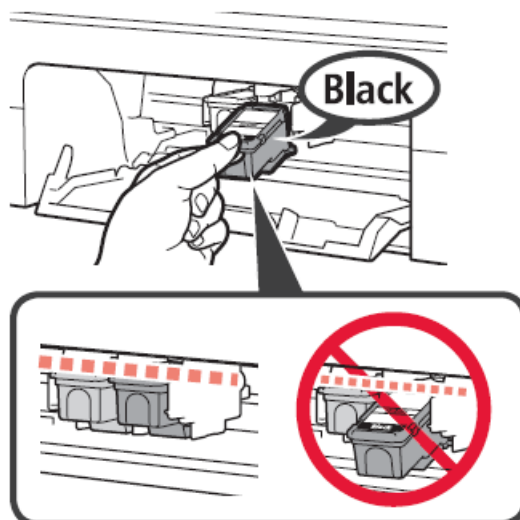


Do not bump it against the surrounding parts.

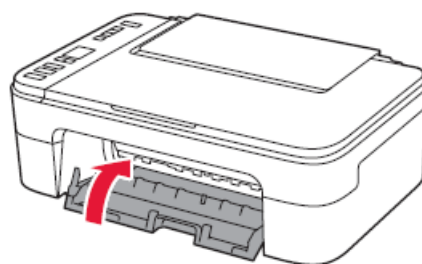
4. Push the FINE Cartridge in and up firmly until it snaps into place.



5. Repeat steps 2 to 4 and install the Black FINE cartridge as well, on the right.



6. Close the cover.



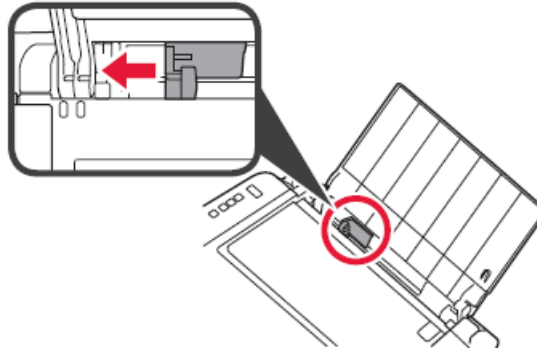
If E > 0 > 4 appears on the screen, return to step 3 and confirm that the Color and Black FINE cartridges are correctly installed.

## Loading Paper

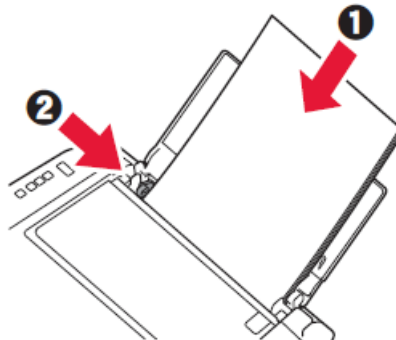
1. Open the paper support.



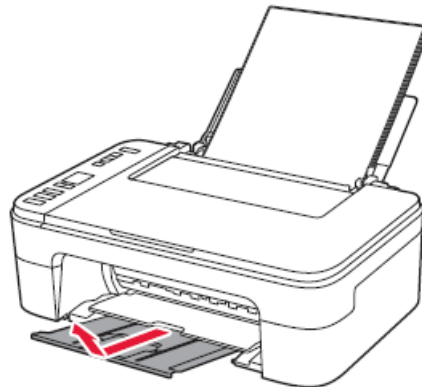
2. Slide the paper guide to the left.



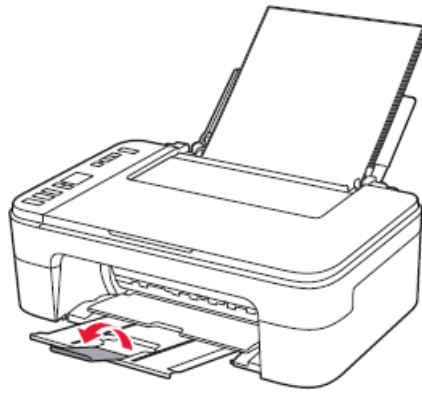
3. a Load plain LTR or A4 size paper against the right edge with the print side facing up.  
b Slide the paper guide to align it with the side of the paper stack.



4. Pull out the paper output tray.



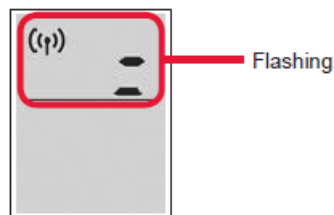
5. Open the output tray extension.



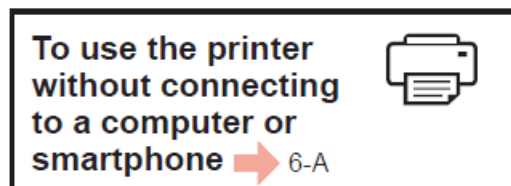
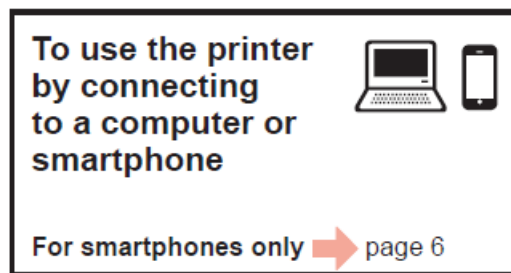
### Select Whether or Not to Connect to Computer or Smartphone

In the following description, smartphones and tablet devices are collectively described as smartphones.

1. Confirm that the screen appears as shown below.

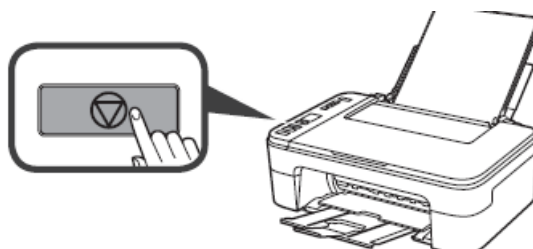


2. Proceed to a step according to how you use the printer.



### A. Use Only Printer

1. Press the Stop button on the printer.



2. Confirm that the screen appears as shown below.





The setup is now complete.

## B. Connecting to Computer

You need a connection setup for each computer. Proceed with the setup from step 1 for each computer.

### 1. Start the setup file for either method or method

#### Downloading from the Internet

- **a** Open a web browser ( etc.) on your computer.
- **b** Input the following URL and access the Canon website.



- **c** Select Set Up.
- **d** Input the model name of your printer and click OK.



You can select a model name from the list.

- **e** Click Setup.

The procedures for Windows and Mac OS are shown below. If you are using a computer with an OS other than Windows or Mac OS, such as a Chrome OS, do the setup according to the on-screen instructions.

- **f** Click Download and download the setup file.



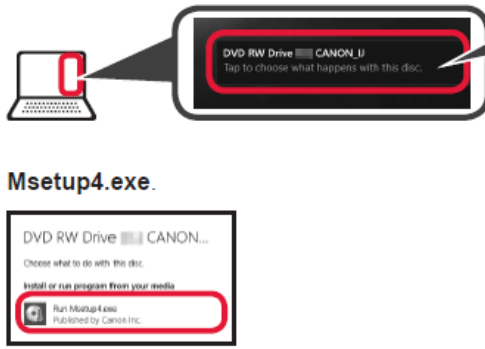
- **g** Execute the downloaded file.  
Proceed to step on the next page to continue.

#### Using Setup CD-ROM (Windows Only)

- **a** Load the Setup CD-ROM in your computer.



- When using Windows 10 or Windows 8.1:
  - **b** When the following message appears on the right side of your computer screen, click it.



**Msetup4.exe.**


DVD RW Drive CANON...  
Tap to choose what happens with this disc.

Install or run program from your media


**Run Msetup4.exe**  
Published by Canon Inc.


When This Message Does Not Appear (or Has Disappeared)

1. Click **File Explorer** on the taskbar.




or



2. Click **This PC** on the left side of the opened window.
3. Double-click the  CD-ROM icon on the right side of the window.  
If the contents of the CD-ROM appear, double-click **Msetup4.exe**.
4. Proceed to step **4**.

- **c** If the following screen appears, click Run Msetup4.exe.
- **d** If the User Account Control dialog box appears, click Yes.
- When using Windows 7:
  - **b** When the AutoPlay screen appears, click Run Msetup4.exe.




**Msetup4.exe.**

DVD RW Drive CANON...  
Always do this for software and games:

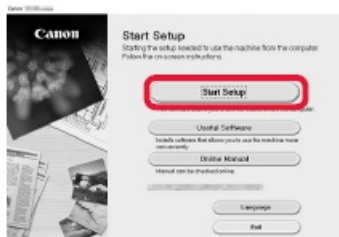
**Run Msetup4.exe**  
Published by Canon Inc.


When **AutoPlay** Screen Does Not Appear

1. Click **Computer** from the start menu.
2. Double-click the  CD-ROM icon on the right side of the opened window.  
If the contents of the CD-ROM appear, double-click **Msetup4.exe**.


- **c** If the User Account Control dialog box appears, click Continue.

### Click Start Setup.





**Follow the on-screen instructions to proceed with the setup.**



The connection with your computer is now complete. You can print from your computer.

### C. Connecting to a Smartphone

You need a connection setup for each smartphone. Proceed with the setup from step 1 for each smartphone.

### Preparation

- Turn on Wi-Fi on your smartphone.
- If you have a wireless router, connect your smartphone to the wireless router you want to connect to the printer.
- \* For operations, refer to manuals of your smartphone and the wireless router or contact those manufacturers.

1. Install the application software Canon PRINT Inkjet/SELPHY in your smartphone.



**iOS** : Search "Canon PRINT" in App Store.  
**Android** : Search "Canon PRINT" in Google Play.  
 Or access the Canon website by scanning the QR code.

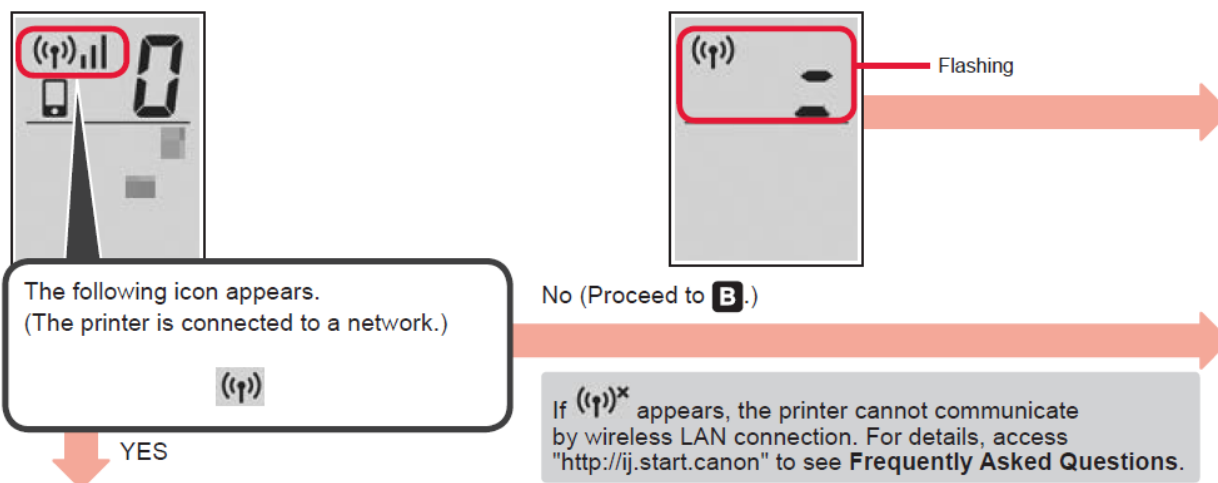


- \* You may not connect your smartphone to the Internet wirelessly during connecting the printer to the smartphone directly. In that case, you may be charged depending on the contract with your service provider.
- \* Up to 5 devices can be connected to the printer via a wireless LAN connection directly.

2. Check the display on the printer.

The screen turns off when no operation is made for about 10 minutes. Press one of the buttons on the operation panel (except for the ON button) to display the screen.

- If the following screen appears:  
Check the icon on the upper left, and then proceed to A or B.
- If the following screen appears: Proceed to B.



**A** **iOS** **Android**

- a Tap the installed application software.
- b Follow the on-screen instructions to register the printer.
  - c Make sure that the following screen appears.



The connection with your smartphone is now complete. You can print from your smartphone.

To print photos, load photo paper. Proceed to “Loading Photo Paper” on page 8.

**B** The procedures below vary depending on iOS or Android. Select your operating system and proceed to its procedure.

## iOS

- a Tap Settings on your smartphone's home screen, and tap Canon\_ij\_XXXX in the Wi-Fi settings.



If Canon\_ij\_XXXX does not appear on the list, see “Preparation for Printer” below to operate the printer, and then repeat step a.

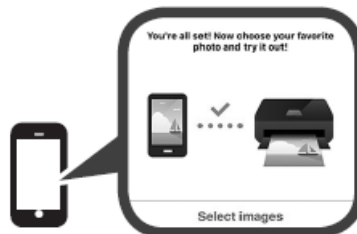
- b Tap the installed application software.
- c Follow the on-screen instructions to register the printer.

Follow the on-screen instructions to proceed with the setup.

If you select Auto Select Conn. Method

(recommended) on the connection method selecting screen, the appropriate connection method is selected automatically depending on your environment.

- d Make sure that the following screen appears.



## Android

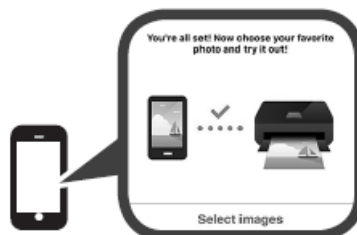
- a Tap the installed application software.
- b Follow the on-screen instructions to register the printer.

If a message saying “Printer is not registered. Perform printer setup?” does not appear, see “Preparation for Printer” below to operate the printer, and then wait for a while until the message appears.

Follow the on-screen instructions to proceed with the setup.

The appropriate connection method is selected depending on your environment.

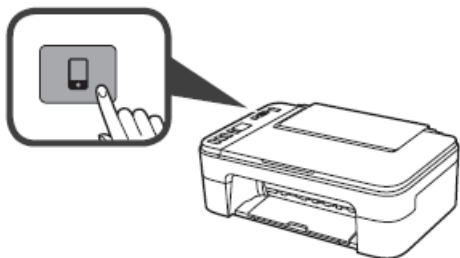
- c Make sure that the following screen appears.



The connection with your smartphone is now complete. You can print from your smartphone. To print photos, load photo paper. Proceed to “Loading Photo Paper” on page 8.

### Preparation for Printer

❶ Press and hold the **Direct** button on the printer.



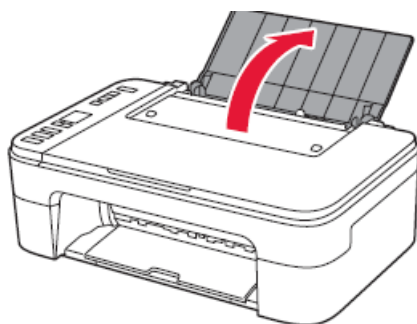
❷ When the following icon starts to flash on the screen, release the button.



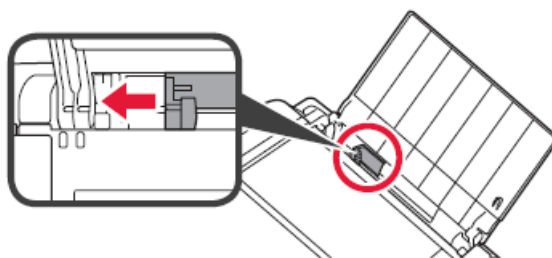
❸ Return to the operation of your smartphone.

### Loading Photo Paper

1. Loading Photo Paper

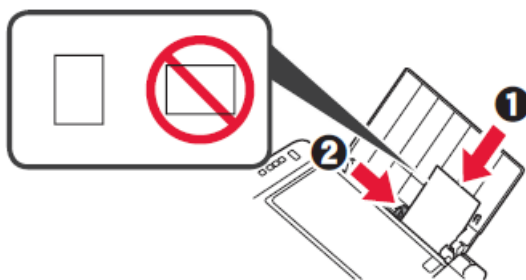


2. Slide the paper guide to the left.

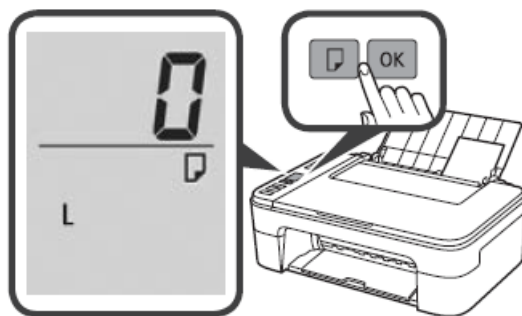


3. a Load photo paper against the right edge with the print side facing up.

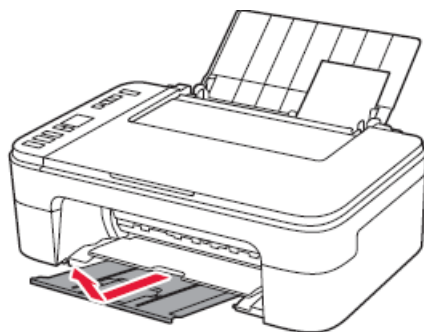
b Slide the paper guide to align it with the side of the paper stack.



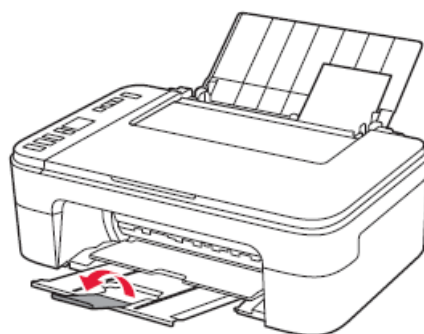
4. Press the Paper button, select a paper size, and then press the OK button.



5. Pull out the paper output tray.



6. Open the output tray extension.



### Print Results Are Unsatisfactory

If the print results are not what you expected, such as if straight lines are crooked or colors are inconsistent, do a Print Head Alignment.

For details, click Maintenance on the Online Manual and refer to If Printing Is Faint or Uneven > Aligning the Print Head.

Refer to the back cover for how to open the Online Manual.

- Lines Are Misaligned



- Uneven or Streaked Colors



**How-To Video Library**

[www.usa.canon.com/howto/printer](http://www.usa.canon.com/howto/printer)

**Download PDF:** [Cannon TS3100 Pixma Printer User Manual](#)

Manuals+.