

Canac 18000156 Smart Wired Doorbell with Push Button



Canac 18000156 Smart Wired Doorbell with Push Button Instruction Manual

[Home](#) » [Canac](#) » Canac 18000156 Smart Wired Doorbell with Push Button Instruction Manual 

Contents

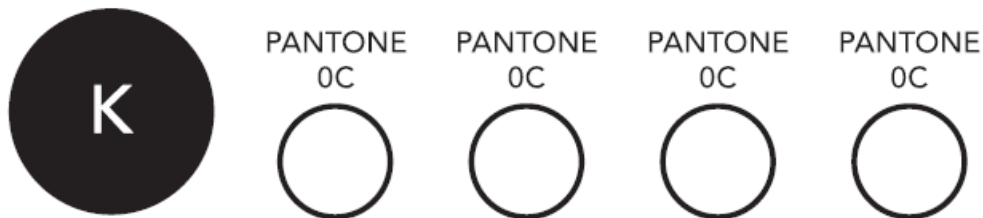
- 1 Canac 18000156 Smart Wired Doorbell with Push Button
- 2 PRINTING SPECIFICATIONS FOR SKU
- 3 CARD DIMENSIONS
- 4 SAFETY INFORMATION
- 5 PACKAGE CONTENTS
- 6 TOOLS REQUIRED
- 7 INSTALLATION
- 8 CONNECTING INSTRUCTIONS
- 9 CONTROLLING THROUGH THE APP
- 10 DEVICE SETTINGS
- 11 GENERAL SETTINGS
- 12 TROUBLESHOOTING
- 13 SMART PUSH-BUTTON INDICATOR LIGHT
- 14 Documents / Resources
 - 14.1 References



Canac 18000156 Smart Wired Doorbell with Push Button



PRINTING SPECIFICATIONS FOR SKU



CARD DIMENSIONS

- **w (width):** 297 mm
- **h (height):** 210 mm



Illustrations may vary from actual unit.

- Before returning to the store, please contact our support team for assistance at 1-888-543-1388

SAFETY INFORMATION

- Please read and understand this entire manual before attempting to assemble, install, or operate this doorbell kit.
- All electrical work must be in accordance with national and local electrical codes. If in doubt, consult a qualified electrician.
- This doorbell requires a 16 volt AC, 10 watt or a 16 volt AC, 15 watt transformer (included).

WARNING: This doorbell requires a low voltage electrical connection. Do not connect directly to 120V AC.

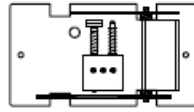
WARNING: Turn off power at fuse or circuit breaker before installing transformer.

PACKAGE CONTENTS

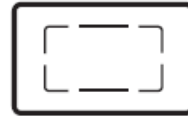
Illustrations may vary from actual unit.



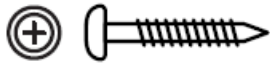
smart
push-button



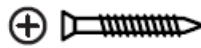
chime
base



chime
cover



2x screws
(large)



2x screws
(small)

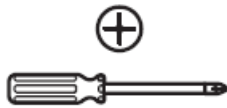


2x screws
(M3X4)

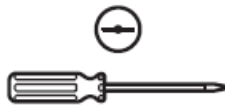


anchors

TOOLS REQUIRED



phillips head
screwdriver



flat head
screwdriver



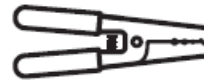
safety
goggles



work gloves



pliers



wire stripper



masking
tape



pen



3x wire
connectors



power
drill



1/16" (1.5mm)
drill bit



7/32" (5.5mm)
drill bit

INSTALLATION

Turn off power

Turn off the power at fuse or circuit breaker before installation.

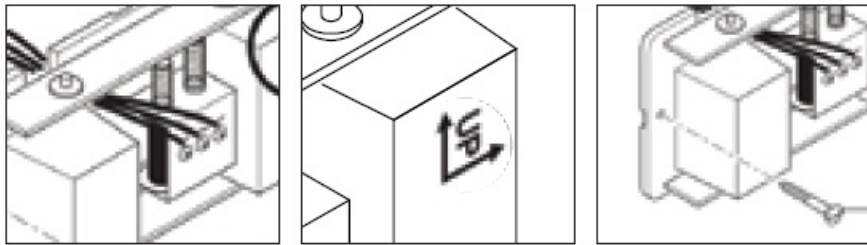
Verify the transformer power rating

16V AC transformer with a 10W or greater rating.

WARNING: This doorbell requires a low voltage electrical connection. Do not connect directly to 120V AC.

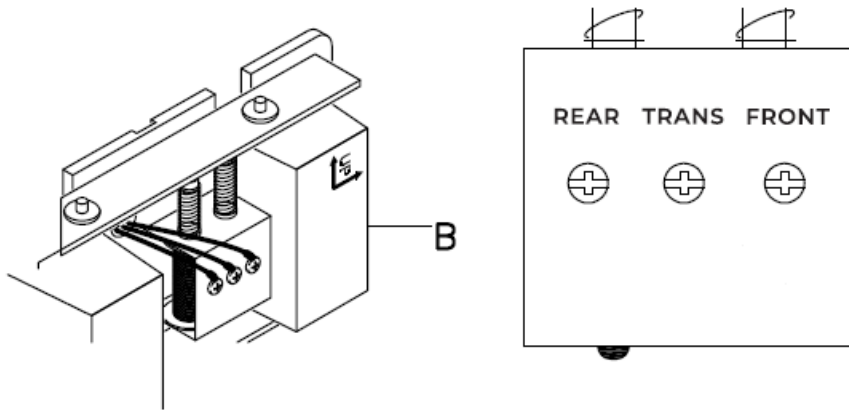
Mounting the chime base

- Feed wires through the wire entrance hole.
- Using the "UP" arrow indicator, place the chime base against the wall and mark the two screw hole locations.
- Drill two 7/32" pilot holes and insert wall anchors.
- Attach the chime base to the mounting surface using the two screws (large) and tighten securely.



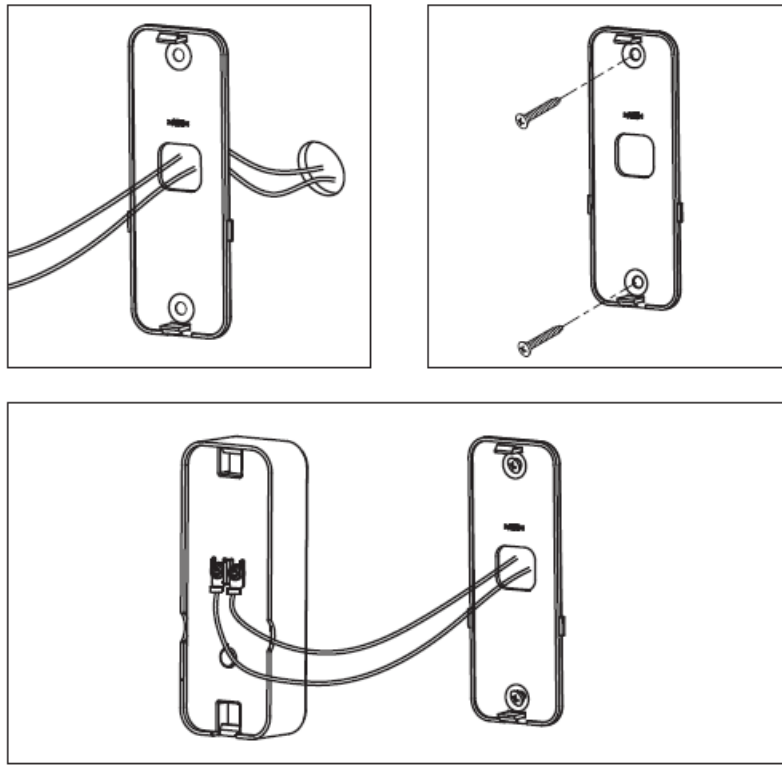
Wiring the chime

- Connect the wires to the chime base (B):
 - Wire “F” to screw terminal “FRONT”
 - Wire “T” to screw terminal “TRANS”
 - Wire “R” to screw terminal “REAR”
- Press the doorbell cover onto the doorbell base (B).



Installing the smart push-button

- Place push buttons fixed plate on the mounting surface where the bell wire exits and verify it is level. Mark the mounting surface through the two mounting holes and drill two 1/16 in. pilot holes.
- Fasten the mounted plate to the mounting surface with two screws (small)
- Pull the cables through the holes in the mounting plate and connect to the binding post. Lock with two screws (M3X4)




- Turn power back on at fuse or junction box and test system to verify it is working properly.

CONNECTING INSTRUCTIONS

Download the Globe Suite™ app from the ios or Android store

- Create an account and log in. Ensure your mobile device is running iOS 9.0/watchOS 2.0/Android™ 4.4 or higher.

Connect

- Ensure the doorbell kit is powered and all requested permissions are enabled on your mobile device: Wi-Fi, Bluetooth, Location Services.
- On the app's home screen, select the  in the top-right corner and select "Add a device". The app will detect it within a few seconds. When discovered, select "Add" beside the push-button icon.

Setup

- Name your push-button and choose which room to place it in. You can now control it directly from the app.

Voice assistance

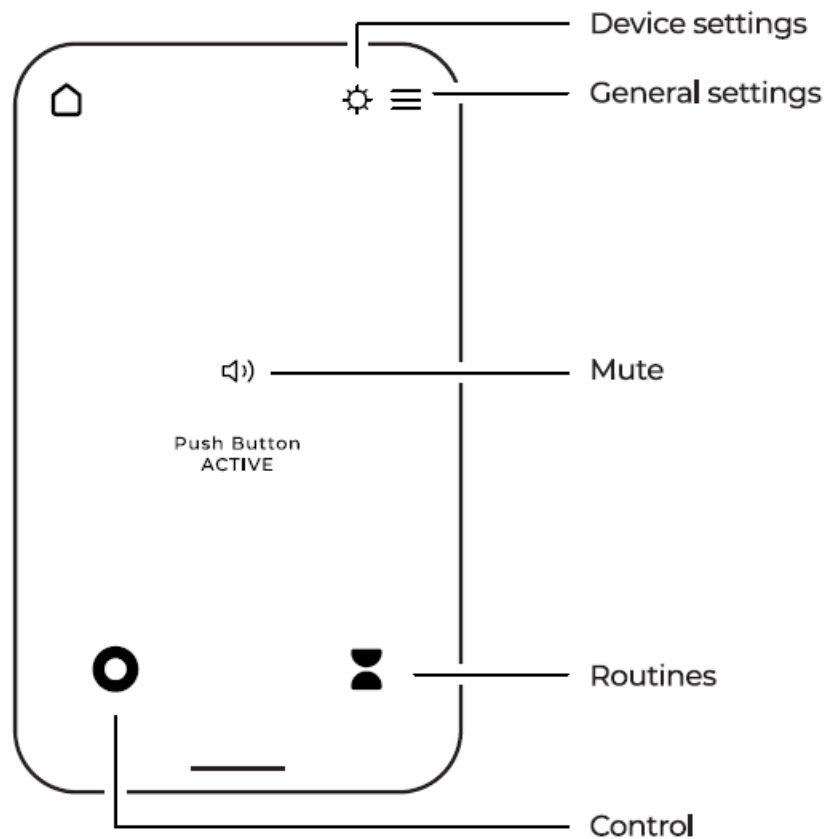
On the app's home screen, select "Profile," and select "Integration." Choose your voice assistant and follow the instructions within the app.

Need help?

Select the "How do I set device into pairing mode" link on the "scan" page and follow the in-app instructions.

- No Wi-Fi. No problem. Continues operating as a regular doorbell if internet connection is lost.

CONTROLLING THROUGH THE APP



Please note that the device UI panel is subject to change without any prior notice.

CONTROL

- Mute options
- Mute / Unmute

ROUTINES

Timer

The doorbell will be muted until the timer runs out.

Add a new schedule

The doorbell can be scheduled to mute at specific times throughout the day or week.

DEVICE SETTINGS

History

Access full ring history.

Indicator light

Customize how the smart push-button's indicator light behaves.

Notifications

Customize how you would like to be alerted when the doorbell is rung.

GENERAL SETTINGS

Delete or restore device

- Restore factory settings to the device or remove it.

CONNECTING TO A WIRELESS CHIME

- This smart push-button can operate as a wireless push-button but must remain wired and powered. It is compatible with HeathZenith® wireless chimes.
- **NOTE:** Wireless chimes have different locations and identifiers for the “Sync” button. Consult the wireless chime instructions to add push-buttons.
- Do not permanently mount the smart push-button until it is working properly with the wireless chime.

TROUBLESHOOTING

- **A** = cause
- **B** = solution

The chime doesn't ring when the smart push-button is pressed

- **A)** The transformer is not working properly.
- **B)** Test transformer voltage output with a voltage tester. Set the volt meter to read A/C voltage. Voltage should read between 18 – 22 volts A/C on the low voltage side of the transformer when the chime is NOT ringing. If the volt meter reads below 18 volts, replace the transformer.
- **A)** The push button is not working properly.
- **B)** Remove the push button that is not working from the door frame. Disconnect the wires from the terminals and touch the bare wires together. If the doorbell sounds, the push button is defective. Replace the push button.
- **A)** The chime is not working properly.
- **B)** Disconnect the wire from the chime terminal marked “TRANS”. While someone presses the push-button at the front door, quickly touch the “TRANS” wire to the terminal marked “FRONT”. You will see a small spark if the push button, wiring, and transformer are operating properly. Repeat the steps for the “REAR” terminal and the rear push button. If the wiring between the transformer and the push button(s) checks out properly, replace the chime.
- **A)** The smart push-button is muted.
- **B)** Open the app and unmute the smart push button.
- **A)** There is no power.
- **B)** Ensure power is on and devices are wired correctly.


A HeathZenith® wireless chime doesn't ring when the smart push-button is pressed.

- **A)** Push-button and wireless chime are not synced.
- **B)** Sync by following these steps:
 - Press and hold the “Sync” button on the chime until it sounds a “Beep-Beep” (about 3 seconds)
 - Press the push-button within 10 seconds. The chime will sound a “Beep-beep” tone to indicate it is synced.
 - Press the push-button to ensure operation.

SMART PUSH-BUTTON INDICATOR LIGHT

Light	State	Description
RED (solid)	Booting up or Wi-Fi error	May display until connected to Wi-Fi
RED (flashing)	Pairing mode	Will display until paired to the app
BLUE (flashing)	Connecting	Displays when attempting to connect to the app
BLUE (solid)	Successfully connected	Displays as long as the chime is connected to the app
OFF	Not connected	Cannot connect to the Wi-Fi or app after 20 minutes
PINK (solid)	Someone's ringing	Lights up for 10 seconds after a push-button is pressed

Documents / Resources

	Canac 18000156 Smart Wired Doorbell with Push Button [pdf] Instruction Manual 18000156 Smart Wired Doorbell with Push Button, 18000156, Smart Wired Doorbell with Push Button, Wired Doorbell with Push Button, Doorbell with Push Button, Push Button, Button
---	---

References

- [User Manual](#)

[Manuals+](#), [Privacy Policy](#)

This website is an independent publication and is neither affiliated with nor endorsed by any of the trademark owners. The "Bluetooth®" word mark and logos are registered trademarks owned by Bluetooth SIG, Inc. The "Wi-Fi®" word mark and logos are registered trademarks owned by the Wi-Fi Alliance. Any use of these marks on this website does not imply any affiliation with or endorsement.