



## camry CR 4414 Multi-Capsule Espresso Machine User Manual

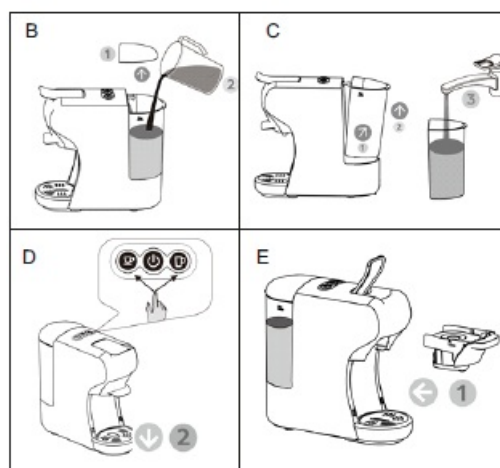
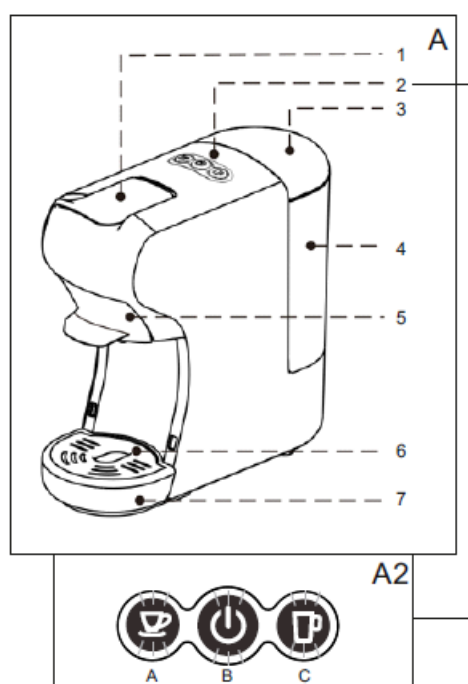
[Home](#) » [camry](#) » camry CR 4414 Multi-Capsule Espresso Machine User Manual 

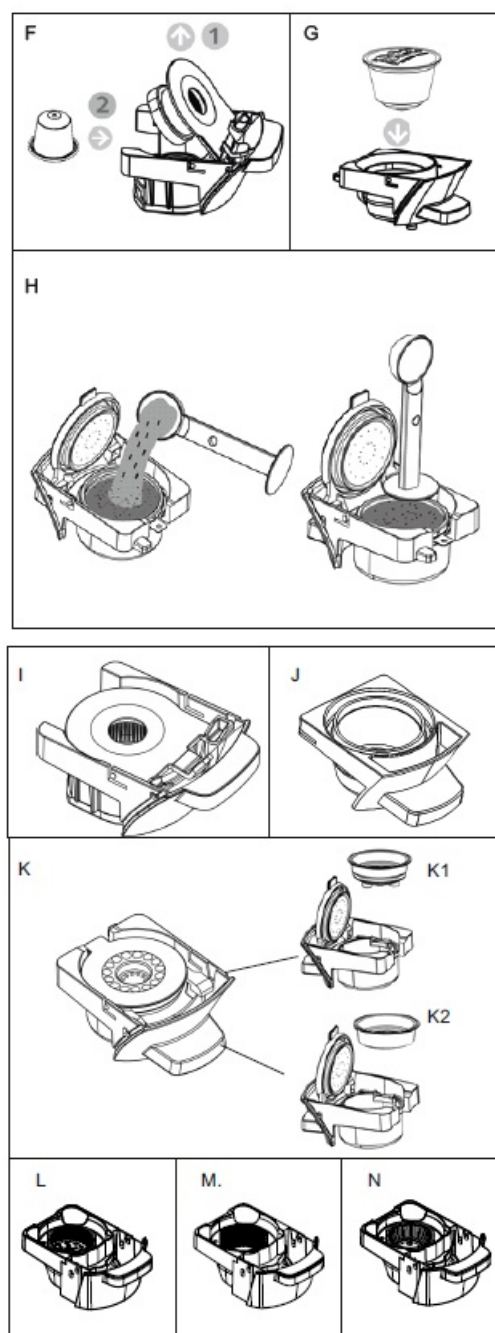
### Contents

- [1 camry CR 4414 Multi-Capsule Espresso Machine](#)
- [2 GENERAL SAFETY CONDITIONS](#)
- [3 Documents / Resources](#)
  - [3.1 References](#)
- [4 Related Posts](#)

# camry

camry CR 4414 Multi-Capsule Espresso Machine





## GENERAL SAFETY CONDITIONS

IMPORTANT SAFETY INSTRUCTIONS. PLEASE READ CAREFULLY AND SAVE FOR FUTURE

1. Before using the device, read the operating manual and follow the instructions contained in it.
2. The device is for home use only. Do not use for other purposes that are not for its intended purpose.
3. The device should only be connected to a 230V~50 Hz grounded socket. To increase operational safety, multiple electrical devices should not be connected to one current circuit at the same time.
4. Use extreme caution when using the device when children are nearby.
5. **WARNING:** This equipment may be used by children over 8 years of age and people with reduced physical, sensory or mental ability, or people who have no experience or knowledge of the equipment, if this is done under the supervision of a person responsible for their safety or have been granted them information on the safe use of the device and are aware of the dangers of using it. Children should not play with the equipment. Cleaning and maintenance of the device should not be performed by children, unless they are over 8 years old and these activities are carried out under supervision.

6. Boil the water in the tank and pour it twice to get rid of the smell before first use.
7. Always remove the plug from the power socket after use by holding the socket with your hand after use.
8. When removing the plug from the socket, never pull the power cord but the plug.
9. Do not expose the device to atmospheric conditions (rain, sun, etc.) or use in conditions of high humidity (bathrooms, damp mobile homes).
10. Do not immerse the cable, plug and the device in water or any other liquid.
11. Periodically check the condition of the power cord. If the power cord is damaged, it should be replaced by a specialist repair shop to avoid danger.
12. Do not use the device with a damaged power cord or if it has been dropped or damaged in any other way or if it is not working properly. Do not repair the device yourself, as there is a risk of electric shock. Take the damaged device to an appropriate service center for checking or repair. All repairs may only be carried out by authorized service points. Incorrectly performed repairs can cause serious danger for the user.
13. Place the device on a cool, stable surface, away from hot kitchen appliances such as: electric stove, gas burner, etc.
14. Do not use the device near flammable materials.
15. The power cord may not hang over the edge of a table or touch hot surfaces. The manufacturer is not liable for damages caused by using the device contrary to its intended purpose or improper operation. Do not allow children to play with the device, do not allow children or people unfamiliar with the device to use it.
16. Do not leave the device switched on or the adapter unattended when unattended.
17. To provide additional protection, it is advisable to install a residual current device (RCD) in the electric circuit with a rated residual current not exceeding 30 mA. Ask an electrician for this advice.
18. Never use the device without water! It may be damaged.
19. Never use the device with sparkling water !!!
20. Never leave the device at a temperature below 0 degrees Celsius, as it may damage it.
21. Always unplug the machine before filling the tank with water.
22. Regularly clean and inspect the machine to ensure the quality of coffee obtained and to extend the life of the machine.
23. Always disconnect the power source before cleaning and allow all hot parts to cool down. The device should be cleaned with a mild non-abrasive detergent. Never use cleaning solvent as this could damage the paint layer.
24. For descaling the machine, use a liquid descaler designed for pressure coffee makers.
25. Use only original accessories.
26. Do not move or move the device during operation.

### **Multi capsule coffee maker description:**

- **Picture A1:**

- K2. Coffee powder
- Lavazza Modo Mio
- Lavazza BLUE
- Caffitaly
- Nespresso capsule
- Dolce Gusto Capsule

- Coffee Pod
- **Brewing baskets:**
  - Espresso
  - Power ON / OFF
  - Cafe Lungo
- **Picture A2:**
  - Lever
  - Control panel
  - Water tank lid
  - Water tank
  - Brewing basket
  - Drip tray cover
  - Drip tray (removable)

### **Preparation:**

First, remove all of the packings from the device and the attachments.

Please clean the body of the device, water tank, attachments, water tank, water tank lid, drip tray with a soft, slightly damp cloth.

### **Use of the device:**

To use the device you need to fill the device with water.

You can do this in 2 ways.

1. Directly into the water tank.
2. By removing the water tank from the device, filling and putting it back into the device.

### **TO add water directly to the water tank (As shown on page 3 picture B):**

1. Remove the water tank lid (3).
2. Pour water into the water tank (4).
3. Put the water tank lid back into its place.

### **To remove the water tank (As shown on page 3 picture C):**

1. Remove the water tank lid (3).
2. Gently but firmly pull on the water tank upwards and away from the device.
3. Fill the water tank with water.
4. Put the water tank back into its designated place.
5. Put the water tank lid (3) back into its place.

### **Setting up the brewing process:**

1. After filling the water tank (3) with water.
2. Turn on the device by pressing the ON / OFF button (A2 B).

**WARNING: DO NOT TURN ON THE DEVICE WITHOUT THE WATER TANK BEING IN PLACE. THE DEVICE EMITS STEAM AND HOT WATER BACK INTO THE WATER TANK BEFORE STARTING.**

3. The control panel will light up and begin to blink.
4. After the control panel stops blinking and shines in a stable light you can begin to prepare the brewing basket (5).
5. If a brewing basket (5) is already inserted in the device:
  1. Pull the lever (1) upwards to release the brewing basket (5).
  2. Remove the brewing basket (5).
6. If the brewing basket (5) is not inserted in the device:
  1. Pull the lever (1) upwards to prepare the device for the brewing basket (5).

#### **Preparing the brewing basket (5):**

1. Depending on the type of capsule or coffee powder choose the correct brewing basket (5).
2. There are 3 types of capsules.
3. Inserted from above. Dolce Gusto (J), Lavazza (L)
4. Inserted from below. Nespresso Capsule (I)
5. Inserted into the metal brewing compartment. Coffee Pod (K1) Coffee Powder (K2)

#### **Depending on the type of capsule please follow the pictures F and G. Picture F:**

1. Pull on the inside of the brewing basket (5) and it will open up.
2. Insert the capsule into the hole in the brewing basket (5) so it is firmly nested inside and does not move.
3. Close the brewing basket (5).

**NOTICE:** The brewing basket (5) should shut completely and no part of the basket should stick out compared to the empty brewing basket (5).

#### **Picture G:**

Push the capsule downwards into the brewing basket (5).

**NOTICE:** The brewing basket (5) should shut completely and no part of the basket should stick out compared to the empty brewing basket (5).

#### **For Coffee powder:**

1. Please check picture H on page 4.
2. Pour the coffee powder into the brewing basket (5) metal adaptor. (Please note that the powder should not spill outside the metal inlay.)
3. Push the coffee powder down making sure it is nice and flat and the adaptor can be closed without using too much strength.

#### **For coffee pods:**

1. Select the coffee powder brewing basket (5).
2. Insert the coffee pod adaptor into the brewing baskets.
3. Lay the coffee pod into the coffee pod adaptor.

#### **Brewing:**

1. Insert the previously prepared brewing basket (5) into the device.

2. Press the lever (1) down slowly but firmly.

WARNING: IF THE LEVER DOES NOT MOVE OR OFFERS MUCH RESISTANCE. DO NOT FORCE IT. REMOVE THE BREWING BASKET (5) AND CHECK IF THE BREWING BASKET (5) IS CORRECTLY ASSEMBLED. OR IF THERE IS TOO MUCH COFFEE POWDER INSIDE THE BREWING BASKET (5).

3. Check if the control panel is shining without any blinking.

4. If the control panel shows no problems press the desired option. Espresso(A2A) or Café Lungo (A2C).

5. The device will start to work. (PLEASE NOTE THE DEVICE WILL DISCHARGE ANY REMAINING WATER FROM THE BREWING TANK BACK INTO THE WATER TANK.)

6. After finishing it will emit 2 sound chimes and will stop working.

7. It will be on standby for around 15 minutes.

8. After that time it will turn off.

You can also always cancel the brewing by pressing the ON / OFF (A2B) button.

9. Pull on the lever (1) upwards to release the brewing basket (5).

10. WARNING. AFTER BREWING THE BREWING BASKET (5) WILL BE HOT TO THE TOUCH. PLEASE TAKE CARE NOT TO BURN YOURSELF.

11. Remove the capsule / pod / coffee powder from the brewing basket (5).

12. Rinse with water until fully clean.

13. Please make sure to drain the detachable drip tray and rinse it with water.

If you want to add some more water or think the amount of coffee is too little you can press and hold the espresso button and the device will continue to produce water. TO stop releasing the button.

You can change the standby mode on or off.

Disable or enable the standby mode:

1. With the device unplugged from the mains power press both the Espresso (A2A) and Lungo (A2C) buttons.

2. Press the espresso (A2A) button to turn the standby mode On (light on) or Off (light turned off).

3. Press the ON / Off (A2B) button to confirm the setting.

### **Decalcification:**

At least once a month or earlier depending on the number of drinks made the device needs to be decalcified.

To do so please follow the below instructions:

**PLEASE NOTE:** NEVER USE VINEGAR OR OTHER ACID-BASED DECALCIFIERS FOR THIS DEVICE. IT CAN DAMAGE THE DEVICE.

1. Use specially made pressure coffee maker decalcifiers.

2. Fill the tank full with the solution of the decalcifier and water as per producers of the decalcifier guidelines.

3. Put a brewing basket (5) into the device and lower the lever (1).

4. Turn on the device.

5. Put a big bowl in place of the cup.


6. Please use the Lungo setting (A2C) and empty at least 2 full tanks of the decalcifier and water solution.

7. After the second tank of the solution is emptied. Please put fresh water into the tank and flush out the solution by emptying the fresh water tank by pressing the lungo button until the tank is empty.

### • Device Data:

- Voltage: 230V ~ 50Hz
- Power: 1450 W
- Maximum Power: 3000 W
- Water capacity: 0,6 L

**Documents / Resources**

	<a href="#">camry CR 4414 Multi-Capsule Espresso Machine</a> [pdf] User Manual CR 4414 Multi-Capsule Espresso Machine, CR 4414, Multi-Capsule Espresso Machine
---	---

**References**

-  [AdlerEurope](#)
-  [AdlerEurope](#)