



camFi CF101 Wireless Remote Camera Controller User Guide

[Home](#) » [camFi](#) » camFi CF101 Wireless Remote Camera Controller User Guide 

Contents

- [1 CF101 Wireless Remote Camera Controller](#)
- [2 Product Information: CamFi Plus](#)
- [3 Chapter 1: Install CamFi Plus Client](#)
- [4 Chapter 2: Wi-Fi Connection](#)
- [5 Documents / Resources](#)
 - [5.1 References](#)
- [6 Related Posts](#)

CamFi

CF101 Wireless Remote Camera Controller

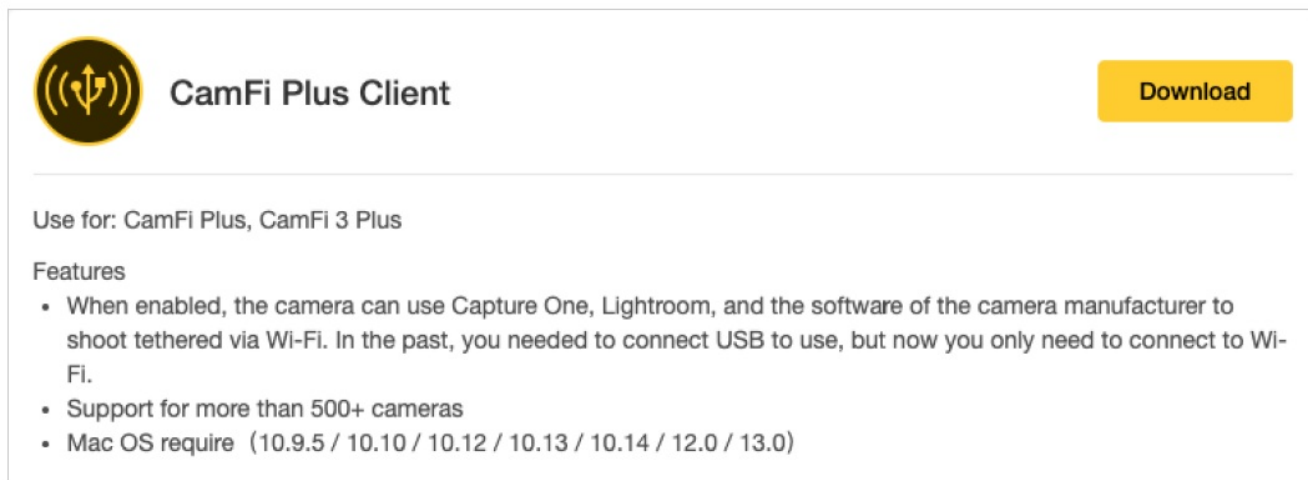


Product Information: CamFi Plus

The CamFi Plus is a remote camera controller developed by CamFi Limited. It allows users to control their cameras wirelessly using a client software and a mobile app. The CamFi Plus offers features such as Wi-Fi connection, third-party software compatibility, and the ability to check the camera's IP via the CamFi App.

Chapter 1: Install CamFi Plus Client

- Download CamFi Plus Client from CamFi official website.
- <https://www.cam-fi.com/en/download.html>

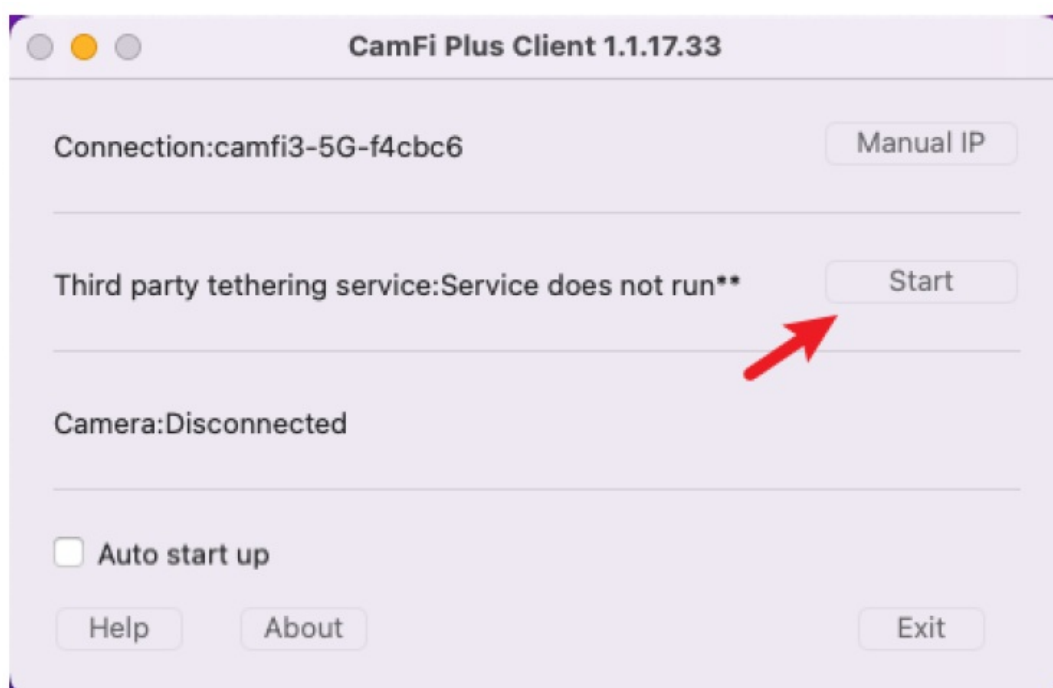


MAC version attention

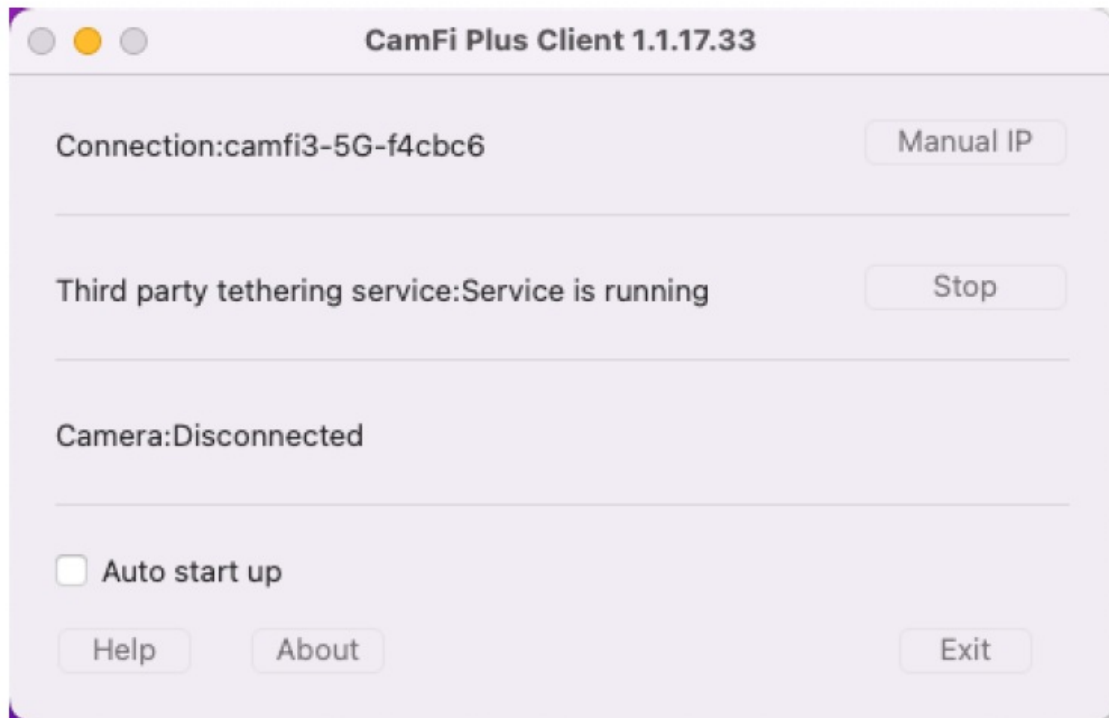
- Mac users are now upgraded to Mac OS 12(Monterey) to support the all-round Wireless tethering.
- MacOS 10.9.5 / 10.10 / 10.12 / 10.13 / 10.14 / 12.0 is supported.
- We recommend that you upgrade Big Sur system to Mac OS 12 as soon as possible.

Chapter 2: Wi-Fi Connection

- Connecting the CamFi Wi-Fi to the computer.
- Open the CamFi Plus Client.



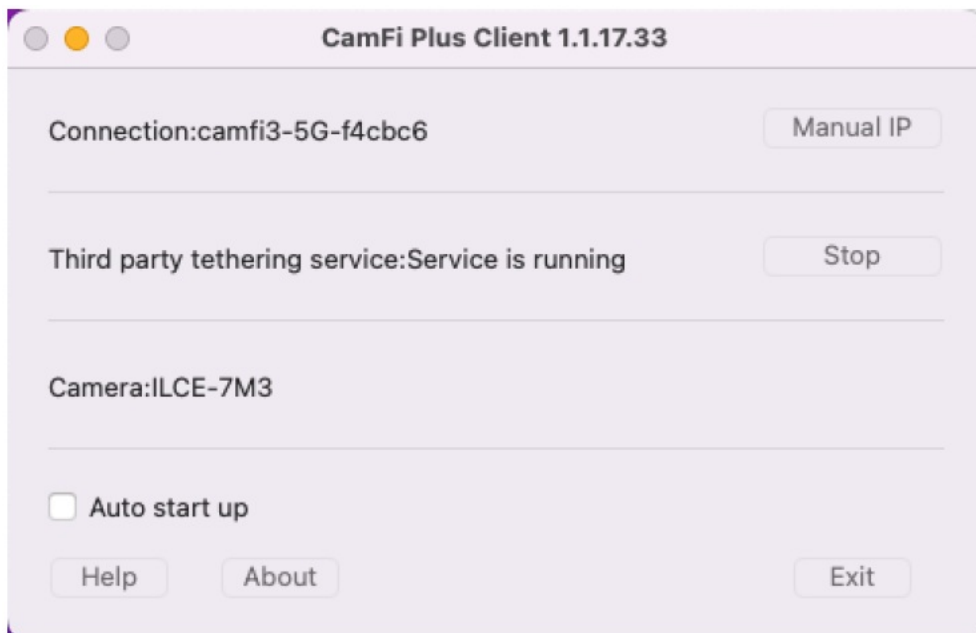
Connection:Disconnected



Attention

if display the "Service is running**", you should wait for minutes or restart the client.

- Connction the camera to the CamFi device with USB cable. And turn on the camera.



- Camera model will be displayed on the client.
- Do not exit the software while you are using the third party tethering.

The client can't connect to the CamFi?

If the client can't connect to the CamFi.

Connection:Disconnected

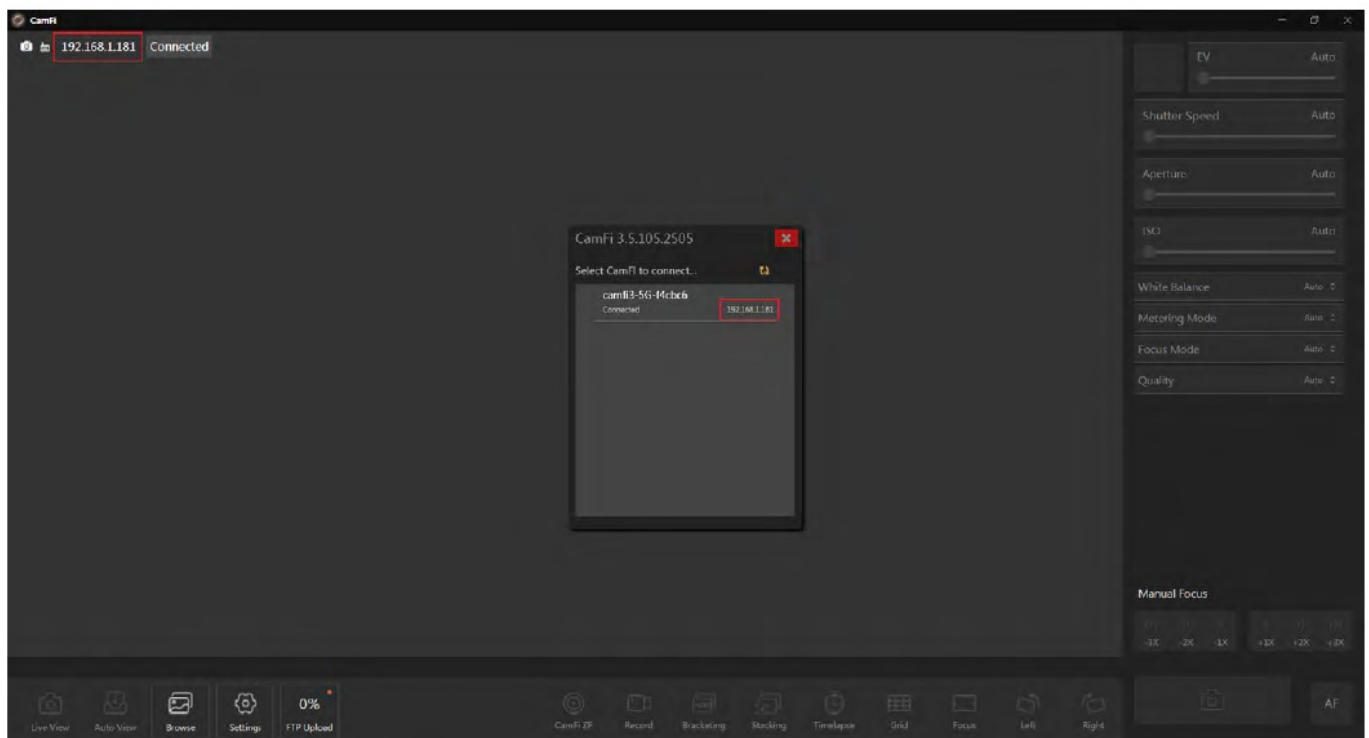
The CamFi may have bridged to the other Wi-Fi. You can check the CamFi IP via the CamFi App.



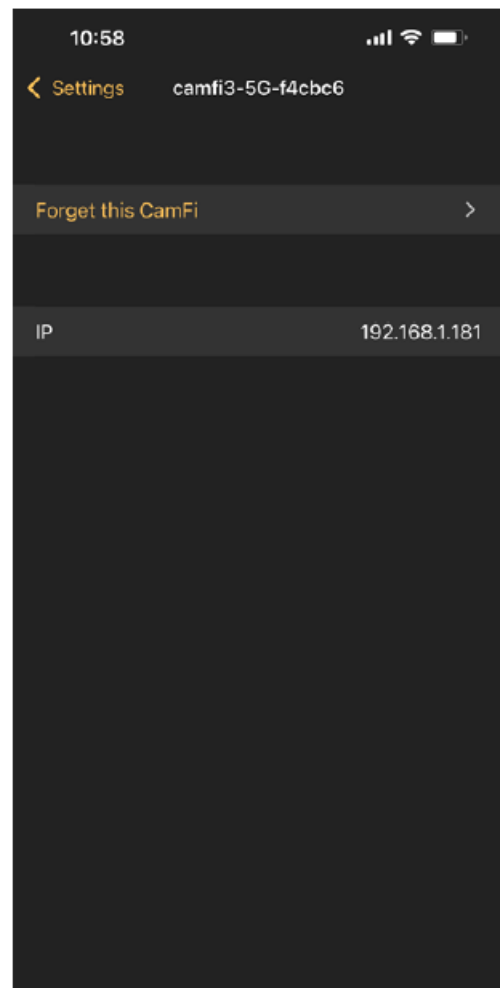
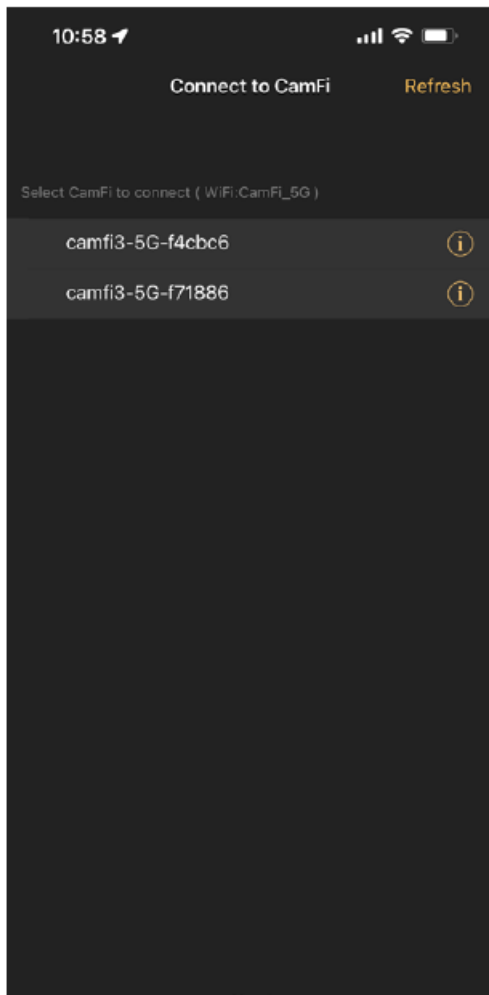
Download CamFi App

Connect your computer(mobile phone) to the CamFi bridge Wi-Fi.

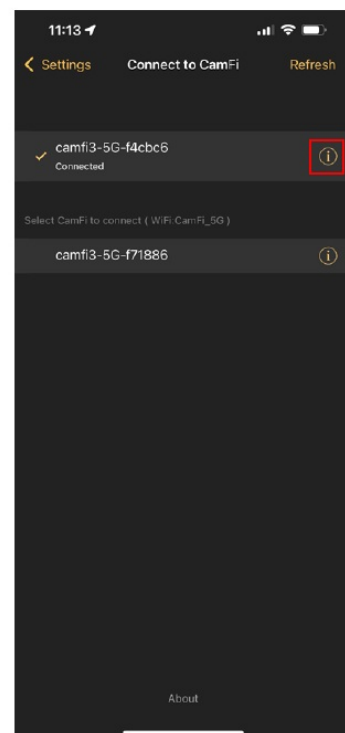
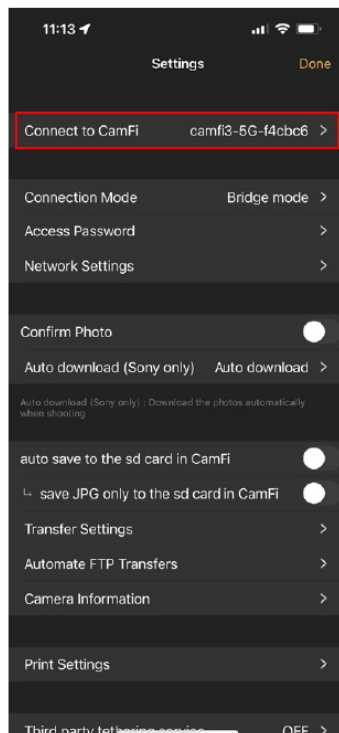
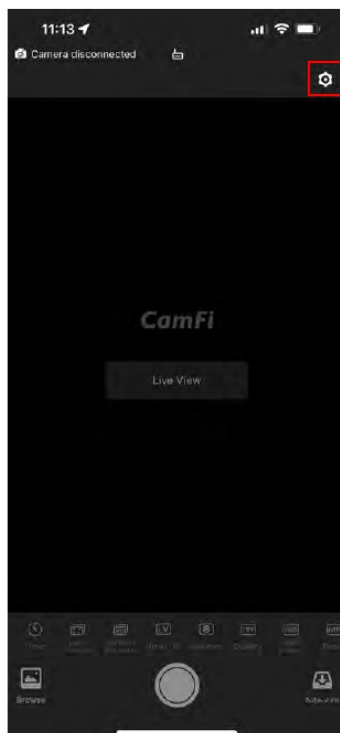
- Open the CamFi App.
- You can check the CamFi IP. On computer



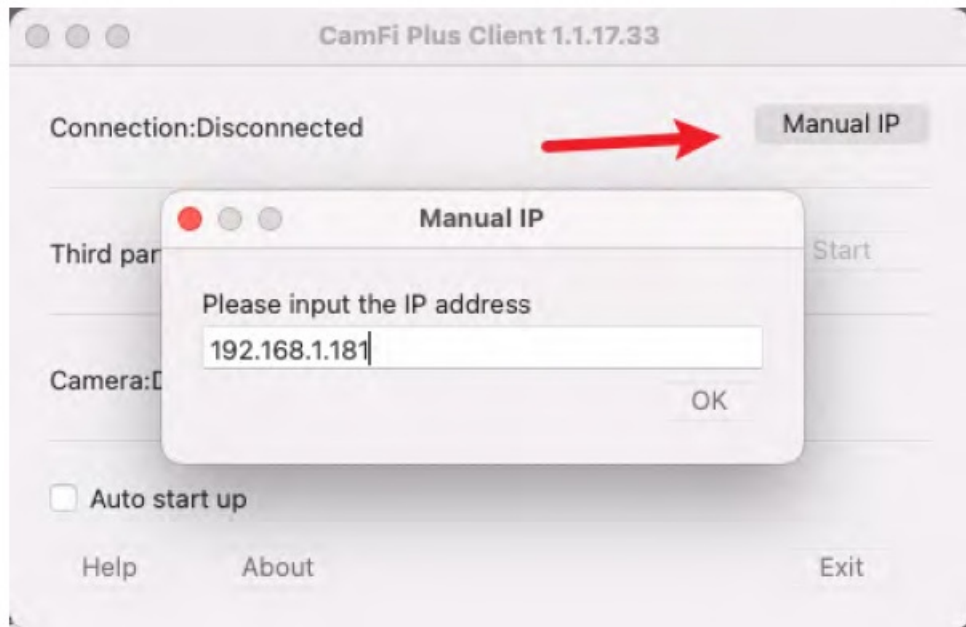
On mobile phone



Or go to “settings” – “Connect to CamFi” – “info”



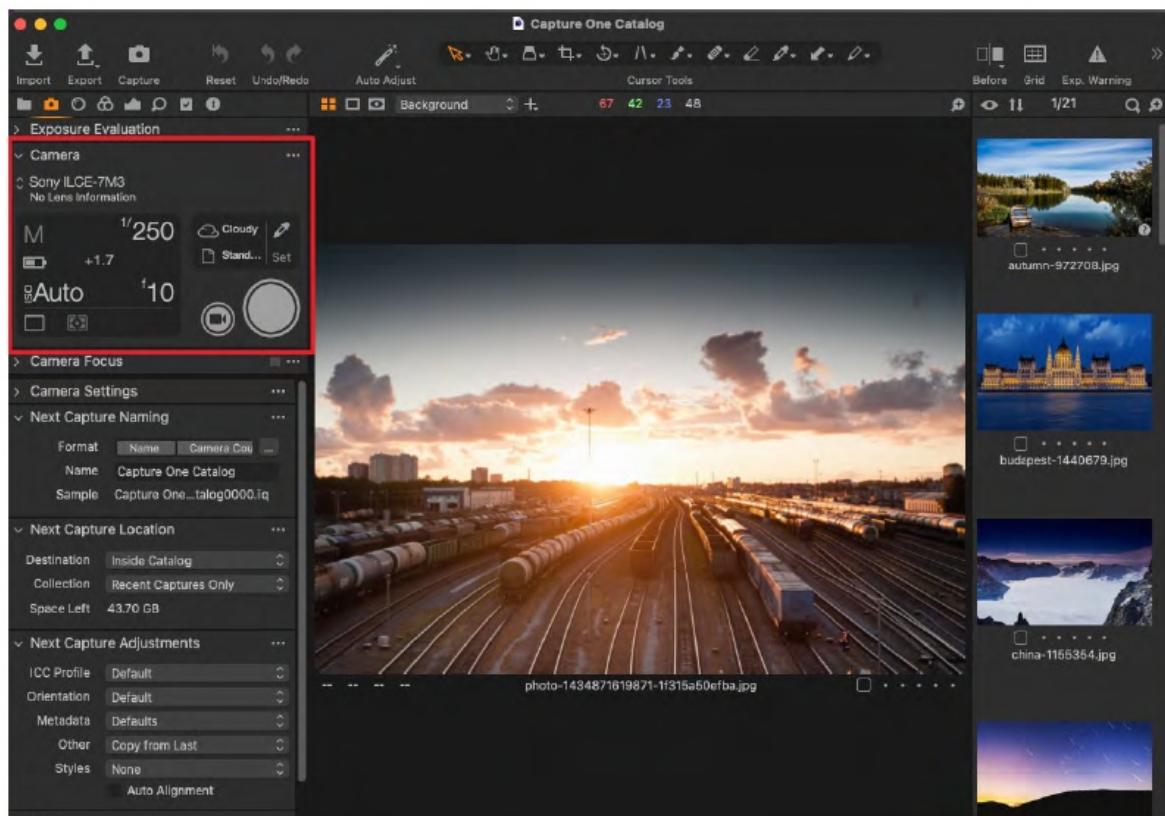
- Click the “Manual IP” on CamFi Plus Client.
- And input the CamFi IP.



Chapter 3: Using third party software

Attention

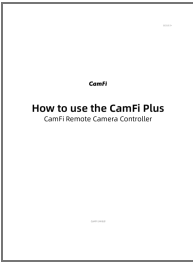
- After opening the wireless tethering mode, you will be able to remotely control the camera using Capture One, Lightroom and original camera software. CamFi official software cannot be used after it is enabled.
- Except for the connection with the camera, other USB port cannot be used.
- If the SD card is plugged into the CamFi 3, you need to take out the SD card.
- Open the third party software, such as Capture One.
- Capture One will automatically connect to the camera, just as easily as using a USB cable.



- Wireless tethering with Capture One and FUJIFILM X-T3 camera for Windows
- Wireless tethering with Capture One and FUJIFILM X-T3 camera for Mac
- Wireless tethering with Lightroom and PENTAX camera
- Wireless tethering with Capture One and Sony camera
- How to upgrade Camfi to CamFi Plus?



Documents / Resources

	<p>camFi CF101 Wireless Remote Camera Controller [pdf] User Guide</p> <p>CF101 Wireless Remote Camera Controller, CF101, Wireless Remote Camera Controller, Remote Camera Controller, Camera Controller, Controller</p>
---	---

References

-  [Download - Camera remote controller](#)