




Cameras T-CL6021LF-W44J Smart Camera with Battery User Guide

[Home](#) » [Cameras](#) » Cameras T-CL6021LF-W44J Smart Camera with Battery User Guide 

Contents

- [1 Cameras T-CL6021LF-W44J Smart Camera with Battery User](#)
- [2 Product description diagram.](#)
- [3 Connection Diagram](#)
- [4 Connecting](#)
- [5 Function Part](#)
- [6 Installation
 - \[6.1 Charging instructions\]\(#\)](#)
- [7 Help FAQ](#)
- [8 FCC Statement](#)
- [9 Documents / Resources](#)
- [10 Related Posts](#)

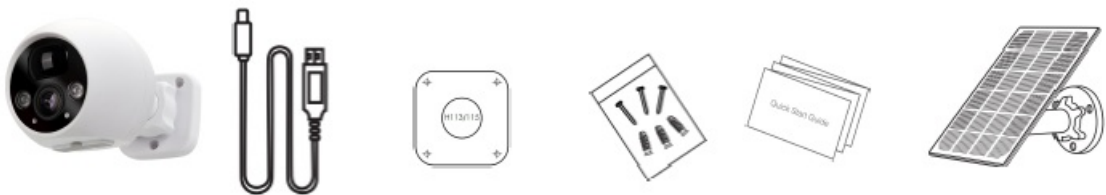
Cameras

Cameras T-CL6021LF-W44J Smart Camera with Battery User



This guidebook is intended for use by multiple models of battery cameras. Some instructions may not be applicable to all models and are for illustration purpose only.

Packing list (Actual products may vary due to different models)



Camera Charging cable Mounting sticker Screws Quick Guide Solar panel (Optional)

Product description diagram.



The indicator of LED light:

- Solid green: power on or device awakened
- Blinking green: charging
- Blinking red rapidly: matching mode
- Blinking red slowly: connecting
- Blinking red rapidly for three times: power off
- Solid red: Low battery
- Solid red and green: remote preview mode.

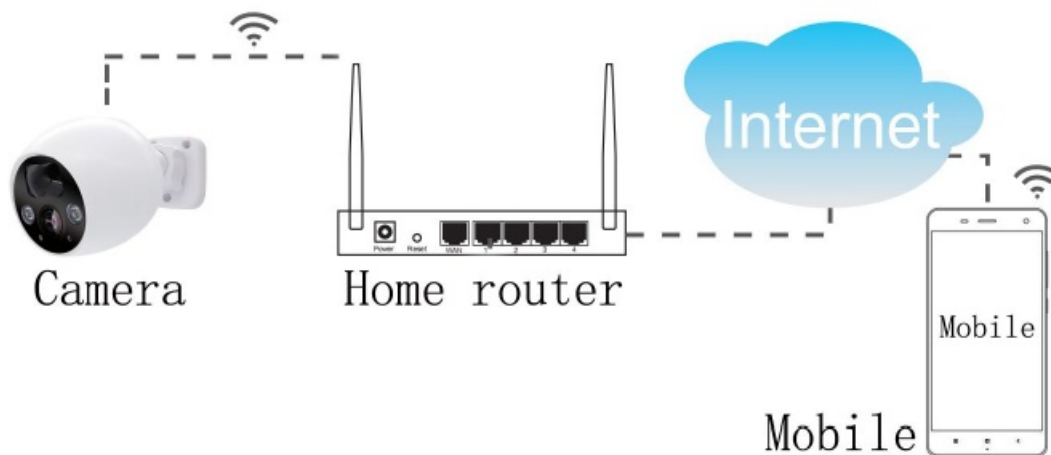
Button operation:

- Long pressing the power button for three seconds turn on/ turn off
- Long pressing the reset button for five seconds: restore to factory settings and start to pair after the prompt tone (red-light blinking rapidly)

Connection Diagram

The battery camera supports three connection ways

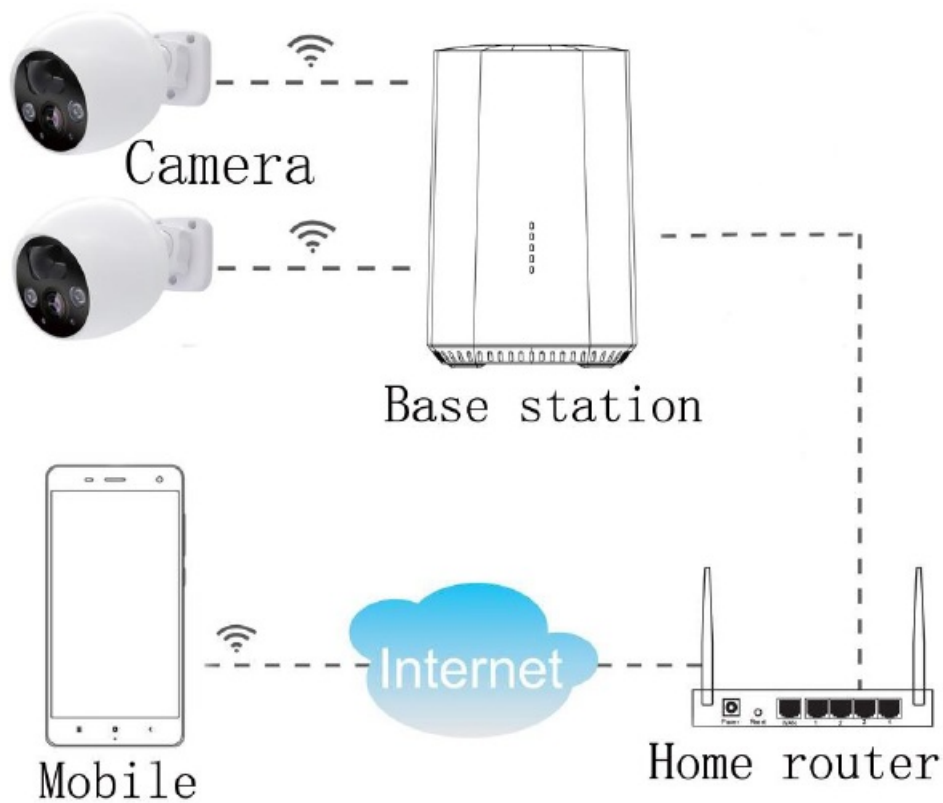
1. Connecting to the router (remote use) (Recommend)



2. Connecting to mobile phone directly (local use)



3. Pairing to wireless NVR (Base station, NVR)



Connecting

App installation

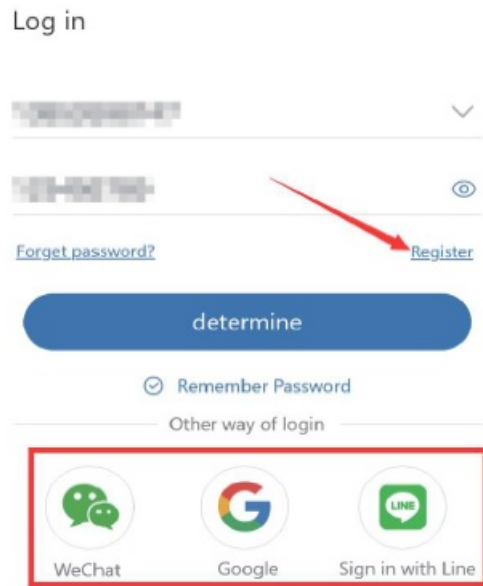
Search for "EseeCloud" in App Store or scan the QR code here to download the app.



Note: Apple mobile phone system requires iOS 9.0 or higher, and Android mobile phone system requires Android 5.1 or higher.

Log in the App

Click "Register" on the app login interface. Sign up and follow the onscreen instructions to complete the registration. Third-party login is supported.



Insert TF card to the camera

Turn off the camera before inserting the card. (If the camera you bought has an installed TF card, please skip this step.)

Power on

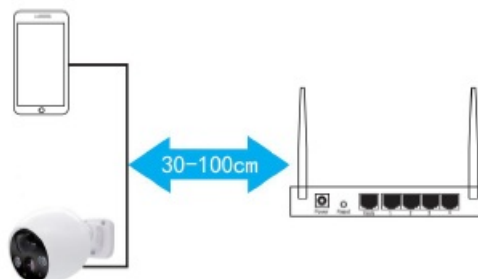
Press the ON/OFF button for 3 seconds to power on. If the button cannot be turned on, the camera may be out of power. Please fully charge it for the first time.



NOTE: DC5V power adapter is not included in package. Please use your phone charger.

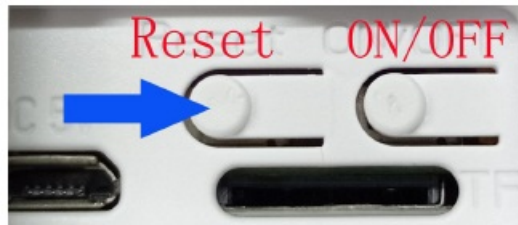
Connection Instruction

1. Place mobile phone and camera near router, and the distance among them should be 30-100cm (39 inches)

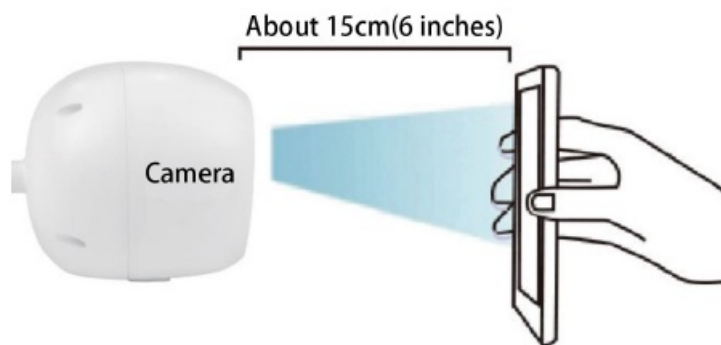
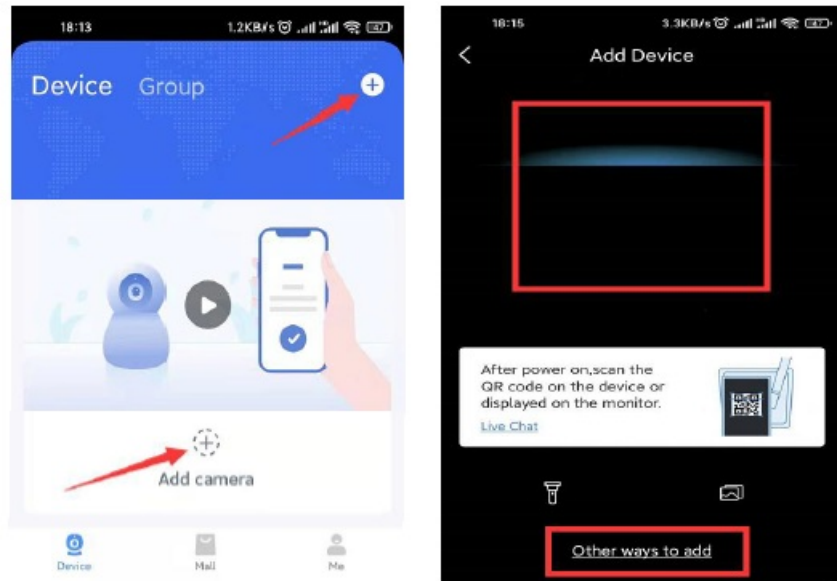


2. After the camera is turned on, the voice prompts "start configuration mode", and the red indicator starts blinking.

(If not, please long press the reset button for 5 seconds until hearing the voice prompt of "factory Reset")

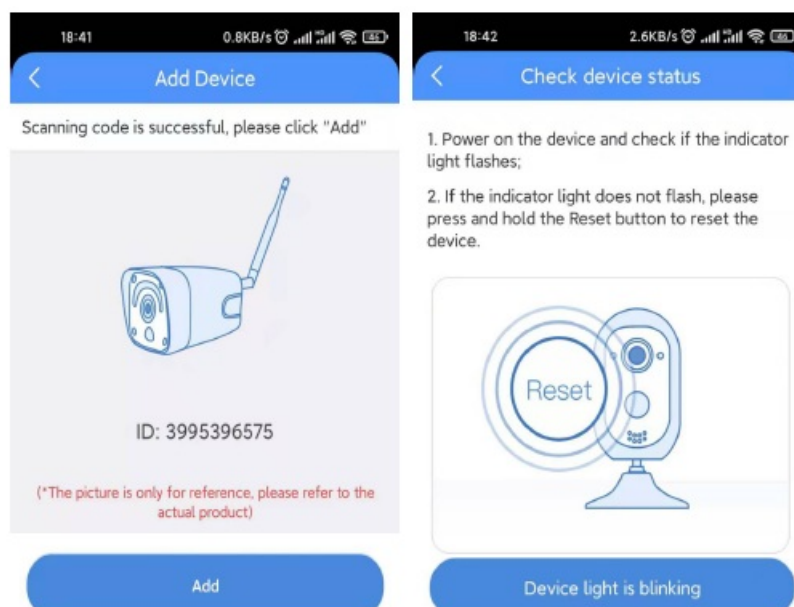


3. Open the App and click the “+” icon at the upper right corner to scan the QR code on camera label.



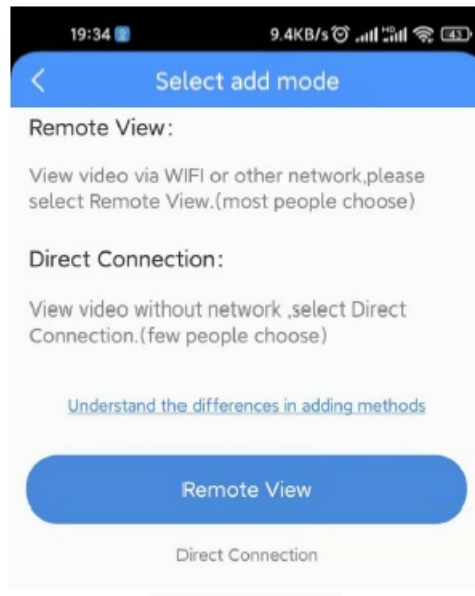
If QR code cannot be captured, click “Other ways to add” and choose “Battery camera”.

4. Click “Add” to proceed to the next step.



5. To view video remotely and connect to WiFi router, select “Remote view”.

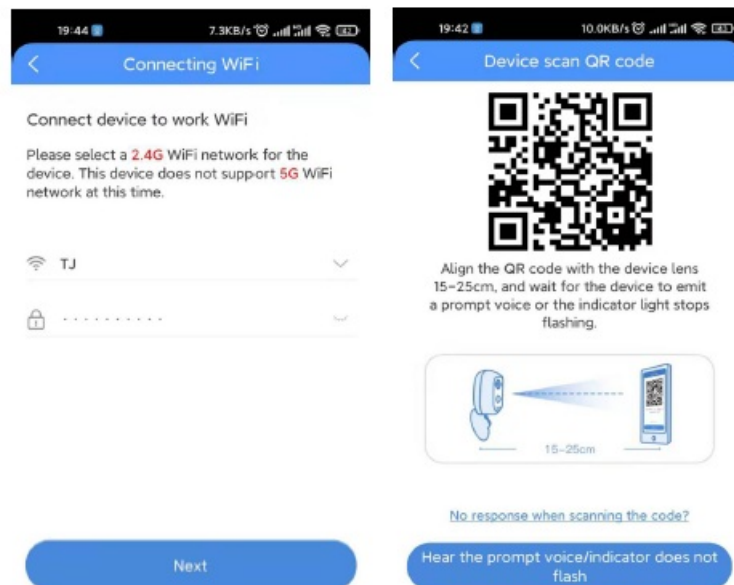
To view video without network, select Direct Connection



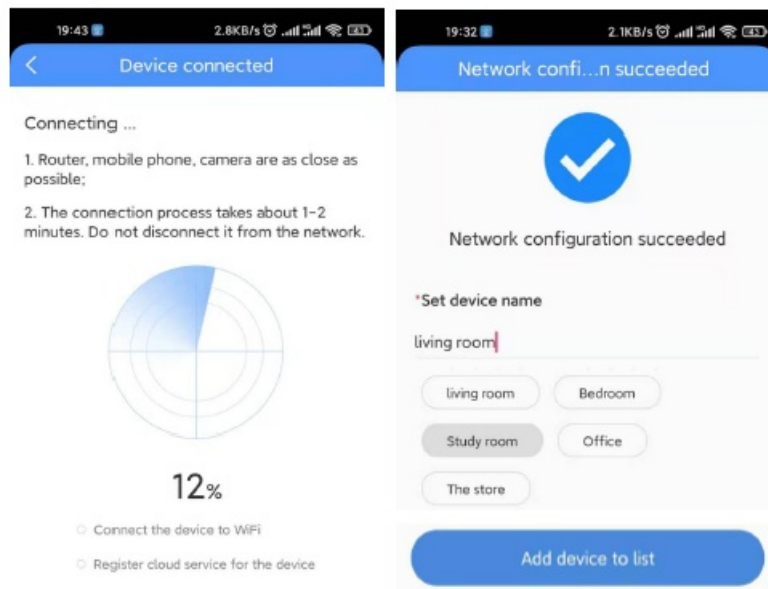
(local use only and not recommended).

Adding for Remote View Recommend

1. Click “Remote View” and select the WiFi to connect, enter the WiFi password, and then click “Next”. Follow the onscreen instructions and place the QR code displayed on the mobile phone facing the camera lens (about 6-10 inches away). Follow the prompt voice for the next step.

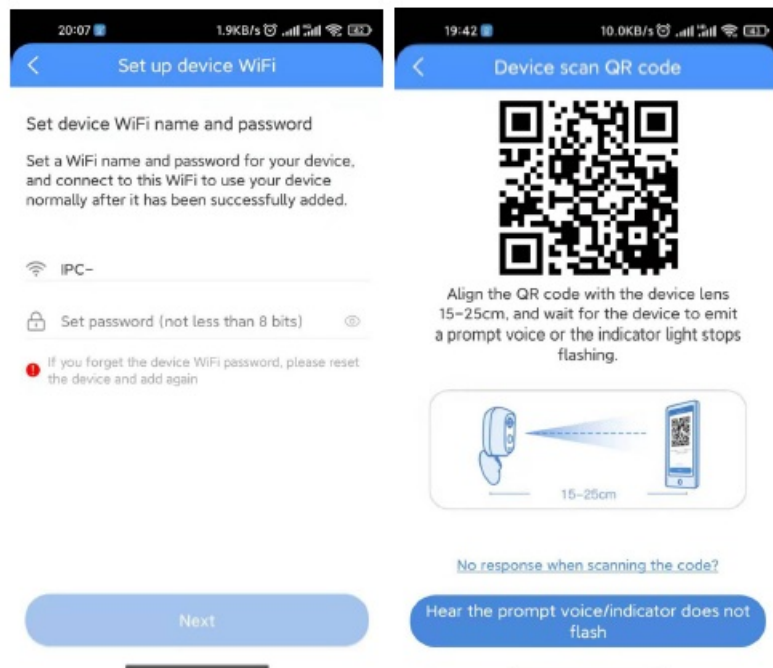


2. Wait for the network configuration to complete and set the name for the device.

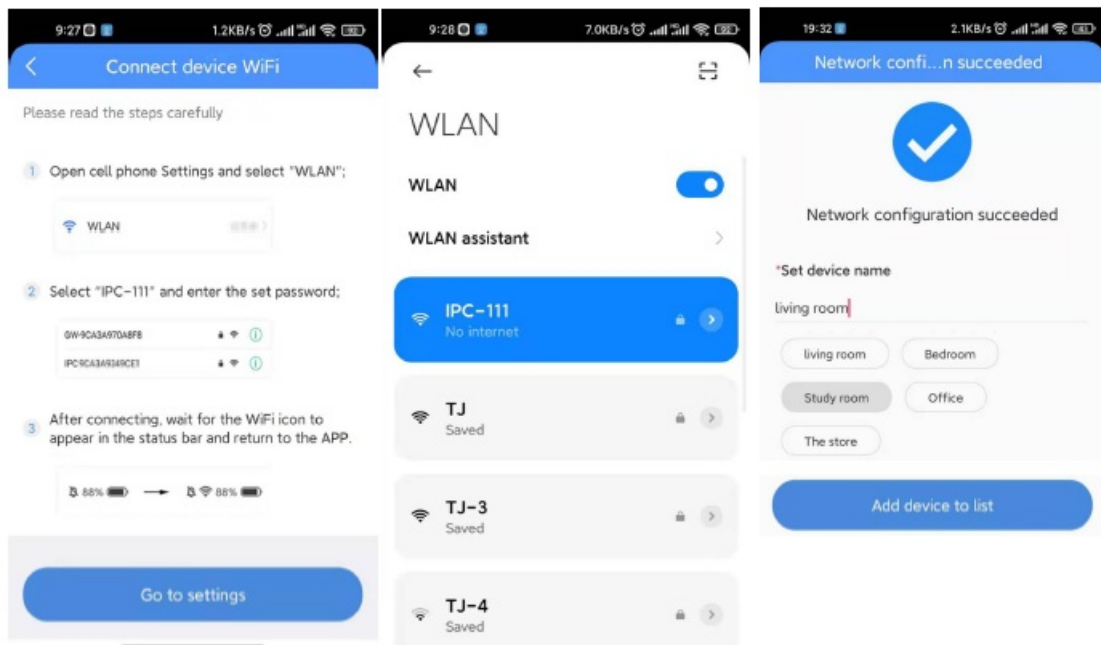


Selection of “Direct Connection” (local use only) Not Recommended

1. “Click “Direct Connection”, set the Wi-Fi password for the Wi-Fi signal that comes with the camera, and go to next step.



Follow the onscreen instructions and align the QR code on the App with the camera lens (about 6-10 inches away), then follow the prompt voice to the next step.

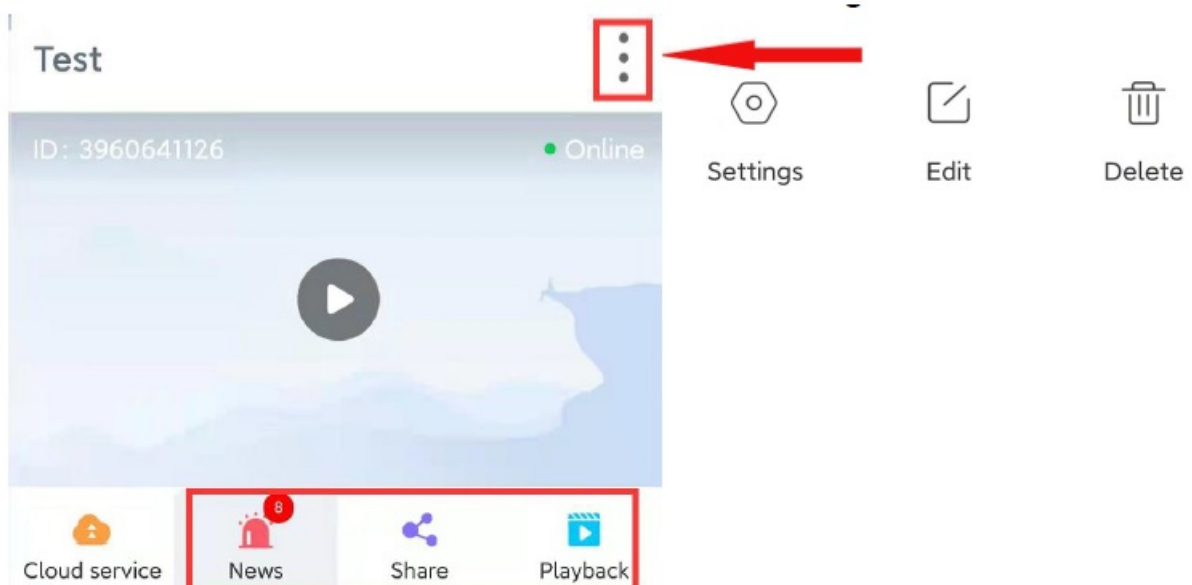


2. According to the guide interface, after connecting the mobile phone to the WiFi that comes with the camera, return to the App. Name the camera and complete the set up.

Note: The direct connection mode can only be used when mobile phone and camera's WiFi keep connected.

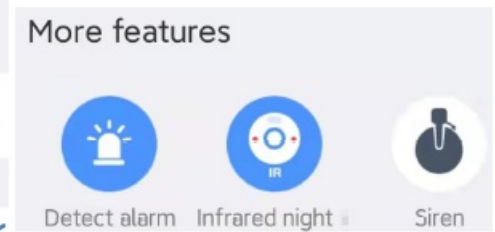
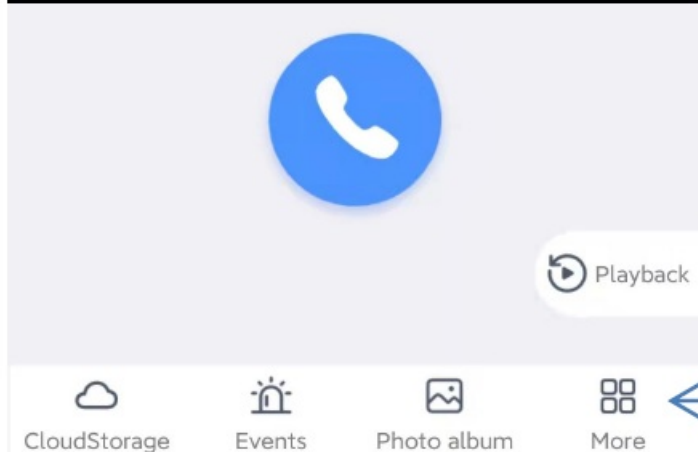
Function Part







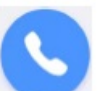





Preview, playback, alarm notification, function setting



	Play, Enter the preview interface		Alarm notification, View alarm screenshot / video
	Share, share the device with family.		Playback video
	Settings and Edit, Delete		

1. Real time Preview

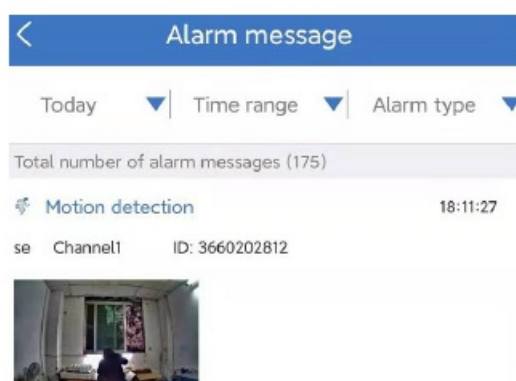


Icon	explain	Icon	explain
	SD/HD definition switch		Sound, hear the voice from the camera.
	Screenshot, save the current screenshot to your phone.		Recording, save the current video to your phone.
	Full screen, full screen view.		Menu setting
	speak to the camera side.		Video playback.
	More features		Siren
	Light, switched to infrared light (IR) or white light on)		Detect AI switch, opened by default. After closed, it will not be triggered.

2. Alarm Notification

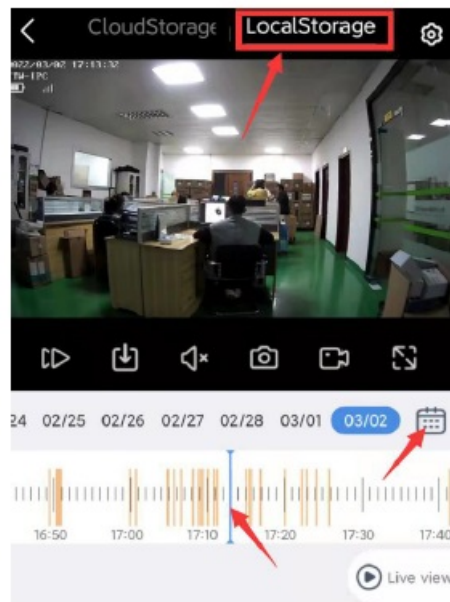
The alarm message will be pushed to the phone if the camera is triggered.

Click the screenshot on the message list to see the alarm video.



3. Video Playback

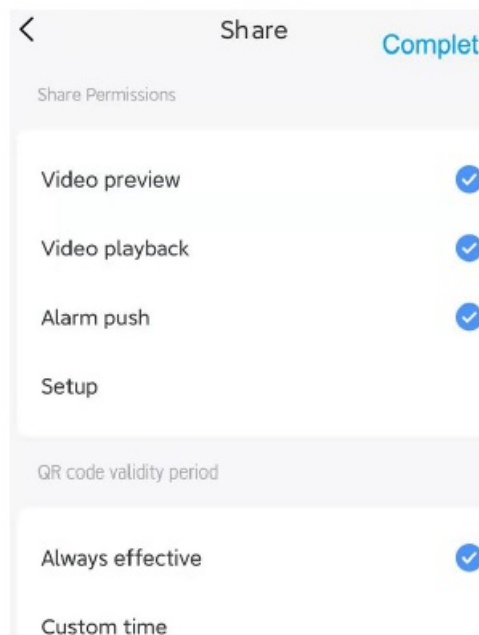
After entering the video playback interface, select the Local Storage at the red arrow, then select the date at the below arrow, and finally drag the time line, then can play the video at that time.



Click You can download the video to your phone.

(If there is no recording, refer to the page 11 of the manual,Storage settings.or FAQ5)

4. Share the device



After entering the sharing interface, select the permissions and the validity period of the QR code for sharing.

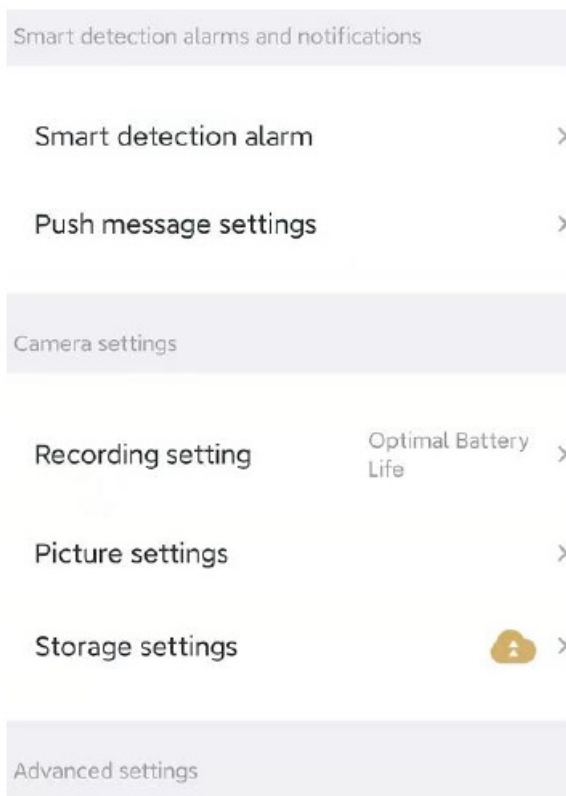
Click the “Comple ” on the upper right corner, share the generated QR code to other people.

Other people need to download the APP, register a new account and log in,then scan the QR code you shared to add the device successfully.

5. Menu setting

Push message settings:

The APP pushes alarm messages, which is enabled by default.

**Recording settings:**

There are three recording modes to choose from (optimal battery life,optimal surveillance,uninterrupted recording). motion detection is enabled by default, and you can choose to 'Record only the scene where people appear'

Picture settings:

Night vision mode and Device call volume

Advanced settings:

You can view the status of the indicator light and time settings, etc. Camera time settings. The camera time can be synchronized and the time zone can be changed.

Smart detection alarm: Intelligent detection alarm (open by default, if it is closed, it can only be actively previewed through the APP,and it will not record or push alarm messages)



Motion detection sensitivity: try lowering the sensitivity if detection alarms are too frequent.

Siren setting:

when turned on, the camera will sound the alarm sound when triggered.

Storage settings:

Check the TF card status. The device defaults to loop recording. (If recording status is normal, the remaining available capacity does not matter.)

(If there is no video, check the status of the TF card, if the status is abnormal, click to Format the memory card.)

Local storage space

Used capacity: 3%

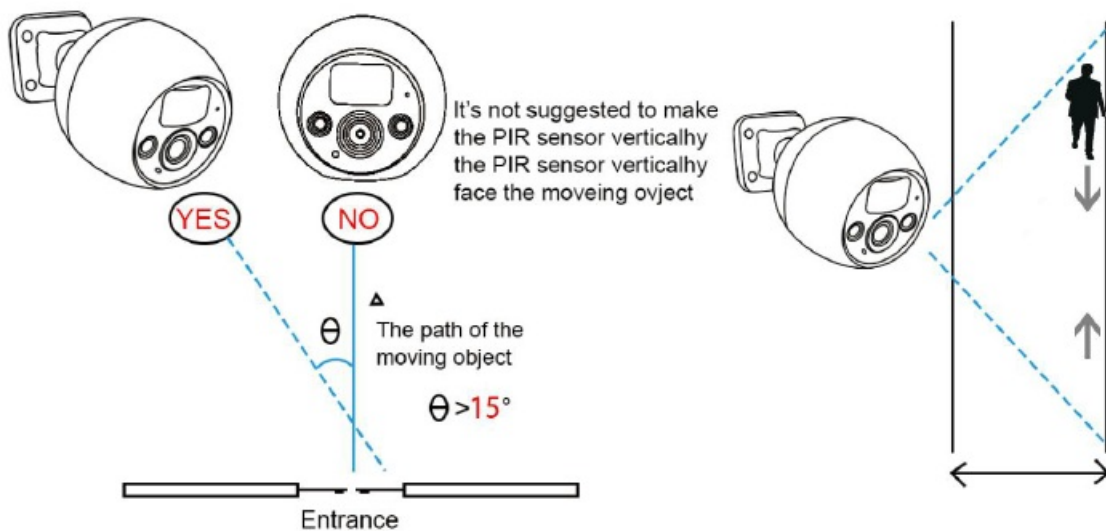
In good
condition >

Download local video files >

Format the memory card >

Installation

Surveillance Area: When installing the camera, the PIR sensor should not be vertically aligned with the moving objects, as it may not be sensitive to movement. It is recommended that the camera be tilted more than 15 degrees to capture motions.

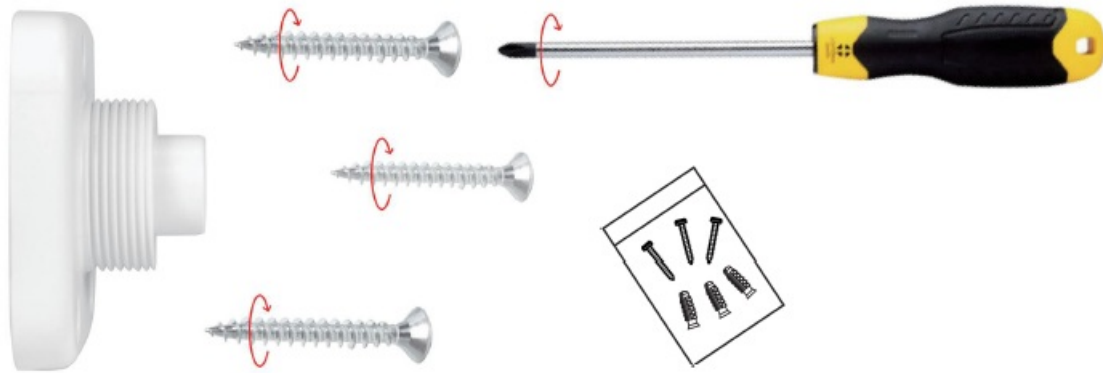


Notice: PIR sensor is sensitive to hot and cold air flow.

- Avoid installing the camera at a place where airflow is stirred up. For example: the air outlet of the air conditioner, the cooling vent of equipment, locations next to fans or curtain, etc.
- Do not install the camera directly against glass or mirror.
- The installation height of the camera should be about 8-10 feet.
- Do not install the camera upside down.

Installation: Install the camera on the wall. Put the sticker on the wall, punch holes and then nail the rubber plugs. Screw on the camera bracket and adjust the camera tilt angle.





Charging instructions

During use, the camera needs to be charged when the low battery indicator shows or the App pushes low battery message. (**NOTE:** DC5V power adapter is not included in package. Please use your phone charger.)

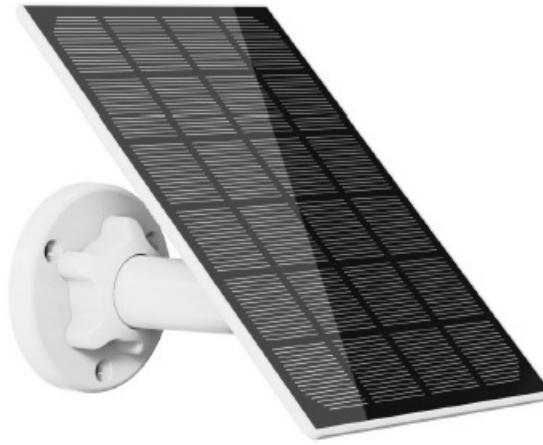


1. Insert the power supply into the USB port of the camera.
2. When charging, the green indicator light of the camera will be continuous blinking. You can also confirm the charging status by the charging icon.

At the position of the arrow of the USB port, be careful not to remove the entire silicone pad, only the rubber pad of the USB port.



If there is a solar panel, pay attention to the orientation of the solar panel when installing it, and use the best position where you can get the most sunlight every day. The installation angle should be tilted a little, do not lay flat to avoid water or snow accumulation.



Help FAQ

Q1 Why is the pairing network unsuccessful?

1. Please make sure that the distance among the camera, the router and the mobile phone should be close enough when configuring the network.
2. Please make sure that the WIFI signal connected to the mobile phone must be 2.4G, not a 5G WIFI signal.
3. Please check whether the WIFI name and password are correct.
4. Please long press the reset button for 5 seconds and try again after restoring the camera to the factory.

Q2 How to make sure that the WIFI network connection between the camera and the router is normal?

1. Actively trigger the PIR in front of the camera, wait for about 5-10 seconds. If the red light of the camera flashes, it means that the camera cannot connect to the router smoothly.
2. Open the APP, enter the camera's setting menu, and check the network signal status.



test

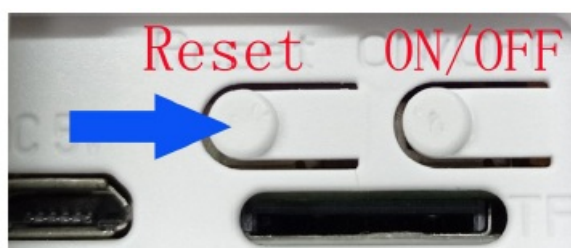
Battery: 59% Signal: Strong

ID: 3995500429

Firmware:3.6.61.0

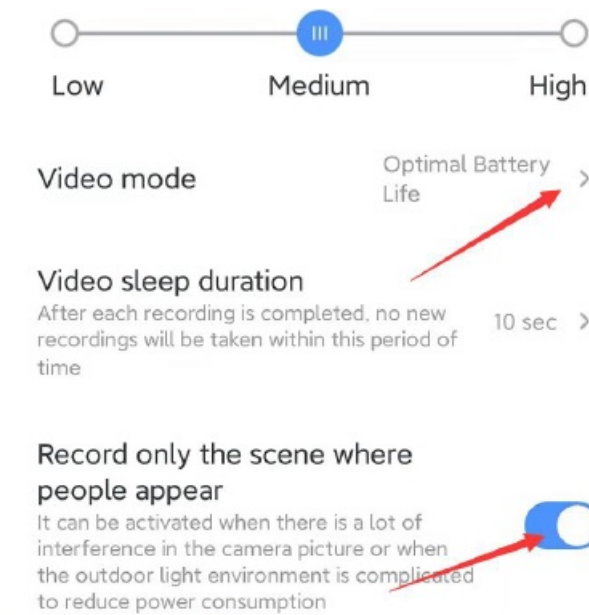
Q3 Why is the camera offline?

1. It may caused by router WIFI signal interference or network reasons. Power off and restart the optical modem, router or camera.
2. The camera maybe too far away from the WIFI router, try to get the camera next to the WIFI router.
3. Whether the WIFI password has been changed, try to reset the camera and try pairing again.



Q4 Why does the battery drain quickly?

1. Check the daily triggered alarm messages. If there are more false triggers, please lower the trigger sensitivity in the settings.



Battery life reference time

PIR human body detection and video recording technology is adopted

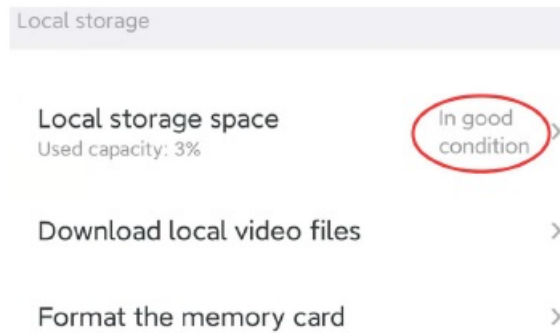
 storehouse	Alarm 3-5 times / day for about 180 days
 home	Alarm 20 times / day for about 30 days
 shop	Alarm 30 times / day for about 20 days
 office	Alarm 50 times / day for about 10 days

2. Go into the setting menu and change to the 'Optimal Battery Life' and 'Record only the scene where people appear'.
3. Check the signal strength of the camera. If the signal is too weak, try to change the position of the camera or router to improve the signal transmission between them.

Q5 Why is there no playback?

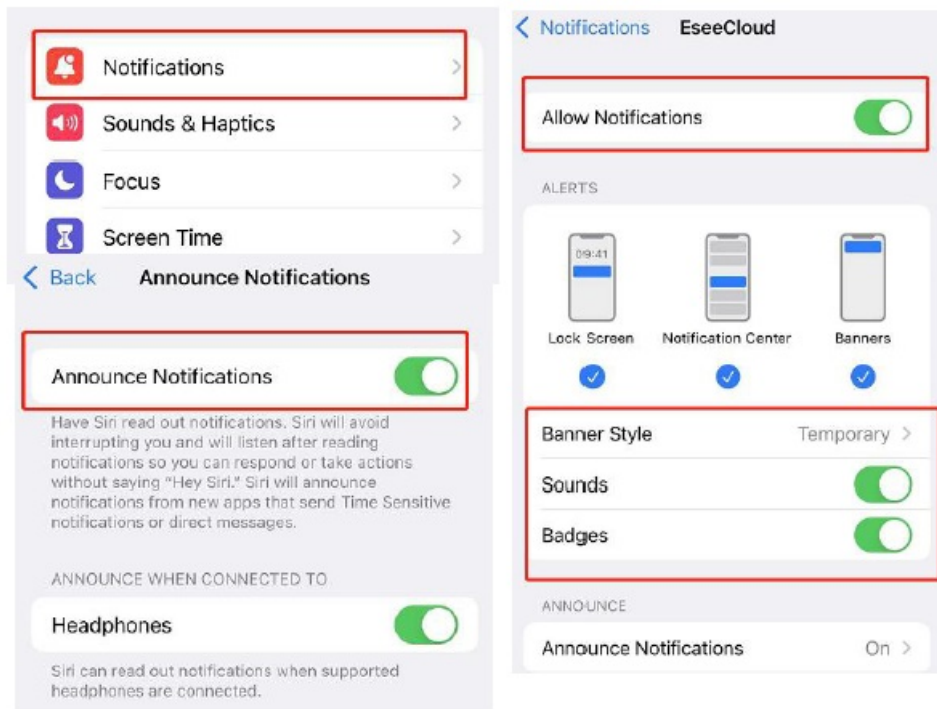
1. Make sure that the TF card has been inserted into the camera and try to turn on/off the camera.

2. Enter the camera settings menu to check the storage status 'in good condition' (if the status is abnormal, click to "Format the memory card".)



Q6 Why my phone does not have an alarm push function or two way audio?

1. Check your mobile phone permission settings, and make sure that enable the notification permission of "EeeCloud" App.
2. Open your phone's Settings > Apps and Notifications, select Apps and Notification Management respectively, find the "EeeCloud" app, and turn on all permissions.



FCC Statement

This equipment has been tested and found to comply with the limits for a Class B digital device, pursuant to part 15 of the FCC rules. These limits are designed to provide reasonable protection against harmful interference in a residential installation. This equipment generates, uses and can radiate radio frequency energy and, if not installed and used in accordance with the instructions, may cause harmful interference to radio communications. However, there is no guarantee that interference will not occur in a particular installation. If this equipment does cause harmful interference to radio or television reception, which can be determined by turning the equipment off and on, the user is encouraged to try to correct the interference by one or more of the following measures:

- Reorient or relocate the receiving antenna.
- Increase the separation between the equipment and receiver.

- Connect the equipment into an outlet on a circuit different from that to which the receiver is connected.
- Consult the dealer or an experienced radio/TV technician for help.

To assure continued compliance, any changes or modifications not expressly approved by the party.

Responsible for compliance could void the user’s authority to operate this equipment. (Example- use only shielded interface cables when connecting to computer or peripheral devices).


This equipment complies with Part 15 of the FCC Rules. Operation is subject to the following two conditions:

1. This device may not cause harmful interference, and
2. This device must accept any interference received, including interference that may cause undesired operation.

FCC Radiation Exposure Statement:

The equipment complies with FCC Radiation exposure limits set forth for uncontrolled enviroment. This equipment should be installed and operated with minimum distance 20cm between the radiator and your body.

Documents / Resources

<div><div>Quick Guide</div><div><div>Smart Camera with Battery</div><div></div><div><div>VT-1</div><div>The guidebook is intended for use for multiple models of battery-powered. Some instructions may not be applicable to all models and are for illustration purposes only.</div></div></div></div>	<div><div>Cameras T-CL6021LF-W44J Smart Camera with Battery [pdf] User Guide</div><div>TCL6021LFW44J, 2A762-TCL6021LFW44J, 2A762TCL6021LFW44J, T-CL6021LF-W44J, Smart Camera with Battery, T-CL6021LF-W44J Smart Camera with Battery, Smart Camera</div></div>
--	--