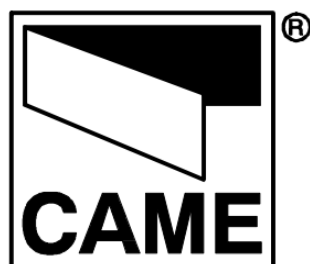




Contents [[hide](#)]

- [1 CAME TFM 2 and 4 Channel Transmitters](#)
- [2 Product Information](#)
- [3 Product Usage Instructions](#)
- [4 OVERVIEW](#)
- [5 KEYPRESS SEQUENCE TO CODE](#)
- [6 CHANNELS TABLE](#)
- [7 FIRST SET OF KEYS](#)
- [8 EXAMPLE](#)
- [9 TECHNICAL SPECIFICATIONS](#)
- [10 FAQ](#)
- [11 Documents / Resources](#)
 - [11.1 References](#)



CAME TFM 2 and 4 Channel Transmitters



Product Information

Specifications

- **Transmitter Channels:** 2/4/8
- **Coding:** 20-bit code and 4-bit channel code

Product Usage Instructions

Coding of 2/4 Channel Transmitters

1. Fit the jumper to the transmitter strip (pos. A).
2. Press the key to be coded.
3. In sequence, press P1 (ON) and P2 (OFF) to memorise the 20-bit code and then the 4-bit channel code (refer to EXAMPLE).
4. Remove the jumper (pos. B).
5. Repeat steps 1 to 4 for each key.

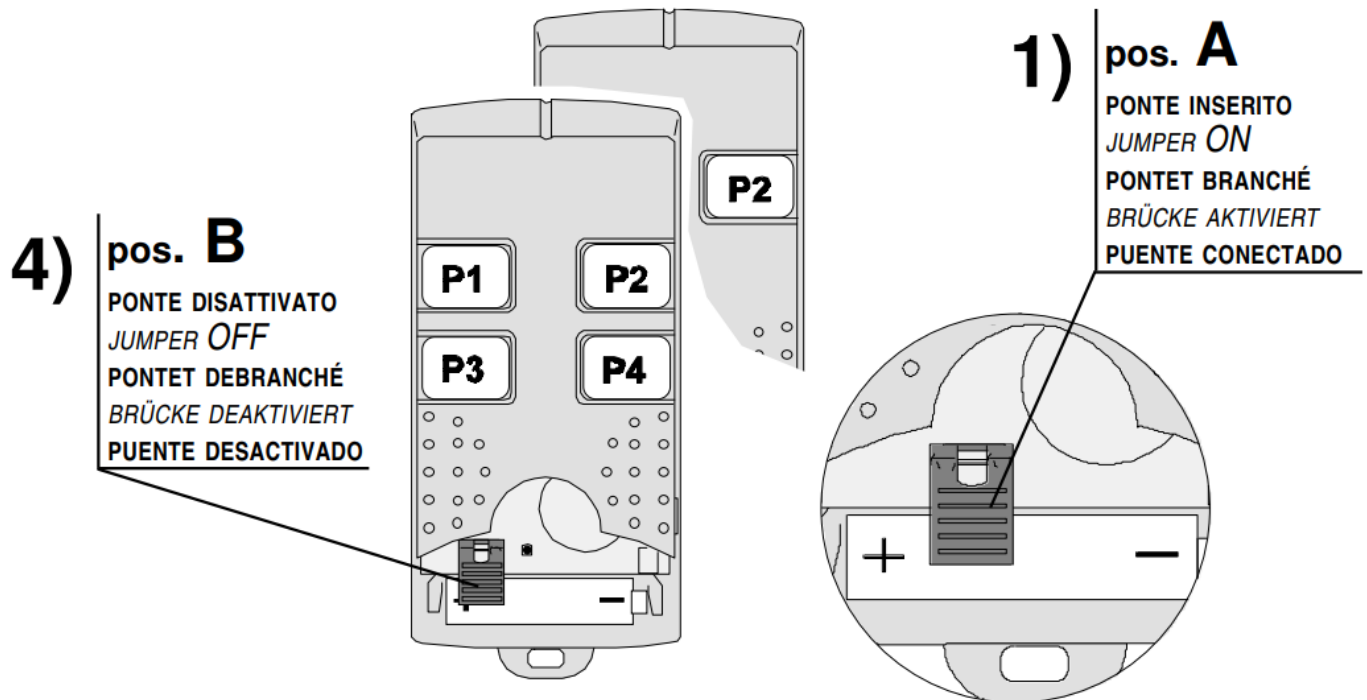
Coding of 8 Channel Transmitters

1. Follow the same procedure as for the 4-channel setting (avoid using channels 13, 14, 15, and 16).
2. Ensure that the selector switch on the left edge is positioned correctly.

3. For keys P5, P6, P7, and P8, they are coded automatically (refer to example and table C).
4. To activate these keys, move the selector to the position shown in Figure B.

OVERVIEW

coding of the 2/4 CHANNEL transmitter

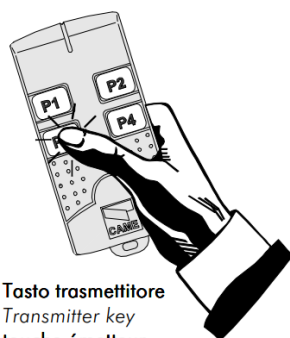


1. Fit the jumper to the transmitter strip (pos. A);
2. Press the key to be coded.
3. In sequence, press P1 (ON) and P2 (OFF) to memorise the 20-bit code and then the 4-bit channel code (see EXAMPLE);
4. Remove the jumper (pos. B).
 - Repeat steps 1) to 4) for each key.

KEYPRESS SEQUENCE TO CODE

EXAMPLE: KEYPRESS SEQUENCE TO CODE P3 KEY ON 4 CHANNEL TRANSMITTER

2) P3



Tasto trasmettitore
Transmitter key
touche émetteur
Funksendertaste
Tecla transmisor

3)

P1-P1-P2-P2-P1-P1-P1-P2-P1-P1-P2-P1-P2-P1-P1-P1-P2

P1-P2-P2-P1

P1	<input checked="" type="checkbox"/>	<input checked="" type="checkbox"/>	<input type="checkbox"/>	<input type="checkbox"/>	<input checked="" type="checkbox"/>	<input checked="" type="checkbox"/>	<input checked="" type="checkbox"/>	<input type="checkbox"/>	<input type="checkbox"/>	<input type="checkbox"/>	<input type="checkbox"/>	<input checked="" type="checkbox"/>	<input checked="" type="checkbox"/>	<input type="checkbox"/>	<input type="checkbox"/>	<input checked="" type="checkbox"/>	<input checked="" type="checkbox"/>	<input type="checkbox"/>	<input type="checkbox"/>	ON	<input checked="" type="checkbox"/>	<input type="checkbox"/>	<input type="checkbox"/>	<input checked="" type="checkbox"/>	ON
P2	<input type="checkbox"/>	<input type="checkbox"/>	<input checked="" type="checkbox"/>	<input checked="" type="checkbox"/>	<input type="checkbox"/>	<input type="checkbox"/>	<input type="checkbox"/>	<input checked="" type="checkbox"/>	<input type="checkbox"/>	<input type="checkbox"/>	<input checked="" type="checkbox"/>	<input type="checkbox"/>	<input type="checkbox"/>	<input checked="" type="checkbox"/>	<input type="checkbox"/>	<input type="checkbox"/>	<input type="checkbox"/>	<input type="checkbox"/>	<input type="checkbox"/>	OFF	<input type="checkbox"/>	<input checked="" type="checkbox"/>	<input checked="" type="checkbox"/>	<input type="checkbox"/>	OFF
	1	2	3	4	5	6	7	8	9	10	11	12	13	14	15	16	17	18	19	20		1	2	3	4

Codice di esempio
Example code
Code d'exemple
Codebeispiel
Código de ejemplo

Canale 10
Channel 10
Canal 10
Kanal 10
Canal 10

- IMPORTANT!** In order to facilitate and store the coding procedure for the transmitters, mark the settings on the 4 diagrams shown opposite (choose the channel settings from those in the table below).

TASTO
KEY
TOUCHE
TASTE
TECLA

CODICE
CODE
CODE
CODE
CODIGO

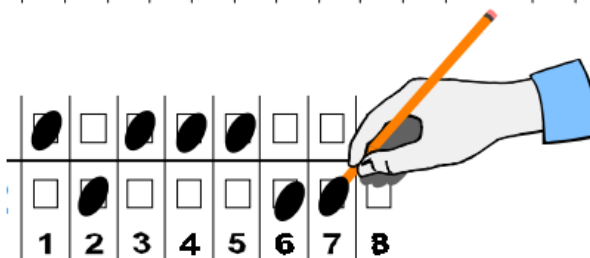
CANALE
CHANNEL
CANAL
KANAL
CANAL

P ...	<input type="checkbox"/>	<input type="checkbox"/>	<input type="checkbox"/>	<input type="checkbox"/>	<input type="checkbox"/>	<input type="checkbox"/>	<input type="checkbox"/>	<input type="checkbox"/>	<input type="checkbox"/>	<input type="checkbox"/>	<input type="checkbox"/>	<input type="checkbox"/>	<input type="checkbox"/>	<input type="checkbox"/>	<input type="checkbox"/>	<input type="checkbox"/>	<input type="checkbox"/>	<input type="checkbox"/>	<input type="checkbox"/>	ON	<input type="checkbox"/>	<input type="checkbox"/>	<input type="checkbox"/>	<input type="checkbox"/>	ON
	<input type="checkbox"/>	<input type="checkbox"/>	<input type="checkbox"/>	<input type="checkbox"/>	<input type="checkbox"/>	<input type="checkbox"/>	<input type="checkbox"/>	<input type="checkbox"/>	<input type="checkbox"/>	<input type="checkbox"/>	<input type="checkbox"/>	<input type="checkbox"/>	<input type="checkbox"/>	<input type="checkbox"/>	<input type="checkbox"/>	<input type="checkbox"/>	<input type="checkbox"/>	<input type="checkbox"/>	<input type="checkbox"/>	OFF	<input type="checkbox"/>	<input type="checkbox"/>	<input type="checkbox"/>	<input type="checkbox"/>	OFF
	1	2	3	4	5	6	7	8	9	10	11	12	13	14	15	16	17	18	19	20		1	2	3	4

P ...	<input type="checkbox"/>	<input type="checkbox"/>	<input type="checkbox"/>	<input type="checkbox"/>	<input type="checkbox"/>	<input type="checkbox"/>	<input type="checkbox"/>	<input type="checkbox"/>	<input type="checkbox"/>	<input type="checkbox"/>	<input type="checkbox"/>	<input type="checkbox"/>	<input type="checkbox"/>	<input type="checkbox"/>	<input type="checkbox"/>	<input type="checkbox"/>	<input type="checkbox"/>	<input type="checkbox"/>	<input type="checkbox"/>	ON	<input type="checkbox"/>	<input type="checkbox"/>	<input type="checkbox"/>	<input type="checkbox"/>	ON
	<input type="checkbox"/>	<input type="checkbox"/>	<input type="checkbox"/>	<input type="checkbox"/>	<input type="checkbox"/>	<input type="checkbox"/>	<input type="checkbox"/>	<input type="checkbox"/>	<input type="checkbox"/>	<input type="checkbox"/>	<input type="checkbox"/>	<input type="checkbox"/>	<input type="checkbox"/>	<input type="checkbox"/>	<input type="checkbox"/>	<input type="checkbox"/>	<input type="checkbox"/>	<input type="checkbox"/>	<input type="checkbox"/>	OFF	<input type="checkbox"/>	<input type="checkbox"/>	<input type="checkbox"/>	<input type="checkbox"/>	OFF
	1	2	3	4	5	6	7	8	9	10	11	12	13	14	15	16	17	18	19	20		1	2	3	4

P ...	<input type="checkbox"/>	<input type="checkbox"/>	<input type="checkbox"/>	<input type="checkbox"/>	<input type="checkbox"/>	<input type="checkbox"/>	<input type="checkbox"/>	<input type="checkbox"/>	<input type="checkbox"/>	<input type="checkbox"/>	<input type="checkbox"/>	<input type="checkbox"/>	<input type="checkbox"/>	<input type="checkbox"/>	<input type="checkbox"/>	<input type="checkbox"/>	<input type="checkbox"/>	<input type="checkbox"/>	<input type="checkbox"/>	ON	<input type="checkbox"/>	<input type="checkbox"/>	<input type="checkbox"/>	<input type="checkbox"/>	ON
	<input type="checkbox"/>	<input type="checkbox"/>	<input type="checkbox"/>	<input type="checkbox"/>	<input type="checkbox"/>	<input type="checkbox"/>	<input type="checkbox"/>	<input type="checkbox"/>	<input type="checkbox"/>	<input type="checkbox"/>	<input type="checkbox"/>	<input type="checkbox"/>	<input type="checkbox"/>	<input type="checkbox"/>	<input type="checkbox"/>	<input type="checkbox"/>	<input type="checkbox"/>	<input type="checkbox"/>	<input type="checkbox"/>	OFF	<input type="checkbox"/>	<input type="checkbox"/>	<input type="checkbox"/>	<input type="checkbox"/>	OFF
	1	2	3	4	5	6	7	8	9	10	11	12	13	14	15	16	17	18	19	20		1	2	3	4

P ...	<input type="checkbox"/>	<input type="checkbox"/>	<input type="checkbox"/>	<input type="checkbox"/>	<input type="checkbox"/>	<input type="checkbox"/>	<input type="checkbox"/>	<input type="checkbox"/>	<input type="checkbox"/>	<input type="checkbox"/>	<input type="checkbox"/>	<input type="checkbox"/>	<input type="checkbox"/>	<input type="checkbox"/>	<input type="checkbox"/>	<input type="checkbox"/>	<input type="checkbox"/>	<input type="checkbox"/>	<input type="checkbox"/>	ON	<input type="checkbox"/>	<input type="checkbox"/>	<input type="checkbox"/>	<input type="checkbox"/>	ON
	<input type="checkbox"/>	<input type="checkbox"/>	<input type="checkbox"/>	<input type="checkbox"/>	<input type="checkbox"/>	<input type="checkbox"/>	<input type="checkbox"/>	<input type="checkbox"/>	<input type="checkbox"/>	<input type="checkbox"/>	<input type="checkbox"/>	<input type="checkbox"/>	<input type="checkbox"/>	<input type="checkbox"/>	<input type="checkbox"/>	<input type="checkbox"/>	<input type="checkbox"/>	<input type="checkbox"/>	<input type="checkbox"/>	OFF	<input type="checkbox"/>	<input type="checkbox"/>	<input type="checkbox"/>	<input type="checkbox"/>	OFF
	1	2	3	4	5	6	7	8	9	10	11	12	13	14	15	16	17	18	19	20		1	2	3	4

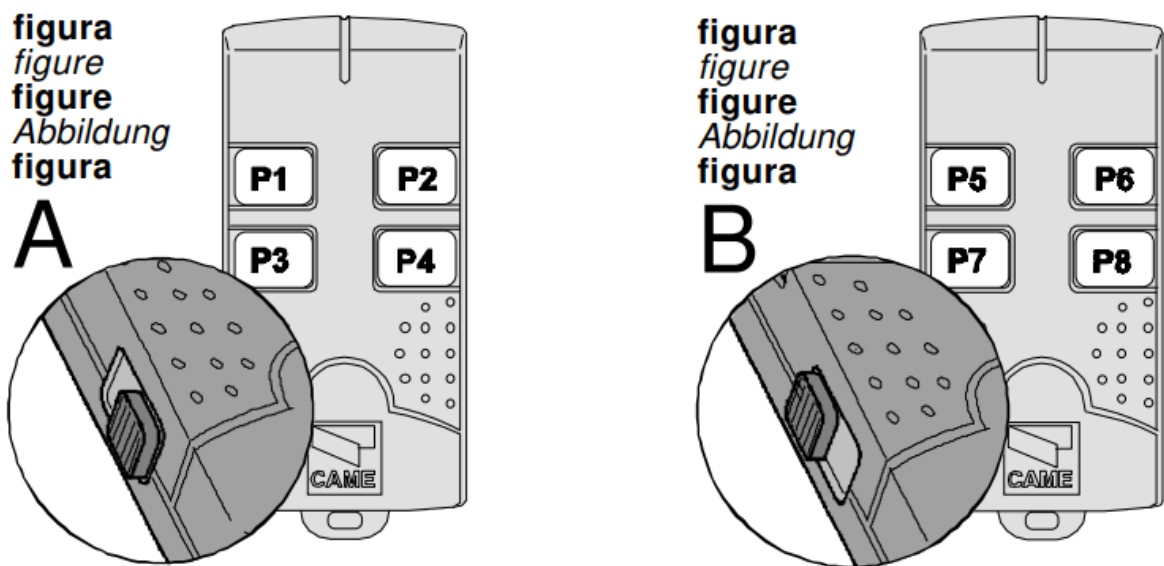


CHANNELS TABLE

CH 1 <div> <div> <div> <div> <div></div> <div></div> <div></div> <div></div> </div> <div>ON</div> </div> <div> <div> <div></div> <div></div> <div></div> <div></div> </div> <div>OFF</div> </div> </div> <div> <div>1</div> <div>2</div> <div>3</div> <div>4</div> </div> </div>	CH 2 <div> <div> <div> <div> <div></div> <div></div> <div></div> <div></div> </div> <div>ON</div> </div> <div> <div> <div></div> <div></div> <div></div> <div></div> </div> <div>OFF</div> </div> </div> <div> <div>1</div> <div>2</div> <div>3</div> <div>4</div> </div> </div>	CH 3 <div> <div> <div> <div> <div></div> <div></div> <div></div> <div></div> </div> <div>ON</div> </div> <div> <div> <div></div> <div></div> <div></div> <div></div> </div> <div>OFF</div> </div> </div> <div> <div>1</div> <div>2</div> <div>3</div> <div>4</div> </div> </div>	CH 4 <div> <div> <div> <div> <div></div> <div></div> <div></div> <div></div> </div> <div>ON</div> </div> <div> <div> <div></div> <div></div> <div></div> <div></div> </div> <div>OFF</div> </div> </div> <div> <div>1</div> <div>2</div> <div>3</div> <div>4</div> </div> </div>	CH 5 <div> <div> <div> <div> <div></div> <div></div> <div></div> <div></div> </div> <div>ON</div> </div> <div> <div> <div></div> <div></div> <div></div> <div></div> </div> <div>OFF</div> </div> </div> <div> <div>1</div> <div>2</div> <div>3</div> <div>4</div> </div> </div>	CH 6 <div> <div> <div> <div> <div></div> <div></div> <div></div> <div></div> </div> <div>ON</div> </div> <div> <div> <div></div> <div></div> <div></div> <div></div> </div> <div>OFF</div> </div> </div> <div> <div>1</div> <div>2</div> <div>3</div> <div>4</div> </div> </div>	CH 7 <div> <div> <div> <div> <div></div> <div></div> <div></div> <div></div> </div> <div>ON</div> </div> <div> <div> <div></div> <div></div> <div></div> <div></div> </div> <div>OFF</div> </div> </div> <div> <div>1</div> <div>2</div> <div>3</div> <div>4</div> </div> </div>	CH 8 <div> <div> <div> <div> <div></div> <div></div> <div></div> <div></div> </div> <div>ON</div> </div> <div> <div> <div></div> <div></div> <div></div> <div></div> </div> <div>OFF</div> </div> </div> <div> <div>1</div> <div>2</div> <div>3</div> <div>4</div> </div> </div>
CH 9 <div> <div> <div> <div> <div></div> <div></div> <div></div> <div></div> </div> <div>ON</div> </div> <div> <div> <div></div> <div></div> <div></div> <div></div> </div> <div>OFF</div> </div> </div> <div> <div>1</div> <div>2</div> <div>3</div> <div>4</div> </div> </div>	CH 10 <div> <div> <div> <div> <div></div> <div></div> <div></div> <div></div> </div> <div>ON</div> </div> <div> <div> <div></div> <div></div> <div></div> <div></div> </div> <div>OFF</div> </div> </div> <div> <div>1</div> <div>2</div> <div>3</div> <div>4</div> </div> </div>	CH 11 <div> <div> <div> <div> <div></div> <div></div> <div></div> <div></div> </div> <div>ON</div> </div> <div> <div> <div></div> <div></div> <div></div> <div></div> </div> <div>OFF</div> </div> </div> <div> <div>1</div> <div>2</div> <div>3</div> <div>4</div> </div> </div>	CH 12 <div> <div> <div> <div> <div></div> <div></div> <div></div> <div></div> </div> <div>ON</div> </div> <div> <div> <div></div> <div></div> <div></div> <div></div> </div> <div>OFF</div> </div> </div> <div> <div>1</div> <div>2</div> <div>3</div> <div>4</div> </div> </div>	CH 13 <div> <div> <div> <div> <div></div> <div></div> <div></div> <div></div> </div> <div>ON</div> </div> <div> <div> <div></div> <div></div> <div></div> <div></div> </div> <div>OFF</div> </div> </div> <div> <div>1</div> <div>2</div> <div>3</div> <div>4</div> </div> </div>	CH 14 <div> <div> <div> <div> <div></div> <div></div> <div></div> <div></div> </div> <div>ON</div> </div> <div> <div> <div></div> <div></div> <div></div> <div></div> </div> <div>OFF</div> </div> </div> <div> <div>1</div> <div>2</div> <div>3</div> <div>4</div> </div> </div>	CH 15 <div> <div> <div> <div> <div></div> <div></div> <div></div> <div></div> </div> <div>ON</div> </div> <div> <div> <div></div> <div></div> <div></div> <div></div> </div> <div>OFF</div> </div> </div> <div> <div>1</div> <div>2</div> <div>3</div> <div>4</div> </div> </div>	CH 16 <div> <div> <div> <div> <div></div> <div></div> <div></div> <div></div> </div> <div>ON</div> </div> <div> <div> <div></div> <div></div> <div></div> <div></div> </div> <div>OFF</div> </div> </div> <div> <div>1</div> <div>2</div> <div>3</div> <div>4</div> </div> </div>

FIRST SET OF KEYS

- **FIRST SET OF KEYS (P1/2/3/4)** – Carefully follow the procedure used for the 4-channel setting (ATTENTION! DO NOT USE CHANNELS 13,14,15, AND 16).
- Ensure that the selector switch on the left edge is positioned as shown in Figure A.
- **SECOND SET OF KEYS (P5/6/7/8)** – These keys are coded automatically (see example and table C); to activate these keys, move the selector to the position shown in figure B



EXAMPLE

If key P1 has been associated with the combination of code X and channel 2, key P5 will automatically be associated with the combination of code X and channel 16.

TABLE: C

PRIMA SERIE <i>FIRST SET</i> PREMIERE SERIE <i>ERSTE TASTENSERIE</i> PRIMERA SERIE			SECONDA SERIE <i>SECOND SET</i> SECONDE SERIE <i>ZWEITE TASTENSERIE</i> SEGUNDA SERIE		
tasto <i>key</i> touche <i>Taste</i> tecla	codice <i>code</i> code <i>Code</i> código	canale <i>channel</i> canal <i>Kanal</i> canal	tasto <i>key</i> touche <i>Taste</i> tecla	codice <i>code</i> code <i>Code</i> código	canale <i>channel</i> canal <i>Kanal</i> canal
P1	X	2	P5	X	16
P2	X	7	P6	X	15
P3	Y	1	P7	Y	14
P4	Z	12	P8	Z	13

TECHNICAL SPECIFICATIONS

- **POWER SUPPLY:**

- 12V d.c. battery

- **RANGE:**

- from 50 to 200 metres

- **SIGNALLING:**

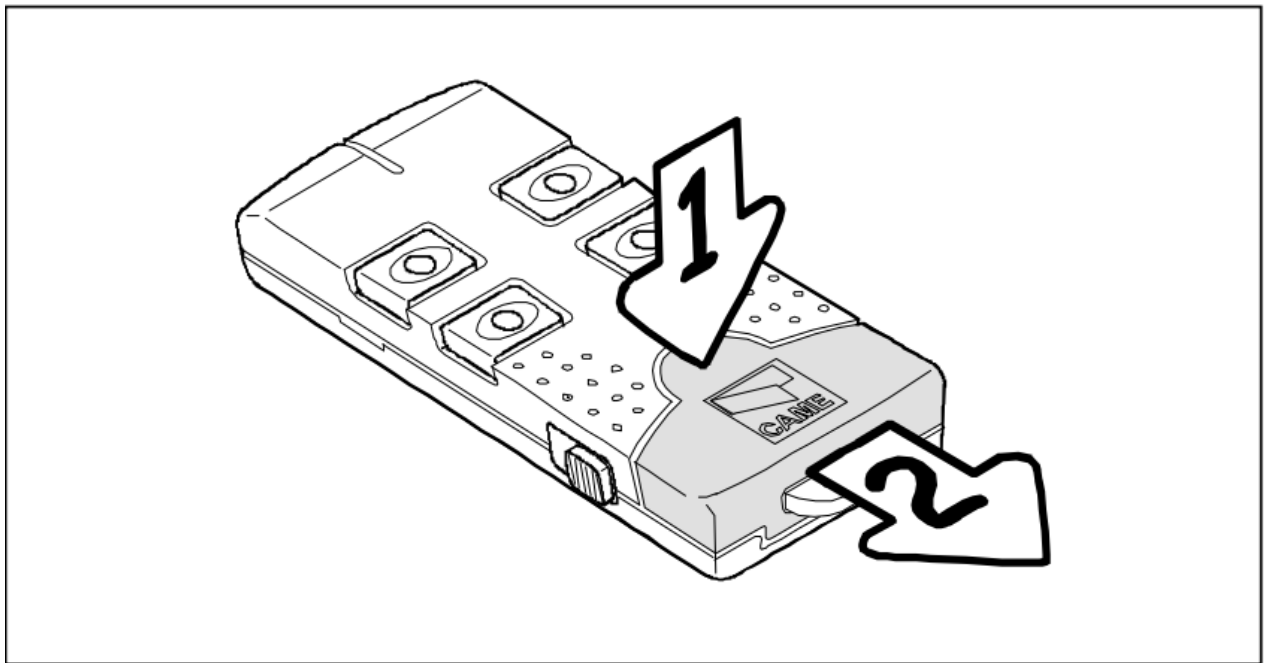
- audible signal of an actuated system

- **COMBINATIONS:**

- up to 16,777,216; each key can be assigned a personal, independent code and operating channel

- **CABINET:**

- **material:** ABS
- **dimensions:** 45x92x15 mm
- **weight:** 51 grams



FAQ

How do I know which channels to select from the table?

To select channels, refer to the CHANNELS TABLE provided in the manual and mark the settings on the diagrams accordingly.

Documents / Resources

	CAME TFM 2 and 4 Channel Transmitters [pdf] Instruction Manual TFM 2 and 4 Channel Transmitters, 2 and 4 Channel Transmitters, Transmitters
---	--

References

- [User Manual](#)

📎 2 and 4 Channel Transmitters, CAME, TFM 2 and 4 Channel Transmitters,

📁 CAME Transmitters

Leave a comment

Your email address will not be published. Required fields are marked *

Comment *

Name

Email

Website

☐ Save my name, email, and website in this browser for the next time I comment.

Post Comment

Search:

e.g. whirlpool wrf535swhz

Search

[Manuals+](#) | [Upload](#) | [Deep Search](#) | [Privacy Policy](#) | [@manuals.plus](#) | [YouTube](#)

This website is an independent publication and is neither affiliated with nor endorsed by any of the trademark owners. The "Bluetooth®" word mark and logos are registered trademarks owned by Bluetooth SIG, Inc. The "Wi-Fi®" word mark and logos are registered trademarks owned by the Wi-Fi Alliance. Any use of these marks on this website does not imply any affiliation with or endorsement.